

Vol 41 | No.6

FREE

CLOPHILL SPOTLIGHT

JULY 2019



**LOVE YOUR
LOCAL NEWS**

AMPTHILL PRINT CENTRE

DIGITAL PRINTING
DESIGN & MARKETING
DIRECT MAIL

and much more...

...and we're right on your doorstep at

Unit 24 Station Road Ind Est, Ampthill, MK45 2QY
(Just off the A507 Ampthill bypass, past the Post Office)

WE PRINT...

- Stationery
- Newsletters
- Menus & Tent cards
- Brochures
- Flyers & Leaflets
- Catalogues
- Books & Booklets
- Direct mail
- Training Manuals
- Banners & Posters
- Greeting cards
- Calendars
- Labels & Stickers
- NCR pads
- Folders
- Exhibition panels
- CD/DVD duplication
- Photocopying

3 DAY STANDARD SERVICE | SAME DAY AVAILABLE

www.fidelityprint.co.uk

Get a quote 01525 300001 quotes@fidelityprint.co.uk

fidelity[®]

Unit 24 Station Rd Ind Est, Ampthill



D. Andrews
P. Fleckney

MOTORS LTD

Tel: (01525) 860292

Tel: (01525) 404919

208 Clophill Road, Maulden, Bedfordshire MK45 2AF
89 Oliver Street, Ampthill, Bedfordshire MK45 2SA

**CAR AND COMMERCIAL VEHICLES
ALSO CLASSIC & AMERICAN CARS
SERVICING – REPAIRS – BREAKDOWN
SPRAYING – M.O.T.**



Stuart Benson Building Projects

Design, Build and Maintenance including Interior Refurbishments,
Kitchen / Bathroom fitting, Tiling, Flooring, Skirting boards, Doors
Garage conversions. Exterior Decking, Patios, Driveways
Garden Offices/ Sheds

Tel: 07946 579862 or 01525 403083

Email: benson.stuart@googlemail.com



A word from the Editor...

Hi everyone!

I hope you enjoy the variety of topics in July's Spotlight. We have our usual interesting articles from the schools, the churches, heritage trust, flower club and gardening page. Plus this month some news from the Dormouse project in Maulden, the Toddler Group and the Greensand Country Landscape partnership, and the annual report from the Village Hall. Clophill parish council are still looking for new members (see report on page 20). Unfortunately this means the Parish council report we usually share is not being produced. If anyone has any suggestions for an alternative please do get in touch with me.



***We take a break for the summer,
so see you all back in September!***

Kind regards,
Elaine



The magazine staff

EDITOR	Elaine Jones editorial@clophillspotlight.co.uk	07918 975823
ADVERTISING MANAGER	Emma Frost ads@clophillspotlight.co.uk	
DESIGN MANAGER	Chris Abrahams cmabraahams@yahoo.co.uk	
DISTRIBUTION MANAGER	Pete Liddle	860113
TREASURER	Richard Pearson	861110

Deadline for articles is 20th of the month

You can also read Spotlight online
www.clophillspotlight.co.uk

in support of

Sue Ryder

St John's
Hospice

Country Fayre & Festival 2019

1pm until late

Saturday 10th August
Adults £5 Children £1
St John's Hospice,
Moggerhanger.



- Live Bands
- Dog Show
- Family Entertainment
- Vintage Afternoon Tea
- Raffle and Auction
- Hot Food & Licensed Bar and lots more

For more information or to book a stall email:

Leigh.chapman@sueryder.org

Online tickets available

at: thecountryfayreandfestival.eventbrite.co.uk

 **Country Fayre & Festival in support of St John's Hospice**



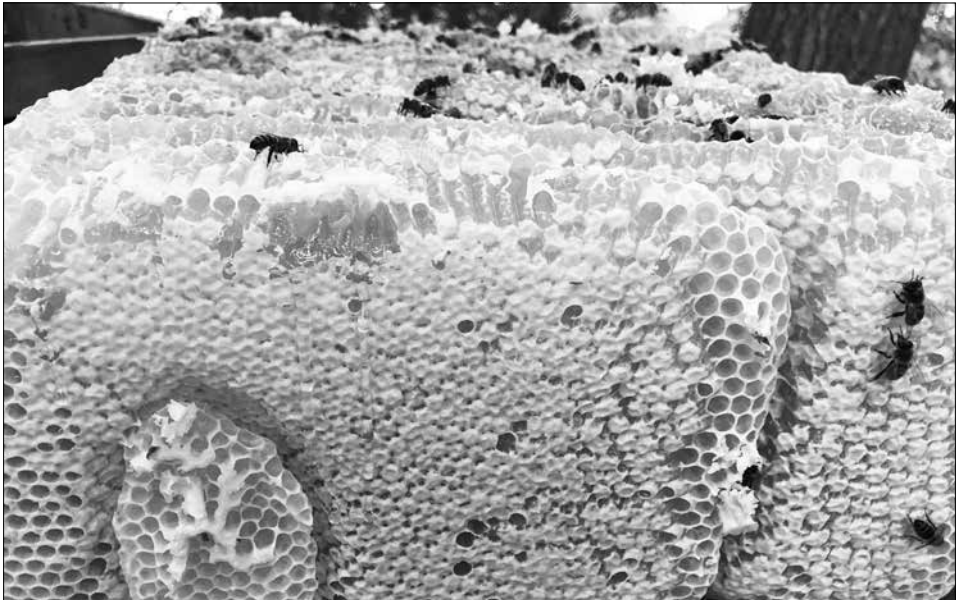
**palliative, neurological
and bereavement support**



Sue Ryder is a charity registered in England and Wales (1052076) and in Scotland (SC039576). Ref No. 04697 © Sue Ryder. December 2015
Created in RightMarket 25/4/2019 - 4:25:40 PM

News from Clophill Heritage Trust

As you will have read in the May addition – **we have bees!** Due to the lovely weather throughout May, we have been able to harvest our first batch of honey. For those of you who love honey or suffer with hay fever, you can't get honey that's much more local to Clophill than this. **We are selling raw unprocessed honey in jars and also in the comb**, so if you're interested do pop by or give us a call to get your honey, while stocks last. Please be aware that the batch is only small as we harvest a minimal amount so we don't impact the bee's food source.



As many of you know, at The Eco Lodges we try to have as little impact on the planet as possible – buying local produce, using sustainable energy sources where possible and producing as little waste as we can. We aim to continue to develop our practice to improve even more, but thought in the meantime we'd start a new venture: **a blog** to promote our ethos of eco living. Our intent is to start a conversation where people can discuss what they do and provide easy answers to improve our impact on the planet. Each month a new topic is discussed, with the goal to cover all aspects of daily life and provide ideas for easy changes and adjustments. Topics range from Travel, to Heating and Electricity consumption, and food sourcing and consumption; so there's something there for everyone.

Each blog contains easy to follow ideas and links to websites, so making changes can be as simple as possible. Our blogs are posted on our website www.clophillecolodges.co.uk/cht-news each month so please do have a read! We'd love to hear your ideas and what you'd like to see us post about.

For info call 07935 911207 or email info@clophillecolodges.co.uk
[www.Facebook.com/ClophillEcoLodges](https://www.facebook.com/ClophillEcoLodges)

Clophill Preschool

Your local **Ofsted Outstanding**
preschool invites you to....

Fun Friday!

We are holding an **open morning of outdoor play** for children up to 5yrs

Friday 30th August

10am-12pm £2 per child

Clophill Village Hall

Everyone welcome, just turn up on the day

Refreshments available

All money to go towards the development of
Clophill Preschool's Outstanding Outdoors!

Other dates for your diary...

Sun 17th Nov Clophill Preschool Christmas Market 2:30 - 5:00pm

Sat 21st Dec Family Christmas Craft Morning 10:00am - 12:00pm

Join us for our regular **Stay and Play** sessions at preschool
every Tuesday 9:30-10:30am free of charge, no need to book

EVERYONE WELCOME!

Clophill Preschool News

Hmm, it seems we may have been a little too optimistic about the weather in our last article, but for us and our children the torrential rain has not dampened our spirits. In fact for many of us it just makes the outdoor experience more fun! **We are very fortunate to have parents who understand that the pursuit of knowledge is not always a clean one.**

Our children have been digging in the newly designed **mud pit**, mixing muddy concoctions in the mud kitchen, climbing the new **giant log** and clambering over the new **log bench**. They have been jumping across the **wood stepping stones** in the woodland glade and swinging from the **rope swing**.

The children have also been working in the allotment, they **harvested some of the onions**, and used them to bake onion and rosemary bread. Our strawberries are taking a long time to ripen but we should be able to start harvesting more of the vegetables soon, **carrots next** we think.



As you can see from the photos our **outdoors is looking brilliant**. Thank you once again, to the Parish Council for allowing us to rent more space.

We worked hard to clear the unused area of nettles and brambles. **Gary** from A&G Logs, was a star helping us clear, taking away the debris and bringing us logs. We couldn't have done it without him and son **Michael**, from MM Tree Services, who created our log seat and helped **Barry** (Derek Harris & Sons) to move and expand the fence to envelop the new space. We also got staff involved showing what a **fantastic team** they are by working together to manoeuvre the snake logs to a new position.

We felt very privileged at this year's **Dads week**. This is an annual event in the run up to Father's Day when we invite all male role models from our families to join us at preschool. This year we had an unprecedented amount of men turn up, dads and grandads, and they were all happy to **help to build our new sand pit**. Gary donated the logs and our experienced dads and grandads constructed it, aligned it and then filled it with a ton of sand. The children love it!



Our Happy School Bags collection made a respectable **£184** this time. This money, along with a lot of passion and hard work, goes a long way to helping us transform our setting into the **haven for natural play and wildlife** it is today. We have a collection every term, so if you have anything to donate, please get in touch. Do join us for our Stay and Play mornings, 9:30-10:30 every Tuesday. **Wishing you all a great summer.**

- Contact Imogen on **07765 887868** or Chris on **07936 006381** or email clophillpreschool@gmail.com. Our website is www.clophillpreschool.co.uk



Clophill & District Flower Club

Fun with Flowers

During the first Thursday in June, members of Clophill and District Flower Club were very busy completing a number of interesting and beautiful arrangements in Silsoe Church. They were contributing their skills to a stunning Flower Festival called Blooms and Brides which was enjoyed by members of the public over the weekend. That evening the members relaxed watching Audrey Balderstone and Geoff Fox give a demonstration in Clophill Village Hall entitled 'Fun with Flowers'.

Audrey started with a design that could be used in a church flower festival. Pussy willow stems had been used to make an outline of a church window to which she added purple liatris and red roses. She told us about some of the church flower festivals she had been involved in and what fun they had been. The audience agreed that they had fun.

Geoff used a curved stand with pink dendrobium orchids while he told us how he became interested in flower arranging and his work as chairman of Watford Club.



NAFAS want us to use less floral foam, so Audrey used a structure of reeds in a vase to support the stems of the design. Blue delphiniums and white Avalanche roses completed the arrangement. Audrey told us about the fun associated with entering competitions such as Chelsea and Harrogate.

Next Geoff used a pink pot with a grid and loops of Phormium with Antirrhinums and pink roses. To complete the evening a container was used that had featured when Home Counties Area held the assembly at Hatfield with an Elizabethan theme. This was another occasion when there was a great deal of fun with flowers. The final rich coloured display brought a very pleasant evening to an end with happy raffle winners carefully carrying home their arrangements.

Do join us to learn more about this art – we meet on the first Thursday of each month (except August) at 7:30pm in Clophill Village Hall.



Brides and Blooms Flower Festival

A wonderful collection of wedding dresses and memorabilia, and a church filled with spectacular floral art displays, enchanted the hundreds of visitors at St James' Church, Silsoe. It was a community occasion with the flowers arranged by members of Clophill and District Flower Club.



There were 45 exhibits all on a wedding theme, from the Hen Party, a Country wedding, a wedding in the garden and an exotic Indian Wedding Breakfast. There were interpretive designs - 'If music be the food of love', Entwined, Two becomes One, and Hymns and Hers. These were more contemporary and created interest and a contrast to the other more traditional designs. Wedding anniversaries were also depicted with golden, ruby and silver designs.

One member specialises in intricate preserved flower and seed creations, everyone marvelled at her skill creating cakes, shoes, handbags and jewellery made using tiny petals, seeds, beads and lots of nail varnish to give subtle colours.

40 members of the Club took part, many who have learned their skills at our popular flower arranging classes. It was a very high standard and a super showcase of the expertise within the Club. We were delighted to be part of this Festival that **raised £4,200** for The Friends of Silsoe Church funds.



Carolyn Cranswick *Chairman of Clophill and District Flower Club*

CLOPHILL METHODIST CHURCH
COFFEE & CROISSANT
MORNINGS



ALL PROCEEDS IN AID OF CLOPHILL METHODIST CHURCH

10AM TO 12 NOON

£1:50

SATURDAY 13th July

SATURDAY 31st August

SATURDAY 5th October

ALL WELCOME

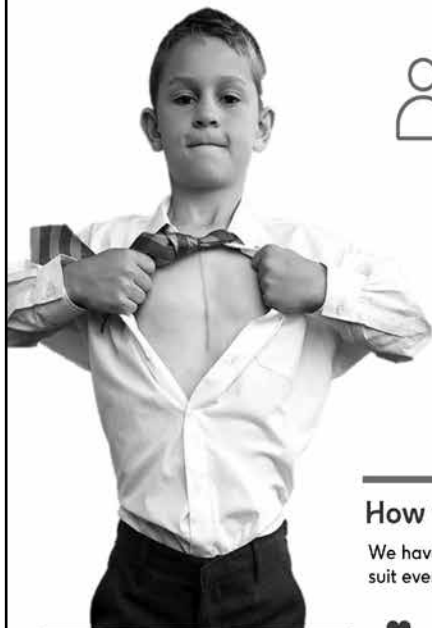




British Heart
Foundation

Join us to beat heartbreak in Bedfordshire

Our research starts with the heart but it doesn't stop there. Heart disease, stroke, vascular dementia and diabetes are all connected and are more likely to take the people we love than anything else. Our life-saving research only happens because of people just like you.



Around
61,000
people are living with heart
and circulatory diseases
in Bedfordshire



Heart and circulatory
diseases cause
100 deaths
each month
in Bedfordshire



Heart and
circulatory diseases
kill more than
1 in 4 people in
Bedfordshire



How you can get involved

We have many Community Volunteer Opportunities, something to suit everyone;

- ♥ Join a local Fundraising Group and organise events within your community.
- ♥ Manage our collection tins within your local area.
- ♥ Become a In Memoriam Secretary and support those remembering someone close to them.
- ♥ Provide talks to Clubs, Associations, Schools on the work of the BHF and how they can get involved.

TODAY

425

people will lose
their lives to CVD

...more than
100

people will be
younger
than **75**

7 MILLION

people fight their daily
battles with CVD

515

people will go to hospital
with a heart attack

190

people will die from
a heart attack

12

babies
will be born with
a heart defect

For more information on supporting the BHF contact
Sarah Cunningham,
BHF Fundraising Manager for Bedfordshire & Cambridgeshire
cunninghamsa@bhf.org.uk, 07741 640182



Come into the Garden

with *Kate Gardner*



Agapanthus

As we move into July I'm hoping that the weather will be a little kinder, by that I mean warmer and a little less wet than June was. However, the rain has benefited the gardens and it was great to see so many people visiting our wonderful Clophill Gardens during the Open Gardens weekend. Visiting gardens is a great way to gain ideas for your own patch and there is plenty of evidence that just being out in the garden is good for our health and wellbeing.

There's lots of jobs to think about over the summer, as Spotlight takes a break until September, so this time I've concentrated on things that we can do to keep our gardens full of colour through what I hope will be a warm summer.

Some of my favourite plants are at their best during July. Delphiniums, Agapanthus, lavender, various Clematis, Achillea, Nepeta, late flowering Peonies, Day Lily, Roses, Sweet peas and Honeysuckle are all blooming and the garden is full of beautiful scents. To keep summer plants and bedding at its best and to prolong flowering, it is essential to dead head. The purpose of dead heading is to encourage more flowers. If the flower heads are left on, then the plant switches to seed production and is then very reluctant to flower again. Dead heading, which is cutting off the spent flower head, forces the plant back into the cycle to produce flowers again. Cut the spent flower off just above a leaf node which is where your new flowers will break from.

For some plants, it can be easier to take the shears to the top growth and very often a second growth and flush of flowers will follow, as with *Alchemilla mollis* and hardy geraniums. This looks drastic but is a great way of rejuvenating these plants.

Early flowering perennials can begin to look a bit tired by July and their foliage is becoming tatty and brown. If these plants are cut back now, many will produce fresh green growth to liven up the border and sometimes even a second flush of flowers. Good candidates for this treatment are Oriental poppies, *Alchemilla*, hardy geraniums, & *Nepeta*. Cut back close to the ground, feed and wait a couple of weeks. It can look a bit bare when you first do this and if you don't like the sight of too much earth, cut back just before you go on holiday.

Now is also a good time to prune early summer-flowering shrubs such as philadelphus, flowering current and weigela after they've blossomed, so they can put on new growth this year that will hold the flowers next summer. As well as cutting back for shape, look for any damaged or dead shoots and cut them out. There's still time to plant summer bulbs for very late flowers. Try gladioli with deep colours including dark purple *Gladiolus* 'Espresso' or the beautiful *Gladiolus communis* subsp. *byzantinus* with its magenta flowers.

And this month is the perfect time to plant bulbs that will bring colour in autumn; for instance, Autumn crocus, amaryllis and nerine will flower in September and October. The nerines are particularly welcome as they have all the brightness of the early summer blooms with their blasts of pink and white and can make a real difference to the garden as winter draws in.

And finally keep mowing the lawn if it's not parched and, if it's looking tired, July is the last opportunity to apply a summer fertiliser. If it's dry you may need to water it into your lawn.

Happy Gardening



St Mary's School News

Time is flying as we work towards the end of term and long Summer break.

We recently welcomed into school parents of new children starting in Reception Class in September. I hope they enjoyed the opportunity to take another look around the school and the information given will be helpful for their children. We look forward to meeting the children again when they attend our transition day.

Year 4 have returned from their PGL trip to Caythorpe Court in Lincolnshire and have experienced a whole host of exciting opportunities, including raft building and high ropes. The children absolutely love it and we already have the date for next year booked!



We held our Annual Sports Day, with a fantastic atmosphere and another event the children hugely enjoy. Our football team also held their annual tournament, a very successful event, and a big thank you to everyone who helped.

FOSM have been busy making Father's day gifts and hosting a disco for our Nursery and Reception children. The children had a fantastic time and a big thank you to the members of FOSM who give up their time to organise it.

As always, during the last couple of days we will hold some special events for our Year 4 children leaving us for Middle School. They and their parents will attend the Leavers Service in the Church followed by the Caythorpe celebration, a great opportunity for their parents to see what they got up to whilst at Caythorpe Court through a 'humorous' certificate of achievement ceremony. There is an assembly led by Year 4 where they give a presentation of their memories whilst at St Mary's.

The children will need their Summer Break after all this and we look forward to seeing them back on 4th September.

In other news...

Our Year 4 children attended a Tennis Festival at Samuel Whitbread Academy and our Year 2 children attending a multisport event at Henlow Academy. They really enjoyed meeting children from other schools, as always they represented the school beautifully.

Our Years 1 and 2 children had the opportunity to enhance their Geography curriculum as they walked up to the old church, looking at the physical and human features of the village. They also visited St Marys Church with Rev. Jane, where they learnt more about the value of forgiveness.



The Tea-Time Concert was another success, we are very proud of how well our children played. A huge thank you to Mrs. Blackman and Ms. Belbin who organised such a wonderful event.

Our KS1 children enjoyed their trip to Woburn Safari Park and Nursery and Reception had a great time at Standalone Farm – all part of their respective Summer term topics!

St Mary's School News

Continued

Our value for July is *Faith*

As members of a Church of England school, Faith is central to our lives. We think about our own Faith and the Faith of people from other major religions and why Faith is important. We choose to look at Faith at this particular time as the children are moving on to new challenges. We are encouraging them to think about how Faith will help them to use the knowledge and wisdom they have developed through learning about values at St Mary's, in order to give them the strength they need at this time.

Acorn Nursery News

Some of our Acorn children visited Beverley Court, really enjoyed meeting and playing giant snakes and ladders, and looking at books about the 1950s with the residents. We received very positive feedback and are looking forward to visiting again next term.

We're having great fun following the children's current fascination with nature and constantly providing opportunities for them to experience the wonder of the natural world around them. We've enjoyed seeing our sunflowers and peas grow as well as evidence that our new bird feeder is being used. We're monitoring our Hedgehog Café for any signs of visitors! and growing lettuce and carrots which the children have enjoyed.

The whole class are doing a fantastic job of looking after our new rubber plant, taking it in turns to water it, clean the leaves and talk to it to keep it happy and growing!



Maulden Wood Dormouse Project

Did you know that Maulden Wood is home to a population of hazel dormice?

They were re-introduced to the wood in 2001 as part of a national Species Recovery

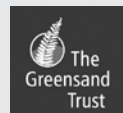


Programme which is trying to address the loss of this little animal from our woods and hedgerows. The re-introduction has been a success and in recent years dormice have started to spread out from the wood along hedgerows.

Being small and nocturnal, they are hardly ever seen, so the Greensand Trust is trying to raise awareness locally about the project, and dormice in general. Just in case anyone might be lucky enough to spot any signs

(such as one of their nests or the empty shells of hazelnuts they have eaten) that would show us how far they've spread out from the wood.

If you'd like to find out more, an information sheet can be downloaded from the Greensand Trust website at www.greensandtrust.org/dormouse-project



BARGOOSE

(Dr Simon P Hughes and Partners)

Patient Participation Group

Would like to invite you to

A HEALTH EVENING

Come and meet our own doctors,
practice staff, and a visiting
eminent speaker.

The speaker will focus on the issues
facing the wider family and carers
of dementia patients.

Our doctors will be answering a wide
range of questions put forward by
patients.

On

THURSDAY 26 SEPTEMBER

7.30 pm - 9.30 pm

at

SILSOE VILLAGE HALL

Everyone welcome

Refreshments will be provided

Clophill Toddler Group News



Clophill Toddler Group welcome all babies and toddlers from 0-3 years old on a Friday morning from 10am - 11.30am. New members are always welcome. We provide a safe and fun environment for the children to play and grow, plenty of fun toys for all ages with a specific area for smaller babies (including bouncers and play mats) so that all adults get a chance for a hot drink and a chat! We provide healthy snacks for the children during the session and also have some singing at the end to wind down.



This term we have had lots of fun so far. A soggy trip to the farm, where the children were able to pet the animals, ride the tractor and of course burn off energy in the play barn whilst we sheltered from the rain! We have explored Clophill Preschool's wonderful outdoor area during their messy play session with us, and enjoyed some great hands on crafts such as home made textured play dough and sock puppets!



We celebrated Summer Solstice with some sunshine crafts, another fun messy play session and also our fab end of term party!

We meet up too over the Summer Holidays (older children welcome!) at various fun places in the local area. A timetable will be going up on our Facebook page over the next few weeks.

If you're considering coming along for the first time then please don't feel nervous! The first session you attend is free and we are a very welcoming and friendly group.

Feel free to follow us on Facebook to see what we're up to or send us a message.

- www.facebook.com/Clophilltoddlergroup
- chaz_messer@hotmail.com – Clophill Toddler Group Chairperson

Shefford Craft & Produce Show

2pm, Saturday 31 August
Methodist Church Schoolrooms

Come and have a look at craft exhibits and produce – there'll be photography, flowers and floral art, children's and adults' handicrafts, cookery and garden produce.

Refreshments available

For more information email sheffordcps@gmail.com





News from Greensand Country Landscape Partnership

This May, more than 200 events and activities took place across the landscape, from Leighton Buzzard to Gamlingay, as part of the second annual Greensand Country Festival.

The festival, which is a celebration of the 40 miles of scenic landscape, defined by the Greensand Ridge and its surrounding areas, saw partners, local businesses, special interest groups, clubs and visitor attractions come together to offer an exciting programme of activities.



Organised by the Greensand Country Landscape Partnership, whose five-year National Lottery Heritage funded project aims to encourage local residents and visitors to get out and explore the beautiful countryside on their doorstep, was once again a huge success.

With forest schools, cookery classes, horse trekking, nature walks, guided cycle rides, traditional country crafts and outdoor performances included in the events line-up, there was something for every age and interest.

Sarah Cowling from the Wildlife Trust BCN, explained: "We have really enjoyed getting children, young people and their families out in our Greensand Country reserves, and had fun exploring the fantastic wildlife that lives on the Greensand. Our youth rangers carried out some important conservation work during the festival to help keep the reserve a wonderful place for the nature that lives here and for visitors."

If you have an idea for an event or would like to run an activity at the Greensand Country Festival 2020, please contact lindsay@greensandcountry.com



About Greensand Country Landscape Partnership

Greensand Country is an island of distinctive, beautiful and loved countryside, based on a band of higher ground stretching from Leighton Buzzard, through Clophill, to Gamlingay. It contains all of Bedfordshire's remaining heathland, more than half of its woodland, and more surviving historic parkland than any other landscape in the country, all crossed by networks of cycle tracks and footpaths just waiting to be discovered.

The vision is that by 2020 Greensand Country will become a living and working landscape that is cherished by present and future generations, and we will have reversed the gradual decline in the area's landscape character.

For further information about Greensand Country Landscape Partnership visit



www.greensandcountry.com, for regular updates follow [@greensandsocial](https://www.facebook.com/greensandsocial) on Facebook, Twitter and Instagram. Alternatively call Anne Walsh, Communications & Marketing Officer 01234 838774 or email anne@greensandcountry.com

St Mary's Church News



Clophill Open Gardens Weekend

Clophill was looking great for the Open Gardens Weekend. Visitors came from far and wide – from Barnet, Cambridge and even Harrogate, as well as from surrounding towns and villages. They all enjoyed wandering around the 15 gardens that were open, appreciating the designs and differences, the plants and the features. There were so many compliments about our lovely village, the friendliness of everyone and the beautiful gardens throughout Clophill.

The children took part in the Treasure Hunt to find an animal in each garden with a letter attached that together made the words **'butterflies and bees'**, those who completed it received a pot of honey and a painted butterfly.

Most of the visitors went to the Church for the lunches and teas and enjoyed a wide variety of delicious homemade cakes. The ladies in the Church were kept very busy, although it was a pleasure serving such friendly and complimentary people.

It was a wonderful community event enjoyed by all and made possible by the generosity of so many residents. Thank you to all the garden owners for allowing their gardens to be open, and the people who sat on the gates of each garden to welcome everyone. Thank you to the programme sellers who greeted the visitors at The Green and the Church, and the School for providing the car park. Thank you to the ladies who made the cakes and served endless cups of tea and cake. Thank you particularly, to Jenny and John Wright who organised the event in a very professional way.

The fantastic **amount raised is £4,521** that will help to maintain the Church and keep it a special building in the village. Thank you to everyone who supported this event.

Carolyn Cranswick Co-ordinator of the Fundraising Team at St Mary's

CLOPHILL METHODIST CHURCH
& ST MARY'S CHURCH

INVITE YOU TO OUR COFFEE MORNING



IN AID OF MACMILLAN CANCER SUPPORT



PLEASE COME AND JOIN US ON
SATURDAY 28th SEPTEMBER
CLOPHILL METHODIST CHURCH
10:00 AM TO 12 NOON



Bedfordshire
Cambridgeshire
Northamptonshire

Wildlife walks & talks



Bat Walk at Flitwick Moor

Wednesday 10th July: 8.30pm

Bat detectors will be employed to identify different species of bat via their specific echolocation frequencies, as they catch insects around the woods and moorland. This walk will be led by Colin Carpenter, the moor's warden.

Places are limited, so please book. £2 per adult

Badger Watching at the Tewin Hide

Sunday 21st July at dusk

A fabulous opportunity to see many badgers coming to feed outside this purpose built hide in a Hertfordshire orchard (last year our group saw over 15!).

Other species such as foxes and deer might be seen too.

Places are limited to 12, so please book. £10 per adult/£5 per child



Butterfly Walk on the Sharpenhoe Clappers

Saturday 27th July: 10.00am to 12.30pm

Hoping for warm, dry weather to see a variety of butterfly and moth species. The Sharpenhoe Clappers are part of the Chiltern Area of Outstanding Natural Beauty and afford great views across Central Bedfordshire. This walk will be led by BNHS naturalist Dr Wilf Powells and will take us through the ancient beech woodland of this chalk escarpment. **Places are limited, so please book. £2 per adult**

For bookings or additional information please email flitvale.info@gmail.com or ring Ann on 075801 78889 between 6pm and 8pm or at weekends. www.flitvale.org.uk

Clophill Village Hall

Annual Report June 2019



Summary of 2018-2019

The year ending May 2019 has been another good year for the Village Hall.

The Committee report good results for our financial performance; however we have faced some quite severe cost increases, especially in fuel and cleaning expenses. The latter was a conscious investment in order to professionalise our cleaning operation for the benefit of our users. We have conducted a thorough review of our costs and hire rates, and devised a new more transparent pricing policy, communicated to all our regular users: this should strengthen our financial performance. Alongside this work, we have reviewed our occupancy levels and recognised gaps in our hiring periods, which we will now promote to increase use of the hall, and therefore our income. You will have seen an example of this promotional activity in the June edition of Spotlight.



Following a number of incidents of vandalism in the Pre-School outdoor classroom we have installed a completely new 'state-of-the-art' CCTV system. If there are other incidents, we have a much stronger chance of identifying and prosecuting the perpetrators.

We conducted our customary fundraiser just before Christmas 2018, the Santa Sleigh which was really well received by the families in the village. In April 2019 we put on a Rock 'n Roll night which attracted record numbers to the hall, it was a great night which we will look to repeat following the feedback from attendees.

The job of running the Village Hall falls most often on the shoulders of our small committee. A very special thank you goes to all members of the Village Hall Management Committee for their hard work and personal time devoted to the upkeep and running of the hall. Our Committee is quite small in size (only eight members) so the burden of running the hall falls on just a few very willing shoulders. We would really welcome new members to spread the load and maybe bring some new ideas. If you are interested just call me on **07831 255807**.

Key Issues for 2019-2020

- Continue to manage our costs and revenues
- Optimise occupancy of the hall
- Maintain the quality of the fabric of the hall at least cost but presenting the highest possible standards for users
- Expand the Village Hall Management Committee membership.

Diary Date

We are running again one of our popular **RACE NIGHTS** on **12th OCTOBER**. Bring your own drinks, a fun night, just call me on **07831 255807** for tickets.

Steve Langhorn, Chair, Clophill Village Hall Management Committee

What's on in and around Clophill

JUL



Saturday 13th

Coffee and Croissant morning Clophill Methodist Church, 10am to 12noon



Friday 30th

Clophill Pre-school Fun Friday Clophill Village Hall, 10am to 12noon

See poster in this issue

AUG



Saturday 31st

Shefford Craft and Produce Show Methodist Church schoolrooms, 2pm

See poster in this issue



Saturday 31st

Coffee and Croissant morning Clophill Methodist Church, 10am to 12noon

SEP



Sunday 8th

Harvest Festival service Clophill Methodist Church, 10:30am



Saturday 28th

MacMillan Cancer Support coffee morning Clophill Methodist Church, 10am to 12noon *See poster in this issue*

On throughout the month...

Wednesdays...

- **Tea and Chat** 10.30 to noon, Methodist Church

Thursdays...

- **Thursday Leisure Club** 2pm, St Mary's Church

Fridays...

- **Clophill Toddler Group** 10am-11.30am, Village Hall, See 'Village Groups' for contact details

One Saturday a month...

- **Messy Church** 4pm-6pm, Clophill Methodist Church. Dates: Jul 20; Sep 14; Nov 16; Dec 14. See 'Village Groups' for contact details.

CHURCH SERVICES

Regular services at St Mary's Church, Clophill

1st Sunday	8am, Holy Communion;
	10.45am, Family Praise
2nd & 4th Sundays	10.45am, Parish Communion
3rd Sunday	10.45am, Morning Prayer/Praise
5th Sunday	10am, Benefice Services

Regular services at Clophill Methodist Church

1st, 2nd, 4th, 5th Sundays	10.30am Morning Service
3rd Sunday	10.30am All Age Worship Service

If you have any diary dates that you would like included on this page, please email clophillspotlight1@hotmail.co.uk

Clophill Community Care

Our new Social Group is now called the **Thursday Leisure Club** or **TLC**.

We meet in St. Mary's Church on Thursday afternoons from 2 o'clock until about 4. So far people have enjoyed playing Bridge, Scrabble, Rummikub, Chess, Ludo and mini Carpet Bowls; have made a difficult Jigsaw puzzle and, of course consumed tea and posh biscuits. We plan to have monthly "specials" such as talks, craft sessions and perhaps outings if that is what people want. With enough people we could start groups for walks, book reading or sewing/knitting bees.

If any of these activities interest you, or you would just like to come for the company, why not come along and give it a try one Thursday? **Come for some TLC.**

Parish Registers for July and August

1819

Baptisms

Aug 1 John son of Samuel and Mary Burrows, father a carpenter
 Aug 29 Thomas son of Thomas and Sarah Everitt

Marriages

Jul 1 George Phipps of Campton to Mary Titmass
 Jul 26 Stephen Bedford to Sophia Savage
 Aug 30 John Izzard to Sarah Maudlin (?)

Burials

Jul 19 Thomas Wittimore

1869

Baptisms

Jul 4 Catherine Lincoln
 Anne Elizabeth Morchard (?)
 Aug 1 Wm Bass, Mother "a single woman"
 Sidney John Bridges of Maulden
 Edwin Payne, father a bricklayer

Burials

Aug 15 Elizabeth Jane Garner 16
 Emma Doggett infant

1869 (continued)

Burials

Aug 29 Elizabeth Carter 44

1919

Baptisms

Jul 6 Daisy Christine Bean, father a sailor
 Aug 10 Colin Billington
 Thomas Cecil Izzard

No marriages or burials recorded

1969 (back in St Mary's Church)

Baptisms

Jul 6 Stephen Charles Gibbs
 Aug 24 Mark Anthony Vincent
 Alun Roy Farrar

Marriages

Jul 26 David Norman Pye 25
 of Newbury to
 Hazel Elizabeth Morgan 21

Burials

Jul 10 Frank Gobey 79

CLOPHILL METHODIST CHURCH



BEETLE DRIVE

Saturday 12th October, 6.30pm

Adults £5, children £2.50

Refreshments

In aid of Clophill Methodist Church

Tel: 01525 860695



The Council is still looking for more members that will help take us forward over the coming years. We meet 10 times a year and discuss local issues including planning, recreation and all things relating to Clophill. This is a voluntary role and we offer training in aspects of being a Councillor. We have a broad range of people in the Council, many of them in full time employment. If you are interested, please contact the Clerk (details below).

The Parish Council website has more detail – www.clophill-pc.gov.uk
Agendas and minutes from meetings are here – www.clophill-pc.gov.uk/files

There is also a mailing list and alerts on items published on the website.
www.clophill-pc.gov.uk/register/?return_url=%2fgroup%2djoin

The public are always welcome to attend any meetings. We will be discussing planning applications, local community issues and local concerns (normally in that order). There is a section on the agenda for members of the public to address the Parish Council with their concerns (normally at the start of the meeting). The Parish Council does have items it needs to make decisions on and asks anyone attending to respect this.

If you would like more information please contact James Stirling, Clerk and RFO to the Parish Council on clerk@clophill-pc.gov.uk or call 01462 887226.

Planning

CB/19/01283/FULL

Location: 3A The Causeway

Proposal: Single storey side/rear extension following the removal of the existing conservatory. Some concerns have been raised by the council. If these are dealt with, we would happy to recommend to: **SUPPORT**

CB/19/01506/FULL

Location: 9 Cainhoe Road

Proposal: Proposed single story front extension. **SUPPORT**

CB/19/01473/FULL

Location: 11 Cainhoe Road

Proposal: Partial Ground Floor Side Extension and First Floor Side Extension. **SUPPORT**

CB/19/01509/LB

Location: 97 High Street (Listed building)

Proposal: Re modelling of the ground floor kitchen area, alterations to First floor en-suite and bathroom. **SUPPORT**

The next Parish Council meeting will take place at the Village Hall
at 7.45pm on Tuesday 30 July

Useful numbers

Gas (Emergency)			0800 111999
Electricity (Emergency)			0800 7838838
Emergency Fire/Police/Ambulance			999
Water/Sewage (Anglian Water)			0845 7145145
Telephone	(Customer Services) 150	(Faults)	151
Highways Department (Central Bedfordshire Council)			0300 3008049
Benefits Agency (Bedford office)			01234 361500
Registrar's Office (Births/deaths/marriages)			0300 3008089
Rail (Enquiries)			0845 7484950
Buses 01234 262151	(Link A Ride) 01525 840511	(Flittabus)	01582 406561
Luton Airport			01582 405100
Swimming	(Flitwick) 01525 717744	(Robinson Pool)	01234 212479

LOCAL GOVERNMENT

Central Beds Offices (Chicksands)			0300 300 8000
Mid-Beds MP		Nadine Dorries	01462 811992
Central Bedfordshire Councillors		Michael Blair	01525 404513
		Paul Duckett	07988 184061
Clophill Parish Council	(Clerk)	James Stirling	01462 887226

HOSPITALS

Bedford (North & South)	01234 355122	Admissions	01234 261150
		Appointments	01234 359012
Luton & Dunstable			0845 1270127

DOCTOR'S CLINICS

Ampthill	(Houghton Close) 01525 300898	(Oliver Street)	01525 631395
		(Greensands)	01525 631390
Shefford	Enquiries 01462 818620	Appointments	01462 810034
Barton 01582 528700		Flitwick	01525 715300

POLICE

County Police HQ		Non Emergency	101
Ampthill Station			01234 841212
			101

CHURCHES

St Mary's Parish Church		Revd Dean Henley	01234 381235
	(Church Warden) Rosemary Ilett	mandrilett@ontel.com	01525 860274
St Francis RC Church, Shefford		Ian Gordon	01525 860875
Clophill Methodist Church		Jim Davies	01525 860829
Baptist Churches (Ampthill) Doreen Gibbs	01525 862424	(Maulden) Ian Crawford	01525 634325
		(Shefford) Hazel Arnold	01462 812564

SCHOOLS

Clophill St Mary's C of E Lower School & Nursery (Headteacher Mrs K Bingley)			01525 860206
Harlington Upper School , Harlington			01525 755100
Preschool clophillpreschool@gmail.com	(Chris) 07936 006381	or (Imogen)	07765 887868
Redborne Upper School , Ampthill			01525 404462
Robert Bloomfield Middle School , Shefford			01462 628800

Village groups

Beverley Court		860920
Brownies	https://enquiryym.girlguiding.org.uk	
Clophill Community Care	Duty Contact	07791 773705
Clophill Heritage Trust	Ali Bradbury	07894 710001
Clophill St Mary's C of E Lower School & Nursery	Emma Topliff	860206
Clophill Toddler Group	Hannah Compton	07535 705711
Clophill United Charities	Christine Fellini	861912
Conservation Group	Brian Adams	862297
Flower Club	Gillian Hill	860539
Friends of the Cheshire Home	Sue Pearson	861110
Funzone After School Club		07903 167493
Greensands Community Choir	Luke Howard	07975 520085
Indoor Carpet Bowls	Tony Meredith	860754
Messy Church	Victoria Higgins	07920 568861
	victoriajhiggins@hotmail.co.uk	
St Mary's PTA	Julia Skelton	07774 993973
Scouts and Cubs		www.scouts.org.uk/get-involved
Tea and Chat	Anita Errick	860695
Village Hall Booking Secretary	Marilyn Browning	07821 643936

DAVID JAMES

WWW.DAVIDJAMESKITCHENS.CO.UK



SAVE £££
BUY DIRECT

Call 01525 722230

NEW

KITCHEN & LIGHTING
SHOWROOM

5 MINUTES
FROM CLOPHILL

DESIGN
MANUFACTURE
INSTALL

Pulloxhill
Business Park
Greenfield Rd
Bedford
MK45 5EU

Glee
Greensand Community Choir
LOVE SINGING!
sing with an exciting local choir...



Come along to your local **community choir**,
for men and women of all singing abilities!
Mondays, 8.00-9.30 pm at St. Mary's Church, Clophill.

- Come and sing with an exciting new local choir led by a professional musical director
- Uplifting music in a variety of styles: musicals, classic pop, folksongs, sacred and world music
- Welcoming singers of all abilities - no audition, no need to read music!
- New members - come along any time for a free taster



Enquiries to:

greensandcommunitychoir@gmail.com

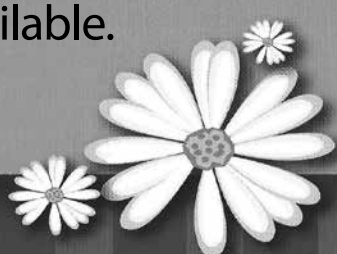
or ring Luke on: 07975 520085

Daisy Cooper

Spring cleans, one off cleans and
moving home cleans all available.

Daisycooper22@hotmail.co.uk

Please call 07913 332914



Keeping your home as fresh as a Daisy

Hypnotherapy...*the Mindful Way*

For help with: anxiety, stress, IBS, migraine mindful eating,
insomnia & many other conditions. For more information or
an initial consultation please contact Ann. Tel: 07791171980

Email: enquiries@pathwaysofmindfulness.co.uk
www.pathwaysofmindfulness.com



Painter and Decorator
Call Chris : 07950714579



*do you want your
home brightening up?*

all interior & exterior work

no job too small!

free no obligation quote

*25 years experience
& fully insured*

facebook: @christopherthepainter
email: chris.minihane@btinternet.com

JK Garden and Landscape Services Ltd



We offer...

*full landscaping service
patios
fencing
decking
new lawns
driveways
all garden maintenance*

Contact us on **0791 2028254**
or at **jkgardening@hotmail.co.uk**

You can also find us on Facebook

TALKEASY *Coaching*

***Do you want to make a fundamental
difference to your life and don't
know where to start?***

My name is Lynn and I am a Life Coach.

I have extensive experience helping
with every aspect of life, e.g. support with
family issues, or your own financial,
emotional, or physical wellbeing.

My most recent project has been supporting
young teenagers in their place of education.

Be the change in your life
and contact me for a free,
no obligation chat.



07557948644

01525860384

lynncléments87@gmail.com



Tammys' Talons

Nail Technician
Gel. Manicure and Pedicure

IZABELHAMMON
REGISTERED NAIL TECHNICIAN
CALGEL IZ Champion

Tammy Kirby

Clophill, Bedfordshire, MK45 4AW

Tel : 07968379309

tammystalons@gmail.com

Linda Allsop

PHYSIOTHERAPY



Chartered
Physiotherapist
with over 30 years
experience in both
the Private Sector
and the NHS.

01462 711978 | 07989 257026
www.linda-allsop-physio.co.uk

USING PARABEN & SULPHATE FREE, 100% VEGAN,
CRUELTY FREE PRODUCTS



A Cut Above Hairdressing

by Rachel

In the comfort of your own home
cutting & styling specialist

call or text : 07896009382
facebook: acutaboverachel

Salon experienced
Fully insured
Fully qualified to Level 3 Standard.

PERSONAL DOG WALKER

£10 per hour
£7 per half hour
£6 per visit

- First Aid Certified
- Insured



Text or call Corrane on

07576 473373 or 01525 630740

 Corrane's personal dog walking



Professional friendly accountancy services

Fully qualified,
Free initial consultation,
competitive fees
Sole traders, Ltd companies,
bookkeeping, payroll,
CIS, VAT & Tax.

sally@sjtax.co.uk
01234 831997
07899 808592

ROUTE 66 Barbers

- Easy parking
- Minimum wait
- Complementary refreshments

CHILDREN'S CUTS!

OPENING TIMES:

Monday	closed
Tuesday, Wednesday	9.30-4pm
Thursday Winter	9.30-7pm
Thursday Summer	8pm
Friday	9.30-6pm
Saturday	8.30-4pm
Sunday	Closed

07813 145112
22 High Street, Silsoe, Bedfordshire MK45 4 EP

Telephone **01525 860526**

The Stone Jug

A Free House
BACK STREET, CLOPHILL

Despite many protestations from 'the Matriarch', Joyce is still very much at the helm (or so we tell her!). Vikki has been demoted (but she's still here, don't you know!) and Mark has moved into pole position and is doing exceptionally well. We're still very much a family-run village pub with our late dad's saying still ringing true – 'We're a proper pub for proper people'. Cheers!

- 5 real ales, including 2 guest pumps that change frequently (see our Facebook page for details)
- selection of wines and Prosecco by the glass – or even better, by the bottle
- home-cooked lunches Tues-Sat, 12pm-2pm

REMEMBER OUR MOTTO
"A VISIT TO THE JUG IS BETTER THAN GOING TO A PUB"
CHEERS JOYCE, VIKKI & MARK

www.stonejug.co.uk www.facebook.com/thestonejugclophill

MOTHERING THE MOTHER THROUGH

pregnancy, childbirth & beyond

I offer bespoke practical and emotional support to mothers and families perinatally. Find out how I can protect your birth space and support your journey on your terms.

CONTACT YOUR LOCAL DOULA ROSIE: 07543 280171 WWW.ROSIECARTERSUSO.COM

DOULA root

OVENCLEAN.

The original oven cleaning specialists

All types cleaned:



- Ovens
- Grills
- Ranges
- Hobs
- AGAs
- Microwaves
- BBQs
- Extractors

Fully insured, and DBS Police Checked

For a quote call Clive direct on:
07949 233089 or phone the
Office on 0800 840 7127



www.ovenclean.com



Ovenclean Clive Burgess

Warm Property Services



Heating



Plumbing



Bathrooms



Maulden based. British Gas trained engineer with more than 10 years' experience. Discount for over 60's.

Free no obligation quote & advice.



Boiler and heating installations



Bathroom suites



Power flushing



Plumbing and drainage



Landlord Safety certificates



Fires and cookers

07716 478794 **01525 839342**
www.warmprops.co.uk

THE BLUECAT



LUXURY CATTERY

Tel: 01525 861416
www.thebluecat.net

Find us on Facebook @thebluecatcattery
 or email us at enquiries@thebluecat.net

The Bluecat is a luxury cattery set in the quiet area of Jacques Lane in Clophill. With just 14 cat chalets, we have time to fuss, pamper and play with your cat to its heart's content whilst in our care.
 Please call for further information.

Misty Double Glazing?

Over 30 Years experience. FREE Quotes

Over 30 Years experience. FREE Quotes

**KEEP YOUR WINDOW FRAMES...
 ... WE JUST REPLACE THE GLASS!**

- UPVC • Aluminium • Or Wood

Because we replace just the glass the repair is a Fraction of the cost of a complete replacement window.

BEFORE



AFTER



mistydoubleglazing.co.uk
QUALITY GLAZING SERVICES

01525 876808

WE ALSO REPLACE BROKEN...

- Glass • Handles • Hinges & Locks
- AND REPAIR...Patio Doors & Conservatories!**

Nicola Rayner Fitness

Feel great in 2019!

BOXWORX

Fun, effective pad work based boxing class for a great stress relieving total body workout!

Wednesday 8-9pm

Clophill village hall

Limited spaces available booking essential

Pilates & Men's Core Strength

Improved core strength and posture through low impact stretching and spine safe conditioning exercises. Delivered with a positive, caring approach in a fun and friendly environment to leave you feeling energized!

Classes in Flitton & Silsoe

Limited spaces available booking essential

Classes also in the surrounding area

Legs, Bums & tums

Zumba

Ladies Boot Camp

For full timetable or to book contact Nicola
fitone@live.co.uk 07801 510988

E.T. Accountancy Services

Experienced Chartered Accountant and Chartered Tax adviser based in Clophill providing a full range of accountancy and taxation services to businesses and private individuals.

To arrange a free initial consultation please telephone me on 01525 590465 or email emma@et-accountancy.co.uk

Chartered Accountant and Chartered Tax Adviser

Emma Thoulass FCA CTA
www.et-accountancy.co.uk
01525 590465

Take out an annual ad in Spotlight

Black & White per year

One-sixth	£53	H31 x W126mm
One-quarter	£69	H92 x W61mm
One-third	£80	H61 x W126mm
Half page	£112	H92 x W126mm

Please email our Advertising Manager at ads@clohillspotlight.co.uk



be hot!

with
Slimming World

TUESDAY

Silsoe

Silsoe Community Sports Centre
Chestnut Avenue, MK45 4GP
5:30pm & 7:30pm

Tel / Text: Liz for details
07973 532793

slimmingworld.co.uk
0344 897 8000   



Welcome to Clophill St Mary's C of E Lower School and Nursery

A small, friendly, Voluntary Aided Church of England Lower School, graded 'Outstanding' by Ofsted, with close links to the local community.

St. Mary's is a Values based school taking children aged from 2 years 7 months to 9 years and providing them with a framework for living, tightly woven into the positive Christian ethos of the school.

Breakfast and after school care for all ages.

Acorn Nursery

for preschool children aged 2 years 7 months to 4 years with breakfast and after school care available.

Providing 30 hours free childcare entitlement.



**NEW NURSERY BUILDING
OPEN NOW!**

To arrange a visit, please call us 01525 860206
or email: generaladmin@nursery@clophillstmarysschool.co.uk
For more information visit: www.clophillstmarysschool.co.uk



BUY ONE GET ONE FREE*

**GRAND CANARY ISLANDS,
MADEIRA & MOROCCO**

1 November 2020 • 19 nights
onboard Columbus

London Tilbury, Rotterdam, Leixões for Oporto, Lisbon,
Funchal, Las Palmas, Santa Cruz, Arrecife, Agadir,
Casablanca for Marrakech, Gibraltar, Cádiz for Seville,
Vigo for Santiago de Compostela, London Tilbury

PRICES FROM

1st Guest from **£1,999** 2nd Guest **FREE**

**GERMAN MARKETS &
FESTIVE SHOPPING**

6 December 2020 • 5 nights
onboard Magellan

London Tilbury, Amsterdam,
Hamburg, Antwerp, London Tilbury

PRICES FROM

1st Guest from **£729** 2nd Guest **FREE**

Many more cruises available!

*Prices shown are per person based on two adults sharing a Voyager inside cabin and cabin will be allocated at ticketing stage. Prices include all cruise offer discounts and savings. Cruise & Maritime Voyages are offered for sale in the UK by South Quay Travel & Leisure Ltd trading as Cruise & Maritime Voyages. ABTA V9945. Gratuities at £7 per person per night debited to your on board account. Prices correct at time of going to print. Buy one get one free offer ends 31 August 2019. Full terms and conditions apply.

01234 326778

24 Mill Street, Bedford MK40 3HD

sales@cruiseselect.co.uk

www.selecttravelholidays.co.uk

www.cruiseselect.co.uk



BOOK WITH CONFIDENCE
ABTA & ATOL protected



**ARCHITECTURAL DRAWINGS AND
BUILDING DESIGN SERVICES**

Professional Architectural design services provided for all types of private residential building projects including extensions, loft/garage conversions, garages and outbuildings through to new build dwellings with all necessary council approvals obtained.

For free estimates and advice contact Steve Coates on Flitwick 01525 862457 or 07960 215053.
stevecoates72@gmail.com

S & S Coates Surveying & Design, Unit 4 The Courtyard,
r/o 13 High St, Clophill, MK45 4AB.



A L & G ABBOTT

Funeral Directors

~ Established 1832 ~

WITH YOU WHEN IT MATTERS MOST

An independent family business continuing to provide a caring & professional service to Bedford, Kempston & the surrounding villages.



- 24 Hour Personal Service
- Pre-Paid Funeral Plans
- Private Chapels of Rest
- Green Burials
- Home Arrangements
- Civil Services Available
- Bereavement Listening Service (Free to our families)



T 01234 843222

www.abbott-funerals.co.uk support@abbott-funerals.co.uk

150 BEDFORD ROAD, KEMPSTON, BEDFORDSHIRE, MK42 8BH

AIMS

Tim Kemp BA FCA
Top Barn Rectory Road
Steppingly MK45 5AT

TEL/FAX : 01525 717141
MOBILE : 07900 823 012
www.aims.co.uk
e-mail: timk@aims.co.uk

- ◆ **Professional** service providing for all your accounting and tax needs
- ◆ **Practical** advice based on 20 years experience in **running** businesses
- ◆ **Personal** approach with fixed fees relevant to the work **you** need
- ◆ **Friendly, local** accountant supporting the community for over 20 years

Please call for a free, no-obligation initial meeting

ACCOUNTANTS FOR *business*

Hills-Howson Financial Services

Financial adviser appointments available in your home or our office

The Old Post Office
53 High Street
Clophill
Beds MK45 4BE

Tel: 01525 861803
www.hills-howson.co.uk
hills.howson@btconnect.com

Including:-

Investments

Pensions

Protection

Annuities



W&H PEACOCK

AUCTIONEERS & VALUERS

Weekly Auctions

Visit the Bedford Auction Centre to enjoy the excitement of a live auction.

Antique & Modern Furniture • Clocks • Books
Ceramics & Glassware • Pictures & Prints
Bicycles • Jewellery & Watches • Collectables
Garage Tools & Equipment • Household Electrical Items
Office Furniture & Equipment • Retail Products & Stock
Vehicles • Horticultural & Commercial Equipment
Building Materials • Garden Furniture & Effects

Eastcotts Park, Wallis Way, Bedford MK42 0PE 01234 266 366 peacockauction.co.uk

THE COMPUTER MAN



Got a problem with your computer and don't know what to do? Suffering with a virus or spam?

Don't hesitate! Ring your local computer expert

**Remote repairs or home visits
(Day, evening & weekend)**

**Lap top/desk top loan
(Free pick up & drop off in local area)**

Comprehensive health check from £35 (Special Offer £35 - normally £40)
Refurbished fl at screen available from £15 • Refurbished base units available from £99



Contact Stephen Amos
07976 718567
the.computerman@ntlworld.com





rincontuition - Spanish & Maths

Expand your knowledge. Boost your confidence

Phone 01525 860743 - Mob 07952 667814

Exam techniques and preparation. Revision and practice papers: SATs, 11+ and GCSEs

Spanish for business or pleasure, all levels. GCSE & A-levels
Skills development: conversation, reading and writing

Maths: Boost your confidence and abilities

KS1, KS2, KS3, SATs, 11+ and GCSE practice papers.

References available. Reasonable rates

Enquiries: 01525 860743 - 07952 667814

rincontuition@yahoo.com



LIZZIE BROWN PET CARE & HORSE GROOM SERVICES



**DOG WALKING
PET POP-IN & FEEDING
PET/HOUSE SITTING
EQUINE GROOM***



(*BTEC Cert Equine Management)



Lizzie Brown 01525 862459 / 07500 989 700

Reliable friendly local service

Short notice available (no contract commitments)

Insured Quality references available CRB checked*

*(Disclosure & Barring Service)

Hairs & Graces

Unisex Salon



Wet Cut £19
Cut & Blow Dry £30
Colours start from £27
Special OAP rates

Opening Hours:

Monday	9.30-2.00
Tuesday	9.30-5.00
Wednesday	9.30-5.00
Thursday	9.30-8.00
Friday	9.30-8.00
Saturday	9.30-4.00

Zoe, Donna, Gemma
and Amanda look forward
to welcoming you.

Ring now to book an
appointment.
Appointments also
available with our Barber.

Burgoine Business Centre, 117 Clophill Road, Maulden MK45 2AE

01525 861491 • Loads of free parking



GARDEN DOCTOR

Rob McLeod

Pruning Specialist

Professional, Local, Experienced

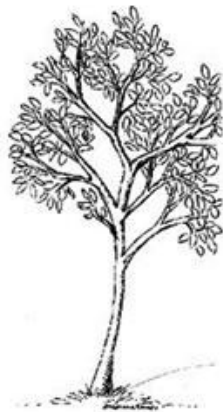
- * All tree and hedge work undertaken
- * High standard of work
- * Waste material recycled for compost
- * Free Quotations
- * Local, reliable service you can trust

Tel: 07763 239340 or 01525 861568

email: rob@gardendoctor.org.uk

www.gardendoctor.org.uk

Call the Garden Doctor and bring Good Health to your Garden



Hedging & Pruning
Shrubs & Fruit Trees
Tree Surgery & Removal
Fully certificated and insured



We'll get you up and running!

We offer the very best physiotherapy care from a friendly approachable team of nine highly trained Chartered Physiotherapists all members of the Health Professionals Council

Expert treatment including:

- Neck/Back/Hand and Tennis Elbow Pain
- Headaches/Migraine/Sciatica
- Incontinence/Pelvic/SIJ/SPD/Pregnancy Back Pain
- Sprains/Strains/Torn Ligaments
- Whiplash/RSI/Osteoporosis/Sports Injuries

Specialist Physiotherapists:

- Neurological, Paediatric, Vertigo and Dizziness

We also offer complementary treatments:

- Acupuncture, Reflexology, Massage, Indian Head Massage, Chinese Herbalist, Lymphatic Drainage and Pumps



Tel: 01525 720882 www.chartered-physiotherapy.co.uk Email: amphillphysio@btconnect.com

7 Station Square, Flitwick, MK45 1DP



The Happy Place.co.uk

On the Green beside the Post Office every Friday, 3.30-7.30pm

We are your local mobile fish and chip van, we have been parked on the green every Friday for the past 6 years. We serve only the highest quality produce, cooked fresh to order and served to you by our friendly staff.

Why don't you pop down and come and Try Our Fry!

To avoid waiting in the cold, give us a call to

place your order on: 07833 786108

A big thank you to all our customers who have loyally supported us over the past couple of years.

Chapman & Kirby Heating

Gas, Plumbing & Heating Installations

Gas Safe Registered

Boiler Servicing & Maintenance



Call us now

Tel: 01525 861255 Mob: 07831 132308

Email: info@chapmanandkirbyheating.co.uk

1C, Old Silsoe Road, Clophill, Beds., MK45 4AR

NEVILLE

FUNERAL SERVICE

Established 1875

Reassurance when you need it most

Serving the people of Bedfordshire since 1875



Neville Funeral Service

inc. George Squire & Sons since 1976

24 Clifton Road

Shefford SG17 5AE

t: 01462 813258

e: shefford@nevillefuneralservice.com



Neville Funeral Service

The Old Church Flitwick Road

Ampt Hill MK45 2NT

t: 01525 406132

e: ampt Hill@nevillefuneralservice.com



www.nevillefuneralservice.com



If you've been thinking about enjoying a great lawn this year – green, lush and weed-free, why not contact us today and let us bring your lawn to life.




We provide four seasonal treatments, as well as beneficial treatments to keep your lawn in tip-top condition - prices start from just £5* per month.



Ask us about our annual plans, which allows you to both spread the cost and save up to 25%.

GreenThumb

LAWN TREATMENT SERVICE

Simply call: 01234 709345 or visit: greenthumb.co.uk   

*Based on a lawn size of 40m²

Baths, Toilets & Showers
Sinks and Taps
Guttering
Leaks and Burst Pipes
Drainage
Handyman jobs also



Silsoe based
No call out fee – free estimates
Fully insured and guaranteed
No job too small
07720 723653 01525 864859
info@betaplumbing.co.uk
www.betaplumbing.co.uk

Washing Machines Dishwashers Dryers Electric Ovens Repairs Servicing Sales



A local family business offering a quality service at a competitive price
Est. 1981

Tel: CLOPHILL 860148
or Tim Downing direct on 07969 545 276

A member of the White Goods Trade Association
Fully Insured

the
café

AT

W&H PEACOCK
AUCTIONEERS & VALUERS

Visit

www.peacockscafe.co.uk
for more details and to view
our current menu.

Eastcotts Park, Wallis Way,
Bedford, Bedfordshire
MK42 0PE

01234 266 366



**View the salerooms for our upcoming auctions
and then relax with a coffee and a slice of cake.**

Our unique café in Bedford Auction Centre with free wi-fi and
views of the salerooms, comfortably seats over 100 customers.

We serve cooked breakfasts, paninis and sandwiches, light
lunches and snacks plus a range of hot and cold drinks.

Senior Citizen discounts available

Open Monday to Thursday from 8.30am - 3.30pm
Extended opening on Friday to 7pm. Saturday 8.30am - 4pm
(Last orders 1 hour before closing)

LOCAL ALLOY WHEEL REFURBISHMENT


mintalloys
complete alloy wheel refurbishment

Tel:
01525
860069

Alloy Wheel Repairs

Diamond Cut Alloy Wheels Repaired On Site

Powder Coat Primers & Lacquers

Fast Turnaround Alloy Wheel Welding

Tyres At Competitive Prices

NEW for 2015 - 4 Wheel Alignment Service

www.mintalloys.co.uk

Root 'n Branch

Your Local Friendly & Reliable Gardener

All aspects of Garden Maintenance undertaken
• PRUNING • MOWING • WEEDING • PLANTING • HEDGING

Southfields, Shefford
email: whooley@hotmail.co.uk

Tel: 07771 537385

Public Liability
Insured

Conifer
Kennels

Quality
BOARDING
DAY BOARDING
HOLISTIC FOOD SHOP
GROOMING & GOING HOME BATHS
OFF SITE NATURE WALKS
QUALIFIED TEAM



NUTRIMENT
ENHANCED raw diet formula

www.coniferkennels.co.uk 01525 860339



The Causeway, Clophill, Beds. MK45 4BA

Akela

WILD WASH

YAKERS



Eden
Holistic Pet Foods

GREEN & WILDS
Naturally for pets

Pre-Order
Service Available

STUART DREW ELECTRICAL SERVICES

MEMBER OF THE ECA
PART P CERTIFIED QUALIFIED TO 18TH EDITION

From extra lights & sockets, to re-wires. Fault finding and electrical safety certification. For a professional, courteous service with free estimates & all work guaranteed, please call me

29 Lincoln Way
Harlington
Beds
LU5 6NG

Fully qualified & insured
30 years experience

Telephone:
01525 875965
07941 812662



Compu-Doc

PC / laptop crisis ?

01525-402227

Call the Doc for -

Hardware & software

Diagnosis & treatment

john.stafford@compu-doc.co.uk

BURGLAR ALARMS

New Alarms Fitted or Upgrade Existing Alarms

BURGLAR ALARMS

We fit New Alarms - Wired or Wireless Systems
We can service and maintain your existing alarm

CCTV

We fit high quality systems to maximise your security.
Access your CCTV via the internet or mobile.

DOOR ENTRY

We fit a range of quality video and audio intercoms
to suit your needs.

*We are a family run business with over 35 years
experience in home security and crime prevention.*



www.maximumsecuritysystems.co.uk

Contact:

01582 864138 / 07746 111520

For a free quote and consultation

McCaffrey

Your local resource for residential
build, refurbishment and maintenance



General building works
Extensions
New builds
Internal refurbishment/alterations

Brickwork
Carpentry
Painting & decorating
Purpose made joinery

Plumbing and heating
Electrical installations
UPVC windows & doors
Garage conversions



call us to discuss your building requirements

01525 861041

info@mccaffreybuild.co.uk www.mccaffreybuild.co.uk

ADAM IN YOUR GARDEN

**TREE SURGERY, HEDGE TRIMMING,
TURFING, FENCE MAINTENANCE,
DECKING, PATIO CLEANING**



Qualified, Fully Insured, Competitive Rates
Free Estimates

TEL: 01582 518954 MOB: 07828 490360
Web Site: www.adaminyourgarden.co.uk

Based near Toddington, Bedfordshire.

**We rescue, rehabilitate & re-home stray & abandoned cats.
We have lots of beautiful cats waiting for loving homes.**

Ring the shelter on 01525 875993

or Sue on 01582 650167 to arrange a visit.



Registered Charity No. 1098984

Visit our website @www.straycatrescue.org.uk



- Suppliers of traditional and modern equipment
- Working whirlpool & spa baths, power & steam shower systems on display
- Over 40 settings on display
- Complete installation service if required
- Personal friendly service from a family run business
- Wall and floor tiles
- Accessories
- Mirrors
- Bathroom furniture
- Heated towel rails
- Saunas
- Bathroom cabinets

SHEFFORD 01462 627002

www.bathroomvogue.com

Unit 4A, Shefford Industrial Park, St Francis Way, Shefford SG17 5DZ

Hire Clophill Village Hall



Wedding Receptions
Birthdays & Special Occasions
Dances and Discos
Club & Community Meetings & Activities

Phone: 07821 643 936

Mail: Clophill.villagehall@gmail.com Web: www.clophillvillagehall.co.uk

ROGER STOREY

YOUR LOCAL PAINTER AND DECORATOR

Friendly and Reliable Service

Many Years Experience

Please phone: **01525 861253** or **07800 777615**

ANDREW BAKER WINDOWS

9 SHEFFORD ROAD
CLOPHILL BEDS
MK45 4BT

SPECIALISING IN UPVC WINDOWS,
DOORS, CONSERVATORIES,
FASCIA, SOFFITS, GUTTERS AND
CLADDING. ALSO AVAILABLE FOR CARPENTRY
WORK. NO JOB TOO SMALL OR LARGE.

20 Years experience.
Free local quotes.

FENSA

Fensa Registered
FIVE YEAR GUARANTEE

Contact Andrew: 01525862804 / 07825017855

Email: abakerwindows@gmail.com

Advertisers index

Architectural Services

S&S Coates Surveying & Design 30

Auctioneers & Valuers

W&H Peacock 33

Bathroom Services

Bathroom Vogue 42

Builders & Carpenters

McCaffrey Build 41

Stuart Benson Building Projects IFC

Car Services/Repairs

A&F Motors Ltd IFC

Mint Alloys 39

TC Coomber Car Services BC

Chimney Sweep

Poppins Chimney Sweep IBC

Cleaning Services

Daisy Cooper 23

Ovenclean 27

Computer Services

Compu-Doc 40

The Computer Man 33

Electrical Services

Stuart Drew Electrical Services 40

Financial Services

AIMS Accountants 32

ET Accountancy Services 28

Hills-Howson Financial Services 32

MB Accounting Services 44

SJ Tax & Accounting Services 25

Food and Refreshments

The Cafe at Peacocks 39

The Happy Plaice 36

Funeral Services

AL&G Abbott, Funeral Directors 31

Neville Funeral Service 37

Garden Services

Adam in your Garden 42

Garden Doctor 35

Green Thumb Lawn Treatment 38

JK Garden and Landscape Services 24

Root 'n Branch 40

Health & Beauty

A Cut Above Hairdressing 25

Ampthill & Flitwick Physiotherapy 36

Doula Root 26

Hairs & Graces 35

Linda Allsop Physiotherapy 25

Nicola Rayner Fitness 28

Pathways of Mindfulness 23

Route 66 Barbers 26

Slimming World 29

Tammys' Talons 24

Home Improvements

Christopher The Painter 24

Roger Storey - Painter & Decorator 43

David James Kitchens 22

Music and Entertainment

Greensands Community Choir 23

Nursery Schools

Clophill PreSchool BC

Clophill St Mary's C of E

Acorn Lower School and Nursery 29

Pet & Animal Services

Conifer Kennels & Cattery 40

Lizzie Brown Pet Care 34

Personal Dog Walker 25

Stray Cat Rescue 42

The Bluecat Luxury Cattery 27

Plumbing & Drainage Services

Beta Plumbing 38

Chapman & Kirby Heating 36

Warm Property Services 27

Print Services

Fidelity Design & Print IFC

Public Houses

The Stone Jug 26

Repair Services

Tim Downing Repair Services 38

Security Services

Maximum Security Systems 41

Travel Services

Select Travel Holidays 30

Tuition and Coaching Services

Rincon Tuition (Spanish & Maths) 34

TalkEasy Coaching 24

Village Hall

Clophill Village Hall 43

Windows/Replacement

Andrew Baker Windows 43

AW Windows IBC

Misty Double Glazing 27

IFC = Inside Front Cover IBC = Inside Back Cover BC = Back Cover

MB

ACCOUNTING SERVICES

accounting solutions for the

Self-Employed and **Small Business**

including

HMRC tax returns • Accounts • Bookkeeping

For a totally confidential service at **very competitive rates** contact

Richard Fairholm T: 01525 861087 M: 07714189994 E: mbaccounts@btinternet.com



Poppins Chimneys

**Chimneys Swept
Wood and Multifuel Stove
Installation & Liners**

Great Service - Great Price!



01525 860424 or 07858 688785
mark@poppinschimneys.co.uk

**NO PRESSURE SALES – YOU DEAL WITH
THE OWNER FROM START TO FINISH**



- ✓ A-rated windows as standard
- ✓ Composite doors
- ✓ High security
- ✓ Bifolding doors
- ✓ Conservatories
- ✓ Fascias, soffits and guttering
- ✓ Insurance-backed guarantee
- ✓ Fensa certificate



Contact: ANDY WOOD

01582 536944 or 07796 272539
sales@awwindows.co.uk



See reviews from satisfied customers at awwindows.co.uk

Clophill Preschool

Your local Outstanding Preschool,
based at Clophill Village Hall -
welcoming children from
2 years of age.

We'll help your child to become an inventive
and creative learner. With access to a fantastic
outdoor area, our focus is on natural and
exploratory 'play with a purpose'.



Call us today to find
out more:
07765 887868 or
07936 006381

www.clophillpreschool.co.uk



TG Coomber

**MOT'S CLASS 4/5L/7
CAR SERVICING & REPAIR
TYRES & EXHAUSTS
AIR CONDITIONING
DIAGNOSTIC CODE READING**

**Collection
& Delivery**
SERVICE AVAILABLE
Please ask

AMPHILL
01525 406330

UNIT F, AMPHILL INDUSTRIAL ESTATE, STATION ROAD, AMPHILL, MK45 2QY