

Vol 39 | No.3

FREE

# CLOPHILL SPOTLIGHT

APRIL 2017

**LOVE YOUR  
LOCAL NEWS**

# AMPTHILL PRINT CENTRE

DIGITAL PRINTING  
DESIGN & MARKETING  
DIRECT MAIL

*and much more...*

...and we're right on your doorstep at

Unit 24 Station Road Ind Est, Ampthill, MK45 2QY  
(Just off the A507 Ampthill bypass, past the Post Office)

#### WE PRINT...

- Stationery
- Newsletters
- Menus & Tent cards
- Brochures
- Flyers & Leaflets
- Catalogues
- Books & Booklets
- Direct mail
- Training Manuals
- Banners & Posters
- Greeting cards
- Calendars
- Labels & Stickers
- NCR pads
- Folders
- Exhibition panels
- CD/DVD duplication
- Photocopying

3 DAY STANDARD SERVICE | SAME DAY AVAILABLE

[www.fidelityprint.co.uk](http://www.fidelityprint.co.uk)

Get a quote 01525 300001 [quotes@fidelityprint.co.uk](mailto:quotes@fidelityprint.co.uk)

**fidelity**<sup>®</sup>

Unit 24 Station Rd Ind Est, Ampthill



D. Andrews  
P. Fleckney

## MOTORS LTD

Tel: (01525) 860292

Tel: (01525) 404919

208 Clophill Road, Maulden, Bedfordshire MK45 2AF  
89 Oliver Street, Ampthill, Bedfordshire MK45 2SA

**CAR AND COMMERCIAL VEHICLES  
ALSO CLASSIC & AMERICAN CARS  
SERVICING – REPAIRS – BREAKDOWN  
SPRAYING – M.O.T.**



### Stuart Benson Building Projects

Design, Build and Maintenance including Interior Refurbishments,  
Kitchen / Bathroom fitting, Tiling, Flooring, Skirting boards, Doors  
Garage conversions. Exterior Decking, Patios, Driveways  
Garden Offices/ Sheds

Tel: 07946 579862 or 01525 403083

Email: [benson.stuart@googlemail.com](mailto:benson.stuart@googlemail.com)



## A word from the Editor...

### *It's time to lighten up...*

I don't know about you, but now that the clocks have gone forward I can feel a definite spring in my step (or maybe it's my new shoes!).

With the lighter evenings finally here I'm less couch potato and more 'Come on, let's get out and about'.



So it's rather handy that there's plenty going on in and around the village. Flick through this month's Spotlight and you're bound to find something to do – whether it's testing your general knowledge at a quiz night or wandering around the local woods. And of course there are lots of Easter events to enjoy too!

Yep – April's looking pretty good to me. Have fun out there!

***Let's meet again in May. x***



## The magazine staff

EDITOR/ADVERTISING  
MANAGER

Helen Gent  
editorial@clophillspotlight.co.uk  
ads@clophillspotlight.co.uk

864836

DESIGN MANAGER

Chris Abrahams  
cmabrahams@yahoo.co.uk

DISTRIBUTION MANAGER

Pete Liddle

860113

TREASURER

Richard Pearson

861110

COPY DEADLINE

**20th of the month**

Don't forget you can now read Spotlight online at

**[www.clophillspotlight.co.uk](http://www.clophillspotlight.co.uk)**

*St Mary's Church, Clophill*

# *Church Fete & Village Event Saturday 20<sup>th</sup> May*

*12 – 4pm in the Church grounds*

## *FUN for ALL*

*Lots of stalls*

*Sideshow*s

*Barbeque*

*Entertainment 12.30pm Greensand Community Choir*

*1.00 pm Maypole dancing display by children  
from St Mary's School*

*Plus other attractions*

*Refreshments in the Church*

*Lunches and Teas*

*For further information –*

*call Gill 01525 861058 or Carolyn 01462 815433*



# News from Clophill Heritage Trust



## Duke of Edinburgh Volunteers

We're delighted to have three students currently completing the Service portion of their Duke of Edinburgh Awards with us. Hugo, Rosie and Lexie are helping with various jobs around the site including planting, grass cutting and helping out with our cafe. If you know anyone else who'd like to complete their Duke of Edinburgh Service with us please contact us.

## Tower Tours

With the weather (hopefully) improving we're now actively seeking Tower Tours Volunteers to enable us to run more tours of Old St Mary's at weekends. If you enjoy meeting new people, local history and spectacular views and can spare a couple of hours at the weekend, please get in touch.

## Animal Encounter Day

Come along on Easter Sunday between 2pm and 4pm and you can meet guinea pigs, hedgehogs, tortoises, giant insects and invertebrates. You can even have your photo taken with an owl (£3). Our cafe will be open, serving hot drinks and cakes, and you can also take a tour of Old St Mary's Church & Tower (adult, £3; children, £2). No need to book, just pop along. Dogs are welcome but must be kept on a lead and away from the animals.



## Ancient Warrior Training Day

We've arranged a day of special activities to teach children about warriors through the ages. They'll learn about sword-fighting and weaponry in the Viking Age then jump forward to become native Anglo Saxons and trade with the Norman invaders. The day ends with a Medieval archery tournament and crafts. From 9am–3pm on 24th May – £24 per child (ages 6 to 12). Book online.

## Earth Day Open Day

Want to try some wilderness crafts such as making willow hurdles? We're offering FREE sessions on Saturday 22nd April between 1pm and 4pm. To reserve your place, go online to book.

## Get in touch

Need to speak to us? You can contact Kayleigh Waight 07889 980872; Emily Hakansson 07825 051667; Ali Bradbury 07894 710001; or call the lodge phone 07935 911207.

For our full programme of events and to make online bookings go to  
[www.clophillecolodges.org.uk/events](http://www.clophillecolodges.org.uk/events)  
For Tower Tours, go to [www.clophillecolodges.org.uk/book-a-tower-tour](http://www.clophillecolodges.org.uk/book-a-tower-tour)



# St Mary's School News

What a fantastic day we all had on Thursday 16 March, our **Lent Appeal day**, raising money for Asthma UK. The children hugely enjoyed tackling the eight challenges outside – especially the ever popular Terminator! – as well as sharing board games inside.

SSG, who provided us with the outside activities and their staff, were amazingly committed to ensuring the children had a fantastic day and we were very appreciative that we had so many parent helpers and other volunteers to take groups of children around the activities. Friends of St Mary's provided refreshments throughout for spectators.



So far we've **raised £1,090** and still counting! Thank you to all our parents for their ongoing support. If anyone in the village would also like to donate please don't hesitate to pop into the school office and we'll add your contribution.

Our Year 4 children have now started their programme of events to help prepare them for the transition to middle school in September. We were very proud of our 12 Year 4 children who had the opportunity to take part in Tri Golf Activities at Robert Bloomfield during March and those children who took part in the Cross Country event at Alameda in Ampthill. These events enable the children to meet lots of other children from other schools who will also be moving up in September therefore hopefully making the transition more comfortable for them.

Children who attend **FunStar dance and singing club** on Wednesday mornings gave a fantastic demonstration of their dance skills to their parents during March.

Each class also took part in **'Science Week'** last month and enjoyed experiments and activities linked to the theme of 'change'. Chestnut Class were very enthusiastic in their monitoring of the changing weather. Birch Class changed the colour of flowers whilst Hazel changed and mixed colours with the use of filter papers. Rowan kept a Moon diary and Oak Class made crystals with Epsom Salts.

The School Council organised a number of events for **Red Nose Day**. We had a 'Comic Cake Competition' where the children decorated their own cakes and the funniest design won the competition. Events also included 'Guess how many marshmallows in a jar' and a lunchtime treasure hunt. The children came into school in their mufti clothes and the day ended with a cake sale, for which we'd like to thank our parents for their kind donations.

In March we announced the good news that we're now in a position to begin work on our **new Nursery building**, which will be sited at the front of the school. In fact, all being well, the work should have started by the time this edition of Spotlight is published. This will have an incredibly positive impact on the school as it will provide a beautiful bespoke space for Acorn Nursery as well as enable all of our classes to move back to their original classrooms.

In Acorn Nursery we will be able to accommodate parents who wish to take up the new 30 hours free entitlement in September and, of course, our Nursery children also have access to our breakfast and after school club, FunZone.

The new Nursery building should be ready for use by September.

## Our value this term is *Endurance*

...and we'll be reflecting on the importance of not giving up even when we find things difficult. We'll also be thinking about the types of things that last forever and that withstand difficulties.

**Don't forget** – if you'd like to donate your **Sainsburys Vouchers**, we have a collection box in the school porch.

---

## Acorn Nursery News

We're really excited about the building of the new nursery and we'll be keeping a close eye on how it's all coming along. It's a great opportunity for the children to see how a building is constructed. They'll be able to witness the different vehicles – diggers, cement mixers and lorries – coming onto the site. We'll also be able to watch how the bricks are laid and how the drains, roof and windows are added – which all ties in brilliantly with one of our themes!



We'd like to say a big 'Well done' to those children who took part in the Lent Games. They all seemed to really enjoy themselves and behaved really well. Some were a little shy about some of the activities but with a little encouragement they took part and overcame their fears.

We've been enjoying the good weather and had the soft play, which the children have enjoyed climbing over and making obstacles courses with. Our sunflower seeds have started to grow and the 'Helper of the Day' has done a good job of making sure they're watered daily while they were inside. We'll be planting them out shortly in the garden next to our peas and daffodils.

We made some lovely cards and presents for Mothering Sunday and Easter and look forward to our Easter Egg hunt at the end of term.



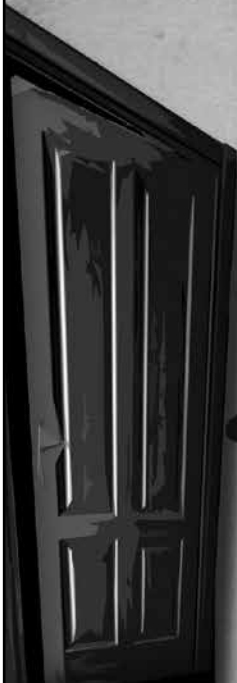
Westoning Players  
Present



# MURDERED TODEATH



BY PETER GORDON



27TH - 29TH APRIL 2017

**7.30** TICKETS  
PM **£9.00**

WESTONING VILLAGE HALL

BOX OFFICE: 07525 926780

WESTONINGPLAYERS@GMAIL.COM



# Your letters...

## *Dear cat owners*

Could you please put cat collars on your cats – now that the nesting season is about to begin it would give the birds a chance to get away. I feed the birds all year round and when I look out of my window – which I do a lot – it's not nice seeing a cat get the birds. Thank you.

## *Many thanks*

Betty Steele, Beverley Court



## *Dear spotlight*

I'd like to thank so many friends and colleagues for the help I've received from them over the past year. In the summer I was burgled and then, in December, I was badly injured after falling into a pot hole in Ampt Hill. I temporarily lost the sight in one eye, and although the sight has now returned it's not as good and I'm still having tests. I also broke some ribs, which is still very painful, but I know that time will heal.

There isn't space to thank everyone individually here but I'd like to mention all my family, Tim Sheppard for his kind visits and taking me to appointments, my great friend Fred Perrin – who helps me always – and Moyra for being such a great friend and for looking after my dog, Keely, while I was in hospital. Apologies for not being able to mention you all – so many wonderful, kind people helped me and cheered me up.

God bless you all and thank you all so much. My appreciation is of the highest level to you all.

## *Kind regards*

Cora Sheppard



## **QUIZ NIGHT & SUPPER**

**Saturday 6th May**  
**St Mary's Church, Clophill**

Come along and enjoy a quiz night and supper  
£7.50 per head

Contact **Ann Jeffrey** on **860336**  
or **Adrienne Gordon** on **860875**

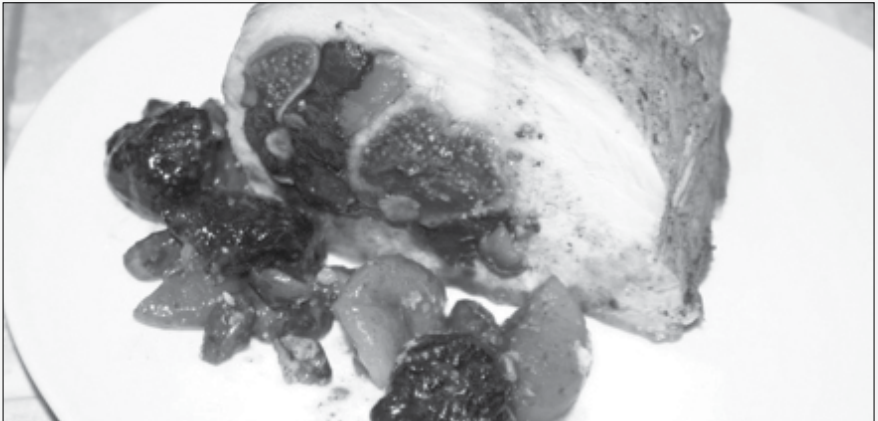
## Christine's quick 'n' easy recipe

# Chicken Breasts Stuffed with Dried Fruit



### INGREDIENTS Serves 4

- 4 medium chicken breasts
- 1 bunch small spring onions
- 1 large clove of garlic
- small glass of dry white wine
- 60g stoned dried apricots
- 60g stoned dried prunes
- 40g butter
- small splash of extra virgin olive oil
- 4 sprigs of fresh thyme
- salt and freshly ground black pepper



1. Pre-soak the dried fruit in warm water for about 30 minutes.
2. Place your chicken breasts between 2 sheets of clingfilm and beat with a rolling pin to flatten a little – not too much!
3. Cut the chicken breasts lengthways  $\frac{3}{4}$  way through to form a pocket.
4. Drain and coarsely chop the prunes and apricots.
5. Stuff each chicken breast with the dried fruit and close using cocktail sticks.
6. Put the butter and olive oil in a frying pan and bring to a medium heat.
7. Once the butter and olive oil are heated fry the chicken breasts on both sides and set aside.
8. Finely chop the spring onions and garlic clove.
9. Gently fry these in the same pan until tender but not browned.
10. De-glaze the frying pan with the white wine and add in the sprigs of thyme.
11. Put the chicken breasts back into the pan and cook for a further 10 minutes on a low heat.
12. Season to taste.
13. Remove the sprigs of thyme and the cocktail sticks and serve immediately.

# Clophill United Charities – here to help

The Trustees of Clophill United Charities (CUC) would like to bring to your attention the help the Charity can provide in times of hardship. Over the years, the generosity of others has helped the poor and needy of Clophill. Dividends from invested monies as well as income from allotment rental have been available to provide 'Relief in Need'.

The current Trustees of CUC are able to continue the tradition of **helping Clophill residents of all ages**, not only the elderly and widowed at Christmas time. They are happy to consider any reasonable request for help and would like residents to know that if they are in need, or know of someone in the village experiencing hardship, they can apply in strict confidence to the Clerk.

Under the terms of our Constitution, we are only able to help those living in the parish of Clophill but **financial assistance is available for any number of things**. In the past we have helped with payments made for kitchen appliances and household damage as well as school trips, new uniform and equipment – not only for those attending the village school but at the Middle and Upper schools or colleges.

We can only help when we are told of someone's need. Please contact us in strict confidence and see what help we can give you.

The Clerk is Gillian Hill – **01525 860539**



Bedfordshire  
Cambridgeshire  
Northamptonshire

## Wildlife walks & talks



### Walk – Maulden Church and Woods

**Monday 24th April, 6.30pm**

Meet at Maulden Church Hall car park for an evening stroll around the church and surrounding woods – catching signs of spring and hopefully enjoying a warm evening. Open to all, but numbers may need to be limited if they climb too swiftly. £1 per adult

### Walk – Listening to Nightingales

**Wednesday 3rd May, 7pm, Paxton Pits Nature Reserve**

Meet at the car park for a walk around Paxton Pits, a site famous for this sadly 'red listed' summer visitor. Your guide is Steve Halton, who has a legendary 'ear' for bird song. £1 per adult

***Walks are open to all but numbers are limited so please reserve your place***

**Email [flitvale.info@gmail.com](mailto:flitvale.info@gmail.com) or ring Ann on 07890 347327 after 6pm or at weekends**



**CLOPHILL METHODIST CHURCH**

**invites you to their**

# **SPRING CONCERT**

**with the**

# **FLITWICK SINGERS**

**on Saturday 22nd April**

**at 7.30pm**

**Tickets £6 (including light refreshments)**

For tickets & further information  
contact 01525 860695

# Clophill & District Flower Club



Last month's meeting opened with the sad news that a member of our club, Sue Bryce, had passed away. In the past the club had arranged the wedding flowers for her daughter's wedding, and our thoughts went out to the family.



We were then introduced to Barbara Collins, who proceeded to entertain us with **'Oriental Moments'** – and what moments we had.

To begin, we had a fan shape in a basket with some spruce called fat albert, fats hedera and contorted hazel for height. Then purple liatris, white narcissi, grey senecio, white ranunculus and speckled white hellebores were added to the arrangement.

Next, to give us an upright spiral coming down to the oasis, came mikallado sticks, with green shamrock chrysanthemums moving down to fatsia leaves and green variegated box, ending with a green gold cloth triangle.

An oblong dish appeared with pink cherry blossom mixed with ferns, various spiky mixed foliage, pink picot double lilies, creamy green tulips – with a Buddha peeking out from the greenery. In fact, on stage throughout the evening we had various Buddha statues sitting amongst the arrangements.

Another of Barbara's arrangement used small aspidistra leaves, fatsia japonica, hebe, green cymbidium orchids and cream carnations. Then we had Snap The Dragon – a wonderful S-shaped mix of yucca leaves, cornice sticks and phormium leaves called cream delight. The arrangement was completed with red fan along with alstromeria and tropical red anthuriums.

For the final arrangement, to give a tree effect Barbara used garrya elliptica – a clever trick to stop it twisting in oasis is to wrap an elastic band round the bottom of the stems. To this she added mahonia, palms, aspidistra, variegated ramalus, white cymbidium orchids, pink lilies and jumbo pink tulips. *Liz Coleman*

- At our open evening on 4th May, Margaret Rumens will be demonstrating her 'Bloomin' Wonderful' arrangements. For details of all our club activities go to [www.clophillflowerclub.com](http://www.clophillflowerclub.com)





# Clophill Preschool News

What a difference the weather makes! No longer are we jumping in puddles and trying to keep moving all the time just to keep warm... with the change in the weather comes the chance to stop and look and really explore and investigate.

In the digging patch **Clophill Preschool Time Team** have been unearthing some great bones, which we then laid them out and tried to work out what it was we had discovered. The children dug deep to reveal hands, feet and even a skull – some real, some not... you guess! We talked about which part of the body they thought they came from and we used lots of new language – ulna, radius, femur and skull. We examined how the bones fitted together and looked at what type of joints there were. We then incorporated body parts in our song time and sang 'Head, shoulders, knees and toes' and also played 'Chris said...' where the children were asked to put their hands on their elbow, shoulders, knees etc.

Lynne has been doing lots of gardening with the children out by our mud pit where they have been **planting plants and seeds** in repurposed old tubs and tyres. The children are excited to see what we can grow and are keen to learn how to care for their environment and develop it. On that note, the people running the allotments at the village hall have gifted us a patch to use with the children. We're all very excited! Once we've fenced it off and cleared the space we shall be growing our own vegetables, which we hope to use in our snack and for cookery.



As always, for **Shrove Tuesday** we made our own pancakes, with every child having a turn to toss one themselves – with expert help from Chris! Everyone got to sprinkle a little sugar and squееeeze on the lemon. Fine motor skills were really put to the test with the rolling up of the pancakes! The children thought the pancakes were delicious and there was even enough for staff.



This month the children have been really developing their mark-making: drawing maps and roads on paper taped to the floor to drive their cars over, using rollers to push paint over the bubble wrap table top and painting with natural paint brushes. We used grass, leaves, conifer and other different plants lashed onto twigs to create the paintbrushes. What a great way to explore texture!

For **Book Week** the children brought in their favourite books to share and on World Book Day Susan the Storyteller came in and kept the children spellbound with exciting tales. We also celebrated **International Women's Day** with Nell Lee reading the 'Paper



Bag Princess' to all the children. The Flower Club ladies came and made floral arrangements with everyone for Mother's Day and the mummies were all delighted as the children sang them a special **Mother's Day** song and presented their gifts.

We've used our funds to buy some soft play – our very own Loch Ness Monster indoor soft play. The children were excited to unwrap it, but all waited patiently for their turn to balance along

him, and some of the older ones helped the younger children by holding their hand as they walked along it. Some great gross motor skills being developed as well as building of relationships and negotiating.

- Contact Imogen on **07765 887868** or Chris on **07936 006381** or email. Our website is [www.clophillpreschool.co.uk](http://www.clophillpreschool.co.uk)

**CLOPHILL METHODIST CHURCH**  
**invite you to their**  
**LATE SPRING LUNCH**



**Wednesday 10th May**

**12.30-2pm**

**Two courses plus tea or coffee – £5**

**Contact: 01525 860695**

**CLOPHILL METHODIST CHURCH**  
**COFFEE & CROISSANT**  
**MORNINGS**



ALL PROCEEDS IN AID OF CLOPHILL METHODIST CHURCH

10am-noon

£1.50

Saturday 6th May

Saturday 3rd June

**ALL WELCOME**



# News from Rotary Club of Barton



**Who cares for the carers?** That was the question posed and then answered by Pippa Chappell who recently came to talk to the Club about the work of Carers in Bedfordshire.

Pippa explained that around 12% of the UK population currently has some sort of caring responsibility for someone else. In Bedfordshire this amounts to over 42,000 carers. Many people are carers without realising it. A carer could be a husband looking after a wife with dementia, a mother looking after a child with autism or a child caring for a parent with mobility issues.



Carers in Bedfordshire offer a wide range of services to carers to support them in the valuable work that they do. This support comes in many forms, such as training courses to help equip carers to deal with their day-to-day responsibilities, grant schemes to help with respite breaks, counselling, advice on benefits rights and befriending services. The help is given in the home, in carer's cafes, at the hospitals, and at the charity's three offices in the county.

At present the charity's 43 staff and 100 volunteers support more than 8,000 carers locally. 'Carers are integral to society – without them our economy would suffer, perhaps even collapse,' explained Pippa. 'It's estimated that last year carers saved the UK economy £132 billion – that's roughly what it costs to run the whole of the NHS for a year.'

Funding for the charity's work comes from the local authority and from grants, donations and fund-raising. Following her talk, the Club was pleased to present Pippa with a cheque for £400, from money raised at our Gastroquiz held at Silsoe Village Hall last year. For more information, go to [www.carersinbeds.org.uk](http://www.carersinbeds.org.uk).

*David Swain*

- The Club meets at Beadlow Manor Golf Club, Nr Shefford, on Tuesday evenings at 7.15pm for 7.45pm. For more information contact David Swain on 01525 861107 or visit [www.bartonleclayrotary.org](http://www.bartonleclayrotary.org)

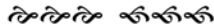
# Flittabus needs YOU !

We're taking on a **NEW ROUTE** so more  
Volunteer drivers are wanted!



Driving a Flittabus can be fun; it's also very worthwhile.

We have 3 buses and 11 routes, driven (and managed) by over 30 volunteers, providing scheduled services around Central Bedfordshire. **ANYONE can use Flittabus** but most of all we help many elderly people to remain independent.



If you can spare just one or two half days a month we would like to hear from you. **Why not come for a trial drive & see if you like it?**  
Lady drivers very welcome.

Full support & training will be provided.

**To learn more please contact Chris Tarmu on 01525 861940**

Note: New drivers do need to be under the age of 67

*Help line for bus information 07960 388 111 or see  
[www.flittabus.co.uk](http://www.flittabus.co.uk)*



---

*These notes are a resume only. Official minutes are available on the internet and notice boards. All official correspondence should be sent to the parish clerk and not individual councillors.*

## **Neighbourhood Plan**

We were delighted to see so many faces at the Neighbourhood Plan event we held last month – we counted over 55 people in attendance at various points. As the Plan is developed, it's so important for us to get input from as many villagers as possible. As part of the Plan, we created a short online survey. It should only take 10 minutes to fill out, and it would really help us to get your views. The survey is on our website, and also via <https://goo.gl/d1hzmK>

## **Parish Council vacancies**

There are vacancies at Clophill Parish Council. You'll need to attend meetings once a month and spend an hour or so a week reviewing and responding to information. It's an unpaid role but training will be given. If you think you can help, we'd love to hear from you. You can find more information about the role on the council website. For a short application form, please contact James Stirling, the Clerk to the Council, at [clerk@clophill-pc.gov.uk](mailto:clerk@clophill-pc.gov.uk) or by post at 31 Plum Tree Road, Lower Stondon SG16 6NE.

## **Bus service to Hitchin**

You may recall that we advised you recently that bus route 77, which currently runs from the Flitwick, Clophill, Silsoe and Barton areas into Hitchin on Tuesdays, would unfortunately be withdrawn from the beginning of May. This was due to Central Bedfordshire Council (CBC) starting to make changes to bus services in order to implement its new passenger transport strategy.

However, CBC is pleased to advise us that it has been working with two of its community bus operators, Flittabus and Wanderbus, who've agreed to work together to provide a replacement service, at no cost to CBC, when the existing 77 service is withdrawn. Flittabus will provide a service from the Flitwick, Maulden, Clophill and Silsoe areas, while Wanderbus will operate from Barton and Pegsdon.

Flittabus are asking for volunteers to drive their buses. If you're interested please contact Chris Tarmu on 01525 861940.

## **Clophill Spring Clean**

Last month we thanked everybody who was involved in the Clophill 'Spring Clean' in March. We'd like to take this opportunity to especially thank Chris, Michael, Josh, Luke, Victoria and Natasha for their work around Shefford Road as well as the staff and children from Clophill Pre School who used the litter-pickers and bags to collect the rubbish around the Village Hall. A great effort!

Our equipment is now being borrowed by our friends at Maulden Parish Council, who are doing a clear-up of their village this month.

# Clophill Parish Council

Continued

---

## Join our Annual Parish Meeting

On Tuesday 25th April, we'll be holding our Annual Parish Meeting and will be inviting community groups and organisations to tell the village what they've been doing in the past 12 months and their plans for the year ahead. You'll have chance to give a five-minute presentation – please send your proposal to the Parish Clerk [clerk@clophill-pc.gov.uk](mailto:clerk@clophill-pc.gov.uk) for review and potential inclusion on the agenda.

In previous years we've heard from dozens of local groups and everyone has left more educated about the great work going on in Clophill. We hope to see you all there, from 8pm at Clophill Village Hall.

*Don't forget to check out our website at [www.clophill-pc.gov.uk](http://www.clophill-pc.gov.uk)*

## Planning

### CB/17/00848/VOC

Location 81 High Street

Proposal Change of use to allow for a separate standalone residential unit independent of No 81 High Street. Conversion/extension to existing garage/workshop to form Granny annexe. The application has changed from the original permission.

**OBJECT**

### CB/17/00629/FULL

Location Land South of Top Farm, Shefford Road

Proposal Erection of a four-unit stable block and a new barn. Improve the current access and lay associated hardstanding. PC has requested that a condition is placed to restrict use to equestrian or agricultural use only.

**SUPPORT**

### CB/17/00567/FULL

Location 28 Bedford Road

Proposal Single-storey side and rear extension, with flat roof, skylights and extended existing 'shed' roof.

**SUPPORT**

### CB/17/01024/FULL

Location Warren Farm, Warren Lane

Proposal Change of use from pasture land to menage to form extension to existing menage area. The development will cause undue interference to the neighbours, who haven't been consulted. Concerns have also been raised about the current caravan and occupation of the land.

**OBJECT**

The next Parish Council meeting will take place at the Village Hall  
at 7.45pm on Tuesday 25th April 2017

# What's on in and around Clophill

16

**Sunday 16th**

**Christians Together Easter Sunday Sunrise Service** The Old Church, Clophill, 7.30am, followed by breakfast in the Eco Lodge

16

**Sunday 16th**

**Easter Sunday Family Day** Egg hunting, arts and crafts and the resident magician, The Stone Jug, from 4pm

21

**Friday 21st**

**Grand Jumble Sale** Clophill Village Hall, 7pm

APRIL

22

**Saturday 22nd**

**Spring Concert with the Flitwick Singers** Clophill Methodist Church, 7.30pm  
*See Poster in this issue for ticket info.*

22

**Saturday 22nd**

**Live Music at the Stone Jug** Dance the night away with vocalist Amy B. From 8pm

27

**Thursday 27th to Saturday 29th**

**Murdered to Death** Play by the Westoning Players, 7.30pm, Westoning Village Hall. *See Poster in this issue for ticket info*

30

**Sunday 30th**

**Sunday Cafe & Tower Tours** Clophill Old Church and Eco Lodges, 2pm-4pm.  
No need to book.

10

**Wednesday 10th**

**Late Spring Lunch** Clophill Methodist Church, 12.30pm-2pm  
*See poster in this issue for ticket info*

MAY

20

**Saturday 20th**

**Clophill Fete** St Mary's Church, noon-4pm.

## On throughout the month...

**Fridays...**

- **Clophill Toddler Group** Clophill Village Hall, 10am-noon. See 'Village Groups' for contact details

**One Saturday a month...**

- **Messy Church** 4pm-6pm, Clophill Methodist Church. Dates: 15 April; 13 May; 17 June; 15 July; 23 Sep; 14 Oct; 18 Nov; 16 Dec. All-age craft activities, worship and a meal for all the family. No fixed charge, donations welcome, children must be accompanied by an adult.  
See 'Village Groups' for contact details.

## HOLY WEEK/EASTER CHURCH SERVICES

**St Mary's Church, Clophill**

- 9 April Parish Communion with distribution of Palm Crosses, 10.45am
- 10 April Meditation for Holy Week, Campton, 7pm
- 13 April Agape Supper, 7pm
- 14 April Children's Workshop + Easter Garden with worship, 10.30am; Solemn Devotions, Haynes, 2pm
- 15 April Easter Vigil, Campton, 8pm
- 16 April Parish Communion, 10.45am
- 30 April Benefice Service, Campton, 10am

**Clophill Methodist Church**

- 14 April Good Friday Service led by Rev Graham Claydon Knights, 10.30am. All welcome.

If you have any diary dates that you would like included on this page, please email [clophillspotlight1@hotmail.co.uk](mailto:clophillspotlight1@hotmail.co.uk)

# Village groups

Beverley Court		860920
Brownies	<a href="https://enquiryym.girlguiding.org.uk">https://enquiryym.girlguiding.org.uk</a>	
Clophill Community Care	Duty Contact	07791 773705
Clophill Heritage Trust	Ali Bradbury	07894 710001
Clophill St Mary's C of E Lower School & Nursery	Sharon Kempson	860206
Clophill Toddler Group	Caroline Daniels	07734 495348
Clophill United Charities	Gillian Hill	860539
Conservation Group	Brian Adams	862297
Flower Club	Gillian Hill	860539
Friends of the Cheshire Home	Sue Pearson	861110
Funzone After School Club		07903 167493
Greensands Community Choir	Luke Howard	07975 520085
Indoor Carpet Bowls	Tony Meredith	860754
Messy Church	Victoria Higgins	07920 568861
	<a href="mailto:vicoriajhiggins@hotmail.co.uk">vicoriajhiggins@hotmail.co.uk</a>	
St Mary's PTA	Julia Skelton	07774 993973
Scouts and Cubs		<a href="http://www.scouts.org.uk/get-involved">www.scouts.org.uk/get-involved</a>
Tea and Chat	Anita Errick	860695
Tuesday Club	Betty Hampson	860750
Village Hall Booking Secretary	Marilyn Browning	07821 643936

**Leonard  
Cheshire  
Disability**

## Grand Jumble Sale

**7pm, Friday 21st April, Clophill Village Hall**

Entry: 30p per adult; accompanied children, free. Refreshments available.

All profits are donated for the direct benefit of the residents at the **Leonard Cheshire DisABILITY Home in Ampthill**.

If you have any good-quality jumble for us or would like to help at the event please call **01525 861110**.

**Clophill Friends of the Leonard Cheshire Disability Home at Ampthill**

## Parish Registers for March

**1867**

### Burials

April 12 Susan Chipperfield (?) 58  
April 18 William Cooke Lock, 76

**1917**

### Baptisms

April 25 Dennis Frank Peat

**1967**

### Burials

April 22 Samuel Stanford, 87

# Useful numbers

<b>Gas</b> (Emergency)		0800 111999
<b>Electricity</b> (Emergency)		0800 7838838
<b>Emergency Fire/Police/Ambulance</b>		999
<b>Water/Sewage</b> (Anglian Water)		0845 7145145
<b>Telephone</b>	(Customer Services) 150	(Faults) 151
<b>Highways Department</b> (Central Bedfordshire Council)		0300 3008049
<b>Benefits Agency</b> (Bedford office)		01234 361500
<b>Registrar's Office</b> (Births/deaths/marriages)		0300 3008089
<b>Rail</b> (Enquiries)		0845 7484950
<b>Buses</b> 01234 262151	(Link A Ride) 01525 840511	(Flittabus) 01582 406561
<b>Luton Airport</b>		01582 405100
<b>Swimming</b>	(Flitwick) 01525 717744	(Robinson Pool) 01234 212479
<b>LIBRARIES</b>		
	<b>Bedford</b> 01234 350931	<b>Ampt Hill</b> 01525 402278
	<b>Barton</b> 01582 881101	<b>Flitwick</b> 01525 715268

## LOCAL GOVERNMENT

<b>Central Beds Offices</b> (Chicksands)		0300 300 8000
<b>Mid-Beds MP</b>		Nadine Dorries 01462 811992
<b>Central Bedfordshire Councillors</b>		Michael Blair 01525 404513
		Paul Duckett 07988 184061
<b>Clophill Parish Council</b>		Paul Downing 01525 860350
	(Clerk)	James Stirling 01462 887226

## HOSPITALS

<b>Bedford</b> (North & South)	01234 355122	Admissions 01234 261150
		Appointments 01234 359012
<b>Luton &amp; Dunstable</b>		0845 1270127

## DOCTOR'S CLINICS

<b>Ampt Hill</b>	(Houghton Close) 01525 300898	(Oliver Street) 01525 631395
		(Greensands) 01525 631390
<b>Shefford</b>	Enquiries 01462 818620	Appointments 01462 810034
<b>Barton</b> 01582 528700		<b>Flitwick</b> 01525 715300

## POLICE

<b>County Police HQ</b>		Non Emergency 101
<b>Ampt Hill Station</b>		01234 841212
<b>Clophill Local Policing Team</b>		101
		01234 842613

## CHURCHES

<b>St Mary's Parish Church</b>		Liz Henman 01525 860108
<b>St Francis RC Church, Shefford</b>		Ian Gordon 01525 860875
<b>Clophill Methodist Church</b>		Jim Davies 01525 860829
<b>Baptist Churches</b> (Ampt Hill)	Doreen Gibbs 01525 862424	(Maulden) Ian Crawford 01525 634325
		(Shefford) Hazel Arnold 01462 812564

## SCHOOLS

<b>Clophill St Mary's C of E Lower School &amp; Nursery</b>	(Headteacher Mrs K Bingley)	01525 860206
<b>Harlington Upper School</b> , Harlington		01525 755100
<b>Preschool</b>	clophillpreschool@gmail.com (Chris) 07936 006381 or (Imogen)	07765 887868
<b>Redborne Upper School</b> , Ampt Hill		01525 404462
<b>Robert Bloomfield Middle School</b> , Shefford		01462 628800





# PETER SHARPE BUILDING SERVICES LTD

Call us first for **ALL** your building works  
and get reliability, quality & sensible prices.

- Domestic extensions
- Design & build service
- General building works, drives, patios
- Carpentry, kitchen fitting, wall & floor tiling
- Laminate flooring & hardwood flooring
- Mini digger and driver hire
- Electrical installations including Building Regulation part P certification
- Roofing repairs carried out
- Conservatories, UPVC windows

**‘BEDFORDSHIRE’S PROFESSIONAL BUILDER’**

**01525 872762 / 07850 803021**

email: [psbsltd@btconnect.com](mailto:psbsltd@btconnect.com)



**Painter and Decorator**

**Call Chris : 07950714579**

facebook: [@christopherthepainter](https://www.facebook.com/christopherthepainter)

email: [chris.minihane@btinternet.com](mailto:chris.minihane@btinternet.com)

*do you want your home brightening up?*

*all interior & exterior work*

*no job too small!*

*free no obligation quote*

*25 years experience & fully insured*



# Bowbelles Grooming Room

Dog grooming in an intimate, purpose-built grooming room with top-of-the-range equipment

**Baths or full groom • Micro chipping service • Fully insured**

**Call Becky on 07746 546410**



Find us on facebook

6 Little Lane, Clophill MK45 4BG

Telephone

**01525  
860526**

## The Stone Jug

**A Free House**

BACK STREET, CLOPHILL

2017 sees us celebrating our 35th anniversary – yes, it really has been THAT long! However, it's not out with the old and in with the new as we believe in traditional, honest values – which is why our smiler, Bob, and the matriarch, Joyce, are still holding court! Make 'The Jug' part of your tradition in 2017 and experience a 'proper pub for proper people', as my late dad used to say. Cheers!

- 5 real ales, including 2 guest pumps that change frequently (see our Facebook page for details)
- selection of wines and Prosecco by the glass – or even better, by the bottle
- home-cooked lunches Tues-Sat, 12pm-2pm



**REMEMBER OUR MOTTO**

**"A VISIT TO THE JUG IS BETTER THAN GOING TO A PUB"**

**CHEERS JOYCE & VIKKI**

[www.stonejug.co.uk](http://www.stonejug.co.uk)

[www.facebook.com/thestonejugclophill](http://www.facebook.com/thestonejugclophill)

# Fancy an ad in Spotlight?

You can advertise for as little as £50 a year!

Email [ads@clophillspotlight.co.uk](mailto:ads@clophillspotlight.co.uk)



Matthew Dibden  
- Architectural Design  
- Planning Applications  
- Building Regs

Office: **01525 860186**

Mobile: **07972 197754**

Email: **matt@daniel-design.co.uk**



[www.daniel-design.co.uk](http://www.daniel-design.co.uk)



**Tel: 07966 665654**

Web: [www.emtacademy.co.uk](http://www.emtacademy.co.uk)

Email: [carrie@emtacademy.co.uk](mailto:carrie@emtacademy.co.uk)



## EMT Academy – Emergency Medical Training is a Clophill based First Aid Training company

All EMT Academy trainers have worked professionally as Emergency Medical Technicians, Paramedics or Police Firearms Medics so we can bring real life experience and scenarios to your course.

### Courses Available

- First Aid at Work
- First Aid at Work Requalification
- Emergency First Aid at Work
- Annual Refresher
- Automated External Defibrillator
- Family First Aid
- Paediatric First Aid
- Basic Life Support
- Bespoke First Aid\*

Our feedback shows that the one-to-one practical skills taught by our instructors ensure students feel confident to deal with any unexpected medical emergency.

If you are a parent, grandparent, babysitter, childminder, carer, employer or an organisation\* e.g. sports clubs, Guides/Scouts, equestrian, please contact us, we will be happy to discuss which course will best suit your needs.

# David Carpenter

## BUILDING SERVICES

Friendly local craftsman and restorer Est. 1986

MOST BUILDING WORK UNDERTAKEN INCLUDING  
Carpentry and Joinery, Bricklaying, Roofing, Plastering, Tiling  
And much more

Please call me on: 01582 881015 Mobile: 07954 828695  
to arrange a visit to discuss your requirements.

Free estimates provided

References available

We've got  
the space  
for you!

Introducing our  
quarter-page ad size  
– want one?

Contact our Advertising Manager  
at [ads@clophillspotlight.co.uk](mailto:ads@clophillspotlight.co.uk)

**OVENCLEAN.**  
*The original oven cleaning specialists*

We clean all types of:

- Ovens
- Grills
- Ranges
- Hobs
- AGAs
- Microwaves
- BBQs
- Extractors

Fully insured, and a proud  
member of Checkatrade.com

**For a quote call Clive on:**  
**07949 233089 or**  
**0800 840 7127**

[www.ovenclean.com](http://www.ovenclean.com)

**£5 OFF**

Proud members of  
**Checkatrade.com**  
Where reputation matters



# Mayfield Dog Lodge



## Home From Home Day Care and Boarding

Based in the village of Clophill your dog will stay in the warmth and comfort of our family home where they will be treated as part of the family unit. They'll always have company, friends to play with and given care, attention, love and cuddles just as they would at home.

Every day they'll be taken on long and varied walks in beautiful countryside to run, play and explore, on or off lead (you decide), with no time restrictions.

**07966 238249**

## Mindfulness Movement & Meditation



**RELAX                      STRETCH                      MEDITATE**

**This class teaches relaxation & breathing techniques,  
together with gentle yoga-based stretches and postures**

**Clophill Centre: Thursdays 9.30am-10.45am**

**Contact Ann for more information and booking  
0779 1171980    [ann.okeeffe@btinternet.com](mailto:ann.okeeffe@btinternet.com)**

## CLOPHILL TODDLER GROUP

*Understanding the importance of a child's play*

LOTS OF TOYS, SPACE AND FRIENDS  
FOR BABIES AND TODDLERS UNDER 3

FRIDAYS 10am – 11.30am at the Village Hall  
See 'Village Groups' for contact details



# Linda Allsop

PHYSIOTHERAPY



Chartered  
Physiotherapist  
with over 30 years  
experience in both  
the Private Sector  
and the NHS.

01462 711978 | 07989 257026

[www.linda-allsop-physio.co.uk](http://www.linda-allsop-physio.co.uk)

## SAVAGE ACCOUNTANTS

- Accountants who know how businesses run
- Qualified Chartered Accountant and Chartered Tax Advisor
- Friendly Accountants who listen to your needs
- A wide range of services offered

Call

01525 552250



for a FREE initial meeting

[www.savageaccountants.co.uk](http://www.savageaccountants.co.uk)

Company Registration Number: 09214570  
Cure your tax headaches

## PERSONAL DOG WALKER

£10 per hour  
£6 per half hour

- First Aid Certified
- Insured



Text or call Corrane on

07576 473373 or 01525 630740

Corrane's personal dog walking

## SJ TAX & ACCOUNTING

### QUALIFIED ACCOUNTANT

Professional friendly services,  
Tax advice, Free initial consultation,  
Sole trades, Ltd companies,  
Bookkeeping, Payroll,  
CIS, VAT & Tax

**DOWNLOAD OUR FREE APP**  
"SJ TAX LTD"

contains lots of free tax info and  
a free income and expenses tracker

**e: [sally@sjtax.co.uk](mailto:sally@sjtax.co.uk)**

**t: 01234 831997**

**m: 07899 808592**



*Greensand*  
Greensand Community Choir  
**LOVE SINGING!**  
sing with an exciting local choir...



Come along to your local **community choir**,  
for men and women of all singing abilities!  
Mondays, 8.00-9.30 pm at St. Mary's Church, Clophill.

- Come and sing with an exciting new local choir led by a professional musical director
- Uplifting music in a variety of styles: musicals, classic pop, folksongs, sacred and world music
- Welcoming singers of all abilities - no audition, no need to read music!
- New members - come along any time for a free taster

Enquiries to:  
**greensandcommunitychoir@gmail.com**  
or ring Luke on: **01525 838199**

## ARCHITECTURAL DRAWINGS AND BUILDING DESIGN SERVICES

Professional Architectural design services provided for all types  
of private residential building projects including extensions, loft/  
garage conversions, garages and outbuildings through to new build  
dwellings with all necessary council approvals obtained.

For free estimates and advice contact Steve  
Coates on Flitwick 01525 862457 or 07960 215053.

stevecoates72@gmail.com

S & S Coates Surveying & Design, Unit 4 The Courtyard,  
r/o 13 High St, Clophill, MK45 4AB.





# Mobile Hairdresser

Reasonable prices

Reduced price for 2 or more  
clients per household

Senior Citizens discount

Text or call Corrane on

07576 473373

01525 630740



mobile beauty treatments to fit in with busy lifestyles



...because everyone deserves to be pampered

Hot stone and Swedish massage  
Indian head massage  
Pregnancy massage  
Manicures & pedicures (Shellac gels available)  
Waxing  
Eye treatments  
Facials

Affordably priced... all with the convenience and  
comfort of being in your own home

Gift vouchers available

For more information and to make  
an appointment please contact:

Elizabeth Warfield (member of BABTAC)

Tel: 07816 789071

Email: lizziewarfield@hotmail.co.uk

THE BLUECAT



Tel: 01525 861416

[www.thebluecat.net](http://www.thebluecat.net)

Find us on Facebook @thebluecatcattery  
or email us at [enquiries@thebluecat.net](mailto:enquiries@thebluecat.net)

Now open! The Bluecat is a brand new,  
luxury cattery set in the quiet area of  
Jacques Lane in Clophill. With just 14  
cat chalets, we have time to fuss, pamper  
and play with your cat to its heart's  
content whilst in our care.

Please call for further information.

## Misty Double Glazing?

Over 30  
Years  
experience.  
FREE  
Quotes

Over 30  
Years  
experience.  
FREE  
Quotes

KEEP YOUR WINDOW FRAMES...  
... WE JUST REPLACE THE GLASS!

• UPVC • Aluminium • Or Wood

Because we replace just the glass the repair is a  
Fraction of the cost of a complete replacement window.

BEFORE



AFTER



[mistydoubleglazing.co.uk](http://mistydoubleglazing.co.uk)  
QUALITY GLAZING SERVICES

01525 876808

WE ALSO REPLACE BROKEN...

• Glass • Handles • Hinges & Locks  
AND REPAIR...Patio Doors & Conservatories!

# Clophill Preschool

Welcoming children  
from **2 years** of age...

in the fantastic setting of Clophill Village Hall. Our highly qualified team is led by a qualified Teacher and a Nursery Nurse. We provide a safe, secure and stimulating environment with brilliant ideas and activities that open the doors to learning and beyond. Come and see what your 2, 3 and 4 year olds can learn with us, our door is always open.



**clohillpreschool@gmail.com**  
**www.clohillpreschool.co.uk**

**Call Imogen 07765 887868**  
**or Chris 07936 006381**



## Welcome to Clophill St Mary's C of E Lower School and Nursery

St Mary's is a Voluntary Aided Church of England Lower School, graded 'Outstanding' by Ofsted, based in the village of Clophill.

We are a small friendly village school with close links to the local community, taking children aged from 2 years 7 months to 9 years.

St. Mary's is a Values Based school which provides children with a framework for living, tightly woven into the positive Christian ethos of the school.

Our vision at St Mary's is to provide a secure, inclusive, stimulating and enjoyable child centred environment, where all children are inspired to achieve their full potential by adopting a growth mindset. Our aim is that every child will develop as a caring, respectful member of the community and society as a whole. We will achieve this through a creative curriculum based on our values, reflecting the Christian ethos of our school.

**Please call us on 01525 860206**  
**to arrange a visit**



High Street, Clophill, Bedfordshire, MK45 4BE  
Tel: 01525 860206 [www.clohillstmarysschool.co.uk](http://www.clohillstmarysschool.co.uk)  
[nursery@](mailto:nursery@clohillstmarysschool.co.uk) / [generaladmin@clohillstmarysschool.co.uk](mailto:generaladmin@clohillstmarysschool.co.uk)



# The Happy Place.co.uk

On the Green beside the Post Office every Friday  
3.30-7.30pm

We are your local mobile fish and chip van, we have been parked on the green every Friday for the past 6 years.

We serve only the highest quality produce, cooked fresh to order and served to you by our friendly staff.

Why don't you pop down and come and  
Try Our Fry!

To avoid waiting in the cold, give us a call to  
**place your order on: 07833 786108**

A big thank you to all our customers who have loyally supported us over the past couple of years.

## Clophill

### Mace

Post Office & Stores

- Fresh bread & dairy produce
- Newspapers & magazines
- Confectionery & tobacco
- Wines, beers & spirits
- Cards & stationery
- Household goods
- Baby products
- Toys & gifts
- Dry cleaning
- Photocopying
- Shoe repairs
- Post office counter services



#### Shop Hours

Mon - Sat 7.30 - 7.30 | Sun 8.00 - 1.00

#### Post Office Hours

Mon, Tues, Wed, Fri 9.00 - 1.00, 2.00 - 5.30 | Thu, Sat 9.00 - 1.00

**THE GREEN, CLOPHILL 01525 860988**

Proprietors:  
Deepak & Daksha Chandarana

**Stephens**

Your local removals & storage company



*Specialising in house removals and office relocations in the UK, Europe and Overseas.*

**REMOVALS**

Local, National, International

**STORAGE**

Secure & Containerised

**PACKING**

Full Or Part & Materials

**LONG ESTABLISHED REMOVAL COMPANY OFFERING A PROFESSIONAL, FRIENDLY SERVICE**

COMPREHENSIVE INSURANCE • FREE ESTIMATES

**01582 572967**

## **STUART DREW ELECTRICAL SERVICES**

MEMBER OF THE ECA  
PART P CERTIFIED QUALIFIED TO 17TH EDITION

From extra lights & sockets, to re-wires. Fault finding and electrical safety certification. For a professional, courteous service with free estimates & all work guaranteed, please call me

29 Lincoln Way  
Harlington  
Beds  
LU5 6NG

**Fully qualified & insured  
30 years experience**

Telephone:  
01525 875965  
07941 812662

## **ROGER STOREY**

**YOUR LOCAL PAINTER AND DECORATOR**

Friendly and Reliable Service  
Many Years Experience

Please phone: **01525 861253** or **07800 777615**

**Based near Toddington, Bedfordshire.**

**We rescue, rehabilitate & re-home stray & abandoned cats.  
We have lots of beautiful cats waiting for loving homes.**

**Ring the shelter on 01525 875993**

**or Sue on 01582 650167 to arrange a visit.**



**Registered Charity No. 1098984**

**Visit our website @[www.straycatrescue.org.uk](http://www.straycatrescue.org.uk)**

# A L & G ABBOTT

F u n e r a l   D i r e c t o r s

~ Established 1832 ~

WITH YOU WHEN IT MATTERS MOST

An independent family business continuing to  
provide a caring & professional service to Bedford,  
Kempston  
& the surrounding villages.

- 24 Hour Personal Service
- Pre-Paid Funeral Plans
- Private Chapels of Rest
- Green Burials
- Home Arrangements
- Civil Services Available



**T 01234 843222**

**[www.abbott-funerals.co.uk](http://www.abbott-funerals.co.uk)    [support@abbott-funerals.co.uk](mailto:support@abbott-funerals.co.uk)**

**150 BEDFORD ROAD, KEMPSTON, BEDFORDSHIRE, MK42 8BH**

# AIMS

Tim Kemp BA FCA  
Top Barn Rectory Road  
Steppingly MK45 5AT

TEL/FAX : 01525 717141  
MOBILE : 07900 823 012  
[www.aims.co.uk](http://www.aims.co.uk)  
e-mail: [timk@aims.co.uk](mailto:timk@aims.co.uk)

- ◆ **Professional** service providing for all your accounting and tax needs
- ◆ **Practical** advice based on 20 years experience in **running** businesses
- ◆ **Personal** approach with fixed fees relevant to the work **you** need
- ◆ **Friendly, local** accountant supporting the community for over 20 years

Please call for a free, no-obligation initial meeting

**ACCOUNTANTS FOR *business***

## Hills-Howson Financial Services

Financial adviser appointments available in your home or our office

The Old Post Office  
53 High Street  
Clophill  
Beds MK45 4BE

Tel: 01525 861803  
[www.hills-howson.co.uk](http://www.hills-howson.co.uk)  
[hills.howson@btconnect.com](mailto:hills.howson@btconnect.com)

Including:-

Investments

Pensions

Protection

Annuities



**W&H PEACOCK**  
AUCTIONEERS & VALUERS

# Auction Sales and Valuations

Valuation, collection & auction  
service of individual items through  
to complete property clearances.

Call for a free no obligation  
collection quote or email  
info@peacockauction.co.uk

**SALE ENTRIES NOW INVITED**



Bedford Auction Centre, 26 Newnham Street, Bedford MK40 3JR

**01234 266 366** [peacockauction.co.uk](http://peacockauction.co.uk)

## THE COMPUTER MAN



Got a problem with your computer and don't know what  
to do? Suffering with a virus or spam?

**Don't hesitate! Ring your local computer expert**

**Remote repairs or home visits  
(Day, evening & weekend)**

**Lap top/desk top loan  
(Free pick up & drop off in local area)**

Comprehensive health check from £35 (Special Offer £35 - normally £40)  
Refurbished fl at screen available from £15 • Refurbished base units available from £99



Contact Stephen Amos  
**07976 718567**  
[the.computerman@ntlworld.com](mailto:the.computerman@ntlworld.com)







## rincon tuition - Spanish & Maths

Expand your knowledge. Boost your confidence

01525 860743

**Exam techniques and preparation. Revision and practice papers: SATs and GCSE**

**Spanish** for business or pleasure, all levels. GCSE & A-levels

Skills development: conversation, reading and writing

**Maths:** Boost your confidence and abilities

KS1, KS2, KS3, SATs and GCSE practice papers

**DBS** checked and references - Reasonable rates

**01525 860743 - 07952 667814 [rincontuition@aol.com](mailto:rincontuition@aol.com)**



## LIZZIE BROWN PET CARE & HORSE GROOM SERVICES



**DOG WALKING  
PET POP-IN & SITTING  
HOUSE SITTING  
FREELANCE GROOM\***

(\*BTEC Equine Management)



Lizzie Brown 07500 989 700 / 01525 862459

*Reliable*

*Friendly*

*Local service*

Short notice available (no contract commitments)

*Insured Quality references available CRB checked\**

\*(Disclosure & Barring Service)



Baths, Toilets &  
Showers  
Sinks and Taps  
Guttering  
Leaks and Burst Pipes  
Drainage  
Handyman jobs also



Silsoe based  
No call out fee – free estimates  
Fully insured and guaranteed  
No job too small  
**07720 723653 01525 864859**  
info@betaplumbing.co.uk  
www.betaplumbing.co.uk

## Foot Health Practitioner

Corns, Hard Skin, Verruca, Fungal Nail Infection,  
In-growing Toe Nails, Diabetic Foot Care, Athlete's Foot,  
Pedicure, General Nail Cutting etc.

*In the comfort of your home or at my clinic*

**Ann Gibbons** MCFHP, MBAFHP.

Competitive Rates

**Tel: 01462 813252 Mob: 07872 315763**

**Web: [www.shamrockclinic.co.uk](http://www.shamrockclinic.co.uk)**

For opening hours and other details please refer to my website



## GARDEN DOCTOR

**Rob McLeod**  
Pruning Specialist

Professional, Local, Experienced

- \* All tree and hedge work undertaken
- \* High standard of work
- \* Rubbish cleared from site
- \* Free Quotations
- \* Local, reliable service you can trust



**Tel: 07763 239340 or 01525 861568**  
**email: [garden.doctor@btinternet.com](mailto:garden.doctor@btinternet.com)**

Tree Surgery & Removal  
Shrubs & Fruit Trees  
Pruning & Spraying  
Fully certificated and  
insured

Call the Garden Doctor and bring Good Health to your Garden



## We'll get you up and running!

We offer the very best physiotherapy care from a friendly approachable team of nine highly trained Chartered Physiotherapists all members of the Health Professionals Council

**Expert treatment including:**

- Neck/Back/Hand and Tennis Elbow Pain
- Headaches/Migraine/Sciatica
- Incontinence/Pelvic/SIJ/SPD/Pregnancy Back Pain
- Sprains/Strains/Torn Ligaments
- Whiplash/RSI/Osteoporosis/Sports Injuries

**Specialist Physiotherapists:**

- Neurological, Paediatric, Vertigo and Dizziness

**We also offer complementary treatments:**

- Acupuncture, Reflexology, Massage, Indian Head Massage, Chinese Herbalist, Lymphatic Drainage and Pumps



Tel: 01525 720882 [www.chartered-physiotherapy.co.uk](http://www.chartered-physiotherapy.co.uk) Email: [amphillphysio@btconnect.com](mailto:amphillphysio@btconnect.com)

7 Station Square, Flitwick, MK45 1DP

## E.T. Accountancy Services

Experienced Chartered Accountant and Chartered Tax Adviser based in Clophill providing a full range of accountancy and taxation services to businesses and private individuals.

To arrange a free initial consultation please telephone me on 01525 590465 or email [emma@et-accountancy.co.uk](mailto:emma@et-accountancy.co.uk)

*Chartered Accountant and Chartered Tax Adviser*

Emma Thoulass FCA CTA [www.et-accountancy.co.uk](http://www.et-accountancy.co.uk) 01525 590465



# Chapman & Kirby Heating

**Gas, Plumbing & Heating Installations**

**Gas Safe Registered**

**Boiler Servicing & Maintenance**



**Call us now**

**Tel: 01525 861255 Mob: 07831 132308**

**Email: [info@chapmanandkirbyheating.co.uk](mailto:info@chapmanandkirbyheating.co.uk)**

1C, Old Silsoe Road, Clophill, Beds., MK45 4AR

# NEVILLE

FUNERAL SERVICE

Established 1875

## Reassurance when you need it most

Serving the people of Bedfordshire since 1875



### **Neville Funeral Service**

inc. George Squire & Sons since 1976

24 Clifton Road

Shefford SG17 5AE

t: 01462 813258

e: [shefford@nevillefuneralservice.com](mailto:shefford@nevillefuneralservice.com)



### **Neville Funeral Service**

The Old Church Flitwick Road

Ampt Hill MK45 2NT

t: 01525 406132

e: [ampt Hill@nevillefuneralservice.com](mailto:ampt Hill@nevillefuneralservice.com)



[www.nevillefuneralservice.com](http://www.nevillefuneralservice.com)

# The UK's No.1 Lawn Care Company



- Scarification
- Aeration
- Lawn Fertilising
- Weed Control
- Moss Control
- Water Conserver
- Pest and Disease Management



GreenThumb has a variety of treatment programmes to suit your pocket that include our traditional 'pay-as-you-go' service and our new, pay monthly, Direct Debit programmes, where you can save up to 25% annually.

Our treatments start from £5 per month, that's cheaper than D-I-Y and without the hassle!

Call your local branch today for a FREE lawn analysis and no obligation quote.

**0800 0111 222**

**GreenThumb**  
LAWN TREATMENT SERVICE



Find us online at: [www.greenthumb.co.uk](http://www.greenthumb.co.uk)



- Suppliers of traditional and modern equipment
- Working whirlpool & spa baths, power & steam shower systems on display
- Over 40 settings on display
- Complete installation service if required
- Personal friendly service from a family run business
- Wall and floor tiles
- Accessories
- Mirrors
- Bathroom furniture
- Heated towel rails
- Saunas
- Bathroom cabinets

**SHEFFORD 01462 627002**

[www.bathroomvogue.com](http://www.bathroomvogue.com)

Unit 4A, Shefford Industrial Park, St Francis Way, Shefford SG17 5DZ

Woburn  
Country Foods

A Mark of Quality

## WOBURN COUNTRY FOODS

Online - Catering - Retail Butcher

- High Quality Local Meat
- 21 Day Matured Beef -
  - Farm Assured Chicken -
  - Bedfordshire Lamb -
  - Bedfordshire Pork -

The Farm Shop, West End Farm  
Haynes West End, Bedfordshire  
MK45 3RA

Order Online & Collect In Store  
[www.woburncountryfoods.com](http://www.woburncountryfoods.com)

## LOCAL ALLOY WHEEL REFURBISHMENT

  
**mintalloys**  
complete alloy wheel refurbishment

**Tel:**  
**01525**  
**860069**

**Alloy Wheel Repairs**

**Diamond Cut Alloy Wheels Repaired On Site**

**Powder Coat Primers & Lacquers**

**Fast Turnaround Alloy Wheel Welding**

**Tyres At Competitive Prices**

**NEW for 2015 - 4 Wheel Alignment Service**

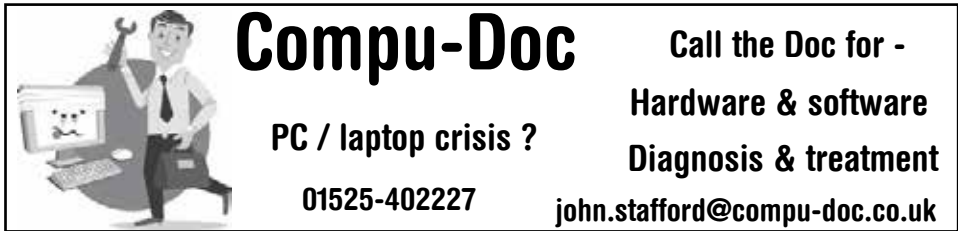
**[www.mintalloys.co.uk](http://www.mintalloys.co.uk)**





Peter Hendry  
**Traditional Window Cleaner**  
**07590599381**  
 phendry8@hotmail.co.uk

**Time to Shine**



**Compu-Doc**  
 PC / laptop crisis ?  
 01525-402227  
 john.stafford@compu-doc.co.uk

Call the Doc for -  
 Hardware & software  
 Diagnosis & treatment

**Daisy Cooper**  
 Spring cleans, one off cleans and moving home cleans all available.  
 Daisycooper22@hotmail.co.uk  
 Please call 07913 332914



Keeping your home as fresh as a Daisy

*Nature is our theme.....*

**Boarding Dogs & Cats**  
**Day Boarding - Dogs**  
**'Nature' Food Shop**  
*plus*  
**On site Grooming - Dogs**  
**Off site Walking - Dogs**

**Conifer**  
 Kennels & Cattery  
**01525 860339**

[www.coniferkennels.co.uk](http://www.coniferkennels.co.uk) 



**TRIMENT** ENHANCED raw diet formula  
 natures:menu REAL FOOD PETS LOVE  
 FROZYS  
 Green Pantry  
 ARDEN GRANGE

APPLY AND STOCKIST: Conifer Kennels & Cattery, The Causeway, Claphill, Beds. MK45 4BA



# Wrest Park Day Nursery, Silsoe

Come and visit our beautiful nursery and pre-school based within the grounds of Wrest Park. We offer care for 0-5 year olds 8am to 6pm Monday to Friday for 51 weeks of the year.



We were Rated 'Good' by Ofsted in May 2014 and they commented that 'Staff are enthusiastic, model good social behaviour to children and offer frequent praise' (Ofsted 2014).



We offer all day sessions, am or pm sessions or a 9-3 'school day' session. We accept childcare vouchers and 2,3 and 4 year old funding.

Please call us on 01525 861743 or info@wrestparkdaynursery.co.uk  
www.wrestparkdaynursery.co.uk



## BURGLAR ALARMS

*New Alarms Fitted or Upgrade Existing Alarms*

### BURGLAR ALARMS

We fit New Alarms - Wired or Wireless Systems  
\*We can service and maintain your existing alarm\*

### CCTV

We fit high quality systems to maximise your security.  
Access your CCTV via the internet or mobile.

### DOOR ENTRY

We fit a range of quality video and audio intercoms  
to suit your needs.

*We are a family run business with over 35 years  
experience in home security and crime prevention.*



www.maximumsecuritysystems.co.uk

Contact:

**01582 864138 / 07746 111520**

*For a free quote and consultation*

# Root 'n Branch

Your Local Friendly & Reliable Gardener

All aspects of Garden Maintenance undertaken  
• PRUNING • MOWING • WEEDING • PLANTING • HEDGING

Southfields, Shefford  
email: [whooley@hotmail.co.uk](mailto:whooley@hotmail.co.uk)

**Tel: 07771 537385**

Public Liability  
Insured

## ADAM IN YOUR GARDEN

**TREE SURGERY, HEDGE TRIMMING,  
TURFING, FENCE MAINTENANCE,  
DECKING, PATIO CLEANING**



Qualified, Fully Insured, Competitive Rates  
Free Estimates

**TEL: 01582 518954 MOB: 07828 490360**

**Web Site: [www.adaminyourgarden.co.uk](http://www.adaminyourgarden.co.uk)**

## ANDREW BAKER WINDOWS

9 SHEFFORD ROAD  
CLOPHILL BEDS  
MK45 4BT

SPECIALISING IN UPVC WINDOWS,  
DOORS, CONSERVATORIES,  
FASCIA, SOFFITS, GUTTERS AND  
CLADDING. ALSO AVAILABLE FOR CARPENTRY  
WORK. NO JOB TOO SMALL OR LARGE.

20 Years experience.  
Free local quotes.

**FENSA**

Fensa Registered  
FIVE YEAR GUARANTEE

Contact Andrew: 01525862804 / 07825017855

Email: [abakerwindows@gmail.com](mailto:abakerwindows@gmail.com)

# HIGH QUALITY CARPET, UPHOLSTERY, RUG AND LEATHER SUITE CLEANING

Ring Steve

(Barton) 01582 882620

(Mobile) 07769 042523

Email: [bedscarpetcleaners@gmail.com](mailto:bedscarpetcleaners@gmail.com)

[www.bedscarpetcleaners.co.uk](http://www.bedscarpetcleaners.co.uk)



# McCaffrey

Your central resource for residential  
build, refurbishment and maintenance



General Building Works  
Extensions  
Internal Refurbishment/Alterations  
Garage Conversions  
Loft Conversions

Brickwork  
Carpentry  
Painting & Decorating  
Purpose made Joinery  
Bi - Folding Door Applications

Plumbing and Heating  
Electrical installations  
UPVC/Timber Windows  
UPVC Conservatories

T. 01525 861041

E. [info@mccaffreybuild.co.uk](mailto:info@mccaffreybuild.co.uk)

W. [www.mccaffreybuild.co.uk](http://www.mccaffreybuild.co.uk)



WEC, BUILDING 52, WREST PARK,  
SILSOE, BEDFORDSHIRE, MK45 4HS

COMPANY NUMBER: 7240869

MCCAFFREY BUILDING CONTRACTORS LTD



# OSTEOPATHY

**Deborah Beare** BSc (Hons) Ost.  
Registered Osteopath

**The Clophill Centre for  
Complementary Therapy**  
Clophill Fruit Farm,  
Shefford Road  
Clophill

- Cranial & Structural Osteopathy
- Neck & Low Back Pain
- Muscle Tension
- Sports Injuries
- Arthritic aches & pains
- Headaches

To book appointments call: **07969 921112**

## **Washing Machines Dishwashers Dryers Electric Ovens Repairs Servicing Sales**



A local family business offering  
a quality service at a competitive price  
Est. 1981

**Tel: CLOPHILL 860148**  
**or Tim Downing direct on 07969 545 276**

A member of the White Goods Trade Association  
Fully Insured

# MB

## ACCOUNTING SERVICES

accounting solutions for the  
***Self-Employed*** and ***Small Business***  
including

**HMRC tax returns • Accounts • Bookkeeping**

For a totally confidential service at **very competitive rates** contact  
Richard Fairholm T: 01525 861087 M: 07714189994 E: [mbaccounts@btinternet.com](mailto:mbaccounts@btinternet.com)

## Hire Clophill Village Hall



Wedding Receptions  
Birthdays & Special Occasions  
Dances and Discos  
Club & Community Meetings & Activities

Phone: 07821 643 936

Mail: [Clophill.villagehall@gmail.com](mailto:Clophill.villagehall@gmail.com) Web: [www.clophillvillagehall.co.uk](http://www.clophillvillagehall.co.uk)



### ALL CARPENTRY & BUILDING SERVICES PROVIDED

Double Glazing • Windows & Doors • Granite Work Tops  
Kitchens & Bathrooms • Wood & Laminate Flooring • Loft & Garage Conversions  
*Mini Digger & Driver For Hire*

Call James 7 days a week on

**01462 231734    07595 752466**

[jamesbonfieldcarpentry@yahoo.co.uk](mailto:jamesbonfieldcarpentry@yahoo.co.uk)  
Shefford, Bedfordshire



USING PARABEN & SULPHATE FREE, 100% VEGAN, CRUELTY FREE PRODUCTS

## A Cut Above Hairdressing

by Rachel

In the comfort of your own home  
cutting & styling specialist

call or text : 07896 009382  
facebook: [acutaboverachel](https://www.facebook.com/acutaboverachel)

Salon experienced / Fully insured / Fully qualified to Level 3 Standard

# Advertisers index

## Architectural Services

Daniel Design & Build 24  
S&S Coates Surveying & Design 28

## Auctioneers & Valuers

W&H Peacock 35

## Bathroom Services

Bathroom Vogue 40

## Builders & Carpenters

James Bonfield Carpentry & Construction 47  
Dave Carpenter Building Services 25  
McCaffrey Build 45  
Peter Sharpe Building Services 22  
Stuart Benson Building Projects IFC

## Carpet Services

Carpet & Upholstery Cleaning 45

## Car Services/Repairs

A&F Motors Ltd IFC  
Mint Alloys 41  
TC Coomber Car Services BC

## Chimney Sweep

Poppins Chimney Sweep IBC

## Cleaning Services

Daisy Cooper 42  
Ovenclean 25  
Time to Shine – Window Cleaner 42

## Computer Services

Compu-Doc 42  
The Computer Man 35

## Electrical Services

Stuart Drew Electrical Services 32

## Financial Services

AIMS Accountants 34  
ET Accountancy Services 38  
Hills-Howson Financial Services 34  
MB Accounting Services 46  
Savage Accountants 27  
SJ Tax & Accounting Services 27

## Food Suppliers

Woburn Country Foods 41

## Funeral Services

AL&G Abbott, Funeral Directors 33  
Neville Funeral Service 39

## Garden Services

Adam in your Garden 44  
Garden Doctor 37  
Green Thumb Lawn Treatment 40  
Root 'n Branch 44

## Health & Beauty

A Cut Above Hairdressing 47  
Amphill & Flitwick Physiotherapy 38  
Deborah Pedley Osteopathy 46  
Linda Allsop Physiotherapy 27  
Mindfulness Movement & Meditation 26  
Mobile Hairdresser 29  
Molly Coddle 29  
Shamrock Clinic - Foot Health 37  
The Tanning Salon BC

## Home Improvements

Christopher The Painter 22  
Roger Storey - Painter & Decorator 32

## Medical Training Services

EMT Academy 24

## Music and Entertainment

Greensands Community Choir 28

## Nursery Schools

Clophill PreSchool 30  
Clophill St Mary's C of E Lower School and Nursery 30  
Clophill Toddler Group 26  
Wrest Park Day Nursery - Silsoe 43

## Pet Services

Bowbelles Grooming Room 23  
Conifer Kennels & Cattery 42  
Lizzie Brown Pet Care 36  
Mayfield Dog Lodge 26  
Personal Dog Walker 27  
Stray Cat Rescue 32  
The Bluecat Luxury Cattery 29

## Plumbing & Drainage Services

Beta Plumbing 37  
Chapman & Kirby Heating 38

## Post Offices

Mace Post Office & Stores 31

## Print Services

Amphill Print Centre IFC

## Public Houses

The Stone Jug 23

## Removals & Storage

Stephens 32

## Repair Services

Tim Downing Repair Services 46

## Security Services

Maximum Security Systems 43

## Take-aways

The Happy Plance 31

## Tuition Services

Rincon Tuition (Spanish & Maths) 36

## Village Hall

Clophill Village Hall 47

## Windows/Replacement

Andrew Baker Windows 44  
AW Windows IBC  
Misty Double Glazing 29

*IFC = Inside Front Cover*

*IBC = Inside Back Cover*

*BC = Back Cover*

Ads from as little as **£50** per year

For further information about advertising in Spotlight,  
please contact our Advertising Manager at [ads@clophillspotlight.co.uk](mailto:ads@clophillspotlight.co.uk)



# Poppins Chimneys

**Chimneys Swept  
Wood and Multifuel Stove  
Installation & Liners**

*Great Service - Great Price!*



**01525 860424 or 07858 688785**  
**mark@poppinschimneys.co.uk**

**NO PRESSURE SALES – YOU DEAL WITH  
THE OWNER FROM START TO FINISH**



- ✓ A-rated windows as standard
- ✓ Composite doors
- ✓ High security
- ✓ Bifolding doors
- ✓ Conservatories
- ✓ Fascias, soffits and guttering
- ✓ Insurance-backed guarantee
- ✓ Fensa certificate



**Contact: ANDY WOOD**

**01582 536944 or 07796 272539**  
**sales@awwindows.co.uk**



See reviews from satisfied customers at [awwindows.co.uk](http://awwindows.co.uk)



# The Tanning Station & Pebbles Beauty

- Sunbeds
- Massage
- Eyelash Extensions
- Bio Sculpture
- Pedicure
- Spray Tans
- Footcare Specialist
- LVL
- Facials
- HD Brows
- LCN Nail Extensions
- Manicure
- Hot Stone massage
- Waxing
- Jessica GELeration
- Threading



## Opening Times

Monday - Tuesday	09.00 - 19.00
Wednesday - Thursday	09.00 - 21.00
Friday	09.00 - 19.00
Saturday	10.00 - 16.00
Sundays & Bank Holidays	CLOSED

2 Steppingley Road, Flitwick, Bedfordshire MK45 1AJ  
01525 720 095 [www.tanningstation.co.uk](http://www.tanningstation.co.uk)

# T.C. COOMBER



MOT'S CLASS 4/7  
SERVICING & REPAIRS  
CAR & COMMERCIAL  
TYRES & EXHAUSTS  
AIR CONDITIONING  
DIAGNOSTIC CODE READING

**Collection  
& Delivery**  
SERVICE AVAILABLE  
Please ask

**AMPTHILL**  
**01525 406330**

UNIT F, AMPTHILL INDUSTRIAL ESTATE, STATION RD, AMPTHILL, MK45 2QY