

Vol 37 | No.5

FREE

CLOPHILL SPOTLIGHT

JUNE 2015



IT'S BBQ TIME!

AMPTHILL PRINT CENTRE

**DIGITAL PRINTING
DESIGN & MARKETING
DIRECT MAIL**

and much more...

...and we're right on your doorstep at

Unit 24 Station Road Ind Est, Ampthill, MK45 2QY
(Just off the A507 Ampthill bypass, past the Post Office)

WE PRINT...

- Stationery
- Newsletters
- Menus & Tent cards
- Brochures
- Flyers & Leaflets
- Catalogues
- Books & Booklets
- Direct mail
- Training Manuals
- Banners & Posters
- Greeting cards
- Calendars
- Labels & Stickers
- NCR pads
- Folders
- Exhibition panels
- CD/DVD duplication
- Photocopying

3 DAY STANDARD SERVICE | SAME DAY AVAILABLE

www.fidelityprint.co.uk

Get a quote 01525 300001 quotes@fidelityprint.co.uk

fidelity[®]

Unit 24 Station Rd Ind Est, Ampthill



MOTORS LTD

Tel: (01525) 860292

Tel: (01525) 404919

208 Clophill Road, Maulden, Bedfordshire MK45 2AF
89 Oliver Street, Ampthill, Bedfordshire MK45 2SA

**CAR AND COMMERCIAL VEHICLES
ALSO CLASSIC & AMERICAN CARS
SERVICING – REPAIRS – BREAKDOWN
SPRAYING – M.O.T.**



Stuart Benson Building Projects

**Design, Build and Maintenance including Interior Refurbishments,
Kitchen / Bathroom fitting, Tiling, Flooring, Skirting boards, Doors
Garage conversions. Exterior Decking, Patios, Driveways
Garden Offices/ Sheds**

Tel: 07946 579862 or 01525 403083

Email: benson.stuart@.googlemail.com



A word from the Editor...

Hello there...

Stoke up those barbeques – it's summer time! Let's hope we'll have plenty of sunshine to enjoy al fresco hotdogs, Pimms and picnics in the park. And some lovely warm weather will be just the job for National Bike Week, on from 13th to 21st June (<http://bikeweek.org.uk>) Hundreds of events are planned, including coastal rides, sunset cycles and, um, naked cycling.

Don't worry, you can keep your clothes on to read Spotlight. Flick through and you'll find great articles and a Diary page filled with events for the coming months.

Sadly, this month we're saying goodbye to Colin Watt, who has provided us with some fantastic pieces on Clophill's history. A huge thank you to Colin for all his time and effort – his articles will be greatly missed.

Talking of missing, is there anything you'd like to read about in Spotlight? Drop us an email and we'll see what we can do! In the meantime, have a sun-sational June.

We'll see you back here in July!



The magazine staff

EDITOR/ADVERTISING
MANAGER

Helen Gent
editorial@clophillspotlight.co.uk
ads@clophillspotlight.co.uk

864836

DESIGN MANAGER

Chris Abrahams
cmabrahams@yahoo.co.uk

DISTRIBUTION MANAGER

Steve Smith
steve.smith495@yahoo.co.uk

TREASURER

Richard Pearson

861110

COPY DEADLINE

20th of the month

Don't forget you can now read Spotlight online at
www.clophillspotlight.co.uk



Presents

Midsummer Melodies

The Grove Theatre, Dunstable

6pm Sunday 21 June 2015

Guest Soloist

International Baritone

Jeffrey Carl

Adults, £15; children under 16, £7.50

Tickets available from The Grove Theatre

Box Office

01582 602080 www.grovetheatre.co.uk

**WE ARE
MACMILLAN.
CANCER SUPPORT**

Clophill Preschool News



Hi everyone. Well, last month's large cardboard boxes that we went 'travelling' in are still a big hit with the children. They've been a submarine, houses, a post box for letters and parcels and a canvas for storyboards for the children to draw inside and around. The boxes themselves have travelled –the children took them outside into the sunshine and painted them, and they

turned them into garages to park their ride-on cars in. This easily accessible resource has been many things to lots of different children. It's encouraged the newer children in preschool to join in with their peers and stimulated conversation, turn taking, humour and adventure from all.

We've had some lovely sunny days over the last month and when one of the children tried to climb into the **Aqua play water canal** we decided it was time to take off those shoes and socks and jump right in! We used a large tray of water for the children to have fun and splash in – they loved it, and all involved laughed, shrieked and giggled with excitement. (Have a look at the video on our Facebook page). The children were keen to show us their footprints on the patio; we compared the difference in foot size and developed our mathematical language.



We also celebrated **National 'Share A Story' week**, asking our parents to come in and read stories to the children. Thank you to the parents who volunteered, the children really enjoyed having you in. Don't forget we love having parents, grandparents and other family members here to play and share their experiences with the children. If you have a bit of spare time you could play football, make a piece of art work or just play – we'd love to see you.

The sun shone for Clophill's Church Fete, where we had our Sieve the Sand stall. If you were lucky enough to find a golden coin you could exchange it for a piece of treasure from the Captain's Chest. Thank you to all those who supported us – we made a profit of £40, which will go towards our craft resources.

Our summer trip was to **Church Farm in Ardeley**. A visit to Church Farm, is like no other – it is an organic working farm with a focus on reconnecting people with the land. They are a not-for-profit community interest company, who provide training and work experience for people with learning disabilities. We had great fun feeding the animals and having the freedom to run through the woods and fields. We saw pigs, cows, turkeys, chickens and lambs which we ticked off on our I Spy sheets. We made crowns from feathers, sticks and straw to use as prompts to retell our adventure and everyone got a chance to play, chat and have fun.



This last half term will be full of fun activities which we look forward to telling you about. We have limited session places available for September, so come and visit us to see what we offer.

Chris & Imogen

• Get in touch on **07732 872685** or **clophillpreschool@gmail.com** And check out our website for news updates and future events **<http://www.clophillpreschool.co.uk>**



Flittabus



Buses for Hire

**You can hire a
16 seat Flittabus with a
driver for
community outings**

**Community Hire Line
07563 170067**

Hirers must be a not-for-profit organisation

Organisations with a section 19 permit may
be able to use their own driver

Flittabus Community Transport Ltd. Is a non-profit organisation governed by The Industrial & Provident Societies Act 1965-2002. Run and Driven by Volunteers for the Community.

NEW VOLUNTEER DRIVERS WELCOME—01525 861940

News from Clophill Heritage Trust



The Old Church and Eco lodges

A group of Year 5 Robert Bloomfield schoolchildren visited The Old Church on Tuesday 28th April for a 'History is all around' day. Accompanied by their schoolteacher, Sarah Bartishel, they spent the day investigating local history, identifying artefacts and enjoying light-hearted activities in the form of 'history time-line' games.

Clophill Heritage Trust had two stalls at the **Clophill Church Summer Fete in May** – the coconut shy and a card-selling stall, both of which were reasonably successful in economic terms. The good weather plus large turnout from local residents along with accurate throwing by mums, dads and children alike meant that by 3.15pm we'd exhausted

our supply of 100 coconuts. Many thanks to Nigel Mann greengrocer of Gravenhurst, who supplied them fresh from a London market.

June will see the connection of The Old Church and Eco lodges to the **National Grid** by UK Power Networks and the provision of a full mains electricity supply which will provide the site with power for heat, light and an enhanced security system. We're most grateful for the assistance provided and the forbearance by our neighbours whilst the works are carried out.

On Saturday 8th August we will be holding our next **Birds of Prey Photography Workshop**. The one-day event – 'American Birds Of Prey' – will be run by local wildlife photographer Andy Fox. Further details will be advertised in Spotlight and at the Post Office, and you can also contact Andy on foxy67@btinternet.com

We will be strongly involved with the **Bedfordshire Walking Festival** which runs from **5th-13th September**. Our particular focus in Clophill will be with history, geology and real ale walks all local to the village. (And, no, the latter is not a pub crawl!)

With the summer approaching, you might want to think about **volunteering with the Trust** or getting involved during the holidays for some work experience. If you'd like to get in touch with any of the team we're: Ali Bradbury (07894 710001), John Wright (07860 839845) and Barry Breed (01525 860834).

Visit us at www.ClophillEcoLodges.org.uk or make a booking at info@ClophillHeritage.org

Thankyou

...to everyone who **generously supported Jackie's Bric A Brac stall** at last month's fete. The £100 we collected has been given to the charity Greyhounds in Need.

Jacqueline Tomkinson

SPOTLIGHT on... **The Old Kindergarten**

This month's piece of Clophill history comes from **Rosemary** and **Brian Adams**, who live in The Old Kindergarten. The property was once a farm owned by the de Greys and was also run as a kindergarten by Rachel Hughes, who lived there with husband Melvin and their children.



'We moved from Ampthill to the Old Kindergarten with our three young children in 1995,' says Brian, who along with his wife Rosemary has spent the past 20 years researching the property's history. 'We got to know Mel very well because he lived next door with his daughter Deborah. He gave us various items from the Kindergarten which we'll ensure always stay with the property. One of

these is a collection of moving tributes to Rachel (she died in 1992) from the children, which makes fascinating reading.' With the passing of Mel last month, Brian and Rosemary felt it would be timely to look at The Old Kindergarten's history...

In around 1650, St John Charnock, owner of the Manor of Beadlow, built a farmhouse for a tenant on land in Clophill that had once belonged to St Albans Abbey and then to the Crown. It was constructed from a three bay Elm/Oak box frame, at least in part with timbers from a previous building. The walls were of wattle, daub, plaster and handmade bricks. The farm consisted of some 72 acres, rising to 156 acres by the first half of the 19th century. John Butcher was the most successful tenant in terms of the acreage farmed and also had important Parish roles as Roads Surveyor and Overseer of the Poor.

The farm had been acquired in the latter part of the 17th Century and prospered under the ownership of the **de Greys of Wrest Park**. It had previously passed through the hands of the troubled Earl of Elgin who lived at Houghton House in Ampthill.

In around 1850, after the retirement of John Butcher, the Earl de Grey decided that the house and barns needed to be refurbished and brought up to date, which he achieved whilst retaining the underlying historic structure of the building. He had a keen interest in architecture and was the first President of the (now Royal) Institute of British Architects. Most of the land was reallocated to other farms and the reduced acreage, approximately 9, was devoted to market gardening under new tenants, **Vincent and Mary Doggett, who had 12 children**. Vincent also had important roles as a Parish Constable and Sunday School Teacher. The Doggett's story is a remarkable documentary of Victorian life and the ups and downs of a hard- working country family.

Also in Victorian times, when education for the masses was beginning to be established, Miss Martha Spice, a Sunday School teacher and Headmistress of the girls school, lodged at the house for 24 years, between 1844 and 1868. She was the granddaughter of John Butcher.

During WWI, the de Greys had to pay death duties on the estate of the ninth Baron Lucas, **an amputee, who died heroically in his biplane on a dangerous reconnaissance mission**. Subsequently, their estate was gradually auctioned off and in 1919 the tenant of the farm, William Matthews, became the proud new owner. As reported in the National Farms Survey during WW2, William was very good at his job, and he was also responsible for increasing the acreage farmed to 50 acres.

After William died in 1953 the house was sold and five years later the new owners converted it into a private school, which continued to prosper with two subsequent owners for a total of 34 years. During this time some 300 young children passed through its kind hands, many destined for the Harpur Trust schools in Bedford.

The school was visited and blessed by the then Bishop of St Albans, Dr Runcie MC, who was later to become **the Archbishop of Canterbury**. At that time the occupants of the house were Melvin and Rachel Hughes and their three children. Melvin was an agricultural chemist at Wrest Park and a Chairman of the Parish Council, Rachel ran the school.

Since 1650 the house has had an estimated **70 occupants belonging to at least 10 families**: Glover, Flindell, Young, Butcher, Doggett, Matthews, Denvir, Williams, Hughes, Adams.

If anyone has any further information on The Old Kindergarten, please contact **Rosemary** and **Brian** on **01525 862297**

JOB VACANCIES

- **Qualified Play Leader**
- **Play Worker**

FunZone Breakfast/After School Club, Clophill

We have a vacancy for a Play Leader – NVQ Level 3/NNEB/BTEC essential – to lead exciting activities for children aged 4-12. We're also looking for an enthusiastic Play Worker (must be over 17) to assist in these duties and also prepare and serve light meals to the children. Good rates of pay offered.

For job descriptions and application forms please contact
Mrs Rosemary Ilett on **01525 860274**.

FunZone is the Breakfast and After School Club located in St Mary's Church, Clophill

CLOPHILL VILLAGE HALL

10TH ANNIVERSARY GRAND BALL

SATURDAY, OCTOBER 3, 2015

7PM - LATE

BUBBLES UPON ARRIVAL

Clophill Village Hall

KILN LANE, CLOPHILL, MK45 4DA

LIVE BAND

SIT-DOWN DINNER

LICENSED BAR

BLACK TIE OPTIONAL

TICKETS £25 PER PERSON

CONTACT STEVE - 07831 255 807

Clophill Village Hall

Annual Report May 2015



The year ending May 2015 has been another excellent year for the Village Hall.

We've continued with our policy of controlling costs tightly and building high occupancy levels at the hall to drive revenue. As a result of this strong financial performance we've been able to install a full set of **new double-glazed doors** for the hall. We were never happy with the initial installation and did at the time gain some credit back from the builders, but after nine years the doors had started to cause problems, so we've had them all replaced with a much higher-quality option. Alongside this, with the welcome support of the Parish Council, we've **extended the perimeter fence** adjacent to Kiln Lane, which was a bit of a safety risk given the steep incline that borders the road.

The Committee staged a number of **social events** in the year both to drive extra income and, maybe more importantly, bring the village together in a social setting. We've also conducted our customary Santa's Sleigh tour, and supported the Village Fete with our BBQ.

I attended the AGM of the Parish Council recently and was given the opportunity to talk through the aims and objectives of the Village Hall Management Committee. One positive spin-off was that the various management of the football teams in Clophill were keen to support a bid for the funding of **changing rooms** which could be built onto the Village Hall, and the Parish Council also indicated their support of such a development. It's early days but this would be a welcome extra facility for our young sports boys and girls.

Alongside the project to build the changing rooms, we'd like to extend the capacity and utilisation of the hall by adding a **'sun room'** onto the area where the patio currently sits. As the hall is currently running at very high occupancy, this would help manage that capacity more effectively. This is an ambitious project that would probably cost over £40,000, so we'd need lots of funding support. If you have any experience of raising funding or know some possible sources of funding for which we could apply, please do contact me.

This year the 'new' Village Hall will be 10 years old and we plan to hold an **Anniversary Ball on Saturday 3rd October** to celebrate (see our poster opposite). We've already floated the idea of the event with the main village user groups and the response has been very positive.

A customary thank you goes to all members of the Village Hall Management Committee for all their hard work and personal time devoted to the upkeep of the hall. A special thank you goes to Peter Sharpe who retired from the Committee this year; Peter was an integral part of the development of the 'new' hall and has been a great asset to the team in the last nine years.

Our Committee is reducing somewhat in size and we'd **really welcome some new members**. It was striking in the recent Parish Council elections how many new faces were willing to step up and serve the community. If there's anyone in the village who'd like to show similar support to the Village Hall Management Committee, please contact me on **07831 255807**

Key Issues for 2015-2016

- Continue to manage our costs and revenues
- Maintain the quality of the fabric of the hall at least cost
- Maintain a good fund-raising calendar
- Expand the Village Hall Management Committee membership

Steve Langhorn, Chair, Clophill Village Hall Management Committee



Clophill & District Flower Club

Members and visitors to our May meeting were entertained by National Demonstrator Irene Bowkett. Irene is one of the club's favourite demonstrators and always keeps us entertained with funny stories, songs and beautiful, colourful arrangements. We were in for a treat. Her theme was 'Curtain Up' which took us through some of the shows and songs that she loved.

The song 'Buttons and Bows' from the film **Pale Face** was Irene's first arrangement. On a black-busted lady adorned with a hat with buttons, purple bows and feather boa, she arranged purple and glittered-painted Aspidistra leaves shaped into bows, purple Lisianthus, huge bright yellow Gerberas and dark red Carnations. While she worked, Irene sang 'Buttons and Bows', accompanied by those in the audience who could recall the film.



Phantom of the Opera came next. Gold curtains, red tassels, white masks and beautiful candlesticks with big white candles in a black window frame were the setting for white Carnations and dark red Roses. Then it was Cats, complete with a lamp post, dustbins and cans. White Broom cascaded down from the lamp post together with peach Carnations, peach Gerberas and choc-orange Anthuriums.

We were then entertained to **West Side Story** and the colourful song 'America'. A black frame entwined with purple and pink ribbons was the backcloth for pink Gerberas, purple and lilac Lisianthus, Lilac, red Carnations and red Anthuriums. For **Carmen Miranda**, the arrangement depicted one of the singer's famous fruit cocktail hats. Irene used Spot Laurel leaves, Fern, Golden Conifer and Rubber Plant Leaves (Ficus Elastica) with red Anthuriums, also adding coconuts, bananas, green, red and purple peppers and yellow grapes.

Last but not least was **Joseph and the Amazing Technicolour Dreamcoat**. On top of a gold tripod Irene used gold fans, yellow Broom, trailing yellow Lady Banks Roses, dark blue Delphiniums, green Viburnum, pink Roses, light and dark mauve Lilac, yellow Gerberas and pink Carnations. Foliage used throughout was Soft Ruskus, Fatsia, Phormium, Red Robin (Photini Fraseri), Aspidistra and Begonia leaves.

All the arrangements had more than one element to them which made for an exciting raffle plus two bunches of flowers. Twenty ladies went home with lovely flowers.

Christine Baker, Committee Member



Let's talk about... keeping your financial records

with Sally Cobban



Hello everyone. I often get asked about record keeping. So if you want to know how long the HMRC expects you to keep your records read on...

If you have to do a self-assessment tax return then you need to keep records to fill the return in correctly. HMRC has no rules on how you must keep your records, so you can keep them on paper, digitally or on a software programme. Bear in mind that HMRC can charge you a penalty if your records aren't accurate, complete and readable. And if your records have been lost or destroyed you need to make every effort to get copies and duplicate invoices etc.

If you're trading and are in business as a sole trader or partnership then you must keep your records for **at least five years** after the 31st January submission deadline – which is why I tell my clients it's six years. A limited company must keep at least six years of records. It will be longer if, for example, you have bought a piece

of machinery that you keep for 10 years – you'll need to keep the records for the machinery until you scrap or sell it.

For those of you who are trading, whatever your legal entity you don't have to keep your accounting records on a software system like Sage or Kashflow – Excel will do the job perfectly well in many cases. However if you have lots of customers and suppliers, I'd recommend a software package as it can help you keep track of what's owed to you and what you may owe to suppliers.

Like any software, though, you have to be careful inputting the data as if you want good information out then you have to put good information in. It's always worth getting some help with the bookkeeping side of your business if this is out of your comfort zone doing – frankly, your time is better spent on getting more work in and sub-contracting the paperwork to someone with experience.

As usual, if you'd like any more info please do get in touch.
I'm at **sally@sjtax.co.uk** or call me on **07899 808592**

Christine's quick 'n' easy recipe

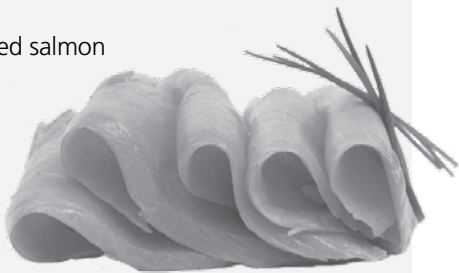
Creamy smoked salmon risotto



INGREDIENTS Serves 4

- 250g arborio rice
- 100g of smoked salmon (3-4 slices)
- 1 medium shallot
- ½ glass dry white wine
- 1 tsp tomato concentrate
- 1lt fish stock
- 1 unwaxed lemon
- chives – finely cut with scissors
- 20g of butter
- small jar/pot salmon mousse (100g)
- salt & freshly ground black pepper

1. Finely chop the shallot and fry over a moderate heat in the butter and 1 ladle of warm water for 2-3 minutes.
2. Add in the rice and stir well until the rice has absorbed all the juices.
3. Add in the dry white wine and allow it to be absorbed by the rice.
4. Add in the tomato concentrate and mix in well.
5. Cook the risotto adding in the fish stock a little at a time until the rice is cooked to your liking.
6. Retain one slice of the smoked salmon.
7. Add in the salmon mousse and the smoked salmon which has been finely chopped.
8. Adjust the seasoning to taste.
9. Cut the retained slice of smoked salmon into 4 strips and roll them up.
10. Divide the risotto onto four warm plates.
11. Decorate the top with the strips of smoked salmon and the finely cut chives.
12. Sprinkle with some finely grated lemon zest.



Italian Cookery Demonstration

11.30am, Saturday 3rd October, at Casa Fellini

I'll be featuring four recipes which you will be able to taste with a glass of wine or two, or a soft drink. Recipe sheets will be available to take home.

Tickets cost **£10 per person** and all proceeds from the day will be donated to the St Mary the Virgin restoration fund. There'll also be a raffle so do remember your wallet.

As space is limited please book early – call me on 861012

St Mary's School News



Our value for June is *Humility*

In school we'll remember how Jesus showed humility when he washed the feet of his disciples. We'll emphasise the close link between the values of humility and friendship by pointing out that self-importance and boastful behaviour won't attract friends. People like Jessica Ennis and Mo Farah will be held up as examples as they didn't respond to their victories by boasting that they were the best. We'll use the story of 'The Tortoise and the Hare', reflecting on the fact that the boastful actions of the hare didn't help him to win the race. We want our pupils to have high self-esteem so we will emphasise how they can be proud of themselves and their achievements without boasting or undermining others.

At home you may like to look at the story of 'The Tortoise and the Hare' together as a family and talk about the moral behind the story. You could encourage your children to acknowledge the things they are good at, be proud of these things and think how they can use their strengths to help other people. Look out for times when children are helpful around the house without being told or expecting a reward, and respond with lots of praise.

Events for June and July

The children have many exciting events to look forward to during the last half term of the year.

12 June

End June

2 July

3 July

7 July

School disco at the Village Hall

Year 4 Residential Trip to Caythorpe Court

Sports Day

Transition day for the whole school

Year 1 and 2 visit to Butterfly World, St Albans

Our year 4 children also have lots of activities based at Robert Bloomfield Academy to help them feel as comfortable and confident as possible when they leave us in July to start Bloomfield in September.

Finally, on 17th July – the last day of term – we have our year 4 Leavers Assembly and Service. It will be an excellent opportunity for both the parents and children to celebrate their time spent at St Mary's and for us to say goodbye. We'll be very sorry to see our year 4 children leave but will be wishing them every happiness in their new schools.

The new St Mary's school term starts for the children on Monday 7th September.

Acorn Nursery News

We've been looking at stories based around farm animals, learning about the animals and the main events in the stories. We've created a large farm display which we add to each week with the different animals, and in the garden we've had three structures to represent the Three Little Pigs Houses and used masks to re enact the story. The children loved our special visitors – Harley, the Shetland Pony, and Rose, the Hen – so thank you to Mrs Warner and Mrs Sharpe for bringing them in.

Mrs K. Bingley, Headteacher

Cora's Garden Fete

12.30-5pm, 27th June
122a High Street, Clophill

Come along to Cora Sheppard's summer garden fete
in aid of Keech Hospice Care.

- Bric-a-brac • Books • Plants
- Pictures • Clothes
- Cake stall • Tombola • Raffle



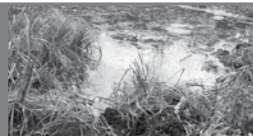
If you have any items you'd
like to donate, please contact
Cora on **01525 860 230**

Cora's last garden fete, in aid of Alzheimer's Research, raised a fantastic £1,600



Bedfordshire
Cambridgeshire
Northamptonshire

Wildlife walks & talks



Invertebrate Day

Saturday 4th July, 10am-12.30pm and 1.30pm-4pm, Flitwick Moor

Join Colin Carpenter and experts from the Beds Natural History Society to investigate the great variety of insects, snails and other small creatures on this magical wetland. Families especially welcome; children must be accompanied by a parent or guardian.

A Butterfly Walk

Saturday 25th July, 10.0am, Sharpenhoe Clappers

A classic chalk escarpment, an ancient woodland and an old quarry, rich with summer flowers – discover what butterfly species are about with noted expert Dr Wilf Powell. *£1 per adult*

Open to all. For walks, please contact us to reserve a place. Email flitvale.info@gmail.com
or ring **Ann** on **07890 347327** between 6pm and 8pm or at weekends

Clophill Parish Council

Notes from the Parish Council Meeting held on 26 May 2015

Readers are reminded that this is a resume only of the meeting. Official minutes are available both on the internet and notice boards. All official correspondence should be sent to the parish clerk and not individual councillors.

This was the first parish council meeting since the elections earlier this month. At the commencement of the meeting Peter Clarke was voted in as Chairman and Roland Browne was voted in as Vice Chairman. The Chairman welcomed five new parish councillors to the meeting: Susan Barlow; Louise Hodge; Terry Lee; Gianpaolo Mantini; Giles Warner. He said he hoped that both they and the village would benefit from their contributions. He also paid tribute to those who had previously served on the council and thanked them for the time and effort they'd put in for the benefit of the parish.

Our three District Councillors were also in attendance – Mike Blair, Paul Duckett and Paul Downing (Paul, as most will know, is also a Clophill Parish Councillor).

Public Question Time

There were several members of the public in attendance, with most of their questions having been dealt with in the surgery prior to the commencement of the meeting. There was, however, a series of questions concerning the ongoing work at Paradise Farm situated on The Causeway. Recently there had been several large fires, one of them being so large that the fire brigade attended. In addition, it was stated that lorries were bringing in rubble to the premises. New buildings had also been erected. The villager was informed that the Council is liaising with Central Bedfordshire Council and our District Councillors. The Enforcement Officer is aware and we will continue to work with the owner of the land and the Planning Authority to resolve any problems.

Police Report

The council received a report from Bedfordshire Police regarding crime within the village. Reported crime is again low but during these warmer, lighter nights do remember to ensure that you secure your windows and doors when going to bed and, if you've been in the garden, to lock garages and outhouses locked. It's easy to forget.

Lands

Roger Catton, as some will know, undertook the job of village custodian, keeping our main streets and our recreation ground clear of rubbish. As Roger has now retired, we're now looking for someone else to do this job. The salary is £25 for three hours work a week, and no heavy lifting is required. If you're interested please contact the parish clerk or one of the other parish councillors.

The Neighbourhood Plan

The questionnaires have now gone to every household in the village and it's hoped that the majority will be returned, completed, to the collection centres. Once in, they will be analysed and the results used to help plan the future of our village.

Planning

CBB/15/0001619/FULL

Location: Manor Cottage, Ampthill Road, Clophill

Proposal: Large rear extension and the addition of a front porch. The property is in an isolated position and the additional accommodation is for elderly relatives. **SUPPORT**

Clophill Parish Council

Continued

CB/15/01852/FULL

Location: The Stables, Brickwall Farm, Kiln Lane, Clophill
Proposal: Conversion of an existing brick garage and shed to a two-bedroom dwelling. This proposal is outside the village settlement area.

OBJECT

CB/TCA/15/00163

Location: 114 High Street, Clophill
Proposal: To fell two Conifer trees in the front garden.

SUPPORT

CB/15/01552/FULL

Location: Sandfield, The Slade, Clophill
Proposal: An addition to this new build is the proposal of a swimming pool and enclosure. This is already a huge dwelling in one of our smallest lanes and the proposal is seen as over-development.

OBJECT

CB15/01606/FULL

Location: 22 Jacques Lane, Clophill
Proposal: Application for a cattery and erection of buildings. The parish council has received a number of complaints from residents in the lane. The siting of the proposal is next to an adjoining neighbour and there are concerns regarding the use of the lane by an increased number of people visiting the cattery.

OBJECT

The next meeting of the parish council will be on 30 June, commencing at 7.45pm. There will be a surgery 15 minutes prior to the meeting

Clophill Methodist Church News

On behalf of the fundraising committee, we'd like to say a huge thank you to those members who have stood down this year after tirelessly working hard to raise much-needed funds for the Methodist Church and for Charities over many years. We hope that we can continue all your good work – thank you so much.

We now have a new committee, a mixture of old and new members, and our main focus this year will be raising funds to finance a re-tiling of the church roof. We've aptly named this our 'raise the roof' fund. We've already raised £450 from our Spring Fair, so a big thanks to all who supported this event.

Nicola Wood

Dates for your diary...

- **4th July** – BBQ, noon onwards, ticket only.
- **12-13th September** – Harvest Festival Weekend with themed Messy Church, stalls and our Harvest Service.
- **26th September** – barn dance, tickets £10

For tickets contact Nick and Victoria Higgins on **01525 862885**

Village groups

Beverley Court	Sharon Soper	860920
Boxing Club	Loraine Freeman	07714 014484
Brownies	https://enquiryym.girlguiding.org.uk	
Clophill Community Care	Duty Contact	07791 773705
Clophill Heritage Trust	Ali Bradbury	07894 710001
Clophill Parish Action	Ali Bradbury	07894 710001
Clophill St Mary's C of E Lower School & Nursery	Sharon Kempson	860206
Clophill Toddler Group	Emma Topliff	07921 810424
Clophill United Charities	Gillian Hill	860539
Conservation Group	Brian Adams	862297
Crafty Pastimes	Anita Errick	860695
Flower Club	Gillian Hill	860539
Friends of the Cheshire Home	Sue Pearson	861110
Funzone After School Club	Rosemary Ilett	860274
Indoor Carpet Bowls	Tony Meredith	860754
Messy Church	Victoria Higgins	07920 568861
	victoriajhiggins@hotmail.co.uk	
Pre-school	clophillpreschool@gmail.com	07732 872685
St Mary's PTA	Lindsey Jones	07879 430956
Scouts and Cubs	Ralph Rayner	403956
Tuesday Club	Betty Hampson	860750
Village Hall Booking Secretary	Marilyn Browning	07821 643936

Parish registers for June

1815

Baptisms

June 18 Eleanor Izzard

Burials

June 10 James Linford, son of Thomas, 19 (see last month for Sarah Linford burial)

June 29 Ann Garner, wife of William

1865

Baptisms

June 4 Ellen Wittamore (?)
Elizabeth Wittamore (?)

Marriages

June 16 Charles Huckle, 24, to Mary Ann Emery, 26

Burials

June 6 Sarah (?) infant
June 8 Emma Joyce, infant

1915

Baptisms

June 6 Francis Harold Robinson
Audrey Ruth Robinson
John Edward Rickett (?)
June 20 Dorothy (?) Johnson
Alfred John Dunham
James Sydney Sharman

No marriages or burials recorded

1965

Baptisms

June 6 Philip Michael Rushton

Marriages

June 19 Rodney George Everett, 29, to Jonquel (?) Felicity Lammass

Burials

June 18 Frank Woodward, 80
June 24 Arthur John Odell, 66

ST MARY'S CHURCH REGISTERS FOR APRIL/MAY 2015

Baptism

April 24 Edward James Hadley Terleph

Funeral

May 11 Melvin (Mel) Hughes, 92

What's on in and around Clophill

JUNE



Sunday 14th

Free entry to the Ailesbury Mausoleum & Crypt Maulden, from 3-5pm.
Refreshments available in St Mary's Church, Church Road, Maulden.



Sunday 21st

Midsummer Melodies With guest soloist, international baritone Jeffrey Carl.
6pm, The Grove Theatre, Dunstable. *See the poster in this issue for ticket details*



Sunday 21st

Free entry to the Ailesbury Mausoleum & Crypt Maulden, from 3-5pm.
Refreshments available in St Mary's Church, Church Road, Maulden.



Saturday 27th

Cora's Garden Fete Summer fete in aid of Keech Hospice Care, 12.30-5pm,
122a High Street, Clophill.

JULY



Sunday 12th

Gourmet Food Fair Noon-5pm, Clophill Village Hall. *Free entrance*

AUGUST



Thursday 6th, 13th, 20th and 27th

Messy Church Mornings Coffee, chat and craft activities, 10am-11am,
at Clophill Methodist Church. £1 per adult.

SEPTEMBER



Thursday 3rd

Messy Church Mornings Coffee, chat and make a scarecrow for Harvest
at Clophill Methodist Church.



Sunday 13th

Free entry to the Ailesbury Mausoleum & Crypt Maulden, from 3-5pm.
Refreshments available in St Mary's Church, Church Road, Maulden.

On throughout the month...

Wednesdays...

- **'Tea and Chat'** 10.30am-noon,
Clophill Methodist Church Schoolroom
- **Zumba Toning** 8pm-9pm, Clophill Village Hall

Fridays...

- **Clophill Toddler Group** Clophill Village Hall,
10am-11.30am See 'Village Groups' for
contact details

One Saturday a month...

- **Messy Church** 4pm-6pm, Clophill
Methodist Church, 20 June; 18 July;
12 September; 10 October; 14 November;
12 December. All-age craft activities, worship
and a meal for all the family. No fixed charge,
donations welcome, children must be
accompanied by an adult. See 'Village
Groups' for contact details.

If you have any diary dates that you would like included on this page,
please email clophillspotlight1@hotmail.co.uk

Useful numbers

Gas (Emergency)			0800 111999
Electricity (Emergency)			0800 7838838
Emergency Fire/Police/Ambulance			999
Water/Sewage (Anglian Water)			0845 7145145
Telephone	(Customer Services) 150	(Faults)	151
Highways Department (Central Bedfordshire Council)			0300 3008049
Benefits Agency (Bedford office)			01234 361500
Registrar's Office (Births/deaths/marriages)			0300 3008089
Rail (Enquiries)			0845 7484950
Buses 01234 262151	(Link A Ride) 01525 840511	(Flittabus)	01582 406561
Luton Airport			01582 405100
Swimming	(Flitwick) 01525 717744	(Robinson Pool)	01234 212479

LIBRARIES

	Bedford	01234 350931	Ampthill	01525 402278
	Barton	01582 881101	Flitwick	01525 715268

LOCAL GOVERNMENT

Central Beds Offices (Chicksands)			0300 300 8000
Mid-Beds MP		Nadine Dorries	01462 811992
Central Bedfordshire Councillors		Michael Blair	01525 404513
	Paul Duckett 07988 184061	Mark Smith	01525 402560
Clophill Parish Council		Peter Clarke	01525 861179
	(Clerk)	Mrs Lyn Lyman	01908 584159

HOSPITALS

Bedford (North & South)	01234 355122	Admissions	01234 261150
		Appointments	01234 359012
Luton & Dunstable			0845 1270127

DOCTOR'S CLINICS

Ampthill	(Houghton Close) 0844 8151055	(Oliver Street)	01525 631395
		(Greensands)	01525 631390
Shefford	Enquiries 01462 818620	Appointments	01462 810034
Barton 01582 528700		Flitwick	01525 715300

POLICE

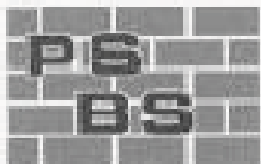
County Police HQ		Non Emergency	101
Ampthill Station			01234 841212
Clophill Local Policing Team			101
			01234 842613

CHURCHES

St Mary's Parish Church	(Gill Jones) 01525 861058	or (Liz Henman)	01525 860108
St Francis of Assisi Shefford			01462 813436
Clophill Methodist Church		(Mr Jim Davies)	01525 860829

SCHOOLS

Clophill St Mary's C of E Lower School & Nursery	(Headteacher Mrs K Bingley)		01525 860206
Harlington Upper School , Harlington			01525 755100
Redborne Upper School , Ampthill			01525 404462
Robert Bloomfield Middle School , Shefford			01462 628800



PETER SHARPE

BUILDING SERVICES LTD

**Call us first for ALL your building works
and get reliability, quality & sensible prices.**

Domestic extensions

Design & build service

General building works, drives, patios

Carpentry, kitchen fitting, wall & floor tiling

Laminate flooring & hardwood flooring

Mini digger and driver hire

Electrical installations including
Building Regulation part P certification

Roofing repairs carried out

Conservatories, UPVC windows

‘BEDFORDSHIRE’S PROFESSIONAL BUILDER’

01525 872762 / 07850 803021

email: psbsltd@btconnect.com



Lemon Drop DESIGNS

Fashion design: Wedding dresses

• Prom dresses • Ball gowns • Cocktail dresses

Alterations: Taking in/up • Zips replaced • Repairs

Soft furnishings: Curtains • Blinds • Cushions

Upholstery: Dining chairs • Seat pads

• Loose covers • Headboards recovered

• Ottomans padded and buttoned

Fully qualified designer and upholsterer.

Over 25 years experience.

Friendly service. Based in Clophill

T: 01525 861623 M: 07714014484

E: lorainefreeman2316@gmail.com



lemondrop2316



CLOPHILL TODDLER GROUP

Understanding the importance of a child's play

LOTS OF TOYS, SPACE AND FRIENDS
FOR BABIES AND TODDLERS UNDER 3

FRIDAYS 10am – 11.30am at the Village Hall
See 'Village Groups' for contact details



Telephone
**01525
860526**

The Stone Jug

A Free House

BACK STREET, CLOPHILL

We're now about as technical as Vikki can cope with – chip & pin and our very own website and Facebook page. You can expect more cheerful bar staff in 2015 due to Bionic Bob's new hip! Other than that, we're still a quality 'boozer', as my late dad would've said.

- 5 real ales, including 2 guest pumps that change frequently
(see our Facebook page for details)
- selection of wines and Prosecco by the glass – or even better, by the bottle
- home-cooked lunches Tues-Sat, 12pm-2pm



REMEMBER OUR MOTTO

"A VISIT TO THE JUG IS BETTER THAN GOING TO A PUB"

CHEERS JOYCE & VIKKI

www.stonejug.co.uk

www.facebook.com/thestonejugclophill

A L & G ABBOTT

Funeral Directors

~ Established 1832 ~

WITH YOU WHEN IT MATTERS MOST

An independent family business continuing to
provide a caring & professional service to Bedford,
Kempston
& the surrounding villages.

- 24 Hour Personal Service
- Pre-Paid Funeral Plans
- Private Chapels of Rest
- Green Burials
- Home Arrangements
- Civil Services Available



T 01234 843222

www.abbott-funerals.co.uk support@abbott-funerals.co.uk

150 BEDFORD ROAD, KEMPSTON, BEDFORDSHIRE, MK42 8BH



Tomkinson's Stained Glass Ltd

is looking to purchase antique stained glass windows, in any condition.

Contact Stephen Tomkinson on 01525 838479 or 07831 861641
or email stainedglass@talktalk.net www.vitraux.co.uk

Compu-Doc[®]

Sick PC or laptop?

Call the Doc for -

Hardware & software

Diagnosis & treatment

01525-402227

John.stafford@compu-doc.co.uk

"Treating local computers since 2000!"



Helping Hands
The Home Care Specialists

Est. 1989



Do you need a Helping Hand?

Our **local** care team has been providing award winning quality homecare since 1989.

A family run company we offer you a one-to-one 24 hour live in care service that enables you or your loved one to remain at home with compassion and dignity by assisting with: personal care, companionship, errands and housekeeping.

So if you are looking for an **alternative to residential care** or as a **short term answer** whilst recovering from illness or operation - then we're here to help.



To find out how we can help you,
call: 0808 180 1017 or
visit: www.helpinghands.co.uk



Full Bottle Fitness

Work Hard. Have fun. Get fit!

Military style outdoor bootcamps

Mobile Personal Training

Call Sam - 07809557291

Mobile Sports Massage

Call Tisha - 07955737777

info@fullbottlefitness.co.uk

www.fullbottlefitness.co.uk



Greensand Community Choir
LOVE SINGING!
sing with an exciting local choir...

Come along to your local **community choir**,
for men and women of all singing abilities!

Mondays, 8.00-9.30 pm at St. Mary's Church, Clophill.

- Come and sing with an exciting new local choir led by a professional musical director
- Uplifting music in a variety of styles: musicals, classic pop, folksongs, sacred and world music
- Welcoming singers of all abilities - no audition, no need to read music!
- New members - come along any time for a free taster



Enquiries to:

greensandcommunitychoir@gmail.com

or ring Luke on: 01525 838199



TREE SERVICES

- 🌳 Fully qualified and insured
- 🌳 Large or small trees
- 🌳 All aspects of tree work undertaken
- 🌳 Hedge trimming
- 🌳 Free quotes

Michael Martin

t: 01525 860771

m: 07598 767753

e: mmtreeservices@outlook.com



Matthew Dibden

- Architectural Design
- Planning Applications
- Building Regs

Office: **01525 860186**

Mobile: **07972 197754**

Email: matt@daniel-design.co.uk



www.daniel-design.co.uk



DAVID JAMES KITCHENS

Luxury Handcrafted Kitchens

☎ 01525 864921



2 The Courtyard | 13 High Street | Clophill | Bedfordshire | MK45 4AB
T: 01525 864921 | E: davidjameskitchens@gmail.com | www.davidjameskitchens.net

ARCHITECTURAL DESIGN AND SURVEYING SERVICES

**Professional architectural design services provided
for all types of private residential building projects
with all necessary council approvals obtained**

We offer a free initial consultation/home visit where we provide project-specific guidance and an estimate of fees or why not pop into our office at

The Courtyard, r/o 13 High Street, Clophill

No VAT is payable for design and drawing services on residential projects

We also provide advice & assistance with Insurance Claims, Maintenance & Repair issues and Party Wall Surveying Services



01525 862457 | info@cdmsd.co.uk | www.cdmsd.co.uk

Bring in this advert for a 10% discount on our fees



Coates Dixon & Mitchell
Surveying & Design

Mobile Hairdresser

Reasonable prices

**Reduced price for 2 or more
clients per household**

Senior Citizens discount

Text or call Corrane on

07783 622602

01525 630740



mobile beauty treatments to fit in with busy lifestyles

...because everyone deserves to be pampered

Hot stone and Swedish massage

Manicures & pedicures (Shellac gels available)

Waxing

Eye treatments

Facials

Affordably priced... all with the convenience and
comfort of being in your own home

Gift vouchers available

For more information and to make
an appointment please contact:

Elizabeth Warfield (member of BABTAC)

Tel: 07816 789071

Email: lizziewarfield@hotmail.co.uk



Life and Career Coaching

Helping you make positive changes

- In the wrong job but unsure how to make changes?
 - Lacking in confidence or direction?
- Do you need support building a business?
- Could your work-life balance be better?

Professional coaching can help you regain control
of your life by helping you structure change at any
age and stage of your career

I'm a qualified coach with 10 years' experience.

I work from my Practice in Hitchin or by phone/Skype.

Get in touch for a free consultation.

www.glyniskozmacoaching.com

Member Association for Coaching (MAC)

07952 724 299

Misty Double Glazing?

Over 30
Years
experience.
FREE
Quotes

Over 30
Years
experience.
FREE
Quotes

**KEEP YOUR WINDOW FRAMES...
... WE JUST REPLACE THE GLASS!**

• UPVC • Aluminium • Or Wood

Because we replace just the glass the repair is a
Fraction of the cost of a complete replacement window.

BEFORE



AFTER



mistydoublinglazing.co.uk
QUALITY GLAZING SERVICES

01525 876808

WE ALSO REPLACE BROKEN...

**• Glass • Handles • Hinges & Locks
AND REPAIR...Patio Doors & Conservatories!**



HEARN HOTEL — FOR DOGS —

- Home from home family environment
- Holiday, weekend, overnight or day boarding
- Two long walks per day, plus access to the garden
- Many happy laps to sit on!

The Hearn Hotel For Dogs
thehearnhotelfordogs@gmail.com
T: 01525 862209 M: 07739 099318
3 Old Silsoe Road, Clophill, Beds MK45 4AR

For furry friendly care,
call Michelle Hearn



For Paws

1-2-1 Dog Training & Behavioural Consultations

PLUS

- Dog walking • Puppy pop-ins • Cat feeding • Pet drop-ins
- (we do everything from cleaning out hutches to putting your chickens to bed)



For more information go to **www.forpaws.info** or
contact **Jo Deeks** Dip Dog Psy IMDT (formerly Stringer)
on **07576 854184**



Welcoming children from **2 years** of age

in the fantastic setting of Clophill Village Hall. Our highly qualified team is led by a qualified Teacher and a Nursery Nurse. We provide a safe, secure and stimulating environment with brilliant ideas and activities that open the doors to learning and beyond. Come and see what your 2, 3 and 4 year olds can learn with us, our door is always open.

Opening times:

Monday 9:15 – 3:15 Tuesday/Wednesday/Thursday 9:15 – 1:15

clophillpreschool@gmail.com

www.clophillpreschool.co.uk

07732 872685



Welcome to Clophill St Mary's C of E Lower School and Nursery

CLOPHILL
St Mary's
C of E SCHOOL

St Mary's is a Voluntary Aided Church of England Lower School based in the village of Clophill. We are a small friendly village school with close links to the local community, taking children aged from 2 years 7 months to 9 years.

St. Mary's is a Values Based school which provides children with a framework for living, tightly woven into the positive Christian ethos of the school.

Our vision at St Mary's is to provide a secure, inclusive and stimulating child centred environment, where all children are inspired to achieve their full potential.

Our aim is that every child will develop as a caring, respectful member of the community and society as a whole. We will achieve this through a creative curriculum based on our values, reflecting the Christian ethos of our school.

**Please call us on 01525 860206
to arrange a visit**



High Street, Clophill, Bedfordshire, MK45 4BE








Tel: 01525 860206 stmarysclophill@cbc.beds.sch.uk www.stmaryslower.info

SEALAWN BOARDING CATTERY

126 High St, Clophill, Beds, MK45 4BL



Situated around a private lake within 8 acres of Bedfordshire countryside, this stunning and peaceful setting is exclusively for cats

-  Inspection visits most welcome
-  Open 7 days a week except Public Holidays
-  Highest standard of hygiene & cleanliness observed
-  Heated accommodation with large covered external runs
-  Shared boarding available to cats from the same household
-  All ages of cats welcome
-  Collection and delivery service available

Established for over 30 years, the highly competent team of staff at Sealawn look forward to welcoming your cat for the ultimate care experience whilst you are away from home

Contact us for a full colour brochure

Telephone: **01525 860585**

Email: **sealawn@btinternet.com**

Visit our website: **www.sealawn.com**

NO PRESSURE SALES – YOU DEAL WITH THE OWNER FROM START TO FINISH



- ✓ A-rated windows as standard
- ✓ Composite doors
- ✓ High security
- ✓ Bifolding doors
- ✓ Conservatories
- ✓ Fascias, soffits and guttering
- ✓ Insurance-backed guarantee
- ✓ Fensa certificate



Contact: ANDY WOOD

01582 536944 or 07796 272539

sales@awwindows.co.uk



See reviews from satisfied customers at **awwindows.co.uk**



The Happy Place.co.uk

On the Green beside the Post Office every Friday
3.30-7.30pm

We are your local mobile fish and chip van, we have been parked on the green every Friday for the past 6 years.

We serve only the highest quality produce, cooked fresh to order and served to you by our friendly staff.

Why don't you pop down and come and
Try Our Fry!

To avoid waiting in the cold, give us a call to

place your order on: 07833 786108

A big thank you to all our customers who have loyally supported us over the past couple of years.

Clophill

Mace

Post Office & Stores

- Fresh bread & dairy produce
- Newspapers & magazines
- Confectionery & tobacco
- Wines, beers & spirits
- Cards & stationery
- Household goods
- Baby products
- Toys & gifts
- Dry cleaning
- Photocopying
- Shoe repairs
- Post office counter services



Shop Hours

Mon - Sat 7.30 - 7.30 | Sun 8.00 - 1.00

Post Office Hours

Mon, Tues, Wed, Fri 9.00 - 1.00, 2.00 - 5.30 | Thu, Sat 9.00 - 1.00

THE GREEN, CLOPHILL 01525 860988

Proprietors:
Deepak & Daksha Chandarana

HIGH QUALITY CARPET, UPHOLSTERY & LEATHER CLEANING

Ring Steve

(Barton) **01582 882620**

Email: bedscarpetcleaners@gmail.com

STUART DREW ELECTRICAL SERVICES

MEMBER OF THE ECA
PART P CERTIFIED QUALIFIED TO 17TH EDITION

From extra lights & sockets, to re-wires. Fault finding and electrical safety certification. For a professional, courteous service with free estimates & all work guaranteed, please call me

29 Lincoln Way
Harlington
Beds
LU5 6NG

**Fully qualified & insured
30 years experience**

Telephone:
01525 875965
07941 812662

Markham Architectural Salvage

www.markhamreclaimed.co.uk

Reclaimed Timber Specialists

Oak Beams – Doors – Flooring – Bricks

Bespoke Furniture – Landscaping Materials

Mirrors – Roofing Materials

Opening Hours: Monday Friday 9am – 5pm Saturday 9am – 1pm

Tel: 01525 876428 or Mobile: 07766 051307

Upper East End Farm, Goswell End Road, Harlington, Bedfordshire, LU5 6NU



GARDEN DOCTOR

Rob McLeod
Pruning Specialist

Professional, Local, Experienced

- * All tree and hedge work undertaken
- * High standard of work
- * Rubbish cleared from site
- * Free Quotations
- * Local, reliable service you can trust

Tel: 07763 239340 or 01525 861568
email: garden.doctor@btinternet.com

Call the Garden Doctor and bring Good Health to your Garden



Tree Surgery & Removal
Shrubs & Fruit Trees
Pruning & Spraying
Fully certificated and insured

SHEFFORD BUILDING SUPPLIES LTD

44 HIGH STREET, SHEFFORD, BEDS

Key Cutting
Tools
Timber
Sheet Materials
Gardening
Paint



Gas
Electrical
Plumbing
Sand & Cement
Domestic
Ironmongery

Tel: 01462 813381

TRULY AN ALADDIN'S CAVE

Free delivery

AIMS

Tim Kemp BA FCA
Top Barn Rectory Road
Steppingly MK45 5AT

TEL/FAX : 01525 717141
MOBILE : 07900 823 012
www.aims.co.uk
e-mail: timk@aims.co.uk

- ♦ **Professional** service providing for all your accounting and tax needs
- ♦ **Practical** advice based on 20 years experience in **running** businesses
- ♦ **Personal** approach with fixed fees relevant to the work **you** need
- ♦ **Friendly, local** accountant supporting the community for over 20 years

Please call for a free, no-obligation initial meeting

ACCOUNTANTS FOR *business*

**In an uncertain financial world
you can be certain of good advice.**

We can offer you complete financial advice with a friendly and professional service at your home or our office.

Hills-Howson Financial Services

The Old Post Office
53 High Street
Clophill
Beds MK45 4BE

Tel: 01525 861803
www.hills-howson.co.uk
hills.howson@btconnect.com

Including:-

Investments

Pensions

Protection

Annuities



W&H PEACOCK Established 1901

AUCTIONEERS & VALUERS

Auction Every Saturday

Viewing every Friday 8.30am - 8.00pm

Entries for our weekly sales can include:

Antique & Modern Furniture • Clocks • Books
Ceramics & Glassware • Pictures & Prints • Bicycles
Jewellery & Watches • Garage Tools & Equipment
Household Electrical Items • Timber & Building Materials
Office Furniture & Equipment • Retail Products & Stock
Horticultural & Commercial Equipment • Vehicles
Garden Furniture & Effects • Collectables

COLLECTION SERVICE AVAILABLE



Bedford Auction Centre 26 Newnham Street, Bedford MK40 3JR



01234 266 366 www.peacockauction.co.uk

THE COMPUTER MAN



Got a problem with your computer and don't know what to do? Suffering with a virus or spam?

Don't hesitate! Ring your local computer expert

**Remote repairs or home visits
(Day, evening & weekend)**

**Lap top/desk top loan
(Free pick up & drop off in local area)**

Comprehensive health check from £35 (**Special Offer** £35 - normally £40)
Refurbished fl at screen available from £15 • Refurbished base units available from £99



Contact Stephen Amos
07976 718567
the.computerman@ntlworld.com



ROGER STOREY

YOUR LOCAL PAINTER AND DECORATOR

Friendly and Reliable Service

Many Years Experience

Please phone: **01525 861253** or **07800 777615**

Washing Machines Dishwashers Dryers Repairs Servicing Sales



A local family business offering
a quality service at a competitive price
Est. 1981

Tel: CLOPHILL 860148

or Tim Downing direct on 07969 545 276

A member of the White Goods Trade Association
Fully Insured

CTP CONSTRUCTION

Local Building Company

Established for over 25 years

U.K. Trades Approved

No job too small - Competitive prices

Free estimates given on all Building Work

Tel: Silsoe 01525 860105

www.ctpconstruction.co.uk



Music Tuition

Flute and Music Theory

Susan York MA, BA (Hons), LTCL, MSTAT
Clophill (01525) 860711



Baths, Toilets &
Showers
Sinks and Taps
Guttering
Leaks and Burst Pipes
Drainage
Handyman jobs also



Silsoe based
No call out fee – free estimates
Fully insured and guaranteed
No job too small
07720 723653 01525 864859
info@betaplumbing.co.uk
www.betaplumbing.co.uk

Foot Health Practitioner

Corns, Hard Skin, Verruca, Fungal Nail Infection,
In-growing Toe Nails, Diabetic Foot Care, Athlete's Foot,
Pedicure, General Nail Cutting etc.

In the comfort of your home or at my clinic

Ann Gibbons MCFHP, MBAFHP.

Competitive Rates

Tel: 01462 813252 Mob: 07872 315763

Web: www.shamrockclinic.co.uk

For opening hours and other details please refer to my website



Poppins Chimneys

**Chimneys Swept
Wood and Multifuel Stove
Installation & Liners**

Great Service - Great Price!



01525 860424 or 07858 688785
mark@poppinschimneys.co.uk

Amphill and Flitwick Physiotherapy Clinic



The very best physiotherapy care from a friendly approachable clinic with ten highly trained Chartered physiotherapists
Daytime, Saturday and evening appointments
We also offer:
Reflexology ~ Pilates ~ Nutrition ~ Homeopathy



7 Station Square - Flitwick - Beds - MK45 1 DP
Telephone: 01525 720882
Fax 01525 720886
www.chartered-physiotherapy.co.uk

E.T. Accountancy Services

Experienced Chartered Accountant and Chartered Tax Adviser based in Clophill providing a full range of accountancy and taxation services to businesses and private individuals.

To arrange a free initial consultation please telephone me on
01525 590465 or email emma@et-accountancy.co.uk

Chartered Accountant and Chartered Tax Adviser

Emma Thoulass FCA CTA www.et-accountancy.co.uk 01525 590465

Chapman & Kirby Heating

Gas, Plumbing & Heating Installations

Gas Safe Registered

Boiler Servicing & Maintenance



Call us now

Tel: 01525 861255 Mob: 07831 132308

Email: info@chapmanandkirbyheating.co.uk

1C, Old Silsoe Road, Clophill, Beds., MK45 4AR

NEVILLE

FUNERAL SERVICE

Established 1875

Reassurance when you need it most

Serving the people of Bedfordshire since 1875

Neville Funeral Service

inc. George Squire & Sons since 1976

24 Clifton Road

Shefford SG17 5AE

t: 01462 813258

e: shefford@nevillefuneralservice.com



Neville Funeral Service

The Old Church Flitwick Road

Amphill MK45 2NT

t: 01525 406132

e: amphill@nevillefuneralservice.com



www.nevillefuneralservice.com

The UK's No.1 Lawn Care Company



- Scarification
- Aeration
- Lawn Fertilising
- Weed Control
- Moss Control
- Water Conserver
- Pest and Disease Management



GreenThumb has a variety of treatment programmes to suit your pocket that include our traditional 'pay-as-you-go' service and our new, pay monthly, Direct Debit programmes, where you can save up to 25% annually.

Our treatments start from £5 per month, that's cheaper than D-I-Y and without the hassle!

Call your local branch today for a FREE lawn analysis and no obligation quote.

0800 0111 222

GreenThumb
LAWN TREATMENT SERVICE



Find us online at: www.greenthumb.co.uk



- Suppliers of traditional and modern equipment
- Working whirlpool & spa baths, power & steam shower systems on display
- Over 40 settings on display
- Complete installation service if required
- Personal friendly service from a family run business
- Wall and floor tiles
- Accessories
- Mirrors
- Bathroom furniture
- Heated towel rails
- Saunas
- Bathroom cabinets

SHEFFORD 01462 627002

www.bathroomvogue.com

Unit 4A, Shefford Industrial Park, St Francis Way, Shefford SG17 5DZ



Woburn Country Foods

Online - Catering - Retail Butcher

High Quality Local Meat

- 21 Day Matured Beef -
- Farm Assured Chicken -
- Bedfordshire Lamb -
- Bedfordshire Pork -

Farm Shop

**West End Farm, Haynes West End
Bedford, MK45 3RA**

Order Online & Collect In Store
www.woburncountryfoods.com



LOCAL ALLOY WHEEL REFURBISHMENT



Tel:
01525
860069

Alloy Wheel Repairs

Diamond Cut Alloy Wheels Repaired On Site

Powder Coat Primers & Lacquers

Fast Turnaround Alloy Wheel Welding

Tyres At Competitive Prices

NEW for 2015 - 4 Wheel Alignment Service

www.mintalloys.co.uk



RICHARDSONS OF AMPHILL LTD

ESTABLISHED 1944



Fine Jewellery
Antique Clock Restoration
Gold Buying Centre



The Market House, 6 Church Street, Ampthill, Bedfordshire, MK45 2EH

Telephone: 01525 403474
www.richardsonsofampthill.co.uk

Stephen's Plants

at Maulden Garden Centre on the A507 bypass (near A6 / Clophill)



for your

Seasonal and hardy plants
Vegetable seeds and plants
Hanging baskets and tubs
plus composts and fertilisers
all with EXPERT ADVICE *and a smile*

Telephone: 01525 861696

Conifer Kennels & Cattery

THE CAUSEWAY CLOPHILL

TELEPHONE 01525 860339



The home of
LYRENSTAN

STANDARD LONG HAired DACHSHUNDS

HEATED KENNELS & CAT CHALETs WITH INDIVIDUAL RUNS
INSPECTION WELCOME ANYTIME

Wrest Park Day Nursery, Silsoe

Come and visit our beautiful nursery and pre-school based within the grounds of Wrest Park. We offer care for 0-5 year olds 8am to 6pm Monday to Friday for 51 weeks of the year.

We were Rated 'Good' by Ofsted in May 2014 and they commented that 'Staff are enthusiastic, model good social behaviour to children and offer frequent praise' (Ofsted 2014).

We offer all day sessions, am or pm sessions or a 9-3 'school day' session. We accept childcare vouchers and 2,3 and 4 year old funding.

Please call us on 01525 861743 or info@wrestparkdaynursery.co.uk
www.wrestparkdaynursery.co.uk



BURGLAR ALARMS

New Alarms Fitted or Upgrade Existing Alarms

BURGLAR ALARMS

We fit New Alarms - Wired or Wireless Systems
We can service and maintain your existing alarm

CCTV

We fit high quality systems to maximise your security.
Access your CCTV via the internet or mobile.

DOOR ENTRY

We fit a range of quality video and audio intercoms
to suit your needs.

*We are a family run business with over 35 years
experience in home security and crime prevention.*



www.maximumsecuritysystems.co.uk

Contact:

01582 864138 / 07746 111520

For a free quote and consultation

Root 'n Branch

Your Local Friendly & Reliable Gardener

All aspects of Garden Maintenance undertaken
• PRUNING • MOWING • WEEDING • PLANTING • HEDGING

Southfields, Shefford
email: whooley@hotmail.co.uk

Tel: 07771 537385

Public Liability
Insured

ADAM IN YOUR GARDEN

**TREE SURGERY, HEDGE TRIMMING,
TURFING, FENCE MAINTENANCE,
DECKING, PATIO CLEANING**



Qualified, Fully Insured, Competitive Rates
Free Estimates

TEL: 01582 518954 MOB: 07828 490360

Web Site: www.adaminyourgarden.co.uk

ANDREW BAKER WINDOWS

9 SHEFFORD ROAD
CLOPHILL BEDS
MK45 4BT

SPECIALISING IN UPVC WINDOWS,
DOORS, CONSERVATORIES,
FASCIA, SOFFITS, GUTTERS AND
CLADDING. ALSO AVAILABLE FOR CARPENTRY
WORK. NO JOB TOO SMALL OR LARGE.

20 Years experience.
Free local quotes.

FENSA

Fensa Registered
FIVE YEAR GUARANTEE

Contact Andrew: **01525862804 / 07825017855**

Email: **abakerwindows@gmail.com**

Stephens

Your local removals & storage company



Specialising in house removals and office relocations in the UK, Europe and Overseas.

REMOVALS

Local, National, International

STORAGE

Secure & Containerised

PACKING

Full Or Part & Materials

LONG ESTABLISHED REMOVAL COMPANY OFFERING A PROFESSIONAL, FRIENDLY SERVICE

COMPREHENSIVE INSURANCE • FREE ESTIMATES

01582 572967

McCaffrey

Your central resource for residential build, refurbishment and maintenance



General Building Works

Extensions

Internal Refurbishment/Alterations

Garage Conversions

Loft Conversions

Brickwork

Carpentry

Painting & Decorating

Purpose made Joinery

Bi - Folding Door Applications

Plumbing and Heating

Electrical installations

UPVC/Timber Windows

UPVC Conservatories

T. 01525 861041

E. info@mccaffreybuild.co.uk

W. www.mccaffreybuild.co.uk



WEC, BUILDING 52, WREST PARK,
SILSOE, BEDFORDSHIRE, MK45 4HS

COMPANY NUMBER: 7240869

McCAFFREY BUILDING CONTRACTORS LTD



OSTEOPATHY

Deborah Pedley BSc (Hons) Ost.
Registered Osteopath

**The Clophill Centre for
Complementary Therapy**
Clophill Fruit Farm,
Shefford Road
Clophill

- Cranial & Structural Osteopathy
- Neck & Low Back Pain
- Infant Feeding & Sleeping Problems
- Muscle Tension
- Sports Injuries
- Arthritic aches & pains
- Headaches

To book appointments call: **07969 921112**

GARDEN SERVICES FOR MID BEDS



Grass Cutting, Hedge Trimming,
Shrub Pruning, Mole Control
and General Maintenance
Local and Reliable Service

Ring John on 01525 874690
or Mobile 07710 452436
John Abraham your local gardener



MB

ACCOUNTING SERVICES

accounting solutions for the

Self-Employed and ***Small Business***

including

Bookkeeping • Accounts • Tax returns • Cash flows

For a totally confidential service at **very competitive rates** contact
Richard Fairholm T: 01525 861087 M: 07714189994 E: mbaccounts@btinternet.com



rincon tuition – Spanish & Maths

Expand your knowledge. Boost your confidence

01525 860743

Exam techniques and preparation, revision and practice papers.

Spanish for business or pleasure, all levels. Skills development.

Maths all levels: KS1, KS2, KS3; SATs and GCSE practice papers

CRB certified & references – Reasonable rates

01525 860743 - 07952 667814

rincontuition@aol.com

Hire Clophill Village Hall



Wedding Receptions

Birthdays & Special Occasions

Dances and Discos

Club & Community Meetings & Activities

Phone: 07821 643 936

Mail: Clophill.villagehall@gmail.com Web: www.clophillvillagehall.co.uk



**SPECIALISTS IN KITCHEN
& BATHROOM FITTING
FLOOR & WALL TILING**

**FREE DESIGN, ADVICE &
NO OBLIGATION QUOTES**

“Our success is your satisfaction”

Tel: Darren – 01234 307753 Mob: 07866 699822

e-mail: darrenmeyern@googlemail.com

Advertisers index

Architectural Services

Coates Dixon & Mitchell 26
Daniel Design & Build 25

Auctioneers & Valuers

W&H Peacock 35

Bathroom Services

Bathroom Vogue 40

Builders & Carpenters

CTP Construction 36
McCaffrey Build 45
Peter Sharpe Building Services 20
Stuart Benson Building Projects IFC

Building Supplies

Shefford Building Supplies Ltd 33

Care Services

Helping Hands 23

Carpet Services

Carpet & Upholstery Cleaning 32

Car Services/Repairs

A&F Motors Ltd IFC
Mint Alloys 41
TC Coomber Car Services BC

Chimney Sweep

Poppins Chimney Sweep 37

Cleaning Services

Merry Maids IBC

Computer Services

Compu-Doc 23
The Computer Man 35

Dressmaking & Upholstery

Lemon Drop Designs 21

Electrical Services

Stuart Drew Electrical Services 32

Financial Services

AIMS Accountants 34
ET Accountancy Services 38
Hills-Howson Financial Services 34
MB Accounting Services 46

Food Suppliers

Woburn Country Foods 41

Funeral Services

AL&G Abbott, Funeral Directors 22
Neville Funeral Service 39

Garden Services

Adam in your Garden 44
Garden Doctor 33
Garden Services for Mid Beds 46
Green Thumb Lawn Treatment 40
Michael Martin Tree Services 25
Root 'n Branch 44
Stephen's Plants 42

Health & Beauty

Amphill & Flitwick Physiotherapy 38
Deborah Pedley Osteopathy 46
Full Bottle Fitness 24
Mobile Hairdresser 27
Molly Coddle 27
Shamrock Clinic - Foot Health 37
The Tanning Salon IBC

Home Improvements

David James Kitchens 26
Dome Interiors 47
Markham Architectural Salvage 32
Roger Storey - Painter & Decorator 36
Tomkinson's Stained Glass Ltd 23

Jewellers

Richardsons of Amphill Ltd 42

Life Coaching Services

Glynis Kozma Coaching 27

Music and Entertainment

Greensands Community Choir 24
Susan York Music Tuition 36

Nursery Schools

Clophill PreSchool 29
Clophill St Mary's C of E 29
Lower School and Nursery 21
Clophill Toddler Group 21
Wrest Park Day Nursery - Silsoe 43

Pet Services

Conifer Kennels & Cattery 42
For Paws (Dog Training) 28
Sealawn Boarding Cattery 30
The Hearn Hotel for Dogs 28

Plumbing & Drainage Services

Beta Plumbing 37
Chapman & Kirby Heating 38
Drain Doctor BC

Post Offices

Mace Post Office & Stores 31

Print Services

Amphill Print Centre IFC

Public Houses

The Stone Jug 21

Removals & Storage

Stephens 45

Repair Services

Tim Downing Repair Services 36

Security Services

Maximum Security Systems 43

Take-aways

The Happy Plaiice 31

Tuition Services

Rincon Tuition (Spanish & Maths) 47

Village Hall

Clophill Village Hall 47

Windows/Replacement

Andrew Baker Windows 44
AW Windows 30
Misty Double Glazing 27

IFC = Inside Front Cover IBC = Inside Back Cover BC = Back Cover

Ads from as little as £50 per year

For further information about advertising in Spotlight,
please contact our Advertising Manager at ads@clophillspotlight.co.uk

The Tanning Station & Pebbles Beauty

- Sunbeds
- Massage
- Eyelash Extensions
- Bio Sculpture
- Pedicure
- Spray Tans
- Footcare Specialist
- LVL
- Facials
- HD Brows
- LCN Nail Extensions
- Manicure
- Hot Stone massage
- Waxing
- Jessica GELeration
- Threading



2 Steppingley Road, Flitwick, Bedfordshire MK45 1AJ
01525 720 095 www.tanningstation.co.uk



Opening Times

Monday - Tuesday	09.00 - 19.00
Wednesday - Thursday	09.00 - 21.00
Friday	09.00 - 19.00
Saturday	10.00 - 16.00
Sundays & Bank Holidays	CLOSED

merry maids

Relax. It's Done.®



Come home to a job well done.



Whatever your idea is of time well spent, we're pretty sure it doesn't include dusting, vacuuming or scrubbing floors. That's our job. Merry Maids home cleaning services gives you back the time you want to concentrate on the things that you enjoy.



- Domestic cleaning service for your home
- Customised to meet your needs
- Regular or one off cleans
- Trained & uniformed teams
- Full insurance
- Satisfaction guaranteed

Call Merry Maids on 01525 860957
 for a free no obligation quote.
bedford@merrymaids.org.uk

merry maids.co.uk



DrainDoctor®

PLUMBING & DRAINAGE

24 Hours a day... 7 Days a week... 365 Days a year

Your Local Expert Plumbing & Drainage Service

**BEDFORD
& KEMPSTON**

01234 742 900

**LEIGHTON
BUZZARD**

01525 779 818



**BLETCHLEY &
MILTON KEYNES**

01908 849 814

**SANDY &
BIGGLESWADE**

01767 662 040

**FLITWICK
& AMPHILL**

01525 779 818

- All Emergency Plumbing
- All Drainage & Blockages
- No Call Out Charge
- Pre-fixed Prices
- Work Guaranteed

FREEPHONE ALL AREAS

0800 019 2416

T.C. COOMBER



**MOT'S CLASS 4/7
SERVICING & REPAIRS
CAR & COMMERCIAL
TYRES & EXHAUSTS
AIR CONDITIONING
DIAGNOSTIC CODE READING**

AMPTHILL

01525 406330

**Collection
& Delivery**
SERVICE AVAILABLE
Please ask

UNIT F, AMPTHILL INDUSTRIAL ESTATE, STATION RD, AMPTHILL, MK45 2QY