

Vol 40 | No.2

FREE

CLOPHILL SPOTLIGHT

MARCH 2018



**LOVE YOUR
LOCAL NEWS**

AMPTHILL PRINT CENTRE

DIGITAL PRINTING
DESIGN & MARKETING
DIRECT MAIL

and much more...

...and we're right on your doorstep at

Unit 24 Station Road Ind Est, Ampthill, MK45 2QY
(Just off the A507 Ampthill bypass, past the Post Office)

WE PRINT...

- Stationery
- Newsletters
- Menus & Tent cards
- Brochures
- Flyers & Leaflets
- Catalogues
- Books & Booklets
- Direct mail
- Training Manuals
- Banners & Posters
- Greeting cards
- Calendars
- Labels & Stickers
- NCR pads
- Folders
- Exhibition panels
- CD/DVD duplication
- Photocopying

3 DAY STANDARD SERVICE | SAME DAY AVAILABLE

www.fidelityprint.co.uk

Get a quote 01525 300001 quotes@fidelityprint.co.uk

fidelity[®]

Unit 24 Station Rd Ind Est, Ampthill



D. Andrews
P. Fleckney

MOTORS LTD

Tel: (01525) 860292

Tel: (01525) 404919

208 Clophill Road, Maulden, Bedfordshire MK45 2AF
89 Oliver Street, Ampthill, Bedfordshire MK45 2SA

**CAR AND COMMERCIAL VEHICLES
ALSO CLASSIC & AMERICAN CARS
SERVICING – REPAIRS – BREAKDOWN
SPRAYING – M.O.T.**



Stuart Benson Building Projects

Design, Build and Maintenance including Interior Refurbishments,
Kitchen / Bathroom fitting, Tiling, Flooring, Skirting boards, Doors
Garage conversions. Exterior Decking, Patios, Driveways
Garden Offices/ Sheds

Tel: 07946 579862 or 01525 403083

Email: benson.stuart@googlemail.com



A word from the Editor...

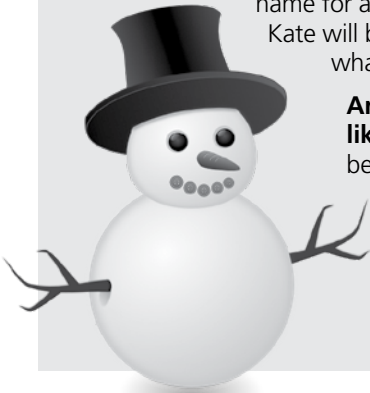
Hello, hello...

Brrrrr! Well I'm not impressed with the spring weather. As I write this, the snow is falling heavily outside...let's hope that by the time Spotlight arrives on your doorstep it will be an altogether spring-ier state of affairs.

I do have some warming news, though. We've got a **lovely new gardening columnist joining us** – so welcome to Kate Gardner (rather an appropriate name for a gardening enthusiast, don't you think?). Each month Kate will be dispensing advice and tips on all things gardening, whatever the size or shape of your plot.

Anyone else have a passion or hobby they'd like to share with Spotlight readers? It would be great to hear from you!

See you around in April. x



The magazine staff

EDITOR/ADVERTISING MANAGER	Helen Gent editorial@clophillspotlight.co.uk ads@clophillspotlight.co.uk	864836
DESIGN MANAGER	Chris Abrahams cmabrahams@yahoo.co.uk	
DISTRIBUTION MANAGER	Pete Liddle	860113
TREASURER	Richard Pearson	861110
COPY DEADLINE	20th of the month	

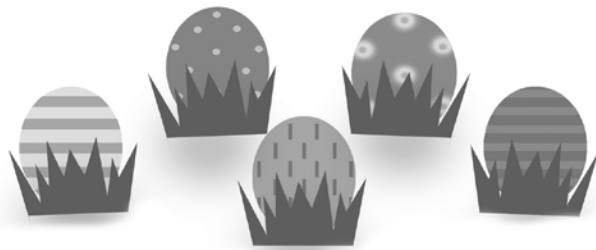
You can also read Spotlight online
www.clophillspotlight.co.uk

Clophill Preschool 

EASTER EGG HUNT & FAYRE

**Saturday 31st March
2pm - 4pm**

**INDOOR AND OUTDOOR FAYRE
WITH STALLS, CRAFTS AND REFRESHMENTS
LOTS OF ACTIVITIES FOR CHILDREN;
BOUNCY CASTLE, FACE PAINTING, TOMBOLA, CRAFTS AND GAMES**



www.clophillpreschool.co.uk

Clophill Village Hall, Kiln Lane, Clophill MK45 4DA



CLOPHILL METHODIST CHURCH

BEETLE DRIVE

Saturday 24th March 2018

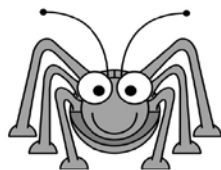
6.30pm

Adults £5 Children £2.50

Refreshments



In aid of
Clophill Methodist Church
Tel: 01525 860695



Clophill Preschool News

Hi everyone. Despite the weather, we've still been up to all sorts and even did our usual Fire Drill practice out in the cold! The children were brilliant as usual and went sensibly outside, holding each other's hands and were able to tell us what number to call in an emergency.

We celebrated **Chinese New Year** by painting real (dead) fish and making lucky red fish prints. The children were fascinated by the feel of their scales and how soft their bodies were... if a little smelly by day four! We've had Josh up in his tractor, with the children asking lots of good questions about it and having a go at sitting in the seat. Our friend Lisa also came in with her baby quails in their incubator. The children were fascinated by how tiny they were and got to hold some of their unhatched eggs as well as the shells.



During our **Box Week**, cardboard boxes of all shapes and sizes were brought into preschool and turned into houses, beauty parlours, offices and rockets – the children's imaginations really ran wild.

A huge thank you to everyone who kindly donated unwanted clothes, bedding and shoes – we raised a record-breaking £430 towards our fundraising total. We are continuing to collect for our collection on 20th June.

Our celebration of **World Book Day** was great fun as the children came in character costumes throughout the week and brought in their favourite books to share. And it was great to have Susan the Storyteller back with us, inspiring the children with her stories. We've had Clophill and District Flower Club joining us to make beautiful creations for Mother's Day and the club will also be running an Easter flower arranging session for grown-ups here later this month. Do contact us for details – everyone is welcome and little ones can join in Preschool. You can also book with us for a CPR and defibrillator training session run by Carrie Hollick on 28th March, price £5 per person.



Our **Egg Hunt and Fayre** is coming up on Saturday 31st March and we have a couple of tables left to rent if you're interested. Before the Egg Hunt we'll be holding an online auction with host Jumble Bee. Up for auction will be a painting of a local beauty spot plus tickets and vouchers for local events and attractions.

We hope the weather starts to warm up soon as we've been out in the allotment digging it over, planting our seeds and covering it with fleece. Our next Preschool Play session for Clophill Toddler Group will also be on the allotment. It's been fun letting the toddlers explore our outdoor shelter – the next one in May should be warm but definitely muddy. The Friday Group have been enjoying fresh popcorn and hot chocolate on their chilly Fridays, as well as chasing kites, exploring dead mice, making mud pools, going on walks and keeping the birds well fed. We'll let you know how they get on in the snow!

- Contact Imogen on **07765 887868** or Chris on **07936 006381** or email clohillpreschool@gmail.com. Our website is www.clohillpreschool.co.uk



An Afternoon "In Concert"
with the
Vauxhall Male Voice Choir



++ PLUS ++
Special Guest Artiste

Gemma Palmer (Clarinet)



Tickets
£8.00
Children
(Under 12)
FREE

Parkside Hall

Woburn Street, Amptill, MK45 2HX

Saturday 17 March 2018

2:30pm (doors open 2:00pm)

Refreshments available during interval

*Tickets available from Ken Jones 01525-753110 or
Brian Matthews 01525-841077 or on the door*

Choir Website: www.vmvc.org

St Mary the Virgin Church, Clophill

Lent Lunches

14th March

Clophill Methodist Church

21st March

St Mary's Church

Noon-2pm

Everyone very welcome

Raffle Bring and Buy

**Donations will be given to Crisis, a charity that supports the homeless and
helps young people to find a future**

For information phone Gill Jones 01525 861058

Please call if you require transport

News from Clophill Heritage Trust

Events & activities

In February we held our first Art Day which was enjoyed by everyone. We'll have more of these later in the year, along with a wide range of events and activities including outdoor theatre, countryside craft days and animal experiences. Coming up this month we have Mother's Day Cream Teas, Planting Day and Sunday Teas. For further information and to book go to www.clophillecolodges.org.uk/events



Geology wall

This year the wall in between the old church and the cemetery will be repaired and to ensure the wall uses authentic materials we need local greensand stone. If you have any unused stones lying around in your garden that you're able to donate to us, please contact Kayleigh or Emily on **07935 911207** or email info@clophillheritage.org

To complete the wall, we're launching a poetry competition for local students. We're looking for poems of up to 30 words about Greensand Country – the winner will have their poem carved on the new wall. Email your entries to info@clophillheritage.org or post them to Poetry Competition, Clophill Eco Lodges, Old Church Path, Clophill MK45 4BP. Competition closes on May 31st.

Volunteers/Duke of Edinburgh Award

Do remember if anyone is completing their Duke of Edinburgh Award and looking for a place to complete their voluntary service, they can do so up at The Eco Lodges. Contact Kayleigh Waight or Emily Hakansson on **07935 911207**.

To book an event online, go to <http://clophillecolodges.org.uk/events> or for a Tower Tour <http://clophillecolodges.org.uk/book-a-tower-tour>

Clophill P3 and Friends



On a sunny Saturday in February, a group of volunteers returned to the recreation ground to resume scrub clearance. Although there's still more to do, the vegetation in the north-west corner has been cut back, opening up much of the bank for hedge-laying. We had another splendid fire but we all forgot to take the marshmallows. Again! The picture shows the hardy band of workers (who all complained about the sun in their eyes for this photo!). By the time you read this the hedge at The Green should also have had a haircut ready for the summer season.

- If you'd like to volunteer for future project please contact me on janebreed@hotmail.com or **01525 860834**



St Mary's School News

In February the children from Chestnut to Oak attended our annual Candlemass Service in Church. The staff were incredibly proud of their behaviour as well as the good work of the children who read the Bible passage and prayers.

The Governors enjoyed their time in classes for their half-termly Governor Day. The Governors shared their experience with parents, writing:

“ *We always enjoy spending time in the classrooms; it's a huge privilege to have that "fly on the wall" experience and see just how happy and engaged our children are. It's also great to be able to speak to the children and hear about how well they're getting on and how challenged they feel by the work they're doing. Gathering this valuable information really helps us ensure that St Mary's is delivering the right learning experience for all pupils.*

It was especially interesting to be in the classroom on 'Internet Safety Day' when each class took part in age-appropriate activities and discussion around the topic. We also attended worship and were treated to a presentation by the sports leaders who have been extremely busy organising fun sporty activities for lunch playtime. The enthusiasm of those involved was overflowing!

As part of the Governor Day we had meetings where we do the business bit! Highlights include extremely positive outcomes from recent visits by both the Deputy Director of Education and the Deputy Diocesan Director of Education, both of whom were impressed by what they saw.

Finally, there was just time for us to have another fantastic experience with the whole school who came together for a presentation on 'Christianity around the World'. Each class had prepared a poster highlighting the similarities and differences in Christian Worship in countries such as Rwanda and the Philippines. The posters will be on display in the hall. Do pop in and see them! ”

The School Council encouraged the school to come dressed in bright clothing to support the **'Shine Bright, Wear Bright'** campaign. This is run by the charity CHUMS as part of Children's Mental Health Week. Children were also invited to bring in their teddies, which were dressed up, too. Thank you to the school council for organising this.

We have lots planned for half term, including our popular Lent Appeal Day which will once again involve outside and inside games. This year we're supporting Keech Cottage, which is a local children's hospice.

Our value for March is *Love*

We'll explore the real meaning of love and how you should show love for others by caring, respect and kindness. The children will be encouraged to demonstrate love through kind words and deeds and plenty of smiles. Mothering Sunday is in March and we'll be considering our mothers, their love for us and ours for them. Our message will be that from a feeling of love comes happiness.

Finally, we've now launched our **school Facebook page** www.facebook.com/clophillstmarysschool



Acorn Nursery News

The children have been enjoying doing each other's (and the staff's) hair in the hairdressers, learning to be gentle and how to tie ribbons onto the hair. We've also introduced new bells on the investigation shelf and the children are learning about high and low notes and about rhythm when we play them. We've been making pictures using shapes on the SMARTboard and on paper and have done lots of colour play, getting the children to find items of a certain colour around the nursery.



Some children were able to enjoy the slight dusting of snow we had last month, searching around the garden for snow to make mini snowmen and snow balls to throw at each other. We also made footprints in the snow with our wellies and looked at the patterns and shapes we'd made.

St Mary's Church News



Saturday January 27th was a busy day! In the morning, our Coffee and Cake session **raised over £300 for Janina**, the girl we support in Paraguay. Then in the afternoon a party of 20, including children from the Christmas choir plus some parents and siblings, enjoyed the pantomime, Snow White, in Flitwick.

The Lent Lunches for Crisis have made an excellent start. They are on every Wednesday throughout Lent up until Holy Week. All welcome.

On Sunday 1st April there will be an Easter Sunday Sunrise Service at 7.30am at St Mary's Old Church, followed by a bacon roll breakfast in the Eco-lodges. Tower Tours will be available after the service.



Bedfordshire
Cambridgeshire
Northamptonshire

Wildlife walks & talks



The Work of the Woodland Trust

Monday 19th March, 7.45pm, Maulden Church Hall

UK woodland supports more rare and threatened species than any other habitat. The Woodland Trust's work to protect and enhance woods and trees will be the theme of this talk by Paddy Byrne. £2 per adult.

Open to all, no booking required

For additional information and to reserve places email flitvale.info@gmail.com or ring Ann on 07890 347327 after 6pm or at weekends

WARDEN ABBEY

The community vineyard

A Bedfordshire Rural Communities Charity project

2018



Vineyard Tours & Tastings

Adults £10

Children welcome free

***Advance
booking only***

See website for details
times & booking

MAY	Sat 26 th	
JUNE	Sat 23 rd	Tues 26 th
JULY	Tues 10 th	Sat 21 st
AUG	Tues 7 th	Sat 25 th
SEPT	Fri 21 st	Sat 29 th

Walk in Monks' Footsteps

29th June, 10th July and 7th Aug

OPEN DAY Sunday 9th Sept 11am-4pm

Wine sales, tours, local stalls, BBQ, refreshments.

www.wardenvineyard.org.uk



Come into the Garden

with *Kate Gardner*

In gardening terms, March is the beginning of the 'busy season' with the increase in day length triggering lawns, plants and weeds to start growing. Here in Clophill the free-draining, sandy soil that is typical of the Greensand Country area in which we live warms up much faster than the heavier clay found just up the road in Barton or Bedford and provides the perfect conditions for **early weeds**. Spotting them and getting them out before they have a chance to make seeds is key.



Once the area is cleared apply a 5cm deep mulch (that's a couple of inches in old money) of either garden compost or well-rotted horse manure to the soil. No need to dig it in, just leave it on the surface and the worms will do all the hard work for you. Not only does this help to keep the weeds under control but adding organic matter to our sandy soil improves both the beneficial bacteria and the water-holding capacity of the soil. The result? **Healthier plants** that are better able to withstand periods of low rainfall and a greater diversity of beneficial bacteria, fungi, worms and insects that are essential for improving the overall health of the garden.

March is typically when many of us start to **cut back the dry seed heads** from last year's perennials. Seed heads are used by ladybirds and other insects as places to hibernate, but now is the time to cut away these old stems and let the new green shoots grow. Mulching around these plants will help protect from late frost and provide a much-needed nutrient boost for the plants, too.

For those of you who've visited my garden at Dragons Glen you'll know that I use lots of different containers on the decking around the house. March is when I start to work my way through them all, pulling out any weeds, cutting back and generally checking the health of all the plants. The **Japanese acers and evergreen shrubs** live in pots all year around so I trim about 2 or 3 cms of roots and soil from all around the root ball (not as drastic as it sounds – think of it as giving the plant an annual haircut), and then repot using fresh compost with a granular slow-release fertiliser mixed in. Remember to give it a good water to settle the soil around the roots. Trimming the older, thicker roots encourages the plant to put out lots of new fibrous roots which helps it to take up the water and nutrients from the compost and grow healthy new leaves and flowers

Container gardening allows you to change the design, colour and style of planting, and one of the pleasures is visiting independent plant nurseries and local garden centres to gain ideas and inspiration. However, be aware that some of the plants that you may be tempted to buy may not be fully frost hardy so it's worth having some horticultural fleece to hand to give them some additional protection if late frosts are forecast.

- *Next month I'll look at all things pruning related – why pruning matters, what to prune and when. In the meantime, enjoy your garden.*

Your letters...

I'd like to inform everyone that **Clophill Tuesday Club**, which was held at Beverley Court, has now closed after 45 years. I'd like to thank everyone who has attended and been on holidays and outings with us. In addition, I'd like to thank the other groups and the people in the village who've supported us – without your help we wouldn't have kept going for so long!

Thank you all for the happy memories.

Betty Hampson, MBE

Remembering Clophill's Fallen

Continuing our series of the centenary of Clophill's brave men who lost their lives in the First World war...

The New Year had begun well for the village, with no reported fatalities since October 1917. Unfortunately all was to change in March 1918. Cecil Roberts died, aged 29, on the 23rd, John Wilden died of wounds on the 24th, aged 24, and Ernest Herbert also died of wounds, aged 23, on the 31st. All three were born in Clophill and died in France. They are commemorated in three different cemeteries, all within 50 miles of Arras.

Cecil Roberts, a farm labourer, was born in Clophill, as was his wife Hannah. They lived in Back Street and had five children. His parents were Caleb and Sarah. Caleb had lived with his family in Back Street until his death in 1898. Sarah was living at 2 Mill Lane with two of Cecil's brothers in 1911; in 1901 they'd lived at 4 Bedford Cottages, Jacques Lane. They had 13 children. Cecil joined the Bedfordshire Territorial Force in 1914, was transferred to the Northants & then the 10th Essex Regiment, which landed at Boulogne in 1915. A year later they were in action on The Somme. In 1917 they saw much action before moving to Flanders and then the Second Battle of Passchendaele.



In March 1918 they fought in The Battle of St Quentin. On the 23rd all available troops were rallied but were unable to stop the German infantry from making a 40-mile breach in the British line. It was said at the time that the sun didn't rise for two days due to the fog, gas, and gun smoke. A street in the local area has been named after the Essex Regiment. Cecil is commemorated on the Poziers Memorial.

John Wilden was born in 1895. His parents, Frederick and Sarah, were to lose two sons to the war. The family lived at 7 The Green and John and his father were domestic gardeners. In 1914 John married Alice Aldwinckle in the district of Kettering. At the time of his death they had a daughter called Vera.

John enlisted with the Bedfordshires and was transferred to the 12th Battalion of the Suffolk Regiment. The battalion landed in France in June 1916 and remained on the Western Front for the duration of the war. The 12th also fought in the Battle of St Quentin in March 1918. At this battle, 177,739 men of Britain and the Commonwealth were listed as either killed, wounded or missing.



John was injured on the day of their retreat under heavy enemy shelling.

Ampthill News reported:- 'We regret to record the death from wounds of Pte. John Wilden, Suffolk Regiment. News came that he had been wounded on March 24th, and later his wife received a telegram stating that he had died the same day. He was a fine manly fellow of a most cheerful disposition, and was beloved by all who knew him. Much sympathy is felt for his widow and little child, and also for his parents.'

He is commemorated at the Bac-du-Sud British Cemetery.

Ernest Herbert lived at 11 The Strand in 1911 with his mother, Elizabeth, and father, George, a woodman working on an estate. Ernest was a shepherd. His parents had already lost two sons, both in the British Army – John in India in 1906 and William in Bermuda in 1911. At the time of the Census there were four adults and four children living with Ernest in The Strand.



Ernest joined the Bedfordshires and in November 1916 was sent to the Western Front with the 6th Battalion Leicestershire Regiment. He was involved with numerous engagements until he was taken prisoner, near Cambrai; he died whilst in captivity. His parents weren't informed of his death for several months.

The Leicestershire Regimental website states:-
'In the last desperate attacks by the German armies launched in the spring of 1918, the "Tigers" fought with unsurpassed heroism. The sterling courage of the 110th Brigade (which included the 6th Battalion) in the defence of Epehy in March 1918 was a fine example of British grit. Only at one point did the enemy succeed in piercing the line, defended to the last man by the party of Leicester men who held it.'

He is commemorated at Le Cateau Cemetery.



St Mary's Church, Clophill

Traditional Church Fete and Village Event

Saturday 12th May, noon-4pm

The aim of our annual fete is to put together a local event for the enjoyment of all ages and to involve as many organisations and individuals as possible. We want to provide the opportunity for all to promote their organisation and to raise money for their own cause.

This year we're planning to extend the attractions to entertain the children and inform the grown-ups. We hope everyone will support this popular event.

If you'd like to help on the day please contact us. We need help with setting up and clearing away, running stalls, sideshows and refreshments.

Gill Jones Carolyn Cranswick

For further information phone 01525 861058

www.stmaryschurchclophill.org

Christine's quick 'n' easy recipe



Ligurian Easter Pie

INGREDIENTS Serves 6-8 people

- 2 packets puff pastry
- 1 kg of Swiss Chard or fresh spinach
- 500g ricotta cheese
- 6 free range eggs
- ½ medium onion
- 2 tbsp grated Parmesan cheese
- ½ tsp dried marjoram
- 1 tbsp extra virgin olive oil
- small knob of butter
- salt and freshly ground pepper

1. Bring a large pan of salted water to the boil then blanch the spinach or chard (remove tough stalks first) for 3 minutes. Drain and allow to cool.
2. Finely chop the onion and gently fry in the olive oil until soft but now browned.
3. Squeeze any excess water out of the chard/spinach and add to the onions along with the marjoram and black pepper, allowing the flavours to blend.
4. Leave the mixture to cool and pre-heat oven to 180°.
5. Butter and flour a deep flan tin and line with one of the puff pastry sheets allowing it to overlap a little.
6. Add the ricotta cheese and grated Parmesan to the chard/spinach mixture and mix well.
7. Fill the flan with the vegetable mixture.
8. Make five indentations in the mixture and fill with the raw shelled eggs.
9. Top with the other sheet of puff pastry, ensuring the edges are well sealed, then brush the top with egg wash.
10. Bake in the oven for about 1 hour until golden brown.
11. When cool enough to handle remove from the tin.



The pie can be served warm from the oven or you can make it the day before & serve cold.

AGM followed by talks from Society Members **Monday 9th April, 7.30pm for 7.45pm**

A short AGM followed by updates of work carried out during the year.

Visitors are very welcome.

Lecture Theatre, Flitwick Library MK45 1QJ

£2 for members and £3 for visitors, payable on the door.

For further details contact Clive Makin on 01582 655785

www.adalhs.org.uk

Amphill & District Archaeological & Local History Society



Clophill & District Flower Club



February isn't the cheeriest month in the year for most people, but our club members had something cheery to look forward to as our programme for 2018 began with Lesley Sturdy's wonderful **'Ways with Wood'** demonstration.

Lesley – a demonstrator, judge, speaker, teacher and, more importantly, a member of our club – had obviously carried out much 'behind the scenes' preparation because all her materials were in pristine condition. And, as we learned during the evening, she'd created several additional arrangements to compliment those that were demonstrated on stage.

Six different uses of wood were shown, each one accompanied by superb flowers and foliage. For the first design, birch branches were cleverly entwined along an oblong metal stand, allowing two arrangements to be displayed – one at each end. Wooden crates of differing sizes supported the next two arrangements, and another display had Lesley lowering an openwork tower of twisted twigs through an upright design.

After our tea break, memories of fun time on water were depicted with a wooden boat-shaped container, followed by a design for a wedding. Where is the wood you ask? A complete tree trunk then appeared with a similar design to that which Lesley had just created, adorning the top. Her three-tier finale used square wooden frames, all filled with a lattice-work of twigs.

During the evening, Lesley gave us plenty of tips on conditioning flowers (particularly roses that droop) and flowers with hollow stems. Come along to our club and you'll pick up lots of great tips, too! *Joan Palmer, Club Secretary*

- For information on upcoming demonstrations, go to www.clophillflowerclub.com



Parish Registers for January & February

1818

Marriages

Mar 26 William Carter (Meppershall)
to Ann Field

Burials

Mar 2 John ?, son of William and Mary
Mar 12 Ann Hare wife of George
Mar 18 Susannah Burrows

1868

Baptisms

Mar John Mann
Ann Elizabeth Cunnington
William Cunnington
Susan Lomas
Emma Billington
Mar 24 Isaac Charles Lincoln

Marriages

Mar 20 Leonard Hall to Sarah Askham

1918

Baptisms

Mar 6 Eric Richard Edward Simpson

Burials

Mar 2 Gladys Irene Cooper, 7 weeks

1968

Burials

Mar 9 Arthur William Pitts, 63

CHURCH REGISTERS FOR JAN/FEB 2018

Funerals

January 25th at the Methodist Church
Doris Ruby Pitts, 101

February 6th at St. Mary's
Iris Elizabeth Kate Gammons, 90

These notes are a resume only. Official minutes are available on the internet and notice boards. All official correspondence should be sent to the parish clerk and not individual councillors.

It was a well attended February meeting in the Methodist Church, with plenty of positive outcomes and talking points.

Last month Clophill Parish Council considered the Precept for the financial year 2018/19. The precept is the amount of money Central Beds allocates from council taxation to the parish in order to pay for local services delivered to Clophill residents by Clophill Parish Council. This includes paying for maintenance of:-

- Land and allotments
- play areas and the recreation ground
- street lighting
- litter (and dog waste) bins
- salt bins
- the bus shelter
- implementation of the Neighbourhood Plan
- employment of a full-time Clerk who makes most of this happen

It also includes any money we allocate to projects we've identified and voted to implement. We have:-

- doubled spending on the recreation ground to improve the surface and significantly reduce the destructive rabbit population
- installed a new gate to the rec with level access from the road making it accessible to everyone
- sourced and installed new play equipment and benches

Projects we've committed to deliver include:

- supporting and making provision for Grant Aid applications from local organisations
- rural match funding projects
- improving parking and pedestrian access around the Green
- installing traffic speed sensors to reduce speeding through the village
- widening the footpaths
- buying and installing a youth shelter
- buying and installing outdoor gym equipment
- ensuring we have a suitable Christmas tree at the Green

We hope by way of making this statement, the Parish Council is able to clearly demonstrate that its decision of an increase in the precept is supported and justifiable.

The 8.91% increase this year (the equivalent increase of £1.09 per year per household) comes on the back of a 26.9% increase in 2013, a 16% reduction in 2014, no movement in 2015 and 2016 then a 7.9% increase last year. That's an average increase of 3.8% over 5 years. So to a large extent we are playing catch-up to meet our expenses and then delivering the projects described.

Clophill Parish Council

Continued

Applications for Grant Aid

We had five applications to our Grant Aid to consider – from the football club, the pre-school, our local Scouts, the Church for their roof fund and the Citizens Advice Bureau. A sub-group has now been tasked with deciding how to allocate funding to these applications. For more information about our Grant Aid policy, visit www.clophill-pc.gov.uk and click on the documents section.

Anglian Water

The road works from Anglian Water are scheduled to be ongoing until the summer. Thanks for your patience at this time – we truly understand the effect of the road closures on villagers. You can view up-to-date information at www.clophill-pc.gov.uk. Anglian Water has a very responsive social media team, so if you have any feedback or questions go to <https://m.facebook.com/AnglianWater> You can also track what's happening at www.anglianwater.co.uk/youarea

Parish Council vacancy

There's still a vacancy at Clophill Parish Council. If you think you can help, we'd love to hear from you. For more details and a brief application form please contact the Clerk to the Council, James Stirling, on clerk@clophill-pc.gov.uk or write to him at 31 Plum Tree Road, Lower Stondon SG16 6NE. You can also view information on the Parish website www.clophill-pc.gov.uk

Planning

CB/18/00433/FULL

Location: The Green Man, The Green

Proposal: Erection of new dwelling and conversion of existing listed building into three residential apartments (also CB/18/00434/LB). We feel that this is overdevelopment of a small site. The re-development will have an overbearing aspect on the street scene and will be out of context to the surrounding buildings. There's no certainty that the public footpath and access to the site at the rear can be assured.

OBJECT

CB/18/00361/FULL

Location: The Old Kindergarten, 3 Great Lane

Proposal: Replace hedge along Great Lane with a 3ft high brick wall with a 2ft 4in rose trellis on top.

SUPPORT

CB/18/00478/FULL

Location: 10 Bedford Road

Proposal: Single-storey rear extension

SUPPORT

CB/18/00381/FULL

Location: 1 Tanqueray Avenue

Proposal: Single-storey rear and side extensions. Our primary concern is Highway safety at this location. This is right in the corner of the close and the side extension would remove one car parking space. There is potential to cause on-street parking obstructions.

OBJECT

Clophill Parish Council

Continued

CB/18/00119/NMA

Location: Land adjacent to 15 Jacques Lane
Proposal: Non Material Amendment for second-floor bedroom roof light re-positioned to Plots 1 & 3 on planning application CB/16/04854/FULL

NO COMMENT

CB/18/00131/VOC

Location: Land adjacent to 15 Jacques Lane
Proposal: Variation of Condition 2: Planning permission CB/16/04854/FULL Erection of three dwellings. Reduced levels to ensure compliance of the building regulations – Part M. We objected to this development in that it's out of character for the locality and the changes the developers have made themselves has further degraded the development.

OBJECT

CB/17/06054/VOC

Location: 118B High Street
Proposal: Variation of CB/17/002993/FULL. Changes of layout and rooms in loft spaces. The proposed changes would provide an overlooking view point and would cause harm to the amenity and living conditions of occupiers of any neighbouring dwelling.

OBJECT

CB/18/00089/FULL

Location: 15 The Causeway
Proposal: Part two-storey and part single-storey rear extension, garage conversion and front porch.

SUPPORT

The next Parish Council meeting will take place at the VILLAGE HALL
at 7.45pm on Tuesday 27th March

Telephone
**01525
860526**

The Stone Jug

A Free House
BACK STREET, CLOPHILL

We're a traditional village pub, offering home-cooked lunches that will fill your bellies without emptying your wallet!

Make 'The Jug' part of your weekly routine – for lunch, a catch-up with friends over a drink or perching at the bar chewing the fat and putting the world to rights.

As my late dad used to say 'We're a proper pub for proper people.' Cheers!

- 5 real ales, including 3 guest pumps
- selection of wines and Prosecco by the glass (or even better, by the bottle!)
- home-cooked lunches Tues-Sat, 12-2pm



REMEMBER OUR MOTTO
"A VISIT TO THE JUG IS BETTER THAN GOING TO A PUB"
CHEERS JOYCE & VIKKI

www.stonejug.co.uk

www.facebook.com/thestonejugclophill

What's on in and around Clophill



17

Saturday 17th

Vauxhall Male Voice Choir 2.30pm, Parkside Hall, Ampthill
See *this issue* for ticket information

24

Saturday 24th

Beetle Drive 6.30pm, Clophill Methodist Church
See *this issue* for full information



12

Saturday 12th

Clophill Fete Noon-4pm, St Mary's Church

On throughout the month...

One Saturday a month...

- **Messy Church** 4pm-6pm, Clophill Methodist Church. Dates: 17 Mar; 14 Apr; 19 May; 16 Jun; 14 Jul; 15 Sep; 20 Oct; 17 Nov; 15 Dec.
See 'Village Groups' for contact details.

CHURCH SERVICES

Regular services at St Mary's Church, Clophill

1st Sunday	8am, Holy Communion; 10.45am, Family Praise
2nd & 4th Sundays	10.45am, Parish Communion
3rd Sunday	10.45am, Morning Prayer/Praise
5th Sunday	10am, Benefice Services

Regular services at Clophill Methodist Church

1st, 2nd, 4th, 5th Sundays	10.30am Morning Service
3rd Sunday	10.30am All Age Worship Service

If you have any diary dates that you would like included on this page, please email clohillspotlight1@hotmail.co.uk

Village groups

Beverley Court	860920
Brownies	https://enquiryym.girlguiding.org.uk
Clophill Community Care	Duty Contact 07791 773705
Clophill Heritage Trust	Ali Bradbury 07894 710001
Clophill St Mary's C of E Lower School & Nursery	Sharon Kempson 860206
Clophill Toddler Group	Caroline Daniels 07734 495348
Clophill United Charities	Gillian Hill 860539
Conservation Group	Brian Adams 862297
Flower Club	Gillian Hill 860539
Friends of the Cheshire Home	Sue Pearson 861110
Funzone After School Club	07903 167493
Greensands Community Choir	Luke Howard 07975 520085
Indoor Carpet Bowls	Tony Meredith 860754
Messy Church	Victoria Higgins 07920 568861
St Mary's PTA	victoriajhiggins@hotmail.co.uk
Scouts and Cubs	Julia Skelton 07774 993973
Tea and Chat	www.scouts.org.uk/get-involved
Village Hall Booking Secretary	Anita Errick 860695
	Marilyn Browning 07821 643936

Useful numbers

Gas (Emergency)		0800 111999
Electricity (Emergency)		0800 7838838
Emergency Fire/Police/Ambulance		999
Water/Sewage (Anglian Water)		0845 7145145
Telephone	(Customer Services) 150 (Faults)	151
Highways Department (Central Bedfordshire Council)		0300 3008049
Benefits Agency (Bedford office)		01234 361500
Registrar's Office (Births/deaths/marriages)		0300 3008089
Rail (Enquiries)		0845 7484950
Buses 01234 262151	(Link A Ride) 01525 840511 (Flittabus)	01582 406561
Luton Airport		01582 405100
Swimming	(Flitwick) 01525 717744 (Robinson Pool)	01234 212479

LOCAL GOVERNMENT

Central Beds Offices (Chicksands)		0300 300 8000
Mid-Beds MP	Nadine Dorries	01462 811992
Central Bedfordshire Councillors	Michael Blair	01525 404513
	Paul Duckett	07988 184061
Clophill Parish Council	Paul Downing	01525 860350
	(Clerk) James Stirling	01462 887226

HOSPITALS

Bedford (North & South)	01234 355122	Admissions	01234 261150
		Appointments	01234 359012
Luton & Dunstable			0845 1270127

DOCTOR'S CLINICS

Amphill	(Houghton Close) 01525 300898	(Oliver Street)	01525 631395
		(Greensands)	01525 631390
Shefford	Enquiries 01462 818620	Appointments	01462 810034
Barton 01582 528700		Flitwick	01525 715300

POLICE

County Police HQ		Non Emergency	101
Amphill Station			01234 841212
			101

CHURCHES

St Mary's Parish Church		Liz Henman	01525 860108
St Francis RC Church, Shefford		Ian Gordon	01525 860875
Clophill Methodist Church		Jim Davies	01525 860829
Baptist Churches (Amphill) Doreen Gibbs 01525 862424	(Maulden)	Ian Crawford	01525 634325
	(Shefford)	Hazel Arnold	01462 812564

SCHOOLS

Clophill St Mary's C of E Lower School & Nursery (Headteacher Mrs K Bingley)		01525 860206
Harlington Upper School , Harlington		01525 755100
Preschool clophillpreschool@gmail.com	(Chris) 07936 006381 or (Imogen)	07765 887868
Redborne Upper School , Amphill		01525 404462
Robert Bloomfield Middle School , Shefford		01462 628800



PETER SHARPE BUILDING SERVICES LTD

Call us first for **ALL** your building works
and get reliability, quality & sensible prices.

- Domestic extensions
- Design & build service
- General building works, drives, patios
- Carpentry, kitchen fitting, wall & floor tiling
- Laminate flooring & hardwood flooring
- Mini digger and driver hire
- Electrical installations including Building Regulation part P certification
- Roofing repairs carried out
- Conservatories, UPVC windows

'BEDFORDSHIRE'S PROFESSIONAL BUILDER'

01525 872762 / 07850 803021

email: psbsltd@btconnect.com

Stand out from the crowd

It can all start with your logo...an effective logo creates an expectation about the qualities of a product or service. Simply buying an off-the-shelf logo from the internet can be a false economy as it could actually cost you potential new customers.

I have over 20 years' experience as a graphic designer producing bespoke logos for businesses of all sizes, creating unique brands that make a company more memorable.

I also offer a range of graphic services, including brochure and leaflet design, web design, adverts, posters and pull-ups, exhibitions, vehicle livery, packaging and many more things besides.

I'd love the opportunity to discuss how I may be able to help your company stand out. **Feel free to get in touch.**



abrahams
CREATIVE

www.abrahamscreative.co.uk

*For further information, please contact Chris:

Telephone: +44 (0)7889 617950 Email: chris@abrahamscreative.co.uk

be inspired
CREATIVE SOLUTIONS FOR PRINT & WEB

Passionate about travel

Too busy with limited time to find the right holiday? **Qube Travel** is your lifeline in waiting. Whether you are looking for a Cruise, Group Holiday, Villa Holiday, Wedding Venue, Honeymoon or SPA retreat, we have access to over 200 suppliers.

- Local agency offering bespoke personalised travel services
 - Tailor-made and designed to meet your individual requirements
 - Personalised appointments at a convenient time to you
 - Over 30 years experience in the travel industry
 - Giftcards available for special occasions
- Weddings | Honeymoons | Birthdays

Qube
TRAVEL

qubetravel.co.uk

E jane@qubetravel.co.uk T 01525 306360 

Opening hours: Monday to Friday 10am - 6pm
and Saturday 10am - 4pm

ATOL protected. We act as an agent on behalf of The Global Travel Group Ltd in connection with the sale of travel products. Unless specified as the operator, The Global Travel Group Ltd is the agent on behalf of ATOL Protected Tour Operators and other principals. **Personalised giftcards for Weddings and Honeymoon couples** (small set up cost and min spend applies)



be hot!

with
Slimming World


TUESDAY

Silsoe

Silsoe Community Sports Centre
Chestnut Avenue, MK45 4GP
5:30pm & 7:30pm

Tel / Text: Liz for details
07973 532793

slimmingworld.co.uk

0344 897 8000   

Slimming
WORLD



- Reflexology
- Reflexology for fertility
- Pregnancy massage
 - Ear candling
 - Reiki healing
- Indian head massage

Treatments available in Clophill & Ampthill. Qualified and insured with nine years experience

For information and appointments call Lorraine on **07708 580308**



www.librawellness.co.uk



All types cleaned:



- Ovens
- Grills
- Ranges
- Hobs
- AGAs
- Microwaves
- BBQs
- Extractors

Fully insured, and DBS Police Checked

For a quote call Clive direct on: **07949 233089** or phone the Office on **0800 840 7127**



www.ovenclean.com



Ovenclean Clive Burgess

Painter and Decorator
Call Chris : 07950714579

do you want your home brightening up?

all interior & exterior work

no job too small!

free no obligation quote

25 years experience
& fully insured



facebook: @christopherthepainter
email: chris.minihane@btinternet.com

SAVAGE
ACCOUNTANTS

- Accountants who know how businesses run
- Qualified Chartered Accountant and Chartered Tax Advisor
- Friendly Accountants who listen to your needs
- A wide range of services offered

Call

01525 552250



for a FREE initial meeting

www.savageaccountants.co.uk

Company Registration Number: 09214570
Cure your tax headaches

Automotive Services

FOR ALL YOUR VEHICLE REQUIREMENTS

We are your one-stop shop...

- servicing from £50, including parts
 - MOT test - £25
- collection & delivery service
 - interest-free credit
 - nationwide warranty
- tyres fitted from £18 – largest stockist of tyres in Bedfordshire
 - free courtesy cars

Opening hours:

Mon-Friday, 8.30am-5.30pm; Sat, 9am-1pm

01234 216003

35 Brunel Road, Bedford MK41 9TJ

www.automotiveservicesbedford.co.uk



Hire Clophill Village Hall



Wedding Receptions

Birthdays & Special Occasions

Dances and Discos

Club & Community Meetings & Activities

Phone: 07821 643 936

Mail: Clophill.villagehall@gmail.com Web: www.clophillvillagehall.co.uk

CLOPHILL TODDLER GROUP

Understanding the importance of a child's play

LOTS OF TOYS, SPACE AND FRIENDS
FOR BABIES AND TODDLERS UNDER 3

FRIDAYS 10am – 11.30am at the Village Hall
See 'Village Groups' for contact details



Linda Allsop

PHYSIOTHERAPY



Chartered
Physiotherapist
with over 30 years
experience in both
the Private Sector
and the NHS.

01462 711978 | 07989 257026
www.linda-allsop-physio.co.uk

USING PARABEN & SULPHATE FREE, 100% VEGAN,
CRUELTY FREE PRODUCTS



A Cut Above Hairdressing

by Rachel

In the comfort of your own home
cutting & styling specialist

call or text : 07896009382
facebook: acutaboverachel

Salon experienced
Fully insured
Fully qualified to Level 3 Standard.

PERSONAL DOG WALKER

£10 per hour
£7 per half hour
£6 per visit

- First Aid Certified
- Insured



Text or call Corrane on

07576 473373 or 01525 630740

 Corrane's personal dog walking

SJ TAX & ACCOUNTING

QUALIFIED ACCOUNTANT

Professional friendly services,
Tax advice, Free initial consultation,
Sole trades, Ltd companies,
Bookkeeping, Payroll,
CIS, VAT & Tax

DOWNLOAD OUR FREE APP
"SJ TAX LTD"

contains lots of free tax info and
a free income and expenses tracker

e: sally@sjtax.co.uk

t: 01234 831997

m: 07899 808592

Glee
Greensand Community Choir
LOVE SINGING!
sing with an exciting local choir ...



Come along to your local **community choir**,
for men and women of all singing abilities!
Mondays, 8.00-9.30 pm at St. Mary's Church, Clophill.

- Come and sing with an exciting new local choir led by a professional musical director
- Uplifting music in a variety of styles: musicals, classic pop, folksongs, sacred and world music
- Welcoming singers of all abilities - no audition, no need to read music!
- New members - come along any time for a free taster

Enquiries to:
greensandcommunitychoir@gmail.com
or ring Luke on: **07975 520085**



Welcome to Clophill St Mary's C of E Lower School and Nursery

A small, friendly, Voluntary Aided Church of England Lower School, graded 'Outstanding' by Ofsted, with close links to the local community.

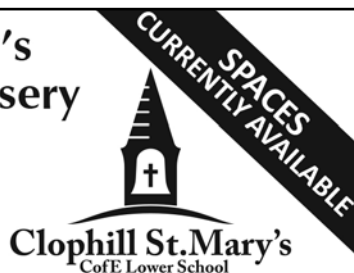
St. Mary's is a Values based school taking children aged from 2 years 7 months to 9 years and providing them with a framework for living, tightly woven into the positive Christian ethos of the school.

Breakfast and after school care for all ages.

Acorn Nursery

for preschool children aged 2 years 7 months to 4 years with breakfast and after school care available.

Providing 30 hours free childcare entitlement.



To arrange a visit, please call us 01525 860206
or email: generaladmin@nursery@clophillstmarysschool.co.uk
For more information visit: www.clophillstmarysschool.co.uk

We've got the space for you!

Introducing our quarter-page ad size – want one?

Contact our Advertising Manager at ads@clophillspotlight.co.uk



OPENING TIMES:

Mon	Closed
Tue	9.30-4pm
Wed	9.30-4pm
Thurs	9.30-7pm
Fri.	9.30-6pm
Sat	8.30-4pm

PRICES:

Men's cut.	£12
Clippers.	£10
Buzz cut.	£5
Restyle and fades.	£17
Beard trims.	£10
Childs cut.	£10 (under 6yrs)

We are adjacent to the newsagent. (from time to time there is a large green transit van parked in front of the barbers)

22 High Street, Silsoe MK45 4EP
07813145112

THE BLUECAT



LUXURY CATTERY

Tel: 01525 861416
www.thebluecat.net

Find us on Facebook @thebluecatcattery or email us at enquiries@thebluecat.net

The Bluecat is a luxury cattery set in the quiet area of Jacques Lane in Clophill. With just 14 cat chalets, we have time to fuss, pamper and play with your cat to its heart's content whilst in our care. Please call for further information.

Misty Double Glazing?

Over 30 Years experience. FREE Quotes

**KEEP YOUR WINDOW FRAMES...
... WE JUST REPLACE THE GLASS!**

- UPVC • Aluminium • Or Wood

Because we replace just the glass the repair is a **Fraction of the cost** of a complete replacement window.

BEFORE  **AFTER** 



mistydoubleglazing.co.uk
QUALITY GLAZING SERVICES
01525 876808

WE ALSO REPLACE BROKEN...

- Glass • Handles • Hinges & Locks

AND REPAIR...Patio Doors & Conservatories!

Team
Select



**YOUR LOCAL
MULTI-AWARD WINNING
TRAVEL AGENCY**



Team
Select



- Cruise Holidays
 - River Cruises
 - Touring Holidays
 - Rail Holidays
 - Solo Holidays
 - Luxury Holidays
 - Tailor-Made Holidays
- bespoke to your needs & wishes*

- Safari Holidays
 - Multi-Generation Holidays
 - Exclusive deals & more choice
 - Over 200 years of experience
 - Friendly & Attentive Service
 - Select Guest Rewards
- rewarding you every time you travel*
- ABTA & ATOL protected



**Our well-travelled team of travel
experts can help you find your next dream holiday!**



01234 819435

24 Mill Street, Bedford MK40 3HD

sales@cruiseselect.co.uk
www.selecttravelholidays.co.uk
www.cruiseselect.co.uk



BOOK WITH CONFIDENCE
ABTA & ATOL protected



**ARCHITECTURAL DRAWINGS AND
BUILDING DESIGN SERVICES**

Professional Architectural design services provided for all types of private residential building projects including extensions, loft/garage conversions, garages and outbuildings through to new build dwellings with all necessary council approvals obtained.

For free estimates and advice contact Steve Coates on Flitwick 01525 862457 or 07960 215053.
stevecoates72@gmail.com

S & S Coates Surveying & Design, Unit 4 The Courtyard,
r/o 13 High St, Clophill, MK45 4AB.



LOCAL INDEPENDENT LOCKSMITHS



EMPIRE LOCKSMITHS

SECURE YOUR EMPIRE



- ✓ NO CALL OUT CHARGE
- ✓ NO CALL CENTRES
- ✓ DBS/CRB CHECKED
- ✓ UPVC, WOODEN AND ALUMINIUM SPECIALISTS
- ✓ FULLY INSURED AND ACCREDITED
- ✓ LOCKS SUPPLIED TO BS3621

O.A.P. DISCOUNT AVAILABLE



FOR A FULL LIST OF OUR SERVICES AND SECURITY ADVICE
PLEASE VISIT WWW.EMPIRELOCKSMITHS.CO.UK



01525 450540



07983 520326

E.T. Accountancy Services

Experienced Chartered Accountant and Chartered Tax adviser based in Clophill providing a full range of accountancy and taxation services to businesses and private individuals.

To arrange a free initial consultation please telephone me on 01525 590465 or email emma@et-accountancy.co.uk

Chartered Accountant and
Chartered Tax Adviser

Emma Thoulass FCA CTA
www.et-accountancy.co.uk
01525 590465

David Carpenter

BUILDING SERVICES

*Friendly local craftsman
and restorer Est. 1986*

MOST BUILDING WORK UNDERTAKEN

including Carpentry and Joinery,
Bricklaying, Roofing, Plastering,
Tiling and much more

Phone: 01582 881015

Mobile: 07954 828695

to arrange a visit to
discuss your requirements.

Free estimates provided
References available



Happy Pets at Home

*Caring for your pets in your home
when you can't be there*

- Pet visits tailor made for
your pets' individual needs
- Cats • Dogs • Rabbits
 - Guinea Pigs • Hamsters • Gerbils



PLUS

I do dog walking with
your canine friend/s



CRB checked and fully insured
Based in Barton and have pets of my own

Email
petvisitsatyourhome@aol.co.uk

Phone June on
07950704980 or 01582 881482

Hairs & Graces

Unisex Salon



Wet Cut £17
Cut & Blow Dry £28
Colours start from £25
Special OAP rates



Opening Hours:

Monday	9.30-2.00
Tuesday	9.30-5.00
Wednesday	9.30-5.00
Thursday	9.30-8.00
Friday	9.30-8.00
Saturday	9.30-4.00

Zoe, Donna, Gemma
and Amanda look forward
to welcoming you.

Ring now to book an
appointment.
Appointments also
available with our Barber.

Burgoine Business Centre, 117 Clophill Road, Maulden MK45 2AE

01525 861491 • Loads of free parking

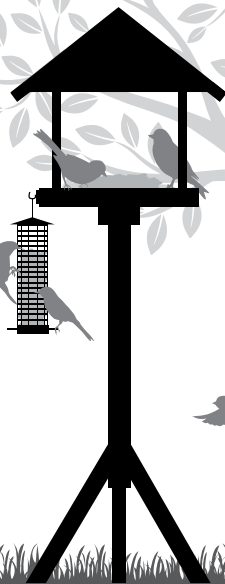
BritBits

Unique quinoa & suet bird pellets

- ✓ **Attract** more birds
- ✓ **Direct** from our farm
- ✓ **No Waste** – No grow
- ✓ **British** home grown ingredients
- ✓ **Super feed** includes Blackcurrant & Quinoa



Britbits are
so versatile -
they can be put
on the ground,
table and feeder!



LOCALLY MADE

To order go to www.ivelvalleybirdfood.co.uk

YOUR LOCAL BIRD FOOD SUPPLIERS - Use code LOCAL5 to save £5 off your first order

A L & G ABBOTT

F u n e r a l D i r e c t o r s

~ Established 1832 ~

WITH YOU WHEN IT MATTERS MOST

An independent family business continuing to provide a caring & professional service to Bedford, Kempston & the surrounding villages.



- 24 Hour Personal Service
- Pre-Paid Funeral Plans
- Private Chapels of Rest
- Green Burials
- Home Arrangements
- Civil Services Available



T 01234 843222

www.abbott-funerals.co.uk support@abbott-funerals.co.uk

150 BEDFORD ROAD, KEMPSTON, BEDFORDSHIRE, MK42 8BH

AIMS

Tim Kemp BA FCA
Top Barn Rectory Road
Steppingly MK45 5AT

TEL/FAX : 01525 717141
MOBILE : 07900 823 012
www.aims.co.uk
e-mail: timk@aims.co.uk

- ◆ **Professional** service providing for all your accounting and tax needs
- ◆ **Practical** advice based on 20 years experience in **running** businesses
- ◆ **Personal** approach with fixed fees relevant to the work **you** need
- ◆ **Friendly, local** accountant supporting the community for over 20 years

Please call for a free, no-obligation initial meeting

ACCOUNTANTS FOR *business*

Hills-Howson Financial Services

Financial adviser appointments available in your home or our office

The Old Post Office
53 High Street
Clophill
Beds MK45 4BE

Tel: 01525 861803
www.hills-howson.co.uk
hills.howson@btconnect.com

Including:-

Investments

Pensions

Protection

Annuities

W&H PEACOCK

AUCTIONEERS & VALUERS

Weekly Auctions and Valuations

Valuation, collection & auction service of individual items through to complete property clearances.

Including Antique & Modern Furniture • Clocks • Books
Ceramics & Glassware • Pictures & Prints • Bicycles
Jewellery & Watches • Garage Tools & Equipment
Household Electrical Items • Building Reclaims
Office Furniture & Equipment • Retail Products & Stock
Horticultural & Commercial Equipment • Vehicles
Garden Furniture & Effects



Café now open to public

Bedford Auction Centre, Eastcotts Park, Wallis Way, Bedford, MK42 0PE

01234 266 366

peacockauction.co.uk

THE COMPUTER MAN



Got a problem with your computer and don't know what to do? Suffering with a virus or spam?

Don't hesitate! Ring your local computer expert

**Remote repairs or home visits
(Day, evening & weekend)**

**Lap top/desk top loan
(Free pick up & drop off in local area)**

Comprehensive health check from £35 (Special Offer £35 - normally £40)
Refurbished fl at screen available from £15 • Refurbished base units available from £99



Contact Stephen Amos
07976 718567
the.computerman@ntlworld.com





rincontuition - Spanish & Maths

Expand your knowledge. Boost your confidence

Phone 01525 860743 Mobile 07952 667814

Exam techniques and preparation. Revision and practice papers: SATs, 11+ and GCSEs

Spanish for business or pleasure, all levels. GCSE & A-levels

Skills development: conversation, reading and writing

Maths: Boost your confidence and abilities

KS1, KS2, KS3, SATs, 11+ and GCSE practice papers.

DBS checked and references - Reasonable rates

01525 860743 - 07952 667814 rincontuition@aol.com



LIZZIE BROWN PET CARE & HORSE GROOM SERVICES



**DOG WALKING
PET POP-IN & FEEDING
PET/HOUSE SITTING
EQUINE GROOM***



(*BTEC Cert Equine Management)



Lizzie Brown 01525 862459 / 07500 989 700

Reliable friendly local service

Short notice available (no contract commitments)

Insured Quality references available CRB checked*

*(Disclosure & Barring Service)

Baths, Toilets &
Showers
Sinks and Taps
Guttering
Leaks and Burst Pipes
Drainage
Handyman jobs also



Silsoe based
No call out fee – free estimates
Fully insured and guaranteed
No job too small
07720 723653 01525 864859
info@betaplumbing.co.uk
www.betaplumbing.co.uk

Foot Health Practitioner

Corns, Hard Skin, Verruca, Fungal Nail Infection,
In-growing Toe Nails, Diabetic Foot Care, Athlete's Foot,
Pedicure, General Nail Cutting etc.

In the comfort of your home or at my clinic

Ann Gibbons MCFHP, MBAFHP.

Competitive Rates

Tel: 01462 813252 Mob: 07872 315763

Web: www.shamrockclinic.co.uk

For opening hours and other details please refer to my website



GARDEN DOCTOR

Rob McLeod
Pruning Specialist

Professional, Local, Experienced

- * All tree and hedge work undertaken
- * High standard of work
- * Rubbish cleared from site
- * Free Quotations
- * Local, reliable service you can trust



Tel: 07763 239340 or 01525 861568
email: garden.doctor@btinternet.com

Tree Surgery & Removal
Shrubs & Fruit Trees
Pruning & Spraying
Fully certificated and
insured

Call the Garden Doctor and bring Good Health to your Garden



We'll get you up and running!

We offer the very best physiotherapy care from a friendly approachable team of nine highly trained Chartered Physiotherapists all members of the Health Professionals Council

Expert treatment including:

Neck/Back/Hand and Tennis Elbow Pain
Headaches/Migraine/Sciatica
Incontinence/Pelvic/SIJ/SPD/Pregnancy Back Pain
Sprains/Strains/Torn Ligaments
Whiplash/RSI/Osteoporosis/Sports Injuries

Specialist Physiotherapists:

Neurological, Paediatric, Vertigo and Dizziness

We also offer complementary treatments:

Acupuncture, Reflexology, Massage, Indian Head Massage,
Chinese Herbalist, Lymphatic Drainage and Pumps



Tel: 01525 720882 www.chartered-physiotherapy.co.uk Email: amphillphysio@btconnect.com

7 Station Square, Flitwick, MK45 1DP



The Happy Place.co.uk

On the Green beside the Post Office every Friday, 3.30-7.30pm

We are your local mobile fish and chip van, we have been parked on the green every Friday for the past 6 years. We serve only the highest quality produce, cooked fresh to order and served to you by our friendly staff.

Why don't you pop down and come and Try Our Fry!

To avoid waiting in the cold, give us a call to

place your order on: 07833 786108

A big thank you to all our customers who have loyally supported us over the past couple of years.

Chapman & Kirby Heating

Gas, Plumbing & Heating Installations

Gas Safe Registered

Boiler Servicing & Maintenance



Call us now

Tel: 01525 861255 Mob: 07831 132308

Email: info@chapmanandkirbyheating.co.uk

1C, Old Silsoe Road, Clophill, Beds., MK45 4AR

NEVILLE

FUNERAL SERVICE

Established 1875

Reassurance when you need it most

Serving the people of Bedfordshire since 1875



Neville Funeral Service

inc. George Squire & Sons since 1976

24 Clifton Road

Shefford SG17 5AE

t: 01462 813258

e: shefford@nevillefuneralservice.com



Neville Funeral Service

The Old Church Flitwick Road

Ampt Hill MK45 2NT

t: 01525 406132

e: ampt Hill@nevillefuneralservice.com



www.nevillefuneralservice.com

The UK's No.1 Lawn Care Company



- Scarification
- Aeration
- Lawn Fertilising
- Weed Control
- Moss Control
- Water Conserver
- Pest and Disease Management



GreenThumb has a variety of treatment programmes to suit your pocket that include our traditional 'pay-as-you-go' service and our new, pay monthly, Direct Debit programmes, where you can save up to 25% annually.

Our treatments start from £5 per month, that's cheaper than D-I-Y and without the hassle!

Call your local branch today for a FREE lawn analysis and no obligation quote.

0800 0111 222

GreenThumb
LAWN TREATMENT SERVICE



Find us online at: www.greenthumb.co.uk



- Suppliers of traditional and modern equipment
- Working whirlpool & spa baths, power & steam shower systems on display
- Over 40 settings on display
- Complete installation service if required
- Personal friendly service from a family run business
- Wall and floor tiles
- Accessories
- Mirrors
- Bathroom furniture
- Heated towel rails
- Saunas
- Bathroom cabinets

SHEFFORD 01462 627002

www.bathroomvogue.com

Unit 4A, Shefford Industrial Park, St Francis Way, Shefford SG17 5DZ



Tel: 07966 665654

Web: www.emtacademy.co.uk

Email: carrie@emtacademy.co.uk



EMT Academy – Emergency Medical Training is a Clophill based First Aid Training company

All EMT Academy trainers have worked professionally as Emergency Medical Technicians, Paramedics or Police Firearms Medics so we can bring real life experience and scenarios to your course.

Courses Available

- First Aid at Work
- Family First Aid
- First Aid at Work Requalification
- Paediatric First Aid
- Emergency First Aid at Work
- Basic Life Support
- Annual Refresher
- Bespoke First Aid*
- Automated External Defibrillator

Our feedback shows that the one-to-one practical skills taught by our instructors ensure students feel confident to deal with any unexpected medical emergency.

If you are a parent, grandparent, babysitter, childminder, carer, employer or an organisation* e.g. sports clubs, Guides/Scouts, equestrian, please contact us, we will be happy to discuss which course will best suit your needs.

LOCAL ALLOY WHEEL REFURBISHMENT



**Tel:
01525
860069**

Alloy Wheel Repairs

Diamond Cut Alloy Wheels Repaired On Site

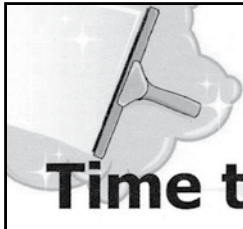
Powder Coat Primers & Lacquers

Fast Turnaround Alloy Wheel Welding

Tyres At Competitive Prices

NEW for 2015 - 4 Wheel Alignment Service

www.mintalloys.co.uk



Time to Shine

Peter Hendry
Traditional Window Cleaner

07590599381
phendry8@hotmail.co.uk



Compu-Doc

PC / laptop crisis ?

01525-402227

Call the Doc for -

Hardware & software

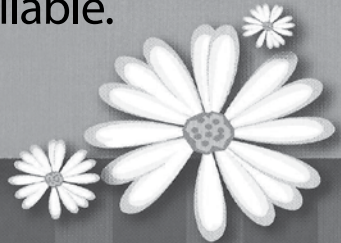
Diagnosis & treatment

john.stafford@compu-doc.co.uk

Daisy Cooper

Spring cleans, one off cleans and moving home cleans all available.

Daisycooper22@hotmail.co.uk
Please call 07913 332914



Keeping your home as fresh as a Daisy

Conifer
Kennels

Quality
BOARDING
DAY BOARDING
HOLISTIC FOOD SHOP
GROOMING & GOING HOME BATHS
OFF SITE NATURE WALKS
QUALIFIED TEAM



nutriment
ENHANCED raw diet formula

www.coniferkennels.co.uk 01525 860339



Akela
WILD WASH

YAKERS

SKIPPER'S

Eden
Holistic Pet Food

GREEN & WILD'S
Naturally for pets

Pre-Order
Service Available

The Causeway, Clophill, Beds. MK45 4BA

Pilates in Clophill

Monday evenings

Postnatal Pilates
Classic Pilates
Powerhouse Pilates

Wednesday mornings

Classic Pilates



EQUILIBRIUM
FITNESS

Pilates by Sally is a fun and highly effective way to stretch, strengthen and condition your body. Each class is tailored to your needs and ability

Small classes (max 8 people) allow a more personalised approach with greater focus on **your** technique so you get the most from **your** class and benefit sooner.

Book your consultation or find out more

Contact Sally@equifit.me.uk or call 07765 240354

Private sessions and other days also available, please enquire



BURGLAR ALARMS

New Alarms Fitted or Upgrade Existing Alarms

BURGLAR ALARMS

We fit New Alarms - Wired or Wireless Systems
We can service and maintain your existing alarm

CCTV

We fit high quality systems to maximise your security.
Access your CCTV via the internet or mobile.

DOOR ENTRY

We fit a range of quality video and audio intercoms
to suit your needs.

*We are a family run business with over 35 years
experience in home security and crime prevention.*



www.maximumsecuritysystems.co.uk

Contact:

01582 864138 / 07746 111520

For a free quote and consultation

Root 'n Branch

Your Local Friendly & Reliable Gardener

All aspects of Garden Maintenance undertaken
• PRUNING • MOWING • WEEDING • PLANTING • HEDGING

Southfields, Shefford
email: whooley@hotmail.co.uk

Tel: 07771 537385

Public Liability
Insured

ADAM IN YOUR GARDEN

**TREE SURGERY, HEDGE TRIMMING,
TURFING, FENCE MAINTENANCE,
DECKING, PATIO CLEANING**



Qualified, Fully Insured, Competitive Rates
Free Estimates

TEL: 01582 518954 MOB: 07828 490360

Web Site: www.adaminyourgarden.co.uk

ANDREW BAKER WINDOWS

9 SHEFFORD ROAD
CLOPHILL BEDS
MK45 4BT

SPECIALISING IN UPVC WINDOWS,
DOORS, CONSERVATORIES,
FASCIA, SOFFITS, GUTTERS AND
CLADDING. ALSO AVAILABLE FOR CARPENTRY
WORK. NO JOB TOO SMALL OR LARGE.

20 Years experience.
Free local quotes.

FENSA

Fensa Registered
FIVE YEAR GUARANTEE

Contact Andrew: 01525862804 / 07825017855

Email: abakerwindows@gmail.com

HIGH QUALITY CARPET, UPHOLSTERY, RUG AND LEATHER SUITE CLEANING

Using Eco-Friendly Products

Ring Steve

(Barton) 01582 882620

(Mobile) 07769 042523

Email: bedscarpetcleaners@gmail.com

www.bedscarpetcleaners.co.uk



McCaffrey

Your local resource for residential
build, refurbishment and maintenance



General building works
Extensions
New builds
Internal refurbishment/alterations

Brickwork
Carpentry
Painting & decorating
Purpose made joinery

Plumbing and heating
Electrical installations
UPVC windows & doors
Garage conversions



call us to discuss your building requirements

01525 861041

E. info@mccaffreybuild.co.uk W. www.mccaffreybuild.co.uk



OSTEOPATHY

Deborah Beare BSc (Hons) Ost.
Registered Osteopath

**The Clophill Centre for
Complementary Therapy**
Clophill Fruit Farm,
Shefford Road
Clophill

- Cranial & Structural Osteopathy
- Neck & Low Back Pain
- Muscle Tension
- Sports Injuries
- Arthritic aches & pains
- Headaches

To book appointments call: **07969 921112**

Washing Machines Dishwashers Dryers Electric Ovens Repairs Servicing Sales



A local family business offering
a quality service at a competitive price
Est. 1981

Tel: CLOPHILL 860148
or Tim Downing direct on 07969 545 276

A member of the White Goods Trade Association
Fully Insured

MB

ACCOUNTING SERVICES

accounting solutions for the
Self-Employed and ***Small Business***
including

HMRC tax returns • Accounts • Bookkeeping

For a totally confidential service at **very competitive rates** contact
Richard Fairholm T: 01525 861087 M: 07714189994 E: mbaccounts@btinternet.com

Stephens

Your local removals & storage company



Specialising in house removals and office relocations in the UK, Europe and Overseas.

REMOVALS

Local, National, International

STORAGE

Secure & Containerised

PACKING

Full Or Part & Materials

LONG ESTABLISHED REMOVAL COMPANY OFFERING A PROFESSIONAL, FRIENDLY SERVICE

COMPREHENSIVE INSURANCE • FREE ESTIMATES

01582 572967

STUART DREW ELECTRICAL SERVICES

MEMBER OF THE ECA
PART P CERTIFIED QUALIFIED TO 17TH EDITION

From extra lights & sockets, to re-wires. Fault finding and electrical safety certification. For a professional, courteous service with free estimates & all work guaranteed, please call me

29 Lincoln Way
Harlington
Beds
LU5 6NG

**Fully qualified & insured
30 years experience**

Telephone:
01525 875965
07941 812662

ROGER STOREY

YOUR LOCAL PAINTER AND DECORATOR

Friendly and Reliable Service
Many Years Experience

Please phone: **01525 861253** or **07800 777615**

Based near Toddington, Bedfordshire.

**We rescue, rehabilitate & re-home stray & abandoned cats.
We have lots of beautiful cats waiting for loving homes.**

Ring the shelter on 01525 875993

or Sue on 01582 650167 to arrange a visit.



Registered Charity No. 1098984

Visit our website @www.straycatrescue.org.uk

Advertisers index

Architectural Services

Daniel Design & Build 20
S&S Coates Surveying & Design 26

Auctioneers & Valuers

W&H Peacock 31

Bathroom Services

Bathroom Vogue 36

Builders & Carpenters

David Carpenter Building Services 27
McCaffrey Build 41
Peter Sharpe Building Services 19
Stuart Benson Building Projects IFC

Carpet Services

Carpet & Upholstery Cleaning 41

Car Services/Repairs

A&F Motors Ltd IFC
Automotive Services Bedford 22
Mint Alloys 37
TC Coomber Car Services BC

Chimney Sweep

Poppins Chimney Sweep IBC

Cleaning Services

Daisy Cooper 38
Ovenclean 21
Time to Shine – Window Cleaner 38

Computer Services

Compu-Doc 38
The Computer Man 31

Design and Marketing

Abrahams Creative 19

Electrical Services

Stuart Drew Electrical Services 43

Financial Services

AIMS Accountants 30
ET Accountancy Services 27
Hills-Howson Financial Services 30
MB Accounting Services 42
Savage Accountants 21
SJ Tax & Accounting Services 23

Funeral Services

AL&G Abbott, Funeral Directors 29
Neville Funeral Service 35

Garden Services

Adam in your Garden 40
Garden Doctor 33
Green Thumb Lawn Treatment 36
Root 'n Branch 40

Health & Beauty

A Cut Above Hairdressing 23
Amphill & Flitwick Physiotherapy 34
Deborah Pedley Osteopathy 42
Equilibrium Fitness - Pilates 39
Hairs & Graces 28
Libra Wellness 21
Linda Allsop Physiotherapy 23
Route 66 Barbers 25
Shamrock Clinic - Foot Health 33
Slimming World 20

Home Improvements

Christopher The Painter 21
Roger Storey - Painter & Decorator 43

Locksmiths

Empire Locksmiths 27

Medical Training Services

EMT Academy 37

Music and Entertainment

Greensands Community Choir 24

Nursery Schools

Clophill PreSchool BC
Clophill St Mary's C of E
Lower School and Nursery 26
Clophill Toddler Group 22

Pet & Animal Services

Conifer Kennels & Cattery 38
Happy Pets at Home 27
Ivel Valley Bird Food 28
Lizzie Brown Pet Care 32
Personal Dog Walker 23
Stray Cat Rescue 43
The Bluecat Luxury Cattery 25

Plumbing & Drainage Services

Beta Plumbing 33
Chapman & Kirby Heating 34

Print Services

Fidelity Design & Print IFC

Public Houses

The Stone Jug 16

Removals & Storage

Stephens 43

Repair Services

Tim Downing Repair Services 42

Security Services

Maximum Security Systems 39

Take-aways

The Happy Plaque 34

Travel Services

Select Travel Holidays 26
Qube Travel 20

Tuition Services

Rincon Tuition (Spanish & Maths) 32

Village Hall

Clophill Village Hall 22

Windows/Replacement

Andrew Baker Windows 40
AW Windows IBC
Misty Double Glazing 25

IFC = Inside Front Cover

IBC = Inside Back Cover

BC = Back Cover

Ads from as little as **£50** per year

For further information about advertising in Spotlight,
please contact our Advertising Manager at ads@clophillspotlight.co.uk



Poppins Chimneys

**Chimneys Swept
Wood and Multifuel Stove
Installation & Liners**

Great Service - Great Price!



01525 860424 or 07858 688785
mark@poppinschimneys.co.uk

**NO PRESSURE SALES – YOU DEAL WITH
THE OWNER FROM START TO FINISH**



- ✓ A-rated windows as standard
- ✓ Composite doors
- ✓ High security
- ✓ Bifolding doors
- ✓ Conservatories
- ✓ Fascias, soffits and guttering
- ✓ Insurance-backed guarantee
- ✓ Fensa certificate



Contact: ANDY WOOD

01582 536944 or 07796 272539
sales@awwindows.co.uk



See reviews from satisfied customers at awwindows.co.uk

Clophill Preschool

Your local Outstanding Preschool,
based at Clophill Village Hall -
welcoming children from
2 years of age.

We'll help your child to become an inventive
and creative learner. With access to a fantastic
outdoor area, our focus is on natural and
exploratory 'play with a purpose'.



Call us today to find
out more:
07765 887868 or
07936 006381

www.clophillpreschool.co.uk



T.C. COOMBER



MOT'S CLASS 4/7
SERVICING & REPAIRS
CAR & COMMERCIAL
TYRES & EXHAUSTS
AIR CONDITIONING
DIAGNOSTIC CODE READING

**Collection
& Delivery**
SERVICE AVAILABLE
Please ask

AMPTHILL
01525 406330

UNIT F, AMPTHILL INDUSTRIAL ESTATE, STATION RD, AMPTHILL, MK45 2QY