

Vol 38 | No.9

FREE

CLOPHILL SPOTLIGHT

NOVEMBER 2016



**LOVE YOUR
LOCAL NEWS**

AMPTHILL PRINT CENTRE

**DIGITAL PRINTING
DESIGN & MARKETING
DIRECT MAIL**

and much more...

...and we're right on your doorstep at

Unit 24 Station Road Ind Est, Ampthill, MK45 2QY
(Just off the A507 Ampthill bypass, past the Post Office)

WE PRINT...

- Stationery
- Newsletters
- Menus & Tent cards
- Brochures
- Flyers & Leaflets
- Catalogues
- Books & Booklets
- Direct mail
- Training Manuals
- Banners & Posters
- Greeting cards
- Calendars
- Labels & Stickers
- NCR pads
- Folders
- Exhibition panels
- CD/DVD duplication
- Photocopying

3 DAY STANDARD SERVICE | SAME DAY AVAILABLE

www.fidelityprint.co.uk

Get a quote 01525 300001 quotes@fidelityprint.co.uk

fidelity

Unit 24 Station Rd Ind Est, Ampthill



MOTORS LTD

Tel: (01525) 860292

Tel: (01525) 404919

208 Clophill Road, Maulden, Bedfordshire MK45 2AF
89 Oliver Street, Ampthill, Bedfordshire MK45 2SA

**CAR AND COMMERCIAL VEHICLES
ALSO CLASSIC & AMERICAN CARS
SERVICING – REPAIRS – BREAKDOWN
SPRAYING – M.O.T.**



Stuart Benson Building Projects

**Design, Build and Maintenance including Interior Refurbishments,
Kitchen / Bathroom fitting, Tiling, Flooring, Skirting boards, Doors
Garage conversions, Exterior Decking, Patios, Driveways
Garden Offices/ Sheds**

Tel: 07946 579862 or 01525 403083

Email: benson.stuart@.googlemail.com



A word from the Editor...

Hi there...

Here at Spotlight, thanks to everyone who contributes news and articles, we're able to bring you a parish magazine that has plenty of variety. And this month is no exception.

Along with our regular pages, we have details of fun events like Quiz Nights and the intriguing Beetle Drive, plus we've also slipped in some Christmas-related news (sorry, but it's coming up fast, you know!).



We have a lovely piece written by a former resident who spent her childhood in Clophill and shares with us some wonderful memories. And we continue our series 'Remembering Clophill's Fallen', which this month focuses on three brave young men who all died on the same day in the First World War.

Our cover photo this month is a reminder that this month it's Remembrance Sunday – a day on which we can all remember and honour those who gave their lives for us.

See you all in December.

PS: Don't forget that December is the last issue until February 2017 – if you have any January events please email us details by 20th November!



The magazine staff

EDITOR/ADVERTISING MANAGER	Helen Gent editorial@clophillspotlight.co.uk ads@clophillspotlight.co.uk	864836
DESIGN MANAGER	Chris Abrahams cmabrahams@yahoo.co.uk	
DISTRIBUTION MANAGER	Pete Liddle	860113
TREASURER	Richard Pearson	861110
COPY DEADLINE	20th of the month	

Don't forget you can now read Spotlight online at
www.clophillspotlight.co.uk

Memories of Clophill

Gillian Lovell spent the first seven years of her life in Clophill, where her family rented part of Oakley House on the High Street. She shares her fond memories of the village with Spotlight...

To me, life was idyllic at Oakley House during World War Two, but I was aware that something out of the ordinary was going on. Tanks occasionally rumbled through, with sweets being thrown out to children. I remember going to Mrs Wootton's shop for my weekly ration of 2oz sweets, which we supplemented with vile-tasting liquorice wood. One night a bomb exploded in the woods, blowing out the cellar windows, which no doubt caused havoc elsewhere in Clophill. Toys



Oakley House

were scarce but there were Italian prisoners of war living somewhere nearby who made beautifully crafted wooden toys. Their payment was always Woodbine cigarettes.

In 1944, when I was five years old, I went to Clophill School, where Mr Holden (with his posh Austin car) was the headmaster and Miss Ayden was the infants' teacher. I remember BBC Music and Movement radio on a large radiogram, when all the old desks were cleared back to give us more room. On Empire Day we had to march round the Union Jack in the playground and salute. One day a small caravan appeared. I was led into it and two teeth were extracted. My parents were furious at not being informed. As for me I still recall the smell of that awful rubber mask!

Some of the names from schooldays that I can remember are Mary Diggins, whose dad owned the bike and garage business; Susan Wrighton (parents ran the Post Office and shop); Jennifer Nicholls; twins Jacqueline and Gillian Taylor; and John Eaton. We were friendly with Mr and Mrs Ashley (I can still smell his pipe!), the Misses Anderson (Holly Cottage?), Nellie Stratton at The Slade and the Collinsons who were at the Waterworks. I was fascinated by the gleaming machinery in there. At Oakley House, Mr Izzard was the gardener, Gerald Lammas kept the coal scuttles topped up and Mr Nott was the baker. Mr and Mrs Evans lived next door with a bulldog. On the other side at the Mill House were Mr and Mrs Lucas.

Clophill was a well-organised, self-sufficient village with many activities to join. My mother belonged to the Mothers Union and WI and I remember pork pies being distributed from the Misses Goodall's garage which opened onto Mill Lane (was it the WVRS?). The village hall was the base for all kinds of activities – musical entertainments, magician and children's parties; it must have been a welcoming diversion from the war. I remember Sunday School at the church (Mrs Gobey kept the church clean and tidy). Mr and Mrs Garrett owned the fish and chip shop and my friend and I used to scrounge the previous night's chips. Doctor Maxwell diagnosed my chicken pox, but I don't remember where his surgery was based. The cows from Taylor's Farm were led along the High Street twice daily to be milked, so you can imagine the state of the road.

At harvest time the women and children used to go gleaning, so nothing was ever wasted. We also collected rose hips from the hedgerows – this was turned into rose hip syrup, which was distributed nationally to the children as it was full of vitamin C. We also had a malt supplement called Virol and the dreaded cod liver oil.

Mr Appleby was a local farmer and I remember there was a tame jackdaw perched on a post next to the field entrance always. We were fascinated by him, so his owner must have lived in the cottage there. As well as Mrs Wootton's shop and the post office shop, I remember another shop somewhere near the Rectory run by a lady. It sold anything and everything!

A men's barber rented a front room at Mr and Mrs Diggins' house. The fields behind there led to the woods at the end of Back Street where there was a disused quarry. We used to picnic here and one day found the remnants of a fallen barrage balloon. Its thick silver mackintosh-type fabric made a good picnic ground sheet. On the other side of the A6 were sand pits where much fun was to be had sliding from top to bottom.



Gill at Oakley House with her father (on her right) and mother (at the back in front of the window). Also pictured is the MP for Mid-Bedfordshire, Alan Lennox-Boyd (on the left), surrounded by his family. The woman in the black hat is Margaret Rothwell, the owner of Oakley House.

At the end of the Causeway was another wood inhabited by red squirrels (long gone, no doubt).

There were old metal rail tracks in there – all very mysterious, we thought. Of course the chestnut woods were always especially popular at Autumn time; I miss them still! One day someone discovered a fallen empty parachute. Its silky material was well used to make all sorts of garments.

I especially remember Maulden Woods at bluebell time and can still visualise vast swathes of wild daffodils. *I would love to think they are still there...* Gillian Lovell (Née Hunter)

Clophill United Charities

Christmas donation to Widow(er)s and Pensioners in need:

This year the distribution will take place in early December at these venues:

Friday 2nd December 2.30pm-3.30pm in the Village Hall Committee Room

Saturday 3rd December 10am-11am in the Oakley Room, St Mary's Church

Sunday 4th December 10.30am at Beverley Court.

No person or group is entitled to receive this benefit as of right. The mantra of the Trustees is to provide 'Relief in Need' and more widely, public benefit. The Trustees are required by the Deeds of the Charities to use their income to meet the needs of those in real hardship.

Please be aware that forthcoming Christmas donations should only be claimed by those widow(er)s and pensioners who really are in need of extra help at an expensive time of year and not by those who don't need it. This will enable us to provide help to others throughout the year.

Posters will be displayed during November as a reminder of these times.

Please remember too that all through the year, Clophill United Charities are pleased to be able to help Clophill villagers of all ages in times of hardship. If you, or anyone you know who lives in the village, is experiencing financial hardship please contact our clerk,

Gillian Hill, in total confidence on **01525 860539**.

On behalf of the Trustees: Richard Pearson – Chairman

A huge thank you...

... to everyone who helped to save my son's life.

On Thursday 29th September, my son, Tobias, was stung by wasps at our home on the High Street and suffered a severe and life-threatening anaphylactic shock. I thought it would be quicker to drive to the hospital than wait for an ambulance to arrive and en route stopped off at the Post Office to grab some water and antihistamines, thinking that may buy us some time.



But as I sped down the A6, Tobias started losing consciousness and collapsed onto me on the driving seat. I stopped to frantically flag down help and incredibly fortunately two off-duty policewomen and an off-duty paramedic stopped. They called 999 while someone kindly took my keys to remove the car from the road.

When the ambulance finally arrived, it was blue-lighted to Bedford Hospital where Tobias was rushed into resus. One of the policewomen called my best friend, who came straight to the hospital for support. We called his dad then just prayed.

It seemed like forever and I couldn't wait any longer – I went into the resus area where my youngest son lay weary from his fight. He was still blue round the edges, but he was able to talk. I could see then with my own eyes that he'd made it.

I'd like to thank all those who helped us in the road – they were so kind, loving and understanding – and Bedford Hospital and Joe (Trevor's son) at Clophill Post office. All of the people involved could not have been more helpful – and without their help my son would not be alive today. *Deborah Osborne*



THREE KINGS CHRISTMAS TREES

Fresh Cut Christmas Trees

Direct from the Grower

Please come and visit us and have a look around

All trees are displayed inside

Opening from:
MONDAY
28th November



9 am – 6pm
7 days a week

GROWS WELL

SEVEN ACRES NURSERY, SHEFFORD ROAD,
(BEADLOW) CLOPHILL. SG17 5PL

Rotary Club – what we're here for



We're for communities... From the local neighbourhood determined to make their streets a better place to live to the global network dedicated to wiping polio from the face of the Earth – and every kind of community in between. So we seek out and champion life's doers. The joiners-up and the muckers-in. The communities with the energy and desire to make a positive difference. Then we work with them to make sure that their good causes become good effects. Because we believe that society works better when people work together.

We're for making a difference... Being part of Rotary involves more than just giving something back to the community; it's about you personally helping it to prosper and making some great friends along the way. We're looking for like-minded people to join us and help others achieve and give great causes the benefit of your own skills, experience and enthusiasm.

We're for thriving together... Our clubs are friendly places that regularly invite guest speakers from a wide range of backgrounds to talk and share their knowledge for the benefit of our members. But as well as improving social and cultural awareness of our members we can also help you develop your own skills in leadership and public speaking.

We're for socializing... Outside of their community work our 51,000 British and Irish members share a common interest in friendship and having a good time. Just visit any one of our clubs and you'll feel the sense of camaraderie. So why not arrange to go along and give your local club a try? You'll be in good company.

• Your local club, the Rotary Club of Barton le Clay, meets at Beadlow Manor Golf Club, Nr Shefford, on Tuesday evenings at 7.15pm for 7.45pm. To arrange a visit, call David Swain on 01525 861107. For more information go to www.bartonleclayrotary.org or www.ribi.org/enquire

Rotary Club of Barton le Clay's famous GastroQuiz



The quiz that tickles your tastebuds



Silsoe Village Hall

Saturday 12th November, 7.30pm prompt

Tickets £12 per head, includes supper.

Bring your own wine, glasses etc.

Contact 07951 720103 for tickets

**Proceeds in aid of charities: ShelterBox (Italy appeal),
Tools for Self-Reliance and Carers in Bedfordshire**



Christmas Wreath Making

Start the festive season with some natural craft creations for your front door. They will definitely be unique. A glass of mulled wine also helps the creativity.

3rd December 10.30 – 1.30
£22 Adult £5 Child

Christmas Craft Market & Cafe

Kick off December in a festive way. Come and get those 'hard to buy for' friends a present from one of our many local artisan and craft stalls while you enjoy a mulled wine and some festive music.

4th December 1pm – 5pm
Free Entry
Stall Spaces still available



Tower Tours & Pop Up Café 2.30 – 4.30pm

We will be turning the Nest into a pop-up café & running Tower Tours of the Old Church on these dates.

Tours are £3 an adult £2 a child

Pop Up Café includes tea, coffee, hot chocolate, soft drinks & home made cakes (individually priced)

13th November
27th November
26th December
1st January
22nd January

Eco Lodges, Clophill, Bedfordshire MK45 4BP



Come and stay at the Eco lodges and enjoy great views, tranquillity and some good food.

www.ClophillEcoLodges.org.uk

Tel. 07935911207

Booking enquiries: info@clophillheritage.org

[Facebook.com/Clophillecolodges](https://www.facebook.com/Clophillecolodges)

Twitter: @clophilleco



CLOPHILL METHODIST CHURCH

BEETLE DRIVE

Saturday 12th November 2016

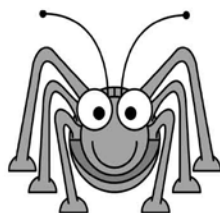
6.30pm

Adults £5 Children £2.50

Refreshments



In aid of
Clophill Methodist Church
tel: 01525 860695



News from Clophill Heritage Trust



Ali Bradbury receiving the award from HM Lord-Lieutenant of Bedfordshire Helen Nellis

Living Countryside Awards 2016

Now in its seventh year, the CPRE (Campaign to Protect Rural England), Bedfordshire, Awards recognise the individuals and organisations who are going the extra mile to enhance Bedfordshire's environment. On 4th October at the John O' Gaunt Golf Club, nr Sandy, we were delighted to receive the CPRE MARK, the top award in the 'Sustainable Enterprise' category. The judges were impressed by our strategic plan to make use of the wealth of natural resources to bring benefits to the local community and resident guests.

Bedford College students visit

Thirty first year students on the HNC in Construction & HNC in Civil Engineering Courses recently visited Clophill Church & Eco Lodges to support their studies. Ali Bradbury (Project Manager) gave them a talk regarding the design and planning of the Clophill project followed by a tour of the site. Further visits have been planned to look at materials used in the project and to discuss the environmental factors that affected the design. Students found the venue excellent with terrific staff and are planning to join in some of the various public events that take place there.



Bedford College students at the Old Church

Want to become a volunteer? Contact: Kayleigh Waight (**07889 980872**), Ali Bradbury (**07894 710001**), John Wright (**07860 839845**) or Barry Breed (**01525 860834**).

Find us at www.ClophillEcoLodges.org.uk and on Facebook.
For bookings, get in touch at info@ClophilHeritage.org

Xmas Lights

Carl Colyer wants to let everyone know that sadly he won't be doing his famous Christmas Lights this year. As anyone who has seen Carl's display will know, it's a dazzling sight – and always raises much-needed money for the East Anglian Air Ambulance. Carl says his Christmas lights will return next year bigger and better!



Remembering Clophill's Fallen

Continuing our series of the centenary of Clophill's brave men who lost their lives in the First World war, this month we focus on three young men who died on the same day.

In November 1916 the village learnt the news that three of their young men had been killed in action – all on the 13th of November 1916. The men – part of the 4th Battalion of the Bedfordshire Regiment – were Charles Gudgin, 19, Henry (known as Harry) Diggins, 19, and Herbert Webb, 23.



4th Battalion Bedfordshires, 1916

Park. Just before his death Ampthill News reported:- 'Lance Corporal Charles Gudgin, 4th Bedfords, has been recently promoted Corporal. He has come through the fighting in which he has taken part without a scratch.' Charles is commemorated in the Ancre British Cemetery, Somme, France.

Henry (Harry) Diggins was also born in Clophill in 1897. In 1911 he worked as a farm labourer and lived with his parents and six of his siblings. They lived in Hall End, Maulden, with their father, Charles, a police pensioner, and mother, Mary. Henry's brother, Ernest, also died during WW1 and is named on our memorial. Another brother, Owen, also enlisted but thankfully survived the war.

Harry joined up in November 1915 and in the following July was sent to the Western Front. The Battle of the Somme finally ended on 18th November following increasingly difficult weather conditions.

Herbert Webb was born in Clophill in 1893. In 1911 Herbert worked as a farm labourer living in Wood House, Beadlow, with his mother Sarah and father Henry, also a farm labourer, and five of his siblings. By 1911 his parents had had eight children, all of whom had survived. Herbert's maternal Grandfather Henry Tingey Bushby lived with them, too Herbert's brother, Augustus, is also commemorated on our memorial.

Charles Gudgin was born in Clophill in 1897. In 1911 he was still at school and living with his parents, Alice Elizabeth and John, and six of his siblings at 56 High Street. Also in 1911, Charles had passed the Midland Counties Union Rural Arithmetic examination, whilst at evening school.

Charles was posted to France in July 1916 after eight months training at Ampthill



Many thanks to Mary Stokes for sharing her photo of Harry Diggins

Amphill News reported as follows:-

July 1915 – ‘Mr. Bertie Webb, gardener at the Rectory, who for a considerable time has been a most energetic Scoutmaster, has enlisted in the Army Services Corps, Mechanical Transport Branch, and Mr. Hubert Young, has joined the same Corps.’

February 1916 – ‘Pte. B Webb, A.S.C., was agreeably surprised to meet his former master, Capt. Matthews, Rector of Clophill & Chaplain to His Majesty's forces, last week in France.’

June 1916 – ‘Private Bertie Webb, A.S.C., writing to his parents, says he has seen the Rev. Cecil Lloyd Matthews, who has been in hospital with throat trouble, but is now convalescent, and may soon visit his parishioners. Private Webb was chauffeur and gardener at the Rectory, Scoutmaster of the local group, and cricketer.’

November 1916 – ‘Pte. Bertie Webb, A.S.C., returned to France on Oct. 26. He has played football in France within sound of the enemy artillery.’

Harry and Herbert are commemorated on the Thiepval Memorial, which bears the names of more than 72,000 officers and men of the United Kingdom and South African forces who died in the Somme sector and have no known grave. Over 90% of those commemorated died between July and November 1916.

In December 1916 Amphill News wrote – ‘On Monday evening a memorial service for four Clophill lads who have lately fallen in France was held. The men were Corpl. C. Gudgin, and Privates H. White [who had died the month before], B. Webb, and H. Diggins.’



Clophill Friends of the Bedfordshire Cheshire Home

Huge thanks to everyone who helped or supported us at our Jumble Sale at the village hall last month as well as to everyone who gave us jumble to sell and to Deepak and Dakhsa at Clophill Post Office & Stores for kindly donating raffle prizes.

We're delighted to have raised £550.51 on the night – which includes a generous donation of £50. And, thanks mainly to Gillian Hill's hard work on Ebay, we also sold various items prior to the jumble sale raising an additional £314.59. **So our grand total was an amazing £865.10.**

The Home at Amphill is hoping to raise enough money next year to create a garden for the residents to benefit from and be involved with, but in the meantime we're still funding fortnightly shopping trips to Bedford and have agreed to pay for another year's visits from Teaching Talons who bring a huge variety of animals and birds into the Home.

We really can't do it all without your help and this year is our Group's 40th which makes it extra special!

Our next Jumble Sale will on 21st April 2017 and if you have any books or good-quality jumble to spare we'll be happy to store it for you. If you'd like to help at our next sale or would like to visit the Home or find out more about our group's activities, please call **861110**.

The Curious Disappearance of Major Glenn Miller

Monday 7th November 2016

Unravelling the mystery of the famous band leader's disappearance. Speaker: Tony Eaton

A Once in a lifetime Find

Monday 5th December 2016

How two local people found a lost Shakespearean play and took it to the West End.
Speakers: Rev. Stephen Williams and Jean Yates

Visitors are very welcome.

Venue: **Lecture Theatre, Flitwick Library**, Coniston Road MK45 1QJ

Time: 7.30pm for 7.45 pm

£2 for members and £3 for visitors is payable on the door

For further details contact Clive Makin at clive.makin@ntlworld.com
or call 01582 655785, www.adalhs.org.uk

Amphill & District Archaeological & Local History Society



Westoning Players

present

Terry Pratchett's

Going Postal

adapted by Stephen Briggs

WESTONING VILLAGE HALL

Thursday, Friday, Saturday

24, 25, 26 November 2016

7.30pm

TICKETS £9

Box Office 07525 926780

westoning.players@gmail.com



Clophill Preschool News

Hi everyone, something a little different this month... we're forever telling you about the running of our Preschool from our perspective, so this month we thought we'd hand the reins over to some other people with experience of our setting:

Lynne is one of our Key Workers:

'The children are wonderful, funny and bright and it's a great privilege to be a part of their day, watching their personalities and understanding grow. I feel particularly lucky to now be in such a great environment in such a rewarding role and thanks to the children there's never a shortage of fun or laughter.'

Lisa is a one-to-one Support Worker:

'The Preschool personally offered me a new dynamic in making a real positive difference to our "little people". The on-hand support from my experienced colleagues and how to expand on specific character strengths, work upon attributes that require more development and motivate our attendees has been enlightening. Seeing the happy faces when starting and leaving the day gives an enormous sense of achievement and accomplishment, knowing you're truly making a difference.'

Lana is also a one-to-one Support Worker:

'Being in the company of staff, parents and children is a fun adventure every day. Whether it's sailing the high seas on a makeshift ship or going to the outdoor cafe to be served pretend meals by the children it's always fun playing and stimulating little minds. In supporting the child I work with, inclusion is such a huge part of what we do and aim for. Adapting to suit needs but including all children in the same activities and routines is so important, and something as a preschool I'm proud to say we do very well.'

Janine is our Play Worker:

'It's great to be part of such a supportive and dedicated team who are all enthusiastic and encouraging of one another. I enjoy my work especially because helping children to grow and become more confident is so fulfilling.'

Sara is our Healthy Food Coordinator – and she's written a poem...

My Fuel

*We wake up each day
Off to preschool we go to play.
As we walk in the door,
'HELLO' all the teachers roar.
The table for breakfast is set,
Healthy choices we all get.*

*Sara tells us stories about fuel,
With a person, a car and just one rule...
That we learn how breakfast is the key,
To us staying well, happy and healthy.
Next is snack, then lunch and at home tea,
We learn at preschool how to look after ME.*



We hope this gives you a little insight into what it's like to be in our Preschool day to day.

- Get in touch with Imogen on **07765 887868** or Chris on **07936 006381** or visit **www.clophillpreschool.co.uk**



St Mary's School News

What we've been up to...

Our Year 3 and 4 children recently visited Milton Keynes Museum as part of this term's Victorian topic. It was the first time the school had visited and the children, who dressed up as Victorians, really enjoyed the experience. We sent our Year 4 children to NOAH weighed down with the 'Harvest produce' of tinned and dry goods kindly donated by our parents along with with good-quality second-hand children's clothes (see Vaughan Wilton's report below). The school also enjoyed our Harvest Service in Church, while our choir enjoyed their annual trip to Beverley Court to sing Harvest songs and look forward to visiting again at Christmas.



Coming up in school...

November and December are always chaotic in school and it's a struggle to fit everything in! By the time Spotlight comes out we will have had our Fireworks Night. Then later in November, on the 23rd, the children in school who play an instrument will be attending our Tea Time Concert, which gives them the opportunity to play to an audience. Into December and we have our Christmas play performed for the over-65s in the village on the 5th. The whole school, apart from Nursery, are going to watch Dick Whittington during December and, of course, the most exciting of all...Father Christmas hopes to visit school on the 14th and 15th! We look forward to finishing the term off peacefully in Church on 16th December with our School Nativity Service.

Our values for November/December are *Compassion & Forgiveness*

'Compassion' and 'sympathy' have much in common but both are stronger in meaning than simply 'feeling sorry for' someone. The words have their roots in the idea of putting yourself in someone else's shoes and experiencing what they experience. This leads to a desire to do something. It's not about 'doing good' or simply 'remembering those less fortunate than ourselves'.

Compassion requires an act of imagination and humility to share in the lives of others.

We'll be helping the children learn about this through imagining what it might be like in someone else's position and thinking about what we might be able to do in support of this.

You may wish to help your child think about compassion when you share stories or experiences – you could discuss people's actions, what led them to behave in a certain way, how they may have affected others, how it might have made them feel and how they might do things differently. You may wish to think of people in need of a friend and put things in place to help and support them.

Macmillan Coffee Morning

Mrs Jones would like to thank all those pupils and parents for supporting her Macmillan Coffee morning. With your support, and a little input at the morning coffee event, a **fantastic £302.88 was raised**. Special thanks also go to parents who contributed cakes to the sale.

Jeans4Genes

The children **raised £119 this year** so a great effort as always – thank you.

St Mary's School Harvest Collection

This year in school we thought about our Harvest Festival and particularly those people who aren't as fortunate as ourselves. Traditionally at Harvest we collect produce to represent all of the food that God has given us to enjoy. This year we went a step further and collected children's clothes that could be recycled to raise money to help the homeless. The charity we support is NOAH, which supports the homeless and those in need in Luton, Bedford and the surrounding area.

The food we donated will be used to provide meals at NOAH's day centre – where Rob, our guide on the day we visited, told us that the most popular lunch with visitors was a roast and apple crumble. The children's clothes that were collected in school will be sold in NOAH's shops. We had fun in school with a fashion show explaining how the clothes are recycled. ***Did you know that each year clothes that weight the equivalent of 75 Indian elephants are put in landfill*** – which if sold would raise £140 million! We hope our efforts will make a difference to lots of people's lives and to the environment, too. ***Vaughan Wilton***



School Admissions 2017

If you have a child requiring a place either in Reception for September 2017 or Middle School September 2017, you can now apply online at **www.centralbedfordshire.gov.uk/school/admissions**

The deadline for applications for lower, primary and middle school places is 15 Jan 2017.

If you're unable to apply online, please contact Sharon to get a paper copy application form.

Acorn Nursery News

Acorn didn't attend the Harvest Festival in Church but instead we learnt about how the combine harvester cuts the wheat to make flour that can then be made into bread rolls. We also made hedgehogs and squirrels using leaves that had fallen from the trees and the children enjoyed an autumn walk, finding lots of conkers that they then had fun with rolling down tubes.



In the garden the children especially enjoyed the mud kitchen with its mud, porridge oats, rice, rain water, grass, stones and whatever else they could find in the garden. We also made our own slime, seeing how far it stretched and whose could stretch the most!

We started our theme of 'When I grow up', talking about occupations using familiar characters such as Fireman Sam and Postman Pat. We're looking forward to visits from the Police and Firefighters and from Mrs Bingley, too. And of course we'll soon be preparing for Christmas –making cards and learning our Christmas Play ready to show to the parents at the end of term, as well as all the other festive activities we have planned.



Bedfordshire
Cambridgeshire
Northamptonshire

QUIZ NIGHT

Friday, November 25th, Maulden
Village Hall
7.15pm for a 7.30pm start

Join the Wildlife Trust local group and the Greensand Trust for a fun evening and a bit of a challenge. Pit your wits and see who'll emerge victorious.

Teams of four to six. We can match people to teams if needed.

Fish supper* and a glass of wine (or juice or beer). £10 per person.

Come along for a fun evening and help
support local wildlife activities.

[*Vegetarian option available, please request at time of booking.]

Open to all, but please reserve as space is limited.

Email flitvale.info@gmail.com or ring Ann on
07890 347327 between 6pm and 8pm

Flittabus needs YOU!

Volunteer drivers needed!



Driving a Flittabus can be fun; it's also very worthwhile.

We have 3 buses and 11 routes driven (and managed) by over 30 volunteers to provide scheduled services around Central Bedfordshire, helping many elderly people to remain independent.

If you can spare just one or two half days a month we'd like to hear from you.

Why not come for a trial drive and see if you like it? Full support and training will be provided. To learn more please contact *Chris Tarmu* on **01525 861940**.

Note: New drivers need to be under the age of 67

Helpline for bus information 07960 388 111

Clophill & District Flower Club



We always have very good demonstrations at our club, but sometimes we have great ones – and Thursday 6th October was one of them. Theresa Rodrigues, who was born in Malaysia and moved to the UK, wowed us with her demonstration **‘Celebrations in Malaysia’**. A double Gold winner at Chelsea in 2015 and 2016, her reputation preceded her and we were delighted that she could accept our invitation to come to our club.

Theresa’s designs depicted six celebrations: Chinese New Year, the Dragon Boat Race, Hindu Peacock Festival, Harvest Festival (Asian style), a Malay Wedding and Birthdays/Anniversaries.

It was a delight to watch Theresa producing such stunning arrangements. Never have we seen so many different orchids on one stage at the same time – gold, pale dusty pink, deep purple, white and lemon... ladies in the audience couldn’t wait to see if their raffle tickets would get them a prize at the end of the night.

Whilst Theresa worked she told us many interesting and comical stories about her life in Malaysia and the various



customs and traditions which were depicted in her designs.

The profusion of tropical foliage and additional flowers such as anthuriums, large-headed red roses, gladioli in pink and lemon, alstromeria and gerberas enhanced each design completely. Theresa’s English dry sense of humour was also the perfect accompaniment as she created her masterpieces. *Joan Palmer, Club Secretary*

• On 1st December, our favourite member and demonstrator, Doug Howard, is bringing our Ruby celebrations to a close with **‘Sparkling Christmas Memories’**. Tickets are available now from *Gillian Hill* on 01582 860539. www.clophillflowerclub.com



Christine's quick 'n' easy recipe



Pear & Chocolate 'Tatin'

INGREDIENTS Serves 8-10 people

- 4 ripe pears
- 225g sifted self-raising flour
- 225g caster sugar
- 110g softened unsalted butter
- ¼ tsp grated nutmeg
- ¼ tsp cinnamon
- 50g cocoa powder
- 150ml sour cream
- 2 large free range eggs at room temp
- knob of butter for the cake tin



1. Pre-heat the oven to 180°.
2. Thoroughly butter a 30cm sandwich tin.
3. Peel, de-core and thinly slice the pears then place the slices on the bottom of the buttered sandwich tin in a circular fashion.
4. Blend together the unsalted butter and caster sugar. Mix in the eggs then add the flour, cocoa powder and spices. Finally add in the sour cream and blend well together.
5. Pour the cake mixture on top of the sliced pears.
6. Bake in the oven for approx 30 minutes or until the sponge springs back from your touch.
7. Allow to cool for about 15 minutes, then turn the sponge out onto a serving plate so that the pears are on the top.
8. Serve with double cream.

What's on in and around Clophill

NOVEMBER



Saturday 12th

Beetle Drive Clophill Methodist Church, 6.30pm.

See this issue for full details.



Saturday 12th

Gastroquiz Silsoe Village Hall, 7.30pm. *See this issue for ticket details.*



Thursday 24th to Saturday 26th

'Going Postal' by the Westoning Players 7.30pm, Westoning Village Hall.

See this issue for full details.



Friday 25th

Quiz night Maulden Village Hall, 7.15pm. *See this issue for full details.*

DECEMBER



Saturday 3rd

Christmas Wreath-Making 10.30am-1.30pm, Clophill Eco Lodges.

See poster in this issue for full details.



Sunday 4th

Christmas Craft Market & Cafe 1pm-5pm, Clophill Eco Lodges.

See poster in this issue for full details.



Sunday 4th

Christingle Service 3.30pm, St Mary's Church, Clophill.

Collection in aid of the Children's Society. All welcome.

On throughout the month...

Wednesdays...

- **'Tea and Chat'** 10.30am-noon, Clophill Methodist Church Schoolroom
- **Zumba Toning** 8pm-9pm, Clophill Village Hall

Fridays...

- **Clophill Toddler Group** Clophill Village Hall, 10am-noon. See 'Village Groups' for contact details

One Saturday a month...

- **Messy Church** 4pm-6pm, Clophill Methodist Church, 19 November; 17 December. All-age craft activities, worship and a meal for all the family. No fixed charge, donations welcome, children must be accompanied by an adult. See 'Village Groups' for contact details.

If you have any diary dates that you would like included on this page, please email clophillspotlight1@hotmail.co.uk

CLOPHILL TODDLER GROUP

Understanding the importance of a child's play

LOTS OF TOYS, SPACE AND FRIENDS
FOR BABIES AND TODDLERS UNDER 3

FRIDAYS 10am – 11.30am at the Village Hall
See 'Village Groups' for contact details



Clophill Parish Council

Notes from the Parish Council meeting held on 25th October

These notes are a resume only. Official minutes are available on the internet and notice boards. All official correspondence should be sent to the parish clerk and not individual councillors.

David Myers

Clophill Parish Council was saddened to learn of the death of Mr David Myers at the age of 81. David served on the Parish Council for almost 20 years, including a period as Chairman. He was a pillar of the Clophill community and was the founder of our successful and much appreciated Care in the Community scheme. He also served as a School Governor.

With his passion for the outdoors, David represented Clophill as the Footpath Officer, ensuring that our public footpaths and bridleways were maintained and open for the many walkers in the village.

Our thoughts and sympathies go out to his wife Janet and family.

Parish Council Clerk

James Stirling was appointed as the Parish Council's new clerk. He has a dedicated telephone number (01462 887226) and if he is not in please leave a message on his answerphone and he will respond as soon as possible.

The Parish Council thanks the retiring clerk Lyn Lyman for her many years of service to the village and council and wishes her well for the future. We look forward to working closely together with James for the betterment of our community.

Neighbourhood Watch (NHW)

NHW is nearly ready to be up and running. All street coordinators that volunteered are just about to be registered and a large amount of Clophill is covered. Clophill coordinator Helen Rodell is still looking for coordinators for the following streets; Kiln Lane, Readshill, Tanqueray Ave, Goodwood Close, Back St, Castle Hill Ct and Shefford Rd.

Once the registration is complete we can apply for road signs etc and hopefully decrease the undesirable behaviour that we are experiencing.

If anybody from the roads we have highlighted is interested in getting involved please don't hesitate to contact **Helen** on **07974 407834**.



Warren Lane

At the time of writing it has been one month since there was last a car accident on Warren Lane. This seemingly unremarkable statement is actually a real positive – as the junction with the A507 has been a dangerous accident hotspot for years. We believe the recent new safety measures introduced in that area - thanks to pressure on CBC Highways from our Vice Chairman and Ward Councillor Paul Downing - have played a significant part in this milestone. We do advise villagers still take extra care when driving in that area.

Clophill Parish Council

Continued



Remembrance Day

Clophill Parish Council are contributing £50 to Royal British Legion for Remembrance Day. Remembrance Sunday falls on November 13th this year.

Clearing the Rec

Cllr Louise Hodge is looking for Clophill villagers who would like to help clear the hedge line/bank and undergrowth on the Rec. If anyone is interested in helping over the winter months contact Louise via email (louisehodgeclophillpc@gmail.com) or call **07900 696103**.

Planning

CB/TCA/1600630

Location: St Mary's Church

Proposal: Reduce height of a Holly Tree located on the boundary with Church Mews.

SUPPORT

CB/TCA/1600403

Location: 8 Mill Lane

Proposal: Remove dead Silver Birch. Reduce crown to Copper Beech (by 25%).

Reduce Poplar by 3 metres. Remove Cypress.

SUPPORT

CB/TCA/16/00366

Location: 28 Back Street

Proposal: Fell Silver Birch due to root encroachment into main drain.

SUPPORT

CB/TCA/16/00370

Location: 12B Back Street

Proposal: Fell a Cherry Tree that is obstructing the entrance to the drive.

SUPPORT

CB/16/04625/FULL

Location: 1a, High Street

Proposal: To build a one bed detached house. We have previously responded to this (and this application was approved) but after advice from the conservation officer the design was amended - alteration to the front porch and two small windows.

SUPPORT

CB/16/04480/FULL

Location: 82 High Street

Proposal: Erection of carport and wall etc. This will not impact of the village High Street. The car port is a single storey detached wooden structure.

SUPPORT

The next Parish Council meeting will take place in the village hall at 7.45pm on Tuesday 29th November with a surgery at 7.30pm

Parish Registers for November

1816	1916
Baptisms November 24 Joseph Willison (?) Susan Maddams	Baptisms November 12 Florence Irene Billington
Marriages November 21 Thomas\Armstrong (?) to Mary Summerfield (?) William R (?) to Dinah ?	Burials November ? Alice Jane Milligan, 72
1866	1966
Marriages November 3 William Doggett, 22, to Hannah Sutton, 19 November 11 Lawrence Chapman, 21, to Daisy Heathfield, 19 November 18 Richard Lincoln, 20, to Mary Cooper, 26	Baptisms November 6 Emma Louise Caves
Burials November 28 John Whittamore, 63	ST MARY'S CHURCH REGISTERS FOR OCTOBER Baptisms October 23 Annie Rose and Heidi Olive Caplan (twins) Funerals October 5 David Martin, 72 October 6 Ivy Roberts Service of Thanksgiving October 24 David Leslie Myers, 81

Village groups

Beverley Court	860920
Brownies	https://enquiryym.girlguiding.org.uk
Clophill Community Care	Duty Contact 07791 773705
Clophill Heritage Trust	Ali Bradbury 07894 710001
Clophill Parish Action	Ali Bradbury 07894 710001
Clophill St Mary's C of E Lower School & Nursery	Sharon Kempson 860206
Clophill Toddler Group	Caroline Daniels 07734 495348
Clophill United Charities	Gillian Hill 860539
Conservation Group	Brian Adams 862297
Flower Club	Gillian Hill 860539
Friends of the Cheshire Home	Sue Pearson 861110
Funzone After School Club	07903 167493
Greensands Community Choir	Luke Howard 07975 520085
Indoor Carpet Bowls	Tony Meredith 860754
Messy Church	Victoria Higgins 07920 568861
St Mary's PTA	victoriajhiggins@hotmail.co.uk
Scouts and Cubs	Julia Skelton 07774 993973
Tea and Chat	Ralph Rayner 403956
Tuesday Club	Anita Errick 860695
Village Hall Booking Secretary	Betty Hampson 860750
	Marilyn Browning 07821 643936

Useful numbers

Gas (Emergency)			0800 111999
Electricity (Emergency)			0800 7838838
Emergency Fire/Police/Ambulance			999
Water/Sewage (Anglian Water)			0845 7145145
Telephone	(Customer Services) 150	(Faults)	151
Highways Department (Central Bedfordshire Council)			0300 3008049
Benefits Agency (Bedford office)			01234 361500
Registrar's Office (Births/deaths/marriages)			0300 3008089
Rail (Enquiries)			0845 7484950
Buses 01234 262151	(Link A Ride) 01525 840511	(Flittabus)	01582 406561
Luton Airport			01582 405100
Swimming	(Flitwick) 01525 717744	(Robinson Pool)	01234 212479
LIBRARIES			
	Bedford	01234 350931	Amptill 01525 402278
	Barton	01582 881101	Flitwick 01525 715268

LOCAL GOVERNMENT

Central Beds Offices (Chicksands)			0300 300 8000
Mid-Beds MP		Nadine Dorries	01462 811992
Central Bedfordshire Councillors		Michael Blair	01525 404513
	Paul Duckett 07988 184061	Paul Downing	0300 300 8541
Clophill Parish Council		Peter Clarke	01525 861179
	(Clerk)	James Stirling	01462 887226

HOSPITALS

Bedford (North & South)	01234 355122	Admissions	01234 261150
		Appointments	01234 359012
Luton & Dunstable			0845 1270127

DOCTOR'S CLINICS

Amptill	(Houghton Close) 01525 300898	(Oliver Street)	01525 631395
		(Greensands)	01525 631390
Shefford	Enquiries 01462 818620	Appointments	01462 810034
Barton 01582 528700		Flitwick	01525 715300

POLICE

County Police HQ		Non Emergency	101
Amptill Station			01234 841212
Clophill Local Policing Team			101
			01234 842613

CHURCHES

St Mary's Parish Church		Liz Henman	01525 860108
St Francis RC Church, Shefford		Ian Gordon	01525 860875
Clophill Methodist Church		Jim Davies	01525 860829
Baptist Churches (Amptill) Doreen Gibbs 01525 862424		(Maulden) Ian Crawford	01525 634325
		(Shefford) Hazel Arnold	01462 812564

SCHOOLS

Clophill St Mary's C of E Lower School & Nursery (Headteacher Mrs K Bingley)		01525 860206
Harlington Upper School , Harlington		01525 755100
Preschool clophillpreschool@gmail.com	(Chris) 07936 006381 or (Imogen)	07765 887868
Redborne Upper School , Amptill		01525 404462
Robert Bloomfield Middle School , Shefford		01462 628800

Painter and Decorator

Call Chris : 07950714579

facebook: @christopherthepainter

email: chris.minihane@btinternet.com



do you want your home brightening up?

all interior & exterior work

no job too small!

free no obligation quote

25 years experience & fully insured

GREENSAND COMMUNITY CHOIR



Christmas Concert
rehearsals

military wives
Choirs
Chicksands
& Henlow



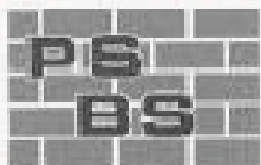
Come along and join us as we prepare for our Christmas Concert together with the Military Wives Choir of Chicksands and Henlow which will be in aid of Great Ormond Street Hospital.

The concert will take place at St. Mary's Church, Clophill on Saturday 10th December at 6.30 pm.

- the choir is open to anyone who wants to sing, aged 18 and above
- no experience necessary, no audition and no need to read music
- rehearsals on Monday evenings from 31st October onwards, 8 - 9.45pm
- venue: St. Mary's Church, Clophill

Ring 07975 520085 and let us know if you would like to come along. Have your first session free and see if you would like to join us regularly, or just enjoy learning some festive songs for this Christmas!

email: greensandcommunitychoir@gmail.com



PETER SHARPE

BUILDING SERVICES LTD

**Call us first for ALL your building works
and get reliability, quality & sensible prices.**

Domestic extensions

Design & build service

General building works, drives, patios

Carpentry, kitchen fitting, wall & floor tiling

Laminate flooring & hardwood flooring

Mini digger and driver hire

Electrical installations including
Building Regulation part P certification

Roofing repairs carried out

Conservatories, UPVC windows

‘BEDFORDSHIRE’S PROFESSIONAL BUILDER’

01525 872762 / 07850 803021

email: psbsltd@btconnect.com

A L & G ABBOTT

Funeral Directors

~ Established 1832 ~

WITH YOU WHEN IT MATTERS MOST

An independent family business continuing to
provide a caring & professional service to Bedford,
Kempston
& the surrounding villages.

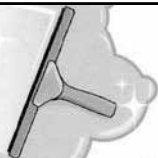
- 24 Hour Personal Service
- Pre-Paid Funeral Plans
- Private Chapels of Rest
- Green Burials
- Home Arrangements
- Civil Services Available



T 01234 843222

www.abbott-funerals.co.uk support@abbott-funerals.co.uk

150 BEDFORD ROAD, KEMPSTON, BEDFORDSHIRE, MK42 8BH



Time to Shine

Peter Hendry
**Traditional
Window Cleaner**

07590599381

phendry8@hotmail.co.uk



Compu-Doc

PC / laptop crisis ?

01525-402227

Call the Doc for -

Hardware & software

Diagnosis & treatment

john.stafford@compu-doc.co.uk

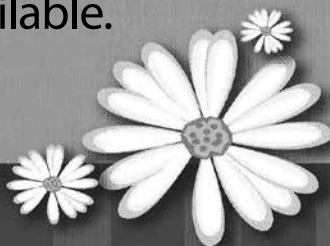
Daisy Cooper

Spring cleans, one off cleans and
moving home cleans all available.

Daisycooper22@hotmail.co.uk

Please call 07913 332914

Keeping your home as fresh as a Daisy



Telephone

**01525
860526**

The Stone Jug

A Free House

BACK STREET, CLOPHILL

The start of 2016 saw the 'matriarch' celebrate a BIG birthday. Despite her (more) senior years, she is still quite partial to a 'Jagerbomb' or two and a good old knees up (even if the knees don't get so far up now!). Life is what you make it, so live it to the full and let 'The Jug' be part of your life in 2016.

- 5 real ales, including 2 guest pumps that change frequently (see our Facebook page for details)
- selection of wines and Prosecco by the glass – or even better, by the bottle
- home-cooked lunches Tues-Sat, 12pm-2pm



REMEMBER OUR MOTTO

"A VISIT TO THE JUG IS BETTER THAN GOING TO A PUB"

CHEERS JOYCE & VIKKI

www.stonejug.co.uk

www.facebook.com/thestonejugclophill



Matthew Dibden
- Architectural Design
- Planning Applications
- Building Regs

Office: **01525 860186**

Mobile: **07972 197754**

Email: **matt@daniel-design.co.uk**



www.daniel-design.co.uk



Tel: 07966 665654

Web: www.emtacademy.co.uk
Email: carrie@emtacademy.co.uk



EMT Academy – Emergency Medical Training is a Clophill based First Aid Training company

All EMT Academy trainers have worked professionally as Emergency Medical Technicians, Paramedics or Police Firearms Medics so we can bring real life experience and scenarios to your course.

Courses Available

- First Aid at Work
- First Aid at Work Requalification
- Emergency First Aid at Work
- Annual Refresher
- Automated External Defibrillator
- Family First Aid
- Paediatric First Aid
- Basic Life Support
- Bespoke First Aid*

Our feedback shows that the one-to-one practical skills taught by our instructors ensure students feel confident to deal with any unexpected medical emergency.

If you are a parent, grandparent, babysitter, childminder, carer, employer or an organisation* e.g. sports clubs, Guides/Scouts, equestrian, please contact us, we will be happy to discuss which course will best suit your needs.

Linda Allsop

PHYSIOTHERAPY



Chartered
Physiotherapist
with over 30 years
experience in both
the Private Sector
and the NHS.

01462 711978 | 07989 257026

www.linda-allsop-physio.co.uk

SAVAGE ACCOUNTANTS

- Accountants who know how businesses run
- Qualified Chartered Accountant and Chartered Tax Advisor
- Friendly Accountants who listen to your needs
- A wide range of services offered

Call

01525 552250



for a FREE initial meeting

www.savageaccountants.co.uk

Company Registration Number: 09214570
Cure your tax headaches

PERSONAL DOG WALKER

£10 per hour
£6 per half hour

- First Aid Certified
- Insured



Text or call Corrane on

07576 473373 or **01525 630740**



Corrane's personal dog walking

SJ TAX & ACCOUNTING

QUALIFIED ACCOUNTANT

Professional friendly services,
Tax advice, Free initial consultation,
Sole trades, Ltd companies,
Bookkeeping, Payroll,
CIS, VAT & Tax

DOWNLOAD OUR FREE APP
"SJ TAX LTD"

contains lots of free tax info and
a free income and expenses tracker

e: sally@sjtax.co.uk

t: 01234 831997

m: 07899 808592

K9 trendi grooming solutions



Qualified, caring, professional,
mother and daughter grooming team

**FIRST GROOM 10% OFF PLUS 10% OFF
ANY PURCHASE OF DOG FOOD/TREATS**

WITH THIS ADVERT

Visit our website

www.k9trendi.chicksandspetservice.co.uk

find us on Facebook:- facebook.com/k9trendi

Or give us a call:-

Tracey 07711 563000 Lisa 07894 582781

**SAFE LOCAL COLLECTIONS AND DELIVERY OF
YOUR K9 COMPANION AVAILABLE**

Visit us at **Chapel Feeds**

**Pet, animal feed
and birdseed**

suppliers

**Home delivery
available**

**Unit 6 Woodside
Farm, Clophill Road
Maulden, MK45 2AE**

**Or call Jill on
01525 860150**

ARCHITECTURAL DRAWINGS AND BUILDING DESIGN SERVICES

Professional Architectural design services provided for all types
of private residential building projects including extensions, loft/
garage conversions, garages and outbuildings through to new build
dwellings with all necessary council approvals obtained.

For free estimates and advice contact Steve
Coates on Flitwick 01525 862457 or 07960 215053.

stevecoates72@gmail.com

S & S Coates Surveying & Design, Unit 4 The Courtyard,
r/o 13 High St, Clophill, MK45 4AB.



chartered building engineer



Member National Building

Mobile Hairdresser

Reasonable prices

Reduced price for 2 or more
clients per household

Senior Citizens discount

Text or call Corrane on

07576 473373

01525 630740



...because everyone deserves to be pampered

Hot stone and Swedish massage
Indian head massage
Pregnancy massage
Maniures & pedicures (Shellac gels available)
Waxing
Eye treatments
Facials

Affordably priced... all with the convenience and
comfort of being in your own home

Gift vouchers available

For more information and to make
an appointment please contact:

Elizabeth Warfield (member of BABTAC)

Tel: 07816 789071

Email: lizziewarfield@hotmail.co.uk



Tel: 01525 862416

www.thebluecat.net coming soon!

Find us on Facebook @thebluecatcattery
or email us at enquiries@thebluecat.net

Now open! The Bluecat is a brand new,
luxury cattery set in the quiet area of
Jacques Lane in Claphill. With just 14
cat chalets, we have time to fuss, pamper
and play with your cat to its heart's
content whilst in our care.

Please call for further information.

Misty Double Glazing?

Over 30
Years
experience.
FREE
Quotes

Over 30
Years
experience.
FREE
Quotes

**KEEP YOUR WINDOW FRAMES...
... WE JUST REPLACE THE GLASS!**

• UPVC • Aluminium • Or Wood

Because we replace just the glass the repair is a
Fraction of the cost of a complete replacement window.

BEFORE



AFTER



mistydoublinglazing.co.uk
QUALITY GLAZING SERVICES

01525 876808

WE ALSO REPLACE BROKEN...

• Glass • Handles • Hinges & Locks
AND REPAIR...Patio Doors & Conservatories!

Clophill Preschool

Welcoming children
from **2 years** of age

in the fantastic setting of Clophill Village Hall. Our highly qualified team is led by a qualified Teacher and a Nursery Nurse. We provide a safe, secure and stimulating environment with brilliant ideas and activities that open the doors to learning and beyond. Come and see what your 2, 3 and 4 year olds can learn with us, our door is always open.

Opening times:

Monday, Wednesday, Thursday 9.15 - 2.15; Tuesday 9.15 - 1.15

clophillpreschool@gmail.com

www.clophillpreschool.co.uk

Imogen 07765 887868 or Chris 07936 006381



Welcome to Clophill St Mary's C of E Lower School and Nursery

CLOPHILL
St Mary's
C of E SCHOOL

St Mary's is a Voluntary Aided Church of England Lower School based in the village of Clophill. We are a small friendly village school with close links to the local community, taking children aged from 2 years 7 months to 9 years.

St. Mary's is a Values Based school which provides children with a framework for living, tightly woven into the positive Christian ethos of the school.

Our vision at St Mary's is to provide a secure, inclusive and stimulating child centred environment, where all children are inspired to achieve their full potential. Our aim is that every child will develop as a caring, respectful member of the community and society as a whole. We will achieve this through a creative curriculum based on our values, reflecting the Christian ethos of our school.

**Please call us on 01525 860206
to arrange a visit**



High Street, Clophill, Bedfordshire, MK45 4BE
Tel: 01525 860206 stmarysclophill@cbc.beds.sch.uk www.stmaryslower.info



The Happy Place.co.uk

On the Green beside the Post Office every Friday
3.30-7.30pm

We are your local mobile fish and chip van, we have been parked on the green every Friday for the past 6 years.

We serve only the highest quality produce, cooked fresh to order and served to you by our friendly staff.

Why don't you pop down and come and
Try Our Fry!

To avoid waiting in the cold, give us a call to

place your order on: 07833 786108

A big thank you to all our customers who have loyally supported us over the past couple of years.

Clophill

Mace

Post Office & Stores

- Fresh bread & dairy produce
- Newspapers & magazines
- Confectionery & tobacco
- Wines, beers & spirits
- Cards & stationery
- Household goods
- Baby products
- Toys & gifts
- Dry cleaning
- Photocopying
- Shoe repairs
- Post office counter services



Shop Hours

Mon - Sat 7.30 - 7.30 | Sun 8.00 - 1.00

Post Office Hours

Mon, Tues, Wed, Fri 9.00 - 1.00, 2.00 - 5.30 | Thu, Sat 9.00 - 1.00

THE GREEN, CLOPHILL 01525 860988

Proprietors:
Deepak & Daksha Chandarana

Stephens

Your local removals & storage company



Specialising in house removals and office relocations in the UK, Europe and Overseas.

REMOVALS

Local, National, International

STORAGE

Secure & Containerised

PACKING

Full Or Part & Materials

LONG ESTABLISHED REMOVAL COMPANY OFFERING A PROFESSIONAL, FRIENDLY SERVICE

COMPREHENSIVE INSURANCE • FREE ESTIMATES

01582 572967

STUART DREW ELECTRICAL SERVICES

MEMBER OF THE ECA

PART P CERTIFIED QUALIFIED TO 17TH EDITION

From extra lights & sockets, to re-wires. Fault finding and electrical safety certification. For a professional, courteous service with free estimates & all work guaranteed, please call me

29 Lincoln Way
Harlington
Beds
LU5 6NG

**Fully qualified & insured
30 years experience**

Telephone:
01525 875965
07941 812662

ROGER STOREY

YOUR LOCAL PAINTER AND DECORATOR

Friendly and Reliable Service

Many Years Experience

Please phone: **01525 861253** or **07800 777615**

Based near Toddington, Bedfordshire.

We rescue, rehabilitate & re-home stray & abandoned cats.

We have lots of beautiful cats waiting for loving homes.

Ring the shelter on 01525 875993

or Sue on 01582 650167 to arrange a visit.



Registered Charity No. 1098984

Visit our website @www.straycatrescue.org.uk



GARDEN DOCTOR

Rob McLeod
Pruning Specialist

Professional, Local, Experienced

- * All tree and hedge work undertaken
- * High standard of work
- * Rubbish cleared from site
- * Free Quotations
- * Local, reliable service you can trust

Tel: 07763 239340 or 01525 861568
email: garden.doctor@btinternet.com

Call the Garden Doctor and bring Good Health to your Garden



Tree Surgery & Removal
Shrubs & Fruit Trees
Pruning & Spraying
Fully certificated and insured

SHEFFORD BUILDING SUPPLIES LTD

44 HIGH STREET, SHEFFORD, BEDS

Key Cutting
Tools
Timber
Sheet Materials
Gardening
Paint



Gas
Electrical
Plumbing
Sand & Cement
Domestic
Ironmongery

Tel: 01462 813381

TRULY AN ALADDIN'S CAVE

Free delivery

AIMS

Tim Kemp BA FCA
Top Barn Rectory Road
Steppingly MK45 5AT

TEL/FAX : 01525 717141
MOBILE : 07900 823 012
www.aims.co.uk
e-mail: timk@aims.co.uk

- ◆ **Professional** service providing for all your accounting and tax needs
- ◆ **Practical** advice based on 20 years experience in **running** businesses
- ◆ **Personal** approach with fixed fees relevant to the work **you** need
- ◆ **Friendly, local** accountant supporting the community for over 20 years

Please call for a free, no-obligation initial meeting

ACCOUNTANTS FOR *business*

Hills-Howson Financial Services

Financial adviser appointments available in your home or our office

The Old Post Office
53 High Street
Claphill
Beds MK45 4BE

Tel: 01525 861803
www.hills-howson.co.uk
hills.howson@btconnect.com

Including:-

Investments

Pensions

Protection

Annuities



W&H PEACOCK
AUCTIONEERS & VALUERS

Auction Sales and Valuations

Valuation, collection & auction
service of individual items through
to complete property clearances.

Call for a free no obligation
collection quote or email
info@peacockauction.co.uk

SALE ENTRIES NOW INVITED



Bedford Auction Centre, 26 Newnham Street, Bedford MK40 3JR

01234 266 366 peacockauction.co.uk

THE COMPUTER MAN



Got a problem with your computer and don't know what
to do? Suffering with a virus or spam?

Don't hesitate! Ring your local computer expert

**Remote repairs or home visits
(Day, evening & weekend)**

**Lap top/desk top loan
(Free pick up & drop off in local area)**

Comprehensive health check from £35 (**Special Offer** £35 - normally £40)
Refurbished fl at screen available from £15 • Refurbished base units available from £99



Contact Stephen Amos
07976 718567
the.computerman@ntlworld.com





rincon tuition - Spanish & Maths

Expand your knowledge. Boost your confidence

01525 860743

Exam techniques and preparation. Revision and practice papers: SATs and GCSE

Spanish for business or pleasure, all levels. GCSE & A-levels

Skills development: conversation, reading and writing

Maths: Boost your confidence and abilities

KS1, KS2, KS3, SATs and GCSE practice papers

DBS checked and references - Reasonable rates

01525 860743 - 07952 667814 rincontuition@aol.com



LIZZIE BROWN PET CARE & HORSE GROOM SERVICES

**DOG WALKING
PET POP-IN & SITTING
HOUSE SITTING
FREELANCE GROOM***

(*BTEC Equine Management)



Lizzie Brown 07500 989 700 / 01525 862459

Reliable

Friendly

Local service

Short notice available (no contract commitments)

Insured

Quality references available

*CRB checked**

*(Disclosure & Barring Service)

Baths, Toilets &
Showers
Sinks and Taps
Guttering
Leaks and Burst Pipes
Drainage
Handyman jobs also



Silsoe based
No call out fee – free estimates
Fully insured and guaranteed
No job too small
07720 723653 01525 864859
info@betaplumbing.co.uk
www.betaplumbing.co.uk

Foot Health Practitioner

Corns, Hard Skin, Verruca, Fungal Nail Infection,
In-growing Toe Nails, Diabetic Foot Care, Athlete's Foot,
Pedicure, General Nail Cutting etc.

In the comfort of your home or at my clinic

Ann Gibbons MCFHP, MBAFHP.

Competitive Rates

Tel: 01462 813252 Mob: 07872 315763

Web: www.shamrockclinic.co.uk

For opening hours and other details please refer to my website



Poppins Chimneys

**Chimneys Swept
Wood and Multifuel Stove
Installation & Liners**

Great Service - Great Price!



01525 860424 or 07858 688785
mark@poppinschimneys.co.uk



We'll get you up and running!

We offer the very best physiotherapy care from a friendly approachable team of nine highly trained Chartered Physiotherapists all members of the Health Professionals Council

Expert treatment including:

Neck/Back/Hand and Tennis Elbow Pain
Headaches/Migraine/Sciatica
Incontinence/Pelvic/SIJ/SPD/Pregnancy Back Pain
Sprains/Strains/Torn Ligaments
Whiplash/RSI/Osteoporosis/Sports Injuries

Specialist Physiotherapists:

Neurological, Paediatric, Vertigo and Dizziness

We also offer complementary treatments:

Acupuncture, Reflexology, Massage, Indian Head Massage,
Chinese Herbalist, Lymphatic Drainage and Pumps



Tel: 01525 720882 www.chartered-physiotherapy.co.uk Email: amphillphysio@btconnect.com

7 Station Square, Flitwick, MK45 1DP

E.T. Accountancy Services

Experienced Chartered Accountant and Chartered Tax Adviser based in Clophill providing a full range of accountancy and taxation services to businesses and private individuals.

To arrange a free initial consultation please telephone me on
01525 590465 or email emma@et-accountancy.co.uk

Chartered Accountant and Chartered Tax Adviser

Emma Thoulass FCA CTA www.et-accountancy.co.uk 01525 590465

Chapman & Kirby Heating

Gas, Plumbing & Heating Installations

Gas Safe Registered

Boiler Servicing & Maintenance



Call us now

Tel: 01525 861255 Mob: 07831 132308

Email: info@chapmanandkirbyheating.co.uk

1C, Old Silsoe Road, Clophill, Beds., MK45 4AR

NEVILLE

FUNERAL SERVICE

Established 1875

Reassurance when you need it most

Serving the people of Bedfordshire since 1875



Neville Funeral Service

inc. George Squire & Sons since 1976

24 Clifton Road

Shefford SG17 5AE

t: 01462 813258

e: shefford@nevillefuneralservice.com



Neville Funeral Service

The Old Church Flitwick Road

Amptill MK45 2NT

t: 01525 406132

e: amptill@nevillefuneralservice.com



www.nevillefuneralservice.com

The UK's No.1 Lawn Care Company



- Scarification
- Aeration
- Lawn Fertilising
- Weed Control
- Moss Control
- Water Conserver
- Pest and Disease Management



GreenThumb has a variety of treatment programmes to suit your pocket that include our traditional 'pay-as-you-go' service and our new, pay monthly, Direct Debit programmes, where you can save up to 25% annually.

Our treatments start from £5 per month, that's cheaper than D-I-Y and without the hassle!

Call your local branch today for a FREE lawn analysis and no obligation quote.

0800 0111 222

GreenThumb
LAWN TREATMENT SERVICE



Find us online at: www.greenthumb.co.uk



- Suppliers of traditional and modern equipment
- Working whirlpool & spa baths, power & steam shower systems on display
- Over 40 settings on display
- Complete installation service if required
- Personal friendly service from a family run business
- Wall and floor tiles
- Accessories
- Mirrors
- Bathroom furniture
- Heated towel rails
- Saunas
- Bathroom cabinets

SHEFFORD 01462 627002

www.bathroomvogue.com

Unit 4A, Shefford Industrial Park, St Francis Way, Shefford SG17 5DZ



Woburn Country Foods

Online - Catering - Retail Butcher

High Quality Local Meat

- 21 Day Matured Beef -
- Farm Assured Chicken -
- Bedfordshire Lamb -
- Bedfordshire Pork -

Farm Shop

**West End Farm, Haynes West End
Bedford, MK45 3RA**

Order Online & Collect In Store
www.woburncountryfoods.com



LOCAL ALLOY WHEEL REFURBISHMENT



Tel:
01525
860069

Alloy Wheel Repairs

Diamond Cut Alloy Wheels Repaired On Site

Powder Coat Primers & Lacquers

Fast Turnaround Alloy Wheel Welding

Tyres At Competitive Prices

NEW for 2015 - 4 Wheel Alignment Service

www.mintalloys.co.uk

CTP CONSTRUCTION

Local Building Company

Established for over 25 years

U.K. Trades Approved

No job too small - Competitive prices

Free estimates given on all Building Work

Tel: Silsoe 01525 860105

www.ctpconstruction.co.uk



Stephen's Plants

at Maulden Garden Centre on the A507 bypass (near A6 / Clophill)



for your

Seasonal and hardy plants
Vegetable seeds and plants
Hanging baskets and tubs
plus composts and fertilisers
all with EXPERT ADVICE *and a smile*

Telephone: 01525 861696

Nature is our theme.....

Boarding Dogs & Cats
Day Boarding - Dogs
'Nature' Food Shop
plus
On site Grooming - Dogs
Off site Walking - Dogs

Conifer
Kennels & Cattery

01525 860339

www.coniferkennels.co.uk **facebook**

TRIMENT ENHANCED raw diet formula

natures menu REAL FOOD PET'S LOVE

frozys

Green Pantry

ARDEN GRANGE

APPROVED STOCKIST: Conifer Kennels & Cattery, The Causeway, Clophill, Beds. MK45 4BA

Wrest Park Day Nursery, Silsoe

Come and visit our beautiful nursery and pre-school based within the grounds of Wrest Park. We offer care for 0-5 year olds 8am to 6pm Monday to Friday for 51 weeks of the year.

We were Rated 'Good' by Ofsted in May 2014 and they commented that 'Staff are enthusiastic, model good social behaviour to children and offer frequent praise' (Ofsted 2014).

We offer all day sessions, am or pm sessions or a 9-3 'school day' session. We accept childcare vouchers and 2,3 and 4 year old funding.

Please call us on 01525 861743 or info@wrestparkdaynursery.co.uk
www.wrestparkdaynursery.co.uk



BURGLAR ALARMS

New Alarms Fitted or Upgrade Existing Alarms

BURGLAR ALARMS

We fit New Alarms - Wired or Wireless Systems
We can service and maintain your existing alarm

CCTV

We fit high quality systems to maximise your security.
Access your CCTV via the internet or mobile.

DOOR ENTRY

We fit a range of quality video and audio intercoms
to suit your needs.

*We are a family run business with over 35 years
experience in home security and crime prevention.*



www.maximumsecuritysystems.co.uk

Contact:

01582 864138 / 07746 111520

For a free quote and consultation

Root 'n Branch

Your Local Friendly & Reliable Gardener

All aspects of Garden Maintenance undertaken
• PRUNING • MOWING • WEEDING • PLANTING • HEDGING

Southfields, Shefford
email: whooley@hotmail.co.uk

Tel: 07771 537385

Public Liability
Insured

ADAM IN YOUR GARDEN

**TREE SURGERY, HEDGE TRIMMING,
TURFING, FENCE MAINTENANCE,
DECKING, PATIO CLEANING**



Qualified, Fully Insured, Competitive Rates
Free Estimates

TEL: 01582 518954 MOB: 07828 490360

Web Site: www.adaminyourgarden.co.uk

ANDREW BAKER WINDOWS

9 SHEFFORD ROAD
CLOPHILL BEDS
MK45 4BT

SPECIALISING IN UPVC WINDOWS,
DOORS, CONSERVATORIES,
FASCIA, SOFFITS, GUTTERS AND
CLADDING. ALSO AVAILABLE FOR CARPENTRY
WORK. NO JOB TOO SMALL OR LARGE.

20 Years experience.
Free local quotes.

FENSA

Fensa Registered
FIVE YEAR GUARANTEE

Contact Andrew: **01525862804 / 07825017855**

Email: **abakerwindows@gmail.com**

HIGH QUALITY CARPET, UPHOLSTERY, RUG AND LEATHER SUITE CLEANING

Ring Steve

(Barton) **01582 882620**

(Mobile) **07769 042523**

Email: bedscarpetcleaners@gmail.com

www.bedscarpetcleaners.co.uk

McCaffrey

Your central resource for residential
build, refurbishment and maintenance



General Building Works
Extensions
Internal Refurbishment/Alterations
Garage Conversions
Loft Conversions

Brickwork
Carpentry
Painting & Decorating
Purpose made Joinery
Bi - Folding Door Applications

Plumbing and Heating
Electrical installations
UPVC/Timber Windows
UPVC Conservatories

T. 01525 861041

E. info@mccaffreybuild.co.uk

W. www.mccaffreybuild.co.uk



WEC, BUILDING 52, WREST PARK,
SILSOE, BEDFORDSHIRE, MK45 4HS

COMPANY NUMBER: 7240869

McCAFFREY BUILDING CONTRACTORS LTD



OSTEOPATHY

Deborah Beare BSc (Hons) Ost.
Registered Osteopath

**The Clophill Centre for
Complementary Therapy**
Clophill Fruit Farm,
Shefford Road
Clophill

- Cranial & Structural Osteopathy
- Neck & Low Back Pain
- Infant Feeding & Sleeping Problems
- Muscle Tension
- Sports Injuries
- Arthritic aches & pains
- Headaches

To book appointments call: **07969 921112**

Washing Machines Dishwashers Dryers Electric Ovens Repairs Servicing Sales



A local family business offering
a quality service at a competitive price
Est. 1981

Tel: CLOPHILL 860148
or Tim Downing direct on 07969 545 276

A member of the White Goods Trade Association
Fully Insured

MB

ACCOUNTING SERVICES

accounting solutions for the

Self-Employed and ***Small Business***

including

Bookkeeping • Accounts • Tax returns • Cash flows

For a totally confidential service at **very competitive rates** contact
Richard Fairholm T: 01525 861087 M: 07714189994 E: mbaccounts@btinternet.com

Hire Clophill Village Hall



Wedding Receptions
Birthdays & Special Occasions
Dances and Discos
Club & Community Meetings & Activities

Phone: 07821 643 936

Mail: Clophill.villagehall@gmail.com Web: www.clophillvillagehall.co.uk



ALL CARPENTRY & BUILDING SERVICES PROVIDED

Double Glazing • Windows & Doors • Granite Work Tops
Kitchens & Bathrooms • Wood & Laminate Flooring • Loft & Garage Conversions
Mini Digger & Driver For Hire

Call James 7 days a week on

01462 231734 07595 752466

jamesbonfieldcarpentry@yahoo.co.uk
Shefford, Bedfordshire



USING PARABEN & SULPHATE FREE, 100% VEGAN, CRUELTY FREE PRODUCTS

A Cut Above Hairdressing

by Rachel

In the comfort of your own home
cutting & styling specialist

call or text : 07896 009382
facebook: [acutaboverachel](https://www.facebook.com/acutaboverachel)

Salon experienced / Fully insured / Fully qualified to Level 3 Standard

Advertisers index

Architectural Services

Daniel Design & Build 26
S&S Coates Surveying & Design 28

Auctioneers & Valuers

W&H Peacock 35

Bathroom Services

Bathroom Vogue 40

Builders & Carpenters

James Bonfield Carpentry & Construction 47
CTP Construction 42
McCaffrey Build 45
Peter Sharpe Building Services 23
Stuart Benson Building Projects IFC

Building Supplies

Sheffield Building Supplies Ltd 33

Carpet Services

Carpet & Upholstery Cleaning 45

Car Services/Repairs

A&F Motors Ltd IFC
Mint Alloys 41
TC Coomber Car Services BC

Chimney Sweep

Poppins Chimney Sweep 37

Cleaning Services

Daisy Cooper 25
Time to Shine – Window Cleaner 25

Computer Services

Compu-Doc 25
The Computer Man 35

Electrical Services

Stuart Drew Electrical Services 32

Financial Services

AIMS Accountants 34
ET Accountancy Services 38
Hills-Howson Financial Services 34
MB Accounting Services 46
Savage Accountants 27
SJ Tax & Accounting Services 27

Food Suppliers

Woburn Country Foods 41

Funeral Services

AL&G Abbott, Funeral Directors 24
Neville Funeral Service 39

Garden Services

Adam in your Garden 44
Garden Doctor 33
Green Thumb Lawn Treatment 40
Root 'n Branch 44
Stephen's Plants 42

Health & Beauty

A Cut Above Hairdressing 47
Amphill & Flitwick Physiotherapy 38
Deborah Pedley Osteopathy 46
Linda Allsop Physiotherapy 27
Mobile Hairdresser 29
Molly Coddle 29
Shamrock Clinic - Foot Health 37
The Tanning Salon IBC

Home Improvements

Christopher The Painter 22
Roger Storey - Painter & Decorator 32

Medical Training Services

EMT Academy 26

Music and Entertainment

Greensands Community Choir 22

Nursery Schools

Clophill PreSchool 30
Clophill St Mary's C of E 30
Lower School and Nursery 30
Clophill Toddler Group 17
Wrest Park Day Nursery - Silsoe 43

Pet Services

Conifer Kennels & Cattery 42
K9 Trendi Grooming 28
Lizzie Brown Pet Care 36
Personal Dog Walker 27
Stray Cat Rescue 32
The Bluecat Luxury Cattery 29

Plumbing & Drainage Services

Beta Plumbing 37
Chapman & Kirby Heating 38
Drain Doctor BC

Post Offices

Mace Post Office & Stores 31

Print Services

Amphill Print Centre IFC

Public Houses

The Stone Jug 25

Removals & Storage

Stephens 32

Repair Services

Tim Downing Repair Services 46

Security Services

Maximum Security Systems 43

Take-aways

The Happy Plaiçe 31

Tuition Services

Rincon Tuition (Spanish & Maths) 36

Village Hall

Clophill Village Hall 47

Windows/Replacement

Andrew Baker Windows 44
AW Windows IBC
Misty Double Glazing 29

IFC = Inside Front Cover

IBC = Inside Back Cover

BC = Back Cover

Ads from as little as £50 per year

For further information about advertising in Spotlight,
please contact our Advertising Manager at ads@clophillspotlight.co.uk

The Tanning Station & Pebbles Beauty

- Sunbeds
- Massage
- Eyelash Extensions
- Bio Sculpture
- Pedicure
- Spray Tans
- Footcare Specialist
- LVL
- Facials
- HD Brows
- LCN Nail Extensions
- Manicure
- Hot Stone massage
- Waxing
- Jessica GELeration
- Threading



2 Steppingley Road, Flitwick, Bedfordshire MK45 1AJ
01525 720 095 www.tanningstation.co.uk



Opening Times

Monday - Tuesday	09.00 - 19.00
Wednesday - Thursday	09.00 - 21.00
Friday	09.00 - 19.00
Saturday	10.00 - 16.00
Sundays & Bank Holidays	CLOSED

NO PRESSURE SALES – YOU DEAL WITH THE OWNER FROM START TO FINISH



- ✓ A-rated windows as standard
- ✓ Composite doors
- ✓ High security
- ✓ Bifolding doors
- ✓ Conservatories
- ✓ Fascias, soffits and guttering
- ✓ Insurance-backed guarantee
- ✓ Fensa certificate



Contact: ANDY WOOD

01582 536944 or 07796 272539
sales@awwindows.co.uk



See reviews from satisfied customers at awwindows.co.uk



DrainDoctor®

PLUMBING & DRAINAGE

24 Hours a day... 7 Days a week... 365 Days a year

Your Local Expert Plumbing & Drainage Service

**BEDFORD
& KEMPSTON**

01234 742 900

**LEIGHTON
BUZZARD**

01525 779 818



**BLETCHLEY &
MILTON KEYNES**

01908 849 814

**SANDY &
BIGGLESWADE**

01767 662 040

**FLITWICK
& AMPHILL**

01525 779 818

- All Emergency Plumbing
- All Drainage & Blockages
- No Call Out Charge
- Pre-fixed Prices
- Work Guaranteed

FREEPHONE ALL AREAS

0800 019 2416

T.C. COOMBER



**MOT'S CLASS 4/7
SERVICING & REPAIRS
CAR & COMMERCIAL
TYRES & EXHAUSTS
AIR CONDITIONING
DIAGNOSTIC CODE READING**

AMPTHILL

01525 406330

**Collection
& Delivery**
SERVICE AVAILABLE
Please ask

UNIT F, AMPTHILL INDUSTRIAL ESTATE, STATION RD, AMPTHILL, MK45 2QY