

Vol 36 | No.8

FREE

CLOPHILL SPOTLIGHT

OCTOBER 2014

**LOCAL NEWS AND
VILLAGE EVENTS**

AMPTHILL PRINT CENTRE

**DIGITAL PRINTING
DESIGN & MARKETING
DIRECT MAIL**

and much more...

...and we're right on your doorstep at

Unit 24 Station Road Ind Est, Ampthill, MK45 2QY
(Just off the A507 Ampthill bypass, past the Post Office)

WE PRINT...

- Stationery
- Newsletters
- Menus & Tent cards
- Brochures
- Flyers & Leaflets
- Catalogues
- Books & Booklets
- Direct mail
- Training Manuals
- Banners & Posters
- Greeting cards
- Calendars
- Labels & Stickers
- NCR pads
- Folders
- Exhibition panels
- CD/DVD duplication
- Photocopying

3 DAY STANDARD SERVICE | SAME DAY AVAILABLE

www.fidelityprint.co.uk

Get a quote 01525 300001 quotes@fidelityprint.co.uk

fidelity[®]

Unit 24 Station Rd Ind Est, Ampthill



MOTORS LTD

Tel: (01525) 860292

Tel: (01525) 404919

208 Clophill Road, Maulden, Bedfordshire MK45 2AF
89 Oliver Street, Ampthill, Bedfordshire MK45 2SA

**CAR AND COMMERCIAL VEHICLES
ALSO CLASSIC & AMERICAN CARS
SERVICING – REPAIRS – BREAKDOWN
SPRAYING – M.O.T.**



Stuart Benson Building Projects

**Design, Build and Maintenance including Interior Refurbishments,
Kitchen / Bathroom fitting, Tiling, Flooring, Skirting boards, Doors
Garage conversions. Exterior Decking, Patios, Driveways
Garden Offices/ Sheds**

Tel: 07946 579862 or 01525 403083

Email: benson.stuart@.googlemail.com



A word from the Editor...

Well hello there...

Welcome to the October edition of Spotlight, the magazine that brings you all the local news for your village as well as events in and around the area.

As ever, we've got a **cracking line-up** of articles. There's a look at the history of Clophill's **brickmaking industry** and an interview with a man known as **Mr X Stitch** – read his story inside to find out why. Plus a local author is looking to set up a **writer's group**, and find out how to get involved **planting daffodils** to pretty up our village.

And, of course, **if you need a local tradesperson**, flick to the back of the magazine to find who you're looking for.

If you want to be featured in Spotlight, provide an article or put in a notice, just get in touch with me at editorial@clophillspotlight.co.uk

See you again in November



The magazine staff

EDITOR/ADVERTISING
MANAGER

Helen Gent
editorial@clophillspotlight.co.uk
ads@clophillspotlight.co.uk

864836

DESIGN MANAGER

Chris Abrahams
cmabrahams@yahoo.co.uk

DISTRIBUTION MANAGER

Steve Smith

860216

TREASURER

Richard Pearson

861110

COPY DEADLINE

20th of the month

Don't forget you can now read Spotlight online at
www.clophillspotlight.co.uk



“The Beauty of Clophill”

**An exhibition of art and photography
by our own local artists at
St Mary’s Church, Clophill**

Friday 31st October

Gala preview Evening 6pm-9pm

Tickets £5, includes wine and canapés

Saturday 1st November

Viewing from 11am-3pm

Entry by donation. Refreshments available

Sunday 2nd November

Viewing from 11am-3pm

Entry by donation. Refreshments available

Tickets available from Heather Jarvis **860548** or Christine Fellini **861912**

Clophill Preschool News



Hello everyone!

What a busy start we've had to our second year! We have lots of new starters and, despite not doing very much advertising, word seems to be spreading of our fantastic provision up at the Village Hall.

As usual we've hit the ground running by developing both our outdoor and indoor space even further. During the holidays, we explored new ideas and activities and brought these back to the Village Hall to see how we can adapt them to our environment. If we find an idea that we think will enhance our provision and the children's learning and experience with us then we work very hard to integrate it into our setting.



So far this term we've been **building fire engines with our milk crates and boxes** and painting fire pictures on our outside frieze to develop gross motor movements that lead to good pencil control. Laura from the Children's Centre in Flitwick visited us to do a song session with the children – they were captivated, so thank you Laura. We also had a Coffee Morning fundraiser for Macmillan Cancer and we'd like to say a

huge thank you to all those who came along to support us – we hope you enjoyed the cake.

As many of you know, we own the Preschool as well as manage it. We set it up ourselves to support the children and families in our village and surrounding areas, taking children from two years of age. **We set it up with our own money and run the business as a not-for-profit**, with no help from a Committee. We only started paying ourselves a (very meagre) wage in May, nine months after starting. We run this Preschool because we believe we can offer children a fantastic step into education and learning and because we have a passion for it, certainly not for the money!



Since the two of us started the Preschool in 2013 our staff numbers have increased...to 4! We pride ourselves on the fantastic relationships we have between ourselves as we believe a good rapport between staff makes for a productive and well-managed room full of conversation and engagement. As a result, we choose our staff very carefully, not just by their qualifications – though these are very important – but by their character and how well we work as a team. So we now have Imogen (teacher), Chris (Nursery Nurse), Julie (NVQ 3) and Kimmy (apprentice on a childcare course).

We are **now open for a full day on a Monday** so your child can do one or two sessions then, and we have a flexible pick-up between 3pm and 3.30pm so siblings can be collected from school. And just to let you know, we still have some places left – so do get in touch on 07732 872685 or email us at clophillpreschool@gmail.com

Chris and Imogen

• If anyone has an interest or job that they think our children may enjoy learning about please send us a line or pop up and see us – we would love to hear from you.



Clophill through the years

by Colin Watt

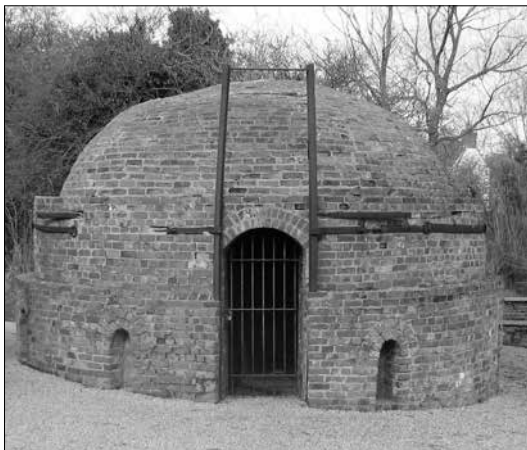
Brickmaking

Most villages have a history of local brickmaking and Clophill is no exception. Before the time of the internal combustion engine the only means of local transport was horse-drawn. Bricks are heavy and are required in large quantities to build a house, so it was much more economical to make bricks locally with the best materials that could be found rather than transport them. Although Clophill nestles below the Greensand Ridge there is overlying clay to the north suitable for brickmaking.

The brickmaking-process started in winter with the digging of the clay, which was then left to weather. In the summer the clay was mixed with sand, by hand at first and later in a pugmill. The bricks were moulded by hand in wooden moulds then left undercover to dry.

A brick clamp is one of the oldest methods of firing bricks. The unbaked bricks are stacked with fuel under or among them, and then the fuel is set on fire. The outside of the clamp may be insulated by packing earth or mud around it. Later, updraught kilns known as Scotch kilns were used. These were permanent structures with one or more firing chambers around the circumference.

The local clay in Clophill produced a soft red brick which can be seen in many buildings around the village. There's also a yellow brick that was made in the Arlesey area.



One of two brick kilns at Great Linford, Milton Keynes

Sometimes the fire was too hot and the exposed ends of some of the bricks overheated and started to vitrify, turning a dark shade of blue. These weren't wasted but used to produce patterns in the walls.

In 1979 Alan Cox published the results of his extensive research into brickmaking in Bedfordshire. He found that the earliest reference to a kiln in Clophill is in an inventory of the belongings of William Burden in 1619 that lists a 'Claphill tyle kiln'



Brick pattern called Flemish Bond using burnt headers

There are many references in the records to brickmakers living in Clophill right through to 1850 when Slaters Directory lists George Crouch as a Brick and Tile Maker. Mary Phillips in the Clophill Story says that Susan Heath, widow of the brickmaker Tristram Heath, lived at 2 Mill Lane in 1666.

Cox supposes that there was a tile and possible brick kiln north of the village, to the north of Kiln Farm. This may have been in the field behind 6 Old Kiln Lane. Many fragments of tile have been found in the corner of the field. There is a steep bank at the rear of the property showing that the ground level has been lowered due to the extraction of the overlying clay. On the 1719 Estate Map the field is called "Tile Kiln Close". Cox says it might have existed until 1740 or later.



1719 Wrest Park Estate Map showing Tile Kiln Close north of Old Kiln Lane

A second, later, kiln was where Kiln Farm now stands and may have existed from 1740 until 1850. The remains of a Scotch kiln has been found below outbuildings at Kiln Farm.

It's remarkable that Clophill, being close to the Greensand Ridge and its deposits of Sandstone, has so few buildings made of the material. The old and new St Mary's churches and the Stone Jug public house are the only surviving examples, though there are many boundary walls made of the stone.

If anyone has any corrections or additional information please contact
Colin on **01525 860922** or **colin.watt@mooncarrot.org.uk**.

CLOPHILL COMMUNITY CARE (C3)
07791 773 705

2014 Annual General Meeting

Clophill Community Care will hold its Ninth Annual General Meeting in the Methodist Church school room on **Wednesday 15 October 2014 at 10am**. Afterwards, there will be tea and chat. Everyone in Clophill is entitled to attend.
For a lift, please call 07791 773 705.

Our Services: In the course of our work we've built up a degree of understanding of the problems faced by some of our customers. The first place to go for physical or mental help is your Doctor. However, you might like to make a note of some of these contacts: **Carers in Bedfordshire** 01234 214914; **The Silver Line** (help for older people) 0800 470 80 90; **Samaritans** 01234 211211; **MIND** 0300 330 0648; **Alzheimer's Society** 01234 327380. We also have leaflets on various help services, and I would remind people that we also offer a range of services to those less able, not just car lifts. **Call us on 07791 773 705** and we will do our best to assist.

David Myers, Chairman

A black and white photograph of two children, a girl and a boy, standing on a stone ledge and looking out from a large window of a stone tower. The girl is on the left, wearing a quilted jacket and a ponytail. The boy is on the right, wearing a dark jacket. They are looking out over a scenic landscape with fields, trees, and distant hills under a cloudy sky. The stone walls of the tower are visible on either side of the window.

Tower tours

St. Mary's old church, Clophill

**Climb the tower
Learn our history
Savour spectacular views**

Now open for bookings

Tours are available 10am and 2pm, daily

**Max. group size 8*

Adults	£4
Children	£2

info@clophillheritage.org
07935 911207

Very limited parking on site; please walk if you are able.

Image by LRP'S

News from Clophill Heritage Trust

The Old Church

August and September saw the opening of the Old Church tower to the public and the first of the 'volunteer guided' Tower Tours. These are administered by our group of 24 volunteers, to whom we are most grateful and who have undergone basic training in 'health and safety' and in background history. The tours will now become regular week day and weekend events.

One visitor wrote to us saying *'I was SO IMPRESSED by what I saw, and heard, on Saturday from the top of the tower at old St Mary's church...'*

We also received a letter of support from the leader of Central Bedfordshire Council. In an extract from the letter, dated 12 September, it reads:

Clophill Eco Lodges and Observation Tower.

'I am writing in support of the Clophill Heritage Trust's project at the Old Church site in Clophill. Following my recent visit I would like to commend you on the progress you are making. It is very encouraging to see a local, volunteer-led, community charity creating a beneficial use for a valued regional site. Indeed the site occupies an important location sitting at the centre of Bedfordshire's 40 mile Greensand Ridge walk.

Central Bedfordshire has identified the need for additional countryside access and encourages healthy living with accessible and affordable outdoor sport and recreation. The potential for outdoor activities and education is significant and the Council wish the Trust all the best in their endeavours now that the Old Church Observation Tower is completed.

Our grant has demonstrated our support for the project and I wish you every success in securing funding from other sources.'

- For further information on the Tower Tours, go to **www.clophillecolodges.org.uk**

Ecolodges

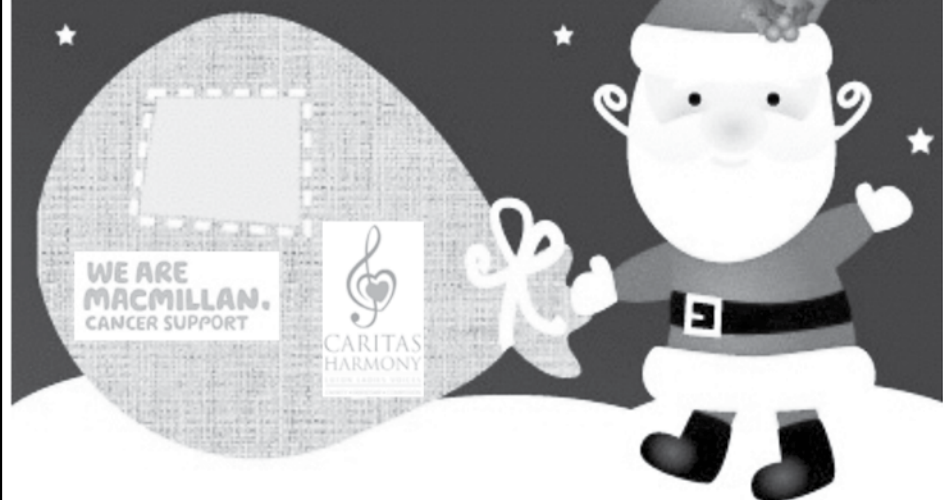
You'll probably have noticed that the Ecolodges (with the exception of the wardens unit) are not yet ready for occupation. Unfortunately this is due to a slowdown in our funding upon which building work is dependant.

We're urgently seeking funding support for the final phase of the project – £140,000 – to fit out the Eco Lodges, install the off-grid solutions, complete landscaping work and ultimately deliver the sustainable enterprise that will underpin future upkeep of St Mary's old church, an ancient monument. We're actively in discussion with grant-making trusts, landfill community funds and individuals, with the aim of completing the facility by Spring 2015.

Getting the facility up and running is essential to ensure that the site and heritage are preserved for future generations to enjoy. If you, or your business, could assist with either monetary or 'in kind' contributions it would be hugely appreciated. Please contact Ali Bradbury (07894 71000), John Wright (07860 839845) or Barry Breed (01525 860834).

In the meantime 'behind the scenes' work continues on all the outdoor and educational activities planned once the centre is open.

Gift A Song



**Caritas Harmony Are Joined By Ladies
from Herts, Beds & Bucks To Gift A Song
For Macmillan At Christmas**

**Christmas Spectacular
6.30pm Sat 13 December 2014
Methodist Church, The Square,
Dunstable LU5 4NA**

**Tickets £5 from Brenda Wood on
01582 873656** (Children 12 and under free)

email - info@caritasharmony.co.uk

www.caritasharmony.co.uk

SPOTLIGHT *meets...*

This month, Spotlight chats to **Jamie Chalmers**, aka 'Mr X Stitch'

When Clophill resident Jamie Chalmers isn't working as an IT project manager for the Action for Children charity, he likes to relax with his favourite hobby – cross stitching.

'It all started 12 years ago when I was looking for something to occupy myself on a flight to Canada,' says Jamie. 'I saw a cross-stitch kit and figured that it would be interesting and would keep me busy. As soon as I started doing it, I fell in love with it. There's something really meditative about cross-stitching because it makes you slow down and relax. And what could be more enjoyable than making something you can give to someone as a gift.'

Today, Jamie is one of the country's most famous male embroiderers. His website www.mrxstitch.com gets 20,000 visitors a month from 130 countries. And at embroidery shows he's attained near rock-god status, with people queuing up to be photographed with him. 'I suppose, being a man, I'm still a bit of a novelty,' admits Jamie, who's appeared on TV with Kirsty Allsopp and has been interviewed by Chris Evans on Radio 2.

Jamie is keen to spread the cross-stitching word, and regularly runs workshops as well as lecturing on embroidery at universities. *'I especially love going into schools because I'm so not what kids expect. I like to show them that cross-stitching isn't just for grannies.'*



He says his mind is constantly buzzing with new ideas for cross-stitching designs. He crafts irreverent pieces using graffiti, logos and 3D effects and is currently working on a cross-stitch version of the Mona Lisa.

'I've never been a pub kind of bloke, so nobody who knew me was surprised when I started cross-stitching,' says Jamie, who lives with his fiancée, Mary. 'When I first started I wasn't always comfortable doing it publicly as people can find it strange, but I've discovered it can be a real ice-breaker. A couple of years ago I was cross-stitching on a flight to Chicago and got chatting to the bloke next to me. The next thing I knew, he was having a go himself.'

Jamie would recommend cross-stitching to everyone. *'It only takes about 5 minutes to learn,' he says. 'People who do it find it really relaxing – they just get caught up in what they're doing. And it's a lot of fun when you cross-stitch in a group with other people. It's definitely good for the soul.'*

• If you're interested in joining a cross-stitching group contact Jamie at sales@mrxstitch.com

Jamie will be running next year's London marathon in aid of **Action for Children**.

If you'd like to sponsor him, go to <http://uk.virginmoneygiving.com/JamieChalmers>

A Matinee Concert
with
The Parkside Singers



Performing for the first time at

PARKSIDE HALL

Woburn Street Ampthill

Saturday 25th October 2.30pm

(doors open 2pm)

Tickets £7

(including light refreshments)

**from Ken Jones 01525 753110
or Brian Matthews 01525 841077
or at the door**

www.parkside-singers.co.uk

Let's talk about Christmas parties

with Sally Cobban



This year has been flying by and I'm amazed at how many people are already talking about Christmas! As I've mentioned the 'C' word, I thought I'd take the opportunity to talk about the tax consequences of a company's annual do.

An employer can spend up to £150 per head on an annual do – ie Christmas Party or Summer Ball – without this being considered a benefit in kind to the employee and still being a tax deductible expense for the company (for staff only – not for clients). This £150 limit should be all inclusive and include any travel to get to the event (that is laid on by the employer), food, entertainment and drink.

So for those of you who work for a company that is planning its Christmas do, or for those of you organising one, this is the limit of spend to get it through board approval. Be aware, though, only one annual event can qualify for this treatment.

Below is a list of other items that an employee can get without incurring a benefit in kind tax charge.

- Contributions paid by your employer into an approved occupational or personal pension scheme for you as an employee. Nearly all schemes are included.
- Cheap or free canteen meals, if these are provided for all employees, even if separate facilities are provided for different groups of employees.
- In-house sports facilities.
- Counselling services to redundant employees.
- Certain childcare arrangements.
- Works buses, or subsidies to public bus services, to get employees to and from work.
- Bicycles and cycling safety equipment provided for employees to get to and from work, and workplace parking for bicycles and motorcycles.
- Reasonable removal expenses if you have to move to take up a new job or are transferred by your employer, up to a maximum of £8,000 for each move.
- Genuine personal gifts given for reasons unconnected with the job, for example, retirement gifts other than cash, or wedding gifts.
- Gifts, other than cash, that you receive from someone other than your employer, for example, seats at sporting or cultural events, provided that any gift or outing isn't worth more than £250 in a single year.
- If you're disabled, equipment and facilities provided for you to carry out your job.

You can get in touch with me at
sally@sjtax.co.uk or **07899 808592**; www.sjtax.co.uk



St Mary's School News

“ At St Mary's we have all happily settled back into a new school year. I have the pleasure of taking over the Headship at St Mary's and have been enjoying getting to know all the children and meeting parents. I'm also keen to get to know the wider community around St Mary's, so please say 'hello' if you see me around the village. Also, if there's any way you'd like to support the school, please make an appointment at the school office to come and see me as I'm always eager to develop ways of working together with the community and enhancing the learning experiences of our pupils. I look forward to meeting as many members of the community as possible during my time at St Mary's. **Mrs. K. Bingley**, Headteacher ”



Our Value for October is *Trust (and Loyalty)*

Our Value this month is Trust; a belief in the honesty, reliability and strength of another, relying on someone or something without question or evidence. In school, we've been thinking about what it means to trust someone and how it feels to be trusted. You may wish to consider the following: for relationships to work we need to trust others but in turn they need to trust us. We need to be reliable and honest for people to be able to do this.

Harvest songs and Tea Time Concerts

October starts a busy schedule of events for the children. Choir will be visiting Beverley Court to sing their Harvest songs, and they've also been invited to visit St Albans Cathedral to join in with their Harvest Service. We're pleased to be continuing our Tea Time Concerts as it's such a lovely opportunity for the children learning instruments in school to play in front of their parents and wider audience. We have children playing piano, guitar, drums, recorder and violin. Our next **Tea Time Concert will be on Wednesday 22 October at 3:30pm**. We'll also start to prepare for our biggest fund-raising event of the year which is **fireworks night on Saturday 8th November**. Tickets will be on sale shortly.

Free School Meals for Reception and Key Stage 1

As you'll have heard in the news, every child in Reception, Year 1 and 2 are entitled to a free hot meal in school. So far our school has got off to a flying start, with each week bringing an increasing amount of children taking up the opportunity of a meal. We've also engaged a new catering company this term and will be inviting parents into school to take a lunch so that they get a good idea of what's on offer for their child/ren.

Clophill United Charities

The trustees of Clophill United Charities are keen to support families in times of hardship to ensure that all children have access to school activities and trips. This support is provided in total confidence and further information is available from Sharon or directly from the Clophill Charities Clerk, Gillian Hill, on 1525 860539. They are very approachable and any help provided is totally confidential.

St Mary's School News

Continued

Admissions Main School for September 2015

- **1 September 2014** Online starting school 2015 system opened for parents/carers to apply. Visit www.centralbedfordshire.gov.uk/onlineadmissions Paper application forms are also available from the website, schools and by contacting School Admissions.
- **15 January 2015** National closing date for applications to be received by School Admissions.
- **16 January to 30 April 2015** Late applications received during these dates will be processed in the late allocation round.
- **30 April 2015** Parent/carers who are declining the place offered or wish to change their preferences need to submit a change of preference form by this date to be considered in the late allocation round.
- **8 June 2015** Late allocation round offer day – decision letters posted out via a 2nd class post, so will arrive a few days later.
- **June 2015** Late applications received after 30 April will be processed during this month.

For lots of useful information on St Mary's, go to www.stmaryslower.info

Term Dates

Autumn Term 2014

Half term 27-31 October
Term ends 19 December

Spring Term 2015

Term starts 6 January
Half term 16-20 February
Term ends 27 March

Summer Term 2015

Term starts 14 April
Half term 25-29 May
Term ends 17 July

Acorn Nursery News

We've welcomed ten new children to Acorn Class: Darcy, Zivah, Oliver, Grace, Maeve, Jodie, Danny, Anna, Phoebe and Cooper, and they've all settled really well. It's also really nice to see that the children who've moved up into Chestnut have settled really quickly there, showing us that our transition visits worked well. As we've had a lot of new children and **our nursery value is 'Friendship'**, we've been focusing on learning each other's names and interests and extending the activities for the older children to include drawing their families and writing their names. We've practised our fire drill and the children found it quite exciting sitting on the field **listening to a Fireman Sam story**. With Autumn around the corner **our resident squirrel** has been seen running across the fence and up the tree so the children have started to learn a new rhyme about 'Whisky Frisky' the squirrel.

- If you wish to register your children for nursery, please get in touch sooner rather than later, particularly if you need specific sessions as we're filling up fast.





World War 2 veterans who took part in the liberation of France in 1944

The Parish Council has been informed by the Ministry of Defence that the French Government wishes to award the Legion d'Honneur to surviving veterans who took part in the liberation of France in 1944. The award will be given to not only those who took part in the D-Day landings, but also in the wider Battle of Normandy, the Invasion of Provence and the liberation of Paris. Royal Navy and Royal Air Force veterans who operated in support of the landings will also qualify.

If any Spotlight readers know of anyone who may qualify, please contact Ralph Brough on **01525 860844** for more details of the application process.

We've already nominated Mel Hughes our former Parish Council Chairman who took part in the campaign.

War Poetry, from Aeschylus to the Helmand province

Monday 3rd November Speaker: Mark Steinhardt

Poetry from actual combatants. Experience the taste and first-hand perception of war as it happens.

The Story of Rudolf Hess

Monday 1st December Speaker: Tony Eaton

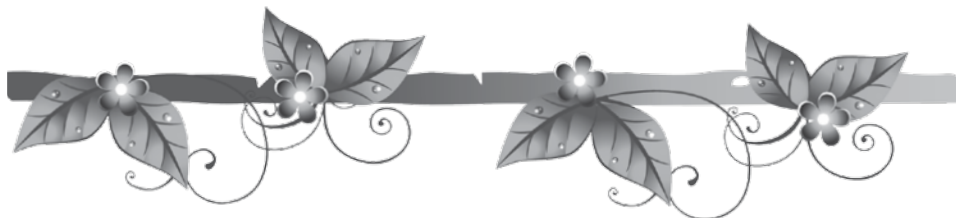
Hear the latest thinking on one of the mysteries of WWII, and the source of many myths and intrigue. A glass of wine with mince pies will follow.

Flitwick Library Lecture Theatre, 7.30pm for 7.45 pm
£2 for members and £2.50 for visitors, payable on the door

For further details contact Clive Makin on 01582 655785
or clive.makin@ntlworld.com, www.adalhs.org.uk

Amptthill & District Archaeological & Local History Society





Clophill & District Flower Club



After a beautiful Summer there's now a feel of Autumn, and so appropriately our Demonstrator for September, Barbara Collins, showed her interpretation of **Shades of Autumn**.

The first arrangement used a selection of garden foliage, rubus, ivy, euonymus, skimmia and rosemary (always remove the growing tip as

they will droop). Included in the display were several blue spires of aconitum, orange alstromeria and deep crimson carnations interspersed with pyrocantha berries, pink sedum and golden roses.

Arrangement two was a modern theme using a trellis framework woven with orange wool as the background. Several test tubes were added containing fatsia leaves and pale orange gerbera. The base was covered with laurel leaves, osmanthus sprigs and orange carthamus sprays, and the look was completed with an Autumn-coloured cymbidium orchid trailing the trellis.

Next, Barbara filled an oversized basket with bergenia leaves, reds of cotinus and branches of laurel, variegated forsythia, rosemary and leycasteria (pheasant berry) tassels. Burgundy roses and Autumn-coloured chrysanthemums completed the design.



To greet the harvest, two large cornucopia overflowed with yew, trails of light-coloured ivy and wheat ears, along with burgundy-sprayed chrysanthemums, hypericum berries, poppy heads and pale tangerine roses.

Next, a copper coal scuttle was filled with acanthus spikes (these dry well), lime-coloured thuja, dried bronzed fatsia leaves, physallis (Chinese lanterns), pale peach alstromeria and orange carnations. Several burgundy-sprayed chrysanthemums were added to effect fire.

In the last of Barbara's arrangement, phormium leaves stood proud above a base of palm, fatsia, spotted laurel and willow-leaved hebe. Orange gladolli, lime-coloured cymbidium sprays of red lilies and gold gerberas were also included, along with several lime-green anthuriums.

Tickets are now on sale for Anna Steven's 'Magic of Christmas' on December 4. Visitors, £10. Phone 01525 860539

VENUE

CLOPHILL
St Mary's
C of E SCHOOL

SATURDAY
8TH NOVEMBER

GATES OPEN 5.30PM
FIREWORKS 7.00PM

BAR BBQ GAMES STALLS

IN ADVANCE FAMILY TICKET £14
(2 ADULTS AND 2 CHILDREN) £1 PER EXTRA CHILD

IN ADVANCE - ADULT £5.50 / CHILD £3

ON DAY - ADULT £6 / CHILD £3

Tickets available from School
reception and Clophill Village Store

NO SPARKLERS ALLOWED

CHARITY NO.1062795

Volunteers needed to plant Daffodils

Thanks to a generous donation from Michael Robotham, we can now plant more daffodils in the village. I've already made a start planting the bulbs, but would **love some help from volunteers**. If anyone would like to help bring more colour to Clophill, I'd love to see you at The Green on **Saturday 18 October at 10am**. Please contact me at janebreed@hotmail.com or 01525 860834 to let me know if you're available, even if it's just for one hour. Other plantings can be arranged with individual volunteers, and suggestions for brightening up dull corners would also be welcome.

We are lucky to have been awarded a **'community tree pack'** from the Woodland Trust which will, in part, be used to fill the gaps in the hedgerow between The Green and The Flying Horse car park. The surplus will go over the river to further screen the village from the road junction. Unless of course you have other ideas! Planting the whips will take place in the second half of November – if you're able to help, get in touch on the number above. *Jane Breed*



Bedfordshire
Cambridgeshire
Northamptonshire

Wildlife walks & talks



Fungal Foray

Wednesday 29 October, 10am, Flitwick Moor

A mid-week walk through the moor with renowned expert Peter Walker. Fingers crossed for a good showing of mushrooms and toadstools – a reason to hope for a damp end to the summer! Numbers are limited. Booking is essential.

£1 per adult participation fee

To reserve a space, or for additional information, please email flitvale.info@gmail.com or ring **Ann** on **07890 347327** after 6pm or at weekends



Quiz Night and Supper

**Friday, November 21, Maulden Village Hall,
7.15pm for a 7.30pm start**

Join the Wildlife Trust local group and the Greensand Trust for a fun evening and help support local wildlife activities. Teams of four to six. We can match people to teams if needed.

Fish supper and a glass of wine, £10 per person.
Please request when booking if you'd like the vegetarian option.

For tickets, flitvale.info@gmail.com or ring **Ann** on **07890 347327** after 6pm or at weekends

Christine's quick 'n' easy recipe

Chicken Breast with Red Onions and Olives



INGREDIENTS Serves 4 as a main course

- 1 large chicken breast per person
- 1 large clove of garlic
- a splash of extra virgin olive oil
- 2 medium red onions
- 10-12 pitted black olives
- handful of chopped fresh oregano
- salt and freshly ground black pepper
- small glass of dry white wine

1. Discard the skin and any fat and cut the chicken breasts into bite-size pieces.
2. Thinly slice the red onions (use a mandolin if you have one).
3. Finely chop the clove of garlic.
4. Heat a splash of extra virgin olive oil in a large frying pan.
5. Put the chicken pieces, sliced onion and garlic in the hot oil and cook for about 5 minutes.
6. Once the chicken is cooked add in the glass of white wine and cook for a further minute.
7. Finely add in the olives and the chopped oregano (use dried oregano if fresh isn't available).

Italians would eat this with some nice crusty farmhouse bread and a green salad.



SEASONAL TIP Now's the ideal time for foraging chestnuts. Just take a bag and go along the hedgerow on the A6 and there are as many as you like for free!

- Christine runs Italian cookery course in the village www.casafellini.co.uk

Calling all budding or published writers in Clophill

Diana Jackson, a Clophill resident and author who has already set up a successful writing group in Ampthill, would now like to start a writing group in Clophill. Whether you're into fiction, non-fiction, poetry, plays or film scripts – in fact anything that celebrates the rich written word of English – come along and join an informal monthly gathering.

If you're interested call **Diana** on **0775 360 8654**

Clophill Writing Group



Clophill Parish Council

Notes from the Annual Parish Council meeting held on 30th September 2014

Readers are reminded that this is a resume only of the meeting. The parish council minutes are published and can be found on the internet after they are authorised (approximately five weeks after the relevant meeting).

Public Question Time

There were no members of the public in attendance

Death of a Parish Councillor

Before the meeting commenced the Chairman paid tribute to Bob Parker-Eaton who had recently died. Bob had a long and distinguished career in the RAF before taking on a role as a Chief Executive in civil aviation. He had for many years been a member of the parish council and was chair of the planning committee. His contribution had been unmatched in his enthusiasm and commitment on behalf of the village he served. Tributes were also given by other parish councillors and our district councillors. The council had a minute's silence as a mark of respect to Bob. Our sympathy as a parish council and village goes to Dorothy and Bob's family. He will be missed.

Police Report

One of our PCSOs gave a report regarding crime within the village. Crime was again low but damage offences in the High Street area had increased. The message as always is simple – report suspicious people or incidents, keep your homes, garages and vehicles secure. By these methods we can help keep our community safe.

The Lands Committees

We're still awaiting a date from Amey (the Bedfordshire Highway's contractor) for the removal of the redundant footbridge at The Green. We're informed that UK Power Networks have to relay the main power cable to the village before our work commences. It's still hoped that the work will be completed by the year end.

The Green

CPA volunteers, in particular Jane and Barry Breed, have been busy tending the land by the river. In addition, John Wight has repaired the damage to the seat. The Parish Council would like to thank them for all the hard work they put in to keep this area in tip-top condition.

On 18th October, Jane will be planting new bulbs and would like as many volunteers as possible to help (please contact her directly). Our thanks must also be sent to Michael Rowbotham for once again giving generously for the purchase of these plants.

Roger Catton is giving up part of his job for the village as custodian. Roger has for many years kept the village tidy and litter free, and the parish council would like to publicly thank him for his time and good work. He will, however, still ensure that our bus shelters are kept nice and clean. If anyone is interested in applying for this vacancy, please contact the parish clerk. A salary is payable.

Vacancy for Parish Councillor

There is a vacancy for the role of parish councillor. This is suitable for someone who wants to take an interest in the local community, is a good listener and willing to help

Clophill Parish Council

Continued

the village to maintain its good standing and improve conditions for those who live here. If you'd like to apply, or in the first instance just talk about the role that's on offer, please contact either the clerk, Lyn Lyman, or Peter Clarke, the Chairman. The 'job' can be a very rewarding experience.

Planning – September 2014

Applications Received by Central Bedfordshire

CB/TCA/14/00368

Location: 29 High Street

Proposal: To reduce the height of conifers and silver birch trees, which are in the property's back garden.

SUPPORT

CB/14/09730/FULL

Location: 44 Cainhoe Road

Proposal: A first-floor side- and two-storey rear extension. The proposal will ensure that there is adequate off-street parking. Similar work has already taken place at other houses within this area.

SUPPORT

CB/14/13506/FULL

Location: 17 Goodwood Close

Proposal: To extend the property on the ground floor. The proposed extension will be to the rear of the house and not viewable from the road. Its location backs onto woodland.

SUPPORT

Please note: Bob Parker-Eaton compiled our Planning pages, and due to his sad passing this month's section is smaller than usual.

The next Parish Council meeting will take place at 7.45pm on 28th October, in the village hall with a surgery at 7.30pm

News from Clophill Parish Action

Pollution and Recycling Group

To mark its 60th year, the Tidy Britain Group is holding **a big tidy-up in October** with the help of Waitrose and The Wombles! As CPA held a Clophill Springclean, there won't be an organised event, but we would encourage individuals to choose an area which is a litter hotspot and to clear it up at a time convenient to them. At the Springclean we found that the worst areas were the Green, Bedford Road, Beverley Court path and Readshill at the west end, Town Shott and the footpaths at the east end, and the Playing Field.

If you want to borrow a litter picker, contact Ali Bradbury at info@clophillheritage.org
Adrienne Gordon

- To find out more about the **Big Tidy Up**, visit www.thebigtidyup.org

What's on in and around Clophill

OCTOBER



Saturday 18th

Daffodil planting in Clophill See *this issue* for details



Saturday 25th

The Parkside Singers Matinee concert. See *this issue* for ticket details



Friday 31st October to Sunday 2nd November

'The Beauty of Clophill' Art and photography exhibition by local artists.
See *this issue* for times and ticket details

NOVEMBER



Monday 3rd

War Poetry Readings at the Ampthill & District Archaeological & Local History Society.
See *this issue* for details



Saturday 8th

Fireworks Night at St Mary's School, Clophill. See *this issue* for full details



Friday 21st

Quiz Night and Supper 7.15pm at Maulden Village Hall. See *this issue* for ticket details

DEC



Monday 1st

The Story of Rudolf Hess A talk on the German politician at the Ampthill & District Archaeological & Local History Society. See *this issue* for details

On every month...

Tuesdays and Fridays

• **Boxing Club** Kids' club: 4-11-year-olds, 6pm-7pm; senior club: 12 upwards, 7pm-8pm. £2.50 a class. See 'Village Groups' for contact details

Every Wednesday

- **'Tea and Chat'** in Clophill Methodist Church Schoolroom, 10.30am-noon
- **Celtic Evening Prayer**, Clophill Methodist Church, 7.15pm. All are welcome
- **Zumba Toning**, 8pm-9pm, Clophill Village Hall

Every Friday

- **Clophill Toddler Group** Clophill Village Hall, 10am-noon See 'Village Groups' for contact details

One Saturday a month

- **Messy Church** Clophill Methodist Church, 4pm-6pm, November 15th; December 13th
All-age craft activities, worship and a meal for all the family. No fixed charge, donations welcome to cover costs, children must be accompanied by an adult. See 'Village Groups' for contact details.

If you have any diary dates that you would like included on this page, please email clophillspotlight1@hotmail.co.uk

Spotlight is now taking **quarter-page**
black and white ads

Email ads@clophillspotlight.co.uk for details

Useful numbers

Gas (Emergency)			0800 111999
Electricity (Emergency)			0800 7838838
Emergency Fire/Police/Ambulance			999
Water/Sewage (Anglian Water)			0845 7145145
Telephone	(Customer Services) 150	(Faults)	151
Highways Department (Central Bedfordshire Council)			0300 3008049
Benefits Agency (Bedford office)			01234 361500
Registrar's Office (Births/deaths/marriages)			0300 3008089
Rail (Enquiries)			0845 7484950
Buses 01234 262151	(Link A Ride) 01525 840511	(Flittabus)	01582 406561
Luton Airport			01582 405100
Swimming	(Flitwick) 01525 717744	(Robinson Pool)	01234 212479

LIBRARIES

	Bedford	01234 350931	Ampthill	01525 402278
	Barton	01582 881101	Flitwick	01525 715268

LOCAL GOVERNMENT

Central Beds Offices (Chicksands)			0300 300 8000
Mid-Beds MP		Nadine Dorries	01462 811992
Central Bedfordshire Councillors		Michael Blair	01525 404513
	Paul Duckett 07988 184061	Mark Smith	01525 402560
Clophill Parish Council		Peter Clarke	01525 861179
	(Clerk)	Mrs Lyn Lyman	01908 584159

HOSPITALS

Bedford (North & South)	01234 355122	Admissions	01234 261150
		Appointments	01234 359012
Luton & Dunstable			0845 1270127

DOCTOR'S CLINICS

Ampthill	(Houghton Close) 0844 8151055	(Oliver Street)	01525 631395
		(Greensands)	01525 631390
Shefford	Enquiries 01462 818620	Appointments	01462 810034
Barton 01582 528700		Flitwick	01525 715300

POLICE

		Non Emergency	101
County Police HQ			01234 841212
Ampthill Station			101
Clophill Local Policing Team			01234 842613

CHURCHES

St Mary's Parish Church	(Gill Jones) 01525 861058	or (Liz Henman)	01525 860108
St Francis of Assisi Shefford			01462 813436
Clophill Methodist Church		(Mr Jim Davies)	01525 860829

SCHOOLS

Clophill St Mary's C of E Lower School & Nursery	(Headteacher Mrs K Bingley)		01525 860206
Harlington Upper School , Harlington			01525 755100
Redborne Upper School , Ampthill			01525 404462
Robert Bloomfield Middle School , Shefford			01462 628800

Village groups

Beverley Court	Sharon Soper	860920
Boxing Club	Loraine Freeman	07714 014484
Brownies	https://enquiryym.girlguiding.org.uk	
Christians Together in Clophill	Fergus Milne	860894
Clophill Community Care	Duty Contact	07791 773705
Clophill Heritage Trust	Ali Bradbury	07894 710001
Clophill Parish Action	Ali Bradbury	07894 710001
Clophill St Mary's C of E Lower School & Nursery	Sharon Kempson	860206
Clophill Toddler Group	Emma Topliff	07921 810424
Clophill United Charities	Gillian Hill	860539
Conservation Group	Brian Adams	862297
Flower Club	Gillian Hill	860539
Friends of the Cheshire Home	Sue Pearson	861110
Funzone After School Club	Rosemary Ilett	860274
Indoor Carpet Bowls	Tony Meredith	860754
Messy Church	Victoria Higgins	07920 568861
	victoriajhiggins@hotmail.co.uk	
Neighbourhood Watch	Mick Everitt	861049
Pre-school	clophillpreschool@gmail.com	07732 872685
St Mary's PTA	Lindsey Jones	07879 430956
Scouts and Cubs	Ralph Rayner	403956
Tuesday Club	Betty Hampson	860750
Village Hall Booking Secretary	Marilyn Browning	07821 643936

Parish registers for October

1814

No registers recorded for October 1814

1864

Baptisms

October 2	Sarah (?)
	Sophia (?)
	Edward William Clark
	? Ann Bottoms (?)
	John Braybrook (?)
	Mary Ann Bone (?)
	Alfred William (?)
	William (?)

Burials

October 26	Illegible
------------	-----------

1914

Baptisms

October 25	Annette (?) Beatrice
	Mary Doggett
	Phyllis Dorothy Brown (?)
	Sylvia Priscilla Kathleen Eddy
	Ellen May Taylor

No marriages or burials recorded

1964

Baptisms

October 4	Marian Debra Burrows
	John Wallace Burrows
	Charmaine Leslie Bone

October 11

Marriages

October 24	Ivan Keith Stringer to Jacqueline Ann May Taylor
------------	---

If you have any stories or information about the people named in the records, which you'd like to share with us, please get in touch.



Tomkinson's Stained Glass Ltd

is looking to purchase antique stained glass windows, in any condition.

Contact Stephen Tomkinson on 01525 838479 or 07831 861641
or email stainedglass@talktalk.net www.vitraux.co.uk

Telephone
**01525
860526**

The Stone Jug

A Free House
BACK STREET, CLOPHILL

The matriarch (yes, that would be Joyce) did a good job of spend, spend, spend during 2013 – and so we need your help to readdress the balance of the economy and make 2014 the year to visit 'The Jug'!

Still quality home-cooked lunches.

Still quality real ale.

Still good conversation in a relaxed atmosphere.

Still no credit card machine (but there soon will be!)



REMEMBER OUR MOTTO

"A VISIT TO THE JUG IS BETTER THAN GOING TO A PUB"
CHEERS JOYCE & VIKKI

Compu-Doc[®]

Sick PC or laptop?

Call the Doc for -

Hardware & software

Diagnosis & treatment

01525-402227

John.stafford@compu-doc.biz



"Treating local computers since 2000!"

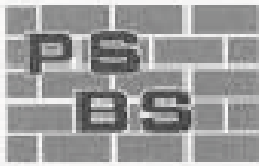
CLOPHILL TODDLER GROUP

Understanding the importance of a child's play

LOTS OF TOYS, SPACE AND FRIENDS
FOR BABIES AND TODDLERS UNDER 3

FRIDAYS 10.00 – 12.00 at the Village Hall
See 'Village Groups' for contact details





PETER SHARPE

BUILDING SERVICES LTD

**Call us first for ALL your building works
and get reliability, quality & sensible prices.**

Domestic extensions

Design & build service

General building works, drives, patios

Carpentry, kitchen fitting, wall & floor tiling

Laminate flooring & hardwood flooring

Mini digger and driver hire

Electrical installations including
Building Regulation part P certification

Roofing repairs carried out

Conservatories, UPVC windows

‘BEDFORDSHIRE’S PROFESSIONAL BUILDER’

01525 872762 / 07850 803021

email: psbsltd@btconnect.com

DAVID JAMES KITCHENS

Luxury Handcrafted Kitchens

☎ 01525 864921



2 The Courtyard | 13 High Street | Clophill | Bedfordshire | MK45 4AB
T: 01525 864921 | E: davidjameskitchens@gmail.com | www.davidjameskitchens.net

ARCHITECTURAL DESIGN AND SURVEYING SERVICES

**Professional architectural design services provided
for all types of private residential building projects
with all necessary council approvals obtained**

We offer a free initial consultation/home visit where we provide project-specific guidance and an estimate of fees or why not pop into our office at

The Courtyard, r/o 13 High Street, Clophill

No VAT is payable for design and drawing services on residential projects

We also provide advice & assistance with Insurance Claims, Maintenance & Repair issues and Party Wall Surveying Services



01525 862457 | info@cdmsd.co.uk | www.cdmsd.co.uk

Bring in this advert for a 10% discount on our fees



Coates Dixon & Mitchell
Surveying & Design

Mobile Hairdresser

Reasonable prices

**Reduced price for 2 or more
clients per household**

Senior Citizens discount

Text or call Corrane on

07783 622602

01525 630740



mobile beauty treatments to fit in with busy lifestyles



...because everyone deserves to be pampered

Hot stone and Swedish massage
Manicures & pedicures (Shellac gels available)

Waxing

Eye treatments

Facials

Affordably priced... all with the convenience and
comfort of being in your own home

Gift vouchers available

For more information and to make
an appointment please contact:

Elizabeth Warfield (member of BABTAC)

Tel: 07816 789071

Email: lizziewarfield@hotmail.co.uk

Welcome to Clophill St Mary's C of E Lower School and Nursery

St Mary's
CLOPHILL
C of E SCHOOL

St Mary's is a Voluntary Aided Church of England Lower School based in the village of Clophill. We are a small friendly village school with close links to the local community, taking children aged from 2 years 7 months to 9 years.

St. Mary's is a Values Based school which provides children with a framework for living, tightly woven into the positive Christian ethos of the school.

Our vision at St Mary's is to provide a secure, inclusive and stimulating child centred environment, where all children are inspired to achieve their full potential.

Our aim is that every child will develop as a caring, respectful member of the community and society as a whole. We will achieve this through a creative curriculum based on our values, reflecting the Christian ethos of our school.

**Please call us on 01525 860206
to arrange a visit**



THE CHURCH OF ENGLAND
DIOCESE OF
ST ALBANS



High Street, Clophill, Bedfordshire, MK45 4BE

Tel: 01525 860206 stmarysclophill@cbc.beds.sch.uk www.stmaryslower.info

TREE SERVICES

- 🌳 Fully qualified and insured
- 🌳 Large or small trees
- 🌳 All aspects of tree work undertaken
- 🌳 Hedge trimming
- 🌳 Free quotes

Michael Martin

t: 01525 860771

m: 07598 767753

e: mmtreeservices@outlook.com



For Paws

1-2-1 Dog Training & Behavioural Consultations

PLUS

- Dog walking • Puppy pop-ins • Cat feeding • Pet drop-ins
(we do everything from cleaning out hutches to putting your chickens to bed)

For more information go to **www.forpaws.info** or
contact **Jo Deeks** Dip Dog Psy IMDT (formerly Stringer)
on **07576 854184**





Welcoming children from **2 years** of age

Whether you live in Clophill or further afield, our aim is to help your child to become a confident and secure independent learner who seeks out new experiences and discovers new things, soaking up knowledge through exploration and investigation.

In the setting of Clophill Village Hall we have access to a fantastic outdoor area. We'll be going out in all weathers using the sky as our roof and the earth as our carpet.

clophillpreschool@gmail.com

07732 872685



Why not
come and
see us?



Vehicle Repair and Service Centre

Autoeffects

- Complete colour changes & Resprays
- Dents, scuffs and scratches
- Body styling kits
- Crash repairs
- Servicing at competitive rates
- MOT's arranged
- Window tinting
- Complete retrim and repair
- Fitment of parking sensors
- Free estimates
- Collection and delivery service
- All work guaranteed
- On-site colour mixing
- Insurance work undertaken (courtesy car available for non-fault)
- Private and fleet customers welcome

If you have a digital camera, e-mail us a picture of the damage to your vehicle, and we will call you, don't forget to leave a contact telephone number!

***If you are passing, why
not pop in and see us!***



FREE

Car valet
with every
service booked
& on presentation
of this flyer!

Auto Effects Limited
College Farm, Park Road, Westoning
Bedfordshire MK45 5LA

Tel: 01582 883322 Fax: 01582 883372

Mobile: 07811 443948

Email: sales@autoeffects.co.uk

www.autoeffects.co.uk

All major credit cards accepted

01582 883322








For a free quote
please telephone

SEALAWN BOARDING CATTERY

126 High St, Clophill, Beds, MK45 4BL



Situated around a private lake within 8 acres of Bedfordshire countryside, this stunning and peaceful setting is exclusively for cats

-  Inspection visits most welcome
-  Open 7 days a week except Public Holidays
-  Highest standard of hygiene & cleanliness observed
-  Heated accommodation with large covered external runs
-  Shared boarding available to cats from the same household
-  All ages of cats welcome
-  Collection and delivery service available

Established for over 30 years, the highly competent team of staff at Sealawn look forward to welcoming your cat for the ultimate care experience whilst you are away from home

Contact us for a full colour brochure

Telephone: **01525 860585**

Email: **sealawn@btinternet.com**

Visit our website: **www.sealawn.com**

NO SALESMAN, NO PRESSURE, NO GIMMICKS Windows, Doors & Conservatories At A Sensible Price



- ✓ FASCIAS ✓ SOFFITS ✓ GUTTERS, ALSO
- ✓ ALL COLOURS & FINISHES
- ✓ FREE K GLASS -
MEANING HEAT LOSS REDUCTION
- ✓ INSTALLATIONS RANDOMLY CHECKED BY
INDEPENDENT GOVERNING BODY
- ✓ FREE ESTIMATES
- ✓ FULLY INSURED
- ✓ 10 YEAR INSURANCE BACKED GUARANTEE



Contact: ANDY WOOD

150A CLOPHILL ROAD MAULDEN BEDFORD MK45 2AE

07796 272539 or 01582 536944



**AM WINDOWS
CONSERVATORIES
& DOORS**



...WE TAKE THE PANE OUT OF GLAZING



The Happy Place.co.uk

On the Green beside the Post Office every Friday
3.30-7.30pm

We are your local mobile fish and chip van, we have been parked on the green every Friday for the past 6 years.

We serve only the highest quality produce, cooked fresh to order and served to you by our friendly staff.

Why don't you pop down and come and
Try Our Fry!

To avoid waiting in the cold, give us a call to

place your order on: 07833 786108

A big thank you to all our customers who have loyally supported us over the past couple of years.

Clophill

Mace

Post Office & Stores

- Fresh bread & dairy produce
- Newspapers & magazines
- Confectionery & tobacco
- Wines, beers & spirits
- Cards & stationery
- Household goods
- Baby products
- Toys & gifts
- Dry cleaning
- Photocopying
- Shoe repairs
- Post office counter services



Shop Hours

Mon - Sat 7.30 - 7.30 | Sun 8.00 - 1.00

Post Office Hours

Mon, Tues, Wed, Fri 9.00 - 1.00, 2.00 - 5.30 | Thu, Sat 9.00 - 1.00

THE GREEN, CLOPHILL 01525 860988

Proprietors:
Deepak & Daksha Chandarana

HIGH QUALITY CARPET, UPHOLSTERY & LEATHER CLEANING

**Ring Steve
01582 882620**

Email: steven@stevenwildman.co.uk

STUART DREW ELECTRICAL SERVICES

**MEMBER OF THE ECA
PART P CERTIFIED QUALIFIED TO 17TH EDITION**

From extra lights & sockets, to re-wires. Fault finding and electrical safety certification. For a professional, courteous service with free estimates & all work guaranteed, please call me

29 Lincoln Way
Harlington
Beds
LU5 6NG

**Fully qualified & insured
30 years experience**

Telephone:
01525 875965
07941 812662

Markham Architectural Salvage

www.markhamreclaimed.co.uk

Reclaimed Timber Specialists

**Oak Beams – Doors – Flooring – Bricks
Bespoke Furniture – Landscaping Materials
Mirrors – Roofing Materials**

Opening Hours: Monday Friday 9am – 5pm Saturday 9am – 1pm

Tel: 01525 876428 or Mobile: 07766 051307

Upper East End Farm, Goswell End Road, Harlington, Bedfordshire, LU5 6NU



GARDEN DOCTOR

Rob McLeod
Pruning Specialist

Professional, Local, Experienced

- * All tree and hedge work undertaken
- * High standard of work
- * Rubbish cleared from site
- * Free Quotations
- * Local, reliable service you can trust

Tel: 07763 239340 or 01525 861568
email: garden.doctor@btinternet.com

Call the Garden Doctor and bring Good Health to your Garden



Tree Surgery & Removal
Shrubs & Fruit Trees
Pruning & Spraying
Fully certificated and insured

SHEFFORD BUILDING SUPPLIES LTD

44 HIGH STREET, SHEFFORD, BEDS

Key Cutting
Tools
Timber
Sheet Materials
Gardening
Paint



Gas
Electrical
Plumbing
Sand & Cement
Domestic
Ironmongery

Tel: 01462 813381

TRULY AN ALADDIN'S CAVE

Free delivery



Daily activities available at the Centre

- **Complementary Therapies** - Massage, Reiki, Osteopathy, Chiropractice, Shiatsu, Counselling, Bowen Technique, Alexander Technique and more...
- **Regular Classes** - Yoga, Meditation, Pilates, exercise classes, Qi Gong, story telling, drumming, photography, Yoga for pregnancy and more
- **Workshops/courses** - Throughout the year we have numerous workshops, courses led by local and internationally known teachers.

3 Venue Rooms & 14 Acres of Land for Event Hire:-

Meetings, Training, Marquee Events, Weddings, Rehearsals & Club events ...

For further information visit www.clophillcentre.co.uk

Contact: Richard & Katarina Diss 01525 862278 info@clophillcentre.co.uk
The Clophill Centre, Shefford Road, Clophill, Beds MK45 4BT



In an uncertain financial world you can be certain of good advice.

We can offer you complete financial advice with a friendly and professional service at your home or our office.

Hills-Howson Financial Services

The Old Post Office
53 High Street
Clophill
Beds MK45 4BE

Tel: 01525 861803
www.hills-howson.co.uk
hills.howson@btconnect.com

Including:-

Investments

Pensions

Protection

Annuities



Poppins Chimneys

**Chimneys Swept
Wood and Multifuel Stove
Installation & Liners**

Great Service - Great Price!



01525 860424 or 07858 688785
mark@poppinschimneys.co.uk

R.G.S. TILING

Bathrooms, Kitchens, Conservatories - Walls & Floors
Specialist in all aspects of ceramic tiling
30 Years experience

Tel: 01525 860849

Mob: 07900 249810

Email: simzie64@hotmail.com



Lady Gardener

Do you need help to keep your garden looking good
all year round.

Would you like to plan and plant a new
or existing border.

For regular maintenance or a one off visit
Please phone Julie on 01525 861864

Sarah from Grooms – Mobile Hairdresser

Would like to welcome all new and existing clients as she goes mobile full time

Group bookings and
senior citizen discount available

Tel 07595 046667

AIMS

Tim Kemp BA FCA
Top Barn Rectory Road
Steppingly MK45 5AT

TEL/FAX : 01525 717141
MOBILE : 07900 823 012
www.aims.co.uk
e-mail: timk@aims.co.uk

- ♦ **Professional** service providing for all your accounting and tax needs
- ♦ **Practical** advice based on 20 years experience in **running** businesses
- ♦ **Personal** approach with fixed fees relevant to the work **you** need
- ♦ **Friendly, local** accountant supporting the community for over 20 years

Please call for a free, no-obligation initial meeting

ACCOUNTANTS FOR *business*

PPM
PROFESSIONAL PEST MANAGEMENT LTD
COVERING ALL PESTS
COUNCIL APPOINTED CONTRACTOR
OPERATING THROUGHOUT BEDS, HERTS & BUCKS
PPM Limited Email: matt@ppmlimited.co.uk
Unit 7a Old Bridge Way, Shefford,
Bedfordshire SG17 5HQ

CALL
01462
811818
OUT OF HOURS
07990 970908 OR
07788 742052

"AS FEATURED ON ITV'S INFESTED"
AND "THREE COUNTIES RADIO"

npta NATIONAL PEST TECHNICIAN'S ASSOCIATION



W&H PEACOCK Established 1901

AUCTIONEERS & VALUERS

Auction Every Saturday

Viewing every Friday 8.30am - 8.00pm

Entries for our weekly sales can include:

Antique & Modern Furniture • Clocks • Books
Ceramics & Glassware • Pictures & Prints • Bicycles
Jewellery & Watches • Garage Tools & Equipment
Household Electrical Items • Timber & Building Materials
Office Furniture & Equipment • Retail Products & Stock
Horticultural & Commercial Equipment • Vehicles
Garden Furniture & Effects • Collectables

COLLECTION SERVICE AVAILABLE



Bedford Auction Centre 26 Newnham Street, Bedford MK40 3JR



01234 266 366 www.peacockauction.co.uk

THE COMPUTER MAN



Got a problem with your computer and don't know what to do? Suffering with a virus or spam?

Don't hesitate! Ring your local computer expert

**Remote repairs or home visits
(Day, evening & weekend)**

**Lap top/desk top loan
(Free pick up & drop off in local area)**

Comprehensive health check from £35 (**Special Offer** £35 - normally £40)
Refurbished fl at screen available from £15 • Refurbished base units available from £99



Contact Stephen Amos
07976 718567
the.computerman@ntlworld.com



ROGER STOREY

YOUR LOCAL PAINTER AND DECORATOR

Friendly and Reliable Service

Many Years Experience

Please phone: **01525 861253** or **07800 777615**

NEWAYS™

Independent Distributor.

There is a better way

Enjoy additional income
Give your family
a healthier
home.



Take
positive
action now

Phone Andy: 0781 765 1896
www.VibrantLiving.iNeways.eu

CTP CONSTRUCTION

Local Building Company

Established for over 25 years

U.K. Trades Approved

No job too small - Competitive prices

Free estimates given on all Building Work

Tel: Silsoe **01525 860105**

www.ctpconstruction.co.uk



Music Tuition

Flute and Music Theory

Susan York MA, BA (Hons), LTCL, MSTAT
Clophill (01525) 860711



Baths, Toilets &
Showers
Sinks and Taps
Guttering
Leaks and Burst Pipes
Drainage
Handyman jobs also



Silsoe based
No call out fee – free estimates
Fully insured and guaranteed
No job too small
07720 723653 01525 864859
info@betaplumbing.co.uk
www.betaplumbing.co.uk

Foot Health Practitioner

Corns, Hard Skin, Verruca, Fungal Nail Infection,
In-growing Toe Nails, Diabetic Foot Care, Athlete's Foot,
Pedicure, General Nail Cutting etc.

In the comfort of your home or at my clinic

Ann Gibbons MCFHP. MBAFHP.

Competitive Rates

Tel: 01462 813252 Mob: 07872 315763

Web: www.shamrockclinic.co.uk

For opening hours and other details please refer to my website

Silsoe Newsagency

24 High Street, Silsoe, Beds.

Telephone: Silsoe 861522



- NEWSPAPERS & MAGAZINES
- FRESH BREAD & DAIRY PRODUCE
- CONFECTIONARY, TOBACCO
- CARDS & STATIONERY
- WINES, BEERS & SPIRITS
- FRUIT, VEGETABLES & GROCERIES
- HOUSEHOLD GOODS, DRY CLEANING
- CASHPOINT MACHINE, PHOTOCOPYING
- NATIONAL LOTTERY
- PAYPOINT AGENT

HOURS OF OPENING

6.30AM - 9.00PM

8.00AM - 9.00PM

8.00AM - 5.00PM

MONDAY TO FRIDAY

SATURDAY

SUNDAY

All major Credit/Debit Cards accepted

Amphill and Flitwick Physiotherapy Clinic



The very best physiotherapy care from a friendly approachable clinic with ten highly trained Chartered physiotherapists
Daytime, Saturday and evening appointments
We also offer:
Reflexology ~ Pilates ~ Nutrition ~ Homeopathy



7 Station Square - Flitwick - Beds - MK45 1 DP
Telephone: 01525 720882
Fax 01525 720886
www.chartered-physiotherapy.co.uk

E.T. Accountancy Services

Experienced Chartered Accountant and Chartered Tax Adviser based in Clophill providing a full range of accountancy and taxation services to businesses and private individuals.

To arrange a free initial consultation please telephone me on
01525 590465 or email emma@et-accountancy.co.uk

Chartered Accountant and Chartered Tax Adviser

Emma Thoulass FCA CTA www.et-accountancy.co.uk 01525 590465

Chapman & Kirby Heating

Gas, Plumbing & Heating Installations

Gas Safe Registered

Boiler Servicing & Maintenance



Call us now

Tel: 01525 861255 Mob: 07831 132308

Email: info@chapmanandkirbyheating.co.uk

1C, Old Silsoe Road, Clophill, Beds., MK45 4AR

A L & G ABBOTT

Funeral Directors

~ Established 1832 ~

An independent family business which
has provided a sympathetic and professional
service to our local community
for over 170 years.



- 24 Hour Personal Service
- Pre-Paid Funeral Plans
- Private Chapels of Rest
- Floral Tribute Service
- Memorial Showroom
- Civil Services Available

150 Bedford Road, Kempston, MK42 8BH

Telephone: **01234 843222**
(24 hours)

www.abbott-funerals.co.uk



The UK's No.1 Lawn Care Company



- Scarification
- Aeration
- Lawn Fertilising
- Weed Control
- Moss Control
- Water Conserver
- Pest and Disease Management



GreenThumb has a variety of treatment programmes to suit your pocket that include our traditional 'pay-as-you-go' service and our new, pay monthly, Direct Debit programmes, where you can save up to 25% annually.

Our treatments start from £5 per month, that's cheaper than D-I-Y and without the hassle!

Call your local branch today for a FREE lawn analysis and no obligation quote.

0800 0111 222

GreenThumb
LAWN TREATMENT SERVICE



Find us online at: www.greenthumb.co.uk



EST.
1989

- Suppliers of traditional and modern equipment
- Working whirlpool & spa baths, power & steam shower systems on display
- Over 40 settings on display
- Complete installation service if required
- Personal friendly service from a family run business
- Wall and floor tiles
- Accessories
- Mirrors
- Bathroom furniture
- Heated towel rails
- Saunas
- Bathroom cabinets

SHEFFORD 01462 627002

www.bathroomvogue.com

Unit 4A, Shefford Industrial Park, St Francis Way, Shefford SG17 5DZ



Woburn Country Foods **BUTCHERS & FARM SHOP**

Specialists in Bedfordshire Meat



**UNBEATABLE QUALITY
REASONABLY PRICED**



Plus...Fresh Bread, Free Range Eggs, Cheese, Homemade Cakes, Jam, Chutney,
Fruit Juices, Cooking Sauces, Plants, Gifts, Cards & More!

Local Fresh Fruit & Veg



LOCAL MEAT FROM LOCAL FARMERS

West End Farm, London Lane,



Haynes West End (Left off A6 towards Bedford)

MK45 3RA Tel: 01234 740300

Open Tues to Sunday

- specialist in alloy wheel repairs
- powder coat primers & lacquers
- colour change service
- friendly reliable personnel
- collection & delivery service
- cracked alloy welding
- fully insured
- diamond cut wheel repairs
- competitive rates

mintalloys
complete alloy wheel refurbishment

Tel: 01525 860069

www.mintalloys.co.uk

Wrest Park, Silsoe, Beds, MK45 4HS

DAMAGED ALLOYS ?

Mint Alloys offer a complete alloy wheel refurbishment service that will make your damaged alloys look like new again.

Please call in to our workshop based at Wrest Park, Silsoe or
call us on

01525 860069
for a quotation

Before



After



We supply and fit tyres at competitive prices



RICHARDSONS OF AMPHILL LTD

ESTABLISHED 1944



Fine Jewellery
Antique Clock Restoration
Gold Buying Centre



The Market House, 6 Church Street, Ampthill, Bedfordshire, MK45 2EH

Telephone: 01525 403474

www.richardsonsofampthill.co.uk

Stephen's Plants

at Maulden Garden Centre on the A507 bypass (near A6 / Clophill)



for your

Seasonal and hardy plants
Vegetable seeds and plants
Hanging baskets and tubs
plus composts and fertilisers
all with EXPERT ADVICE *and a smile*

Telephone: 01525 861696

Conifer Kennels & Cattery

THE CAUSEWAY CLOPHILL

TELEPHONE 01525 860339



The home of
LYRENSTAN

STANDARD LONG HAired DACHSHUNDS

HEATED KENNELS & CAT CHALETs WITH INDIVIDUAL RUNS
INSPECTION WELCOME ANYTIME

Wrest Park Day Nursery, Silsoe

Come and visit our beautiful nursery and pre-school based within the grounds of Wrest Park. We offer care for 0-5 year olds 8am to 6pm Monday to Friday for 51 weeks of the year.

We were Rated 'Good' by Ofsted in May 2014 and they commented that 'Staff are enthusiastic, model good social behaviour to children and offer frequent praise' (Ofsted 2014).

We offer all day sessions, am or pm sessions or a 9-3 'school day' session. We accept childcare vouchers and 2,3 and 4 year old funding.

Please call us on 01525 861743 or info@wrestparkdaynursery.co.uk
www.wrestparkdaynursery.co.uk



BURGLAR ALARMS

New Alarms Fitted or Upgrade Existing Alarms

BURGLAR ALARMS

We fit New Alarms - Wired or Wireless Systems
We can service and maintain your existing alarm

CCTV

We fit high quality systems to maximise your security.
Access your CCTV via the internet or mobile.

DOOR ENTRY

We fit a range of quality video and audio intercoms
to suit your needs.

*We are a family run business with over 35 years
experience in home security and crime prevention.*



www.maximumsecuritysystems.co.uk

Contact:

01582 864138 / 07746 111520

For a free quote and consultation

SIMON BISCOE LANDSCAPES

Decking-Fencing-Raised Vegetable Beds-Turfing-Maintenance-Paving-Planting
Complete Garden Design and Build Service

Tel: 0770 279 1993

email:sblandscapes@live.co.uk

Washing Machines Dishwashers Dryers Repairs Servicing Sales



A local family business offering
a quality service at a competitive price
Est. 1981

Tel: CLOPHILL 860148

or Tim Downing direct on 07969 545 276

A member of the White Goods Trade Association
Fully Insured



BEFORE



& AFTER



MISTY DOUBLE GLAZING ?

KEEP YOUR WINDOW FRAMES....

....WE JUST REPLACE THE GLASS!

- UPVC • Aluminium • Or Wood

Because we replace just the glass the repair is a

FRACTION OF THE COST

of a complete replacement window.

mistydoublinglazing.co.uk

01525 876808

QUALITY GLAZING SERVICES

We also replace Broken...

- Glass • Handles • Hinges
• & Locks

**and Repair... Patio Doors &
Conservatories!**

**UPVC
frame
cleaning
service
available**



NEVILLE

FUNERAL SERVICE

Established 1875

"Reassurance when you need it most"

Serving the people of Bedfordshire since 1875

Neville Funeral Service

inc. George Squire & Sons since 1976

24 Clifton Road

Shefford SG17 5AE

t: 01462 813258

e: shefford@nevillefuneralservice.com



Neville Funeral Service

The Old Church Flitwick Road

Amphill MK45 2NT

t: 01525 406132

e: amphill@nevillefuneralservice.com



www.nevillefuneralservice.com

Root 'n Branch

Your Local Friendly & Reliable Gardener

All aspects of Garden Maintenance undertaken
• PRUNING • MOWING • WEEDING • PLANTING • HEDGING

Southfields, Shefford
email: whooley@hotmail.co.uk

Tel: 07771 537385

Public Liability
Insured

ADAM IN YOUR GARDEN

**TREE SURGERY, HEDGE TRIMMING,
TURFING, FENCE MAINTENANCE,
DECKING, PATIO CLEANING**



Qualified, Fully Insured, Competitive Rates
Free Estimates

TEL: 01582 518954 MOB: 07828 490360

Web Site: www.adaminyourgarden.co.uk

ANDREW BAKER WINDOWS

9 SHEFFORD ROAD
CLOPHILL BEDS
MK45 4BT

SPECIALISING IN UPVC WINDOWS,
DOORS, CONSERVATORIES,
FASCIA, SOFFITS, GUTTERS AND
CLADDING. ALSO AVAILABLE FOR CARPENTRY
WORK. NO JOB TOO SMALL OR LARGE.

20 Years experience.
Free local quotes.

FENSA

Fensa Registered
FIVE YEAR GUARANTEE

Contact Andrew: **01525862804 / 07825017855**

Email: **abakerwindows@gmail.com**

Stephens

Professional & Reliable Removal Service

- ☐ Household & Office Removals & Storage
- ☐ Full Packing Service & Materials
- ☐ Containerised Storage
- ☐ Experienced, Professional Staff
- ☐ Comprehensive Insurance
- ☐ Quick & Free Estimates

Luton 01582
Hitchin 572967
Stevenage

VISA Maestro InterCard



Mem No S052

www.stephensremovals.com

Local, National & International Removals & Storage

Stephens Removals are also a franchise of the Bishops Moves Group.

AAAAA STEPHENS REMOVALS LTD

McCaffrey

Your central resource for residential
 build, refurbishment and maintenance



General Building Works
 Extensions
 Internal Refurbishment/Alterations
 Garage Conversions
 Loft Conversions

Brickwork
 Carpentry
 Painting & Decorating
 Purpose made Joinery
 Bi - Folding Door Applications

Plumbing and Heating
 Electrical installations
 UPVC/Timber Windows
 UPVC Conservatories

T. 01525 861041

E. info@mccaffreybuild.co.uk

W. www.mccaffreybuild.co.uk



WEC, BUILDING 52, WREST PARK,
 SILSOE, BEDFORDSHIRE, MK45 4HS

COMPANY NUMBER: 7240869

MCCAFFREY BUILDING CONTRACTORS LTD



OSTEOPATHY

Deborah Pedley BSc (Hons) Ost.

Registered Osteopath

**The Clophill Centre for
Complementary Therapy**

Clophill Fruit Farm,
Shefford Road
Clophill

- Cranial & Structural Osteopathy
- Neck & Low Back Pain
- Infant Feeding & Sleeping Problems
- Muscle Tension
- Sports Injuries
- Arthritic aches & pains
- Headaches

To book appointments call: **07969 921112**

GARDEN SERVICES FOR MID BEDS



Grass Cutting, Hedge Trimming,
Shrub Pruning, Mole Control
and General Maintenance
Local and Reliable Service

Ring John on 01525 874690
or Mobile 07710 452436
John Abraham your local gardener



MB

ACCOUNTING SERVICES

accounting solutions for the

Self-Employed and ***Small Business***

including

Bookkeeping • Accounts • Tax returns • Cash flows

For a totally confidential service at **very competitive rates** contact
Richard Fairholm T: 01525 861087 M: 07714189994 E: mbaccounts@btinternet.com



rincon tuition – Spanish & Maths

Expand your knowledge. Boost your confidence

01525 860743

Exam techniques and preparation, revision and practice papers.

Spanish for business or pleasure, all levels. Skills development.

Maths all levels: KS1, KS2, KS3; SATs and GCSE practice papers

CRB certified & references – Reasonable rates

01525 860743 - 07952 667814

rincontuition@aol.com

Hire Clophill Village Hall



Wedding Receptions

Birthdays & Special Occasions

Dances and Discos

Club & Community Meetings & Activities

Phone: 07821 643 936

Mail: Clophill.villagehall@gmail.com Web: www.clophillvillagehall.co.uk



**SPECIALISTS IN KITCHEN
& BATHROOM FITTING
FLOOR & WALL TILING**

**FREE DESIGN, ADVICE &
NO OBLIGATION QUOTES**

“Our success is your satisfaction”

Tel: Darren – 01234 307753 Mob: 07866 699822

e-mail: darrenmeyern@googlemail.com

Advertisers index

Architectural Services

Coates Dixon & Mitchell

26

Auctioneers & Valuers

W&H Peacock

37

Bathroom Services

Bathroom Vogue

42

Builders & Carpenters

CTP Construction

38

McCaffrey Build

49

Peter Sharpe Building Services

25

Stuart Benson Building Projects

IFC

Building Supplies

Shefford Building Supplies Ltd

33

Carpet Services

Carpet & Upholstery Cleaning

32

Car Services/Repairs

A&F Motors Ltd

IFC

Auto Effects Ltd

29

Mint Alloys

42

TC Coomber Car Services

BC

Chimney Sweep

Poppins Chimney Sweep

35

Cleaning Services

Merry Maids

IBC

Computer Services

Compu-Doc

24

The Computer Man

37

Electrical Services

Stuart Drew Electrical Services

32

Financial Services

AIMS Accountants

36

ET Accountancy Services

40

Hills-Howson Financial Services

34

MB Accounting Services

50

Food Suppliers

Woburn Country Foods

43

Funeral Services

AL&G Abbott, Funeral Directors

41

Neville Funeral Service

47

Garden Services

Adam in your Garden

48

Garden Doctor

33

Garden Services for Mid Beds

50

Green Thumb Lawn Treatment

42

Lady Gardener

35

Michael Martin Tree Services

28

Root 'n Branch

48

Simon Biscoe Landscapes

46

Stephen's Plants

44

Health & Beauty

Amphill & Flitwick Physiotherapy

40

Deborah Pedley Osteopathy

50

Mobile Hairdresser

27

Molly Coddle

27

Neways Independent Distributor

38

Sarah from Grooms - Mobile hairdressing

35

Shamrock Clinic - Foot Health

39

The Clophill Centre

34

The Tanning Salon

IBC

Home Improvements

David James Kitchens

26

Dome Interiors

51

Markham Architectural Salvage

32

RGS Tiling

35

Roger Storey - Painter & Decorator

38

Tomkinson's Stained Glass Ltd

24

Jewellers

Richardsons of Amphill Ltd

44

Music Lessons

Susan York Music Tuition

38

Newsagents

Silsoe Newsagency

39

Nursery Schools

Clophill PreSchool

29

Clophill St Mary's C of E

27

Lower School and Nursery

24

Clophill Toddler Group

45

Wrest Park Day Nursery - Silsoe

45

Pest Control

PPM Limited

36

Pet Services

Conifer Kennels & Cattery

44

For Paws (Dog Training)

28

Sealawn Boarding Cattery

30

Plumbing & Drainage Services

Beta Plumbing

39

Chapman & Kirby Heating

40

Drain Doctor

BC

Post Offices

Mace Post Office & Stores

31

Print Services

Amphill Print Centre

IFC

Public Houses

The Stone Jug

24

Removals & Storage

Stephens

49

Repair Services

Tim Downing Repair Services

46

Security Services

Maximum Security Systems

45

Take-aways

The Happy Plaiice

31

Tuition Services

Rincon Tuition (Spanish & Maths)

51

Village Hall

Clophill Village Hall

51

Windows/Replacement

Andrew Baker Windows

48

AW Windows

30

Misty Double Glazing

46

IFC = Inside Front Cover

IBC = Inside Back Cover

BC = Back Cover

Ads from as little as £50 per year

For further information about advertising in Spotlight,
please contact our Advertising Manager at ads@clophillspotlight.co.uk

The Tanning Station & Pebbles Beauty

- Sunbeds
- Massage
- Eyelash Extensions
- Bio Sculpture
- Pedicure
- Spray Tans
- Footcare Specialist
- LVL
- Facials
- HD Brows
- LCN Nail Extensions
- Manicure
- Hot Stone massage
- Waxing
- Jessica GELeration
- Threading



2 Steppingley Road, Flitwick, Bedfordshire MK45 1AJ
01525 720 095 www.tanningstation.co.uk



Opening Times

Monday - Tuesday	09.00 - 19.00
Wednesday - Thursday	09.00 - 21.00
Friday	09.00 - 19.00
Saturday	10.00 - 16.00
Sundays & Bank Holidays	CLOSED

merry maids

Relax. It's Done.®



Come home to a job well done.



Whatever your idea is of time well spent, we're pretty sure it doesn't include dusting, vacuuming or scrubbing floors. That's our job. Merry Maids home cleaning services gives you back the time you want to concentrate on the things that you enjoy.



- Domestic cleaning service for your home
- Customised to meet your needs
- Regular or one off cleans
- Trained & uniformed teams
- Full insurance
- Satisfaction guaranteed

Call Merry Maids on 01525 860957
for a free no obligation quote.
bedford@merrymaids.org.uk

merry maids.co.uk



DrainDoctor®

PLUMBING & DRAINAGE

24 Hours a day... 7 Days a week... 365 Days a year

Your Local Expert Plumbing & Drainage Service

**BEDFORD
& KEMPSTON**

01234 742 900

**LEIGHTON
BUZZARD**

01525 779 818



**BLETCHLEY &
MILTON KEYNES**

01908 849 814

**SANDY &
BIGGLESWADE**

01767 662 040

**FLITWICK
& AMPHILL**

01525 779 818

- All Emergency Plumbing
- All Drainage & Blockages
- No Call Out Charge
- Pre-fixed Prices
- Work Guaranteed

FREEPHONE ALL AREAS

0800 019 2416

T.C. COOMBER



**MOT'S CLASS 4/7
SERVICING & REPAIRS
CAR & COMMERCIAL
TYRES & EXHAUSTS
AIR CONDITIONING
DIAGNOSTIC CODE READING**

AMPTHILL

01525 406330

**Collection
& Delivery**
SERVICE AVAILABLE
Please ask

UNIT F, AMPTHILL INDUSTRIAL ESTATE, STATION RD, AMPTHILL, MK45 2QY