

Vol 39 | No.8

FREE

# CLOPHILL SPOTLIGHT

OCTOBER 2017



**LOVE YOUR  
LOCAL NEWS**

# AMPTHILL PRINT CENTRE

**DIGITAL PRINTING  
DESIGN & MARKETING  
DIRECT MAIL**

*and much more...*

...and we're right on your doorstep at

Unit 24 Station Road Ind Est, Ampthill, MK45 2QY  
(Just off the A507 Ampthill bypass, past the Post Office)

#### WE PRINT...

- Stationery
- Newsletters
- Menus & Tent cards
- Brochures
- Flyers & Leaflets
- Catalogues
- Books & Booklets
- Direct mail
- Training Manuals
- Banners & Posters
- Greeting cards
- Calendars
- Labels & Stickers
- NCR pads
- Folders
- Exhibition panels
- CD/DVD duplication
- Photocopying

3 DAY STANDARD SERVICE | SAME DAY AVAILABLE

[www.fidelityprint.co.uk](http://www.fidelityprint.co.uk)

Get a quote 01525 300001 [quotes@fidelityprint.co.uk](mailto:quotes@fidelityprint.co.uk)

**fidelity**<sup>®</sup>

Unit 24 Station Rd Ind Est, Ampthill



## MOTORS LTD

**Tel: (01525) 860292**

**Tel: (01525) 404919**

**208 Clophill Road, Maulden, Bedfordshire MK45 2AF**  
**89 Oliver Street, Ampthill, Bedfordshire MK45 2SA**

**CAR AND COMMERCIAL VEHICLES  
ALSO CLASSIC & AMERICAN CARS  
SERVICING – REPAIRS – BREAKDOWN  
SPRAYING – M.O.T.**



### **Stuart Benson Building Projects**

**Design, Build and Maintenance including Interior Refurbishments,  
Kitchen / Bathroom fitting, Tiling, Flooring, Skirting boards, Doors  
Garage conversions. Exterior Decking, Patios, Driveways  
Garden Offices/ Sheds**

**Tel: 07946 579862 or 01525 403083**

**Email: [benson.stuart@.googlemail.com](mailto:benson.stuart@.googlemail.com)**



## A word from the Editor...

### *Well helloo...*

I have to say what a FANTASTIC Scarecrow Festival we had last month. Since moving to Clophill from London 11 years ago, I've really embraced the festival because it's such a wonderful community event

I love that it gives me the opportunity to spend time with my neighbours as we work together to make our scarecrows – with plenty of laughs, coffee and wine in the process.



The weekend itself continues the community spirit. It was such a pleasure walking around the village and seeing so many scarecrows that had been lovingly made by residents. It took me quite a long time to get around them all as I kept stopping to chat to people I knew. And all topped off with tea and cake in the packed-out church.

Clophill – I can't think of anywhere better to live!

***See you back here in November.***



## The magazine staff

EDITOR/ADVERTISING  
MANAGER

Helen Gent  
editorial@clophillspotlight.co.uk  
ads@clophillspotlight.co.uk

864836

DESIGN MANAGER

Chris Abrahams  
cmabrahams@yahoo.co.uk

DISTRIBUTION MANAGER

Pete Liddle

860113

TREASURER

Richard Pearson

861110

COPY DEADLINE

**20th of the month**

You can also read Spotlight online  
**[www.clophillspotlight.co.uk](http://www.clophillspotlight.co.uk)**

# **FIREWORK NIGHT**

**AT**

**Clophill St. Mary's**  
CofE Lower School

**SATURDAY 4<sup>th</sup> NOVEMBER**

**GATES OPEN 5.30pm**

**FIREWORKS 7.15pm**

**BAR BBQ GAMES STALLS**

**IN ADVANCE FAMILY TICKET £15**  
**(2 ADULTS AND 2 CHILDREN) £1 PER EXTRA CHILD**

**IN ADVANCE - ADULT £6 / CHILD £3**

**ON DAY - ADULT £7 / CHILD £3**

**Tickets available from School**  
**Reception and Clophill Village Store**

**NO SPARKLERS ALLOWED**

**CHARITY NO.1062795**



# Remembering Clophill's Fallen

*Continuing our series of the centenary of Clophill's brave men who lost their lives in the First World War....*

October of 1917 brought news that Sidney Sharman had been killed in action at Passchendaele at the age of 22.

In 1911 Sidney worked as a farm labourer, living in Great Lane with his parents Josiah, also a farm labourer, and Emma, plus a brother and sister. He was an organ blower at the Parish Church for around seven years. At the time of his death his address was given as Jacques Lane.

Sidney enlisted and joined the 7th Battalion Bedfordshire Regiment in January 1917 and was posted to France the following July.

In 1917 the battalion was heavily engaged all year, culminating in the 1st Battle of Passchendaele in October. Sidney is commemorated in the Cement House Cemetery, Langemark-Poelkapelle, which is located 5 miles NE of Ypres. It was a strongly fortified German position, which the British struggled to take during the 3rd Battle of Ypres. Although the line ran through the outskirts of the village for some time, it wasn't until



the 22nd of October 1917 that the village was finally taken. The operation to take the village included the use of what was known as a 'Chinese attack', where dummy figures were raised above the trenches to fool the Germans as to where the attack would actually take place.

Amptthill News reported as follows: 'We regret to record the death of another of our boys in France. Pte. Sidney Sharman of the Bedfords was killed by shrapnel on October 19th (?). He had been in France for several weeks, and was going up into the trenches for the first time when the shell fell that caused his death.'

During the Great War, the 7th battalion lost around 800 men killed in action, with around another 7,000 being wounded or taken prisoner.



# Another successful scarecrow festival!

What a super Scarecrow Festival we had last month and so successful in many ways. We'd like to thank everyone who contributed. We had a fantastic response and we were so lucky with the weather.

The bi-annual event **attracted visitors from far and wide**. One lady arrived on her bike from Olney, while someone wrote on their voting form that they'd 'come from Durham and it was brill'. The whole village was buzzing as families with children walked around excitedly looking at all the scarecrows. It really was a wonderful community occasion.

The scarecrows themselves were fantastic. We had one abseiling down a wall, another balancing on a pole high in the air. There were scenes from Strictly Come Dancing and characters from Roald Dahl's books. Not to mention a tree hugger, pied piper, mermaid, gorilla and moles!

As ever, the tea and cakes went down a storm at the church – thank goodness we didn't run out. On Sunday, Deepak from the Post Office received a warm welcome when he arrived to hand out all the certificates and prizes.

The Scarecrow Festival was a true community event centred on the Church and for the benefit of the Church and we're delighted to report that the **final profit was £2,500**.

Thank you to everyone who participated as an exhibitor or as part of the voting public.

*Carolyn Cranswick, Coordinator of St Mary's Fund Raising Group*





## And the winners were...

### Adult

#### 1st

Them Pesky Moles

#### 2nd

Don't Text and Fly

#### 3rd

The Happy Wanderer

### Family

#### 1st

It's a Ten

#### 2nd

All Because the Lady Loves...

#### 3rd

Clophill You're 1 in a Minion

### Organisation/Group

#### 1st

The Tales of Roald Dahl

#### 2nd

A Children's Adventure  
on The Slade

#### 3rd

Flora Fashionista





# St Mary's School News

We're now back into the swing of school life after a lovely long Summer break. We've enjoyed welcoming all our new children into Acorn Nursery, Reception Class and within other classes in the school and hope their experience so far has been very positive.

Last month, Oak Class began their **swimming sessions** at Hilltop Swimming Club and both Oak and Rowan have started enjoying their football training sessions on a Wednesday afternoon. In September we also held a **Jeans4Genes day**.



## Our value for October is *Trust*

**Trust** – a belief in the honesty, reliability and strength of another, relying on someone or something without question or evidence. In school, we've been thinking about what it means to trust someone and how it feels to be trusted. You may wish to consider this – for relationships to work we need to trust others but in turn they need to trust us; we need to be reliable and honest for people to be able to do this.

### School play performance

Looking ahead, the children will be performing their school play for the over-65s in the village on the 4th December. Invitations will be sent out nearer the time, but please feel free to contact us beforehand to let us know if you'd like to attend – call 01525 860206 or email [generaladmin@clophillstmarysschool.co.uk](mailto:generaladmin@clophillstmarysschool.co.uk) Invitations will also be going to parents whose children are in the play who wish to bring their pre-school children.

## Acorn Nursery News



Exciting news – the new Acorn Nursery building at the front of the school is now open! Last month we held a special dedication service led by the Bishop of Bedford and attended by all the parents, helpers, governors and other friends of the school.

The nursery children had their first day in their new setting on Monday 18th September and they absolutely loved the new resources, especially our two-storey home corner.



Our theme this half term is **'All About Me'** so we'll be doing lots about ourselves, our families and friends, likes and dislikes. Some children have made a life-sized picture of themselves and made paper faces and a prayer hand. We'll be discussing the numbers of the houses they live at and making their homes out of boxes too. Parents have filled in, or updated, the 'About Me' on Tapestry, which helps us to get to know the children and their family members and what they like to do at home. This is often a good time to talk about our differences to each other and understanding that it's OK to be different. We'll also be introducing the children to Jesus and learning about our value of friendship, as Jesus is a friend to everyone.

Want to help us make the nursery even better? You can make a donation – go to [www.justgiving.com](http://www.justgiving.com) and search for Governors Clophill. Or visit our crowdfunding page at [www.justgiving.com/crowdfunding/governors-clophillstmarys?utm\\_id=2&utm\\_term=W8a2N7qzE](http://www.justgiving.com/crowdfunding/governors-clophillstmarys?utm_id=2&utm_term=W8a2N7qzE) If you'd like to contact the Governors just drop an email to [governors@clophillstmarysschool.co.uk](mailto:governors@clophillstmarysschool.co.uk)

- ***If you're looking for a nursery place for your child please do come along and have a look around.***

## **Important information for parents with children moving to Middle School or requiring a Reception class place September 2018**

Applications online: [www.centralbedfordshire.gov.uk/admissions](http://www.centralbedfordshire.gov.uk/admissions)

Online applications preferred but hard copy applications are available from the school office.

### **Deadline for both Middle School Place/Starting School Place is 15th January 2018**

We urge parents to make their applications ASAP and let the school office know if you have any questions or problems relating to your application.

#### **Contact**

Mrs Topliff on **01525 860206** or email [generaladmin@clophillstmarysschool.co.uk](mailto:generaladmin@clophillstmarysschool.co.uk)



CLOPHILL METHODIST CHURCH

# ***CHRISTMAS MARKET***



**Saturday 2nd December**

***12-4pm***

***Free Entry***



***Various stalls – wood  
turner, cakes, books, crafts and  
Christmas gifts***

***Plus tombola and raffle***



***Lunches***

***Tea, coffee & mince pies***

**FATHER CHRISTMAS ARRIVES AT 2PM**

**All proceeds to Clophill Methodist Church**

# Clophill & District Flower Club



A full hall welcomed back Rehka Naidoo with her demonstration 'A Floral Fairground'. During the evening there was much nostalgia about meeting up with friends in a fairground in our youth!

Rehka's first design was a **Rollercoaster** depicted with a lazy S-shape of green foliage and medillino sticks for the base, then variegated foliage, yellow gerbera and pink roses. To give the display some sparkle, she included fluorescent beads and sisal curls.



For her **Coconut Shy**, Rehka produced a boat-shaped piece of wood, in which she inserted pink Protea, pink cymbidium orchids, curls of cordyline, phormium seed pods and ornamental grasses. A final flourish came from bright pink sisal spheres.

Next came the **Waltzer** created in a large shallow dish, with six separate arrangements of the Anastasia green chrysanthemum and deep red Grand Prix roses. Rehka also used gold leaf and lavender along with circles made from straw and grapevine stems.

After our coffee break, an **Ice-cream Cone** – with a brown cone-shaped base and the ice-cream depicted by white bloom carnations – looked good enough to eat!

The **Helter-Skelter** was immediately identified by the audience. The curly base had been decorated with material-covered beads and to this Rehka added palm

leaves, sculptured fatsia leaves, pale purple anthuriums and liatrus along with orange celosia placed in deep into the arrangement. Lastly, green spray chrysanthemums were added.

Her final design was the **Merry-Go-Round**. The outline of a horse which had been decorated with ribbon stood at the base of the stand. Above that Rehka arranged mixed foliage, then added an abundance of flowers including red and pink roses, spray chrysanthemums – some green and others dyed dark blue – anthuriums and deep pink bloom carnations. Wired beads and satin ribbons finished things off beautifully.

During the evening, we were entertained not only by Rehka's skill interpreting the sideshows at a fair but also by her an insight into the courtship and arranged marriages she and her four sisters had to accept growing up in a traditional Indian family. All in all, it was another enjoyable evening at the Club.



- For further details of our Club and programme, please go to [www.clophillflowerclub.com](http://www.clophillflowerclub.com) or our page on Facebook.



Rotary Club of Barton le Clay's famous

# GastroQuiz



The quiz that tickles your tastebuds

**Silsoe Village Hall**

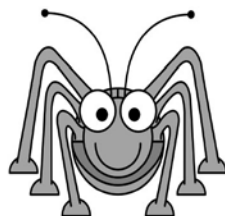
**Saturday 11th November – 7pm prompt**

Tickets £12 per head, to include supper. Bring your own drinks, glasses etc.

Contact 07914 818017 or 07951 720103 for tickets

Proceeds in aid of charities:  
SSAFA Forces Help, Cancer Hair Care and others

**CLOPHILL  
METHODIST  
CHURCH**



# BEETLE DRIVE

**Saturday 11th November, 6.30pm**

**Adults £5, children £2.50**

**Refreshments**

In aid of Clophill Methodist Church

**Tel: 01525 860695**



## Christine's quick 'n' easy recipe



# Savoury Chicken Roll

### INGREDIENTS Serves 4

- 5 free range chicken breasts
- 3 slices of cooked ham
- 4 slices of emmenthal cheese
- knob of butter
- drizzle of extra virgin olive oil
- small glass of dry white wine
- ½ litre chicken stock
- salt & freshly ground black pepper
- sprig of fresh rosemary, stalk removed
- cooking string or small skewers



1. Butterfly the chicken breasts (cut through lengthways for  $\frac{3}{4}$  of the breast).
2. Cover each breast with clingfilm and beat with a rolling pin until flattened.
3. Lay the chicken breasts in a line, each one slightly overlapping the other.
4. Season the chicken breasts and sprinkle with the chopped rosemary.
5. Cover with the slices of ham and cheese.
6. Roll up the chicken breasts and either tie with cooking string or secure with skewers.
7. In a saucepan big enough to fit the chicken roll, gently heat the butter and olive oil.
8. When hot, place the chicken roll in and brown on all sides.
9. De-glaze the pan with the wine then add in the chicken stock.
10. Cook for approximately 30 minutes.
11. Remove the chicken roll from the pan and reduce the stock until you have a thick sauce.
12. Serve the chicken roll thinly sliced and drizzled with the cooking sauce plus vegetables of your choice.

# CHRISTMAS IS COMING...



... so get ready for Carl Colyer's spectacular Christmas lights! He'll be switching them on at **9 Readhill on 1st December at 6.30pm.**

As ever, donations go to charity – and this year it's the turn of Dreams Come True, which helps light up the lives of children and young people living with serious medical conditions.

Here's a quick reminder of one of Carl's previous light shows...



Bedfordshire  
Cambridgeshire  
Northamptonshire

## Wildlife walks & talks



### Fungal Foray

**Saturday 28th October, 10am-12.30pm, Flitwick Moor**

A walk through the moor with Alan Outen, who'll be sharing his knowledge of mushrooms and toadstools. Places are limited, booking is essential. £2 per adult

***Open to all. Walks have group size limits please reserve.***

For additional information and to reserve walk places please email [flitvale.info@gmail.com](mailto:flitvale.info@gmail.com) or ring Ann on 07890 347327 between 6pm and 8pm or at weekends



*Clophill Methodist Church*

## WINTER LUNCH

***Wednesday 15th November 12.30pm-2pm***

***Two courses plus tea or coffee – £6***

**Contact: 01525 860695**



# Clophill Preschool News

Hello! It's been a busy start to the year. Our home visits have proved very successful for us and our new families, helping us to get to know our new starters and giving parents an informal start to Preschool. We've been delighted to welcome back our children from last year and all of our new starters and their families.



We hope you all got a chance to see our Scarecrow on The Green at last month's festival. He was a labour of love by our children past and present – a real **recycled plastic pachyderm!** Over the past weeks we've also enjoyed mark making in a variety of ways, using shaving foam, glitter and rollers, **squiggling salt with our fingers** and using sticks to write in mud. We've collected food to donate for Harvest Festival – thank you to our families – and made bread with Lynne in cookery. At our **Grandparent's Coffee Morning**, Rosemary and Adrienne came to do crafts with the children and



taught them a Harvest Festival song. And Katie from Silsoe Dance has been back with more songs and dance moves.

Our **Outdoor area** is taking shape and we're really focusing on reusing and repurposing materials to make our setting as eco-friendly as we can. We have tables made out of old cable reels, seats made from wooden logs and planks from an old bed base and old washing up bowls to create mixing tray stands and sinks. A huge thank you to the Stanbridge family for donating their fantastic log cabin play house – we can't wait to fit it into our new play area.

Friday's **Nature and Nurture Day** has proved really popular. Although we have a strong ethos towards nature and the outdoors we don't think any of us, parents or staff, were prepared for the difference it would make to some of our children to spend a whole session outside exploring nature. One of our children insists on spending most of his time at home outside now, while another has transformed from a quiet, shy child to the first person to stand up and sing song. We have a whole host of fun Friday activities including climbing trees, making bird feeders, digging for worms and rolling down hills – and all while we're covering the seven areas of the Early Years curriculum.

A reader from Maulden called to offer us all her old shoes for our **clothing collection** to raise funds for the outdoor area build – thank you. This current term we're doing another collection of clothes, shoes, bedding etc so if you have anything to donate either drop it off to us at 57A High Street or give us a call and we'll come and collect. And do please keep an eye on our website and Facebook page for other resources we might need.

- Contact Imogen on **07765 887868** or Chris on **07936 006381** or email [clophillpreschool@gmail.com](mailto:clophillpreschool@gmail.com). Our website is [www.clophillpreschool.co.uk](http://www.clophillpreschool.co.uk)

*These notes are a resume only. Official minutes are available on the internet and notice boards. All official correspondence should be sent to the parish clerk and not individual councillors.*

On 12th September, Cllrs Rodell and Walford, plus Ward Cllr Downing, met with representatives of **Gallagher's Estates** to discuss progress of the Lakes. Gallagher's said that they expect to appoint the Management Partner before the end of the year, which is in line with the outline programme they presented at the DMC back in June. The development of the Section 106 agreement continues to progress as well, which is being supported by Central Bedfordshire Council's external legal advisers. A first draft is expected early in the new year. Further discussions took place regarding the proposed Ecology surveys and the timing of when Gallagher's would transfer the land to the Management Partner, which the Parish Council reminded Gallagher's are key Community priorities.

The Parish Council's dialogue with Gallagher's remains positive, with a follow-up meeting to be scheduled this month. Please watch out for further updates in Spotlight.

At our September council meeting we were pleased to co-opt **Colin Carpenter** on to Clophill Parish Council. We're confident Colin will prove to be an excellent addition to the council and we look forward to welcoming him to this month's meeting.

As a Parish Council we're keen to represent all sections of the village, including young people. Our online survey to capture **young people's views** is still available at [www.clophill-pc.gov.uk/youth](http://www.clophill-pc.gov.uk/youth). We've also now invited one keen local young person, Matthew Cowan, as a representative to attend our monthly meetings and report any issues or ideas that local teenagers may have. We're delighted to have Matthew on board and look forward to hearing more opinions about what it's like to be a young person in Clophill.

We've recently received a number of requests about **how to report pot holes, faulty street lights and other road issues**. You can do this online at [www.cb-report-it.co.uk/index.aspx](http://www.cb-report-it.co.uk/index.aspx) Other problems you can report include: dead animals, damaged pavements, faulty traffic lights, draining or flooding problems, overgrown trees and hedges, obstructions in the road, road sign or other street furniture and damage to bus stops and bus shelters. If you believe the problem is an emergency, please call the CBC 24 hour Highways Helpdesk on **0300 300 8049**.

Finally, in our September meeting we talked about whether residents would like some **adult gym equipment**, as part of the upgrading of the rec area. It would be great to get some feedback on this – please take a look at how the adult gym area could look and let us know your views. View it on our Facebook page at [facebook.com/clophillparishcouncil](https://facebook.com/clophillparishcouncil)

# Clophill Parish Council

Continued

---

## Planning

### **CB/TCA/17/00316**

Location 110 High Street  
Proposal Notification of works to trees in a Conservation Area: reduce Walnut Tree by one third, reduce Hornbeams Trees by one third and remove Birch Tree.

**SUPPORT**

### **CB/17/03546/OUT**

Location Land at Clophill Road, Maulden  
Proposal Outline planning permission for up to 50 dwellings with associated landscaping, open space and vehicular and pedestrian access off Clophill Road. While this application is outside the Clophill settlement envelope it abuts the village at Hall End and would undoubtedly impact Clophill infrastructure/services.

**OBJECT**

### **CB/17/03740/FULL**

Location Koffer House, Shefford Road  
Proposal Replace old nissen-style tractor shed with larger new nissen storage/tractor shed.

**SUPPORT**

### **CB/17/03775/FULL**

Location 2 The Gables, Great Lane  
Proposal Single-storey front and side extensions, alterations to roof, alterations to external fenestration and the erection of detached garage structure with room above. The proposed development would have an unacceptable adverse visual impact on the open and undeveloped character of the site and surrounding area.

**OBJECT**

### **CB/17/03942/FULL**

Location Northfield Farm, Great Lane  
Proposal Two 2-storey side extensions to main house and a single-storey rear garden room. This includes new front dormer window, new windows and doors to north-west elevation and internal alterations following demolition of side conservatory and rear lean-to.

**SUPPORT**

### **CB/TCA/17/00358**

Location 6A Mill Lane  
Proposal Notification of works to trees in a conservation area: removal of two Fir Trees.

**SUPPORT**

The next Parish Council meeting will take place at the Village Hall  
at 7.45pm on Tuesday 31st October 2017

A decorative graphic of dark, leafy branches hangs down from the top left corner of the poster.

St Mary's Church,  
Clophill

Invite you to an

# *AUTUMN LUNCH*

**18th October**

**12 noon-2pm     in the Church**

**£6 – two-course meal**

**Everyone very welcome**

**Please reserve a place**

**– phone Liz 01525 860108 or Julie 01525 860497**

# What's on in and around Clophill

OCTOBER

18

**Wednesday 18th**

**Autumn Lunch** Noon-2pm, St Mary's Church. *See this issue for booking details.*

27

**Friday 27th**

**Macbeth** 6pm, Old Church.

*For ticket details, go to <http://clophillecolodges.org.uk/events>*

28

**Saturday 28th**

**Macbeth** 6pm, Old Church.

*For ticket details, go to <http://clophillecolodges.org.uk/events>*

28

**Saturday 28th**

**Pumpkin Festival** Noon-4pm, Eco Lodges.

*For ticket details, go to <http://clophillecolodges.org.uk/events>.*

NOVEMBER

4

**Saturday 4th**

**Firework Night** 7.15pm, St Mary's School. *See this issue for ticket details.*

11

**Saturday 11th**

**Beetle Drive** 6.30pm, Clophill Methodist Church.

*See this issue for ticket prices.*

11

**Saturday 11th**

**Gastro Quiz** 7pm, Silsoe Village Hall. *See this issue for ticket information.*

15

**Wednesday 15th**

**Winter Lunch** 12.30pm-2pm, Clophill Methodist Church.

*See this issue for more information.*

25

**Saturday 25th**

**Barn Dance** 7.30pm-11pm, Clophill Village Hall.

*See this issue for ticket information.*

DEC

6

**Saturday 2nd**

**Christmas Market** 12-4pm, Clophill Methodist Church.

*See this issue for full details.*

## On throughout the month...

### Wednesdays...

- **Tea and Coffee Morning** at the Methodist Church, 10.30am-noon

### Fridays...

- **Clophill Toddler Group** Clophill Village Hall, 10am-noon. See 'Village Groups' for contact details

### One Saturday a month...

- **Messy Church** 4pm-6pm, Clophill Methodist Church. Dates: 14 Oct; 18 Nov; 16 Dec. All-age craft activities, worship and a meal for all the family. No fixed charge, donations welcome, children must be accompanied by an adult. See 'Village Groups' for contact details.

### CHURCH SERVICES

#### Regular services at St Mary's Church, Clophill

1st Sunday	8am, Holy Communion; 10.45am, Family Praise
2nd & 4th Sundays	10.45am, Parish Communion
3rd Sunday	10.45am, Morning Prayer/Praise
5th Sunday	10am, Benefice Services

#### Regular services at Clophill Methodist Church

1st, 2nd, 4th, 5th Sundays	10.30am Morning Service
3rd Sunday	10.30am All Age Worship Service

If you have any diary dates that you would like included on this page, please email [clophillspotlight1@hotmail.co.uk](mailto:clophillspotlight1@hotmail.co.uk)



# BARN DANCE

TO RAISE FUNDS FOR THE  
NEW NURSERY BUILDING at ST MARY'S SCHOOL

SATURDAY 25TH NOVEMBER  
CLOPHILL VILLAGE HALL  
7.30PM-11.00PM



TICKETS £12.50 IN ADVANCE  
TO INCLUDE PLOUGHMAN'S SUPPER  
BAR & RAFFLE

TICKETS AVAILABLE FROM SCHOOL OFFICE OR EMAIL  
GOVERNORS@CLOPHILLSTMARYSSCHOOL.CO.UK OR  
RING BRIDGET 07752 381665 OR EMMA 07894 686786

supporting the local community  
[www.fidelityprint.co.uk](http://www.fidelityprint.co.uk)  
**fidelity**  
design & print

# Parish Registers for September

**1817**

## **Baptisms**

Oct 15 James John Stephenson (?)

## **Marriages**

Oct 17 Thomas Lammas to Lucy Ridge

## **Burials**

Oct 2 Matthew Denton (?)

**1867**

## **Baptisms**

Oct 6 Emily Richardson  
Martha Elizabeth Woodcraft  
Harriett Coley (?)  
Samuel William Harris  
Arthur White  
Elizabeth Bowler  
Harry Lawson  
William Bushby

## **Marriages**

Oct 12 James Parrish, 53, widower,  
to Charlotte Allberry (?), 36  
Oct 19 Matthew Dunham Denton, 20,  
to Sarah Izzard, 22

**1867** continued

## **Burials**

Oct 11 Ann Cooper, 3 years 9 months

**1917**

## **Burials**

Oct 23 Hannah Amy Goss, 86

**1967**

## **Burials**

Oct 9 Kenneth William Collis, 34

## **ST MARY'S CHURCH REGISTERS AUGUST/SEPTEMBER 2017**

### **Baptism**

Aug 27 Olivia Kathryn Howson

### **Funerals**

Aug 24 Barbara Constance Tew, 84  
Sept 14 Philip Young



## **THREE KINGS CHRISTMAS TREES**

**Fresh Cut Christmas Trees**

**Direct from the Grower**

**Please come and visit us and have a look around**

**All trees are displayed inside**

**Opening from:  
FRIDAY  
1<sup>st</sup> December**



**9 am – 6pm  
7 days a week**

**GROWS WELL**

**SEVEN ACRES NURSERY, SHEFFORD ROAD,  
(BEADLOW) CLOPHILL. SG17 5PL**

# Useful numbers

<b>Gas</b> (Emergency)		0800 111999
<b>Electricity</b> (Emergency)		0800 7838838
<b>Emergency Fire/Police/Ambulance</b>		999
<b>Water/Sewage</b> (Anglian Water)		0845 7145145
<b>Telephone</b>	(Customer Services) 150 (Faults)	151
<b>Highways Department</b> (Central Bedfordshire Council)		0300 3008049
<b>Benefits Agency</b> (Bedford office)		01234 361500
<b>Registrar's Office</b> (Births/deaths/marriages)		0300 3008089
<b>Rail</b> (Enquiries)		0845 7484950
<b>Buses</b> 01234 262151	(Link A Ride) 01525 840511 (Flittabus)	01582 406561
<b>Luton Airport</b>		01582 405100
<b>Swimming</b>	(Flitwick) 01525 717744 (Robinson Pool)	01234 212479

## LOCAL GOVERNMENT

<b>Central Beds Offices</b> (Chicksands)		0300 300 8000
<b>Mid-Beds MP</b>	Nadine Dorries	01462 811992
<b>Central Bedfordshire Councillors</b>	Michael Blair	01525 404513
	Paul Duckett	07988 184061
<b>Clophill Parish Council</b>	Paul Downing	01525 860350
	(Clerk) James Stirling	01462 887226

## HOSPITALS

<b>Bedford</b> (North & South)	01234 355122	Admissions	01234 261150
		Appointments	01234 359012
<b>Luton &amp; Dunstable</b>			0845 1270127

## DOCTOR'S CLINICS

<b>Amphill</b>	(Houghton Close) 01525 300898	(Oliver Street)	01525 631395
		(Greensands)	01525 631390
<b>Shefford</b>	Enquiries 01462 818620	Appointments	01462 810034
<b>Barton</b> 01582 528700		<b>Flitwick</b>	01525 715300

## POLICE

	Non Emergency	101
<b>County Police HQ</b>		01234 841212
<b>Amphill Station</b>		101

## CHURCHES

<b>St Mary's Parish Church</b>	Liz Henman	01525 860108
<b>St Francis RC Church, Shefford</b>	Ian Gordon	01525 860875
<b>Clophill Methodist Church</b>	Jim Davies	01525 860829
<b>Baptist Churches</b> (Amphill) Doreen Gibbs 01525 862424	(Maulden) Ian Crawford	01525 634325
	(Shefford) Hazel Arnold	01462 812564

## SCHOOLS

<b>Clophill St Mary's C of E Lower School &amp; Nursery</b> (Headteacher Mrs K Bingley)	01525 860206
<b>Harlington Upper School, Harlington</b>	01525 755100
<b>Preschool</b> clophillpreschool@gmail.com (Chris) 07936 006381 or (Imogen)	07765 887868
<b>Redborne Upper School, Amphill</b>	01525 404462
<b>Robert Bloomfield Middle School, Shefford</b>	01462 628800

# Village groups

Beverley Court	860920
Brownies	<a href="https://enquiryym.girlguiding.org.uk">https://enquiryym.girlguiding.org.uk</a>
Clophill Community Care	Duty Contact 07791 773705
Clophill Heritage Trust	Ali Bradbury 07894 710001
Clophill St Mary's C of E Lower School & Nursery	Sharon Kempson 860206
Clophill Toddler Group	Caroline Daniels 07734 495348
Clophill United Charities	Gillian Hill 860539
Conservation Group	Brian Adams 862297
Flower Club	Gillian Hill 860539
Friends of the Cheshire Home	Sue Pearson 861110
Funzone After School Club	07903 167493
Greensands Community Choir	Luke Howard 07975 520085
Indoor Carpet Bowls	Tony Meredith 860754
Messy Church	Victoria Higgins 07920 568861
	<a href="mailto:victoriajhiggins@hotmail.co.uk">victoriajhiggins@hotmail.co.uk</a>
St Mary's PTA	Julia Skelton 07774 993973
Scouts and Cubs	<a href="http://www.scouts.org.uk/get-involved">www.scouts.org.uk/get-involved</a>
Tea and Chat	Anita Errick 860695
Tuesday Club	Betty Hampson 860750
Village Hall Booking Secretary	Marilyn Browning 07821 643936

## Stand out from the crowd

**It can all start with your logo...**an effective logo creates an expectation about the qualities of a product or service. Simply buying an off-the-shelf logo from the internet can be a false economy as it could actually cost you potential new customers.

I have over 20 years' experience as a graphic designer producing bespoke logos for businesses of all sizes, creating unique brands that make a company more memorable.

I also offer a range of graphic services, including brochure and leaflet design, web design, adverts, posters and pull-ups, exhibitions, vehicle livery, packaging and many more things besides.

I'd love the opportunity to discuss how I may be able to help your company stand out. **Feel free to get in touch.**

**abrahams**  
CREATIVE

[www.abrahamscreative.co.uk](http://www.abrahamscreative.co.uk)

INTRODUCTORY OFFER  
**Let me design a unique  
logo for your business**

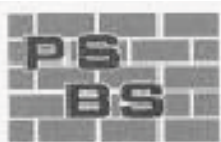
**£495\***

(includes 250 printed business cards)

\*For further information, please contact Chris:

Telephone: +44 (0)7889 617950 Email: [chris@abrahamscreative.co.uk](mailto:chris@abrahamscreative.co.uk)

**beinspired**  
CREATIVE SOLUTIONS FOR PRINT & WEB



## PETER SHARPE BUILDING SERVICES LTD

**Call us first for ALL your building works  
and get reliability, quality & sensible prices.**

- Domestic extensions
- Design & build service
- General building works, drives, patios
- Carpentry, kitchen fitting, wall & floor tiling
- Laminate flooring & hardwood flooring
- Mini digger and driver hire
- Electrical installations including Building Regulation part P certification
- Roofing repairs carried out
- Conservatories, UPVC windows

**‘BEDFORDSHIRE’S PROFESSIONAL BUILDER’**

**01525 872762 / 07850 803021**

**email: [psbsltd@btconnect.com](mailto:psbsltd@btconnect.com)**



## Painter and Decorator

**Call Chris : 07950714579**

*facebook: @christopherthepainter*

*email: [chris.minihane@btinternet.com](mailto:chris.minihane@btinternet.com)*

*do you want your home brightening up?*

*all interior & exterior work*

*no job too small!*

*free no obligation quote*

*25 years experience & fully insured*





# Bowbelles Grooming Room

Dog grooming in an intimate, purpose-built grooming room with top-of-the-range equipment

**Baths or full groom • Micro chipping service • Fully insured**

**Call Becky on 07746 546410**



Find us on facebook

6 Little Lane, Clophill MK45 4BG



Telephone

**01525**

**860526**

## The Stone Jug

**A Free House**

BACK STREET, CLOPHILL

2017 sees us celebrating our 35th anniversary – yes, it really has been THAT long! However, it's not out with the old and in with the new as we believe in traditional, honest values – which is why our smiler, Bob, and the matriarch, Joyce, are still holding court! Make 'The Jug' part of your tradition in 2017 and experience a 'proper pub for proper people', as my late dad used to say. Cheers!

- 5 real ales, including 2 guest pumps that change frequently (see our Facebook page for details)
- selection of wines and Prosecco by the glass – or even better, by the bottle
- home-cooked lunches Tues-Sat, 12pm-2pm



**REMEMBER OUR MOTTO**

**"A VISIT TO THE JUG IS BETTER THAN GOING TO A PUB"**

**CHEERS JOYCE & VIKKI**

[www.stonejug.co.uk](http://www.stonejug.co.uk)

[www.facebook.com/thestonejugclophill](http://www.facebook.com/thestonejugclophill)

## Hire Clophill Village Hall



**Wedding Receptions**

**Birthdays & Special Occasions**

**Dances and Discos**

**Club & Community Meetings & Activities**

Phone: 07821 643 936

Mail: [Clophill.villagehall@gmail.com](mailto:Clophill.villagehall@gmail.com) Web: [www.clophillvillagehall.co.uk](http://www.clophillvillagehall.co.uk)



**DANIEL**  
DESIGN & BUILD LTD

Matthew Dibden

- Architectural Design
- Planning Applications
- Building Regs

Office: **01525 860186**

Mobile: **07972 197754**

Email: **matt@daniel-design.co.uk**



**www.daniel-design.co.uk**



**Tel: 07966 665654**

Web: **www.emtacademy.co.uk**

Email: **carrie@emtacademy.co.uk**



ASSOCIATION OF FIRST AID AND HEALTH & SAFETY TUTORS

## **EMT Academy – Emergency Medical Training is a Clophill based First Aid Training company**

All EMT Academy trainers have worked professionally as Emergency Medical Technicians, Paramedics or Police Firearms Medics so we can bring real life experience and scenarios to your course.

### **Courses Available**

- First Aid at Work
- First Aid at Work Requalification
- Emergency First Aid at Work
- Annual Refresher
- Automated External Defibrillator
- Family First Aid
- Paediatric First Aid
- Basic Life Support
- Bespoke First Aid\*

Our feedback shows that the one-to-one practical skills taught by our instructors ensure students feel confident to deal with any unexpected medical emergency.

If you are a parent, grandparent, babysitter, childminder, carer, employer or an organisation\* e.g. sports clubs, Guides/Scouts, equestrian, please contact us, we will be happy to discuss which course will best suit your needs.



*Offering  
holistic  
therapies*

- Reflexology
- Reflexology for fertility
- Pregnancy massage
  - Ear candling
  - Reiki healing
- Indian head massage

Treatments available in Clophill & Ampthill. Qualified and insured with nine years experience

For information and appointments call Lorraine on **07708 580308**



**www.librawellness.co.uk**



- Accountants who know how businesses run
- Qualified Chartered Accountant and Chartered Tax Advisor
- Friendly Accountants who listen to your needs
- A wide range of services offered

Call

**01525 552250**



**for a FREE initial meeting**

**www.savageaccountants.co.uk**

Company Registration Number: 09214570  
**Cure your tax headaches**

*Hairs  
& Graces*  
Unisex Salon



Wet Cut £17  
Cut & Blow Dry £28  
Colours start from £25  
Special OAP rates

Opening Hours:

Monday	9.30-2.00
Tuesday	9.30-5.00
Wednesday	9.30-5.00
Thursday	9.30-8.00
Friday	9.30-8.00
Saturday	9.30-4.00

*Zoe, Donna, Gemma  
and Amanda* look forward  
to welcoming you.

Ring now to book an  
appointment.  
Appointments also  
available with our Barber.

Burgoine Business Centre, 117 Clophill Road, Maulden MK45 2AE

**01525 861491** • Loads of free parking



# Automotive Services

FOR ALL YOUR VEHICLE REQUIREMENTS

**We are your one-stop shop...**

- servicing from £50, including parts
  - MOT test - £25
- collection & delivery service
  - interest-free credit
  - nationwide warranty
- tyres fitted from £18 – largest stockist of tyres in Bedfordshire
  - free courtesy cars

**Opening hours:**

Mon-Friday, 8.30am-5.30pm; Sat, 9am-1pm

**01234 216003**

35 Brunel Road, Bedford MK41 9TJ

[www.automotiveservicesbedford.co.uk](http://www.automotiveservicesbedford.co.uk)



## **Mindfulness Movement & Meditation**

**RELAX**

**STRETCH**

**MEDITATE**



**This class teaches relaxation & breathing techniques, together with gentle yoga-based stretches and postures**

**Clophill Centre: Thursdays 9.30am-10.45am**

**Contact Ann for more information and booking**

**0779 1171980    [ann.okeeffe@btinternet.com](mailto:ann.okeeffe@btinternet.com)**

## **CLOPHILL TODDLER GROUP**

*Understanding the importance of a child's play*

**LOTS OF TOYS, SPACE AND FRIENDS  
FOR BABIES AND TODDLERS UNDER 3**

**FRIDAYS 10am – 11.30am at the Village Hall  
See 'Village Groups' for contact details**



# Linda Allsop

PHYSIOTHERAPY



Chartered  
Physiotherapist  
with over 30 years  
experience in both  
the Private Sector  
and the NHS.

01462 711978 | 07989 257026  
[www.linda-allsop-physio.co.uk](http://www.linda-allsop-physio.co.uk)

USING PARABEN & SULPHATE FREE, 100% VEGAN,  
CRUELTY FREE PRODUCTS



## A Cut Above Hairdressing

by Rachel

In the comfort of your own home  
cutting & styling specialist

call or text : 07896009382  
facebook: acutaboverachel


Salon experienced  
Fully insured  
Fully qualified to Level 3 Standard.

## PERSONAL DOG WALKER

£10 per hour  
£6 per half hour

- First Aid Certified
- Insured



Text or call Corrane on  
**07576 473373** or **01525 630740**  
 Corrane's personal dog walking

## SJ TAX & ACCOUNTING

### QUALIFIED ACCOUNTANT

Professional friendly services,  
Tax advice, Free initial consultation,  
Sole trades, Ltd companies,  
Bookkeeping, Payroll,  
CIS, VAT & Tax

**DOWNLOAD OUR FREE APP**  
"SJ TAX LTD"

contains lots of free tax info and  
a free income and expenses tracker

**e: [sally@sjtax.co.uk](mailto:sally@sjtax.co.uk)**  
**t: 01234 831997**  
**m: 07899 808592**



*Greensand Community Choir*  
**LOVE SINGING!**  
sing with an exciting local choir...



Come along to your local **community choir**,  
for men and women of all singing abilities!  
Mondays, 8.00-9.30 pm at St. Mary's Church, Clophill.

- Come and sing with an exciting new local choir led by a professional musical director
- Uplifting music in a variety of styles: musicals, classic pop, folksongs, sacred and world music
- Welcoming singers of all abilities - no audition, no need to read music!
- New members - come along any time for a free taster

Enquiries to:

**greensandcommunitychoir@gmail.com**

**or ring Luke on: 07975 520085**

## Welcome to Clophill St Mary's C of E Lower School and Nursery

A small, friendly, Voluntary Aided Church of England Lower School, graded 'Outstanding' by Ofsted, with close links to the local community.

St. Mary's is a Values based school taking children aged from 2 years 7 months to 9 years and providing them with a framework for living, tightly woven into the positive Christian ethos of the school.

Breakfast and after school care for all ages.

## Acorn Nursery

for preschool children aged 2 years 7 months to 4 years with breakfast and after school care available.

Providing 30 hours free childcare entitlement.



**NEW NURSERY BUILDING  
OPEN NOW!**

To arrange a visit, please call us 01525 860206  
or email: [generaladmin@nursery@clophillstmarysschool.co.uk](mailto:generaladmin@nursery@clophillstmarysschool.co.uk)  
For more information visit: [www.clophillstmarysschool.co.uk](http://www.clophillstmarysschool.co.uk)

# OVENCLEAN.

The original oven cleaning specialists

We clean all types of:

- Ovens
- AGAs
- Grills
- Microwaves
- Ranges
- BBQs
- Hobs
- Extractors

Fully insured, and a proud member of Checkatrade.com

For a quote call Clive on:

**07949 233089 or**

**0800 840 7127**

[www.ovenclean.com](http://www.ovenclean.com)

**£5 OFF**

Proud members of  
**Checkatrade.com**  
Where reputation matters



## OPENING TIMES:

Mon	Closed
Tue	9.30-4pm
Wed	9.30-4pm
Thurs	9.30-7pm
Fri.	9.30-6pm
Sat	8.30-4pm

## PRICES:

Men's cut.	£12
Clippers.	£10
Buzz cut.	£5
Restyle and fades.	£17
Beard trims.	£10
Childs cut.	£10 (under 6yrs)

We are adjacent to the newsagent. (from time to time there is a large green transit van parked in front of the barbers)

22 High Street, Silsoe MK45 4EP

07813145112

THE BLUECAT



**Tel: 01525 861416**

[www.thebluecat.net](http://www.thebluecat.net)

Find us on Facebook @thebluecatcattery or email us at [enquiries@thebluecat.net](mailto:enquiries@thebluecat.net)

The Bluecat is a luxury cattery set in the quiet area of Jacques Lane in Clophill. With just 14 cat chalets, we have time to fuss, pamper and play with your cat to its heart's content whilst in our care. Please call for further information.

## Misty Double Glazing?

**KEEP YOUR WINDOW FRAMES...  
... WE JUST REPLACE THE GLASS!**

• UPVC • Aluminium • Or Wood

Because we replace just the glass the repair is a Fraction of the cost of a complete replacement window.



**mistydoublinglazing.co.uk**  
**QUALITY GLAZING SERVICES**

**01525 876808**

**WE ALSO REPLACE BROKEN...**

• Glass • Handles • Hinges & Locks  
**AND REPAIR...Patio Doors & Conservatories!**



# Clophill Preschool

Welcoming children  
from **2 years** of age...

in the fantastic setting of Clophill Village Hall. Our highly qualified team is led by a qualified Teacher and a Nursery Nurse. We provide a safe, secure and stimulating environment with brilliant ideas and activities that open the doors to learning and beyond. Come and see what your 2, 3 and 4 year olds can learn with us, our door is always open.

**clohillpreschool@gmail.com**  
**www.clohillpreschool.co.uk**

**Call Imogen 07765 887868**  
**or Chris 07936 006381**



## ARCHITECTURAL DRAWINGS AND BUILDING DESIGN SERVICES

Professional Architectural design services provided for all types of private residential building projects including extensions, loft/garage conversions, garages and outbuildings through to new build dwellings with all necessary council approvals obtained.

For free estimates and advice contact Steve Coates on Flitwick 01525 862457 or 07960 215053.  
**stevecoates72@gmail.com**

S & S Coates Surveying & Design, Unit 4 The Courtyard,  
r/o 13 High St, Clophill, MK45 4AB.





## The Happy Place.co.uk

On the Green beside the Post Office every Friday  
3.30-7.30pm

We are your local mobile fish and chip van, we have been parked on the green every Friday for the past 6 years.

We serve only the highest quality produce, cooked fresh to order and served to you by our friendly staff.

Why don't you pop down and come and  
Try Our Fry!

To avoid waiting in the cold, give us a call to

**place your order on: 07833 786108**

A big thank you to all our customers who have loyally supported us over the past couple of years.

### Clophill

### Mace

Post Office & Stores

- Fresh bread & dairy produce
- Newspapers & magazines
- Confectionery & tobacco
- Wines, beers & spirits
- Cards & stationery
- Household goods
- Baby products
- Toys & gifts
- Dry cleaning
- Photocopying
- Shoe repairs
- Post office counter services



#### Shop Hours

Mon - Sat 7.30 - 7.30 | Sun 8.00 - 1.00

#### Post Office Hours

Mon, Tues, Wed, Fri 9.00 - 1.00, 2.00 - 5.30 | Thu, Sat 9.00 - 1.00

**THE GREEN, CLOPHILL 01525 860988**

Proprietors:  
Deepak & Daksha Chandarana

**Stephens**

Your local removals & storage company



*Specialising in house removals and office relocations in the UK, Europe and Overseas.*

**REMOVALS**

Local, National, International

**STORAGE**

Secure & Containerised

**PACKING**

Full Or Part & Materials

**LONG ESTABLISHED REMOVAL COMPANY OFFERING A PROFESSIONAL, FRIENDLY SERVICE**

COMPREHENSIVE INSURANCE • FREE ESTIMATES

**01582 572967**

## ***STUART DREW ELECTRICAL SERVICES***

MEMBER OF THE ECA

PART P CERTIFIED QUALIFIED TO 17TH EDITION

From extra lights & sockets, to re-wires. Fault finding and electrical safety certification. For a professional, courteous service with free estimates & all work guaranteed, please call me

29 Lincoln Way  
Harlington  
Beds  
LU5 6NG

**Fully qualified & insured  
30 years experience**

Telephone:  
01525 875965  
07941 812662

## **ROGER STOREY**

**YOUR LOCAL PAINTER AND DECORATOR**

Friendly and Reliable Service

Many Years Experience

Please phone: **01525 861253** or **07800 777615**

**Based near Toddington, Bedfordshire.**

**We rescue, rehabilitate & re-home stray & abandoned cats.**

**We have lots of beautiful cats waiting for loving homes.**

**Ring the shelter on 01525 875993**

**or Sue on 01582 650167 to arrange a visit.**



**Registered Charity No. 1098984**

**Visit our website @[www.straycatrescue.org.uk](http://www.straycatrescue.org.uk)**

# A L & G ABBOTT

Funeral Directors

~ Established 1832 ~

WITH YOU WHEN IT MATTERS MOST

An independent family business continuing to provide a caring & professional service to Bedford, Kempston & the surrounding villages.



- 24 Hour Personal Service
- Pre-Paid Funeral Plans
- Private Chapels of Rest
- Green Burials
- Home Arrangements
- Civil Services Available



**T 01234 843222**

**[www.abbott-funerals.co.uk](http://www.abbott-funerals.co.uk) [support@abbott-funerals.co.uk](mailto:support@abbott-funerals.co.uk)**

**150 BEDFORD ROAD, KEMPSTON, BEDFORDSHIRE, MK42 8BH**

# AIMS

Tim Kemp BA FCA  
Top Barn Rectory Road  
Steppingly MK45 5AT

TEL/FAX : 01525 717141  
MOBILE : 07900 823 012  
[www.aims.co.uk](http://www.aims.co.uk)  
e-mail: [timk@aims.co.uk](mailto:timk@aims.co.uk)

- ◆ **Professional** service providing for all your accounting and tax needs
- ◆ **Practical** advice based on 20 years experience in **running** businesses
- ◆ **Personal** approach with fixed fees relevant to the work **you** need
- ◆ **Friendly, local** accountant supporting the community for over 20 years

Please call for a free, no-obligation initial meeting

**ACCOUNTANTS FOR *business***

## Hills-Howson Financial Services

Financial adviser appointments available in your home or our office

The Old Post Office  
53 High Street  
Claphill  
Beds MK45 4BE

Tel: 01525 861803  
[www.hills-howson.co.uk](http://www.hills-howson.co.uk)  
[hills.howson@btconnect.com](mailto:hills.howson@btconnect.com)

Including:-

Investments

Pensions

Protection

Annuities



**W&H PEACOCK**

AUCTIONEERS & VALUERS

# Auction Sales and Valuations

Valuation, collection & auction  
service of individual items through  
to complete property clearances.

Call for a free no obligation  
collection quote or email  
[info@peacockauction.co.uk](mailto:info@peacockauction.co.uk)

**SALE ENTRIES NOW INVITED**

Auction Centre, Eastcotts Park, Wallis Way, Bedford MK42 0PE

**01234 266 366** [peacockauction.co.uk](http://peacockauction.co.uk)



## THE COMPUTER MAN



Got a problem with your computer and don't know what  
to do? Suffering with a virus or spam?

**Don't hesitate! Ring your local computer expert**

**Remote repairs or home visits  
(Day, evening & weekend)**

**Lap top/desk top loan  
(Free pick up & drop off in local area)**

Comprehensive health check from £35 (**Special Offer** £35 - normally £40)  
Refurbished fl at screen available from £15 • Refurbished base units available from £99



Contact Stephen Amos  
**07976 718567**  
[the.computerman@ntlworld.com](mailto:the.computerman@ntlworld.com)





## **rincon tuition - Spanish & Maths**

**Expand your knowledge. Boost your confidence**

**01525 860743**

**Exam techniques and preparation. Revision and practice papers: SATs and GCSE**

**Spanish** for business or pleasure, all levels. GCSE & A-levels

Skills development: conversation, reading and writing

**Maths:** Boost your confidence and abilities

KS1, KS2, KS3, SATs and GCSE practice papers

**DBS** checked and references - Reasonable rates

**01525 860743 - 07952 667814 [rincontuition@aol.com](mailto:rincontuition@aol.com)**



## **LIZZIE BROWN PET CARE & HORSE GROOM SERVICES**



**DOG WALKING  
PET POP-IN & FEEDING  
PET/HOUSE SITTING  
EQUINE GROOM\***

(\*BTEC Cert Equine Management)



**Lizzie Brown 01525 862459 / 07500 989 700**

*Reliable friendly local service*

**Short notice available (no contract commitments)**

***Insured    Quality references available    CRB checked\****

\*(Disclosure & Barring Service)





Baths, Toilets &  
Showers  
Sinks and Taps  
Guttering  
Leaks and Burst Pipes  
Drainage  
Handyman jobs also



Silsoe based  
No call out fee – free estimates  
Fully insured and guaranteed  
No job too small  
**07720 723653 01525 864859**  
info@betaplumbing.co.uk  
www.betaplumbing.co.uk

## Foot Health Practitioner

Corns, Hard Skin, Verruca, Fungal Nail Infection,  
In-growing Toe Nails, Diabetic Foot Care, Athlete's Foot,  
Pedicure, General Nail Cutting etc.

***In the comfort of your home or at my clinic***

**Ann Gibbons** MCFHP, MBAFHP.

Competitive Rates

**Tel: 01462 813252 Mob: 07872 315763**

**Web: [www.shamrockclinic.co.uk](http://www.shamrockclinic.co.uk)**

For opening hours and other details please refer to my website



## GARDEN DOCTOR

**Rob McLeod**  
Pruning Specialist

**Professional, Local, Experienced**

- \* All tree and hedge work undertaken
- \* High standard of work
- \* Rubbish cleared from site
- \* Free Quotations
- \* Local, reliable service you can trust



**Tel: 07763 239340 or 01525 861568**  
**email: [garden.doctor@btinternet.com](mailto:garden.doctor@btinternet.com)**

Tree Surgery & Removal  
Shrubs & Fruit Trees  
Pruning & Spraying  
Fully certificated and  
insured

Call the Garden Doctor and bring Good Health to your Garden



## We'll get you up and running!

We offer the very best physiotherapy care from a friendly approachable team of nine highly trained Chartered Physiotherapists all members of the Health Professionals Council

### Expert treatment including:

Neck/Back/Hand and Tennis Elbow Pain  
Headaches/Migraine/Sciatica  
Incontinence/Pelvic/SIJ/SPD/Pregnancy Back Pain  
Sprains/Strains/Torn Ligaments  
Whiplash/RSI/Osteoporosis/Sports Injuries

### Specialist Physiotherapists:

Neurological, Paediatric, Vertigo and Dizziness

### We also offer complementary treatments:

Acupuncture, Reflexology, Massage, Indian Head Massage,  
Chinese Herbalist, Lymphatic Drainage and Pumps



Tel: 01525 720882 [www.chartered-physiotherapy.co.uk](http://www.chartered-physiotherapy.co.uk) Email: [amphillphysio@btconnect.com](mailto:amphillphysio@btconnect.com)

7 Station Square, Flitwick, MK45 1DP

## E.T. Accountancy Services

Experienced Chartered Accountant and Chartered Tax Adviser based in Clophill providing a full range of accountancy and taxation services to businesses and private individuals.

To arrange a free initial consultation please telephone me on  
01525 590465 or email [emma@et-accountancy.co.uk](mailto:emma@et-accountancy.co.uk)

*Chartered Accountant and Chartered Tax Adviser*

Emma Thoulass FCA CTA [www.et-accountancy.co.uk](http://www.et-accountancy.co.uk) 01525 590465

## Chapman & Kirby Heating

**Gas, Plumbing & Heating Installations**

**Gas Safe Registered**

**Boiler Servicing & Maintenance**



**Call us now**

**Tel: 01525 861255 Mob: 07831 132308**

**Email: [info@chapmanandkirbyheating.co.uk](mailto:info@chapmanandkirbyheating.co.uk)**

**1C, Old Silsoe Road, Clophill, Beds., MK45 4AR**

# NEVILLE

FUNERAL SERVICE

Established 1875

## Reassurance when you need it most

Serving the people of Bedfordshire since 1875



### **Neville Funeral Service**

inc. George Squire & Sons since 1976

24 Clifton Road

Shefford SG17 5AE

t: 01462 813258

e: [shefford@nevillefuneralservice.com](mailto:shefford@nevillefuneralservice.com)



### **Neville Funeral Service**

The Old Church Flitwick Road

Amptill MK45 2NT

t: 01525 406132

e: [amptill@nevillefuneralservice.com](mailto:amptill@nevillefuneralservice.com)



[www.nevillefuneralservice.com](http://www.nevillefuneralservice.com)

# The UK's No.1 Lawn Care Company



- Scarification
- Aeration
- Lawn Fertilising
- Weed Control
- Moss Control
- Water Conserver
- Pest and Disease Management



GreenThumb has a variety of treatment programmes to suit your pocket that include our traditional 'pay-as-you-go' service and our new, pay monthly, Direct Debit programmes, where you can save up to 25% annually.

Our treatments start from £5 per month, that's cheaper than D-I-Y and without the hassle!

Call your local branch today for a FREE lawn analysis and no obligation quote.

**0800 0111 222**

**GreenThumb**  
LAWN TREATMENT SERVICE



Find us online at: [www.greenthumb.co.uk](http://www.greenthumb.co.uk)



- Suppliers of traditional and modern equipment
- Working whirlpool & spa baths, power & steam shower systems on display
- Over 40 settings on display
- Complete installation service if required
- Personal friendly service from a family run business
- Wall and floor tiles
- Accessories
- Mirrors
- Bathroom furniture
- Heated towel rails
- Saunas
- Bathroom cabinets

**SHEFFORD 01462 627002**

[www.bathroomvogue.com](http://www.bathroomvogue.com)

Unit 4A, Shefford Industrial Park, St Francis Way, Shefford SG17 5DZ

Woburn  
Country Foods

A Mark of Quality

## WOBURN COUNTRY FOODS

Online - Catering - Retail Butcher

High Quality Local Meat

- 21 Day Matured Beef -
- Farm Assured Chicken -
- Bedfordshire Lamb -
- Bedfordshire Pork -

The Farm Shop, West End Farm  
Haynes West End, Bedfordshire  
MK45 3RA

Order Online & Collect In Store  
[www.woburncountryfoods.com](http://www.woburncountryfoods.com)

## LOCAL ALLOY WHEEL REFURBISHMENT

  
**mintalloys**  
complete alloy wheel refurbishment

**Tel:**  
**01525**  
**860069**

**Alloy Wheel Repairs**

**Diamond Cut Alloy Wheels Repaired On Site**

**Powder Coat Primers & Lacquers**

**Fast Turnaround Alloy Wheel Welding**

**Tyres At Competitive Prices**


**NEW for 2015 - 4 Wheel Alignment Service**

**[www.mintalloys.co.uk](http://www.mintalloys.co.uk)**



Peter Hendry  
**Traditional Window Cleaner**  
**07590599381**  
 phendry8@hotmail.co.uk

# Time to Shine



**Compu-Doc**  
 PC / laptop crisis ?  
 01525-402227  
 john.stafford@compu-doc.co.uk

Call the Doc for -  
 Hardware & software  
 Diagnosis & treatment

# Daisy Cooper

Spring cleans, one off cleans and moving home cleans all available.

Daisycooper22@hotmail.co.uk  
 Please call 07913 332914



Keeping your home as fresh as a Daisy

*Nature is our theme.....*

**Boarding Dogs & Cats**  
**Day Boarding - Dogs**  
**'Nature' Food Shop**  
*plus*  
**On site Grooming - Dogs**  
**Off site Walking - Dogs**

**Conifer**  
 Kennels & Cattery  
**01525 860339**

**www.coniferkennels.co.uk** 

**nutriment** ENHANCED raw diet formula  
**natures menu** REAL FOOD PET'S LOVE  
**frozys**  
**Green Pantry**  
**ARDEN GRANGE**

APPLY FOR STOCKIST: Conifer Kennels & Cattery, The Causeway, Claphill, Beds. MK45 4BA





## Wrest Park Day Nursery, Silsoe

Come and visit our beautiful nursery and pre-school based within the grounds of Wrest Park. We offer care for 0-5 year olds 8am to 6pm Monday to Friday for 51 weeks of the year.

We were Rated 'Good' by Ofsted in May 2014 and they commented that 'Staff are enthusiastic, model good social behaviour to children and offer frequent praise' (Ofsted 2014).

We offer all day sessions, am or pm sessions or a 9-3 'school day' session. We accept childcare vouchers and 2,3 and 4 year old funding.

Please call us on 01525 861743 or [info@wrestparkdaynursery.co.uk](mailto:info@wrestparkdaynursery.co.uk)  
[www.wrestparkdaynursery.co.uk](http://www.wrestparkdaynursery.co.uk)



## BURGLAR ALARMS

*New Alarms Fitted or Upgrade Existing Alarms*

### BURGLAR ALARMS

We fit New Alarms - Wired or Wireless Systems  
\*We can service and maintain your existing alarm\*

### CCTV

We fit high quality systems to maximise your security.  
Access your CCTV via the internet or mobile.

### DOOR ENTRY

We fit a range of quality video and audio intercoms  
to suit your needs.

*We are a family run business with over 35 years  
experience in home security and crime prevention.*



[www.maximumsecuritysystems.co.uk](http://www.maximumsecuritysystems.co.uk)

Contact:

**01582 864138 / 07746 111520**

*For a free quote and consultation*



# Root 'n Branch

Your Local Friendly & Reliable Gardener

All aspects of Garden Maintenance undertaken  
• PRUNING • MOWING • WEEDING • PLANTING • HEDGING

Southfields, Shefford  
email: whooley@hotmail.co.uk

**Tel: 07771 537385**

Public Liability  
Insured

## ADAM IN YOUR GARDEN

**TREE SURGERY, HEDGE TRIMMING,  
TURFING, FENCE MAINTENANCE,  
DECKING, PATIO CLEANING**



Qualified, Fully Insured, Competitive Rates  
Free Estimates

**TEL: 01582 518954 MOB: 07828 490360**

**Web Site: [www.adaminyourgarden.co.uk](http://www.adaminyourgarden.co.uk)**

## ANDREW BAKER WINDOWS

9 SHEFFORD ROAD  
CLOPHILL BEDS  
MK45 4BT

SPECIALISING IN UPVC WINDOWS,  
DOORS, CONSERVATORIES,  
FASCIA, SOFFITS, GUTTERS AND  
CLADDING. ALSO AVAILABLE FOR CARPENTRY  
WORK. NO JOB TOO SMALL OR LARGE.

20 Years experience.  
Free local quotes.

**FENSA**

Fensa Registered  
FIVE YEAR GUARANTEE

Contact Andrew: **01525862804 / 07825017855**

Email: **[abakerwindows@gmail.com](mailto:abakerwindows@gmail.com)**

# HIGH QUALITY CARPET, UPHOLSTERY, RUG AND LEATHER SUITE CLEANING

Ring Steve

(Barton) 01582 882620

(Mobile) 07769 042523

Email: [bedscarpetcleaners@gmail.com](mailto:bedscarpetcleaners@gmail.com)

[www.bedscarpetcleaners.co.uk](http://www.bedscarpetcleaners.co.uk)



## McCaffrey

Your central resource for residential  
build, refurbishment and maintenance



General Building Works  
Extensions  
Internal Refurbishment/Alterations  
Garage Conversions  
Loft Conversions

Brickwork  
Carpentry  
Painting & Decorating  
Purpose made Joinery  
Bi - Folding Door Applications

Plumbing and Heating  
Electrical installations  
UPVC/Timber Windows  
UPVC Conservatories

T. 01525 861041

E. [info@mccaffreybuild.co.uk](mailto:info@mccaffreybuild.co.uk)

W. [www.mccaffreybuild.co.uk](http://www.mccaffreybuild.co.uk)



WEC, BUILDING 52, WREST PARK,  
SILSOE, BEDFORDSHIRE, MK45 4HS

COMPANY NUMBER: 7240869

McCAFFREY BUILDING CONTRACTORS LTD



# OSTEOPATHY

**Deborah Beare** BSc (Hons) Ost.  
Registered Osteopath

**The Clophill Centre for  
Complementary Therapy**  
Clophill Fruit Farm,  
Shefford Road  
Clophill

- Cranial & Structural Osteopathy
- Neck & Low Back Pain
- Muscle Tension
- Sports Injuries
- Arthritic aches & pains
- Headaches

To book appointments call: **07969 921112**

## **Washing Machines Dishwashers Dryers Electric Ovens Repairs Servicing Sales**



A local family business offering  
a quality service at a competitive price  
Est. 1981

**Tel: CLOPHILL 860148**  
**or Tim Downing direct on 07969 545 276**

A member of the White Goods Trade Association  
Fully Insured

# MB

## ACCOUNTING SERVICES

accounting solutions for the  
***Self-Employed*** and ***Small Business***  
including

**HMRC tax returns • Accounts • Bookkeeping**

For a totally confidential service at **very competitive rates** contact  
Richard Fairholm T: 01525 861087 M: 07714189994 E: [mbaccounts@btinternet.com](mailto:mbaccounts@btinternet.com)



# **JAMES BONFIELD**

## **CARPENTRY & CONSTRUCTION**

### **ALL CARPENTRY & BUILDING SERVICES PROVIDED**

Double Glazing • Windows & Doors • Granite Work Tops  
Kitchens & Bathrooms • Wood & Laminate Flooring • Loft & Garage Conversions  
*Mini Digger & Driver For Hire*

Call James 7 days a week on

**01462 231734    07595 752466**

jamesbonfieldcarpentry@yahoo.co.uk  
Shefford, Bedfordshire



# *David Carpenter*

## **BUILDING SERVICES**

Friendly local craftsman and restorer Est. 1986

**MOST BUILDING WORK UNDERTAKEN INCLUDING**  
Carpentry and Joinery, Bricklaying, Roofing, Plastering, Tiling  
And much more

Please call me on: 01582 881015 Mobile: 07954 828695  
to arrange a visit to discuss your requirements.

Free estimates provided  
References available

# Advertisers index

## Architectural Services

Daniel Design & Build 24  
S&S Coates Surveying & Design 30

## Auctioneers & Valuers

W&H Peacock 35

## Bathroom Services

Bathroom Vogue 40

## Builders & Carpenters

James Bonfield Carpentry & Construction 47  
David Carpenter Building Services 45  
McCaffrey Build 22  
Peter Sharpe Building Services IFC  
Stuart Benson Building Projects 47

## Carpet Services

Carpet & Upholstery Cleaning 45

## Car Services/Repairs

A&F Motors Ltd IFC  
Automotive Services Bedford 26  
Mint Alloys 41  
TC Coomber Car Services BC

## Chimney Sweep

Poppins Chimney Sweep IBC

## Cleaning Services

Daisy Cooper 42  
Ovenclean 29  
Time to Shine – Window Cleaner 42

## Computer Services

Compu-Doc 42  
The Computer Man 35

## Design and Marketing

Abrahams Creative 21

## Electrical Services

Stuart Drew Electrical Services 32

## Financial Services

AIMS Accountants 34  
ET Accountancy Services 38  
Hills-Howson Financial Services 34  
MB Accounting Services 46  
Savage Accountants 25  
SJ Tax & Accounting Services 27

## Food Suppliers

Woburn Country Foods 41

## Funeral Services

AL&G Abbott, Funeral Directors 33  
Neville Funeral Service 39

## Garden Services

Adam in your Garden 44  
Garden Doctor 37  
Green Thumb Lawn Treatment 40  
Root 'n Branch 44

## Health & Beauty

A Cut Above Hairdressing 27  
Ampthill & Flitwick Physiotherapy 38  
Deborah Pedley Osteopathy 46  
Hairs & Graces 25  
Libra Wellness 25  
Linda Allsop Physiotherapy 27  
Mindfulness Movement & Meditation 26  
Route 66 Barbers 29  
Shamrock Clinic - Foot Health 37  
The Tanning Salon BC

## Home Improvements

Christopher The Painter 22  
Roger Storey - Painter & Decorator 32

## Medical Training Services

EMT Academy 24

## Music and Entertainment

Greensands Community Choir 28

## Nursery Schools

Clophill PreSchool 28  
Clophill St Mary's C of E  
Lower School and Nursery 30  
Clophill Toddler Group 26  
Wrest Park Day Nursery - Silsoe 43

## Pet Services

Bowbellies Grooming Room 23  
Conifer Kennels & Cattery 42  
Lizzie Brown Pet Care 36  
Personal Dog Walker 27  
Stray Cat Rescue 32  
The Bluecat Luxury Cattery 29

## Plumbing & Drainage Services

Beta Plumbing 37  
Chapman & Kirby Heating 38

## Post Offices

Mace Post Office & Stores 31

## Print Services

Fidelity Design & Print IFC

## Public Houses

The Stone Jug 23

## Removals & Storage

Stephens 32

## Repair Services

Tim Downing Repair Services 46

## Security Services

Maximum Security Systems 43

## Take-aways

The Happy Plance 31

## Tuition Services

Rincon Tuition (Spanish & Maths) 36

## Village Hall

Clophill Village Hall 23

## Windows/Replacement

Andrew Baker Windows 44  
AW Windows IBC  
Misty Double Glazing 29

*IFC = Inside Front Cover*

*IBC = Inside Back Cover*

*BC = Back Cover*

# Ads from as little as £50 per year

For further information about advertising in Spotlight,  
please contact our Advertising Manager at [ads@clophillspotlight.co.uk](mailto:ads@clophillspotlight.co.uk)



# Poppins Chimneys

**Chimneys Swept  
Wood and Multifuel Stove  
Installation & Liners**

*Great Service - Great Price!*



**01525 860424 or 07858 688785**  
**mark@poppinschimneys.co.uk**

**NO PRESSURE SALES – YOU DEAL WITH  
THE OWNER FROM START TO FINISH**



- ✓ A-rated windows as standard
- ✓ Composite doors
- ✓ High security
- ✓ Bifolding doors
- ✓ Conservatories
- ✓ Fascias, soffits and guttering
- ✓ Insurance-backed guarantee
- ✓ Fensa certificate



**Contact: ANDY WOOD**

**01582 536944 or 07796 272539**  
**sales@awwindows.co.uk**



See reviews from satisfied customers at [awwindows.co.uk](http://awwindows.co.uk)

## *The Tanning Station & Pebbles Beauty*

- HD Brows
- LVL
- Tinting
- Eyelash extensions
- Spray Tans
- Waxing
- Intimate Waxing
- Mens Waxing
- Massage
- Make-Up
- LCN Gel Nail extensions
- Acrylic Nail extensions
- Jessica GELeration
- Manicure
- Pedicure
- Footcare Specialist
- Facials
- Hair-up



Open 7 days a week



Like us on Facebook



2 Steppingley Road, Flitwick, Bedfordshire. MK45 1AJ  
01525 720095 [www.tanningstation.co.uk](http://www.tanningstation.co.uk)

# **T.C. COOMBER**



MOT'S CLASS 4/7  
SERVICING & REPAIRS  
CAR & COMMERCIAL  
TYRES & EXHAUSTS  
AIR CONDITIONING  
DIAGNOSTIC CODE READING

**Collection  
& Delivery**  
SERVICE AVAILABLE  
Please ask

**AMPTHILL**  
**01525 406330**

UNIT F, AMPTHILL INDUSTRIAL ESTATE, STATION RD, AMPTHILL, MK45 2QY