

Vol 36 | No.7

FREE

CLOPHILL SPOTLIGHT

SEPTEMBER 2014

**LOCAL NEWS AND
VILLAGE EVENTS**

AMPTHILL PRINT CENTRE

DIGITAL PRINTING
DESIGN & MARKETING
DIRECT MAIL

and much more...

...and we're right on your doorstep at

Unit 24 Station Road Ind Est, Ampthill, MK45 2QY
(Just off the A507 Ampthill bypass, past the Post Office)

WE PRINT...

- Stationery
- Newsletters
- Menus & Tent cards
- Brochures
- Flyers & Leaflets
- Catalogues
- Books & Booklets
- Direct mail
- Training Manuals
- Banners & Posters
- Greeting cards
- Calendars
- Labels & Stickers
- NCR pads
- Folders
- Exhibition panels
- CD/DVD duplication
- Photocopying

3 DAY STANDARD SERVICE | SAME DAY AVAILABLE

www.fidelityprint.co.uk

Get a quote 01525 300001 quotes@fidelityprint.co.uk

fidelity[®]

Unit 24 Station Rd Ind Est, Ampthill



D. Andrews
P. Fleckney

MOTORS LTD

Tel: (01525) 860292

Tel: (01525) 404919

208 Clophill Road, Maulden, Bedfordshire MK45 2AF
89 Oliver Street, Ampthill, Bedfordshire MK45 2SA

**CAR AND COMMERCIAL VEHICLES
ALSO CLASSIC & AMERICAN CARS
SERVICING – REPAIRS – BREAKDOWN
SPRAYING – M.O.T.**



Stuart Benson Building Projects

Design, Build and Maintenance including Interior Refurbishments,
Kitchen / Bathroom fitting, Tiling, Flooring, Skirting boards, Doors
Garage conversions. Exterior Decking, Patios, Driveways
Garden Offices/ Sheds

Tel: 07946 579862 or 01525 403083

Email: benson.stuart@googlemail.com

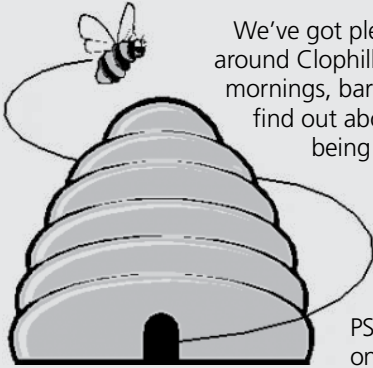


A word from the Editor...

Welcome back...

I hope everyone had a lovely summer break and you're all feeling relaxed, refreshed and raring to go.

This month's Spotlight is packed with articles, including one on Clophill during the Great War and a look at the village's prize-winning Flower Club.



We've got plenty of things to see and do in and around Clophill, too – from choral singing to coffee mornings, barn dances to bees. And you can also find out about two great fund-raising initiatives being organised by local residents.

Pop the kettle on and enjoy reading!

Bye for now!

PS: Don't forget you can now read Spotlight online at www.clophillspotlight.co.uk



The magazine staff

EDITOR/ADVERTISING MANAGER	Helen Gent editorial@clophillspotlight.co.uk ads@clophillspotlight.co.uk	864836
DESIGN MANAGER	Chris Abrahams cmabrahams@yahoo.co.uk	
DISTRIBUTION MANAGER	Steve Smith	860216
TREASURER	Richard Pearson	861110
COPY DEADLINE	20th of the month	

**COVER
PICTURE**

This month's cover picture is a reminder that on 29 September it's the **World's Biggest Coffee Morning**, an annual fund-raising event for Macmillan.
http://coffee.macmillan.org.uk/Home.aspx#.U_34TSI0wdU



Tower tours

St. Mary's old church, Clophill

**Climb the tower
Learn our history
Savour spectacular views**

Now open for bookings

Weekdays - 10am / 2pm

Weekends - available August 23rd onwards

**Max. group size 8*

Adults £4

Children £2

info@clophillheritage.org

07935 911207

Very limited parking on site; please walk if you are able.

© 2015 LRS

News from Clophill Heritage Trust



The Old Church

Our photo shows Doris Pitts, the eldest resident of Clophill Village at 98½ years young, with our trustee Richard Hudson. It was Doris's second trip to the church since consolidation work started – previously, she hadn't been for 30 years because of the anti-social behaviour. Doris is full of support for the church work and said she'd like to get a cup of tea and some cake at the lodges for her 99th birthday. We'll certainly be happy to do better than that for her!

Flying Teddy Bears

Thank you to all the volunteers for helping with the Teddy Bear launch on 5th July. This was a joint event with Clophill Lower School and Clophill Heritage Trust. There were five

launches with over 20 bears in each – a great start to a new family event, especially on a wet, cold day. The teddy bears arrived big and small. One had to be winched up the tower on its own as the full-grown adult-size bear couldn't fit into the launch bag and needed an especially big teddy bear parachute! Well done to Josh Stevens for assisting 'Harry' bear in flying within 8.2m of the target – quite an achievement with the gusts. We hope you enjoyed the winning prize.



The Eco Lodges

A local donation provided the purchase of wild flower and grass seed for the top soil laid around the eco lodges earlier in the year, and a colourful display was on show over the summer months. Vigorous weeding was required to ensure the desirable species were able to set seed. Thanks to the volunteers who helped.

Friends of Old St Mary's

We'd like to invite members of the community to become a 'Friend of old St Mary's'. Being a friend would involve some training about the history of the site as well as landscape and educational information when accompanying selected groups up the tower. If you're interested in helping with our exciting new community asset then please contact info@ClophillHeritage.org



Gift A Song



Caritas Harmony Are Inviting Ladies in Herts, Beds & Bucks To Gift A Song For Macmillan At Christmas

Would you like to meet new friends and do something worthwhile and enjoyable at Christmas? Then come and join this local ladies choir for 10 weeks of rehearsals to perform in a Christmas concert on Saturday 13 December in Dunstable to raise funds for the charity Macmillan Cancer Support. Rehearsals will be held on Thursdays at 7.30pm and no previous singing experience is necessary - contact Wendy for an information pack.

email - info@caritasharmony.co.uk

tel - 01582 652953

www.caritasharmony.co.uk

Charity collection of recyclable goods

Sunday 28th September, 10am-3pm, at 2 The Slade

Recyclable goods including furniture, books, clothes, household items and bric-a-brac will be collected for NOAH, a local charity supporting the homeless. Tinned food items will also be gratefully accepted.

'For the past six years, the children of St Mary's School have been donating their harvest produce to NOAH,' says Vaughan Wilton. 'Every year, the children look at different aspects of NOAH's work and this year they will be learning about how we can recycle what the harvest has given us. NOAH is able to recycle different items, using its workshops and learning academy, giving the homeless and those in need the skills to find paid employment.'

It's hoped that on the day a van can be filled with donations from across the village. Further details from St Mary's School on **860206** or Vaughan on **860113**.



Clophill Open Gardens

Thank you

The Rector and members of the Church Council are indebted to Sue Hughes who did an amazing job in organising and putting together the Open Gardens Weekend in June, along with her team of helpers.

The event proved to be a roaring success, thanks to all the gardeners and everyone who worked and contributed to its sense of fun, adventure and friendliness. It created a real buzz in the village and brought the community together over two wonderful and sunny weekend days.

We'd like, again, to acknowledge and thank those who generously opened gardens for their sheer hard work and to everyone who came along and supported the event. **Sincerest thanks to ALL** the many helpers, refreshment providers, organ players, programme and plant sellers, gatekeepers and others – not forgetting those who worked behind the scenes in preparation, running around and clearing up afterwards!

The record profit of **over £4,000** will be a tremendous help towards the upkeep and running costs of our village church.



Clophill through the years

by Colin Watt

Clophill during the Great War

When the UK declared war on Germany on 4th August, 1914, life in Clophill started an irreversible change. Many village men answered Lord Kitchener's call to enlist, mainly in the Army. Recruitment meetings were held on The Green and at the Cross Tree. The recruit had to be taller than 5 feet 3 inches and aged between 18 and 38.

In November 1914, three Clophill Boy Scouts – Alfred Jeffrey (16), Horace White (16) and William Sharman (15) – joined the Beds Territorials. The young men probably hadn't travelled far from Clophill and saw this as an opportunity for adventure. They thought that we'd easily beat the Germans and that they'd be home for Christmas. But, of course, they were wrong and it turned into a long war of attrition. Horace White eventually joined the 13th Battalion Royal Sussex Regiment and was killed on the Somme, aged just 18. By March 1915, 56 men had volunteered. There was local pressure on young 'eligible' men to enlist. After the Military Service Act (conscription) of January 1916 the total rose to over 100 men from the village.

An efficient mail service was set up as it was realised the letters from home were morale-boosters. Up to 12 million letters a week were delivered to the front lines. Families waited anxiously for news from the front. The letters that the troops wrote home gave the impression that everything was going well. Letters were censored, ostensibly to stop secret information being made public but really to hide the horrors of war from families back home.

In October 1915, Corpl. H.L. Cunnington wrote to his brother, a pupil in the Modern School *"We are having a pretty good time, and getting shelled every few hours. It is great fun as long as you don't stop one, and you would enjoy it immensely if you were here."*

The troops also enjoyed receiving parcels from home. In August, 1917, Private Harris wrote to his wife, saying he'd like a parcel each week, but nothing expensive. *"Send some big arrowroot biscuits and one of your home-made cakes, and don't forget some tobacco and fags. I should also like some lard or dripping in a tin box. You know I should not ask for these things if I did not really want them."*

Of course everyone dreaded getting an official letter saying that a loved one had been injured or, worse still, had died. The Clophill War Memorial records the names of the 24 service men from the village who died: 13 were killed in action, 6 died of wounds, 4 from illness and 1 drowned.

The villagers did what they could to support the troops. Money was collected to send them parcels. Smokers received cigarettes and tobacco, and non-smokers Oxo cubes and chocolate. The men at the front sent back letters expressing their warmest thanks for the parcels sent out from the village.

Feeding the soldiers at the front was an important task and jam was a favourite. When there was a shortage of fruit and the government made an order that 3d a pound would be paid for blackberries school children were given time off school to go collecting. In November 1917, Clophill school children collected 994 lbs of blackberries, the average weight per child being 11 lbs 13ozs. In 1918 they picked 1,212 lbs which was sent away for jam-making.



At the end of 1917 people began to fear that the country was running out of food. Panic buying led to shortages and so in January 1918, the Ministry of Food decided to introduce rationing. Sugar was the first to be rationed and this was later followed by butchers' meat. Clophill, being a market gardening area, might have fared better than urban areas.

The Rector of St. Mary's Church, the Rev. Cecil Lloyd Matthews, left Clophill to become a Chaplain to the Forces. He spent two years at the front and reached the rank of Major. At the end of the war, in a letter of resignation he refers to some who have apparently criticised him. *"I feel that it would be extremely difficult with the memory of what was done and said while I was at the front to work amongst them again in the spirit which is fitting in a parish priest towards his people."* What he did to upset some of his congregation isn't known.

Haynes Park was a training camp for Royal Engineers of the Signals Department. Many were billeted in Clophill and became a popular part of village life, marching to church and organising football matches, dances and concerts. The Parish Room was used as a Soldier's Room. Ladies of the village devoted their time to catering for the soldiers.

The Defence of the Realm Act introduced a lot of restrictions during the period of the war. Activities no longer permitted included flying kites, starting bonfires, buying binoculars, feeding bread to wild animals and discussing naval and military matters. Alcoholic beverages were watered down and pub opening times were restricted to noon–3pm and 6:30pm–9:30pm. Clophill, with its six public houses, must have been particularly affected. In 1916 the Summer Time Act introduced daylight saving by moving the clocks forward by an hour. Some villagers were finding it difficult to adjust. In a letter sent by Mary Ann Diggins to her son, Harry, she says *"They have altered the time and the evenings do seem long."*

On receipt of the news of the signing of the armistice on 11th November 1918 and the cessation of hostilities, the church bells were rung and a thanks-giving service was held in the Parish Church. As the survivors, including the injured, returned home they must have had some interesting stories to tell about their experiences. When the Treaty of Versailles was signed, on 28th June, 1919, it was reported that *"Throughout the village on Saturday evening, parishioners and visitors were in a most enthusiastic mood. Banners and flags were hoisted on the Church tower, and on chimney stacks at the principle residences. Rockets and other fireworks made things very lively, and the bells of St. Mary's Church rang out merrily. The report of guns was incessant, and the residents of the main street got little rest until the early hours of the morning. At the morning and evening services at St. Mary's on Sunday, the National Anthem and special hymns of thanksgiving were sung."*



In August, 1919, a village Victory And Peace Fête was held. It started with an open-air service of thanksgiving. A cricket match between 'married' and 'single' was won by the former. After the judging of the decorated cycles, prams and horse turnouts, a procession around the village was led by the Amphill Band. Following the baby show (won by Myrtle Tiffin) a free tea for the children and a 'substantial repast' for the adults was provided on the rectory lawn. To mark the occasion, upwards of 100 sailors and soldiers of the parish were the recipients of silver medals, provided by the parishioners and presented by the Mid-Beds MP, Max Townley. After the traditional country sports including egg and spoon race, three-legged race and the sack race, a huge bonfire and fireworks concluded the day's celebrations.

The war memorial is a lasting reminder of the 'ultimate sacrifice' that 24 villagers made and the effect it must have had on their families and neighbours.

CLOPHILL METHODIST CHURCH

invite you to their

BARN DANCE

with the

Ivel Valley Band

Caller: Joan Rutt

Saturday, 27th September

7.30pm-11pm

CLOPHILL VILLAGE HALL

Admission £8, includes buffet

Bring your own drinks

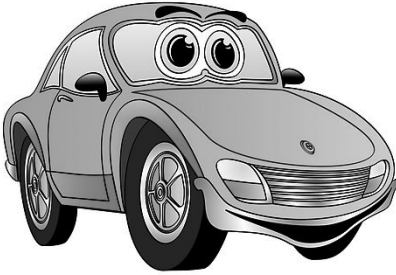
**All proceeds to Clophill Methodist Church
and**

**Leonard Cheshire DisABILITY Home,
Amphill**

**For tickets & further information call 01525 860695
or 01525 860918**

Let's talk about Tax and Cars

with Sally Cobban



The tax office doesn't really like people to have cars through their own limited companies and business so it has made some harsh tax consequences. There are also cash-flow issues when looking at cars. I'm going to talk about cars for people who are self-employed through their own sole trader or limited company.

Firstly, from a cash-flow perspective there are many ways to finance a car these days. If you purchase a car – even if you HP it or have a loan – then as long as you or your business own it, you can claim capital allowances for it. (You can't claim the VAT back on a car if you are VAT registered.)

Capital allowances are a tax deduction that's based on CO₂ emissions, so the lower the CO₂ emission on the car then the higher the tax deduction is (see rates below). Both companies and sole traders can claim capital allowances for cars. Unfortunately, there aren't many cars around that fulfil the lower CO₂ emissions.

If you lease a car – and therefore don't own it – no capital allowances can be claimed. Instead you may be able to claim the lease payments (or some of them) as an expense in your accounts **BUT** you need to watch out for CO₂ emissions again as a percentage of the lease payments won't be deductible and only 50% of the VAT is claimable if you're VAT registered.

If you're a limited company and you're leasing or owning a car then provided that it's not a pool car you'll also have to incur a P11D – personal tax charge on the driver of the car – all based on the CO₂ emissions, as the car will get taxed as a benefit in kind to the individual.

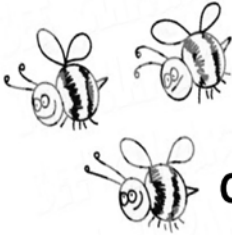
CO₂ Emission summary table for petrol and diesel car

Multiply the list price of the car by the % to get the number that will get taxed as a personal benefit in kind through a limited company.

CO ₂	% petrol	% diesel
1-75	up to 5	up to 8
76-124	up to 17	up to 20
125-139	up to 20	up to 23
140 -159	up to 24	up to 27
160-189	up to 30	up to 33
190-209	up to 34	up to 35
Over 210	35	35

If you'd like a more precise % or have any other questions please do get in touch with me at sally@sjtax.co.uk or **07899 808592**; www.sjtax.co.uk

St Mary's Church, Clophill



Come and listen to a talk on

The Busy Buzzy Life of Bees

by Kate & Andrew Gardener..

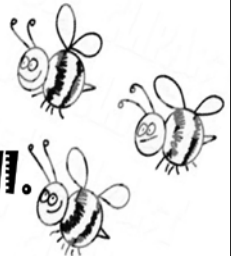


Thursday 11th September
7.30pm

in St Mary's Church, Clophill.

Tickets £5 - including refreshments

available from Christine Fellini 861912 or Heather Jarvis
860548





READER'S PHOTO

Thank you to Mary Sutton for sending in this picture of a flooded High Street after a water main burst on 17th July. *If you have a photo you'd like to include in Spotlight, email editorial@clophillspotlight.co.uk*

Cora's Open Garden

in aid of Alzheimer's Research UK

On **Saturday 27th September**, Cora Sheppard will be setting up stalls in her garden at **122A High Street** to raise money for **Alzheimer's Research UK**. Come along between 12.30pm and 5pm to browse for bric-a-brac, buy a cake or try your luck at the tombola.

'Alzheimer's Research UK relies entirely on generous support so please come and support me for this worthy charity' says Cora.

If you'd like to donate bric-a-brac, bake a cake or donate a raffle prize, please contact Cora on **860230**



**Alzheimer's
Research UK**
Defeating Dementia



“The Beauty of Clophill”

**An exhibition of art and photography
by our own local artists at
St Mary’s Church, Clophill**

Friday 31st October

Gala preview Evening 6pm-9pm

Tickets £5, includes wine and canapés

Saturday 1st November

Viewing from 11am-3pm

Entry by donation. Refreshments available

Sunday 2nd November

Viewing from 11am-3pm

Entry by donation. Refreshments available

Tickets available from Heather Jarvis **860548** or Christine Fellini **861912**

We hope you've all had a wonderful summer holiday. We're really looking forward to our second year of Clophill Preschool and aim to make this next year even better than the last.

If you haven't yet had a chance to visit us or read some of our previous articles have a look at the poem below that one of our brilliant parents, Vicky, wrote for us to sum up our first year. Vicky read this out in front of everyone on our final day of term and had many of us recalling fond memories, laughing at all the fun times and, of course, crying as we realised just how much our Preschool means to all our children and their families.

The Phoenix

'Twas the last month of term 2013
The future of ZigZag was in doubt it would seem
So the doors were closed on the last day of term
But the children were sad; there was no place to learn

The holidays passed and September soon came
And a phoenix was seen to rise out of the flames
Who's that at the door? It looks just like Chris
Really, they said, this is taking the...

So at first it was just a snug group of two
My little boy and Daisy Doo
They liked making changes and tried things that were new
And the children found amazingly great things to do
A wedding! A rocket and they built their own car
They danced and they sang (a very annoying monkey song)

They were filthy in mud with huge grins on their faces
And they made hotels to keep all the bugs in one place!
They played outside in the wind, rain and snow
They saw flowers and spiders and watched vegetables grow
They met the police, the reverend, a chicken and a mole...
And anything else Chris can trap in a hole!

Snack time was good trying persimmon and peas
And sometimes there were olives with the biscuits & cheese!
By the spring the numbers were well over double
And Imogen was seen floating around in her bubble
For Mother's Day she emerged as a gold butterfly
She stole the show, I thought I might cry (with laughter)

Fast forward to Pirates and Treasure...What Ho!
A treat from Julie, an Imajica show!
A visit from Ofsted, who graded them good
Sports Day for all and a trip to Wood (side!)

So a year has passed
Please, let's be upstanding
We're the parents
...and we say
Your Preschool's
OUTSTANDING!!!



This is why we started our journey back in September 2013, so the children of our village and the surrounding villages had a chance to experience all these fantastic fun activities we love to offer. We focus on the introduction of information and ideas linked to the individual's interests and curiosities rather than prescribed topics and a rigid rota of activities day in day out.

So if your child loves to play outside in the mud or search for insects and bugs, or enjoys imaginative role play or mixing colours in the palms of their hands, please call us on **07732 872685** or just pop up to Clophill Village Hall and have a look at what we offer. We're always happy to show you around. www.clophillpreschool.co.uk

Willington Then and Now

Monday 6th October
Speaker: Rob Bollington

Rob Bollington, chairman of Willington Local History Group and the author of *Willington and the Russells*, will present a general history of the village of Willington.

War Poetry, from Aeschylus to the Helmand province

Monday 3rd November
Speaker: Mark Steinhardt

Poetry from actual combatants. Experience the taste and first-hand perception of war as it happens.

Flitwick Library Lecture Theatre, 7.30pm for 7.45 pm
£2 for members and £2.50 for visitors, payable on the door

For further details contact: clive.makin@ntlworld.com
01582 655785, www.adalhs.org.uk

Ampthill & District Archaeological & Local History Society



Bedfordshire
Cambridgeshire
Northamptonshire

Wildlife walks & talks



Small Mammal Trapping and Identification

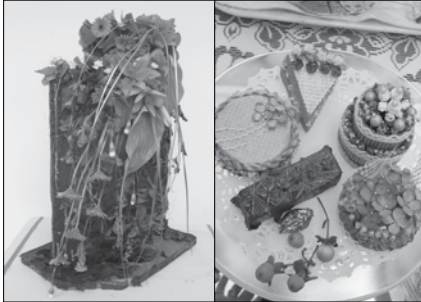
Saturday 27 September, 8.30am, Flitwick Moor

Join Richard Lawrence, BNHS mammals recorder, and Colin Carpenter, the moor's warden, to see what's in the traps. We're determined to find something small and furry on the moor's pasture – will we succeed?

Places are limited, booking is essential.

To reserve a space, or for additional information,
please email flitvale.info@gmail.com
or ring **Ann** on **07890 347327** after 6pm or at weekends

Clophill & District Flower Club



Left pic: Gillian Thomas's 'Slant of Light' arrangement.
Right pic: Linda O'Toole's 'Afternoon tea' made with natural plant materials

Our club is always active and we enjoy using our skills and love of flowers at every opportunity. In June, the Home Counties Area of NAFAS held the **Area Floral Art Show** at Hatfield House, where the best of arrangers from Bedfordshire, Hertfordshire and Essex compete in different classes.

Our club was well represented and were very successful. In the Inter-Society Class called **'Summer Fling'** we won 1st prize, staged by Lesley Sturdy and Brenda London. Our members Jane Williams, Gillian Thomas, Linda O'Toole and Carolyn Cranswick all **gained 1st prizes** in four other classes as well as two 2nd prizes and 3rd prize. We were awarded 'The Best use of Garden Plant Material' and 'The most imaginative use of plant material'. Three of the prize winners are students at our Flower Arranging Classes.

The **World Floral Art Competitions** were held in Dublin in June and 10 of our members went to see what inspirations we could gain from the competitors. It was a fantastic show and we came away with lots of ideas.

In July, we staged a Flower Festival at Campton Church. The theme was **'A Commemoration of Life in 1914'** and featured life in Campton in 1914 in the Village School, at Chicksands Priory and in the Manor House.

During the summer our members also arranged flowers for four weddings. The money we raise from this service helps to fund our club and we also donated to our favourite charities. *Carolyn Cranswick, Chairman of Clophill and District flower Club*



Campton Church festival

- *Our meetings are always entertaining and informative and we welcome visitors to every meeting. Details of our popular flower arranging classes are available from Carolyn on 01462 815433.*

**On October 2 we're having a 'floral dabble evening'
 – just bring a pair of scissors and join in five different activities**



For our meeting on Thursday 3 July we welcomed Lisa Howarth, who is not only a flower arranger and demonstrator, but also has her own floristry shop, 'Blooming Lovely Florist Ltd' at Upper Caldecote. Before moving into floristry, Lisa studied horticulture at Cambridge Botanic Gardens – where her claim to fame was being **pushed in a wheelbarrow by Alan Titchmarsh** for a charity event!

Lisa demonstrated six beautiful arrangements in a variety of styles, using gerberas, roses, gladioli, lilies, orchids and a range of fresh greenery. She also gave us **some great tips** – like using olive oil instead of leaf shine on large leaves and removing the tops of gladioli flowers, as they tend not to open. *Joan Tarmu*

On Golden Pond



Written by Ernest Thompson

Directed by Jaymes Sygrove

This Amateur Production is Presented By Arrangement With Joseph Weinberger Ltd.

PRESENTED BY TADS THEATRE GROUP, TODDINGTON

September 19th 20th 25th 26th 27th @ 7.45 pm

Adults £8 Concessions £6

**For Tickets Call 07952633234
or Book Online at**

www.tadstheatre.org



Charity No. 294694



News from Clophill Parish Action

Pollution and Recycling Group

There have been changes to recycling in Central Beds and we can now recycle the following items with our weekly collections:-

- **Reusable textiles**

Includes clothing, towels, household linens, fabrics and shoes (tied in pairs). Put into a plastic bag and leave beside your bin. **NO** pillows, duvets etc or torn or stained clothing, which should go in the black bin.

- **Batteries**

Bag separately. **NOT** printer cartridges – the school collects these.

- **Small electrical items**

See card supplied by council for exceptions.

Reminder of recyclable items

- Paper and card – but **NOT** large cardboard boxes, which should either be torn into A4-size pieces or taken to the tip
- Food and drinks cans, washed and drained
- aerosol cans • clean aluminium foil
- jam jar tops • clean clingfilm
- small amounts of packaging materials
- plastics – any clean and dry food packaging, drinks bottles, coffee jar tops, cleaning product containers (washed and drained)



HELP MAKE CLOPHILL GREENER AND CLEANER!

Old Time Music Hall

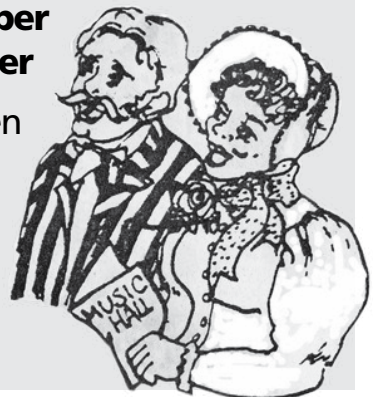
8pm, Friday 26th September

7.30pm, Saturday 27th September

Village Hall, Flitwick Road, Maulden

Come along and commemorate the outbreak of WWI with displays, sketches and sing-alongs. Licensed bar. Edwardian/WWI dress optional.

Tickets £10, available from
01525 405732 and 01525 404364



AMPTHILL & DISTRICT CHORAL SOCIETY

Would welcome new members!

*Why not come along to the new season's first meeting
on Monday 8th September, at 7.45 pm
at Redborne School.*

There are no auditions, just a love of singing.

*We are Ampt Hill's oldest choir and perform a very varied
programme of music at our Christmas and Spring Concerts.
Singing together is excellent for your health and wellbeing.
We are a friendly group with several social activities too!*

For more information telephone 01234 357750

COME AND JOIN US

Christine's quick 'n' easy recipe

Cod Neapolitan Style



INGREDIENTS Serves 4 as a main course

- 800g fresh cod loin
- 1 large clove of garlic
- a splash of extra virgin olive oil
- tin of chopped tomatoes
- 10 pitted black olives, chopped
- 1 tbsp sultanas
- 1 tsp of capers (washed if using salted ones; rinsed if using capers in brine)
- 1 tsp pine nuts
- plain flour for dusting
- salt and freshly ground black pepper
- handful of chopped flat leaf parsley
- vegetable oil for frying

1. Heat the olive oil together with the garlic clove until the garlic is golden but not browned (this can be discarded if you wish).
2. Add in the tomatoes, olives, capers, pine nuts and sultanas.
3. Season to taste and simmer for about 15 minutes.
4. Cut the cod into portions, dry thoroughly, season and dust with flour.
5. Fry the cod portions in the vegetable oil until a nice golden brown, then drain on kitchen paper.
6. Add the cod portions to the tomato sauce and simmer gently for about 30 minutes until all the flavours have come together.
7. Add in the chopped parsley just before serving.

Italians would eat this with some nice crusty farmhouse bread, but you could also serve with new potatoes.



Slovakian Cookery Demonstration

13 September at 11am

Henrieta Nemetova will give a demonstration of traditional Slovakian dishes.

Venue: 3 Beverley Gardens, Clophill

Tickets: £15 in advance from Christine on 01525 861912

There will be a fabulous raffle, so please remember to bring your wallet. All profits will be donated to St Mary the Virgin Church, Clophill, restoration fund.

WARDEN ABBEY
The community vineyard

Heritage Open Day & Wine Sale

Sunday 14th September, 11am-4pm

Come and find out about the history of the Medieval vineyard and abbey and how the vines are cared for all year round. There will also be educational encounters with owls and other animals, BBQ, refreshments, wine tastings and stalls.

Plus the latest Warden Abbey wines will be available to taste and buy (cash and cheques only).

Free entry and parking. Please note, this event may not be suitable for those with limited mobility.

For more information and directions
phone **07981 113714** or go to **www.wardenvineyard.org.uk**

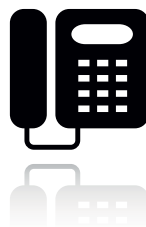
Houghton Close Surgery

As from 6th August 2014

Our telephone number changed to

01525 300898

Our telephone lines now open from 8.30am



Coffee Morning *in aid of Macmillan*

Friday 19th September, 10.30am, St Mary's Church

Clophill Methodist Church and Clophill St Mary's Church are joining together to host part of the World's Biggest Coffee Morning. Please join us for coffee and cake to support this worthwhile cancer charity.

**WE ARE
MACMILLAN.
CANCER SUPPORT**



Clophill Parish Council

Notes from the Annual Parish Council meeting held on 29th July 2014

Readers are reminded that this is a resume only of the meeting. The parish council minutes are published and can be found on the internet after they are authorised (approximately five weeks after the relevant meeting).

Public Question Time

There was one question from a villager who attended the meeting. It concerned the anti-social behaviour and foul language used by some youths, particularly at the recreation ground. The recreation ground is for use by all and this type of behaviour can't be allowed to spoil the enjoyment of the village by a small minority. Together with the PCSO the parish council will work to educate and try to stop this.

Police Report

The council was visited at the meeting by one of our PCSOs and gave a report regarding crime within the village. The previous topic was discussed to see what practical help can be given. She then gave an overview of crime and offences within the village. There had been two burglaries during the last month. This is a low number of offences BUT one such offence is one too many for us. The message, as always, is keep your homes secure and report suspicious people or incidents.

Fatality at the Lakes

Most parishioners will be aware of the tragic death of a 16 year old in the lakes at the old quarry site in Clophill. The parish council extended their deepest sympathies to the family.

The Lakes Site is privately owned by Evonik and they have a local office at Milton Keynes. The site was put up for sale last year and there were several interested parties, including one local developer. The parish council gave certain undertakings that were reported last year both in its minutes and Spotlight. Nothing, however, seems to have moved the situation on. The council has joined with other agencies to try to prevent any further accidents at this site. To this end a letter has been written to the Managing Director of Evonik seeking a meeting to discuss safety issues on the site to see if improvements can be made.

The Lands Committees

Recently the water main burst on the High Street. This is the second time in recent years that there has been a major leak. Anglian Water state that the water main needs replacing. Your parish council is liaising with the company to try to remedy the situation.

We're still awaiting a date from Amey (the Bedfordshire Highway's contractor) for the removal of the redundant footbridge at The Green.

Hay Close

Agreement has been reached by all parties for a way leave (right of way) over parish owned land. The legal agreement will ensure the protection, in particular of The Slade, from the use by equestrian traffic, which will be barred from using the parish owned right of way for access to fields to the west of parish property.

Clophill Parish Council

Continued

Planning – July/August 2014

Applications Received by Central Bedfordshire

CB/14/02166/FULL

Location: 22 High Street
Proposal: Erection of front porch to replace existing one
Applicant: Mr A Myott

Proposal is to replace existing porch with one slightly larger and sympathetic to the dwelling. It almost exactly parallels an earlier (2008) application which was supported by the PC and approved by MBDC/CBC. There's no impact on neighbours, nor on the Conservation Area.

SUPPORT

CB/14/02892/FULL

Location: 100 High Street
Proposal: First-floor rear extension to existing dwelling and erection of a three-bedroomed dwelling with associated external works
Applicant: Mr V Bhandari

100 High Street is the west of the two semi-detached cottages to the immediate east of the school. The developer's proposal is to extend and modernise the interior of the two-bedroomed cottage, which extension will align with neighbour 102, and construct a three-bedroomed dwelling on the land immediately adjacent to the school, ensuring the provision for ample car parking within the curtilage. Much preparatory planning work has already been undertaken with CBC. The provision of a new three-bedroomed house is helpful. There are no planning reasons for objecting, however the school response, unlikely to be favourable, is awaited and the PC will ask for strict conditions to ensure privacy.

SUPPORT

CB/14/02313/FULL

Location: 126B High Street
Proposal: Change of use back to residential from D2 Leisure
Applicant: Mr K Armstrong

Consequent on CBC approval for an overlooking dwelling at 126A High Street, applicant plans to convert present fitness facility at far end of garden to No 126 back to the original residential status.

SUPPORT

CB/14/02708/PAAD

Location: Mouse Farm, Shefford Road
Proposal: Prior approval for change of proposed change of use of agricultural building to a dwelling house
Applicant: Mr & Mrs M Hawkins

Proposal, outside the village settlement envelope, is to convert the existing redundant agricultural building into a dwelling, retaining much of the current appearance, on a

Clophill Parish Council

Continued

single floor on the same footprint. The proposal will contain a large kitchen/diner/sitting room, utility room, three bedrooms (all with ensuite and master with dressing room). Although PC has objected on grounds of new, additional ribbon development along Shefford Road, winter flooding of the site, and the unsuitability of facility for conversion, proposal is in line with the latest government policy for redundant agricultural facilities. PC response seeks to ensure that, if approved, only the immediate surrounding land and entry (and no more) is involved so that remainder of Mouse Farm may not be developed.

OBJECT

CB/14/03202/FULL

Location: 32 Cainhoe Road
Proposal: Two-storey side extension and single-storey rear extension
Applicant: Mr & Mrs Thoullass

Proposal is to extend this three-bedroomed 1960s house into a four-bedroom with an ensuite, and extensively modify and modernise the interior. The garage is retained, although brought forward. The extension faces the rear of a Back Street garden and won't impact on neighbours.

SUPPORT

CB/14/03256/FULL

Location: 'Mayfield', Shefford Road
Proposal: Demolition of flat-roofed garage and outbuildings, and erection of two-storey side/rear extension and conservatory
Applicant: Mr & Mrs S Litchfield

Effectively, this proposal is to extend the rear and rear sides of this three-bedroomed dwelling into five bedrooms with a conservatory. The house is located on the north side of Shefford Road, the last but one before the Beadlow turn. There's no impact on neighbours nor the general scene.

SUPPORT

Applications Approved by Central Bedfordshire

CB/14/01107/FUKK

Location: Land to east of Castle Hill Court, Shefford Road (Greene King site)
Proposal: Erection of nine dwellings, including access from Shefford Road (six) and through Castle Hill Court (three)
Applicant: Greene King/Mr B Sherry

Proposal follows government authority for ten dwellings to be constructed on this site. Following detailed negotiations with CBC and responses by the PC and neighbours, the proposal (for nine dwellings) has finally been agreed with many conditions. These are designed to protect the privacy of neighbours, landscaping, the creation of a footpath along Shefford Road and a contribution to traffic calming. Three dwellings will be affordable, with access via Castle Hill Court. With strict conditions, the PC had supported.

Clophill Parish Council

Continued

CB/14/01684/FULL

Location: 10 Great Lane
Proposal: Erection of two-storey part-side, part-rear extension, associated internal alterations, new front porch, replacement doors and windows, associated landscaping including formation of three new parking bays and refuse bin area and pedestrian external steps
Applicant: Mr J Gill

Proposal seeks to enlarge and modernise house in dominant situation, providing parking space for vehicles and bins. Approval contains conditions re planting, need for parking area to be completed first to ensure no works vehicles or materials block the road and no changes allowed to approved plans. PC had supported with conditions.

CB/14/01867/FULL

Location: 22 Goodhall Crescent
Proposal: Demolition of existing garage and erection of a two-storey side extension
Applicant: Mr 7 Mrs M Hollick

Proposal is to add a two-storey side extension to this semi-detached house, providing a fourth bedroom and retaining a longer garage. PC had supported.

CB/14/02140/FULL

Location: 32 High Street
Proposal: Demolition of rear extension, with single-storey rear extension, part garage conversion with new pitched roof
Applicant: Mr & Mrs G Toms

Within the Conservation Area, this row of 1860s houses does nothing to enhance that area. This proposal improves the house interior and, in a small way, is actually a visible improvement without impacting neighbours.

CB/14/02550/FULL

Location: 24 High Street
Proposal: Erection of part two-storey part single-storey extension
Applicant: Mr P Samuels

Proposal is to infill the inset south-west corner and extend the ground floor element to enlarge the existing small kitchen and add an ensuite wet room to the main bedroom. All this will be at the rear of the house and won't impact neighbours. PC had supported.

Application Withdrawn

CB/14/01689/PAAD

Location: Mouse Farm, Shefford Road
Proposal: Prior notification of change of use from agricultural building to dwelling
Applicant: Mr M Hawkins

Clophill Parish Council

Continued

Proposal was to convert disused agricultural building (mainly used for sheep) into a domestic dwelling. PC had objected. But see new application, above.

Applications to Trim Trees in the Conservation Area

CB/TCA/14/00262

Location: 3 Great Lane
Proposal: Trim height/span of beech tree by 30% located behind holly hedge on boundary Little Lane. For info only unless objected to
Applicant: Mr B Adams

CB/TCA/14/00285

Location: 28 Back Street
Proposal: Reduce/trim/shape various trees in back garden. For info only unless objected to
Applicant: Mr R Gevargiz

The next Parish Council meeting will take place at 7.45pm on 30th September, in the village hall with a surgery at 7.30pm

Parish registers for September

1814

Baptisms

September 14 Charlotte Palmer
September 23 Henry Chapman
(father, cordwainer)

Burials

September 23 Charlotte Palmer
(see baptisms)
September 25 Elizabeth Burrows, 37

1864

Baptisms

September 4 Emma Ann Joyce(?)
David Roberts (?)
Sarah Odell (?)
Mary Bottoms
Charles (?)

Marriages

September 17 John Willison, 19,
to Jane Everitt, 18

Burials

September 20 George Harris (?)

1914

Baptisms

September 20 Victor John Richaedson
No marriages or burials recorded

1964

Baptisms

September 5 Benjamin Ashwell Caves

Marriages

September 12 George Robinson
to Mary Chisholm

ST. MARY'S CHURCH REGISTERS FOR JULY-AUGUST 2014

Baptisms

July 27 Leo Andrew Compton-Jones
Savanna Faye Walsh
August 24 Lucy Isabelle Topliff
Eva Grace Isobel Sharp

Funeral

July 7 Yvonne Summerfield

If you have any stories or information about the people named in the records, which you'd like to share with us, please get in touch.

What's on in and around Clophill

SEPTEMBER		Thursday 11th The Busy Buzzy Life of Bees A talk by Kate and Andrew Gardener. 7.30pm, St Mary's Church, Clophill. <i>See this issue for ticket details</i>
		Saturday 13th Slovakian cookery demonstration 11am, 3 Beverley Gardens, Clophill. <i>See this issue for ticket details</i>
		Sunday 14th Warden Abbey Vineyard Heritage Open Day and Wine Sale Wine tastings, stalls, BBQ. 11am-4pm. Free entry and parking. <i>See this issue for full details</i>
		Sunday 14th Free entry to the Ailesbury Mausoleum & Crypt 3pm-5pm. Plus tea and cakes in St Mary's Church, Church Road, Maulden.
		Friday 19th Coffee morning in aid of Macmillan Cancer Support. 10.30am, St Mary's Church.
		Saturday 20th Coffee morning 10.30am-noon, Beverley Court. In aid of the Air Ambulance and Clophill Tuesday Club.
		Friday 26th Old Time Music Hall A commemoration of the outbreak of WWI with displays, sketches and sing-alongs. 8pm, Village Hall, Maulden. <i>See this issue for ticket details</i>
		Saturday 27th Barn Dance 7.30pm-11pm, Clophill Village Hall. <i>See this issue for details and ticket prices</i>
		Saturday 27th Old Time Music Hall A commemoration of the outbreak of WWI with displays, sketches and sing-alongs. 7.30pm, Village Hall, Maulden. <i>See this issue for ticket details</i>
	OCTOBER	
		Friday 31st 'The Beauty of Clophill' Art and photography exhibition by local artists. 6pm-9pm, St Mary's Church, Clophill. <i>See this issue for ticket details</i>

On every month...

Tuesdays and Fridays

• **Boxing Club** Kids' club: 4-11-year-olds, 6pm-7pm; senior club: 12 upwards, 7pm-8pm. £2.50 a class. See 'Village Groups' for contact details

Every Wednesday

- **'Tea and Chat'** in Clophill Methodist Church Schoolroom, 10.30am-noon
- **Celtic Evening Prayer**, Clophill Methodist Church, 7.15pm. All are welcome
- **Zumba Toning**, 8pm-9pm, Clophill Village Hall

Every Friday

- **Clophill Toddler Group** Clophill Village Hall, 10am-noon See 'Village Groups' for contact details

One Saturday a month

- **Messy Church** Clophill Methodist Church, 4pm-6pm, September 20th; October 11th; November 15th; December 13th
All-age craft activities, worship and a meal for all the family. No fixed charge, donations welcome to cover costs, children must be accompanied by an adult. See 'Village Groups' for contact details.

If you have any diary dates that you would like included on this page, please email clophillspotlight1@hotmail.co.uk

Useful numbers

Gas (Emergency)			0800 111999
Electricity (Emergency)			0800 7838838
Emergency Fire/Police/Ambulance			999
Water/Sewage (Anglian Water)			0845 7145145
Telephone	(Customer Services) 150	(Faults)	151
Highways Department (Central Bedfordshire Council)			0300 3008049
Benefits Agency (Bedford office)			01234 361500
Registrar's Office (Births/deaths/marriages)			0300 3008089
Rail (Enquiries)			0845 7484950
Buses 01234 262151	(Link A Ride) 01525 840511	(Flittabus)	01582 406561
Luton Airport			01582 405100
Swimming	(Flitwick) 01525 717744	(Robinson Pool)	01234 212479

LIBRARIES

Bedford	01234 350931	Ampthill	01525 402278
Barton	01582 881101	Flitwick	01525 715268

LOCAL GOVERNMENT

Central Beds Offices (Chicksands)			0300 300 8000
Mid-Beds MP		Nadine Dorries	01462 811992
Central Bedfordshire Councillors		Michael Blair	01525 404513
	Paul Duckett 07988 184061	Mark Smith	01525 402560
Clophill Parish Council		Peter Clarke	01525 861179
	(Clerk)	Mrs Lyn Lyman	01908 584159

HOSPITALS

Bedford (North & South)	01234 355122	Admissions	01234 261150
		Appointments	01234 359012
Luton & Dunstable			0845 1270127

DOCTOR'S CLINICS

Ampthill	(Houghton Close) 0844 8151055	(Oliver Street)	01525 631395
		(Greensands)	01525 631390
Shefford	Enquiries 01462 818620	Appointments	01462 810034
Barton 01582 528700		Flitwick	01525 715300

POLICE

County Police HQ		Non Emergency	101
Ampthill Station			01234 841212
Clophill Local Policing Team			101
			01234 842613

CHURCHES

St Mary's Parish Church	(Gill Jones) 01525 861058	or (Liz Henman)	01525 860108
St Francis of Assisi Shefford			01462 813436
Clophill Methodist Church		(Mr Jim Davies)	01525 860829






SCHOOLS

Clophill St Mary's C of E Lower School & Nursery	(Headteacher Mrs C Spurgeon)		01525 860206
Harlington Upper School , Harlington			01525 755100
Redborne Upper School , Ampthill			01525 404462
Robert Bloomfield Middle School , Shefford			01462 628800

Village groups

Beverley Court	Sharon Soper	860920
Boxing Club	Loraine Freeman	07714 014484
Brownies	https://enquiryym.girlguiding.org.uk	
Christians Together in Clophill	Fergus Milne	860894
Clophill Community Care	Duty Contact	07791 773705
Clophill Heritage Trust	Ali Bradbury	07894 710001
Clophill Parish Action	Ali Bradbury	07894 710001
Clophill St Mary's C of E Lower School & Nursery	Sharon Kempson	860206
Clophill Toddler Group	Emma Topliff	07921 810424
Clophill United Charities	Gillian Hill	860539
Conservation Group	Brian Adams	862297
Flower Club	Gillian Hill	860539
Friends of the Cheshire Home	Sue Pearson	861110
Funzone After School Club	Rosemary Ilett	860274
Indoor Carpet Bowls	Tony Meredith	860754
Messy Church	Victoria Higgins	07920 568861
	victoriajhiggins@hotmail.co.uk	
Neighbourhood Watch	Mick Everitt	861049
Pre-school	clophillpreschool@gmail.com	07732 872685
St Mary's PTA	Charlotte Benjamin	861185
Scouts and Cubs	Ralph Rayner	403956
Tuesday Club	Betty Hampson	860750
Village Hall Booking Secretary	Marilyn Browning	07821 643936

TREE SERVICES

-  Fully qualified and insured
-  Large or small trees
-  All aspects of tree work undertaken
-  Hedge trimming
-  Free quotes

Michael Martin

t: 01525 860771

m: 07598 767753

e: mmtreeservices@outlook.com



CLOPHILL TODDLER GROUP

Understanding the importance of a child's play

LOTS OF TOYS, SPACE AND FRIENDS
FOR BABIES AND TODDLERS UNDER 3

FRIDAYS 10.00 – 12.00 at the Village Hall
See 'Village Groups' for contact details



Ads from as little as £50 per year

For further information about advertising in Spotlight,
please contact our Advertising Manager at ads@clophillspotlight.co.uk

Telephone
**01525
860526**

The Stone Jug

A Free House
BACK STREET, CLOPHILL

The matriarch (yes, that would be Joyce) did a good job of spend, spend, spend during 2013 – and so we need your help to readdress the balance of the economy and make 2014 the year to visit 'The Jug'!

Still quality home-cooked lunches.

Still quality real ale.

Still good conversation in a relaxed atmosphere.

Still no credit card machine (but there soon will be!)



REMEMBER OUR MOTTO
"A VISIT TO THE JUG IS BETTER THAN GOING TO A PUB"
CHEERS JOYCE & VIKKI

Compu-Doc®

Sick PC or laptop?

Call the Doc for -

Hardware & software

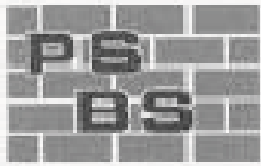
Diagnosis & treatment

01525-402227

John.stafford@compu-doc.biz

"Treating local computers since 2000!"





PETER SHARPE

BUILDING SERVICES LTD

Call us first for ALL your building works and get reliability, quality & sensible prices.

Domestic extensions

Design & build service

General building works, drives, patios

Carpentry, kitchen fitting, wall & floor tiling

Laminate flooring & hardwood flooring

Mini digger and driver hire

Electrical installations including
Building Regulation part P certification

Roofing repairs carried out

Conservatories, UPVC windows

'BEDFORDSHIRE'S PROFESSIONAL BUILDER'

01525 872762 / 07850 803021

email: psbsltd@btconnect.com

Mobile Hairdresser

Reasonable prices

Reduced price for 2 or more
clients per household

Senior Citizens discount

Text or call Corrane on

07783 622602

01525 630740



mobile beauty treatments to fit in with busy lifestyles



...because everyone deserves to be pampered

Hot stone and Swedish massage
Manicures & pedicures (Shellac gels available)

Waxing

Eye treatments

Facials

Affordably priced... all with the convenience and
comfort of being in your own home

Gift vouchers available

For more information and to make
an appointment please contact:

Elizabeth Warfield (member of BABTAC)

Tel: 07816 789071

Email: lizziewarfield@hotmail.co.uk

Welcome to Clophill St Mary's C of E Lower School and Nursery

St Mary's
CLOPHILL
C of E SCHOOL

St Mary's is a Voluntary Aided Church of England Lower School based in the village of Clophill. We are a small friendly village school with close links to the local community, taking children aged from 2 years 7 months to 9 years.

St. Mary's is a Values Based school which provides children with a framework for living, tightly woven into the positive Christian ethos of the school.

Our vision at St Mary's is to provide a secure, inclusive and stimulating child centred environment, where all children are inspired to achieve their full potential.

Our aim is that every child will develop as a caring, respectful member of the community and society as a whole. We will achieve this through a creative curriculum based on our values, reflecting the Christian ethos of our school.

**Please call us on 01525 860206
to arrange a visit**



High Street, Clophill, Bedfordshire, MK45 4BE
Tel: 01525 860206 stmarysclophill@cbc.beds.sch.uk www.stmaryslower.info

ARCHITECTURAL DESIGN AND SURVEYING SERVICES

Professional architectural design services provided for all types of private residential building projects with all necessary council approvals obtained

We offer a free initial consultation/home visit where we provide project-specific guidance and an estimate of fees or why not pop into our office at

The Courtyard, r/o 13 High Street, Clophill

No VAT is payable for design and drawing services on residential projects

We also provide advice & assistance with Insurance Claims, Maintenance & Repair issues and Party Wall Surveying Services



01525 862457 | info@cdmsd.co.uk | www.cdmsd.co.uk

Bring in this advert for a 10% discount on our fees



Coates Dixon & Mitchell
Surveying & Design

For Paws

1-2-1 Dog Training & Behavioural Consultations

PLUS

- Dog walking • Puppy pop-ins • Cat feeding • Pet drop-ins (we do everything from cleaning out hutches to putting your chickens to bed)

For more information go to **www.forpaws.info** or contact **Jo Deeks** Dip Dog Psy IMDT (formerly Stringer) on **07576 854184**





Welcoming children from **2 years** of age

Whether you live in Clophill or further afield, our aim is to help your child to become a confident and secure independent learner who seeks out new experiences and discovers new things, soaking up knowledge through exploration and investigation.

In the setting of Clophill Village Hall we have access to a fantastic outdoor area. We'll be going out in all weathers using the sky as our roof and the earth as our carpet.

clohillpreschool@gmail.com

07732 872685



Why not
come and
see us?



Vehicle Repair and Service Centre

Autoeffects

- Complete colour changes & Resprays
- Dents, scuffs and scratches
- Body styling kits
- Crash repairs
- Servicing at competitive rates
- MOT's arranged
- Window tinting
- Complete retrim and repair
- Fitment of parking sensors
- Free estimates
- Collection and delivery service
- All work guaranteed
- On-site colour mixing
- Insurance work undertaken (courtesy car available for non-fault)
- Private and fleet customers welcome

If you have a digital camera, e-mail us a picture of the damage to your vehicle, and we will call you, don't forget to leave a contact telephone number!

If you are passing, why not pop in and see us!



FREE
Car valet
with every
service booked
& on presentation
of this flyer!

Auto Effects Limited
College Farm, Park Road, Westoning
Bedfordshire MK45 5LA

Tel: 01582 883322 Fax: 01582 883372
Mobile: 07811 443948
Email: sales@autoeffects.co.uk
www.autoeffects.co.uk

All major credit cards accepted

01582 883322

For a free quote
please telephone

SEALAWN BOARDING CATTERY

126 High St, Clophill, Beds, MK45 4BL



Situated around a private lake within 8 acres of Bedfordshire countryside, this stunning and peaceful setting is exclusively for cats

- 🐾 Inspection visits most welcome
- 🐾 Open 7 days a week except Public Holidays
- 🐾 Highest standard of hygiene & cleanliness observed
- 🐾 Heated accommodation with large covered external runs
- 🐾 Shared boarding available to cats from the same household
- 🐾 All ages of cats welcome
- 🐾 Collection and delivery service available

Established for over 30 years, the highly competent team of staff at Sealawn look forward to welcoming your cat for the ultimate care experience whilst you are away from home

Contact us for a full colour brochure

Telephone: **01525 860585**

Email: sealawn@btinternet.com

Visit our website: www.sealawn.com

NO SALESMAN, NO PRESSURE, NO GIMMICKS Windows, Doors & Conservatories At A Sensible Price



- ✓ FASCIAS ✓ SOFFITS ✓ GUTTERS, ALSO
- ✓ ALL COLOURS & FINISHES
- ✓ FREE K GLASS -
MEANING HEAT LOSS REDUCTION
- ✓ INSTALLATIONS RANDOMLY CHECKED BY
INDEPENDENT GOVERNING BODY
- ✓ FREE ESTIMATES
- ✓ FULLY INSURED
- ✓ 10 YEAR INSURANCE BACKED GUARANTEE



Contact: ANDY WOOD

150A CLOPHILL ROAD MAULDEN BEDFORD MK45 2AE

07796 272539 or 01582 536944



AM WINDOWS
CONSERVATORIES
& DOORS



...WE TAKE THE PANE OUT OF GLAZING



The Happy Place.co.uk

On the Green beside the Post Office every Friday
3.30-7.30pm

We are your local mobile fish and chip van, we have been parked on the green every Friday for the past 6 years.

We serve only the highest quality produce, cooked fresh to order and served to you by our friendly staff.

Why don't you pop down and come and
Try Our Fry!

To avoid waiting in the cold, give us a call to
place your order on: 07833 786108

A big thank you to all our customers who have loyally supported us over the past couple of years.

Clophill

Mace

Post Office & Stores

- Fresh bread & dairy produce
- Newspapers & magazines
- Confectionery & tobacco
- Wines, beers & spirits
- Cards & stationery
- Household goods
- Baby products
- Toys & gifts
- Dry cleaning
- Photocopying
- Shoe repairs
- Post office counter services



Shop Hours

Mon - Sat 7.30 - 7.30 | Sun 8.00 - 1.00

Post Office Hours

Mon, Tues, Wed, Fri 9.00 - 1.00, 2.00 - 5.30 | Thu, Sat 9.00 - 1.00

THE GREEN, CLOPHILL 01525 860988

Proprietors:
Deepak & Dakhsa Chandarana

HIGH QUALITY CARPET, UPHOLSTERY & LEATHER CLEANING

Ring Steve
01582 882620

Email: steven@stevenwildman.co.uk

STUART DREW ELECTRICAL SERVICES

MEMBER OF THE ECA
PART P CERTIFIED QUALIFIED TO 17TH EDITION

From extra lights & sockets, to re-wires. Fault finding and electrical safety certification. For a professional, courteous service with free estimates & all work guaranteed, please call me

29 Lincoln Way
Harlington
Beds
LU5 6NG

Fully qualified & insured
30 years experience

Telephone:
01525 875965
07941 812662

Markham Architectural Salvage

www.markhamreclaimed.co.uk

Reclaimed Timber Specialists

Oak Beams – Doors – Flooring – Bricks
Bespoke Furniture – Landscaping Materials
Mirrors – Roofing Materials

Opening Hours: Monday Friday 9am – 5pm Saturday 9am – 1pm

Tel: 01525 876428 or Mobile: 07766 051307

Upper East End Farm, Goswell End Road, Harlington, Bedfordshire, LU5 6NU



GARDEN DOCTOR

Rob McLeod
Pruning Specialist

Professional, Local, Experienced

- * All tree and hedge work undertaken
- * High standard of work
- * Rubbish cleared from site
- * Free Quotations
- * Local, reliable service you can trust

Tel: 07763 239340 or 01525 861568
email: garden.doctor@btinternet.com

Call the Garden Doctor and bring Good Health to your Garden



Tree Surgery & Removal
Shrubs & Fruit Trees
Pruning & Spraying
Fully certificated and insured

SHEFFORD BUILDING SUPPLIES LTD

44 HIGH STREET, SHEFFORD, BEDS

Key Cutting
Tools
Timber
Sheet Materials
Gardening
Paint



Gas
Electrical
Plumbing
Sand & Cement
Domestic
Ironmongery

Tel: 01462 813381
TRULY AN ALADDIN'S CAVE
Free delivery



Daily activities available at the Centre

- **Complementary Therapies** - Massage, Reiki, Osteopathy, Chiropractice, Shiatsu, Counselling, Bowen Technique, Alexander Technique and more...
- **Regular Classes** - Yoga, Meditation, Pilates, exercise classes, Qi Gong, story telling, drumming, photography, Yoga for pregnancy and more
- **Workshops/courses** - Throughout the year we have numerous workshops, courses led by local and internationally known teachers.

3 Venue Rooms & 14 Acres of Land for Event Hire:-

Meetings, Training, Marquee Events, Weddings, Rehearsals & Club events ...

For further information visit www.clophillcentre.co.uk

Contact: Richard & Katarina Diss 01525 862278 info@clophillcentre.co.uk
The Clophill Centre, Shefford Road, Clophill, Beds MK45 4BT



In an uncertain financial world you can be certain of good advice.

We can offer you complete financial advice with a friendly and professional service at your home or our office.

Hills-Howson Financial Services

The Old Post Office
53 High Street
Clophill
Beds MK45 4BE

Tel: 01525 861803
www.hills-howson.co.uk
hills.howson@btconnect.com

Including:-

Investments

Pensions

Protection

Annuities



Poppins Chimneys

**Chimneys Swept
Wood and Multifuel Stove
Installation & Liners**

Great Service - Great Price!



01525 860424 or 07858 688785
mark@poppinschimneys.co.uk

R.G.S. TILING

Bathrooms, Kitchens, Conservatories - Walls & Floors
Specialist in all aspects of ceramic tiling
30 Years experience

Tel: 01525 860849

Mob: 07900 249810

Email: simzie64@hotmail.com



Lady Gardener

Do you need help to keep your garden looking good
all year round.

Would you like to plan and plant a new
or existing border.

For regular maintenance or a one off visit
Please phone Julie on 01525 861864

Sarah from Grooms – Mobile Hairdresser

Would like to welcome all new and existing clients as she goes mobile full time

Group bookings and
senior citizen discount available

Tel 07595 046667

AIMS

Tim Kemp BA FCA
Top Barn Rectory Road
Steppingly MK45 5AT

TEL/FAX : 01525 717141
MOBILE : 07900 823 012
www.aims.co.uk
e-mail: timk@aims.co.uk

- ◆ **Professional** service providing for all your accounting and tax needs
- ◆ **Practical** advice based on 20 years experience in **running** businesses
- ◆ **Personal** approach with fixed fees relevant to the work **you** need
- ◆ **Friendly, local** accountant supporting the community for over 20 years

Please call for a free, no-obligation initial meeting

ACCOUNTANTS FOR *business*

PPM
PROFESSIONAL PEST MANAGEMENT LTD
COVERING ALL PESTS
COUNCIL APPOINTED CONTRACTOR
OPERATING THROUGHOUT BEDS, HERTS & BUCKS
PPM Limited Email: matt@ppmlimited.co.uk
Unit 7a Old Bridge Way, Shefford,
Bedfordshire SG17 5HQ

CALL
01462
811818
OUT OF HOURS
07990 970908 OR
07788 742052

**"AS FEATURED ON ITV IS INFESTED"
AND "THREE COUNTIES RADIO"**

npta NATIONAL PEST TECHNICIAN'S ASSOCIATION



W&H PEACOCK Established 1901

AUCTIONEERS & VALUERS

Auction Every Saturday

Viewing every Friday 8.30am - 8.00pm

Entries for our weekly sales can include:

- Antique & Modern Furniture • Clocks • Books
- Ceramics & Glassware • Pictures & Prints • Bicycles
- Jewellery & Watches • Garage Tools & Equipment
- Household Electrical Items • Timber & Building Materials
- Office Furniture & Equipment • Retail Products & Stock
- Horticultural & Commercial Equipment • Vehicles
- Garden Furniture & Effects • Collectables

COLLECTION SERVICE AVAILABLE



Bedford Auction Centre 26 Newnham Street, Bedford MK40 3JR



01234 266 366 www.peacockauction.co.uk

THE COMPUTER MAN



Got a problem with your computer and don't know what to do? Suffering with a virus or spam?

Don't hesitate! Ring your local computer expert

**Remote repairs or home visits
(Day, evening & weekend)**

**Lap top/desk top loan
(Free pick up & drop off in local area)**

Comprehensive health check from £35 (Special Offer £35 - normally £40)
Refurbished fl at screen available from £15 • Refurbished base units available from £99



Contact Stephen Amos
07976 718567
the.computerman@ntlworld.com



ROGER STOREY

YOUR LOCAL PAINTER AND DECORATOR

Friendly and Reliable Service

Many Years Experience

Please phone: **01525 861253** or **07800 777615**

NEWAYS™
Independent Distributor.

There is a better way

Enjoy additional income
Give your family
a healthier
home.



Take
positive
action now

Phone Andy: 0781 765 1896
www.VibrantLiving.iNeways.eu

CTP CONSTRUCTION

Local Building Company

Established for over 25 years

U.K. Trades Approved

No job too small - Competitive prices

Free estimates given on all Building Work

Tel: Silsoe 01525 860105

www.ctpconstruction.co.uk



Music Tuition

Flute and Music Theory

Susan York MA, BA (Hons), LTCL, MSTAT
Cloughill (01525) 860711



Baths, Toilets &
Showers
Sinks and Taps
Guttering
Leaks and Burst Pipes
Drainage
Handyman jobs also



Silsoe based
No call out fee – free estimates
Fully insured and guaranteed
No job too small
07720 723653 01525 864859
info@betaplumbing.co.uk
www.betaplumbing.co.uk

Foot Health Practitioner

Corns, Hard Skin, Verruca, Fungal Nail Infection,
In-growing Toe Nails, Diabetic Foot Care, Athlete's Foot,
Pedicure, General Nail Cutting etc.

In the comfort of your home or at my clinic

Ann Gibbons MCFHP. MBAFHP.

Competitive Rates

Tel: 01462 813252 Mob: 07872 315763

Web: www.shamrockclinic.co.uk

For opening hours and other details please refer to my website

Silsoe Newsagency

24 High Street, Silsoe, Beds.

Telephone: Silsoe 861522



- NEWSPAPERS & MAGAZINES
- FRESH BREAD & DAIRY PRODUCE
- CONFECTIONARY, TOBACCO
- CARDS & STATIONERY
- WINES, BEERS & SPIRITS
- FRUIT, VEGETABLES & GROCERIES
- HOUSEHOLD GOODS, DRY CLEANING
- CASHPOINT MACHINE, PHOTOCOPYING
- NATIONAL LOTTERY
- PAYPOINT AGENT

HOURS OF OPENING

6.30AM - 9.00PM

8.00AM - 9.00PM

8.00AM - 5.00PM

MONDAY TO FRIDAY

SATURDAY

SUNDAY

All major Credit/Debit Cards accepted

Amphill and Flitwick Physiotherapy Clinic



The very best physiotherapy care from a friendly approachable clinic with ten highly trained Chartered physiotherapists
Daytime, Saturday and evening appointments
We also offer:
Reflexology ~ Pilates ~ Nutrition ~ Homeopathy



7 Station Square - Flitwick - Beds - MK45 1 DP
Telephone: 01525 720882
Fax 01525 720886
www.chartered-physiotherapy.co.uk

E.T. Accountancy Services

Experienced Chartered Accountant and Chartered Tax Adviser based in Clophill providing a full range of accountancy and taxation services to businesses and private individuals.

To arrange a free initial consultation please telephone me on 01525 590465 or email emma@et-accountancy.co.uk

Chartered Accountant and Chartered Tax Adviser

Emma Thoulass FCA CTA www.et-accountancy.co.uk 01525 590465

Chapman & Kirby Heating

Gas, Plumbing & Heating Installations

Gas Safe Registered

Boiler Servicing & Maintenance



Call us now

Tel: 01525 861255 Mob: 07831 132308

Email: info@chapmanandkirbyheating.co.uk

1C, Old Silsoe Road, Clophill, Beds., MK45 4AR

A L & G ABBOTT

Funeral Directors

~ Established 1832 ~

An independent family business which has provided a sympathetic and professional service to our local community for over 170 years.



- 24 Hour Personal Service
- Pre-Paid Funeral Plans
- Private Chapels of Rest
- Floral Tribute Service
- Memorial Showroom
- Civil Services Available

150 Bedford Road, Kempston, MK42 8BH

Telephone: **01234 843222**
(24 hours)

www.abbott-funerals.co.uk



The UK's No.1 Lawn Care Company



- Scarification
- Aeration
- Lawn Fertilising
- Weed Control
- Moss Control
- Water Conserver
- Pest and Disease Management



GreenThumb has a variety of treatment programmes to suit your pocket that include our traditional 'pay-as-you-go' service and our new, pay monthly, Direct Debit programmes, where you can save up to 25% annually.

Our treatments start from £5 per month, that's cheaper than D-I-Y and without the hassle!

Call your local branch today for a FREE lawn analysis and no obligation quote.

0800 0111 222

GreenThumb
LAWN TREATMENT SERVICE



Find us online at: www.greenthumb.co.uk



- Suppliers of traditional and modern equipment
- Working whirlpool & spa baths, power & steam shower systems on display
- Over 40 settings on display
- Complete installation service if required
- Personal friendly service from a family run business
- Wall and floor tiles
- Accessories
- Mirrors
- Bathroom furniture
- Heated towel rails
- Saunas
- Bathroom cabinets

SHEFFORD 01462 627002

www.bathroomvogue.com

Unit 4A, Shefford Industrial Park, St Francis Way, Shefford SG17 5DZ



Woburn Country Foods BUTCHERS & FARM SHOP

Specialists in Bedfordshire Meat



**UNBEATABLE QUALITY
REASONABLY PRICED**



Plus... Fresh Bread, Free Range Eggs, Cheese, Homemade Cakes, Jam, Chutney, Fruit Juices, Cooking Sauces, Plants, Gifts, Cards & More!

Local Fresh Fruit & Veg



LOCAL MEAT FROM LOCAL FARMERS



West End Farm, London Lane,

Haynes West End (Left off A6 towards Bedford)

MK45 3RA Tel: 01234 740300

Open Tues to Sunday

- specialist in alloy wheel repairs
- powder coat primers & lacquers
- colour change service
- friendly reliable personnel
- collection & delivery service
- cracked alloy welding
- fully insured
- diamond cut wheel repairs
- competitive rates

mintalloys

complete alloy wheel refurbishment

Tel: 01525 860069

www.mintalloys.co.uk

Wrest Park, Silsoe, Beds, MK45 4HS

DAMAGED ALLOYS ?

Mint Alloys offer a complete alloy wheel refurbishment service that will make your damaged alloys look like new again.

Please call in to our workshop based at Wrest Park, Silsoe or

call us on

01525 860069

for a quotation

Before



After



We supply and fit tyres at competitive prices



RICHARDSONS OF AMPHILL LTD

ESTABLISHED 1944



Fine Jewellery
Antique Clock Restoration
Gold Buying Centre



The Market House, 6 Church Street, Ampthill, Bedfordshire, MK45 2EH

Telephone: 01525 403474
www.richardsonsofampthill.co.uk

Stephen's Plants

at Maulden Garden Centre on the A507 bypass (near A6 / Clophill)



for your

Seasonal and hardy plants
Vegetable seeds and plants
Hanging baskets and tubs
plus composts and fertilisers
all with EXPERT ADVICE *and a smile*

Telephone: 01525 861696

Conifer Kennels & Cattery

THE CAUSEWAY CLOPHILL

TELEPHONE 01525 860339



The home of
LYRENSTAN

STANDARD LONG HAired DACHSHUNDS

HEATED KENNELS & CAT CHALETs WITH INDIVIDUAL RUNS
INSPECTION WELCOME ANYTIME

Wrest Park Day Nursery, Silsoe

Our beautiful nursery is based within the grounds of Wrest Park in Silsoe. We offer care for 0-5 year olds, 8am to 6pm, Monday to Friday. Our nursery is a spacious, open plan barn conversion which has been carefully & thoughtfully restored offering a large, bright & airy space. There is a designated area for our babies to move freely & safely as well as a quiet area for sleeping.

We offer all day sessions, am or pm sessions or a 9-3 'school day' session. We also accept childcare vouchers and over 3's funding. Please come and view our wonderful nursery and see how dedicated we are to making our setting an inspiring, safe and happy environment for your child.

Please call Anita on 01525 861743 or info@wrestparkdaynursery.co.uk
www.wrestparkdaynursery.co.uk



BURGLAR ALARMS

New Alarms Fitted or Upgrade Existing Alarms

BURGLAR ALARMS

We fit New Alarms - Wired or Wireless Systems
We can service and maintain your existing alarm

CCTV

We fit high quality systems to maximise your security.
Access your CCTV via the internet or mobile.

DOOR ENTRY

We fit a range of quality video and audio intercoms
to suit your needs.

*We are a family run business with over 35 years
experience in home security and crime prevention.*



**Don't
become a
victim..**



www.maximumsecuritysystems.co.uk

Contact:

01582 864138 / 07746 111520

For a free quote and consultation

SIMON BISCOE LANDSCAPES

Decking-Fencing-Raised Vegetable Beds-Turfing-Maintenance-Paving-Planting
Complete Garden Design and Build Service

Tel: 0770 279 1993

email:sblandscapes@live.co.uk

Washing Machines Dishwashers Dryers Repairs Servicing Sales



A local family business offering
a quality service at a competitive price
Est. 1981

Tel: CLOPHILL 860148

or Tim Downing direct on 07969 545 276

A member of the White Goods Trade Association
Fully Insured



BEFORE



& AFTER



MISTY DOUBLE GLAZING ?

KEEP YOUR WINDOW FRAMES....

....WE JUST REPLACE THE GLASS!

- UPVC • Aluminium • Or Wood

Because we replace just the glass the repair is a

FRACTION OF THE COST

of a complete replacement window.

mistydoubleglazing.co.uk

01525 876808

QUALITY GLAZING SERVICES

We also replace Broken...

- Glass • Handles • Hinges
& Locks

**and Repair... Patio Doors &
Conservatories!**

**UPVC
frame
cleaning
service
available**



NEVILLE

FUNERAL SERVICE

Established 1875

“Reassurance when you need it most”

Serving the people of Bedfordshire since 1875

Neville Funeral Service

inc. George Squire & Sons since 1976

24 Clifton Road

Shefford SG17 5AE

t: 01462 813258

e: shefford@nevillefuneralservice.com



Neville Funeral Service

The Old Church Flitwick Road

Amphill MK45 2NT

t: 01525 406132

e: amphill@nevillefuneralservice.com



www.nevillefuneralservice.com

Root 'n Branch

Your Local Friendly & Reliable Gardener

All aspects of Garden Maintenance undertaken
• PRUNING • MOWING • WEEDING • PLANTING • HEDGING

Southfields, Shefford
email: whooley@hotmail.co.uk

Tel: 07771 537385

Public Liability
Insured

ADAM IN YOUR GARDEN

**TREE SURGERY, HEDGE TRIMMING,
TURFING, FENCE MAINTENANCE,
DECKING, PATIO CLEANING**



Qualified, Fully Insured, Competitive Rates
Free Estimates

TEL: 01582 518954 MOB: 07828 490360

Web Site: www.adaminyourgarden.co.uk

ANDREW BAKER WINDOWS

9 SHEFFORD ROAD
CLOPHILL BEDS
MK45 4BT

SPECIALISING IN UPVC WINDOWS,
DOORS, CONSERVATORIES,
FASCIA, SOFFITS, GUTTERS AND
CLADDING. ALSO AVAILABLE FOR CARPENTRY
WORK. NO JOB TOO SMALL OR LARGE.

20 Years experience.
Free local quotes.

FENSA

Fensa Registered
FIVE YEAR GUARANTEE

Contact Andrew: 01525862804 / 07825017855

Email: abakerwindows@gmail.com

Stephens

Professional & Reliable Removal Service

- Household & Office Removals & Storage
- Full Packing Service & Materials
- Containerised Storage
- Experienced, Professional Staff
- Comprehensive Insurance
- Quick & Free Estimates

Luton **01582**
Hitchin
Stevenage **572967**

VISA Maestro MasterCard



Mem No S052

www.stephensremovals.com

Local, National & International Removals & Storage

Stephens Removals are also a franchise of the Bishops Moves Group.

AAAAA STEPHENS REMOVALS LTD

McCaffrey

Your central resource for residential
build, refurbishment and maintenance



General Building Works
Extensions
Internal Refurbishment/Alterations
Garage Conversions
Loft Conversions

Brickwork
Carpentry
Painting & Decorating
Purpose made Joinery
Bi - Folding Door Applications

Plumbing and Heating
Electrical installations
UPVC/Timber Windows
UPVC Conservatories

T. 01525 861041
E. info@mccaffreybuild.co.uk
W. www.mccaffreybuild.co.uk



WEC, BUILDING 52, WREST PARK,
SILSOE, BEDFORDSHIRE, MK45 4HS

COMPANY NUMBER: 7240869

MCCAFFREY BUILDING CONTRACTORS LTD



OSTEOPATHY

Deborah Pedley BSc (Hons) Ost.
Registered Osteopath

**The Clophill Centre for
Complementary Therapy**
Clophill Fruit Farm,
Shefford Road
Clophill

- Cranial & Structural Osteopathy
- Neck & Low Back Pain
- Infant Feeding & Sleeping Problems
- Muscle Tension
- Sports Injuries
- Arthritic aches & pains
- Headaches

To book appointments call: **07969 921112**

GARDEN SERVICES FOR MID BEDS



**Grass Cutting, Hedge Trimming,
Shrub Pruning, Mole Control
and General Maintenance**
Local and Reliable Service

**Ring John on 01525 874690
or Mobile 07710 452436**
John Abraham your local gardener



MB

ACCOUNTING SERVICES

accounting solutions for the

Self-Employed and ***Small Business***

including

Bookkeeping • Accounts • Tax returns • Cash flows

For a totally confidential service at **very competitive rates** contact
Richard Fairholm T: 01525 861087 M: 07714189994 E: mbaccounts@btinternet.com



rincon tuition – Spanish & Maths

Expand your knowledge. Boost your confidence

01525 860743

Exam techniques and preparation, revision and practice papers.

Spanish for business or pleasure, all levels. Skills development.

Maths all levels: KS1, KS2, KS3; SATs and GCSE practice papers

CRB certified & references – Reasonable rates

01525 860743 - 07952 667814

rincontuition@aol.com

Hire Clophill Village Hall



Wedding Receptions

Birthdays & Special Occasions

Dances and Discos

Club & Community Meetings & Activities

Phone: 07821 643 936

Mail: Clophill.villagehall@gmail.com Web: www.clophillvillagehall.co.uk



**SPECIALISTS IN KITCHEN
& BATHROOM FITTING**

FLOOR & WALL TILING

FREE DESIGN, ADVICE &

NO OBLIGATION QUOTES

“Our success is your satisfaction”

Tel: Darren – 01234 307753 Mob: 07866 699822

e-mail: darrenmeyern@googlemail.com

Advertisers index

Architectural Services		Funeral Services		Pest Control	
Coates Dixon & Mitchell	32	AL&G Abbott, Funeral Directors	45	PPM Limited	40
		Neville Funeral Service	51		
Auctioneers & Valuers		Garden Services		Pet Services	
W&H Peacock	41	Adam in your Garden	52	Conifer Kennels & Cattery	48
		Garden Doctor	37	For Paws (Dog Training)	32
Bathroom Services		Garden Services for Mid Beds	54	Sealawn Boarding Cattery	34
Bathroom Vogue	46	Green Thumb Lawn Treatment	46		
		Lady Gardener	39	Plumbing & Drainage Services	
Builders & Carpenters		Michael Martin Tree Services	28	Beta Plumbing	43
CTP Construction	42	Root 'n Branch	52	Chapman & Kirby Heating	44
McCaffrey Build	53	Simon Biscoe Landscapes	50	Drain Doctor	BC
Peter Sharpe Building Services	30	Stephen's Plants	48		
Stuart Benson Building Projects	IFC			Post Offices	
				Mace Post Office & Stores	35
Building Supplies		Health & Beauty			
Shefford Building Supplies Ltd	37	Amphill & Flitwick Physiotherapy	44	Print Services	
		Deborah Pedley Osteopathy	54	Amphill Print Centre	IFC
Carpet Services		Mobile Hairdresser	31		
Carpet & Upholstery Cleaning	36	Molly Coddle	31	Public Houses	
		Neways Independent Distributor	42	The Stone Jug	29
Car Services/Repairs		Sarah from Grooms - Mobile hairdressing	39		
A&F Motors Ltd	IFC	Shamrock Clinic - Foot Health	43	Removals & Storage	
Auto Effects Ltd	33	The Clophill Centre	38	Stephens	53
Mint Alloys	46	The Tanning Salon	IBC		
TC Coomber Car Services	BC			Repair Services	
				Tim Downing Repair Services	50
Chimney Sweep		Home Improvements			
Poppins Chimney Sweep	39	Dome Interiors	55	Security Services	
		Markham Architectural Salvage	36	Maximum Security Systems	49
Cleaning Services		RGS Tiling	39		
Merry Maids	IBC	Roger Storey - Painter & Decorator	42	Take-aways	
				The Happy Plaice	35
Computer Services		Jewellers			
Compu-Doc	29	Richardsons of Amphill Ltd	48	Tuition Services	
The Computer Man	41			Rincon Tuition (Spanish & Maths)	55
		Music Lessons			
Electrical Services		Susan York Music Tuition	42	Village Hall	
Stuart Drew Electrical Services	36			Clophill Village Hall	55
		Newsagents			
Financial Services		Silsoe Newsagency	43	Windows/Replacement	
AIMS Accountants	40			Andrew Baker Windows	52
ET Accountancy Services	44	Nursery Schools		AW Windows	34
Hills-Howson Financial Services	38	Clophill PreSchool	33	Misty Double Glazing	50
MB Accounting Services	54	Clophill St Mary's C of E			
		Lower School and Nursery	31		
Food Suppliers		Clophill Toddler Group	29		
Woburn Country Foods	47	Wrest Park Day Nursery - Silsoe	49		

IFC = Inside Front Cover

IBC = Inside Back Cover

BC = Back Cover

Spotlight is now taking **quarter-page** black and white ads

Email ads@clophillspotlight.co.uk for details

Ads from as little as **£50** per year

For further information about advertising in Spotlight,
please contact our Advertising Manager at ads@clophillspotlight.co.uk

The Tanning Station & Pebbles Beauty

- Sunbeds
- Massage
- Eyelash Extensions
- Bio Sculpture
- Pedicure
- Spray Tans
- Footcare Specialist
- LVL
- Facials
- HD Brows
- LCN Nail Extensions
- Manicure
- Hot Stone massage
- Waxing
- Jessica GELeration
- Threading



2 Steppingley Road, Flitwick, Bedfordshire MK45 1AJ
01525 720 095 www.tanningstation.co.uk

Opening Times

Monday - Tuesday	09.00 - 19.00
Wednesday - Thursday	09.00 - 21.00
Friday	09.00 - 19.00
Saturday	10.00 - 16.00
Sundays & Bank Holidays	CLOSED

merry maids

Relax. It's Done.®



Come home to a job well done.



Whatever your idea is of time well spent, we're pretty sure it doesn't include dusting, vacuuming or scrubbing floors. That's our job. Merry Maids home cleaning services gives you back the time you want to concentrate on the things that you enjoy.



- Domestic cleaning service for your home
- Customised to meet your needs
- Regular or one off cleans
- Trained & uniformed teams
- Full insurance
- Satisfaction guaranteed

Call Merry Maids on **01525 860957**
for a free no obligation quote.
bedford@merrymaids.org.uk

merry maids.co.uk



DrainDoctor®

PLUMBING & DRAINAGE

24 Hours a day... 7 Days a week... 365 Days a year

Your Local Expert Plumbing & Drainage Service

**BEDFORD
& KEMPSTON**

01234 742 900

**LEIGHTON
BUZZARD**

01525 779 818



**BLETCHLEY &
MILTON KEYNES**

01908 849 814

**SANDY &
BIGGLESWADE**

01767 662 040

**FLITWICK
& AMPHILL**

01525 779 818

- All Emergency Plumbing
- All Drainage & Blockages
- No Call Out Charge
- Pre-fixed Prices
- Work Guaranteed

FREEPHONE ALL AREAS

0800 019 2416

T.C. COOMBER



**MOT'S CLASS 4/7
SERVICING & REPAIRS
CAR & COMMERCIAL
TYRES & EXHAUSTS
AIR CONDITIONING
DIAGNOSTIC CODE READING**

**Collection
& Delivery**
SERVICE AVAILABLE
Please ask

AMPTHILL
01525 406330

UNIT F, AMPTHILL INDUSTRIAL ESTATE, STATION RD, AMPTHILL, MK45 2QY