

Vol 39 | No.7

FREE

CLOPHILL SPOTLIGHT

SEPTEMBER 2017



**LOVE YOUR
LOCAL NEWS**

AMPTHILL PRINT CENTRE

**DIGITAL PRINTING
DESIGN & MARKETING
DIRECT MAIL**

and much more...

...and we're right on your doorstep at

Unit 24 Station Road Ind Est, Ampthill, MK45 2QY
(Just off the A507 Ampthill bypass, past the Post Office)

WE PRINT...

- Stationery
- Newsletters
- Menus & Tent cards
- Brochures
- Flyers & Leaflets
- Catalogues
- Books & Booklets
- Direct mail
- Training Manuals
- Banners & Posters
- Greeting cards
- Calendars
- Labels & Stickers
- NCR pads
- Folders
- Exhibition panels
- CD/DVD duplication
- Photocopying

3 DAY STANDARD SERVICE | SAME DAY AVAILABLE

www.fidelityprint.co.uk

Get a quote 01525 300001 quotes@fidelityprint.co.uk

fidelity

Unit 24 Station Rd Ind Est, Ampthill



MOTORS LTD

Tel: (01525) 860292

Tel: (01525) 404919

208 Clophill Road, Maulden, Bedfordshire MK45 2AF
89 Oliver Street, Ampthill, Bedfordshire MK45 2SA

**CAR AND COMMERCIAL VEHICLES
ALSO CLASSIC & AMERICAN CARS
SERVICING – REPAIRS – BREAKDOWN
SPRAYING – M.O.T.**



Stuart Benson Building Projects

**Design, Build and Maintenance including Interior Refurbishments,
Kitchen / Bathroom fitting, Tiling, Flooring, Skirting boards, Doors
Garage conversions, Exterior Decking, Patios, Driveways
Garden Offices/ Sheds**

Tel: 07946 579862 or 01525 403083

Email: benson.stuart@.googlemail.com

“

A word from the Editor...

Hello again!

Well that summer break went quickly, didn't it? Still, we're back now, and raring to go with a lovely mix of village news and events for you.

Of course THE event for September is the **Scarecrow Festival**. If you haven't taken part before why not give it a go? All you need is a theme or a character, some old clothes and a load of stuffing (cushions, newspapers etc) and you're done!

The first scarecrow I made had my neighbours in fits of laughter (let's just say one leg was considerably longer than the other!) but that's the thing about scarecrow-making ...it's a bit of fun! Tempted?
Go on – you know you want to!

See you again in October



”

The magazine staff

EDITOR/ADVERTISING
MANAGER

Helen Gent
editorial@clophillspotlight.co.uk
ads@clophillspotlight.co.uk

864836

DESIGN MANAGER

Chris Abrahams
cmabrahams@yahoo.co.uk

DISTRIBUTION MANAGER

Pete Liddle

860113

TREASURER

Richard Pearson

861110

COPY DEADLINE

20th of the month

You can also read Spotlight online
www.clophillspotlight.co.uk



Dust down your dancing gear!

We'd love you to join us for the

"STAYIN' ALIVE" DISCO

to raise funds for the East Anglian Air Ambulance

(who recently provided amazing medical care to our friend after she suffered a traumatic accident)

Saturday 30th September, 7.30pm to 11.30pm

at Clophill Village Hall, Kiln Lane, Clophill MK45 4DA



Tickets £12.50 in advance – includes buffet & bar facility

Available from Wendy Austin on 07934 473702

With your support, the EAAA can continue to help save lives. Each mission costs on average £3,500.
EAAA receives no direct government funding

CLOPHILL METHODIST CHURCH COFFEE & CROISSANT MORNINGS

ALL PROCEEDS IN AID OF CLOPHILL METHODIST CHURCH

10AM TO NOON

£1.50

Saturday 7th October Saturday 11th November

ALL WELCOME



Clophill youngster takes on the Channel for charity

While swimming a few lengths of the local pool might be all some people can manage, 13-year-old Isaac Moon, from Clophill, recently swam part of the English Channel.



Isaac was part of a team of seven, ranging in age from 12 to 37, who took on a relay challenge with Flitwick Dolphins Swimming Club. In July, he swam two one-hour sections of the Channel from Dover to Cap de Gris Nez in France, with the team completing the challenge in 12 hours 4 minutes. To count as a ratified swim, the team had to observe strict rules – wet suits aren't allowed so they wore a swim suit, cap and goggles, and each swimmer had to swim their exact hour in a specific order.

'I really enjoyed the swim,' says Isaac, who has started at Samuel Whitbread Academy this term. 'The most challenging bit was finishing on the rocks in France as we had to clamber out and stand behind the water line which was very rocky.' Before the challenge, Isaac trained at least five times a week in the pool and swam in the sea at Dover most weekends in the month leading up to it. 'I had to do a two-hour qualifier swim in a water temperature of 16 degrees or below. It was 15.2C when I did my qualifier – it took a lot of training to get used to the cold water, salt water and jellyfish.'

The swimming team has currently raised over **£12,000** for charities including Great Ormond Street Hospital,

MIND, World Vision, Save the Children, Vasculitis, National Autistic Society and Isaac's chosen charity, Guide Dogs for the Blind. Isaac raised money through online sponsorship and from support from his then school, Robert Bloomfield Academy in Shefford, who arranged an ice cream sale which all the children, staff and parents supported.

'I'm proud of my achievement and the money raised – and I'd like to raise even more for our charities,' says Isaac. 'I'm now looking for my next challenge with the team!'

- If you'd like to donate, go to www.virginmoneygiving.com and search for Flitwick Dolphins Channel relay



The team and their coach in France

Rotary Club of Barton le Clay's famous

GastroQuiz



The quiz that tickles your tastebuds

Silsoe Village Hall

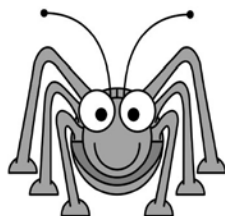
Saturday 11th November – 7pm prompt

Tickets £12 per head, to include supper. Bring your own drinks, glasses etc.

Contact 07914 818017 or 07951 720103 for tickets

Proceeds in aid of charities:
SSAFA Forces Help, Cancer Hair Care and others

**CLOPHILL
METHODIST
CHURCH**



BEETLE DRIVE

Saturday 11th November, 6.30pm

Adults £5, children £2.50

Refreshments

In aid of Clophill Methodist Church

Tel: 01525 860695





The theme for this Rotary year is **'Making a Difference'**. At his address to the Barton-le-Clay club in July, new president Colin Dowding, who has been a Silsoe resident for many years, summarised the activities and achievements from the previous year under the Presidency of Dr Simon Wilden. He told members that 'the achievements were quite remarkable and for a small club of just 23 members it punches well above its weight'.

Colin went on to describe the wide range of charities and organisations that the club has supported throughout the year, ranging from the provision of manpower to direct funding and cooperation to grants for joint funding. The total funding delivered to charities last year was over £7,000 and the Club **made a difference** to a total of 18 organisations, including Cancer Hair Care, East Anglian Air Ambulance, Autism Bedford and Silsoe Stride.

It's for these reasons the club organises fund-raising activities like the Gastro Quiz in Silsoe in November. These allow the club to support such worthwhile charities and really make a difference.

- To find out more about the club contact Paul Biscoe on 861894 or paulbiscoe@hotmail.com. For info on the club's activities, go to www.bartonleclayrotary.org.uk

It's time for Clophill's Scarecrow Festival!

23rd & 24th September

We'd like as many as possible individuals, neighbourhoods and organisations to be involved in this popular event.

Making a scarecrow is fun and can really be quite simple. All you need is some old tights or clothes filled with straw, a head... then dress your scarecrow up to suit your chosen theme. Standing, sitting, climbing, lying down – you decide the pose.

You'll need to place your scarecrow where everyone can see it, such as outside your house, on the Green and at entrances to cul-de-sacs. There's plenty of room in the Church grounds for large exhibits.

During the weekend, programmes with a list of entries and a location map will be sold at various sites around the village. Refreshments will be served in St Mary's Church. The public will vote for their favourite character in each category, with prizes awarded and presented at 4pm on Sunday 24th in the Church. All profits go towards maintaining the Church for the community.

Entry forms available from the Post Office and Church Porch or contact Carolyn 01462 815433 or Julie 01525 860497



Christine's quick 'n' easy recipe



Exotic Cheesecake

INGREDIENTS

- 100g unsalted butter
- 300g cream cheese
- 3 tsp gelatine powder
- 2 limes
- 4 tbsp orange liqueur (Cointreau)
- 2 large ripe mangoes
- 120g fresh breadcrumbs
- 80g caster sugar
- 50g icing sugar
- 200ml double cream

1. Gently melt the butter and add to the breadcrumbs, orange liqueur and icing sugar.
2. Line a 20cm hinged cake tin with baking parchment. Add in the breadcrumb mixture and press down well with your finger tips. Chill in the fridge for 1 hour.
3. Blend together the cream cheese and caster sugar and add in the zest and juice of 1 lime.
4. Put 6 tsp of water into a small saucepan and gently melt the gelatine. When completely dissolved, add to the cream cheese mixture.
5. Whip the cream to soft peaks.
6. Peel one of the mangoes and cut the flesh into small cubes then add to the whipped cream and blend this into the cream cheese mixture.
7. Pour the mixture over the top of the breadcrumbs, making sure that it's levelled off.
8. Place in the fridge for 3-4 hours.
9. Remove the cheesecake from the mould and decorate with thin slices of the second mango and the zest of the second lime.



Bedfordshire
Cambridgeshire
Northamptonshire

Wildlife walks & talks



Small Mammal Trapping and identification

Saturday 16th September, 8.30am-12pm, Flitwick Moor

Richard Lawrence and Colin Carpenter will be setting out the traps on Flitwick Moor late Friday, ready for Saturday morning's exciting discovery. Yellow-necked mouse, bank vole, common shrew – come and discover what's hidden inside the traps. £2 per adult

Places are limited – please reserve your place

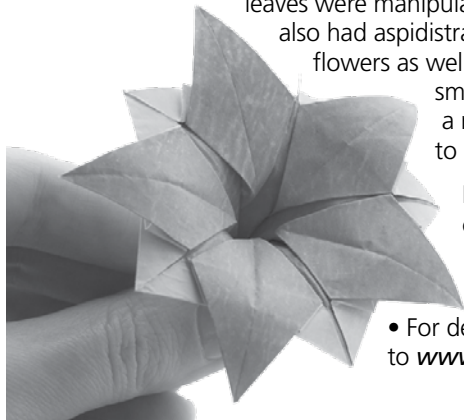
For additional information and to reserve places email flitvale.info@gmail.com or ring Ann on 07890 347327 after 6pm or at weekends

Clophill & District Flower Club



Our July meeting was advertised as 'a fun, social and practical evening where we can all enjoy A Feast of Foliage' and the members and visitors who came along certainly enjoyed an evening with a difference!

As the title suggests there were very few flowers but members created lovely arrangements using only foliage, mainly from their own gardens. Spheres of floral foam were covered with attractive leaves to make very unusual decorations, while phormium leaves were manipulated and woven into amazing shapes. We also had aspidistra leaves twisted to form containers for a few flowers as well as unusual origami flowers fashioned out of small paper squares. We're very fortunate to have a number of members who have the knowledge to demonstrate such difficult skills.



Despite the activities requiring great concentration and very nimble fingers there was much socialising and laughter during the evening.

• For details of our club activities go to www.clophillflowerclub.com



Please enter

St Mary's Church, Clophill

Village Scarecrow Festival

23rd & 24th September 2017

Saturday 10am - 4pm Sunday noon - 4pm

Lunches and teas in St Mary's Church

Programmes with voting forms and maps available from the Post Office,
The Green, Methodist Church and St Mary's Church £4

An event for all the community

Entry forms available from: the Post Office & Church Porch
or contact Carolyn 01462 815433 or Julie 01525 860497





On the 3rd Tuesday of every month Flittabus runs a scheduled service to **Milton Keynes** with pick-ups in **Clophill**.

Enjoy three hours to explore at your leisure the many shops, market stalls and cafes that the centre has to offer. Our volunteer drivers will then pick you up outside John Lewis and drive you and your shopping as close to your home as we can.

Anyone can use Flittabus and we accept concessionary passes

FL3 Haynes - Clophill - Maulden - Amphill - Milton Keynes
Flittabus

Third Tuesday of the month only

Haynes, Foresters Close	0850	Central Milton Keynes, John Lewis	1300
Haynes, Church End, Applewood	0853	Amphill, Wagstaff Way	RR
Clophill, St Mary's Church, Gt Lane	0859	Amphill, Flitwick Road, Grange Rd	RR
Clophill, Green	0901	Amphill, Glebe Road, Fallowfield	RR
Maulden, Opp Lower School	0908	Amphill, Russell Drive, Shops	RR
Maulden, White Hart	0910	Amphill, Oliver St., Health Centre	RR
Maulden, Former Black Horse	0911	Amphill, Dunstable St., The Albion	RR
Amphill, Church Street	0915	Amphill, Church Street	RR
Amphill, Dunstable St., Bakery	0917	Maulden, Opp Former Black Horse	RR
Amphill, Oliver St., Health Centre	0918	Maulden, Opp White Hart	RR
Amphill, Russell Drive, Shops	0920	Maulden, Lower School	RR
Amphill, Glebe Road, Fallowfield	0921	Clophill, Green	RR
Amphill, Flitwick Road, Grange Rd	0923	Clophill, St Mary's Church, Great Lane	RR
Amphill, Wagstaff Way	0926	Haynes, Church End, Opp Applewood	RR
Central Milton Keynes, The Point	0953	Haynes, Opp Foresters Close	RR

Notes: RR Bus calls to set down on Riders Request only

Helpline number 07960 388 111

Flittabus Community Transport is a not for profit organization run and driven by volunteers

News from Clophill Heritage Trust



The last two in our Guided Walk series took place in July and August and focused on edible plants and geology. We've had a fantastic turnout for all of our walks this year and we plan to hold more next year. Last month, as well as hosting a special celebration we also had several large groups of visitors, who hired the whole site for a spiritual retreat – a first for us, it was a great success and we look forward to seeing them again.

During the autumn a lot of site work around the lodges and church yard is planned, with extensive work being done to the hedge around the church. We'll put signs out when work is underway, but if walking yourself or a four-legged friend please do keep an eye out for machinery.

Our Assistant Warden, Emily, has now left on maternity leave and will be back at the end of January. Taking her place until then is Adam Gregory, who you'll see around the lodges.

We're always in need of volunteers to help with weekend Tower Tours, activity days or general site work. If you can commit a couple of hours a month please do get in touch – no experience or skills necessary, just enthusiasm! Contact Kayleigh Waight 07889 980872, Ali Bradbury 07894 710001 or call the lodge phone 07935 911207. You can also email info@clophillheritage.org

Coming soon...

Kids Craft Day, 24th October 9am-3pm £24 per child (ages 8 to 14)

A variety of crafts and activities will be available during the day including broomstick making, witches hat creation, spider-spinning and more. All arts and crafts materials will be provided and children can take home what they make.

Macbeth Performance at the Old Church, 27th & 28th October, 6pm start £7 per person (ages 13 and over only)

The English Gardner Theatre Company will be performing their stunning version of Macbeth in the Old Church. All performances sold out last year so book tickets early – this will be a very different show to last year, so don't miss it!

Pumpkin Festival, 28th October 12-4pm

Our annual Pumpkin Festival will return compete with Hemlock Morris, BBQ, bar, bands, talls and more – free entry. Buy a locally grown pumpkin (that we've scooped out for you so no messy bit!) and carve it to take home ready for Halloween. Reserve pumpkins online to avoid disappointment (we sold out last year!).

Pumpkin Carving Cafe, 29th October 2-4pm

Our normal monthly café but with pumpkins available to carve – book online to avoid disappointment.

To book an event online, go to <http://clophillecolodges.org.uk/events>
or for a Tower Tour <http://clophillecolodges.org.uk/book-a-tower-tour>

The Bedfordshire Regiment in The Great War

Monday 2nd October

Speaker: Steve Fuller, author and researcher of the Bedfordshire Regiment in the Great War and trustee of the Beds and Herts Regiment Museum in Luton

With a history dating back to 1688, the Bedfordshire Regiment already had a long and faithful service to the crown behind it when the Great War broke out in 1914. Battalions from the regiment were engaged in every battle from Mons to the armistice and served in every sector of the Western Front in addition to Gallipoli, Egypt, Palestine, Italy, India and Burma. Steve will summarise the regiment's service during the war, using some of the numerous personal tales, unusual events and imagery he has come across during his research, while building some of the local connections into the story.

LIDAR – Illuminating the Past

Monday 6th November

Speaker: Andy McGrandle, director of Big Anomaly. With almost 40 years processing gravity and magnetic data for the oil industry, he's applied his experience to LIDAR data, bringing previously unseen history to life with new technology

Traditionally defined by teams of Ordnance Survey surveyors, the UK topography is now defined in great detail by a countrywide program of LIDAR laser scanning. Andy will talk about how this new data is acquired and what it can show us with reference to a small

Buckinghamshire village, where this modern high-resolution data is being used to illuminate long- forgotten features seen on maps of the area from the late 1700s.

Visitors are very welcome. Venue: **Lecture Theatre, Flitwick Library**, 7.30pm for 7.45 pm. £2 for members and £3 for visitors is payable on the door

For further details contact Clive Makin at clive.makin@ntlworld.com or call 01582 655785, www.adalhs.org.uk

Ampthill & District Archaeological & Local History Society



CLOPHILL METHODIST CHURCH + ST MARY'S CHURCH

INVITE YOU TO OUR COFFEE MORNING

FOR MACMILLAN CANCER SUPPORT



PLEASE COME AND JOIN US ON

WEDNESDAY 27TH SEPTEMBER
CLOPHILL METHODIST CHURCH

10:30AM TO NOON

Clophill Preschool News



Hi all – we hope you’ve all seen some sunshine this summer. It was a tearful end to our fourth year at Clophill Preschool as we said goodbye to our children leaving for reception class. We wish them a fantastic time in their new schools and we’re sure they will flourish, as they have with us. We’ve asked all parents to keep us up to date with how they get on and to send us photos of them in their new school uniform.

As we look forward to the start of our new academic year our **Learning Shelter** is progressing well. We’ve got lots of great ideas for our natural resource activities, from pinecone construction to stone registration (don’t worry if that doesn’t make any sense... we’ll post photos next issue!). We’ve just planted some pumpkins ready to explore at Halloween and when we celebrate harvest festival we’ll be going out to weed and take in the last of our harvest.

We’d like to welcome our new children and their families to preschool this term, some of whom are siblings of our leavers.



It’s so lovely to see those children we’ve seen as bumps then babies now coming to us.

We’re continuing to hold our **Messy Play** session on the first Friday of the month for Clophill Toddlers and we look forward to meeting the next generation through their doors. We were delighted that at our last coffee morning a group of our parents were keen to start a parent

group for preschool. They’ll help us with fundraising, keeping the allotment tidy and hopefully coming in to share their experiences and ideas with us. We couldn’t ask for better parents – from when we first started in 2013 they’ve always been very engaging and supportive in all we do.

The artworks that the children created with Paul are being reproduced in print and hopefully will be displayed in local points of interest such as libraries, children’s centres and Central Beds Council offices. We’ll let you know their exact locations so you can pop in and see them. We’re busy building our scarecrow for the village festival – obviously we can’t tell you what it is but we’re pretty sure you won’t be able to miss it! Good luck to everyone taking part this year.



- Contact Imogen on **07765 887868** or Chris on **07936 006381** or email clohillpreschool@gmail.com. Our website is www.clohillpreschool.co.uk

These notes are a resume only. Official minutes are available on the internet and notice boards. All official correspondence should be sent to the parish clerk and not individual councillors.

It's been an unusual summer break, with cooler temperatures and wetter weather than usual! We hope you've enjoyed it regardless. Over the summer one of the council's main focuses has been on how we respond to Central Bedfordshire Council's '**Draft Local Plan**'. The Local Plan sets out how Central Bedfordshire will develop over the next 20 years. It outlines the strategy for ensuring that the growth we need is delivered in the right place, and is of the right character and quality. It also ensures that growth is delivered with the supporting roads, schools and services such as health, as well as retail, leisure and community facilities. We held a Draft Local Plan drop-in session on 8th August – thanks to everyone who came along. It's incredibly helpful to hear from villagers directly on issues that will affect us all. Although the deadline for initial feedback has passed, the plan's website can be viewed at www.centralbedfordshire.gov.uk/localplan

Our **recreation ground** area has undergone serious improvement over the past few months with new play equipment, benches and improvements to the skate ramps, plus a new gate and entrance. We specifically thank Cllr Hodge for her hard work in this area. However, we're sad to say that the new slide, which had been fenced off whilst the turf around it settled, has already been vandalised. Obviously we're incredibly disappointed about this, as are parents and children across the village. If anyone sees this sort of **anti-social behaviour** happening, you can contact the local police on 101. You can also contact Crimestoppers to report a crime anonymously on 0800 555 111.

An **Automated External Defibrillator** is being fitted at Clophill Village Hall. An AED is an emergency life-saving device for use in the event of sudden cardiac arrest. The portable appliance analyses the heart rhythm and, if needed, administers an electrical charge to establish a regular heartbeat in the event of a cardiac arrest. Let's hope it doesn't need to be used, but we think this is an important addition for a popular area in our village.

There is still a **vacancy at Clophill Parish Council**. The unpaid role involves attending meetings once a month and spending an hour or so a week reviewing and responding to information. Training will be given. For more details and a brief application form please contact James Stirling, clerk to the council, at clerk@clophill-pc.gov.uk or by post at 31 Plum Tree Road, Lower Stondon SG16 6NE.

- You can read the full minutes of CPC meetings at www.clophill-pc.gov.uk

Planning

CB/17/03228/OUT

Location	Land west of Jacques Lane
Proposal	Erection of eight dwellings and formation of vehicular and pedestrian access with associated landscaping. We feel the applicant hasn't demonstrated that the economic and social benefits arising from the application will significantly and demonstrably outweigh any adverse environmental impacts.

OBJECT

Clophill Parish Council

Continued

CB/17/03319/FULL

Location April Cottage, 24 The Slade
Proposal Demolition of existing building and erection of new dwelling with new vehicular access. We're concerned that this development will impact the character and street scene. The development is likely to be overbearing and not in keeping with the single-storey cottages of the area. **OBJECT**

CB/17/01623/OUT

Location Sealawn Boarding Cattery, High Street
Proposal Updated updated access plans. The changes proposed make little or no difference to our original objection. **OBJECT**

CB/17/03502/ADV

Location The Conifers, The Causeway
Proposal Advertisements: 3 x 2,440mm x 1,220mm printed hoarding boards. Each has a different advertisement explaining services provided and location (retrospective). Our concern would be if the number or size of signs changes. **SUPPORT**

The next Parish Council meeting will take place at the Village Hall
at 7.45pm on Tuesday 12th September 2017

Parish Registers for September

1817

Baptisms

Sept 13 Sarah Anne Sharpe
24 William John Chapman

Marriages

Sept 16 John Good to Ann Reid

Burials

Sept 6 Leslie Conquest
Sept 9 Sarah Partin (?)
Sept 22 Thomas Evans
Sept 25 William Everet

1867

Baptisms

Sept 1 Elizabeth Bushby
Sarah Jane Garner
Harry Huckle, Maulden

Marriages

Sept 1 Samuel Hall, 21, to
Mary Manton, 18

1867 continued

Burials

Sept 25 Ann Stones (?) 69
Sept 31 (sic) Mary Coburn, 53

1917

Baptisms

Sept 2 Irene Florence Stimson
Sept 23 Raymond Charles Cole

Burials

Sept 5 Charles Shapter (?) Maypec(?),
Luton, 73

1967

Baptisms

Sept 26 Paul Vernon Sullens

Walk and Remember

**Sunday 24th
September 2017
from 10.30am
Millennium Country
Park, Marston
Moretaine**

Get together with family & friends and dedicate your walk to a loved one and honour and celebrate their life

Add your own message to the "Bridge of Memories" in the sensory garden

Bring a picnic or visit the Lakeside Café for lunch

Enjoy a 5 or 2.5 mile walk on surfaced paths

This is a fundraising event for
Cruse Bereavement Care
Bedfordshire
www.crusebedfordshire.org.uk



 **Cruse
Bereavement
Care**

*We'll send
you everything you
need to enjoy your
walk and to raise
money for our
vital work*

Registered Charity No. 208078

Sign up now: www.walkandremember.eventbrite.co.uk

What's on in and around Clophill

SEPTEMBER



Sunday 10th
Warden Abbey Open Day & Wine Sale 11am-4pm. *See this issue for full details.*



Saturday 23rd
Scarecrow Festival 10am-4pm, Clophill. *See this issue for full details.*



Sunday 24th
Scarecrow Festival Noon-4pm, Clophill. *See this issue for full details.*



Sunday 24th
Walk and Remember Millennium Country Park, Marston Moretaine, from 10.30am.
See this issue for full details.

OCT



Friday 6th
Jumble Sale 7pm, Clophill Village Hall.

NOV



Saturday 11th
Beetle Drive 6.30pm, Clophill Methodist Church. *See this issue for ticket prices.*



Saturday 11th
Gastro Quiz 7pm, Silsoe Village Hall. *See this issue for ticket information.*

On throughout the month...

Wednesdays...

- **Tea and Coffee Morning** at the Methodist Church, 10.30am-noon

Fridays...

- **Clophill Toddler Group** Clophill Village Hall, 10am-noon. See 'Village Groups' for contact details

One Saturday a month...

- **Messy Church** 4pm-6pm, Clophill Methodist Church. Dates: 23 Sep; 14 Oct; 18 Nov; 16 Dec. All-age craft activities, worship and a meal for all the family. No fixed charge, donations welcome, children must be accompanied by an adult. See 'Village Groups' for contact details.

CHURCH SERVICES

Regular services at St Mary's Church, Clophill

1st Sunday	8am, Holy Communion; 10.45am, Family Praise
2nd & 4th Sundays	10.45am, Parish Communion
3rd Sunday	10.45am, Morning Prayer/Praise
5th Sunday	10am, Benefice Services

Regular services at Clophill Methodist Church

1st, 2nd, 4th, 5th Sundays	10.30am Morning Service
3rd Sunday	10.30am All Age Worship Service

If you have any diary dates that you would like included on this page, please email clophillspotlight1@hotmail.co.uk

JUMBLE SALE

Friday 6th October, Clophill Village Hall

Doors open at 7pm. Entry costs: 30p per adult, accompanied children, free.
Refreshments available.

All profits are donated for the direct benefit of the residents at the
Leonard Cheshire DisABILITY Home in Amptill.

Got any good-quality jumble for us or free to help at the event?

Please call 01525 861110

Useful numbers

Gas (Emergency)		0800 111999
Electricity (Emergency)		0800 7838838
Emergency Fire/Police/Ambulance		999
Water/Sewage (Anglian Water)		0845 7145145
Telephone	(Customer Services) 150 (Faults)	151
Highways Department (Central Bedfordshire Council)		0300 3008049
Benefits Agency (Bedford office)		01234 361500
Registrar's Office (Births/deaths/marriages)		0300 3008089
Rail (Enquiries)		0845 7484950
Buses 01234 262151	(Link A Ride) 01525 840511 (Flittabus)	01582 406561
Luton Airport		01582 405100
Swimming	(Flitwick) 01525 717744 (Robinson Pool)	01234 212479

LOCAL GOVERNMENT

Central Beds Offices (Chicksands)		0300 300 8000
Mid-Beds MP	Nadine Dorries	01462 811992
Central Bedfordshire Councillors	Michael Blair	01525 404513
	Paul Duckett	07988 184061
Clophill Parish Council	Paul Downing	01525 860350
	(Clerk) James Stirling	01462 887226

HOSPITALS

Bedford (North & South)	01234 355122	Admissions	01234 261150
		Appointments	01234 359012
Luton & Dunstable			0845 1270127

DOCTOR'S CLINICS

Amphill	(Houghton Close) 01525 300898	(Oliver Street)	01525 631395
		(Greensands)	01525 631390
Shefford	Enquiries 01462 818620	Appointments	01462 810034
Barton 01582 528700		Flitwick	01525 715300

POLICE

County Police HQ	Non Emergency	101
Amphill Station		01234 841212
Clophill Local Policing Team		101
		01234 842613

CHURCHES

St Mary's Parish Church	Liz Henman	01525 860108
St Francis RC Church, Shefford	Ian Gordon	01525 860875
Clophill Methodist Church	Jim Davies	01525 860829
Baptist Churches (Amphill) Doreen Gibbs 01525 862424	(Maulden) Ian Crawford	01525 634325
	(Shefford) Hazel Arnold	01462 812564

SCHOOLS

Clophill St Mary's C of E Lower School & Nursery (Headteacher Mrs K Bingley)	01525 860206
Harlington Upper School , Harlington	01525 755100
Preschool clophillpreschool@gmail.com (Chris) 07936 006381 or (Imogen)	07765 887868
Redborne Upper School , Amphill	01525 404462
Robert Bloomfield Middle School , Shefford	01462 628800

Village groups

Beverley Court	860920
Brownies	https://enquiryym.girlguiding.org.uk
Clophill Community Care	Duty Contact 07791 773705
Clophill Heritage Trust	Ali Bradbury 07894 710001
Clophill St Mary's C of E Lower School & Nursery	Sharon Kempson 860206
Clophill Toddler Group	Caroline Daniels 07734 495348
Clophill United Charities	Gillian Hill 860539
Conservation Group	Brian Adams 862297
Flower Club	Gillian Hill 860539
Friends of the Cheshire Home	Sue Pearson 861110
Funzone After School Club	07903 167493
Greensands Community Choir	Luke Howard 07975 520085
Indoor Carpet Bowls	Tony Meredith 860754
Messy Church	Victoria Higgins 07920 568861
	victoriajhiggins@hotmail.co.uk
St Mary's PTA	Julia Skelton 07774 993973
Scouts and Cubs	www.scouts.org.uk/get-involved
Tea and Chat	Anita Errick 860695
Tuesday Club	Betty Hampson 860750
Village Hall Booking Secretary	Marilyn Browning 07821 643936

Stand out from the crowd

It can all start with your logo...an effective logo creates an expectation about the qualities of a product or service. Simply buying an off-the-shelf logo from the internet can be a false economy as it could actually cost you potential new customers.

I have over 20 years' experience as a graphic designer producing bespoke logos for businesses of all sizes, creating unique brands that make a company more memorable.

I also offer a range of graphic services, including brochure and leaflet design, web design, adverts, posters and pull-ups, exhibitions, vehicle livery, packaging and many more things besides.

I'd love the opportunity to discuss how I may be able to help your company stand out. **Feel free to get in touch.**

abrahams
CREATIVE

www.abrahamscreative.co.uk

INTRODUCTORY OFFER
**Let me design a unique
logo for your business**

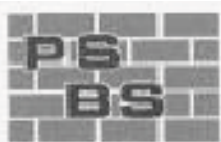
£495*

(includes 250 printed business cards)

*For further information, please contact Chris:

Telephone: +44 (0)7889 617950 Email: chris@abrahamscreative.co.uk

beinspired
CREATIVE SOLUTIONS FOR PRINT & WEB



PETER SHARPE BUILDING SERVICES LTD

**Call us first for ALL your building works
and get reliability, quality & sensible prices.**

- Domestic extensions
- Design & build service
- General building works, drives, patios
- Carpentry, kitchen fitting, wall & floor tiling
- Laminate flooring & hardwood flooring
- Mini digger and driver hire
- Electrical installations including Building Regulation part P certification
- Roofing repairs carried out
- Conservatories, UPVC windows

‘BEDFORDSHIRE’S PROFESSIONAL BUILDER’

01525 872762 / 07850 803021

email: psbsltd@btconnect.com



Painter and Decorator

Call Chris : 07950714579

facebook: @christopherthepainter

email: chris.minihane@btinternet.com

do you want your home brightening up?

all interior & exterior work

no job too small!

free no obligation quote

25 years experience & fully insured



Bowbelles Grooming Room

Dog grooming in an intimate, purpose-built grooming room with top-of-the-range equipment

Baths or full groom • Micro chipping service • Fully insured

Call Becky on 07746 546410



Find us on facebook

6 Little Lane, Clophill MK45 4BG



Telephone
**01525
860526**

The Stone Jug

A Free House
BACK STREET, CLOPHILL

2017 sees us celebrating our 35th anniversary – yes, it really has been THAT long! However, it's not out with the old and in with the new as we believe in traditional, honest values – which is why our smiler, Bob, and the matriarch, Joyce, are still holding court! Make 'The Jug' part of your tradition in 2017 and experience a 'proper pub for proper people', as my late dad used to say. Cheers!

- 5 real ales, including 2 guest pumps that change frequently (see our Facebook page for details)
- selection of wines and Prosecco by the glass – or even better, by the bottle
- home-cooked lunches Tues-Sat, 12pm-2pm



REMEMBER OUR MOTTO

"A VISIT TO THE JUG IS BETTER THAN GOING TO A PUB"
CHEERS JOYCE & VIKKI

www.stonejug.co.uk

www.facebook.com/thestonejugclophill

Hire Clophill Village Hall



Wedding Receptions
Birthdays & Special Occasions
Dances and Discos
Club & Community Meetings & Activities

Phone: 07821 643 936

Mail: Clophill.villagehall@gmail.com Web: www.clophillvillagehall.co.uk



DANIEL
DESIGN & BUILD LTD

Matthew Dibden

- Architectural Design
- Planning Applications
- Building Regs

Office: **01525 860186**

Mobile: **07972 197754**

Email: **matt@daniel-design.co.uk**



www.daniel-design.co.uk



Tel: 07966 665654

Web: **www.emtacademy.co.uk**
Email: **carrie@emtacademy.co.uk**



EMT Academy – Emergency Medical Training is a Clophill based First Aid Training company

All EMT Academy trainers have worked professionally as Emergency Medical Technicians, Paramedics or Police Firearms Medics so we can bring real life experience and scenarios to your course.

Courses Available

- First Aid at Work
- First Aid at Work Requalification
- Emergency First Aid at Work
- Annual Refresher
- Automated External Defibrillator
- Family First Aid
- Paediatric First Aid
- Basic Life Support
- Bespoke First Aid*

Our feedback shows that the one-to-one practical skills taught by our instructors ensure students feel confident to deal with any unexpected medical emergency.

If you are a parent, grandparent, babysitter, childminder, carer, employer or an organisation* e.g. sports clubs, Guides/Scouts, equestrian, please contact us, we will be happy to discuss which course will best suit your needs.



*Offering
holistic
therapies*

- Reflexology
- Reflexology for fertility
- Pregnancy massage
 - Ear candling
 - Reiki healing
- Indian head massage

Treatments available in Clophill & Ampthill. Qualified and insured with nine years experience

For information and appointments call Lorraine on **07708 580308**



www.librawellness.co.uk



- Accountants who know how businesses run
- Qualified Chartered Accountant and Chartered Tax Advisor
- Friendly Accountants who listen to your needs
- A wide range of services offered

Call

01525 552250



for a FREE initial meeting

www.savageaccountants.co.uk

Company Registration Number: 09214570
Cure your tax headaches

*Hairs
& Graces*
Unisex Salon



Wet Cut £17
Cut & Blow Dry £28
Colours start from £25
Special OAP rates

Opening Hours:

Monday	9.30-2.00
Tuesday	9.30-5.00
Wednesday	9.30-5.00
Thursday	9.30-8.00
Friday	9.30-8.00
Saturday	9.30-4.00

*Zoe, Donna, Gemma
and Amanda look forward
to welcoming you.*

Ring now to book an
appointment.
Appointments also
available with our Barber.

Burgoine Business Centre, 117 Clophill Road, Maulden MK45 2AE

01525 861491 • Loads of free parking



Automotive Services

FOR ALL YOUR VEHICLE REQUIREMENTS

We are your one-stop shop...

- servicing from £50, including parts
 - MOT test - £25
- collection & delivery service
 - interest-free credit
 - nationwide warranty
- tyres fitted from £18 – largest stockist of tyres in Bedfordshire
 - free courtesy cars

Opening hours:

Mon-Friday, 8.30am-5.30pm; Sat, 9am-1pm

01234 216003

35 Brunel Road, Bedford MK41 9TJ

www.automotiveservicesbedford.co.uk



Mindfulness Movement & Meditation

RELAX

STRETCH

MEDITATE



**This class teaches relaxation & breathing techniques,
together with gentle yoga-based stretches and postures**

Clophill Centre: Thursdays 9.30am-10.45am

Contact Ann for more information and booking

0779 1171980 ann.okeeffe@btinternet.com

CLOPHILL TODDLER GROUP

Understanding the importance of a child's play

**LOTS OF TOYS, SPACE AND FRIENDS
FOR BABIES AND TODDLERS UNDER 3**

**FRIDAYS 10am – 11.30am at the Village Hall
See 'Village Groups' for contact details**



Linda Allsop

PHYSIOTHERAPY



Chartered
Physiotherapist
with over 30 years
experience in both
the Private Sector
and the NHS.

01462 711978 | 07989 257026
www.linda-allsop-physio.co.uk

USING PARABEN & SULPHATE FREE, 100% VEGAN,
CRUELTY FREE PRODUCTS



A Cut Above Hairdressing

by Rachel

In the comfort of your own home
cutting & styling specialist

call or text : 07896009382
facebook: acutaboverachel


Salon experienced
Fully insured
Fully qualified to Level 3 Standard.

PERSONAL DOG WALKER

£10 per hour
£6 per half hour

- First Aid Certified
- Insured



Text or call Corrane on
07576 473373 or 01525 630740
 Corrane's personal dog walking

SJ TAX & ACCOUNTING

QUALIFIED ACCOUNTANT

Professional friendly services,
Tax advice, Free initial consultation,
Sole trades, Ltd companies,
Bookkeeping, Payroll,
CIS, VAT & Tax

DOWNLOAD OUR FREE APP
"SJ TAX LTD"

contains lots of free tax info and
a free income and expenses tracker

e: sally@sjtax.co.uk
t: 01234 831997
m: 07899 808592

GCC Greensand Community Choir **LOVE SINGING!** sing with an exciting local choir...

Come along to your local **community choir**,
for men and women of all singing abilities!
Mondays, 8.00-9.30 pm at St. Mary's Church, Clophill.

- Come and sing with an exciting new local choir led by a professional musical director
- Uplifting music in a variety of styles: musicals, classic pop, folksongs, sacred and world music
- Welcoming singers of all abilities - no audition, no need to read music!
- New members - come along any time for a free taster

Enquiries to:

greensandcommunitychoir@gmail.com

or ring Luke on: 07975 520085

ARCHITECTURAL DRAWINGS AND BUILDING DESIGN SERVICES

Professional Architectural design services provided for all types
of private residential building projects including extensions, loft/
garage conversions, garages and outbuildings through to new build
dwellings with all necessary council approvals obtained.

For free estimates and advice contact Steve
Coates on Flitwick 01525 862457 or 07960 215053.

stevecoates72@gmail.com

S & S Coates Surveying & Design, Unit 4 The Courtyard,
r/o 13 High St, Clophill, MK45 4AB.



chartered building engineer



OVENCLEAN.

The original oven cleaning specialists

We clean all types of:

- Ovens
- AGAs
- Grills
- Microwaves
- Ranges
- BBQs
- Hobs
- Extractors

Fully insured, and a proud member of Checkatrade.com

For a quote call Clive on:

07949 233089 or

0800 840 7127

www.ovenclean.com

£5 OFF

Proud members of
Checkatrade.com
Where reputation matters



OPENING TIMES:

Mon	Closed
Tue	9.30-4pm
Wed	9.30-4pm
Thurs	9.30-7pm
Fri.	9.30-6pm
Sat	8.30-4pm

PRICES:

Men's cut.	£12
Clippers.	£10
Buzz cut.	£5
Restyle and fades.	£17
Beard trims.	£10
Childs cut.	£10 (under 6yrs)

We are adjacent to the newsagent. (from time to time there is a large green transit van parked in front of the barbers)

22 High Street, Silsoe MK45 4EP

07813145112

THE BLUECAT



Tel: 01525 861416

www.thebluecat.net

Find us on Facebook @thebluecatcattery or email us at enquiries@thebluecat.net

The Bluecat is a luxury cattery set in the quiet area of Jacques Lane in Claphill. With just 14 cat chalets, we have time to fuss, pamper and play with your cat to its heart's content whilst in our care. Please call for further information.

Misty Double Glazing?

**KEEP YOUR WINDOW FRAMES...
... WE JUST REPLACE THE GLASS!**

• UPVC • Aluminium • Or Wood

Because we replace just the glass the repair is a Fraction of the cost of a complete replacement window.



mistydoublinglazing.co.uk
QUALITY GLAZING SERVICES

01525 876808

WE ALSO REPLACE BROKEN...

• Glass • Handles • Hinges & Locks
AND REPAIR...Patio Doors & Conservatories!

Clophill Preschool

Welcoming children
from **2 years** of age...

in the fantastic setting of Clophill Village Hall. Our highly qualified team is led by a qualified Teacher and a Nursery Nurse. We provide a safe, secure and stimulating environment with brilliant ideas and activities that open the doors to learning and beyond. Come and see what your 2, 3 and 4 year olds can learn with us, our door is always open.

clohillpreschool@gmail.com
www.clohillpreschool.co.uk

Call Imogen 07765 887868
or Chris 07936 006381



Welcome to Clophill St Mary's C of E Lower School and Nursery

A small, friendly, Voluntary Aided Church of England Lower School, graded 'Outstanding' by Ofsted, with close links to the local community.

St. Mary's is a Values based school taking children aged from 2 years 7 months to 9 years and providing them with a framework for living, tightly woven into the positive Christian ethos of the school.

Breakfast and after school care for all ages.

Acorn Nursery

for preschool children aged 2 years 7 months to 4 years with breakfast and after school care available.

Providing 30 hours free childcare entitlement.



To arrange a visit, please call us 01525 860206
or email: generaladmin@nursery@clohillstmarysschool.co.uk
For more information visit: www.clohillstmarysschool.co.uk



The Happy Place.co.uk

On the Green beside the Post Office every Friday
3.30-7.30pm

We are your local mobile fish and chip van, we have been parked on the green every Friday for the past 6 years.

We serve only the highest quality produce, cooked fresh to order and served to you by our friendly staff.

Why don't you pop down and come and
Try Our Fry!

To avoid waiting in the cold, give us a call to

place your order on: 07833 786108

A big thank you to all our customers who have loyally supported us over the past couple of years.

Clophill

Mace

Post Office & Stores

- Fresh bread & dairy produce
- Newspapers & magazines
- Confectionery & tobacco
- Wines, beers & spirits
- Cards & stationery
- Household goods
- Baby products
- Toys & gifts
- Dry cleaning
- Photocopying
- Shoe repairs
- Post office counter services



Shop Hours

Mon - Sat 7.30 - 7.30 | Sun 8.00 - 1.00

Post Office Hours

Mon, Tues, Wed, Fri 9.00 - 1.00, 2.00 - 5.30 | Thu, Sat 9.00 - 1.00

THE GREEN, CLOPHILL 01525 860988

Proprietors:
Deepak & Daksha Chandarana

Stephens

Your local removals & storage company



Specialising in house removals and office relocations in the UK, Europe and Overseas.

REMOVALS

Local, National, International

STORAGE

Secure & Containerised

PACKING

Full Or Part & Materials

LONG ESTABLISHED REMOVAL COMPANY OFFERING A PROFESSIONAL, FRIENDLY SERVICE

COMPREHENSIVE INSURANCE • FREE ESTIMATES

01582 572967

STUART DREW ELECTRICAL SERVICES

MEMBER OF THE ECA

PART P CERTIFIED QUALIFIED TO 17TH EDITION

From extra lights & sockets, to re-wires. Fault finding and electrical safety certification. For a professional, courteous service with free estimates & all work guaranteed, please call me

29 Lincoln Way
Harlington
Beds
LU5 6NG

**Fully qualified & insured
30 years experience**

Telephone:
01525 875965
07941 812662

ROGER STOREY

YOUR LOCAL PAINTER AND DECORATOR

Friendly and Reliable Service

Many Years Experience

Please phone: **01525 861253** or **07800 777615**

Based near Toddington, Bedfordshire.

We rescue, rehabilitate & re-home stray & abandoned cats.

We have lots of beautiful cats waiting for loving homes.

Ring the shelter on 01525 875993

or Sue on 01582 650167 to arrange a visit.



Registered Charity No. 1098984

Visit our website @www.straycatrescue.org.uk

A L & G ABBOTT

Funeral Directors

~ Established 1832 ~

WITH YOU WHEN IT MATTERS MOST

An independent family business continuing to provide a caring & professional service to Bedford, Kempston & the surrounding villages.



- 24 Hour Personal Service
- Pre-Paid Funeral Plans
- Private Chapels of Rest
- Green Burials
- Home Arrangements
- Civil Services Available



T 01234 843222

www.abbott-funerals.co.uk support@abbott-funerals.co.uk

150 BEDFORD ROAD, KEMPSTON, BEDFORDSHIRE, MK42 8BH

AIMS

Tim Kemp BA FCA
Top Barn Rectory Road
Steppingly MK45 5AT

TEL/FAX : 01525 717141
MOBILE : 07900 823 012
www.aims.co.uk
e-mail: timk@aims.co.uk

- ◆ **Professional** service providing for all your accounting and tax needs
- ◆ **Practical** advice based on 20 years experience in **running** businesses
- ◆ **Personal** approach with fixed fees relevant to the work **you** need
- ◆ **Friendly, local** accountant supporting the community for over 20 years

Please call for a free, no-obligation initial meeting

ACCOUNTANTS FOR *business*

Hills-Howson Financial Services

Financial adviser appointments available in your home or our office

The Old Post Office
53 High Street
Clophill
Beds MK45 4BE

Tel: 01525 861803
www.hills-howson.co.uk
hills.howson@btconnect.com

Including:-

Investments

Pensions

Protection

Annuities



W&H PEACOCK
AUCTIONEERS & VALUERS

Auction Sales and Valuations

Valuation, collection & auction
service of individual items through
to complete property clearances.

Call for a free no obligation
collection quote or email
info@peacockauction.co.uk

SALE ENTRIES NOW INVITED

Bedford Auction Centre, 26 Newnham Street, Bedford MK40 3JR

01234 266 366 peacockauction.co.uk



THE COMPUTER MAN



Got a problem with your computer and don't know what
to do? Suffering with a virus or spam?

Don't hesitate! Ring your local computer expert

**Remote repairs or home visits
(Day, evening & weekend)**

**Lap top/desk top loan
(Free pick up & drop off in local area)**

Comprehensive health check from £35 (**Special Offer** £35 - normally £40)
Refurbished fl at screen available from £15 • Refurbished base units available from £99



Contact Stephen Amos
07976 718567
the.computerman@ntlworld.com





rincon tuition - Spanish & Maths

Expand your knowledge. Boost your confidence

01525 860743

Exam techniques and preparation. Revision and practice papers: SATs and GCSE

Spanish for business or pleasure, all levels. GCSE & A-levels

Skills development: conversation, reading and writing

Maths: Boost your confidence and abilities

KS1, KS2, KS3, SATs and GCSE practice papers

DBS checked and references - Reasonable rates

01525 860743 - 07952 667814 rincontuition@aol.com



LIZZIE BROWN PET CARE & HORSE GROOM SERVICES



**DOG WALKING
PET POP-IN & FEEDING
PET/HOUSE SITTING
EQUINE GROOM***

(*BTEC Cert Equine Management)



Lizzie Brown 01525 862459 / 07500 989 700

Reliable friendly local service

Short notice available (no contract commitments)

Insured Quality references available CRB checked*

*(Disclosure & Barring Service)



Baths, Toilets &
Showers
Sinks and Taps
Guttering
Leaks and Burst Pipes
Drainage
Handyman jobs also



Silsoe based
No call out fee – free estimates
Fully insured and guaranteed
No job too small
07720 723653 01525 864859
info@betaplumbing.co.uk
www.betaplumbing.co.uk

Foot Health Practitioner

Corns, Hard Skin, Verruca, Fungal Nail Infection,
In-growing Toe Nails, Diabetic Foot Care, Athlete's Foot,
Pedicure, General Nail Cutting etc.

In the comfort of your home or at my clinic

Ann Gibbons MCFHP, MBAFHP.

Competitive Rates

Tel: 01462 813252 Mob: 07872 315763

Web: www.shamrockclinic.co.uk

For opening hours and other details please refer to my website



GARDEN DOCTOR

Rob McLeod
Pruning Specialist

Professional, Local, Experienced

- * All tree and hedge work undertaken
- * High standard of work
- * Rubbish cleared from site
- * Free Quotations
- * Local, reliable service you can trust



Tel: 07763 239340 or 01525 861568
email: garden.doctor@btinternet.com

Tree Surgery & Removal
Shrubs & Fruit Trees
Pruning & Spraying
Fully certificated and
insured

Call the Garden Doctor and bring Good Health to your Garden



We'll get you up and running!

We offer the very best physiotherapy care from a friendly approachable team of nine highly trained Chartered Physiotherapists all members of the Health Professionals Council

Expert treatment including:

Neck/Back/Hand and Tennis Elbow Pain
Headaches/Migraine/Sciatica
Incontinence/Pelvic/SIJ/SPD/Pregnancy Back Pain
Sprains/Strains/Torn Ligaments
Whiplash/RSI/Osteoporosis/Sports Injuries

Specialist Physiotherapists:

Neurological, Paediatric, Vertigo and Dizziness

We also offer complementary treatments:

Acupuncture, Reflexology, Massage, Indian Head Massage,
Chinese Herbalist, Lymphatic Drainage and Pumps



Tel: 01525 720882 www.chartered-physiotherapy.co.uk Email: amphillphysio@btconnect.com

7 Station Square, Flitwick, MK45 1DP

E.T. Accountancy Services

Experienced Chartered Accountant and Chartered Tax Adviser based in Clophill providing a full range of accountancy and taxation services to businesses and private individuals.

To arrange a free initial consultation please telephone me on
01525 590465 or email emma@et-accountancy.co.uk

Chartered Accountant and Chartered Tax Adviser

Emma Thoulass FCA CTA www.et-accountancy.co.uk 01525 590465

Chapman & Kirby Heating

Gas, Plumbing & Heating Installations

Gas Safe Registered

Boiler Servicing & Maintenance



Call us now

Tel: 01525 861255 Mob: 07831 132308

Email: info@chapmanandkirbyheating.co.uk

1C, Old Silsoe Road, Clophill, Beds., MK45 4AR

NEVILLE

FUNERAL SERVICE

Established 1875

Reassurance when you need it most

Serving the people of Bedfordshire since 1875



Neville Funeral Service

inc. George Squire & Sons since 1976

24 Clifton Road

Shefford SG17 5AE

t: 01462 813258

e: shefford@nevillefuneralservice.com



Neville Funeral Service

The Old Church Flitwick Road

Amptill MK45 2NT

t: 01525 406132

e: amptill@nevillefuneralservice.com



www.nevillefuneralservice.com

The UK's No.1 Lawn Care Company



- Scarification
- Aeration
- Lawn Fertilising
- Weed Control
- Moss Control
- Water Conserver
- Pest and Disease Management



GreenThumb has a variety of treatment programmes to suit your pocket that include our traditional 'pay-as-you-go' service and our new, pay monthly, Direct Debit programmes, where you can save up to 25% annually.

Our treatments start from £5 per month, that's cheaper than D-I-Y and without the hassle!

Call your local branch today for a FREE lawn analysis and no obligation quote.

0800 0111 222

GreenThumb
LAWN TREATMENT SERVICE



Find us online at: www.greenthumb.co.uk



EST.
1989

- Suppliers of traditional and modern equipment
- Working whirlpool & spa baths, power & steam shower systems on display
- Over 40 settings on display
- Complete installation service if required
- Personal friendly service from a family run business
- Wall and floor tiles
- Accessories
- Mirrors
- Bathroom furniture
- Heated towel rails
- Saunas
- Bathroom cabinets

SHEFFORD 01462 627002

www.bathroomvogue.com

Unit 4A, Shefford Industrial Park, St Francis Way, Shefford SG17 5DZ

Woburn
Country Foods

A Mark of Quality

WOBURN COUNTRY FOODS

Online - Catering - Retail Butcher

High Quality Local Meat

- 21 Day Matured Beef -
- Farm Assured Chicken -
- Bedfordshire Lamb -
- Bedfordshire Pork -

The Farm Shop, West End Farm
Haynes West End, Bedfordshire
MK45 3RA

Order Online & Collect In Store
www.woburncountryfoods.com

LOCAL ALLOY WHEEL REFURBISHMENT


mintalloys
complete alloy wheel refurbishment

Tel:
01525
860069

Alloy Wheel Repairs

Diamond Cut Alloy Wheels Repaired On Site

Powder Coat Primers & Lacquers

Fast Turnaround Alloy Wheel Welding

Tyres At Competitive Prices

NEW for 2015 - 4 Wheel Alignment Service

www.mintalloys.co.uk



Peter Hendry
Traditional Window Cleaner
07590599381
 phendry8@hotmail.co.uk

Time to Shine



Compu-Doc
 PC / laptop crisis ?
 01525-402227
 john.stafford@compu-doc.co.uk

Call the Doc for -
 Hardware & software
 Diagnosis & treatment

Daisy Cooper

Spring cleans, one off cleans and moving home cleans all available.

Daisycooper22@hotmail.co.uk
 Please call 07913 332914



Keeping your home as fresh as a Daisy

Nature is our theme.....

Boarding Dogs & Cats
Day Boarding - Dogs
'Nature' Food Shop
plus
On site Grooming - Dogs
Off site Walking - Dogs

Conifer
 Kennels & Cattery
01525 860339

www.coniferkennels.co.uk 

nutriment ENHANCED raw diet formula
natures menu REAL FOOD PETS LOVE
frozys
Green Pantry
ARDEN GRANGE

APPROVED STOCKIST: Conifer Kennels & Cattery, The Causeway, Claphill, Beds. MK45 4BA



Wrest Park Day Nursery, Silsoe

Come and visit our beautiful nursery and pre-school based within the grounds of Wrest Park. We offer care for 0-5 year olds 8am to 6pm Monday to Friday for 51 weeks of the year.

We were Rated 'Good' by Ofsted in May 2014 and they commented that 'Staff are enthusiastic, model good social behaviour to children and offer frequent praise' (Ofsted 2014).

We offer all day sessions, am or pm sessions or a 9-3 'school day' session. We accept childcare vouchers and 2,3 and 4 year old funding.

Please call us on 01525 861743 or info@wrestparkdaynursery.co.uk
www.wrestparkdaynursery.co.uk



BURGLAR ALARMS

New Alarms Fitted or Upgrade Existing Alarms

BURGLAR ALARMS

We fit New Alarms - Wired or Wireless Systems
We can service and maintain your existing alarm

CCTV

We fit high quality systems to maximise your security.
Access your CCTV via the internet or mobile.

DOOR ENTRY

We fit a range of quality video and audio intercoms
to suit your needs.

*We are a family run business with over 35 years
experience in home security and crime prevention.*



www.maximumsecuritysystems.co.uk

Contact:

01582 864138 / 07746 111520

For a free quote and consultation

Root 'n Branch

Your Local Friendly & Reliable Gardener

All aspects of Garden Maintenance undertaken
• PRUNING • MOWING • WEEDING • PLANTING • HEDGING

Southfields, Shefford
email: whooley@hotmail.co.uk

Tel: 07771 537385

Public Liability
Insured

ADAM IN YOUR GARDEN

**TREE SURGERY, HEDGE TRIMMING,
TURFING, FENCE MAINTENANCE,
DECKING, PATIO CLEANING**



Qualified, Fully Insured, Competitive Rates
Free Estimates

TEL: 01582 518954 MOB: 07828 490360

Web Site: www.adaminyourgarden.co.uk

ANDREW BAKER WINDOWS

9 SHEFFORD ROAD
CLOPHILL BEDS
MK45 4BT

SPECIALISING IN UPVC WINDOWS,
DOORS, CONSERVATORIES,
FASCIA, SOFFITS, GUTTERS AND
CLADDING. ALSO AVAILABLE FOR CARPENTRY
WORK. NO JOB TOO SMALL OR LARGE.

20 Years experience.
Free local quotes.

FENSA

Fensa Registered
FIVE YEAR GUARANTEE

Contact Andrew: **01525862804 / 07825017855**

Email: **abakerwindows@gmail.com**

HIGH QUALITY CARPET, UPHOLSTERY, RUG AND LEATHER SUITE CLEANING

Ring Steve

(Barton) 01582 882620

(Mobile) 07769 042523

Email: bedscarpetcleaners@gmail.com

www.bedscarpetcleaners.co.uk



McCaffrey

Your central resource for residential
build, refurbishment and maintenance



General Building Works
Extensions
Internal Refurbishment/Alterations
Garage Conversions
Loft Conversions

Brickwork
Carpentry
Painting & Decorating
Purpose made Joinery
Bi - Folding Door Applications

Plumbing and Heating
Electrical installations
UPVC/Timber Windows
UPVC Conservatories

T. 01525 861041

E. info@mccaffreybuild.co.uk

W. www.mccaffreybuild.co.uk



WEC, BUILDING 52, WREST PARK,
SILSOE, BEDFORDSHIRE, MK45 4HS

COMPANY NUMBER: 7240869

McCAFFREY BUILDING CONTRACTORS LTD



OSTEOPATHY

Deborah Beare BSc (Hons) Ost.
Registered Osteopath

**The Clophill Centre for
Complementary Therapy**
Clophill Fruit Farm,
Shefford Road
Clophill

- Cranial & Structural Osteopathy
- Neck & Low Back Pain
- Muscle Tension
- Sports Injuries
- Arthritic aches & pains
- Headaches

To book appointments call: **07969 921112**

Washing Machines Dishwashers Dryers Electric Ovens Repairs Servicing Sales



A local family business offering
a quality service at a competitive price
Est. 1981

Tel: CLOPHILL 860148
or Tim Downing direct on 07969 545 276

A member of the White Goods Trade Association
Fully Insured

MB

ACCOUNTING SERVICES

accounting solutions for the
Self-Employed and ***Small Business***
including

HMRC tax returns • Accounts • Bookkeeping

For a totally confidential service at **very competitive rates** contact
Richard Fairholm T: 01525 861087 M: 07714189994 E: mbaccounts@btinternet.com



JAMES BONFIELD

CARPENTRY & CONSTRUCTION

ALL CARPENTRY & BUILDING SERVICES PROVIDED

Double Glazing • Windows & Doors • Granite Work Tops
Kitchens & Bathrooms • Wood & Laminate Flooring • Loft & Garage Conversions
Mini Digger & Driver For Hire

Call James 7 days a week on

01462 231734 07595 752466

jamesbonfieldcarpentry@yahoo.co.uk
Shefford, Bedfordshire



David Carpenter

BUILDING SERVICES

Friendly local craftsman and restorer Est. 1986

MOST BUILDING WORK UNDERTAKEN INCLUDING
Carpentry and Joinery, Bricklaying, Roofing, Plastering, Tiling
And much more

Please call me on: 01582 881015 Mobile: 07954 828695
to arrange a visit to discuss your requirements.

Free estimates provided
References available

Advertisers index

Architectural Services

Daniel Design & Build 20
S&S Coates Surveying & Design 24

Auctioneers & Valuers

W&H Peacock 31

Bathroom Services

Bathroom Vogue 36

Builders & Carpenters

James Bonfield Carpentry & Construction 43
David Carpenter Building Services 41
McCaffrey Build 43
Peter Sharpe Building Services 18
Stuart Benson Building Projects IFC

Carpet Services

Carpet & Upholstery Cleaning 41

Car Services/Repairs

A&F Motors Ltd IFC
Automotive Services Bedford 22
Mint Alloys 37
TC Coomber Car Services BC

Chimney Sweep

Poppins Chimney Sweep IBC

Cleaning Services

Daisy Cooper 38
Ovenclean 25
Time to Shine – Window Cleaner 38

Computer Services

Compu-Doc 38
The Computer Man 31

Design and Marketing

Abrahams Creative 17

Electrical Services

Stuart Drew Electrical Services 28

Financial Services

AIMS Accountants 30
ET Accountancy Services 34
Hills-Howson Financial Services 30
MB Accounting Services 42
Savage Accountants 21
SJ Tax & Accounting Services 23

Food Suppliers

Woburn Country Foods 37

Funeral Services

AL&G Abbott, Funeral Directors 29
Neville Funeral Service 35

Garden Services

Adam in your Garden 40
Garden Doctor 33
Green Thumb Lawn Treatment 36
Root 'n Branch 40

Health & Beauty

A Cut Above Hairdressing 23
Amphill & Flitwick Physiotherapy 34
Deborah Pedley Osteopathy 42
Hairs & Graces 21
Libra Wellness 21
Linda Allsop Physiotherapy 23
Mindfulness Movement & Meditation 22
Route 66 Barbers 25
Shamrock Clinic - Foot Health 33
The Tanning Salon BC

Home Improvements

Christopher The Painter 18
Roger Storey - Painter & Decorator 28

Medical Training Services

EMT Academy 20

Music and Entertainment

Greensands Community Choir 24

Nursery Schools

Clophill PreSchool 26
Clophill St Mary's C of E 31
Lower School and Nursery 26
Clophill Toddler Group 22
Wrest Park Day Nursery - Silsoe 39

Pet Services

Bowbelles Grooming Room 19
Conifer Kennels & Cattery 38
Lizzie Brown Pet Care 32
Personal Dog Walker 23
Stray Cat Rescue 28
The Bluecat Luxury Cattery 25

Plumbing & Drainage Services

Beta Plumbing 33
Chapman & Kirby Heating 34

Post Offices

Mace Post Office & Stores 27

Print Services

Amphill Print Centre IFC

Public Houses

The Stone Jug 19

Removals & Storage

Stephens 28

Repair Services

Tim Downing Repair Services 42

Security Services

Maximum Security Systems 39

Take-aways

The Happy Plance 27

Tuition Services

Rincon Tuition (Spanish & Maths) 32

Village Hall

Clophill Village Hall 19

Windows/Replacement

Andrew Baker Windows 40
AW Windows IBC
Misty Double Glazing 25

IFC = Inside Front Cover

IBC = Inside Back Cover

BC = Back Cover

Ads from as little as £50 per year

For further information about advertising in Spotlight,
please contact our Advertising Manager at ads@clophillspotlight.co.uk



Poppins Chimneys

**Chimneys Swept
Wood and Multifuel Stove
Installation & Liners**

Great Service - Great Price!



01525 860424 or 07858 688785
mark@poppinschimneys.co.uk

**NO PRESSURE SALES – YOU DEAL WITH
THE OWNER FROM START TO FINISH**



- ✓ A-rated windows as standard
- ✓ Composite doors
- ✓ High security
- ✓ Bifolding doors
- ✓ Conservatories
- ✓ Fascias, soffits and guttering
- ✓ Insurance-backed guarantee
- ✓ Fensa certificate



Contact: ANDY WOOD

01582 536944 or 07796 272539
sales@awwindows.co.uk



See reviews from satisfied customers at awwindows.co.uk

The Tanning Station & Pebbles Beauty

- HD Brows
- LVL
- Tinting
- Eyelash extensions
- Spray Tans
- Waxing
- Intimate Waxing
- Mens Waxing
- Massage
- Make-Up
- LCN Gel Nail extensions
- Acrylic Nail extensions
- Jessica GELeration
- Manicure
- Pedicure
- Footcare Specialist
- Facials
- Hair-up



Open 7 days a week



Like us on Facebook



2 Steppingley Road, Flitwick, Bedfordshire. MK45 1AJ
01525 720095 www.tanningstation.co.uk

T.C. COOMBER



MOT'S CLASS 4/7
SERVICING & REPAIRS
CAR & COMMERCIAL
TYRES & EXHAUSTS
AIR CONDITIONING
DIAGNOSTIC CODE READING

**Collection
& Delivery**
SERVICE AVAILABLE
Please ask

AMPTHILL
01525 406330

UNIT F, AMPTHILL INDUSTRIAL ESTATE, STATION RD, AMPTHILL, MK45 2QY