

Vol 40 | No.8

FREE

CLOPHILL SPOTLIGHT

OCTOBER 2018

LOVE YOUR
LOCAL NEWS

AMPTHILL PRINT CENTRE

**DIGITAL PRINTING
DESIGN & MARKETING
DIRECT MAIL**

and much more...

...and we're right on your doorstep at

Unit 24 Station Road Ind Est, Ampthill, MK45 2QY
(Just off the A507 Ampthill bypass, past the Post Office)

WE PRINT...

- Stationery
- Newsletters
- Menus & Tent cards
- Brochures
- Flyers & Leaflets
- Catalogues
- Books & Booklets
- Direct mail
- Training Manuals
- Banners & Posters
- Greeting cards
- Calendars
- Labels & Stickers
- NCR pads
- Folders
- Exhibition panels
- CD/DVD duplication
- Photocopying

3 DAY STANDARD SERVICE | SAME DAY AVAILABLE

www.fidelityprint.co.uk

Get a quote 01525 300001 quotes@fidelityprint.co.uk

fidelity[®]

Unit 24 Station Rd Ind Est, Ampthill



MOTORS LTD

Tel: (01525) 860292

Tel: (01525) 404919

208 Clophill Road, Maulden, Bedfordshire MK45 2AF
89 Oliver Street, Ampthill, Bedfordshire MK45 2SA

**CAR AND COMMERCIAL VEHICLES
ALSO CLASSIC & AMERICAN CARS
SERVICING – REPAIRS – BREAKDOWN
SPRAYING – M.O.T.**



Stuart Benson Building Projects

**Design, Build and Maintenance including Interior Refurbishments,
Kitchen / Bathroom fitting, Tiling, Flooring, Skirting boards, Doors
Garage conversions. Exterior Decking, Patios, Driveways
Garden Offices/ Sheds**

Tel: 07946 579862 or 01525 403083

Email: benson.stuart@.googlemail.com



Welcome to *October*

Inside Spotlight you'll find news, articles and events to keep you up to date with what's happening in and around Clophill. Plus plenty of ads from local businesses in the area.

The magazine staff

EDITOR/ADVERTISING
MANAGER

Helen Gent
editorial@clophillspotlight.co.uk
ads@clophillspotlight.co.uk

864836

DESIGN MANAGER

Chris Abrahams
cmabrahams@yahoo.co.uk

DISTRIBUTION MANAGER

Pete Liddle

860113

TREASURER

Richard Pearson

861110

Deadline for articles is 20th of the month

You can also read Spotlight online
www.clophillspotlight.co.uk

FIREWORK NIGHT

SATURDAY 3RD NOVEMBER

BAR BBO GAMES STALLS

@Clophill St Mary's Lower School

GATES OPEN 5.30pm FIREWORKS 7.15pm

IN ADVANCE FAMILY TICKET £15
(2 ADULTS AND 2 CHILDREN) £1 PER EXTRA CHILD

IN ADVANCE - ADULT £6 / CHILD £3

ON DAY - ADULT £7 / CHILD £3



Tickets available from school reception or
www.pta-events.co.uk/fosmc

NO SPARKLERS ALLOWED
CHARITY NO.1062795



News from Clophill Heritage Trust



Walks, jam and gin... September is always a busy month and we participated in the Bedfordshire Walking Festival by holding a 'Trails & Tales' walk. A twilight walk through local countryside and woodland was followed by folk tales around a camp fire – along with soup and cake. We also held our first Foraging Walk & Workshop, where local expert and Spotlight's gardening columnist Kate Gardner led our group on a foraging walk and then helped them turn their finds into jam and gin.

Community Stone Laying Day Last month we held a Community Stone Laying Day where people came along to lay a stone into the churchyard wall as part of the repairs we've been doing. The Poetry & Peace path is also taking shape and we hope to have this complete by the end of October.

We're holding our popular **Pumpkin Festival on 27th October**. We provide locally grown (and very large) pumpkins – and our wardens do the messy scooping-out bit for you, so you can just enjoy carving it to take it home. You'll need to reserve yours, though, as we can't guarantee availability on the day. www.clophillecolodges.org.uk/events



We're looking for a **volunteer with book-keeping knowledge** to assist with our accounts. Please contact one of the wardens on **07935 911207** if you feel you could help.

Don't forget – Clophill residents get a **20% discount** when booking accommodation at the Eco Lodges. Ideal if you need extra space for friends and family to stay at Christmas.

**For info call 07935 911207 or email info@clophillecolodges.co.uk
[www.Facebook.com/ClophillEcoLodges](https://www.facebook.com/ClophillEcoLodges)**

News from Clophill Methodist Church

Firstly we'd like to welcome our new minister, **Silas Wood, and his wife, Sue**, to our circuit, and we hope they are settling in well. We've had a busy few months at the church. At the end of July we bid a fond farewell to Reverend Graham and Jane as they moved onto pastures new. In September one of our church members took part in the Annual Sponsored Bike and Hike, raising funds for Beds and Herts Historic Churches Trust, and this was followed by our Harvest Festival, with donated produce going to Prebend Street Refuge. Messy Church also returned after the summer break with a Harvest theme linking with our harvest festival.

We're looking forward to this month's **Autumn Beetle Drive**, a fun event for all ages, and preparations are under way for our Alternative Christmas tree festival in December. **Nicola Wood**



St Mary the Virgin Church

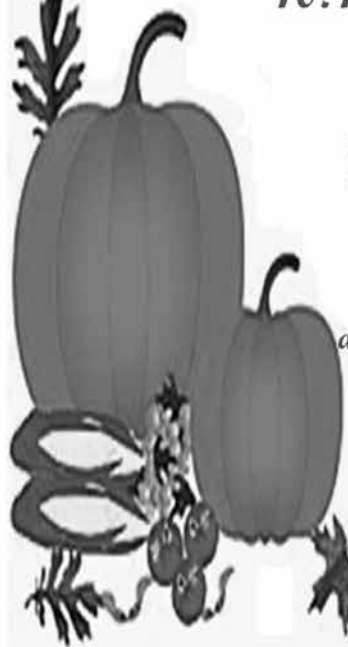
Clophill

Traditional Harvest Festival

10:45 Sunday 7th October 2018

We will be collecting dry, tinned and packet foods to be distributed to Noah Enterprises – a charity supporting the homeless. We shall also have a collection for the Bishop of St Albans' 'Give Peas a chance' project and information about this interesting appeal is available on the Diocese of St Albans' web site

www.stalbans.anglican.org



Clophill Preschool News



What have we been up to since we started this term? Well, we've welcomed lots of new children and their families. The children have enjoyed exploring the new bank area and the newly renovated mud kitchen and have been making mud pies and putting muddy hand prints on the tree trunks. The allotment has been dug and weeded by the children and they've transported manure in wheelbarrows and buckets onto the freshly turned earth ready for spring. We've also checked on our pumpkins and picked the last of our tomatoes, which we used for maths. And of course, we've been doing plenty of **mud jumping!**



The children explored the new sensory and feelings area inside and practised their mark making using traditional tools. We've been mark making outside, too, chalking on the patio and fence, and writing in the earth with sticks. There has been (pretend) fire building, talking about safety and heat, and **compasses and magnets** have been used to explore direction.

Katie has been in to do dancing with the children, we've had Chris the Music Man playing instruments and Rosemary from St. Mary's Church visited us for Harvest, which was beautifully done as usual and we collected food from our parents for donations. And also Tom from the Parish Council popped in to discuss our outdoor development plans.

This month we're looking forward to our **cookery week**, when we shall be cooking bread every day!

We have lots of **thank you messages**. To Gary and Jake for their help turning our outdoor area into the fantastic space we have now. To the Parish Council and VHC for the new tarmac driveway to the village hall – it's brilliant to have a much safer and smarter looking entrance. And to Steve from the Village Hall Committee, who spent time at the start of term tidying the flower beds and planters around the hall. And a **big hello** to our new staff member, Carol. She's brimming with passion for the job and together with the fantastic Emma is helping to make our little team stronger than ever.

Don't forget we're always **collecting clothing, shoes and bedding** for our Happy School Bags collection so give us a shout if you have anything you'd like to donate. And a date for your diary – our first ever **Christmas Market** is on Tuesday 20th November, from 7pm-9pm at the village hall. We're accumulating a fabulous selection of stallholders selling all kinds of wonderful Christmas gifts and goodies, so please do come along.

Before we go – do have a look at our newly renovated website... and if it inspires you to come and visit then just get in touch!

- Contact Imogen on **07765 887868** or Chris on **07936 006381** or email clophillpreschool@gmail.com. Our website is www.clophillpreschool.co.uk



St Mary's Church News

Last month our two churches came together in St. Mary's to hold a Big Coffee Morning for Macmillan Nurses, as we have done for several years. About 70 people attended to enjoy the coffee, delicious cakes and the company of friends and neighbours. At least **£600 was raised by donations** and the all-important raffle. A big **'thank you'** to all who participated in any way.

Christine's quick 'n' easy recipe

Cod Loin with Asparagus, Spinach and Saffron Sauce



INGREDIENTS Serves 4

- 600g cod loin
- 100g fresh asparagus
- 30g shallot, finely chopped
- 80g pancetta or streaky bacon
- 20g butter
- 1 heaped tbsp plain flour
- large pinch of saffron fronds
- large bag of fresh spinach leaves
- 2 large cloves of garlic
- extra virgin olive oil
- 10ml fresh fish stock
- salt & freshly ground black pepper

1. Cut the cod loin into four equal pieces and wrap in the pancetta slices.
2. Blanch the asparagus in salted water and set aside to be reheated later.
3. In a large pan heat 1tbsp olive oil and a whole clove of garlic and wilt the spinach leaves. Season to taste and set aside to reheat later.
4. To prepare the saffron sauce, soak the saffron fronds in a very small amount of warm water for about 10 minutes.
5. Melt the butter in a saucepan and stir in the plain flour. When this is thoroughly mixed in add the fish stock and keep stirring to get a smooth sauce. Then add in the soaked saffron. Adjust the seasoning to taste.
6. Heat a little olive oil over a medium heat in a frying pan then add in the finely chopped shallot and remaining finely chopped clove of garlic and fry gently until soft but not browned. Add in the pieces of cod loin and fry gently until cooked through – about 3 minutes each side.
7. Whilst the cod is cooking reheat the asparagus and spinach.
8. To plate up, place a bed of asparagus on the plate and top with a good spoonful of the spinach. Top with the cooked cod and pour over the saffron sauce.



Christine runs Italian cookery classes at Casa Fellini in Clophill
www.casafellini.co.uk

St Mary's School News



We're now back into the full swing of school life after a lovely long summer break. We have enjoyed welcoming all our new children into Acorn Nursery, Reception Class and within other classes in the school and hope their experience so far has been very positive.

We've also welcomed four University of Bedfordshire students into our school. They will be completing their Post Graduate Certificate in Education with us – training to be the next generation of teacher.

Last month we held a **Jeans4Genes Day** and Oak Class began their swimming sessions at Hilltop Swimming Club. This month our Year 4 class will be attending St Alban's Harvest Celebration with another local school. During October, to support our healthy living campaign, the children will be participating in a fruit workshop and we'll be visited by a gym coach.

We'll be **performing our school play for the over-65s** in the village on Monday December 3rd at 2pm. Invitations will be sent out nearer the time, but please feel welcome to call or email us beforehand to let us know if you'd like to attend. We'll also be inviting parents who have children in the play and would like to bring their pre-school children too. Contact generaladmin@clophillstmarysschool.co.uk or call 01525 860206.

Our value for October is *Co-operation*

Co-operation is everybody's responsibility but takes courage and willpower to achieve. Co-operation requires us to recognise the unique role of every individual whilst keeping a sincere, positive attitude. Those who co-operate with others will find that others co-operate with them.

Acorn Nursery News

Mrs Donachie, our nursery manager, left us at the end of September to take on a new role. We thank her for all she has done and wish her well in her new role. The children have had a great start to the term and have settled in really well. We hope the new children, and their families, have a wonderful time with us. The children have been spending time settling into our routine, talking about expectations and they've been introduced to the nursery values.

Important information for parents with children moving to Middle School or requiring a Reception class place September 2019

Applications online: www.centralbedfordshire.gov.uk/admissions
Online applications preferred but hard copy applications are available from the school office.

Deadline for both Middle School Place/Starting School Place is 15th January 2019

We urge parents to make their applications ASAP and let the school office know if you have any questions or problems relating to your application. Contact Mrs Topliff on 01525 860206 or email generaladmin@clophillstmarysschool.co.uk



St Mary's Church,
Clophill

invite you to an

AUTUMN LUNCH

17th October

12 noon-2pm in the Church

£6 for 2-course meal

Everyone very welcome

Please reserve a place

Phone Carolyn 01462 815433 or Gill 01525 861058

Come into the Garden

with Kate Gardner



As we move into October, days have become shorter and there's a coolness in the air but our gardens can still give us a wonderful and colourful finale before winter descends. Many deciduous trees, shrubs and climbers put on a beautiful show before their leaves fall, and there are hips, berries and fruits to enjoy, along with plenty of flowers to keep the colour going right up until the frosts hit.

Acers put on a spectacular show as their leaves turn to deep magenta, purple or golden yellow. They can either be planted into the borders or make excellent container plants for the more shaded areas of the garden. **Dahlias will continue to flower** until the first frosts, particularly if you regularly deadheaded and feed them. With **cornus** (dogwoods), their leaves fall to reveal colourful winter stems from the deepest black through red to the palest green and yellow. Now is also a good time to take hardwood cuttings to make new plants for free.

Chrysanthemums have seen a revival in their popularity over the last few years, with plants available in a wide range of colours and heights. Pots of dwarf plants are readily available from nurseries and garden centres and can be used to add instant colour to beds, borders and seating areas.

Ornamental grasses are at their best in autumn. *Miscanthus sinensis* cultivars form large, dense clumps and showcase bright, feathery, narrow plumes that look superb in low autumn light. Standing tall (up to two metres) and upright through the whole of winter is an added bonus. For something smaller, try *pennisetum* (fountain grass), with its distinctive bottle-brush flower. These clump-forming grasses do best in full sun and look good throughout autumn, especially amongst herbaceous perennials such as Japanese anemones and sedums, which are flowering at the same time.



When it comes to **planting spring bulbs**, try something new and plant drifts of spring bulbs such as crocuses, dwarf narcissi and snake's-head fritillaries informally in your lawn. It's also a good time to be planting up containers – heathers, cyclamen, winter pansies and skimmia will provide colour and interest throughout the dark winter months.

If you've been enjoying the tropical feel from Cannas, now's the time to lift them to avoid frost damage, dry off the tubers and store in cool dark conditions until spring. It's also a good time to **lift and pot up any tender perennials**, such as chocolate cosmos, pelargoniums and fuschias, to protect them over the winter. If lifting and storing isn't an option, then leave in the ground where they've been grown, cut back the top growth to 10cm and protect the roots and basal buds with a thick layer of well-rotted manure or bark chippings. You still have time to **transplant any deciduous shrubs** that are in the wrong place, as well as plant new evergreen shrubs. The soil is still warm so that allows a good strong rootball to develop before the cold winter weather kicks in.

A NEW COMMUNITY TRANSPORT SERVICE

Connecting our Communities in



Greensand
Country

Are you over state pension age or have a disability that means you have limited mobility?

A new transport service allows you to travel around the area to shops and health services, visit friends and relatives, or just enjoy a day out.

Run by Bedfordshire Rural Communities Charity, the service costs an annual membership of £20 plus £2.25 or £3.75 per single journey, depending on how far you're travelling. Transport is available during the day Monday to Friday (not Bank Holidays) and can be booked a week in advance.

The service covers journeys to and from:-

- Ampthill * Clophill * Cranfield * Biggleswade * Flitwick
- * Houghton Conquest * Lidlington * Marston Moretaine * Maulden
- * Shefford * Shillington and all villages between and into Bedford

When you apply for membership we'll ask a few questions to ensure we understand your particular needs so that we can provide the best level of care. It also means we'll have the correct information should we need to contact you or your carers.

To find out more about the transport service and for a membership form please contact 01234 834933

Central
Bedfordshire

Connecting our Communities in Greensand Country is provided by Bedfordshire Rural Communities Charity, supported by and working in partnership with Central Bedfordshire Council.



The Autumn Ball

Saturday 20th October
The Cross Keys, Pulloxhill, MK45HB
7pm - Carriages at Midnight

Raising money for - Road Victims Trust, Keech Hospice &
Dine with me on the Street. & 2 local schools

Live Band & Entertainment, Drinks Reception, Raffle & a Three Course Dinner

Tickets £45 per person. To book please contact Meg
07771313041 / theautumnball@outlook.com



Keech
hospice care

**Dine with Us on the Streets -
Cherries Legacy**
(New with 50 on the Streets - Cherries Legacy)



Clophill & District Flower Club



Last month we gathered for the first demonstration in our autumn programme. Although sadly coming to the end of a long hot summer, we were encouraged to welcome in the **'Autumn Glory'** by Alan Smith, who has demonstrated and competed with great success at NAFAS events over many years and had travelled from Ipswich to entertain us.



Alan's designs were fairly traditional in style but illustrated how autumn arrangements need not be dull by the use of still plentiful garden foliage, autumnal seed heads, branches and grasses. These were skilfully combined to create a lush backdrop for bright and zingy orange and red gladioli, gerbera, roses, carnations, and seasonal Chinese lanterns.

Another design made use of rusty red hydrangea heads, bright pink gerberas, dahlias and lysianthus. Pretty gift wrapped boxes in matching colours enhanced the finished arrangement.

For Alan's next arrangement he combined lime green carnations and 'Anastasia' chrysanthemums with honeysuckle, seasonal sweet chestnut, ferns and ivy – beautifully presented on a piece of driftwood to create a rustic half-moon shaped 'bower', with two placements. This was followed by two more arrangements – one incorporating 'Anabelle' hydrangea heads, white roses and lilies on a gold figurine stand and the other a display of sunflowers, yellow roses and deep red gladioli on a tall iron frame.

Alan's jokes and chat were very entertaining, and he gave us **useful tips on helping blooms to stay fresh** – such as gerberas will last better in shallow, very clean water. He also told us that to prevent lily pollen stains on fabrics you should only remove the pollen-carrying anther, not the central stigma, or the flower will quickly die.

Joan Tarmu, Committee Member



- For information on upcoming demonstrations, go to www.clophillflowerclub.com

A big thank you...

The **Shefford Craft & Produce Show** was held last month and the committee would like to thank everybody who entered or visited and helped to make it a success. Entries were up on last year and it was lovely to see some new faces among the people taking part. Once again, we had some lovely exhibits, both from adults and children, and even though we didn't have the best growing conditions this year, we still had some very good entries amongst the garden flowers and produce.

Our committee is small and we wouldn't be able to put on the show without the help of a number of other people. We'd like to thank our judges, the people who helped us on the day itself and, last but not least, the individuals and groups who support us during the year. *Helen Allard*



Flittabus needs YOU!



Volunteer drivers wanted

Driving a Flittabus can be fun; it's also very worthwhile.

We have 3 buses and 11 routes, driven (and managed) by over 30 men and women volunteers, providing scheduled services around Central Bedfordshire. ANYONE can use Flittabus but most of all we help many elderly people to remain independent.

If you can spare just one or two half days a month we would like to hear from you. Why not come for a trial drive & see if you like it?

Full support & training provided (a car licence is normally OK)

Note: New drivers do need to be under the age of 67

**To learn more please contact Chris Tarmu on 01525 861940
Helpline for bus information 07960 388 111 or see www.flittabus.co.uk**

Charles Dawson: Piltdown and his other hoaxes

Monday 5th November, 7.30pm for 7.45pm

The story of Charles Dawson, a man so desperate for academic recognition that he routinely faked his archaeological finds in order to supply the 'crucial' artefact to the academic world. Piltdown Man in 1912 was Dawson's most famous hoax.

Speaker: Andy McGrandle, who has worked in the oil industry since 1977 after graduating from London University with a degree in geology.

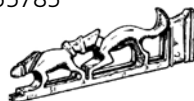
Lecture Theatre, Flitwick Library MK45 1QJ

£2 for members and £3 for visitors, payable on the door.

Further details: clive.makin@ntlworld.com Tel: 01582 655785

www.adalhs.org.uk

Ampthill & District Archaeological & Local History Society



Remembering Clophill's Fallen

Continuing our series of the centenary of Clophill's brave men who lost their lives in the First World war...

In October 1918 the friends and family of **Augustus Webb** learnt that he'd been killed in action on the 23rd whilst serving for the 2nd Battalion Bedfordshire Regiment in France. He was 29 years old. Augustus was born in Clophill in 1889. In 1911 he worked as a farm labourer and lived in Wood House, Beadlow, with his parents, Sarah and Henry, and siblings, including his younger brother, Herbert, who died two years before him and is also commemorated on our monument.

Augustus enlisted in November 1915, trained for eight months, and was sent to France in July 1916. Later that year he was hospitalised with rheumatic fever. He returned home from France, on leave, in December 1917. In March 1918 Amptill News reported that Augustus had 'arrived at home from convalescent home at Clacton-on-Sea, after being in hospital in London. He was sent from France suffering from a wound in the shoulder and trench feet'. Later that month it stated that he'd been badly wounded at Ypres and had been transferred from a convalescent centre to Amptill Command Depot.

By July 1918 Augustus had sufficiently recovered to be sent home on leave again before returning to duty. In September 1918 Amptill News reported that Augustus wrote home to say 'he has been over the top several times without receiving a scratch. The weather was ideal, and they were doing remarkable well. He was in the best of health and looking forward to victory'. In October it reports his letter home as: 'I have had some dreadful hard fighting for more than a month, and been over the top several times. I am, however, thankful to say that I got through it all quite safely, with the exception of a slight bayonet



wound in my right arm. I am out of the front line now for a time, and having a much desired rest.' He died later that month and is commemorated in the Highland Cemetery, Le Cateau, Nord, France.

The 2nd Battalion was engaged in the war for 49 months. One of their last major battles was to be the Final Advance in Picardy, when

they were engaged during the Battle of the Selle in October 1918. The battle consisted of several attacks, resulting in many gains constituting a highly significant British victory – considerable advances were made and over 20,000 prisoners taken.

Can you help?

As the centenary of the ending of the Great War draws near we're gathering information on those who lived in Clophill and served in WW1 and survived. If you have a photo of someone who fits this category then we'd be very grateful if you'd let us take a copy – or better yet, if you could email it to us. The information will form part of a display that we plan to provide as part of the Remembrance event to be hosted at the Eco Lodges on 10th and 11th November. We look forward to hearing from you. **Sue and Richard Pearson**

Contact: richard.sue.pearson@gmail.com or phone 861110



What is it?

Scam mail is illegal mail

Scam mail targets
the most vulnerable

Scam mail is not normal
advertising mail.

What to look out for

Is someone you know receiving
a large amount of mail?

Are they sending money in
response to this mail?

If so, they could be a target
of scammers.

Contact: Royal Mail scam mail team on 0800 0113 466
scam.mail@royalmail.com FREEPOST SCAM MAIL



Bedfordshire
Cambridgeshire
Northamptonshire

Wildlife walks & talks



Fungal Foray

Sunday 28th October, 10am-12.30pm, Flitwick Moor

Hoping for a mix of damp and mild weather to guarantee a good showing of mushrooms and toadstools. Alan Outen will help you identify your findings and tell you more about the wonderful and sometimes weird world of fungi.

Walks have group size limits so please reserve your place.

For additional information and to reserve walk places please email flitvale.info@gmail.com or ring Ann on 075801 78889 between 6pm and 8 pm or at weekends. www.flitvale.org.uk

What's on in and around Clophill

OCTOBER		Saturday 20th The Autumn Ball 7pm, The Cross Keys, Pulloxhill <i>See this issue for ticket details</i>
		Friday 26th Hamlet 6.45pm-7.30pm, Open Air Theatre at the Old Church. Tickets, £7 www.clophillecolodges.org.uk/events
		Saturday 27th Pumpkin Festival noon-4pm, Eco Lodges www.clophillecolodges.org.uk/events
		Saturday 27th Hamlet 6.45pm-7.30pm, Open Air Theatre at the Old Church. Tickets, £7 www.clophillecolodges.org.uk/events

NOV		Saturday 3rd Fireworks Night 7.15pm, St Mary's School <i>See this issue for full details</i>
-----	---	---

On throughout the month...

Wednesdays...

- **Tea and Chat** 10.30 to noon, Methodist Church

Fridays...

- **Clophill Toddler Group** 10am-11.30am, Village Hall, See 'Village Groups' for contact details

One Saturday a month...

- **Messy Church** 4pm-6pm, Clophill Methodist Church. Dates: 20 Oct; 17 Nov; 15 Dec. See 'Village Groups' for contact details.

CHURCH SERVICES

Regular services at St Mary's Church, Clophill

1st Sunday	8am, Holy Communion; 10.45am, Family Praise
2nd & 4th Sundays	10.45am, Parish Communion
3rd Sunday	10.45am, Morning Prayer/Praise
5th Sunday	10am, Benefice Services

Regular services at Clophill Methodist Church

1st, 2nd, 4th, 5th Sundays	10.30am Morning Service
3rd Sunday	10.30am All Age Worship Service

If you have any diary dates that you would like included on this page, please email clophillspotlight1@hotmail.co.uk

Parish Registers for October

1818

Marriages

Oct 24 Thomas Lomas to Lucy Kedge

1868

Baptisms

Oct 4 Sarah Sharman
Sarah Herbert, mother,
a single woman

Marriages

Oct 31 John Gudgin to Ann Stimson

Burials

Oct 7 Elizabeth Willison, 49

1918

Baptisms

Oct 20 Molly Victoria Ashley

Marriages

Oct 5 Frederick Sharman to
Harriet Denton

Burials

Oct 14 George Whittamore, 89
Oct 21 Stillborn child of Mrs Lawrie

1968

Baptisms (at Silsoe)

Jason Paul Stringer of Flitwick

ST MARY'S REGISTERS FOR OCTOBER

Funeral Oct 4 (Reginald) Roy Burgoine

These notes are a resume only. Official minutes are available on the internet and notice boards. All official correspondence should be sent to the parish clerk and not individual councillors.

Water works

It seems a long time ago now since our council meetings were dominated by conversations about the Anglian Water roadworks. Clophill Parish Council are keen to publicly show our gratitude to Anglian Water for prioritising the improvements of our water pipes and, almost surprisingly, finishing the work on schedule! We appreciate that the work carried out did cause a significant disruption for many in the village, but we also remember the regularity of the pipes bursting in previous years, too – hopefully those days are now behind us.

Teen-shelter at rec

The long-awaited teen-shelter should now be open in our rec ground. This development came after a group of teenagers made contact with the council and asked for our help. Although we can't promise to have a solution every time, we're always happy to hear from villagers who have ideas on how we can improve village life – so don't be afraid to speak to us.

Report a pothole

If you want to raise an issue with Central Bedfordshire Highways team, go to the Report-it website at www.cb-report-it.co.uk. There you can report potholes, failed street lighting, even apply for a dropped curb. Best of all you can track your problem online with a reference number.

Footpath improvements

Clophill Parish Council are contemplating spending some public funds on improvements to the footpath on High Street, from the alleyway near the old Post Office through to No 77. We've received many complaints about the gradient of the path – people pushing buggies and pushchairs were struggling to keep off the road. If we carry out the improvements, we'd look to do it properly, with any new path being suitably topped with aesthetically-pleasing gravels. If anyone in the village feels strongly for or against us starting this work, we'd be delighted to hear from you – you can email terry.lee@clophill-pc.gov.uk or respond to our post on the matter on our Facebook page: facebook.com/clophillparishcouncil

Parish Council Vacancy

We're still looking for someone to join our Parish Council. The role, which is unpaid, involves attending monthly meetings and spending an hour or so a week reviewing and responding to information. Training will be given. For more info and an application form contact James Stirling at clerk@clophill-pc.gov.uk or write to him at 31 Plum Tree Road, Lower Stondon SG16 6NE. You can also view information at www.clophill-pc.gov.uk

- Full minutes from meetings can be found at clophill-pc.gov.uk

Planning

CB/18/03076/LB

Location: The Smithy, Brickwall Farm, Kiln Lane

Proposal: Listed building: removal of internal blockwork partitions, insertion of conservation roof windows, removal of rear windows to form double door opening.

SUPPORT

Clophill Parish Council

Continued

CB/18/02892/FULL

Location: Paradise Farm, The Causeway

Proposal: Permission is sought for consent for resurfacing of land. The application is part retrospective. Objections include: outside the Village Envelope; erosion of the rural character of the location in the countryside; no detail on how foul water is disposed off and whether Drainage Board have been contacted; previous planning conditions have been ignored.

OBJECT

CB/18/00862/FULL

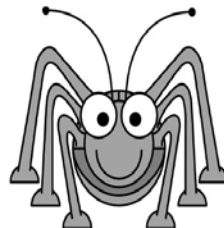
Location: Beadlow Manor Hotel And Golf Club, Ampthill Road

Proposal: Change of frontage, updated traffic and ecological survey. This is a minor update from the original application for demolition of existing hotel and erection of new 109 bed, three-storey hotel, 109 space car park, amended internal road layout, attenuation basin, landscaping and associated works.

SUPPORT

The next Parish Council meeting will take place at the Village Hall
at 7.45pm on Tuesday 30 October

**CLOPHILL
METHODIST
CHURCH**



BEETLE DRIVE

Saturday 24th November, 6.30pm

Adults £5, children £2.50

Refreshments



In aid of Clophill Methodist Church

Tel: 01525 860695



Useful numbers

Gas (Emergency)		0800 111999
Electricity (Emergency)		0800 7838838
Emergency Fire/Police/Ambulance		999
Water/Sewage (Anglian Water)		0845 7145145
Telephone	(Customer Services) 150 (Faults)	151
Highways Department (Central Bedfordshire Council)		0300 3008049
Benefits Agency (Bedford office)		01234 361500
Registrar's Office (Births/deaths/marriages)		0300 3008089
Rail (Enquiries)		0845 7484950
Buses 01234 262151	(Link A Ride) 01525 840511 (Flittabus)	01582 406561
Luton Airport		01582 405100
Swimming	(Flitwick) 01525 717744 (Robinson Pool)	01234 212479

LOCAL GOVERNMENT

Central Beds Offices (Chicksands)		0300 300 8000
Mid-Beds MP	Nadine Dorries	01462 811992
Central Bedfordshire Councillors	Michael Blair	01525 404513
	Paul Duckett	07988 184061
Clophill Parish Council	Paul Downing	01525 860350
	(Clerk) James Stirling	01462 887226

HOSPITALS

Bedford (North & South)	01234 355122	Admissions	01234 261150
		Appointments	01234 359012
Luton & Dunstable			0845 1270127

DOCTOR'S CLINICS

Amphill	(Houghton Close) 01525 300898	(Oliver Street)	01525 631395
		(Greensands)	01525 631390
Shefford	Enquiries 01462 818620	Appointments	01462 810034
Barton 01582 528700		Flitwick	01525 715300

POLICE

County Police HQ	Non Emergency	101
Amphill Station		01234 841212
		101

CHURCHES

St Mary's Parish Church	Revd Dean Henley	01234 381235
St Francis RC Church, Shefford	Ian Gordon	01525 860875
Clophill Methodist Church	Jim Davies	01525 860829
Baptist Churches (Amphill) Doreen Gibbs 01525 862424	(Maulden) Ian Crawford	01525 634325
	(Shefford) Hazel Arnold	01462 812564

SCHOOLS

Clophill St Mary's C of E Lower School & Nursery (Headteacher Mrs K Bingley)	01525 860206
Harlington Upper School , Harlington	01525 755100
Preschool clophillpreschool@gmail.com (Chris) 07936 006381 or (Imogen)	07765 887868
Redborne Upper School , Amphill	01525 404462
Robert Bloomfield Middle School , Shefford	01462 628800

Village groups

Beverley Court	860920
Brownies	https://enquiryym.girlguiding.org.uk
Clophill Community Care	Duty Contact 07791 773705
Clophill Heritage Trust	Ali Bradbury 07894 710001
Clophill St Mary's C of E Lower School & Nursery	Sharon Kempson 860206
Clophill Toddler Group	Hannah Compton 07535 705711
Clophill United Charities	Gillian Hill 860539
Conservation Group	Brian Adams 862297
Flower Club	Gillian Hill 860539
Friends of the Cheshire Home	Sue Pearson 861110
Funzone After School Club	07903 167493
Greensands Community Choir	Luke Howard 07975 520085
Indoor Carpet Bowls	Tony Meredith 860754
Messy Church	Victoria Higgins 07920 568861
	victoriajhiggins@hotmail.co.uk
St Mary's PTA	Julia Skelton 07774 993973
Scouts and Cubs	www.scouts.org.uk/get-involved
Tea and Chat	Anita Errick 860695
Village Hall Booking Secretary	Marilyn Browning 07821 643936



PETER SHARPE BUILDING SERVICES LTD

**Call us first for ALL your building works
and get reliability, quality & sensible prices.**

- Domestic extensions
- Design & build service
- General building works, drives, patios
- Carpentry, kitchen fitting, wall & floor tiling
- Laminate flooring & hardwood flooring
- Mini digger and driver hire
- Electrical installations including Building Regulation part P certification
- Roofing repairs carried out
- Conservatories, UPVC windows

‘BEDFORDSHIRE’S PROFESSIONAL BUILDER’

01525 872762 / 07850 803021

email: psbsltd@btconnect.com

the café

AT

W&H PEACOCK
AUCTIONEERS & VALUERS

Visit
www.peacockscfe.co.uk
for more details and to view
our current menu.

Eastcotts Park, Wallis Way,
Bedford, Bedfordshire
MK42 0PE

01234 266 366



**View the salerooms for our upcoming auctions
and then relax with a coffee and a slice of cake.**

Our unique café in Bedford Auction Centre with free wi-fi and
views of the salerooms, comfortably seats over 100 customers.

We serve cooked breakfasts, paninis and sandwiches, light
lunches and snacks plus a range of hot and cold drinks.

Senior Citizen discounts available

Open Monday to Thursday from 8.30am - 3.30pm
Extended opening on Friday to 7pm. Saturday 8.30am - 4pm
(Last orders 1 hour before closing)

20% discount
on your first visit with this advert



Opening Times

Sunday/Monday Closed

Tuesday/Wednesday
9.30am - 4pm

Thursday
9.30am - 7pm (Summer 8pm)

Friday 9.30am - 6pm

Saturday 8.30am - 4pm

Children's Corner

Lots of free parking

First Sunday of the month open for
special needs (Autism) appointments only

Route 66 Barbers, 22 High Street, Silsoe, Bedfordshire MK45 4EP Tel: 07813 145112



be hot!

with
Slimming World

TUESDAY

Silsoe

Silsoe Community Sports Centre
Chestnut Avenue, MK45 4GP
5:30pm & 7:30pm

Tel / Text: Liz for details
07973 532793

slimmingworld.co.uk

0344 897 8000   



Welcome to Clophill St Mary's C of E Lower School and Nursery

A small, friendly, Voluntary Aided Church of England Lower School, graded 'Outstanding' by Ofsted, with close links to the local community.

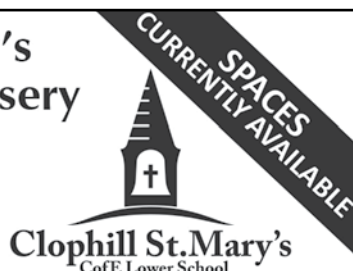
St. Mary's is a Values based school taking children aged from 2 years 7 months to 9 years and providing them with a framework for living, tightly woven into the positive Christian ethos of the school.

Breakfast and after school care for all ages.

Acorn Nursery

for preschool children aged 2 years 7 months to 4 years with breakfast and after school care available.

Providing 30 hours free childcare entitlement.



Clophill St. Mary's
CofE Lower School



**NEW NURSERY BUILDING
OPEN NOW!**

To arrange a visit, please call us 01525 860206
or email: generaladmin@nursery@clophillstmarysschool.co.uk
For more information visit: www.clophillstmarysschool.co.uk

Painter and Decorator

Call Chris : 07950714579



*do you want your
home brightening up?*

all interior & exterior work

no job too small!

free no obligation quote

*25 years experience
& fully insured*

facebook: @christopherthepainter
email: chris.minihane@btinternet.com

Nicola Rayner Fitness

fitone@live.co.uk 07801 510988



Pilates

**Men's Core
Strength**

HIIT Circuits

Book your space!

Classes in Flitton, Silsoe & Clophill

Boxworx

Legs, Bums, Tums

Ladies Boot Camp



TALKEASY Coaching

***Do you want to make a fundamental
difference to your life and don't
know where to start?***

My name is Lynn and I am a Life Coach.

I have extensive experience helping
with every aspect of life, e.g. support with
family issues, or your own financial,
emotional, or physical wellbeing.

My most recent project has been supporting
young teenagers in their place of education.

Be the change in your life
and contact me for a free,
no obligation chat.



07557948644

01525860384

lynncllements87@gmail.com

Tammys' Talons

Nail Technician

Gel. Manicure and Pedicure

IZABELLEHAMMON
NAIL TECHNICIAN
CALGEL IZ nail

Tammy Kirby

Clophill, Bedfordshire, MK45 4AW

Tel : 07968379309

tammystalons@gmail.com

Linda Allsop

PHYSIOTHERAPY



Chartered
Physiotherapist
with over 30 years
experience in both
the Private Sector
and the NHS.

01462 711978 | 07989 257026
www.linda-allsop-physio.co.uk

USING PARABEN & SULPHATE FREE, 100% VEGAN,
CRUELTY FREE PRODUCTS



A Cut Above Hairdressing

by Rachel

In the comfort of your own home
cutting & styling specialist

call or text : 07896009382
facebook: acutaboverachel

Salon experienced
Fully insured
Fully qualified to Level 3 Standard.

PERSONAL DOG WALKER

£10 per hour
£7 per half hour
£6 per visit

- First Aid Certified
- Insured



Text or call Corrane on
07576 473373 or **01525 630740**
 Corrane's personal dog walking



Professional friendly accountancy services

Fully qualified,
Free initial consultation,
competitive fees
Sole traders, Ltd companies,
bookkeeping, payroll,
CIS, VAT & Tax.

sally@sjtax.co.uk
01234 831997
07899 808592

GCC
Greensand Community Choir
LOVE SINGING!
sing with an exciting local choir...



Come along to your local **community choir**,
for men and women of all singing abilities!
Mondays, 8.00-9.30 pm at St. Mary's Church, Clophill.

- Come and sing with an exciting new local choir led by a professional musical director
- Uplifting music in a variety of styles: musicals, classic pop, folksongs, sacred and world music
- Welcoming singers of all abilities - no audition, no need to read music!
- New members - come along any time for a free taster

Enquiries to:

greensandcommunitychoir@gmail.com

or ring Luke on: 07975 520085

Telephone
**01525
860526**

The Stone Jug

A Free House
BACK STREET, CLOPHILL

We're a traditional village pub, offering home-cooked lunches that will fill your bellies without emptying your wallet!

Make 'The Jug' part of your weekly routine – for lunch, a catch-up with friends over a drink or perching at the bar chewing the fat and putting the world to rights. As my late dad used to say 'We're a proper pub for proper people.' Cheers!

- 5 real ales, including 3 guest pumps
- selection of wines and Prosecco by the glass (or even better, by the bottle!)
- home-cooked lunches Tues-Sat, 12-2pm



REMEMBER OUR MOTTO

"A VISIT TO THE JUG IS BETTER THAN GOING TO A PUB"

CHEERS JOYCE & VIKKI

www.stonejug.co.uk

www.facebook.com/thestonejugclophill



Compu-Doc

PC / laptop crisis ?

01525-402227

Call the Doc for -

Hardware & software

Diagnosis & treatment

john.stafford@compu-doc.co.uk

OVENCLEAN.

The original oven cleaning specialists

All types cleaned:



- Ovens
- Grills
- Ranges
- Hobs
- AGAs
- Microwaves
- BBQs
- Extractors

Fully insured, and DBS Police Checked

For a quote call Clive direct on:
07949 233089 or phone the Office on 0800 840 7127



www.ovenclean.com



Ovenclean Clive Burgess

Warm Property Services



Heating



Plumbing



Bathrooms



Maulden based. British Gas trained engineer with more than 10 years' experience. Discount for over 60's.

Free no obligation quote & advice.



Boiler and heating installations



Power flushing



Landlord Safety certificates



Bathroom suites



Plumbing and drainage



Fires and cookers

07716 478794 01525 839342
www.warmprops.co.uk

THE BLUECAT



Tel: 01525 861416
www.thebluecat.net

Find us on Facebook @thebluecatcattery
or email us at enquiries@thebluecat.net

The Bluecat is a luxury cattery set in the quiet area of Jacques Lane in Clapham. With just 14 cat chalets, we have time to fuss, pamper and play with your cat to its heart's content whilst in our care. Please call for further information.

Misty Double Glazing?

Over 30 Years experience. FREE Quotes

Over 30 Years experience. FREE Quotes

**KEEP YOUR WINDOW FRAMES...
... WE JUST REPLACE THE GLASS!**

• UPVC • Aluminium • Or Wood

Because we replace just the glass the repair is a
Fraction of the cost of a complete replacement window.

BEFORE



AFTER



mistydoublinglazing.co.uk
QUALITY GLAZING SERVICES

01525 876808

WE ALSO REPLACE BROKEN...

• Glass • Handles • Hinges & Locks
AND REPAIR...Patio Doors & Conservatories!

**Team
Select**



**JOIN US
INSTORE**

**FIRST CLASS
HOLIDAYS**

*Providing tailor-made
holidays & winning the
"Best Operator to Canada"
award a record 15 times.*

**Team
Select**



Whether you are a first-time visitor or you've been before, prefer to be with a group or are a free spirit, **First Class Holidays** have something to suit your needs.

Select Travel Holidays are pleased to be joined by
our preferred partner **First Class Holidays**

DATE: Wednesday 7 November 2018

VENUE: Our shop in Mill Street, Bedford

Join us on the day to receive special offers

Places will be limited for this exclusive event

REGISTER YOUR INTEREST TO FIND OUT MORE

01234 819435

24 Mill Street, Bedford MK40 3HD

sales@cruiseselect.co.uk
www.selecttravelholidays.co.uk
www.cruiseselect.co.uk



BOOK WITH CONFIDENCE
ABTA & ATOL protected



ARCHITECTURAL DRAWINGS AND BUILDING DESIGN SERVICES

Professional Architectural design services provided for all types
of private residential building projects including extensions, loft/
garage conversions, garages and outbuildings through to new build
dwellings with all necessary council approvals obtained.

For free estimates and advice contact Steve
Coates on Flitwick 01525 862457 or 07960 215053.

stevecoates72@gmail.com

S & S Coates Surveying & Design, Unit 4 The Courtyard,
r/o 13 High St, Clophill, MK45 4AB.



CBuildE
chartered building engineer



LOCAL INDEPENDENT LOCKSMITHS




SECURE YOUR EMPIRE

- ✓ NO CALL OUT CHARGE
- ✓ NO CALL CENTRES
- ✓ DBS/CRB CHECKED
- ✓ UPVC, WOODEN AND ALUMINIUM SPECIALISTS
- ✓ FULLY INSURED AND ACCREDITED
- ✓ LOCKS SUPPLIED TO BS3621



O.A.P. DISCOUNT AVAILABLE

 FOR A FULL LIST OF OUR SERVICES AND SECURITY ADVICE
PLEASE VISIT WWW.EMPIRELOCKSMITHS.CO.UK

 01525 450540  07983 520326

E.T. Accountancy Services

Experienced Chartered Accountant and Chartered Tax adviser based in Clophill providing a full range of accountancy and taxation services to businesses and private individuals.

To arrange a free initial consultation please telephone me on 01525 590465 or email emma@et-accountancy.co.uk

*Chartered Accountant and
Chartered Tax Adviser*

Emma Thoulass FCA CTA
www.et-accountancy.co.uk
01525 590465

David Carpenter BUILDING SERVICES

*Friendly local craftsman
and restorer Est. 1986*

MOST BUILDING WORK UNDERTAKEN

including Carpentry and Joinery,
Bricklaying, Roofing, Plastering,
Tiling and much more

Phone: 01582 881015
Mobile: 07954 828695
to arrange a visit to
discuss your requirements.

Free estimates provided
References available

Happy Pets at Home

*Caring for your pets in your home
when you can't be there*

Visits available from 7am to 8pm
including Bank Holidays



Now taking bookings for
Christmas & New Year



From Saturday 22nd December
to Sunday 6th January inclusive
With a present for your pet from 'Santa Claws'
for all Christmas Day visits booked

DBS checked and fully insured
Based in Barton and have pets of my own

Email
petvisitsatyourhome@aol.co.uk

Phone June on
07950704980 or 01582 881482

Hairs & Graces

Unisex Salon



Wet Cut £19
Cut & Blow Dry £30
Colours start from £27
Special OAP rates

Opening Hours:

Monday	9.30-2.00
Tuesday	9.30-5.00
Wednesday	9.30-5.00
Thursday	9.30-8.00
Friday	9.30-8.00
Saturday	9.30-4.00

Zoe, Donna, Gemma
and Amanda look forward
to welcoming you.

Ring now to book an
appointment.
Appointments also
available with our Barber.

Burgoine Business Centre, 117 Clophill Road, Maulden MK45 2AE

01525 861491 • Loads of free parking



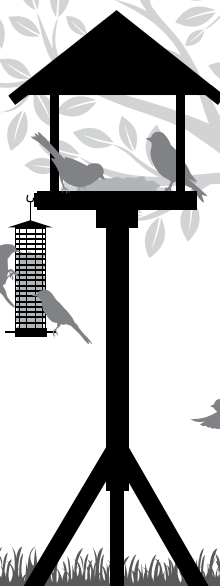
BritBits

Unique quinoa & suet bird pellets

- ✓ **Attract** more birds
- ✓ **Direct** from our farm
- ✓ **No Waste** – No grow
- ✓ **British** home grown ingredients
- ✓ **Super feed** includes Blackcurrant & Quinoa



Britbits are
so versatile -
they can be put
on the ground,
table and feeder!



LOCALLY MADE

To order go to www.ivelvalleybirdfood.co.uk

YOUR LOCAL BIRD FOOD SUPPLIERS - Use code LOCAL5 to save £5 off your first order

A L & G ABBOTT

Funeral Directors

~ Established 1832 ~

WITH YOU WHEN IT MATTERS MOST

An independent family business continuing to provide a caring & professional service to Bedford, Kempston & the surrounding villages.



- 24 Hour Personal Service
- Pre-Paid Funeral Plans
- Private Chapels of Rest
- Green Burials
- Home Arrangements
- Civil Services Available



T 01234 843222

www.abbott-funerals.co.uk

support@abbott-funerals.co.uk

150 BEDFORD ROAD, KEMPSTON, BEDFORDSHIRE, MK42 8BH

AIMS

Tim Kemp BA FCA
Top Barn Rectory Road
Steppingly MK45 5AT

TEL/FAX : 01525 717141
MOBILE : 07900 823 012
www.aims.co.uk
e-mail: timk@aims.co.uk

- ◆ **Professional** service providing for all your accounting and tax needs
- ◆ **Practical** advice based on 20 years experience in **running** businesses
- ◆ **Personal** approach with fixed fees relevant to the work **you** need
- ◆ **Friendly, local** accountant supporting the community for over 20 years

Please call for a free, no-obligation initial meeting

ACCOUNTANTS FOR *business*

Hills-Howson Financial Services

Financial adviser appointments available in your home or our office

The Old Post Office
53 High Street
Claphill
Beds MK45 4BE

Tel: 01525 861803
www.hills-howson.co.uk
hills.howson@btconnect.com

Including:-

Investments

Pensions

Protection

Annuities

W&H PEACOCK

AUCTIONEERS & VALUERS

Auction Sales and Valuations

Valuation, collection & auction service
of individual items through to complete
property and commercial clearances.

Call for a free no obligation collection quote
or email info@peacockauction.co.uk

SALE ENTRIES NOW INVITED

Eastcotts Park, Wallis Way, Bedford MK42 0PE

01234 266 366 peacockauction.co.uk



THE COMPUTER MAN



Got a problem with your computer and don't know what
to do? Suffering with a virus or spam?

Don't hesitate! Ring your local computer expert

**Remote repairs or home visits
(Day, evening & weekend)**

**Lap top/desk top loan
(Free pick up & drop off in local area)**

Comprehensive health check from £35 (**Special Offer** £35 - normally £40)
Refurbished fl at screen available from £15 • Refurbished base units available from £99



Contact Stephen Amos

07976 718567

the.computerman@ntlworld.com





rincontuition - Spanish & Maths

Expand your knowledge. Boost your confidence

Phone 01525 860743 Mobile 07952 667814

Exam techniques and preparation. Revision and practice papers: SATs, 11+ and GCSEs

Spanish for business or pleasure, all levels. GCSE & A-levels

Skills development: conversation, reading and writing

Maths: Boost your confidence and abilities

KS1, KS2, KS3, SATs, 11+ and GCSE practice papers.

DBS checked and references - Reasonable rates

01525 860743 - 07952 667814 rincontuition@aol.com

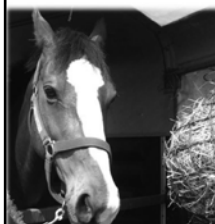


LIZZIE BROWN PET CARE & HORSE GROOM SERVICES



**DOG WALKING
PET POP-IN & FEEDING
PET/HOUSE SITTING
EQUINE GROOM***

(*BTEC Cert Equine Management)



Lizzie Brown 01525 862459 / 07500 989 700

Reliable friendly local service

Short notice available (no contract commitments)

Insured Quality references available CRB checked*

*(Disclosure & Barring Service)

Baths, Toilets &
Showers
Sinks and Taps
Guttering
Leaks and Burst Pipes
Drainage
Handyman jobs also



Silsoe based
No call out fee – free estimates
Fully insured and guaranteed
No job too small
07720 723653 01525 864859
info@betaplumbing.co.uk
www.betaplumbing.co.uk

Foot Health Practitioner

Corns, Hard Skin, Verruca, Fungal Nail Infection,
In-growing Toe Nails, Diabetic Foot Care, Athlete's Foot,
Pedicure, General Nail Cutting etc.

In the comfort of your home or at my clinic

Ann Gibbons MCFHP, MBAFHP.

Competitive Rates

Tel: 01462 813252 Mob: 07872 315763

Web: www.shamrockclinic.co.uk

For opening hours and other details please refer to my website



GARDEN DOCTOR

Rob McLeod
Pruning Specialist

Professional, Local, Experienced

- * All tree and hedge work undertaken
- * High standard of work
- * Rubbish cleared from site
- * Free Quotations
- * Local, reliable service you can trust



Tel: 07763 239340 or 01525 861568
email: garden.doctor@btinternet.com

Tree Surgery & Removal
Shrubs & Fruit Trees
Pruning & Spraying
Fully certificated and
insured

Call the Garden Doctor and bring Good Health to your Garden



We'll get you up and running!

We offer the very best physiotherapy care from a friendly approachable team of nine highly trained Chartered Physiotherapists all members of the Health Professionals Council

Expert treatment including:

Neck/Back/Hand and Tennis Elbow Pain
Headaches/Migraine/Sciatica
Incontinence/Pelvic/SIJ/SPD/Pregnancy Back Pain
Sprains/Strains/Torn Ligaments
Whiplash/RSI/Osteoporosis/Sports Injuries

Specialist Physiotherapists:

Neurological, Paediatric, Vertigo and Dizziness

We also offer complementary treatments:

Acupuncture, Reflexology, Massage, Indian Head Massage,
Chinese Herbalist, Lymphatic Drainage and Pumps



Tel: 01525 720882 www.chartered-physiotherapy.co.uk Email: amphillphysio@btconnect.com

7 Station Square, Flitwick, MK45 1DP



The Happy Place.co.uk

On the Green beside the Post Office every Friday, 3.30-7.30pm

We are your local mobile fish and chip van, we have been parked on the green every Friday for the past 6 years. We serve only the highest quality produce, cooked fresh to order and served to you by our friendly staff.

Why don't you pop down and come and Try Our Fry!

To avoid waiting in the cold, give us a call to

place your order on: 07833 786108

A big thank you to all our customers who have loyally supported us over the past couple of years.

Chapman & Kirby Heating

Gas, Plumbing & Heating Installations

Gas Safe Registered

Boiler Servicing & Maintenance



Call us now

Tel: 01525 861255 Mob: 07831 132308

Email: info@chapmanandkirbyheating.co.uk

1C, Old Silsoe Road, Clophill, Beds., MK45 4AR

NEVILLE

FUNERAL SERVICE

Established 1875

Reassurance when you need it most

Serving the people of Bedfordshire since 1875



Neville Funeral Service

inc. George Squire & Sons since 1976

24 Clifton Road

Shefford SG17 5AE

t: 01462 813258

e: shefford@nevillefuneralservice.com



Neville Funeral Service

The Old Church Flitwick Road

Amptill MK45 2NT

t: 01525 406132

e: amptill@nevillefuneralservice.com



www.nevillefuneralservice.com






If you've been thinking about enjoying a great lawn this year – green, lush and weed-free, why not contact us today and let us bring your lawn to life.

We provide four seasonal treatments, as well as beneficial treatments to keep your lawn in tip-top condition - prices start from just £5* per month.

PRICES FROM
£5*
PER MONTH

Ask us about our annual plans, which allows you to both spread the cost and save up to 25%.

GreenThumb
LAWN TREATMENT SERVICE

Simply call: 01234 709345 or
visit: greenthumb.co.uk   

*Based on a lawn size of 40m²



EST.
1989

- Suppliers of traditional and modern equipment
- Working whirlpool & spa baths, power & steam shower systems on display
- Over 40 settings on display
- Complete installation service if required
- Personal friendly service from a family run business
- Wall and floor tiles
- Accessories
- Mirrors
- Bathroom furniture
- Heated towel rails
- Saunas
- Bathroom cabinets

SHEFFORD 01462 627002

www.bathroomvogue.com

Unit 4A, Shefford Industrial Park, St Francis Way, Shefford SG17 5DZ



Tel: 07966 665654

Web: www.emtacademy.co.uk
Email: carrie@emtacademy.co.uk



ASSOCIATION OF FIRST AID AND HEALTH & SAFETY TUTORS

EMT Academy – Emergency Medical Training is a Clophill based First Aid Training company

All EMT Academy trainers have worked professionally as Emergency Medical Technicians, Paramedics or Police Firearms Medics so we can bring real life experience and scenarios to your course.

Courses Available

- First Aid at Work
- First Aid at Work Requalification
- Emergency First Aid at Work
- Annual Refresher
- Automated External Defibrillator
- Family First Aid
- Paediatric First Aid
- Basic Life Support
- Bespoke First Aid*

Our feedback shows that the one-to-one practical skills taught by our instructors ensure students feel confident to deal with any unexpected medical emergency.

If you are a parent, grandparent, babysitter, childminder, carer, employer or an organisation* e.g. sports clubs, Guides/Scouts, equestrian, please contact us, we will be happy to discuss which course will best suit your needs.

LOCAL ALLOY WHEEL REFURBISHMENT



Tel:
01525
860069

Alloy Wheel Repairs

Diamond Cut Alloy Wheels Repaired On Site

Powder Coat Primers & Lacquers

Fast Turnaround Alloy Wheel Welding

Tyres At Competitive Prices

NEW for 2015 - 4 Wheel Alignment Service

www.mintalloys.co.uk

Hire Clophill Village Hall



Wedding Receptions
Birthdays & Special Occasions
Dances and Discos
Club & Community Meetings & Activities

Phone: 07821 643 936

Mail: Clophill.villagehall@gmail.com Web: www.clophillvillagehall.co.uk

Ads from as little
as £50 per year

To see your business advertised here, please contact our
Advertising Manager at ads@clophillspotlight.co.uk

Conifer
Kennels

Quality
BOARDING
DAY BOARDING
HOLISTIC FOOD SHOP
GROOMING & GOING HOME BATHS
OFF SITE NATURE WALKS
QUALIFIED TEAM



nutriment
ENHANCED raw diet formula

www.coniferkennels.co.uk 01525 860339



The Causeway, Clophill, Beds. MK45 4BA

Akela
WILD WASH

YAKERS

SKIPPERS

Eden
Holistic Pet Food

GREEN & WILDS
Naturally for pets

Pre-Order
Service Available

Get fitter with Sally

Tone up for summer

Pilates with me is varied, fun and highly effective. Regardless of your fitness level or age you can tone your body, enhance your fitness: feeling stronger and more resilient.

Choose from

Small local classes (max 8 clients) allow a more personalised approach: you will not be left behind or left out!!

Private sessions in your home or at my studio. After an initial consultation, I will tailor a programme to your needs and goals. You'll feel so much better after just 3 sessions.

Also

Deep tissue (Sports) or relaxation massage you will feel great and move more freely



Book your consultation or find out more

Contact Sally@equifit.me.uk or call 07765 240354



BURGLAR ALARMS

New Alarms Fitted or Upgrade Existing Alarms

BURGLAR ALARMS

We fit New Alarms - Wired or Wireless Systems
We can service and maintain your existing alarm

CCTV

We fit high quality systems to maximise your security.
Access your CCTV via the internet or mobile.

DOOR ENTRY

We fit a range of quality video and audio intercoms
to suit your needs.

*We are a family run business with over 35 years
experience in home security and crime prevention.*



www.maximumsecuritysystems.co.uk

Contact:

01582 864138 / 07746 111520

For a free quote and consultation

Root 'n Branch

Your Local Friendly & Reliable Gardener

All aspects of Garden Maintenance undertaken
• PRUNING • MOWING • WEEDING • PLANTING • HEDGING

Southfields, Shefford
email: whooley@hotmail.co.uk

Tel: 07771 537385

Public Liability
Insured

ADAM IN YOUR GARDEN

**TREE SURGERY, HEDGE TRIMMING,
TURFING, FENCE MAINTENANCE,
DECKING, PATIO CLEANING**



Qualified, Fully Insured, Competitive Rates
Free Estimates

TEL: 01582 518954 MOB: 07828 490360

Web Site: www.adaminyourgarden.co.uk

ANDREW BAKER WINDOWS

9 SHEFFORD ROAD
CLOPHILL BEDS
MK45 4BT

SPECIALISING IN UPVC WINDOWS,
DOORS, CONSERVATORIES,
FASCIA, SOFFITS, GUTTERS AND
CLADDING. ALSO AVAILABLE FOR CARPENTRY
WORK. NO JOB TOO SMALL OR LARGE.

20 Years experience.
Free local quotes.

FENSA

Fensa Registered
FIVE YEAR GUARANTEE

Contact Andrew: **01525862804 / 07825017855**

Email: **abakerwindows@gmail.com**

HIGH QUALITY CARPET, UPHOLSTERY, RUG AND LEATHER SUITE CLEANING

Using Eco-Friendly Products

Ring Steve

(Barton) **01582 882620**

(Mobile) **07769 042523**

Email: bedscarpetcleaners@gmail.com

www.bedscarpetcleaners.co.uk



McCaffrey

Your local resource for residential
build, refurbishment and maintenance



General building works
Extensions
New builds
Internal refurbishment/alterations

Brickwork
Carpentry
Painting & decorating
Purpose made joinery

Plumbing and heating
Electrical installations
UPVC windows & doors
Garage conversions



call us to discuss your building requirements

01525 861041

E. info@mccaffreybuild.co.uk W. www.mccaffreybuild.co.uk



OSTEOPATHY

Deborah Beare BSc (Hons) Ost.
Registered Osteopath

**The Clophill Centre for
Complementary Therapy**
Clophill Fruit Farm,
Shefford Road
Clophill

- Cranial & Structural Osteopathy
- Neck & Low Back Pain
- Muscle Tension
- Sports Injuries
- Arthritic aches & pains
- Headaches

To book appointments call: **07969 921112**

Washing Machines Dishwashers Dryers Electric Ovens Repairs Servicing Sales



A local family business offering
a quality service at a competitive price
Est. 1981

Tel: CLOPHILL 860148
or Tim Downing direct on 07969 545 276

A member of the White Goods Trade Association
Fully Insured

MB

ACCOUNTING SERVICES

accounting solutions for the
Self-Employed and ***Small Business***
including

HMRC tax returns • Accounts • Bookkeeping

For a totally confidential service at **very competitive rates** contact
Richard Fairholm T: 01525 861087 M: 07714189994 E: mbaccounts@btinternet.com

Stephens

Your local removals & storage company



Specialising in house removals and office relocations in the UK, Europe and Overseas.

REMOVALS

Local, National, International

STORAGE

Secure & Containerised

PACKING

Full Or Part & Materials

LONG ESTABLISHED REMOVAL COMPANY OFFERING A PROFESSIONAL, FRIENDLY SERVICE

COMPREHENSIVE INSURANCE • FREE ESTIMATES

01582 572967

STUART DREW ELECTRICAL SERVICES

MEMBER OF THE ECA

PART P CERTIFIED QUALIFIED TO 17TH EDITION

From extra lights & sockets, to re-wires. Fault finding and electrical safety certification. For a professional, courteous service with free estimates & all work guaranteed, please call me

29 Lincoln Way
Harlington
Beds
LU5 6NG

**Fully qualified & insured
30 years experience**

Telephone:
01525 875965
07941 812662

ROGER STOREY

YOUR LOCAL PAINTER AND DECORATOR

Friendly and Reliable Service

Many Years Experience

Please phone: **01525 861253** or **07800 777615**

Based near Toddington, Bedfordshire.

We rescue, rehabilitate & re-home stray & abandoned cats.

We have lots of beautiful cats waiting for loving homes.

Ring the shelter on 01525 875993

or Sue on 01582 650167 to arrange a visit.



Registered Charity No. 1098984

Visit our website @www.straycatrescue.org.uk

Advertisers index

Architectural Services

Daniel Design & Build 20
S&S Coates Surveying & Design 26

Auctioneers & Valuers

W&H Peacock 31

Bathroom Services

Bathroom Vogue 36

Builders & Carpenters

David Carpenter Building Services 27
McCaffrey Build 41
Peter Sharpe Building Services 19
Stuart Benson Building Projects IFC

Carpet Services

Carpet & Upholstery Cleaning 41

Car Services/Repairs

A&F Motors Ltd IFC
Mint Alloys 37
TC Coomber Car Services BC

Chimney Sweep

Poppins Chimney Sweep IBC

Cleaning Services

Ovenclean 25

Computer Services

Compu-Doc 24
The Computer Man 31

Electrical Services

Stuart Drew Electrical Services 43

Financial Services

AIMS Accountants 30
ET Accountancy Services 27
Hills-Howson Financial Services 30
MB Accounting Services 42
SJ Tax & Accounting Services 23

Food and Refreshments

The Cafe at Peacocks 20
The Happy Plaice 34

Funeral Services

AL&G Abbott, Funeral Directors 29
Neville Funeral Service 35

Garden Services

Adam in your Garden 40
Garden Doctor 33
Green Thumb Lawn Treatment 36
Root 'n Branch 40

Health & Beauty

A Cut Above Hairdressing 23
Amphill & Flitwick Physiotherapy 34
Deborah Pedley Osteopathy 42
Equilibrium Fitness - Pilates 39
Hairs & Graces 28
Linda Allsop Physiotherapy 23
Nicola Rayner Fitness 22
Route 66 Barbers 20
Shamrock Clinic - Foot Health 33
Slimming World 21
Tammys' Talons 22

Home Improvements

Christopher The Painter 22
Roger Storey - Painter & Decorator 43

Locksmiths

Empire Locksmiths 27

Medical Training Services

EMT Academy 37

Music and Entertainment

Greensands Community Choir 24

Nursery Schools

Clophill PreSchool BC
Clophill St Mary's C of E
Acorn Lower School and Nursery 21

Pet & Animal Services

Conifer Kennels & Cattery 38
Happy Pets at Home 27
Ivel Valley Bird Food 28
Lizzie Brown Pet Care 32
Personal Dog Walker 23
Stray Cat Rescue 33
The Bluecat Luxury Cattery 25

Plumbing & Drainage Services

Beta Plumbing 33
Chapman & Kirby Heating 34
Warm Property Services 25

Print Services

Fidelity Design & Print IFC

Public Houses

The Stone Jug 24

Removals & Storage

Stephens 43

Repair Services

Tim Downing Repair Services 42

Security Services

Maximum Security Systems 39

Travel Services

Select Travel Holidays 26

Tuition and Coaching Services

Rincon Tuition (Spanish & Maths) 32
TalkEasy Coaching 22

Village Hall

Clophill Village Hall 38

Windows/Replacement

Andrew Baker Windows 40
AW Windows IBC
Misty Double Glazing 25

IFC = Inside Front Cover

IBC = Inside Back Cover

BC = Back Cover

Ads from as little as £50 per year

For further information about advertising in Spotlight,
please contact our Advertising Manager at ads@clophillspotlight.co.uk



Poppins Chimneys

**Chimneys Swept
Wood and Multifuel Stove
Installation & Liners**

Great Service - Great Price!



01525 860424 or 07858 688785
mark@poppinschimneys.co.uk

**NO PRESSURE SALES – YOU DEAL WITH
THE OWNER FROM START TO FINISH**



- ✓ A-rated windows as standard
- ✓ Composite doors
- ✓ High security
- ✓ Bifolding doors
- ✓ Conservatories
- ✓ Fascias, soffits and guttering
- ✓ Insurance-backed guarantee
- ✓ Fensa certificate



Contact: ANDY WOOD

01582 536944 or 07796 272539
sales@awwindows.co.uk



See reviews from satisfied customers at awwindows.co.uk

Clophill Preschool

**Your local Outstanding Preschool,
based at Clophill Village Hall -
welcoming children from
2 years of age.**

We'll help your child to become an inventive
and creative learner. With access to a fantastic
outdoor area, our focus is on natural and
exploratory 'play with a purpose'.



**Call us today to find
out more:
07765 887868 or
07936 006381**

www.clophillpreschool.co.uk



T.C. COOMBER



**MOT'S CLASS 4/7
SERVICING & REPAIRS
CAR & COMMERCIAL
TYRES & EXHAUSTS
AIR CONDITIONING
DIAGNOSTIC CODE READING**

**Collection
& Delivery**
SERVICE AVAILABLE
Please ask

**AMPTHILL
01525 406330**

UNIT F, AMPTHILL INDUSTRIAL ESTATE, STATION RD, AMPTHILL, MK45 2QY