

Vol 41 | No.1

FREE

CLOPHILL SPOTLIGHT

FEBRUARY 2019

**LOVE YOUR
LOCAL NEWS**

AMPTHILL PRINT CENTRE

**DIGITAL PRINTING
DESIGN & MARKETING
DIRECT MAIL**

and much more...

...and we're right on your doorstep at

Unit 24 Station Road Ind Est, Ampthill, MK45 2QY
(Just off the A507 Ampthill bypass, past the Post Office)

WE PRINT...

- Stationery
- Newsletters
- Menus & Tent cards
- Brochures
- Flyers & Leaflets
- Catalogues
- Books & Booklets
- Direct mail
- Training Manuals
- Banners & Posters
- Greeting cards
- Calendars
- Labels & Stickers
- NCR pads
- Folders
- Exhibition panels
- CD/DVD duplication
- Photocopying

3 DAY STANDARD SERVICE | SAME DAY AVAILABLE

www.fidelityprint.co.uk

Get a quote 01525 300001 quotes@fidelityprint.co.uk

fidelity

Unit 24 Station Rd Ind Est, Ampthill



MOTORS LTD

Tel: (01525) 860292

Tel: (01525) 404919

208 Clophill Road, Maulden, Bedfordshire MK45 2AF
89 Oliver Street, Ampthill, Bedfordshire MK45 2SA

**CAR AND COMMERCIAL VEHICLES
ALSO CLASSIC & AMERICAN CARS
SERVICING – REPAIRS – BREAKDOWN
SPRAYING – M.O.T.**



Stuart Benson Building Projects

**Design, Build and Maintenance including Interior Refurbishments,
Kitchen / Bathroom fitting, Tiling, Flooring, Skirting boards, Doors
Garage conversions, Exterior Decking, Patios, Driveways
Garden Offices/ Sheds**

Tel: 07946 579862 or 01525 403083

Email: benson.stuart@.googlemail.com



Welcome to *February*

News, events, articles and ads – you'll find them all inside this month's love-ly magazine.

The magazine staff

EDITOR/ADVERTISING
MANAGER

Helen Gent
editorial@clophillspotlight.co.uk
ads@clophillspotlight.co.uk

864836

DESIGN MANAGER

Chris Abrahams
cmabrahams@yahoo.co.uk

DISTRIBUTION MANAGER

Pete Liddle

860113

TREASURER

Richard Pearson

861110

Deadline for articles is 20th of the month

You can also read Spotlight online
www.clophillspotlight.co.uk

St Mary the Virgin, Clophill

Lent Lunches

Raffle



Bring & Buy

13th March
20th March
27th March
3rd April
10th April

St Mary's Church
Clophill Methodist Church
TBA
TBA
St Mary's Church

12 noon-2pm

Donations will be given to **Shelter Boxes**
a charity that sends emergency supplies overseas

Everyone very welcome

For information or if you require transport phone Gill Jones 01525 861058

Art Exhibition

Saturday 30th March, 10am-4pm

Wesley Hall, Toddington Methodist Church

Support local artists – art to view and purchase

Free entry. Refreshments. Tombola.

All proceeds (including 10% of art sold) go to Joseph's Goal –
Toddington Methodist Church's charity for the year



Clophill Methodist Church

COFFEE & CROISSANT MORNINGS

All proceeds in aid of Clophill Methodist Church

£1.50

10am-noon

Saturday 2nd March & Saturday 6th April

ALL WELCOME



Clophill Preschool News

Looking back to last year, our nativity went down a storm as we went on our baby hunt collecting shepherds, mice and angels along the way. Thank you to our lovely parents and families for coming along and your kind donations will help us to repair our fence following the vandalism before Christmas. Our Family Christmas Craft Morning was also a great success.

We started the new term in 2019 by getting out in the cold and sun to look at our shadows, **making shadow creatures** and exploring

how they change with the light. We've also been mark-making in salt and investigating numbers, learning to recognise numerals and counting all sorts of things. We've had **'Show and tell'** to improve language development and confidence to talk in front of others and practised putting on wellies, coats, gloves and hats independently. There has



been lots of physical play doing dance with Katie as well as playing on the tyre swing and climbing up and down our tree trunk hill. And we've started our Green Group sessions with those moving up to Reception in September – we relish this time to further their development in partnership with parents to ensure our children are more than ready to continue their learning journey at school.

Never ones to be complacent, we're always exploring new ways to develop and improve.

With money we have fund-raised and a kind parental donation we're hoping to buy some new **child-size wheelbarrows** for the outdoors as well as some little wicker chairs for the outdoor shelter, where we'll be creating some wall art. We've also had our new entrance gate put in, which is a great improvement in the look and efficiency of our setting. Many thanks to VHC and the PC for their support in this.

After we've celebrated Chinese New Year we have our annual **Happy School bags collection** on Wednesday 27th February. This is always a great fund-raiser so if you can donate any clothes, bedding, shoes, belts, bags and cuddly toys please get in touch and we can pick up your bags. Looking forward to March, we have Mother's Day plus don't forget our coffee morning on Wednesday 13th – keep an eye on our Facebook page for more dates during the year.

Finally, do remember our **'Stay and play' sessions** every Tuesday from 9am-10-30am – there's no need to book, just bring your little ones up for an explore. We look forward to seeing even more new faces soon!

- Contact Imogen on **07765 887868** or Chris on **07936 006381** or email clophillpreschool@gmail.com. Our website is www.clophillpreschool.co.uk



Clophill Village Hall Presents

A NIGHT OF ROCK 'N' ROLL WITH

The Downtown Daddyo's



Rock 'n' Roll DJ

Large Dance Floor

Fully Serviced Bar

Ample Free Parking

**SATURDAY 27TH
APRIL 2019
7:30pm 'TIL LATE**

£10 ADV
£12 OTD

**GLOPHILL VILLAGE HALL
BEDFORDSHIRE
MK45 4DA**

For Tickets & Info Call Steve on 07831255807 or email steve.langhorn@gmail.com

St Mary's Church News



The last month of 2018 was busy as ever, with the Christingle Service, our popular annual Christmas lunch – which was enjoyed by about 50 people – plus three services...the Crib Service for children on Christmas Eve followed by the Festival of Lessons and Carols, then Christmas Communion on Christmas morning. The church was again full for a Memorial Service for Ian Gordon on 29th December.

St. Mary's Registers for December

Baptisms

Dec 16: Kizzy Shania Stanley;
Sinaede Rebecca Sarah Hughes;
Nevaeh Angeline Pinnock

Funeral

Dec 7: Brian Gerald Pressland, 82

Memorial Service

Dec 29: Ian Talbot Gordon, 77

News from Clophill Heritage Trust

2018 was a busy year for Clophill Heritage Trust and we plan to make 2019 bigger and better! We're thrilled to be including more of our popular Guided Walks and Foraging Workshops as well as our annual Pumpkin Festival in our Events Calendar – you can view what's in store at www.ClophillEcoLodges.org.uk/Events

The Nest

Don't forget that our communal room, The Nest, is available for private hire and we can include Tower Tours of old St Mary's church, Bush Skills sessions, guided walks and more to make your event really memorable. Clophill residents receive a 20% discount on any accommodation or venue hire.

Volunteers needed

We're looking for volunteers who have a couple of hours free a month. We're a friendly group and whatever your interest, from gardening to painting, we'd be thrilled to have you. Please contact Emily on 07935 911207 or email info@ClophillEcoLodges.co.uk

**For info call 07935 911207 or email info@clophillecolodges.co.uk
[www.Facebook.com/ClophillEcoLodges](https://www.facebook.com/ClophillEcoLodges)**

To Spotlight...

Dear Friends

The Gordon family would like to thank everyone who sent cards and messages of sympathy following the death of our beloved Ian. We were truly overwhelmed by the kindness shown to us and the appreciation of Ian. Thanks also to all who attended either his Requiem Mass in Shefford or/and the Memorial Service in St. Mary's, and who gave so generously to the collection for Bloodwise. More than £400 was donated in Ian's memory.

Please accept our heartfelt thanks,

Adrienne, Juliet, Andy and Liz Gordon



Bedfordshire's
BIGGEST
afternoon
tea

• LIVE JAZZ BAND • RAFFLE •
FREE GLASS OF PROSECCO

**Sunday 24
March 2019
2-5pm**

The Cross Keys
13 High Street
Pulloxhill
Bedfordshire
MK45 5HB

Tickets at:
www.keech.org.uk/afternoontea
or call: 01582 707940

FR Registered with
Financial
REGULATOR
Registered Charity No. 1035089

 **Keech**
hospice care

Edmund Grey, 1st Earl of Kent – Hero or Blackadder?

Monday 4th March, 7.30 for 7.45pm

Speaker – Chris Martin

Edmund, having inherited his lands, title and good name from his grandfather and father, survived and prospered through the perilous period of the Wars of the Roses (during which he changed his allegiances several times). He became Lord Treasurer of England, although not for long as he received an admonitory warrant, possibly for paying himself for the unpaid naper services provided for Edward's coronation. Two of his sons married sisters of Queen Elizabeth and he was created Earl of Kent.

His second son, George, succeeded him and prospered, but his son Richard, although a favourite at Court, incurred large debts, mostly from gambling where he lost most of his family's lands and money, plus those of his wives.

Lecture Theatre, Flitwick Library MK45 1QJ

£2 for members and £3 for visitors, payable on the door.

Further details: clive.makin@ntlworld.com Tel: 01582 655785

www.adalhs.org.uk

Ampthill & District Archaeological & Local History Society



News from Clophill Methodist Church

The members of Clophill Methodist Church wish you a Happy New Year. Thank you for all your support last year. We supported and raised funds for lots of charities – Macmillan, Christmas shoe box appeal, Noah Enterprise Luton, Historic Churches Trust, Action For Children, Women's Refuge Bedford, Trussell Trust, Emmaus and Lent Lunches. The year ended with our Alternative Christmas Tree Festival and Carol Service, providing a large donation of food to Noah and also supporting a stall raising funds for Keech Cottage Hospice. It was lovely to open our doors and welcome members of our community and further afield at this special time of year.

We will continue in 2019 with our regular events, and look forward to welcoming you all. Our Sunday service is at 10.30am followed by refreshments. We have a weekly 'Tea and Chat', our 'Coffee and Croissants' is monthly and we hold Messy Church every two months.

Peace Be With You

Nicola Wood, On behalf of Clophill Methodist Church

Become a volunteer at Warden Abbey Vineyard

WARDEN ABBEY
The community vineyard



Fancy grabbing some secateurs and pruning vines at the Warden Abbey Vineyard?
Or helping to organise events and activities, be a tour guide or assist with marketing?
There are a range of volunteering opportunities available at the vineyard to suit your interests.
www.wardenvineyard.org.uk/get-involved

• For more information contact Jane Markham on 07981 113714 or info@wardenvineyard.org.uk

Could you be a Collection Box Coordinator for Marie Curie?

Marie Curie are looking for people to help look after collection boxes that are on display in shops, newsagents, chemists, pubs and doctors' surgeries and also to place collection boxes in new locations in their community. Coordinators must be 18 or over and able to look after collection boxes and count and bank the money.

Marie Curie provide vital care and support to people living with a terminal illness, and their families. For more information on becoming a collection box coordinator, contact Peter Sara on 01604 258761 or email on peter.sara@mariecurie.org.uk

Care and support
through terminal illness





St Mary's School News

Since their return back to school the children have been enjoying telling us all about their Christmas holidays and seem ready to begin the busy Spring term ahead.

We began the New Year with a visit from Arena Theatre. Every class from our Nursery children to Year 4 watched their Snow Queen production, which was followed by a Q&A session where our children were invited to ask questions about the characters and their actions.

A group of Year 2 children also represented the school at a Multiskills event at Etonbury Academy. The children always try their hardest at these events, perform well and are wonderful ambassadors for the school.

During January the children from Chestnut to Oak attended our annual Candlemas Service in Church. We're always proud of the behaviour of the children during Church Services and of the children who support the Service by leading readings from the Bible and prayers.

At the beginning of February the School Council will encourage the school to come dressed in bright clothing to support the 'Shine Bright, Wear Bright' campaign, which is run by the charity CHUMS as part of Children's Mental Health Week. School Council events are always enjoyable and are well supported by the other children within school.



Our value for February is *Endurance (Perseverance)*

In school we'll be reflecting on the importance of not giving up even when we find things difficult. We'll also be encouraging our children to think about times when they found something hard but didn't give up. How did they feel once they had succeeded? What steps did they take to help them succeed? What advice would they give to someone who was finding something hard?

Acorn Nursery News

We welcomed back our children after the festive break and enjoyed hearing about what they'd been doing. We'd also like to extend a big, warm welcome to all the children and their families who are joining us in Acorn Class for the first time this term.

Our theme for this half term is **'We're going on a Bear Hunt'** and we've kicked off the fun by listening to the story, acting out an exciting bear hunt together and turning our playhouse into a bear cave! We're discussing how the bear might feel in the story and exploring different emotions through our activities.



- We take children from 2 years 7 months and offer wrap around care (07.45am-5.30pm, Monday-Thursday, 07.45am-5pm Friday). If you're interested in your child joining us please email Tracy Hayes, Nursery Manager, on nursery@clophillstmarysschool.co.uk

Come into the Garden

with *Kate Gardner*



While it's tempting to get a head start on the season as the days lengthen and the sun feels a little warmer, a warm spell can be followed by freezing weather or lots of rain, which will wreck early sowings and plantings. The important thing is to be patient! Spend this time finishing off any trimming of dead growth, clipping back and general preparation for the new growing season.

February is a good time to **give your compost heap or bin a 'spring turn'**. Turning will open it up and introduce fresh oxygen to stimulate the heap. If it's too dry, then mix in some green waste (weeds, green clippings from your pruning and uncooked vegetable scraps or fruit peelings) and water it occasionally. If it's too wet or smells bad you'll need to add more carbon-rich stuff such as twigs, scrunched-up cardboard and paper waste. For composting to work best, the heap needs a good balance of microbes and oxygen to generate the heat that will aid with the decomposition of the waste.

This month is also the perfect time to **prune your wisteria**, encouraging the plant to put its energy into producing beautiful racemes of delicate blooms, cutting back summer side-shoots to two or three buds. Late-flowering (or group 3) clematis are varieties that bloom from summer to late autumn on the current year's stems. This group also contains the herbaceous clematis species. Arguably the easiest to prune, cut your late-flowering clematis back to a pair of strong buds about 20cm (8inch) above the ground in spring before they start into active growth. The **large-flowered clematis** which bear flowers on new shoots, which grow from the previous year's stems, are referred to as Group 2. These are also good to prune during the spring, when the plant is still dormant. Remove any damaged, dead or weak stems, cutting back to a pair of healthy buds. Avoid heavy pruning at this stage as you may get fewer early flowers.

Cut back shrubs, such as Cornus and Salix cultivars (grown for their colourful winter stems), down to their bases. Now is also a good time to prune winter-flowering shrubs such as Winter Jasmine, Mahonia and Viburnum x bodnantense after their colourful displays have finished. Cut back the old foliage from **ornamental grasses** before growth begins. Clip them to within a few centimetres of the ground and trim winter-flowering heathers as the flowers disappear, to prevent the plants becoming leggy. Remove any faded flowers from your winter pansies to stop them setting seed and this will encourage a flush of new flowers when the weather warms up.

As you take stock of your garden you may decide that it needs more winter interest. Now is the time to plant out fragrant winter-flowering shrubs to add interest to borders. Try Daphne, Viburnum x bodnantense, Witch Hazel (Hamamelis x intermedia) and Wintersweet (Chimonanthus praecox).

If you're looking for inspiration for your spring garden, why not visit one of the many private gardens that will be open for the **National Garden Scheme Snowdrop Festival**. Not only will you see some fantastic gardens but you'll also get to eat great cake and support the work of a number of nursing and health care charities.



Remembering Clophill's Fallen

Continuing our series of the centenary of Clophill's brave men who lost their lives in the First World war, this month we focus on George Wilden.

Although the war had ended, George's death is commemorated on our village memorial. George died on 13th February 1919 of pneumonia. He was 29 and had been married for just three years.

George was born in Clophill in 1890 and by 1911 he was living with his parents, Sarah and Frederick (a gardener), three of his sisters, and his brother, John, who also lost his life in WW1 and is commemorated on our memorial, too. George worked as a market gardener. The family lived at 7 The Green. The Wilden brothers are also commemorated on the Stoke Albany/Wilbarston, Northamptonshire memorial and so it's presumed that they lived in that area after the 1911 Census was taken.

George was an Air Mechanic 3rd Class in the 23rd Wing RAF (originally the Royal Flying Corps). He was later transferred to the 477th Agricultural Company Labour Corps. He married Amy Bitten in St Ives, Hunts, in 1916. She subsequently lived in Castle Road, Bedford. The rank of Air Mechanic 3rd Class existed between September 1916 and January 1919 and applied to all RFC/RAF recruits who failed to pass the trade test to be an Air Mechanic 2nd Class at the time of their enlistment or were otherwise working towards their Air Mechanic 2 test.



The date of and reasons for George's transfer to the Labour Corps (formed of men below 'A1' medical grad.) aren't known. As an air mechanic he's likely to have been wounded in the line of duty, though not necessarily in combat – accidents when working on aircraft and ordnance were common.

George died after a short illness in a 4th Northern Military Hospital in Lincolnshire. His grave is the only WW1 grave at the Old Church.



Bedfordshire
Cambridgeshire
Northamptonshire

Wildlife walks & talks



Wildlife on a Bedfordshire Farm

Monday 18th March, 7.30pm, Maulden Church Hall

Dave Parsons, known to many for his wildlife volunteering, has watched, monitored and recorded the wildlife on a local Bedfordshire farm for over 20 years. His talk is illustrated with his own photographs, capturing the birds and animals throughout the seasons over two decades.

Open to all – £3 per adult

For additional information please email flitvale.info@gmail.com or ring Ann on 075801 78889 after 6pm or at weekends. www.flitvale.org.uk

Clophill & District Flower Club



We saw out the end of last year with the creation of a stunning exhibit at the Alternative Christmas Tree Festival. Our ladies made 53 trees all based on a cone shape and decorated with either fresh foliage and flowers or artificial

decorations, which were displayed around the altar area with lights and cones. The Flower Club also made a large floral tree in pink and purple that showcased our skills and talents. At our final club meeting of the year we had a **'Christmas Magic'** demonstration given by John Chennel, who filled the stage with large designs using a variety of evergreen foliage and some beautiful flowers. There were 14 lucky members of the audience who won a prize in the raffle.



In January we held our AGM which is always a very social evening where we look back over the past year. During 2018 we had three day trips – one to the National Flower Show at Hylands House, a visit to RHS Wisley and then to Ely in November for the Christmas Craft and food Fair. We had a very successful year as our membership increased to 92, making our club one of the largest in the Home Counties.

Each year we raise money for a local charity by arranging flowers for weddings and a stall at our meetings. **In 2018 we raised £800** for research and support for patients with Bowel Cancer at Bedford Hospital, in remembrance of one of our members who was treated there in 2017.

In 2019 we'll continue to welcome more members and visitors to our monthly meetings. We have a great programme planned with lots of demonstrations, two flower festivals and some weddings. Everyone is welcome to our club, and you will find that we are friendly and well organised.

Carolyn Cranswick, Chairman



- For information on upcoming demonstrations, go to www.clophillflowerclub.com or phone Gillian 01525 860539 or Carolyn 01462 815433

CLOPHILL METHODIST CHURCH

BEETLE DRIVE

Saturday 23rd February 2019

6.30pm

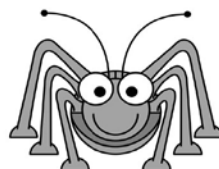
Adults £5 Children £2.50

Refreshments

In aid of

Clophill Methodist Church

Tel: 01525 860695



These notes are a resume only. Official minutes are available on the internet and notice boards. All official correspondence should be sent to the parish clerk and not individual councillors.

The Parish Council agreed to **increase the amount of Precept** (council tax required to pay for services in the Parish) requested from CBC by £3.39 per year for a Band D house. This is about 28p a month. As a percentage increase, this is approximately 9% – similar to last year.

The meeting heard about all the projects the PC has delivered and has resolved to deliver including the outdoor gym equipment, footway improvements and the soon to be delivered teen shelter. Such improvements have been part funded by S.106 monies but a proportion is funded by the PC through the Precept.

It was also agreed to implement a big cost-saving measure by accelerating the **replacement of the street lighting**. This requires 31 older-style bulbs in the village to be replaced with LEDs, but the associated savings in electricity and maintenance will bring longer-term benefits. The Parish Council contribution comes to roughly 2% of the overall council tax bill, so we hope you agree it offers decent value. We also discussed and agreed to support increases to the amount our police and fire services receive. We hope in particular that the increases in **policing contributions** will lead to a more visible and proactive crime prevention and responses to incidents in Clophill.

As part of our review of grant aid, we agreed to **award Clophill United Football Club £400** towards their new portable floodlights. We're delighted to support the club again, and hope the floodlights enable more young Clophillians to have access to football training on our recreation ground. Meanwhile, it looks as though the teen shelter will appear on the recreation ground within the next few weeks – we'll update the village on our Facebook page when we know precise dates.

We're planning to reignite our **Clophill Neighbourhood Watch** scheme and are looking for support from residents. Clophill Parish Council will post information on our website and on our social media feeds, but the easiest way to register your interest is through www.ourwatch.org.uk – select Clophill when registering your interest. Thanks to Cllr Wendy Austin for leading on this initiative.

We've noted the issue of **HGVs causing problems** in Back Street, Mill Lane and Kiln Lane. There's a sign on Back Street clearly stating the weight limit into the village – if you see any lorries breaching the limit please report it to CBC at hgv@centralbedfordshire.gov.uk giving the name of the company, registration number, location plus the date and time.



Cllr Giles Warner has decided to step down from Clophill Parish Council with immediate effect due to a change in his work commitments. We thank Giles for his contributions since 2015, particularly his work with the village allotments. In May there'll be **an election for all the positions in the Parish Council** – if you're interested in making decisions that affect village life, please consider applying. Nomination forms will be available from the beginning of March and we'll disseminate information about how to apply nearer the time.

- Full minutes from meetings can be found at clophill-pc.gov.uk

Clophill Parish Council

Planning

CB/18/04654/FULL

Location: 2 The Slade
Proposal: Single-storey rear extension

SUPPORT

CB/18/04552/FULL

Location: 98 & 100 High Street
Proposal: Detached double garage to the rear of 98 & 100 High Street
– **with the condition that the development can't be changed to living accommodation**

SUPPORT

CB/18/04715/RM

Location: Land West of Jacques Lane
Proposal: Reserved Matters following planning permission CB/17/03228/OUT
Landscaping, layout and scale for erection of seven residential dwellings and garages along the site frontage with a single-access point from Jacques Lane. Objections include: lack of a construction plan; management of access for HGV not detailed; garage sizes don't meet CBC design guide requirement; bin collection points storage more than 10m away.

OBJECT

The next Parish Council meeting will take place at the Methodist Church at 7.45pm on Tuesday 26 February

Village groups

Beverley Court	860920
Brownies	https://enquiryym.girlguiding.org.uk
Clophill Community Care	Duty Contact 07791 773705
Clophill Heritage Trust	Ali Bradbury 07894 710001
Clophill St Mary's C of E Lower School & Nursery	Emma Topliff 860206
Clophill Toddler Group	Hannah Compton 07535 705711
Clophill United Charities	Gillian Hill 860539
Conservation Group	Brian Adams 862297
Flower Club	Gillian Hill 860539
Friends of the Cheshire Home	Sue Pearson 861110
Funzone After School Club	07903 167493
Greensands Community Choir	Luke Howard 07975 520085
Indoor Carpet Bowls	Tony Meredith 860754
Messy Church	Victoria Higgins 07920 568861
	victoriajhiggins@hotmail.co.uk
St Mary's PTA	Julia Skelton 07774 993973
Scouts and Cubs	www.scouts.org.uk/get-involved
Tea and Chat	Anita Errick involved
Village Hall Booking Secretary	Marilyn Browning 860695
	07821 643936

Useful numbers

Gas (Emergency)		0800 111999
Electricity (Emergency)		0800 7838838
Emergency Fire/Police/Ambulance		999
Water/Sewage (Anglian Water)		0845 7145145
Telephone	(Customer Services) 150 (Faults)	151
Highways Department (Central Bedfordshire Council)		0300 3008049
Benefits Agency (Bedford office)		01234 361500
Registrar's Office (Births/deaths/marriages)		0300 3008089
Rail (Enquiries)		0845 7484950
Buses 01234 262151	(Link A Ride) 01525 840511 (Flittabus)	01582 406561
Luton Airport		01582 405100
Swimming	(Flitwick) 01525 717744 (Robinson Pool)	01234 212479

LOCAL GOVERNMENT

Central Beds Offices (Chicksands)		0300 300 8000
Mid-Beds MP	Nadine Dorries	01462 811992
Central Bedfordshire Councillors	Michael Blair	01525 404513
	Paul Duckett	07988 184061
Clophill Parish Council	Paul Downing	01525 860350
	(Clerk) James Stirling	01462 887226

HOSPITALS

Bedford (North & South)	01234 355122	Admissions	01234 261150
		Appointments	01234 359012
Luton & Dunstable			0845 1270127

DOCTOR'S CLINICS

Amphill	(Houghton Close) 01525 300898	(Oliver Street)	01525 631395
		(Greensands)	01525 631390
Shefford	Enquiries 01462 818620	Appointments	01462 810034
Barton 01582 528700		Flitwick	01525 715300

POLICE

	Non Emergency	101
County Police HQ		01234 841212
Amphill Station		101

CHURCHES

St Mary's Parish Church	Revd Dean Henley	01234 381235
St Francis RC Church, Shefford	Ian Gordon	01525 860875
Clophill Methodist Church	Jim Davies	01525 860829
Baptist Churches (Amphill) Doreen Gibbs 01525 862424	(Maulden) Ian Crawford	01525 634325
	(Shefford) Hazel Arnold	01462 812564

SCHOOLS

Clophill St Mary's C of E Lower School & Nursery (Headteacher Mrs K Bingley)	01525 860206
Harlington Upper School , Harlington	01525 755100
Preschool clophillpreschool@gmail.com (Chris) 07936 006381 or (Imogen)	07765 887868
Redborne Upper School , Amphill	01525 404462
Robert Bloomfield Middle School , Shefford	01462 628800

What's on in and around Clophill

MARCH

24

Sunday 24th

Macmillan Afternoon Tea The Cross Keys, Pulloxhill, 2pm-5pm
See this issue for ticket details

30

Sunday 30th

Art Exhibition Wesley Hall, Toddington Methodist Church, 10am-4pm

APRIL

27

Saturday 27th

The Downtown Daddy's Rock 'n' roll night, Clophill Village Hall, 7.30pm-late
See this issue for ticket details

On throughout the month...

Wednesdays...

- **Tea and Chat** 10.30 to noon, Methodist Church

Fridays...

- **Clophill Toddler Group** 10am-11.30am, Village Hall, See 'Village Groups' for contact details

One Saturday a month...

- **Messy Church** 4pm-6pm, Clophill Methodist Church. Dates: Mar 16; May 18; Jul 20; Sep 14; Nov 16; Dec 14.
See 'Village Groups' for contact details.

CHURCH SERVICES

Regular services at St Mary's Church, Clophill

1st Sunday	8am, Holy Communion; 10.45am, Family Praise
2nd & 4th Sundays	10.45am, Parish Communion
3rd Sunday	10.45am, Morning Prayer/Praise
5th Sunday	10am, Benefice Services

Regular services at Clophill Methodist Church

1st, 2nd, 4th, 5th Sundays	10.30am Morning Service
3rd Sunday	10.30am All Age Worship Service

If you have any diary dates that you would like included on this page, please email clophillspotlight1@hotmail.co.uk

Greensand Community Choir
LOVE SINGING!
sing with an exciting local choir...

Come along to your local **community choir**,
for men and women of all singing abilities!
Mondays, 8.00-9.30 pm at St. Mary's Church, Clophill.

- Come and sing with an exciting new local choir led by a professional musical director
- Uplifting music in a variety of styles: musicals, classic pop, folksongs, sacred and world music
- Welcoming singers of all abilities - no audition, no need to read music!
- New members - come along any time for a free taster

Enquiries to:

greensandcommunitychoir@gmail.com

or ring Luke on: 07975 520085

Painter and Decorator

Call Chris : 07950714579



*do you want your
home brightening up?*

all interior & exterior work

no job too small!

free no obligation quote

*25 years experience
& fully insured*

*facebook: @christopherthepainter
email: chris.minihane@btinternet.com*

JK Garden and Landscape Services Ltd



We offer...

full landscaping service

patios

fencing

decking

new lawns

driveways

all garden maintenance

Contact us on **0791 2028254**
or at **jkgardening@hotmail.co.uk**

You can also find us on Facebook

TALKEASY Coaching

***Do you want to make a fundamental
difference to your life and don't
know where to start?***

My name is Lynn and I am a Life Coach.

I have extensive experience helping
with every aspect of life, e.g. support with
family issues, or your own financial,
emotional, or physical wellbeing.

My most recent project has been supporting
young teenagers in their place of education.

Be the change in your life
and contact me for a free,
no obligation chat.



07557948644

01525860384

lynncllements87@gmail.com

Tammys' Talons

Nail Technician

Gel. Manicure and Pedicure

IZABELLEHAMMON
REGISTERED NAIL TECHNICIAN
CALGEL **IZ** by **Chapman**

Tammy Kirby

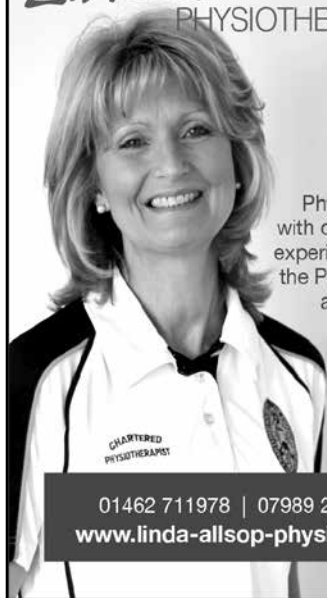
Clophill, Bedfordshire, MK45 4AW

Tel : 07968379309

tammystalons@gmail.com

Linda Allsop

PHYSIOTHERAPY



Chartered
Physiotherapist
with over 30 years
experience in both
the Private Sector
and the NHS.

01462 711978 | 07989 257026
www.linda-allsop-physio.co.uk

USING PARABEN & SULPHATE FREE, 100% VEGAN,
CRUELTY FREE PRODUCTS



A Cut Above Hairdressing by Rachel

In the comfort of your own home
cutting & styling specialist

call or text : 07896009382
facebook: acutaboverachel

Salon experienced
Fully insured
Fully qualified to Level 3 Standard.

PERSONAL DOG WALKER

£10 per hour
£7 per half hour
£6 per visit

- First Aid Certified
- Insured



Text or call Corrane on
07576 473373 or 01525 630740

 Corrane's personal dog walking



Professional friendly accountancy services

Fully qualified,
Free initial consultation,
competitive fees
Sole traders, Ltd companies,
bookkeeping, payroll,
CIS, VAT & Tax.

sally@sjtax.co.uk
01234 831997
07899 808592

20% discount
on your first visit with this advert



Opening Times

Sunday/Monday Closed

Tuesday/Wednesday
9.30am - 4pm

Thursday
9.30am - 7pm (Summer 8pm)

Friday 9.30am - 6pm

Saturday 8.30am - 4pm

Children's Corner

Lots of free parking

First Sunday of the month open for
special needs (Autism) appointments only

Route 66 Barbers, 22 High Street, Silsoe, Bedfordshire MK45 4EP Tel: 07813 145112

Telephone
**01525
860526**

The Stone Jug

A Free House

BACK STREET, CLOPHILL

Despite many protestations from 'the Matriarch', Joyce is still very much at the helm (or so we tell her!). Vikki has been demoted (but she's still here, don't you know!) and Mark has moved into pole position and is doing exceptionally well. We're still very much a family-run village pub with our late dad's saying still ringing true – 'We're a proper pub for proper people'. Cheers!

- 5 real ales, including 2 guest pumps that change frequently (see our Facebook page for details)
- selection of wines and Prosecco by the glass – or even better, by the bottle
- home-cooked lunches Tues-Sat, 12pm-2pm



REMEMBER OUR MOTTO

"A VISIT TO THE JUG IS BETTER THAN GOING TO A PUB"

CHEERS JOYCE & VIKKI

www.stonejug.co.uk

www.facebook.com/thestonejugclophill



MOTHERING THE MOTHER THROUGH

pregnancy, childbirth & beyond

I offer bespoke practical and emotional support to mothers and families perinatally. Find out how I can protect your birth space and support your journey on your terms.

CONTACT YOUR LOCAL DOULA ROSIE: 07543 280171 WWW.ROSIECARTERSUSO.COM

OVENCLEAN.

The original oven cleaning specialists

All types cleaned:



- Ovens
- Grills
- Ranges
- Hobs
- AGAs
- Microwaves
- BBQs
- Extractors

Fully insured, and DBS Police Checked

For a quote call Clive direct on:
**07949 233089 or phone the
Office on 0800 840 7127**



www.ovenclean.com



Ovenclean Clive Burgess

Warm Property Services



Heating



Plumbing



Bathrooms



Maulden based. British Gas trained engineer with more than 10 years' experience. Discount for over 60's.

Free no obligation quote & advice.



Boiler and heating installations



Power flushing



Landlord Safety certificates



Bathroom suites



Plumbing and drainage



Fires and cookers

07716 478794 01525 839342
www.warmprops.co.uk

THE BLUECAT



Tel: 01525 861416
www.thebluecat.net

Find us on Facebook @thebluecatcattery
or email us at enquiries@thebluecat.net

The Bluecat is a luxury cattery set in the quiet area of Jacques Lane in Clapham. With just 14 cat chalets, we have time to fuss, pamper and play with your cat to its heart's content whilst in our care. Please call for further information.

Misty Double Glazing?

Over 30
Years
experience.
FREE
Quotes

Over 30
Years
experience.
FREE
Quotes

**KEEP YOUR WINDOW FRAMES...
... WE JUST REPLACE THE GLASS!**

• UPVC • Aluminium • Or Wood

Because we replace just the glass the repair is a
Fraction of the cost of a complete replacement window.

BEFORE



AFTER



mistydoublinglazing.co.uk
QUALITY GLAZING SERVICES

01525 876808

WE ALSO REPLACE BROKEN...

• Glass • Handles • Hinges & Locks
AND REPAIR...Patio Doors & Conservatories!

Nicola Rayner Fitness

Feel great in 2019!

BOXWORX

Fun, effective pad work based boxing class for a great stress relieving total body workout!

Wednesday 8-9pm

Clophill village hall

Limited spaces available booking essential

Pilates & Men's Core Strength

Improved core strength and posture through low impact stretching and spine safe conditioning exercises. Delivered with a positive, caring approach in a fun and friendly environment to leave you feeling energized!

Classes in Flitton & Silsoe

Limited spaces available booking essential

Classes also in the surrounding area

Legs, Bums & tums

Zumba

Ladies Boot Camp

For full timetable or to book contact Nicola
fitone@live.co.uk 07801 510988

E.T. Accountancy Services

Experienced Chartered Accountant and Chartered Tax adviser based in Clophill providing a full range of accountancy and taxation services to businesses and private individuals.

To arrange a free initial consultation please telephone me on 01525 590465 or email emma@et-accountancy.co.uk

*Chartered Accountant and
Chartered Tax Adviser*

Emma Thoulass FCA CTA
www.et-accountancy.co.uk
01525 590465

Take out an annual ad in Spotlight

Black & White per year

One-sixth	£53	H31 x W126mm
One-quarter	£69	H92 x W61mm
One-third	£80	H61 x W126mm
Half page	£112	H92 x W126mm

Please email our Advertising Manager
at ads@clohillspotlight.co.uk



be hot!

with
Slimming World

TUESDAY

Silsoe

Silsoe Community Sports Centre
Chestnut Avenue, MK45 4GP
5:30pm & 7:30pm

Tel / Text: Liz for details
07973 532793

slimmingworld.co.uk
0344 897 8000   



Welcome to Clophill St Mary's C of E Lower School and Nursery

A small, friendly, Voluntary Aided Church of England Lower School, graded 'Outstanding' by Ofsted, with close links to the local community.

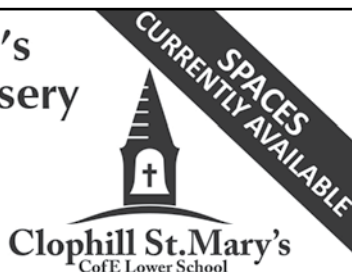
St. Mary's is a Values based school taking children aged from 2 years 7 months to 9 years and providing them with a framework for living, tightly woven into the positive Christian ethos of the school.

Breakfast and after school care for all ages.

Acorn Nursery

for preschool children aged 2 years 7 months to 4 years with breakfast and after school care available.

Providing 30 hours free childcare entitlement.



To arrange a visit, please call us 01525 860206
or email: generaladmin@nursery@clophillstmarysschool.co.uk
For more information visit: www.clophillstmarysschool.co.uk

An invitation to our exclusive event

JUST YOU - EXCLUSIVELY FOR SOLO TRAVELLERS

Holidays for anyone who wants to travel solo

Meet the experts on

THURSDAY 28 FEBRUARY

Presentation at 3.00pm & 6.30pm
or drop in between 4.00pm & 6.30pm

*Find out why a Just You holiday is perfect
if you want to travel solo and experience a
new destination in good company*



If you would like to attend this event, please register your interest on 01234 326778.
Places for the presentations are limited, please book your place to avoid disappointment.

01234 326778

24 Mill Street, Bedford MK40 3HD

sales@cruiseselect.co.uk

www.selecttravelholidays.co.uk

www.cruiseselect.co.uk



BOOK WITH CONFIDENCE
ABTA & ATOL protected



ARCHITECTURAL DRAWINGS AND BUILDING DESIGN SERVICES

Professional Architectural design services provided for all types
of private residential building projects including extensions, loft/
garage conversions, garages and outbuildings through to new build
dwellings with all necessary council approvals obtained.

For free estimates and advice contact Steve
Coates on Flitwick 01525 862457 or 07960 215053.

stevecoates72@gmail.com

S & S Coates Surveying & Design, Unit 4 The Courtyard,
r/o 13 High St, Clophill, MK45 4AB.



A L & G ABBOTT

Funeral Directors

~ Established 1832 ~

WITH YOU WHEN IT MATTERS MOST

An independent family business continuing to provide a caring & professional service to Bedford, Kempston & the surrounding villages.



- 24 Hour Personal Service
- Pre-Paid Funeral Plans
- Private Chapels of Rest
- Green Burials
- Home Arrangements
- Civil Services Available



T 01234 843222

www.abbott-funerals.co.uk

support@abbott-funerals.co.uk

150 BEDFORD ROAD, KEMPSTON, BEDFORDSHIRE, MK42 8BH

AIMS

Tim Kemp BA FCA
Top Barn Rectory Road
Steppingly MK45 5AT

TEL/FAX : 01525 717141
MOBILE : 07900 823 012
www.aims.co.uk
e-mail: timk@aims.co.uk

- ◆ **Professional** service providing for all your accounting and tax needs
- ◆ **Practical** advice based on 20 years experience in **running** businesses
- ◆ **Personal** approach with fixed fees relevant to the work **you** need
- ◆ **Friendly, local** accountant supporting the community for over 20 years

Please call for a free, no-obligation initial meeting

ACCOUNTANTS FOR *business*

Hills-Howson Financial Services

Financial adviser appointments available in your home or our office

The Old Post Office
53 High Street
Claphill
Beds MK45 4BE

Tel: 01525 861803
www.hills-howson.co.uk
hills.howson@btconnect.com

Including:-

Investments

Pensions

Protection

Annuities



W&H PEACOCK

AUCTIONEERS & VALUERS

Weekly Auctions

Visit the Bedford Auction Centre to enjoy the excitement of a live auction.

Antique & Modern Furniture • Clocks • Books
Ceramics & Glassware • Pictures & Prints
Bicycles • Jewellery & Watches • Collectables
Garage Tools & Equipment • Household Electrical Items
Office Furniture & Equipment • Retail Products & Stock
Vehicles • Horticultural & Commercial Equipment
Building Materials • Garden Furniture & Effects

Eastcotts Park, Wallis Way, Bedford MK42 0PE 01234 266 366 peacockauction.co.uk

THE COMPUTER MAN



Got a problem with your computer and don't know what to do? Suffering with a virus or spam?

Don't hesitate! Ring your local computer expert

**Remote repairs or home visits
(Day, evening & weekend)**

**Lap top/desk top loan
(Free pick up & drop off in local area)**

Comprehensive health check from £35 (**Special Offer** £35 - normally £40)
Refurbished fl at screen available from £15 • Refurbished base units available from £99



Contact Stephen Amos
07976 718567
the.computerman@ntlworld.com





rincontuition - Spanish & Maths

Expand your knowledge. Boost your confidence

Phone 01525 860743 - Mob 07952 667814

Exam techniques and preparation. Revision and practice papers: SATs, 11+ and GCSEs

Spanish for business or pleasure, all levels. GCSE & A-levels

Skills development: conversation, reading and writing

Maths: Boost your confidence and abilities

KS1, KS2, KS3, SATs, 11+ and GCSE practice papers.

References available. Reasonable rates

Enquiries: 01525 860743 - 07952 667814

rincontuition@yahoo.com



LIZZIE BROWN PET CARE & HORSE GROOM SERVICES



**DOG WALKING
PET POP-IN & FEEDING
PET/HOUSE SITTING
EQUINE GROOM***

(*BTEC Cert Equine Management)



Lizzie Brown 01525 862459 / 07500 989 700

Reliable friendly local service

Short notice available (no contract commitments)

Insured Quality references available CRB checked*

*(Disclosure & Barring Service)

Hairs & Graces

Unisex Salon



Wet Cut £19
Cut & Blow Dry £30
Colours start from £27
Special OAP rates

Opening Hours:

Monday	9.30-2.00
Tuesday	9.30-5.00
Wednesday	9.30-5.00
Thursday	9.30-8.00
Friday	9.30-8.00
Saturday	9.30-4.00

Zoe, Donna, Gemma
and Amanda look forward
to welcoming you.

Ring now to book an
appointment.
Appointments also
available with our Barber.

Burgoine Business Centre, 117 Clophill Road, Maulden MK45 2AE

01525 861491 • Loads of free parking



GARDEN DOCTOR

Rob McLeod
Pruning Specialist

Professional, Local, Experienced

- * All tree and hedge work undertaken
- * High standard of work
- * Rubbish cleared from site
- * Free Quotations
- * Local, reliable service you can trust

Tel: 07763 239340 or 01525 861568
email: garden.doctor@btinternet.com

Call the Garden Doctor and bring Good Health to your Garden



Tree Surgery & Removal
Shrubs & Fruit Trees
Pruning & Spraying
Fully certificated and
insured



We'll get you up and running!

We offer the very best physiotherapy care from a friendly approachable team of nine highly trained Chartered Physiotherapists all members of the Health Professionals Council

Expert treatment including:

Neck/Back/Hand and Tennis Elbow Pain
Headaches/Migraine/Sciatica
Incontinence/Pelvic/SIJ/SPD/Pregnancy Back Pain
Sprains/Strains/Torn Ligaments
Whiplash/RSI/Osteoporosis/Sports Injuries

Specialist Physiotherapists:

Neurological, Paediatric, Vertigo and Dizziness

We also offer complementary treatments:

Acupuncture, Reflexology, Massage, Indian Head Massage,
Chinese Herbalist, Lymphatic Drainage and Pumps



Tel: 01525 720882 www.chartered-physiotherapy.co.uk Email: amphillphysio@btconnect.com

7 Station Square, Flitwick, MK45 1DP



The Happy Place.co.uk

On the Green beside the Post Office every Friday, 3.30-7.30pm

We are your local mobile fish and chip van, we have been parked on the green every Friday for the past 6 years. We serve only the highest quality produce, cooked fresh to order and served to you by our friendly staff.

Why don't you pop down and come and Try Our Fry!

To avoid waiting in the cold, give us a call to

place your order on: 07833 786108

A big thank you to all our customers who have loyally supported us over the past couple of years.

Chapman & Kirby Heating

Gas, Plumbing & Heating Installations

Gas Safe Registered

Boiler Servicing & Maintenance



Call us now

Tel: 01525 861255 Mob: 07831 132308

Email: info@chapmanandkirbyheating.co.uk

1C, Old Silsoe Road, Clophill, Beds., MK45 4AR

NEVILLE

FUNERAL SERVICE

Established 1875

Reassurance when you need it most

Serving the people of Bedfordshire since 1875



Neville Funeral Service

inc. George Squire & Sons since 1976

24 Clifton Road

Shefford SG17 5AE

t: 01462 813258

e: shefford@nevillefuneralservice.com



Neville Funeral Service

The Old Church Flitwick Road

Amptill MK45 2NT

t: 01525 406132

e: amptill@nevillefuneralservice.com



www.nevillefuneralservice.com






If you've been thinking about enjoying a great lawn this year – green, lush and weed-free, why not contact us today and let us bring your lawn to life.

We provide four seasonal treatments, as well as beneficial treatments to keep your lawn in tip-top condition - prices start from just £5* per month.

PRICES FROM
£5*
PER MONTH

Ask us about our annual plans, which allows you to both spread the cost and save up to 25%.

GreenThumb
LAWN TREATMENT SERVICE

Simply call: 01234 709345 or
visit: greenthumb.co.uk   

*Based on a lawn size of 40m²

Baths, Toilets &
Showers
Sinks and Taps
Guttering
Leaks and Burst Pipes
Drainage
Handyman jobs also



Silsoe based
No call out fee – free estimates
Fully insured and guaranteed
No job too small
07720 723653 01525 864859
info@betaplumbing.co.uk
www.betaplumbing.co.uk

Washing Machines Dishwashers Dryers Electric Ovens Repairs Servicing Sales



A local family business offering
a quality service at a competitive price
Est. 1981

Tel: CLOPHILL 860148
or Tim Downing direct on 07969 545 276

A member of the White Goods Trade Association
Fully Insured

the
café

AT

W&H PEACOCK
AUCTIONEERS & VALUERS

Visit

www.peacockscfe.co.uk
for more details and to view
our current menu.

Eastcotts Park, Wallis Way,
Bedford, Bedfordshire
MK42 0PE

01234 266 366



**View the salerooms for our upcoming auctions
and then relax with a coffee and a slice of cake.**

Our unique café in Bedford Auction Centre with free wi-fi and
views of the salerooms, comfortably seats over 100 customers.

We serve cooked breakfasts, paninis and sandwiches, light
lunches and snacks plus a range of hot and cold drinks.

Senior Citizen discounts available

Open Monday to Thursday from 8.30am - 3.30pm
Extended opening on Friday to 7pm. Saturday 8.30am - 4pm
(Last orders 1 hour before closing)

LOCAL ALLOY WHEEL REFURBISHMENT


mintalloys
complete alloy wheel refurbishment

Tel:
01525
860069

Alloy Wheel Repairs

Diamond Cut Alloy Wheels Repaired On Site

Powder Coat Primers & Lacquers

Fast Turnaround Alloy Wheel Welding

Tyres At Competitive Prices

NEW for 2015 - 4 Wheel Alignment Service

www.mintalloys.co.uk

Root 'n Branch

Your Local Friendly & Reliable Gardener

All aspects of Garden Maintenance undertaken
• PRUNING • MOWING • WEEDING • PLANTING • HEDGING

Southfields, Shefford
email: whooley@hotmail.co.uk

Tel: 07771 537385

Public Liability
Insured

Conifer
Kennels

Quality
BOARDING
DAY BOARDING
HOLISTIC FOOD SHOP
GROOMING & GOING HOME BATHS
OFF SITE NATURE WALKS
QUALIFIED TEAM



nutriment
ENHANCED raw diet formula

www.coniferkennels.co.uk

01525 860339



The Causeway, Clophill, Beds. MK45 4BA

Akela

WILD WASH

YAKERS

SKIPPER'S

Eden
Holistic Pet Foods

GREEN & WILDS
Naturally for pets

Pre-Order
Service Available

STUART DREW ELECTRICAL SERVICES

MEMBER OF THE ECA
PART P CERTIFIED QUALIFIED TO 18TH EDITION

From extra lights & sockets, to re-wires. Fault finding and electrical safety certification. For a professional, courteous service with free estimates & all work guaranteed, please call me

29 Lincoln Way
Harlington
Beds
LU5 6NG

Fully qualified & insured
30 years experience

Telephone:
01525 875965
07941 812662



Compu-Doc

PC / laptop crisis ?

01525-402227

Call the Doc for -

Hardware & software

Diagnosis & treatment

john.stafford@compu-doc.co.uk

BURGLAR ALARMS

New Alarms Fitted or Upgrade Existing Alarms

BURGLAR ALARMS

We fit New Alarms - Wired or Wireless Systems

We can service and maintain your existing alarm

CCTV

We fit high quality systems to maximise your security.

Access your CCTV via the internet or mobile.

DOOR ENTRY

We fit a range of quality video and audio intercoms to suit your needs.

We are a family run business with over 35 years experience in home security and crime prevention.



www.maximumsecuritysystems.co.uk

Contact:

01582 864138 / 07746 111520

For a free quote and consultation

McCaffrey

Your local resource for residential build, refurbishment and maintenance



General building works

Extensions

New builds

Internal refurbishment/alterations

Brickwork

Carpentry

Painting & decorating

Purpose made joinery

Plumbing and heating

Electrical installations

UPVC windows & doors

Garage conversions



call us to discuss your building requirements

01525 861041

info@mccaffreybuild.co.uk www.mccaffreybuild.co.uk

ADAM IN YOUR GARDEN

**TREE SURGERY, HEDGE TRIMMING,
TURFING, FENCE MAINTENANCE,
DECKING, PATIO CLEANING**



Qualified, Fully Insured, Competitive Rates
Free Estimates

TEL: 01582 518954 MOB: 07828 490360

Web Site: www.adaminyourgarden.co.uk



Based near Toddington, Bedfordshire.

We rescue, rehabilitate & re-home stray & abandoned cats.

We have lots of beautiful cats waiting for loving homes.

Ring the shelter on 01525 875993

or Sue on 01582 650167 to arrange a visit.

Registered Charity No. 1098984

Visit our website @www.straycatrescue.org.uk



EST.
1989

- Suppliers of traditional and modern equipment
- Working whirlpool & spa baths, power & steam shower systems on display
- Over 40 settings on display
- Complete installation service if required
- Personal friendly service from a family run business
- Wall and floor tiles
- Accessories
- Mirrors
- Bathroom furniture
- Heated towel rails
- Saunas
- Bathroom cabinets

SHEFFORD 01462 627002

www.bathroomvogue.com

Unit 4A, Shefford Industrial Park, St Francis Way, Shefford SG17 5DZ

Hire Clophill Village Hall



Wedding Receptions
Birthdays & Special Occasions
Dances and Discos
Club & Community Meetings & Activities

Phone: 07821 643 936

Mail: Clophill.villagehall@gmail.com Web: www.clophillvillagehall.co.uk

ROGER STOREY

YOUR LOCAL PAINTER AND DECORATOR

Friendly and Reliable Service

Many Years Experience

Please phone: **01525 861253** or **07800 777615**

ANDREW BAKER WINDOWS

9 SHEFFORD ROAD
CLOPHILL BEDS
MK45 4BT

SPECIALISING IN UPVC WINDOWS,
DOORS, CONSERVATORIES,
FASCIA, SOFFITS, GUTTERS AND
CLADDING. ALSO AVAILABLE FOR CARPENTRY
WORK. NO JOB TOO SMALL OR LARGE.

20 Years experience.
Free local quotes.

FENSA

Fensa Registered
FIVE YEAR GUARANTEE

Contact Andrew: 01525862804 / 07825017855

Email: abakerwindows@gmail.com

Advertisers index

Architectural Services

S&S Coates Surveying & Design 22

Auctioneers & Valuers

W&H Peacock 25

Bathroom Services

Bathroom Vogue 34

Builders & Carpenters

McCaffrey Build 33

Stuart Benson Building Projects IFC

Car Services/Repairs

A&F Motors Ltd IFC

Mint Alloys 31

TC Coomber Car Services BC

Chimney Sweep

Poppins Chimney Sweep IBC

Cleaning Services

Ovenclean 19

Computer Services

Compu-Doc 32

The Computer Man 25

Electrical Services

Stuart Drew Electrical Services 32

Financial Services

AIMS Accountants 24

ET Accountancy Services 20

Hills-Howson Financial Services 24

MB Accounting Services 36

SJ Tax & Accounting Services 17

Food and Refreshments

The Cafe at Peacocks 31

The Happy Plaice 28

Funeral Services

AL&G Abbott, Funeral Directors 23

Neville Funeral Service 29

Garden Services

Adam in your Garden 34

Garden Doctor 27

Green Thumb Lawn Treatment 30

JK Garden and Landscape Services 16

Root 'n Branch 32

Health & Beauty

A Cut Above Hairdressing 17

Ampthill & Flitwick Physiotherapy 28

Doula Root 18

Hairs & Graces 27

Linda Allsop Physiotherapy 17

Nicola Rayner Fitness 20

Route 66 Barbers 18

Slimming World 21

Tammys' Talons 16

Home Improvements

Christopher The Painter 16

Roger Storey - Painter & Decorator 35

Music and Entertainment

Greensands Community Choir 15

Nursery Schools

Clophill PreSchool BC

Clophill St Mary's C of E

Acorn Lower School and Nursery 21

Pet & Animal Services

Conifer Kennels & Cattery 32

Lizzie Brown Pet Care 26

Personal Dog Walker 17

Stray Cat Rescue 34

The Bluecat Luxury Cattery 19

Plumbing & Drainage Services

Beta Plumbing 30

Chapman & Kirby Heating 28

Warm Property Services 19

Print Services

Fidelity Design & Print IFC

Public Houses

The Stone Jug 18

Repair Services

Tim Downing Repair Services 30

Security Services

Maximum Security Systems 33

Travel Services

Select Travel Holidays 22

Tuition and Coaching Services

Rincon Tuition (Spanish & Maths) 26

TalkEasy Coaching 16

Village Hall

Clophill Village Hall 35

Windows/Replacement

Andrew Baker Windows 35

AW Windows IBC

Misty Double Glazing 19

IFC = Inside Front Cover IBC = Inside Back Cover BC = Back Cover

MB

ACCOUNTING SERVICES

accounting solutions for the
Self-Employed and **Small Business**
 including

HMRC tax returns • Accounts • Bookkeeping

For a totally confidential service at **very competitive rates** contact
 Richard Fairholm T: 01525 861087 M: 07714189994 E: mbaccounts@btinternet.com



Poppins Chimneys

**Chimneys Swept
Wood and Multifuel Stove
Installation & Liners**

Great Service - Great Price!



01525 860424 or 07858 688785
mark@poppinschimneys.co.uk

**NO PRESSURE SALES – YOU DEAL WITH
THE OWNER FROM START TO FINISH**



- ✓ A-rated windows as standard
- ✓ Composite doors
- ✓ High security
- ✓ Bifolding doors
- ✓ Conservatories
- ✓ Fascias, soffits and guttering
- ✓ Insurance-backed guarantee
- ✓ Fensa certificate



Contact: ANDY WOOD

01582 536944 or 07796 272539
sales@awwindows.co.uk



See reviews from satisfied customers at awwindows.co.uk

Clophill Preschool

**Your local Outstanding Preschool,
based at Clophill Village Hall -
welcoming children from
2 years of age.**

We'll help your child to become an inventive
and creative learner. With access to a fantastic
outdoor area, our focus is on natural and
exploratory 'play with a purpose'.



**Call us today to find
out more:
07765 887868 or
07936 006381**

www.clophillpreschool.co.uk

The background of the advertisement is a photograph of a classic blue car driving on a road, with a large tree on the right and a blue sky. In the top left corner, there is a logo for 'TLC Coomber' featuring a red car. In the top right corner, there is a blue square logo with a white geometric design.

TLC Coomber

**MOT'S CLASS 4/5L/7
CAR SERVICING & REPAIR
TYRES & EXHAUSTS
AIR CONDITIONING
DIAGNOSTIC CODE READING**

**Collection
& Delivery**
SERVICE AVAILABLE
Please ask

AMPTHILL
01525 406330

UNIT F, AMPTHILL INDUSTRIAL ESTATE, STATION ROAD, AMPTHILL, MK45 2QY