

Vol 41 | No.7

FREE

# CLOPHILL SPOTLIGHT

SEPTEMBER 2019



**LOVE YOUR  
LOCAL NEWS**

# AMPTHILL PRINT CENTRE

**DIGITAL PRINTING  
DESIGN & MARKETING  
DIRECT MAIL**

*and much more...*

...and we're right on your doorstep at

Unit 24 Station Road Ind Est, Ampthill, MK45 2QY  
(Just off the A507 Ampthill bypass, past the Post Office)

#### WE PRINT...

- Stationery
- Newsletters
- Menus & Tent cards
- Brochures
- Flyers & Leaflets
- Catalogues
- Books & Booklets
- Direct mail
- Training Manuals
- Banners & Posters
- Greeting cards
- Calendars
- Labels & Stickers
- NCR pads
- Folders
- Exhibition panels
- CD/DVD duplication
- Photocopying

3 DAY STANDARD SERVICE | SAME DAY AVAILABLE

[www.fidelityprint.co.uk](http://www.fidelityprint.co.uk)

Get a quote 01525 300001 [quotes@fidelityprint.co.uk](mailto:quotes@fidelityprint.co.uk)

**fidelity**<sup>®</sup>

Unit 24 Station Rd Ind Est, Ampthill



## MOTORS LTD

**Tel: (01525) 860292**

**Tel: (01525) 404919**

**208 Clophill Road, Maulden, Bedfordshire MK45 2AF**  
**89 Oliver Street, Ampthill, Bedfordshire MK45 2SA**

**CAR AND COMMERCIAL VEHICLES  
ALSO CLASSIC & AMERICAN CARS  
SERVICING – REPAIRS – BREAKDOWN  
SPRAYING – M.O.T.**



### **Stuart Benson Building Projects**

**Design, Build and Maintenance including Interior Refurbishments,  
Kitchen / Bathroom fitting, Tiling, Flooring, Skirting boards, Doors  
Garage conversions. Exterior Decking, Patios, Driveways  
Garden Offices/ Sheds**

**Tel: 07946 579862 or 01525 403083**

**Email: [benson.stuart@.googlemail.com](mailto:benson.stuart@.googlemail.com)**



## A word from the Editor...

### *We're back!*

I hope you all had a wonderful summer , if a rather hot one at times.

What an unexpected and destructive storm on the August 27th, it was quite a talking point the next day! As I was watching the howling winds, rain and hail, the weather websites showed us basking in the sunshine – hey ho. So we are back now for the rest of the year, with news and events going on in and around the village.



The Parish Council report has had to be removed for the foreseeable future as there is no-one to write it; I have replaced it with a new section "Recent Planning Applications" downloaded from Central Beds website. I hope you find this useful (any other suggestions are always most welcome).

Best Wishes, Elaine



## The magazine staff

EDITOR	Elaine Jones editorial@clophillspotlight.co.uk	07918 975823
ADVERTISING MANAGER	Emma Frost ads@clophillspotlight.co.uk	
DESIGN MANAGER	Chris Abrahams cmabrahams@yahoo.co.uk	
DISTRIBUTION MANAGER	Pete Liddle	860113
TREASURER	Richard Pearson	861110

***Deadline for articles is 20th of the month***

You can also read Spotlight online  
**[www.clophillspotlight.co.uk](http://www.clophillspotlight.co.uk)**

## CLOPHILL VILLAGE HALL EVENTS

The Original and first ABBA Duo performing all of ABBA's  
greatest hits in one spectacular night of music!



**Saturday 16th November**  
**7:30pm - 'Til Late**

**£10 Adv • £12 OTD**  
**Fully Licensed Bar • Large Dance Floor**

## RACE NIGHT



**Saturday 12th October**  
**7:30pm Start**  
**£5 Entry**

**Bring Your Own**  
**Drinks & Nibbles**

**Tickets & Info**  
Call Steve on 07831255807  
or email [steve.langhorn@  
gmail.com](mailto:steve.langhorn@gmail.com)

**Clophill Village Hall,**  
**Bedfordshire, MK45 4DA**

**Ample free parking available**  
**onsite**



# Clophill Preschool News

Hi everyone - we hope you have all enjoyed the summer. We seem to have had hot, cold and everything in between, but it didn't stop us doing our **gardening club** every Friday throughout the holidays.



We were very fortunate that our parents whose children move to schools this year surpassed themselves as usual and kindly donated some money to us as a **leaving gift**. We used some of it to **buy plants and an arch for the garden**. With the help of parents and children, some from past some from present, our outdoor area is looking very well-tended and much more colourful than ever before! To add to our space we have been given a fabulous **wooden seesaw** by Grace. We have also built our new **picnic benches** and

created our **investigation shed** filling it with bug pots, binoculars, information cards etc. Our **new arch**, soon to be decorated with wellies, is the gateway to the mud kitchen and acts as a reminder to get kitted out before you go in! It is nice and wide so that wheelchairs can access too.

The end of term was a wonderful, if soggy, day. We said **goodbye** to many who have been with us for a long time, but everyone is always welcome to visit and keep in touch at preschool. We also said goodbye to Julie who has been part of preschool since the very early days, she is off to further develop her theatre company, but promises to help when she can. Our new team member, **Michelle**, joins us this month and our team is stronger than ever just as we are **busier than we have ever been**. It's great to know that our fabulous parents are spreading great words about us.



We have a lot of **new children** starting this term and next. It was fantastic to see some of them, as well as many we know already at our **Friday Fun Day** which was a huge success. It was great for children and parents to be able to get a little taste of what we offer: from the mud kitchen to the climbing tyres, from the basket swing to the climbing logs, from the woodland glade to the bug house, the outdoor shelter to the sand pit, the gravel pit to the allotment. All these things help us to enable our children to explore, develop and learn. Our staff are there to support, engage and enhance this process, so that **all our children become confident and happy to take on challenges and manage their own risks and thrive in every way**.

Do join us for our Stay and Play mornings, 9:30-10:30 every Tuesday starting 10th September.

- Contact Imogen on **07765 887868** or Chris on **07936 006381** or email [clophillpreschool@gmail.com](mailto:clophillpreschool@gmail.com). Our website is [www.clophillpreschool.co.uk](http://www.clophillpreschool.co.uk)

# **Volunteering and Fundraising For Marie Curie**

**Would you and a friend like to find out information on the fundraising and volunteer opportunities in Bedford?**

**Come along to the Scott Hall on Barford Avenue, MK42 0DX  
4pm-6pm on Tuesday 17<sup>th</sup> September 2019**

**Come and find out information about;**

- Information about Marie Curie
- Opportunities to volunteer for Marie Curie
- Opportunities to fundraise for Marie Curie including information on our Bedford Fundraising Group

**If you would like to attend then please contact Peter by email on [peter.sara@mariecurie.org.uk](mailto:peter.sara@mariecurie.org.uk) or by phone on 07887 625449**



Registered with  
**FUNDRAISING  
REGULATOR**

Care and support  
through terminal illness

Charity reg no. 207994 (England&Wales), SC038731 (Scotland) C810a

# News from Clophill Heritage Trust

We have had a busy summer maintaining and improving the Eco Lodge site and welcomed some new volunteers to CHT; we are especially thrilled with the new giant bug hotel that doubles as a wall that has been installed. We hope this will provide homes for many different species of insects as well as looking amazing! It has been built completely from recycled and reclaimed natural materials and features pallets, tiles, cut logs, rubble and cut branches to ensure many different environments are offered for different species.

We are thrilled to announce that we have been awarded a Gold Award from Green Tourism for our Eco Lodge accommodation. Green Tourism are the leader in green grading for accommodation providers and have rated over 2000 eco-friendly venue providers in the UK and abroad. For more information about their ethos and to search for your next eco-friendly holiday see [www.green-tourism.com](http://www.green-tourism.com)



September is here and with it our busiest event season. Following on from our guided walks we have foraging workshops, trails & tales evenings and of course, the Pumpkin Festival! If you would like to take part in any event, or volunteer to be a helper, please contact either Emily or Louise on 07935 911207, for a full list see [www.clophillecolodges.co.uk/events](http://www.clophillecolodges.co.uk/events)

Remember our blogs are posted on our website [www.clophillecolodges.co.uk/cht-news](http://www.clophillecolodges.co.uk/cht-news) each month, so please do have a read.

**For info call 07935 911207 or email [info@clophillecolodges.co.uk](mailto:info@clophillecolodges.co.uk)  
[www.Facebook.com/ClophillEcoLodges](https://www.facebook.com/ClophillEcoLodges)**

## Thursday Leisure Club (TLC)

Clophill has a club, which runs on a Thursday (as denoted in the title)! You may have read in the June Spotlight, it started back in May, so has been going for four months now. It is in the afternoon - from 2pm to around 4pm – based in St. Mary's church and run through Clophill Community Care (CCC). TLC is for folk, young or older, who fancy an afternoon out and want to do something gently active, as well as to have a chat with friends. There are various games and activities on offer – jigsaws & Scrabble are current favourites, but Rummikub is a close third! Chess, dominoes, colouring and even carpet bowls are also on offer. We do need suggestions for other activities we can provide. A knitting group and /or a book group have been suggested as other ideas so far.

The first of our 'specials' will be on September 26th and October 3rd when Carolyn Cranswick will direct the making of a large Harvest Loaf made from dough. This will run alongside the other activities, so if you don't fancy getting dough down your nails, it is not compulsory!

There is tea, coffee and 'very nice' biscuits (especially if you like chocolate gingers) to enjoy as well. If you would like to join us, please just turn up - or if you need transport please phone our CCC number 07791 773705 and someone will come and collect (and return) you. There is no 'fee', but we do suggest a donation of £1 to help cover any charges from the church, and the refreshments.

So, if you fancy some TLC, come along to St. Mary's church on a Thursday afternoon. Also, don't forget that CCC provides a range of help to villagers, especially transport to and from medical appointments.

# WARDEN ABBEY



*The community vineyard*

## OPEN DAY & WINE SALE

- Guided Vineyard Tours\*
  - Free self-guided Tours
  - Wine Sales and Wine classes\*
  - History Display
  - Local Artisan Food and Craft Stalls
  - Petting Farm
  - Children's activities
  - Morris Dancing
  - BBQ & refreshments
- \*additional charge for talks and guided tours

**SUNDAY  
8th  
SEPTEMBER**

**11 am  
until 4 pm**

**£3 entry Adults  
Free for children  
Free Parking**



We are between Old Warden and Cardington. See website for map, times of tours & tastings.  
[www.wardenvineyard.org.uk](http://www.wardenvineyard.org.uk)

**"A Bedfordshire  
Rural Communities  
Charity project"**



# Come into the Garden

with Kate Gardner



This summer seems to have flown by with both warm and wet and hot and dry spells which all prove challenges for our gardens. Just because the schools have gone back to the autumn term, it doesn't mean that summer has to be finished in the garden yet!

Here are five easy garden jobs for September to make sure your garden is full of flowers and to give it a late summer boost! Summer may be slowly departing but many plants will keep flowering until the frosts if they are well looked after.



Agapanthus

The cooks among you may well have been taking a leaf out of Nadia's Time to Eat series recently, where she is keen to encourage us all to use some time saving cheats when we are preparing our meals. Those same time saving principles can also be used in our gardens. Probably the quickest way to **add instant colour** to your garden is to look out for some colourful bargains in the garden centre, to give your garden an instant improvement. Summer bedding plants are being sold off cheaply to make way for autumnal plants but they can still provide colour for at least another two months. Snap up **tender fuchsias**,

**pelargoniums** (often sold as 'geraniums'), and **osteospermums** and use them to fill gaps in pots or around the patio. Plant up areas close to your outdoor eating and seating areas, so that these are the most colourful parts of the garden as you enjoy the end of the summer.

Trailing petunias, fuchsias and ivies can get too big for their space in containers and pots so **trim back leaves** to avoid your container displays looking top heavy or lop sided. It's also a good idea to trim back any plants that have crowded out other plants in pots, so that you can see every plant in the display. Don't forget to make sure you keep dead-heading all your plants to encourage more flowers to follow the old ones.

If you have been growing roses in your gardens they may well have some old, tired looking leaves now. **Get rid of yellow and diseased leaves** and your plants will look better instantly. They are so easy to remove, just pull down on the leaf stem and it will easily break away from the main stem of the plant. Pull off yellowing and diseased leaves and snip off any that are surrounded by healthy leaves. Put them in the bin, then stand back and admire a healthy lush green plant that can still have more flowers to come.

**Water and feed** summer flowering plants in pots to get as many blooms from them as possible. It may be September but summer displays in pots can keep looking good up until the first frosts. Plants such as **pelargoniums**, **nemesia**, **roses** and **fuchsias** have lots more flowers in them if you give them a bit of TLC. Check the compost in the pots by pushing your finger into it. If the compost is dry all the way down, then it needs a good soak. Add a general fertiliser such as liquid seaweed to your watering can before watering, to give your plants a late boost of nutrients.

**Sow hardy annuals** such as **calendula**, **larkspur**, **nigella** and **honesty** direct into the soil in the garden now, to create a mixed display for next year. Mix together all the seeds with some sand and sow them over a bare patch of soil to create a riot of colour early next summer. Make sure the soil is weed free before sowing and rake it level. Sow the seeds and then gently rake them into the soil, before watering well. Label the area after sowing so you don't forget about them. **Happy Gardening**

## **BARGOOSE**

**(Dr Simon P Hughes and Partners)**

**Patient Participation Group**

**Would like to invite you to**

### **A HEALTH EVENING**

**Come and meet our own doctors,  
practice staff, and a visiting  
eminent speaker.**

**The speaker will focus on the issues  
facing the wider family and carers  
of dementia patients.**

**Our doctors will be answering a wide  
range of questions put forward by  
patients.**

**On**

**THURSDAY 26 SEPTEMBER**

**7.30 pm – 9.30 pm**

**at**

**SILSOE VILLAGE HALL**

**Everyone welcome**

**Refreshments will be provided**



## **Grand Jumble Sale**

**We will be holding our next Grand Jumble Sale on  
Friday, October 4th 2019, at Clophill Village Hall.**

The doors will be opened at 7.00pm. Entry will be charged at 40p per adult, accompanied children are free. Refreshments available.

All profits are donated for the direct benefit of the Residents at the  
**Leonard Cheshire DisABILITY Home in Ampthill.**

*If you have any good quality jumble for us or would like to help  
at the event please call 01525 861110*

We look forward to seeing you there.

**Clophill Friends of the Leonard Cheshire Disability Home at Ampthill**

# Clophill & District Flower Club

Our last meeting in July, before the summer break, brought a welcome return to Clophill of Joyce Fursessedonn with her demonstration "My Colouring Book". Joyce, accompanied by her husband and willing 'gopher' Micky, hails from Knebworth and is a very popular demonstrator. She



concentrated her designs around all the colours found in a pencil box and complimented all the quality flowers she used with a great variety of foliage from her own garden.

We were so glad we had booked her this year as she told us during the evening that she will not be continuing to do demonstrations after December. A great loss to all the clubs in the Home Counties Area and beyond. What we like about Joyce is that her designs are manageable to imitate, even for less experienced flower arrangers, and you don't need a removal lorry to get them home if you win one in the raffle! One of her designs followed the current lead of NAFAS to help the environment by arranging without using floral foam. Using a cube shaped slatted wooden



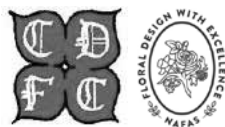
box (made by Micky) and lined with perspex to make it watertight, she placed chicken wire in the top and arranged her flowers in it to great effect. In this instance the whole design went into the raffle. All Joyce's designs were worth winning and we will be sorry not to see her gracing the stage of the Village Hall in the future.

There was no club meeting during August but many members went on a trip during the month to Islington to see the "Floral Art & Design Show" which was organised to celebrate the Diamond Anniversary of NAFAS. Arrangers and designers from both the UK and overseas created the most spectacular displays which were a fitting tribute to the Association and a wonderful sight to see by those people visiting.



Back at the Village Hall on 5th September Lisa Osborne came with her demonstration entitled "**Fabulous Fusion**". A report on this demonstration will appear in the October issue. On 3rd October we have a jolly practical evening when we are creating "**Seasonal Delights**" with guidance from some of our very experienced committee members. Then on 7th November we have the return of Theresa Rodrigues (a regular Gold medal winner at Chelsea) with her demonstration "**No humbugs allowed!**". Do come and join us at the village hall each month. We start at 7.30 pm (doors open 6.45 pm). It is only £5.00 for visitors which includes tea/coffee/biscuits half-way through the evening. You'll be glad you did. See you there for a lovely relaxing evening and to watch something a bit different from what's on TV!

*Joan Palmer – Club Secretary*



# CLOPHILL VILLAGE HALL



**20% off for Clophill Residents\***

## **The perfect place for the ultimate gathering!**

Clophill Village Hall is set in stunning surroundings on the outskirts of the beautiful village of Clophill.

The Hall is an ideal location for social occasions including weddings, christenings, birthday parties etc or business events accommodating up to 212 people for meetings and dances and 117 seated for dining

- Fully fitted kitchen
- Fully serviced bar
- Separate meeting room
- Disabled toilet with baby changing
- Paved outdoor patio area
- Outdoor children's playground
- Large outdoor space
- Ample free parking



We have a choice of long or round tables plus chairs free of charge. In addition, we can supply tablecloths, plates, cutlery at a nominal cost to hirers.

**Call 07821 643936 or email [clophill.villagehall@gmail.com](mailto:clophill.villagehall@gmail.com) for more details. \*Subject to availability and hire conditions**

# Clophill Toddler Group News



Clophill Toddler Group welcomes all babies and toddlers from 0-3 years old on a Friday morning from 10am - 11.30am. We provide a safe and fun environment for the children to play and grow. Plenty of fun toys for all ages with a specific area for smaller babies (including bouncers and play mats) so that all adults get a chance for a hot drink and a chat! We provide healthy snacks for the children during the session and also have some singing at the end to wind down.



Summer Term for our babies and toddlers included a fabulous (but soggy) trip to the farm and more amazing out door messy play with Clophill Preschool. These play sessions always go down well with all ages. Babies were able to explore the sand pit, feeling the sand through their toes and the more adventurous children had great fun climbing, swinging and washing muddy dolls!

We also had our Summer Party with plenty of bubbles, games and a treat of ice cream at the end. We were sad

to say goodbye to some of our older children who are joining preschools and nurseries full time this September.

We are looking forward to our new Autumn term starting, hoping to see lots of new faces and of course our regular members too, ready for the upcoming months with our crafts, baking, outdoor fun and of course plenty of toys!

We are also looking for more members to join our committee. The group is run by volunteer family members and as our children move on from the setting so do we!

If you can spare an extra half hour before and after the session once a month to help set up and put things away, help with crafts or look after new members, then we would really appreciate having you on board.



If you're considering coming along for the first time please don't feel nervous. The first session you attend is free and we are a very welcoming and friendly group. Follow us on Facebook to see what we're up to, or send us a message.

- [www.facebook.com/Clophilltoddlergroup](https://www.facebook.com/Clophilltoddlergroup)
- [chaz\\_messer@hotmail.com](mailto:chaz_messer@hotmail.com) – Clophill Toddler Group Chairperson



**A COMMUNITY TRANSPORT OFFERING FOR THE AREA. ALL  
VEHICLES ACCESSIBLE FOR THOSE WITH REDUCED MOBILITY**

Connecting our Communities in



## **3 simple steps to flexible travel!**

**Join the scheme • Book your journey • Travel!**

**Amphill, Biggleswade, Cranfield, Flitwick, Harlington,  
Marston, Potton, Sandy, Silsoe, Stotfold, into Bedford & all  
points in between**

For more information:

call **01234 834933**

or email **[communitytransport@bedsrcc.org.uk](mailto:communitytransport@bedsrcc.org.uk)**

**Central  
Bedfordshire**



# St Mary's Church News



The summer months are usually quiet at St. Mary's, but this year 2 major stories have unfolded.

## Rev. Dean Henley retires

At the Benefice Service in Haynes on June 30th, our Rector, the Revd. Dean Henley announced that he would be taking early retirement at the end of September. This came as a complete surprise to most of us, as he is still only in his 50s. However we know that during the past few months it has been difficult for him to balance his duties here in Campton, Clophill and Haynes with the needs of his increasingly frail parents in Lincolnshire, and he has decided he must put them first.

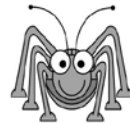
Dean came here in October 2006, and he has served his parishes faithfully for 13 years. His last service in Clophill will be Parish Communion on Sunday September 8th at 10.45 am, all are welcome to come and bid him farewell. His very last service will be a joint Benefice Service on Sunday September 29th at 11.00am in Campton, at which you will be equally welcome.

The parish will probably be in vacancy for a long time as our Deanery is undertaking a 2 year consultation and reorganisation. But services at St. Mary's will continue as usual and you will be able to have your baptisms, weddings and funerals as always.

## Church Fundraising

The other story concerns the actual fabric of the church. The Diocesan architect has said the whole church needs repointing and the boundary wall needs attention. This will cost **approx. £40,000**, which we must raise to protect our beautiful and much loved church. We very much hope that the people of the village will help us to raise this formidable sum.

**CLOPHILL METHODIST CHURCH**



# BEETLE DRIVE

**Saturday 12th October, 6.30pm**

**Adults £5, children £2.50**


**Refreshments**

**In aid of Clophill Methodist Church**

**Tel: 01525 860695**



# What's on in and around Clophill

SEP		<b>Sunday 8th</b> <b>Harvest Festival service</b> Clophill Methodist Church, 10:30am
		<b>Saturday 28th</b> <b>MacMillan Cancer Support coffee morning</b> Clophill Methodist Church, 10am to 12noon
OCT		<b>Friday 4th</b> <b>Jumble Sale in aid of Leonard Cheshire Home</b> Clophill Village Hall, 7pm
		<b>Saturday 5th</b> <b>Coffee and Croissant morning</b> Clophill Methodist Church, 10am to 12noon
		<b>Saturday 12th</b> <b>Beetle Drive</b> Clophill Methodist Church, 6:30pm. <i>See poster in this issue</i>
		<b>Saturday 12th</b> <b>Race Night</b> Clophill Village Hall, 7:30pm. <i>See poster in this issue</i>
NOV		<b>Saturday 16th</b> <b>Abba Girls</b> Clophill Village Hall, 7:30pm. <i>See poster in this issue</i>

## On throughout the month...

### Wednesdays...

- **Tea and Chat** 10.30 to noon, Methodist Church

### Thursdays...

- **Thursday Leisure Club** 2pm, St Mary's Church

### Fridays...

- **Clophill Toddler Group** 10am-11.30am, Village Hall, See 'Village Groups' for contact details

### One Saturday a month...

- **Messy Church** 4pm-6pm, Clophill Methodist Church. Dates: Sep 14; Nov 16; Dec 14. See 'Village Groups' for contact details.

### CHURCH SERVICES

#### Regular services at St Mary's Church, Clophill

1st Sunday	8am, Holy Communion; 10.45am, Family Praise
2nd & 4th Sundays	10.45am, Parish Communion
3rd Sunday	10.45am, Morning Prayer/Praise
5th Sunday	10am, Benefice Services

#### Regular services at Clophill Methodist Church

1st, 2nd, 4th, 5th Sundays	10.30am Morning Service
3rd Sunday	10.30am All Age Worship Service

If you have any diary dates that you would like included on this page, please email [clophillspotlight1@hotmail.co.uk](mailto:clophillspotlight1@hotmail.co.uk)

## CLOPHILL METHODIST CHURCH

# COFFEE & CROISSANT MORNING



ALL PROCEEDS IN AID OF CLOPHILL METHODIST CHURCH

10AM TO 12 NOON

£1:50

SATURDAY 5<sup>th</sup> October



# Parish Registers for September

**1819**

## Baptisms

Sep 10 Eliza, daughter of John & Alice Chipperfield, father a farmer  
Charlotte, daughter of John & Charlotte Palmer, father a victualler

## Burials

Sep 10 Susannah Abrams

**1869**

## Baptisms

Sep 5 ? parents Daniel and Ann Rust (?)  
Also Ann, William and Ruth.  
Arthur John Willmore

## Burials

Sep 13 Sarah Roberts, 41  
Sep 22 Ada Upton, infant

**1919**

*No registers recorded*

**1969** (back in St Mary's Church)

## Baptisms

Sep 7 Bruce Nigel Drury  
Sep 21 Claire Dawn Hawkins  
Sep 28 Tara Dawn Janes

## Burials

Oct 10 Arthur Izzard, 84

## ST MARY'S CHURCH REGISTERS FOR JULY

### Funeral

July 18 Kreena Elizabeth Geere, 87



Bedfordshire  
Cambridgeshire  
Northamptonshire

## Wildlife walks & talks



## Fungal Foray with Alan Outen

**Sunday 22nd September: 10.00-12.30**

**Folly Wood Car Park, Flitwick Moor**

A combined event with the Herts and Beds Fungi group (HBFG). We are hoping for a mix of damp and mild weather to guarantee a good showing of mushrooms and toadstools. Alan will help you identify your findings and tell you more about the wonderful, and sometimes weird world of fungi. **Free but donations welcome.**

## Seed Collection with Colin Carpenter

**Saturday 5th October: 10.00-15.00**

**Kings Wood, Ampthill**

Colin, a local tree expert, will guide us in this collection of berries and seeds from shrubs and trees. These are then cultivated by volunteers at the Tree Nursery in Clophill to provide new trees for local woods and hedgerows. Equipment is provided but you may like to bring your own secateurs and gloves. It is a good way of learning about our native tree species. **Free but donations welcome.**

Open to all. Walks have group size limits so please book.

For bookings or additional information please email [flitvale.info@gmail.com](mailto:flitvale.info@gmail.com)  
or ring Ann on 075801 78889 between 6pm and 8pm or at weekends.

# Recent Planning Applications

Central  
Bedfordshire

**CB/19/02687/FULL** Registration Date: 19/08/2019

Location: Land to the rear of the Green Man Pub, The Green, Clophill

Proposal: Erection of 2 single garages and fence with gated access to existing dwellings.

**CB/19/02188/FULL** Registration Date: 09/08/2019

Location: 11 Tanqueray Avenue, Clophill

Proposal: Two storey rear extension and first floor side extension.

**CB/19/01826/FULL** Registration Date: 17/07/2019

Location: Hill Top Farm, 22 Back Street, Clophill

Proposal: Replacement annexe.

**CB/19/02267/VOC** Registration Date: 12/07/2019

Location: Hard Earnt, Kiln Lane, Clophill

Proposal: Variation of condition number 2 of application CB/19/00422/FULL  
(Replacement dwelling and installation of solar panels to rear garden).

**CB/19/01806/LDCP** Registration Date: 02/07/2019

Location: 15 The Green, Clophill

Proposal: Lawful Development Certificate Proposed: change of use to house (C3)  
to house of multiple occupancy (C4).

**CB/19/01862/FULL** Registration Date: 14/06/2019

Location: Land including and to the rear of 68 and 66a High Street, Clophill

Proposal: Proposed demolition of 66a High Street followed by the erection of 5 no.  
dwellings including the creation of a new priority junction and access road,  
as well as associated landscaping and ancillary works.

The next Parish Council meeting will take place at the Village Hall  
at 7.45pm on Tuesday 10 September

**CLOPHILL METHODIST CHURCH**  
**& ST MARY'S CHURCH**

**INVITE YOU TO OUR COFFEE MORNING**



**IN AID OF MACMILLAN CANCER SUPPORT**

**HAVE YOUR  
CAKE  
AND EAT IT**



**WE ARE  
MACMILLAN.  
CANCER SUPPORT**

**PLEASE COME AND JOIN US ON  
SATURDAY 28<sup>th</sup> SEPTEMBER  
CLOPHILL METHODIST CHURCH  
10:00 AM TO 12 NOON**



# Useful numbers

<b>Gas</b> (Emergency)			0800 111999
<b>Electricity</b> (Emergency)			0800 7838838
<b>Emergency Fire/Police/Ambulance</b>			999
<b>Water/Sewage</b> (Anglian Water)			0845 7145145
<b>Telephone</b>	(Customer Services) 150	(Faults)	151
<b>Highways Department</b> (Central Bedfordshire Council)			0300 3008049
<b>Benefits Agency</b> (Bedford office)			01234 361500
<b>Registrar's Office</b> (Births/deaths/marriages)			0300 3008089
<b>Rail</b> (Enquiries)			0845 7484950
<b>Buses</b> 01234 262151	(Link A Ride) 01525 840511	(Flittabus)	01582 406561
<b>Luton Airport</b>			01582 405100
<b>Swimming</b>	(Flitwick) 01525 717744	(Robinson Pool)	01234 212479

## LOCAL GOVERNMENT

<b>Central Beds Offices</b> (Chicksands)			0300 300 8000
<b>Mid-Beds MP</b>		Nadine Dorries	01462 811992
<b>Central Bedfordshire Councillors</b>		Michael Blair	01525 404513
		Paul Duckett	07988 184061
<b>Clophill Parish Council</b>	(Clerk)	James Stirling	01462 887226

## HOSPITALS

<b>Bedford</b> (North & South)	01234 355122	Admissions	01234 261150
		Appointments	01234 359012
<b>Luton &amp; Dunstable</b>			0845 1270127

## DOCTOR'S CLINICS

<b>Ampthill</b>	(Houghton Close) 01525 300898	(Oliver Street)	01525 631395
		(Greensands)	01525 631390
<b>Shefford</b>	Enquiries 01462 818620	Appointments	01462 810034
<b>Barton</b> 01582 528700		<b>Flitwick</b>	01525 715300

## POLICE

<b>County Police HQ</b>		Non Emergency	101
<b>Ampthill Station</b>			01234 841212
			101

## CHURCHES

<b>St Mary's Parish Church</b>		Revd Dean Henley	01234 381235
	(Church Warden) Rosemary Ilett	mandrilett@ontel.com	01525 860274
<b>St Francis RC Church, Shefford</b>		Ian Gordon	01525 860875
<b>Clophill Methodist Church</b>		Jim Davies	01525 860829
<b>Baptist Churches</b> (Ampthill) Doreen Gibbs 01525 862424		(Maulden) Ian Crawford	01525 634325
		(Shefford) Hazel Arnold	01462 812564

## SCHOOLS

<b>Clophill St Mary's C of E Lower School &amp; Nursery</b> (Headteacher Mrs K Bingley)			01525 860206
<b>Harlington Upper School</b> , Harlington			01525 755100
<b>Preschool</b> clophillpreschool@gmail.com	(Chris) 07936 006381 or (Imogen)		07765 887868
<b>Redborne Upper School</b> , Ampthill			01525 404462
<b>Robert Bloomfield Middle School</b> , Shefford			01462 628800

# Village groups

Beverley Court	860920
Brownies	<a href="https://enquiryym.girlguiding.org.uk">https://enquiryym.girlguiding.org.uk</a>
Clophill Community Care	Duty Contact 07791 773705
Clophill Heritage Trust	Ali Bradbury 07894 710001
Clophill St Mary's C of E Lower School & Nursery	Emma Topliff 860206
Clophill Toddler Group	Hannah Compton 07535 705711
Clophill United Charities	Richard Pearson 861110
Conservation Group	Brian Adams 862297
Flower Club	Gillian Hill 860539
Friends of the Cheshire Home	Sue Pearson 861110
Funzone After School Club	07903 167493
Greensands Community Choir	Luke Howard 07975 520085
Indoor Carpet Bowls	Tony Meredith 860754
Messy Church	Victoria Higgins 07920 568861
	<a href="mailto:victoriajhiggins@hotmail.co.uk">victoriajhiggins@hotmail.co.uk</a>
St Mary's PTA	Julia Skelton 07774 993973
Scouts and Cubs	<a href="http://www.scouts.org.uk/get-involved">www.scouts.org.uk/get-involved</a>
Tea and Chat	Anita Errick 860695
Village Hall Booking Secretary	Marilyn Browning 07821 643936

## DAVID JAMES

[WWW.DAVIDJAMESKITCHENS.CO.UK](http://WWW.DAVIDJAMESKITCHENS.CO.UK)



**SAVE £££**  
**BUY DIRECT**

**Call 01525 722230**

## NEW

KITCHEN & LIGHTING  
SHOWROOM

5 MINUTES  
FROM CLOPHILL

DESIGN  
MANUFACTURE  
INSTALL

Pulloxhill  
Business Park  
Greenfield Rd  
Bedford  
MK45 5EU






*GCC*  
Greensand Community Choir  
**LOVE SINGING!**  
sing with an exciting local choir...



Come along to your local **community choir**,  
for men and women of all singing abilities!  
Mondays, 8.00-9.30 pm at St. Mary's Church, Clophill.

- Come and sing with an exciting new local choir led by a professional musical director
- Uplifting music in a variety of styles: musicals, classic pop, folksongs, sacred and world music
- Welcoming singers of all abilities - no audition, no need to read music!
- New members - come along any time for a free taster



Enquiries to:

[greensandcommunitychoir@gmail.com](mailto:greensandcommunitychoir@gmail.com)

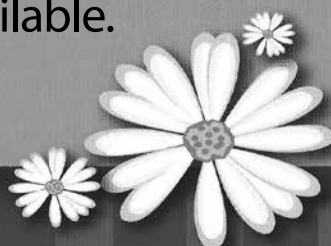
or ring Luke on: 07975 520085

## Daisy Cooper

Spring cleans, one off cleans and  
moving home cleans all available.

[Daisycooper22@hotmail.co.uk](mailto:Daisycooper22@hotmail.co.uk)

Please call 07913 332914



Keeping your home as fresh as a Daisy

## Hypnotherapy...*the Mindful Way*

For help with: anxiety, stress, IBS, migraine mindful eating,  
insomnia & many other conditions. For more information or  
an initial consultation please contact Ann. Tel: 07791171980

Email: [enquiries@pathwaysofmindfulness.co.uk](mailto:enquiries@pathwaysofmindfulness.co.uk)

[www.pathwaysofmindfulness.com](http://www.pathwaysofmindfulness.com)



## Painter and Decorator

Call Chris : 07950714579



*do you want your  
home brightening up?*

*all interior & exterior work*

*no job too small!*

*free no obligation quote*

*25 years experience  
& fully insured*

*facebook: @christopherthepainter  
email: chris.minihane@btinternet.com*

## JK Garden and Landscape Services Ltd



**We offer...**

*full landscaping service*

*patios*

*fencing*

*decking*

*new lawns*

*driveways*

*all garden maintenance*

Contact us on **0791 2028254**  
or at **jkgardening@hotmail.co.uk**

You can also find us on Facebook

## TALKEASY Coaching

***Do you want to make a fundamental  
difference to your life and don't  
know where to start?***

My name is Lynn and I am a Life Coach.

I have extensive experience helping  
with every aspect of life, e.g. support with  
family issues, or your own financial,  
emotional, or physical wellbeing.

My most recent project has been supporting  
young teenagers in their place of education.

Be the change in your life  
and contact me for a free,  
no obligation chat.



**07557948644**

**01525860384**

**lynncllements87@gmail.com**



## Tammys' Talons

**Nail Technician**

**Gel. Manicure and Pedicure**

**IZABELLEHAMMON**  
REGISTERED NAIL TECHNICIAN  
**CALGEL** **IZ** by **Chapman**

**Tammy Kirby**

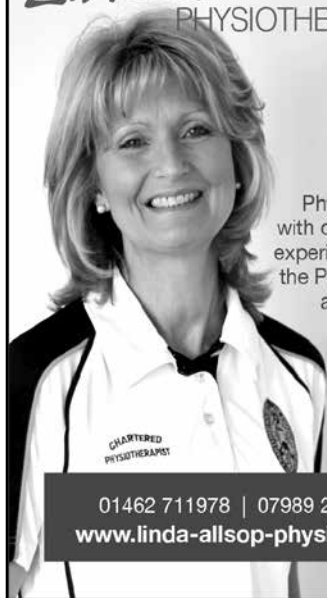
**Clophill, Bedfordshire, MK45 4AW**

**Tel : 07968379309**

**tammystalons@gmail.com**

# Linda Allsop

PHYSIOTHERAPY



Chartered  
Physiotherapist  
with over 30 years  
experience in both  
the Private Sector  
and the NHS.

01462 711978 | 07989 257026  
[www.linda-allsop-physio.co.uk](http://www.linda-allsop-physio.co.uk)

USING PARABEN & SULPHATE FREE, 100% VEGAN,  
CRUELTY FREE PRODUCTS



## A Cut Above Hairdressing

by Rachel

In the comfort of your own home  
cutting & styling specialist

call or text : 07896009382  
facebook: acutaboverachel

Salon experienced  
Fully insured  
Fully qualified to Level 3 Standard.

## PERSONAL DOG WALKER

£10 per hour  
£7 per half hour  
£6 per visit

- First Aid Certified
- Insured



Text or call Corrane on  
**07576 473373 or 01525 630740**  
 Corrane's personal dog walking



### Professional friendly accountancy services

Fully qualified,  
Free initial consultation,  
competitive fees  
Sole traders, Ltd companies,  
bookkeeping, payroll,  
CIS, VAT & Tax.

**sally@sjtax.co.uk**  
**01234 831997**  
**07899 808592**





**ROUTE 66 Barbers**

- Easy parking
- Minimum wait
- Complementary refreshments

**CHILDREN'S CUTS!**

**OPENING TIMES:**

<b>Monday</b>	closed
<b>Tuesday, Wednesday</b>	9.30-4pm
<b>Thursday Winter</b>	9.30-7pm
<b>Thursday Summer</b>	8pm
<b>Friday</b>	9.30-6pm
<b>Saturday</b>	8.30-4pm
<b>Sunday</b>	Closed

**07813 145112**

22 High Street, Silsoe, Bedfordshire MK45 4 EP




Telephone **01525 860526**

# *The Stone Jug*

**A Free House**  
BACK STREET, CLOPHILL

Despite many protestations from 'the Matriarch', Joyce is still very much at the helm (or so we tell her!). Vikki has been demoted (but she's still here, don't you know!) and Mark has moved into pole position and is doing exceptionally well. We're still very much a family-run village pub with our late dad's saying still ringing true – 'We're a proper pub for proper people'. Cheers!

- 5 real ales, including 2 guest pumps that change frequently (see our Facebook page for details)
- selection of wines and Prosecco by the glass – or even better, by the bottle
- home-cooked lunches Tues-Sat, 12pm-2pm



**REMEMBER OUR MOTTO**  
**"A VISIT TO THE JUG IS BETTER THAN GOING TO A PUB"**  
**CHEERS JOYCE, VIKKI & MARK**

[www.stonejug.co.uk](http://www.stonejug.co.uk) [www.facebook.com/thestonejugclophill](https://www.facebook.com/thestonejugclophill)



**DOULA root**

MOTHERING THE MOTHER THROUGH

## pregnancy, childbirth & beyond

I offer bespoke practical and emotional support to mothers and families perinatally. Find out how I can protect your birth space and support your journey on your terms.

CONTACT YOUR LOCAL DOULA ROSIE: 07543 280171 [WWW.ROSIECARTERSUSO.COM](http://WWW.ROSIECARTERSUSO.COM)

# OVENCLEAN.

The original oven cleaning specialists

All types cleaned:



- Ovens
- Grills
- Ranges
- Hobs
- AGAs
- Microwaves
- BBQs
- Extractors

Fully insured, and DBS Police Checked

For a quote call Clive direct on:  
**07949 233089 or phone the  
Office on 0800 840 7127**



[www.ovenclean.com](http://www.ovenclean.com)



Ovenclean Clive Burgess

## Warm Property Services



### Heating



### Plumbing



### Bathrooms



Maulden based. British Gas trained engineer with more than 10 years' experience. Discount for over 60's.

Free no obligation quote & advice.



Boiler and heating installations



Bathroom suites



Power flushing



Plumbing and drainage



Landlord Safety certificates



Fires and cookers

**07716 478794    01525 839342**  
**[www.warmprops.co.uk](http://www.warmprops.co.uk)**

THE BLUECAT



LUXURY CATTERY

**Tel: 01525 861416**  
**[www.thebluecat.net](http://www.thebluecat.net)**

Find us on Facebook @thebluecattery  
or email us at [enquiries@thebluecat.net](mailto:enquiries@thebluecat.net)

The Bluecat is a luxury cattery set in the quiet area of Jacques Lane in Clapham. With just 14 cat chalets, we have time to fuss, pamper and play with your cat to its heart's content whilst in our care. Please call for further information.

## Misty Double Glazing?

Over 30  
Years  
experience.  
FREE  
Quotes

Over 30  
Years  
experience.  
FREE  
Quotes

**KEEP YOUR WINDOW FRAMES...  
... WE JUST REPLACE THE GLASS!**

• UPVC • Aluminium • Or Wood

Because we replace just the glass the repair is a  
Fraction of the cost of a complete replacement window.

BEFORE



AFTER



**[mistydoublinglazing.co.uk](http://mistydoublinglazing.co.uk)**  
**QUALITY GLAZING SERVICES**

**01525 876808**

**WE ALSO REPLACE BROKEN...**

• Glass • Handles • Hinges & Locks  
**AND REPAIR...Patio Doors & Conservatories!**

# Nicola Rayner Fitness

*Feel great in 2019!*

## BOXWORX

Fun, effective pad work based boxing class for a great stress relieving total body workout!

**Wednesday 8-9pm**

**Clophill village hall**

Limited spaces available booking essential

## Pilates & Men's Core Strength

Improved core strength and posture through low impact stretching and spine safe conditioning exercises. Delivered with a positive, caring approach in a fun and friendly environment to leave you feeling energized!

**Classes in Flitton & Silsoe**

Limited spaces available booking essential

Classes also in the surrounding area

**Legs, Bums & tums**

**Zumba**

**Ladies Boot Camp**

For full timetable or to book contact Nicola  
[fitone@live.co.uk](mailto:fitone@live.co.uk) 07801 510988

## E.T. Accountancy Services

Experienced Chartered Accountant and Chartered Tax adviser based in Clophill providing a full range of accountancy and taxation services to businesses and private individuals.

To arrange a free initial consultation please telephone me on 01525 590465 or email [emma@et-accountancy.co.uk](mailto:emma@et-accountancy.co.uk)

*Chartered Accountant and  
Chartered Tax Adviser*

Emma Thoulass FCA CTA  
[www.et-accountancy.co.uk](http://www.et-accountancy.co.uk)  
01525 590465

## Take out an annual ad in Spotlight

### *Black & White per year*

One-sixth	<b>£53</b>	H31 x W126mm
One-quarter	<b>£69</b>	H92 x W61mm
One-third	<b>£80</b>	H61 x W126mm
Half page	<b>£112</b>	H92 x W126mm

Please email our Advertising Manager  
at [ads@clohillspotlight.co.uk](mailto:ads@clohillspotlight.co.uk)



# be hot!

with  
Slimming World

**TUESDAY**

**Silsoe**

Silsoe Community Sports Centre  
Chestnut Avenue, MK45 4GP  
5:30pm & 7:30pm

Tel / Text: Liz for details  
07973 532793

**slimmingworld.co.uk**  
0344 897 8000   



## Welcome to Clophill St Mary's C of E Lower School and Nursery

A small, friendly, Voluntary Aided Church of England Lower School, graded 'Outstanding' by Ofsted, with close links to the local community.

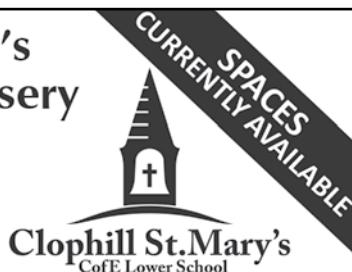
St. Mary's is a Values based school taking children aged from 2 years 7 months to 9 years and providing them with a framework for living, tightly woven into the positive Christian ethos of the school.

Breakfast and after school care for all ages.

## Acorn Nursery

for preschool children aged 2 years 7 months to 4 years with breakfast and after school care available.

Providing 30 hours free childcare entitlement.



**Clophill St. Mary's**  
CofE Lower School



To arrange a visit, please call us 01525 860206  
or email: [generaladmin@nursery@clophillstmarysschool.co.uk](mailto:generaladmin@nursery@clophillstmarysschool.co.uk)  
For more information visit: [www.clophillstmarysschool.co.uk](http://www.clophillstmarysschool.co.uk)

*Bringing the diverse world of cruising to your doorstep for the 10<sup>th</sup> year*

# CRUISE SHOW

**Sunday 6<sup>th</sup> October 2019****10.30 to 15.00 The Sharnbrook Hotel***Park Lane, Sharnbrook, Bedford, directly off A6**Discover* RIVER CRUISING | SMALL SHIPS | EXPEDITION VOYAGES | LUXURY CRUISES

Meet the Cruise Experts

*Plus* Exclusive Show Offers**New to Cruise Presentations  
during the day - limited places****REGISTER TODAY FOR FREE ENTRY**

01234 326758 sales@cruiseselect.co.uk

Pop in to our shop in Mill Street, Bedford

**01234 326758**

24 Mill Street, Bedford MK40 3HD

sales@cruiseselect.co.uk

www.selecttravelholidays.co.uk

www.cruiseselect.co.uk

**BOOK WITH CONFIDENCE**  
ABTA & ATOL protected

## ARCHITECTURAL DRAWINGS AND BUILDING DESIGN SERVICES

Professional Architectural design services provided for all types of private residential building projects including extensions, loft/garage conversions, garages and outbuildings through to new build dwellings with all necessary council approvals obtained.

For free estimates and advice contact Steve Coates on Flitwick 01525 862457 or 07960 215053.

stevecoates72@gmail.com

S & S Coates Surveying & Design, Unit 4 The Courtyard,  
r/o 13 High St, Clophill, MK45 4AB.

**CBuildE**  
chartered building engineer



# A L & G ABBOTT

F u n e r a l   D i r e c t o r s

~ Established 1832 ~

WITH YOU WHEN IT MATTERS MOST

An independent family business continuing to provide a caring & professional service to Bedford, Kempston & the surrounding villages.



- 24 Hour Personal Service
- Pre-Paid Funeral Plans
- Private Chapels of Rest
- Green Burials
- Home Arrangements
- Civil Services Available
- Bereavement Listening Service (Free to our families)



**T 01234 843222**

**[www.abbott-funerals.co.uk](http://www.abbott-funerals.co.uk)   [support@abbott-funerals.co.uk](mailto:support@abbott-funerals.co.uk)**

**150 BEDFORD ROAD, KEMPSTON, BEDFORDSHIRE, MK42 8BH**

# AIMS

Tim Kemp BA FCA  
Top Barn Rectory Road  
Steppingly MK45 5AT

TEL/FAX : 01525 717141  
MOBILE : 07900 823 012  
[www.aims.co.uk](http://www.aims.co.uk)  
e-mail: [timk@aims.co.uk](mailto:timk@aims.co.uk)

- ♦ **Professional** service providing for all your accounting and tax needs
- ♦ **Practical** advice based on 20 years experience in **running** businesses
- ♦ **Personal** approach with fixed fees relevant to the work **you** need
- ♦ **Friendly, local** accountant supporting the community for over 20 years

Please call for a free, no-obligation initial meeting

**ACCOUNTANTS FOR *business***

## Hills-Howson Financial Services

Financial adviser appointments available in your home or our office

The Old Post Office  
53 High Street  
Claphill  
Beds MK45 4BE

Tel: 01525 861803  
[www.hills-howson.co.uk](http://www.hills-howson.co.uk)  
[hills.howson@btconnect.com](mailto:hills.howson@btconnect.com)

Including:-

Investments

Pensions

Protection

Annuities



## W&H PEACOCK

AUCTIONEERS & VALUERS

### Weekly Auctions

Visit the Bedford Auction Centre to enjoy the excitement of a live auction.

Antique & Modern Furniture • Clocks • Books  
Ceramics & Glassware • Pictures & Prints  
Bicycles • Jewellery & Watches • Collectables  
Garage Tools & Equipment • Household Electrical Items  
Office Furniture & Equipment • Retail Products & Stock  
Vehicles • Horticultural & Commercial Equipment  
Building Materials • Garden Furniture & Effects

Eastcotts Park, Wallis Way, Bedford MK42 0PE 01234 266 366 [peacockauction.co.uk](http://peacockauction.co.uk)

## THE COMPUTER MAN



Got a problem with your computer and don't know what to do? Suffering with a virus or spam?

**Don't hesitate! Ring your local computer expert**

**Remote repairs or home visits  
(Day, evening & weekend)**

**Lap top/desk top loan  
(Free pick up & drop off in local area)**

Comprehensive health check from £35 (**Special Offer** £35 - normally £40)  
Refurbished fl at screen available from £15 • Refurbished base units available from £99



Contact Stephen Amos  
**07976 718567**  
[the.computerman@ntlworld.com](mailto:the.computerman@ntlworld.com)





## **rincontuition - Spanish & Maths**

**Expand your knowledge. Boost your confidence**

**Phone 01525 860743 - Mob 07952 667814**

**Exam techniques and preparation. Revision and practice papers: SATs, 11+ and GCSEs**

**Spanish** for business or pleasure, all levels. GCSE & A-levels

Skills development: conversation, reading and writing

**Maths:** Boost your confidence and abilities

KS1, KS2, KS3, SATs, 11+ and GCSE practice papers.

References available. Reasonable rates

**Enquiries: 01525 860743 - 07952 667814**

**rincontuition@yahoo.com**

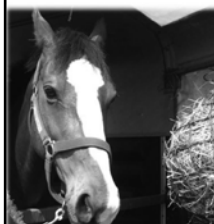


## **LIZZIE BROWN PET CARE & HORSE GROOM SERVICES**



**DOG WALKING  
PET POP-IN & FEEDING  
PET/HOUSE SITTING  
EQUINE GROOM\***

(\*BTEC Cert Equine Management)



**Lizzie Brown 01525 862459 / 07500 989 700**

*Reliable friendly local service*

**Short notice available (no contract commitments)**

**Insured Quality references available CRB checked\***

\*(Disclosure & Barring Service)

# Hairs & Graces

Unisex Salon



Wet Cut £19  
Cut & Blow Dry £30  
Colours start from £27  
Special OAP rates

## Opening Hours:

Monday	9.30-2.00
Tuesday	9.30-5.00
Wednesday	9.30-5.00
Thursday	9.30-8.00
Friday	9.30-8.00
Saturday	9.30-4.00

Zoe, Donna, Gemma  
and Amanda look forward  
to welcoming you.

Ring now to book an  
appointment.  
Appointments also  
available with our Barber.

Burgoine Business Centre, 117 Clophill Road, Maulden MK45 2AE

**01525 861491** • Loads of free parking



## GARDEN DOCTOR

**Rob McLeod**

Pruning Specialist

### Professional, Local, Experienced

- \* All tree and hedge work undertaken
- \* High standard of work
- \* Waste material recycled for compost
- \* Free Quotations
- \* Local, reliable service you can trust

**Tel: 07763 239340 or 01525 861568**

**email: [rob@gardendoctor.org.uk](mailto:rob@gardendoctor.org.uk)**

**[www.gardendoctor.org.uk](http://www.gardendoctor.org.uk)**

*Call the Garden Doctor and bring Good Health to your Garden*



Hedging & Pruning  
Shrubs & Fruit Trees  
Tree Surgery & Removal  
Fully certificated and insured



## We'll get you up and running!

We offer the very best physiotherapy care from a friendly approachable team of nine highly trained Chartered Physiotherapists all members of the Health Professionals Council

### Expert treatment including:

Neck/Back/Hand and Tennis Elbow Pain  
Headaches/Migraine/Sciatica  
Incontinence/Pelvic/SIJ/SPD/Pregnancy Back Pain  
Sprains/Strains/Torn Ligaments  
Whiplash/RSI/Osteoporosis/Sports Injuries

### Specialist Physiotherapists:

Neurological, Paediatric, Vertigo and Dizziness

### We also offer complementary treatments:

Acupuncture, Reflexology, Massage, Indian Head Massage,  
Chinese Herbalist, Lymphatic Drainage and Pumps



Tel: 01525 720882 [www.chartered-physiotherapy.co.uk](http://www.chartered-physiotherapy.co.uk) Email: [amphillphysio@btconnect.com](mailto:amphillphysio@btconnect.com)

7 Station Square, Flitwick, MK45 1DP



**The Happy Place.co.uk**

On the Green beside the Post Office every Friday, 3.30-7.30pm

We are your local mobile fish and chip van, we have been parked on the green every Friday for the past 6 years. We serve only the highest quality produce, cooked fresh to order and served to you by our friendly staff.

Why don't you pop down and come and Try Our Fry!

To avoid waiting in the cold, give us a call to

**place your order on: 07833 786108**

A big thank you to all our customers who have loyally supported us over the past couple of years.

## Chapman & Kirby Heating

**Gas, Plumbing & Heating Installations**

**Gas Safe Registered**

**Boiler Servicing & Maintenance**



**Call us now**

**Tel: 01525 861255 Mob: 07831 132308**

**Email: [info@chapmanandkirbyheating.co.uk](mailto:info@chapmanandkirbyheating.co.uk)**

**1C, Old Silsoe Road, Clophill, Beds., MK45 4AR**



We take care of the details, so you can say goodbye the way you want to.

NEVILLE. Because there is a difference.

## **AMPTHILL**

The Old Church, Flitwick Road MK45 2NT

t: 01525 406132

e: [ampthill@nevillefuneralservice.com](mailto:ampthill@nevillefuneralservice.com)

---

## **SHEFFORD**

24 Clifton Road SG17 5AE

t: 01462 813258

e: [shefford@nevillefuneralservice.com](mailto:shefford@nevillefuneralservice.com)

[www.nevillefuneralservice.com](http://www.nevillefuneralservice.com)










If you've been thinking about enjoying a great lawn this year – green, lush and weed-free, why not contact us today and let us bring your lawn to life.

We provide four seasonal treatments, as well as beneficial treatments to keep your lawn in tip-top condition - prices start from just £5\* per month.

PRICES FROM  
**£5\***  
PER MONTH

Ask us about our annual plans, which allows you to both spread the cost and save up to 25%.

**GreenThumb**  
LAWN TREATMENT SERVICE

Simply call: 01234 709345 or  
visit: [greenthumb.co.uk](http://greenthumb.co.uk)   

\*Based on a lawn size of 40m²

Baths, Toilets &  
Showers  
Sinks and Taps  
Guttering  
Leaks and Burst Pipes  
Drainage  
Handyman jobs also



Silsoe based  
No call out fee – free estimates  
Fully insured and guaranteed  
No job too small  
**07720 723653 01525 864859**  
[info@betaplumbing.co.uk](mailto:info@betaplumbing.co.uk)  
[www.betaplumbing.co.uk](http://www.betaplumbing.co.uk)

## **Washing Machines Dishwashers Dryers Electric Ovens Repairs Servicing Sales**



A local family business offering  
a quality service at a competitive price  
Est. 1981

**Tel: CLOPHILL 860148**  
**or Tim Downing direct on 07969 545 276**

A member of the White Goods Trade Association  
Fully Insured

the  
café

AT

**W&H PEACOCK**  
AUCTIONEERS & VALUERS

Visit

**www.peacockscfe.co.uk**  
for more details and to view  
our current menu.

Eastcotts Park, Wallis Way,  
Bedford, Bedfordshire  
MK42 0PE

**01234 266 366**



**View the salerooms for our upcoming auctions  
and then relax with a coffee and a slice of cake.**

Our unique café in Bedford Auction Centre with free wi-fi and  
views of the salerooms, comfortably seats over 100 customers.

We serve cooked breakfasts, paninis and sandwiches, light  
lunches and snacks plus a range of hot and cold drinks.

**Senior Citizen discounts available**

Open Monday to Thursday from 8.30am - 3.30pm  
Extended opening on Friday to 7pm. Saturday 8.30am - 4pm  
(Last orders 1 hour before closing)

## LOCAL ALLOY WHEEL REFURBISHMENT

  
**mintalloys**  
complete alloy wheel refurbishment

**Tel:**  
**01525**  
**860069**

**Alloy Wheel Repairs**

**Diamond Cut Alloy Wheels Repaired On Site**

**Powder Coat Primers & Lacquers**

**Fast Turnaround Alloy Wheel Welding**

**Tyres At Competitive Prices**

**NEW for 2015 - 4 Wheel Alignment Service**

**www.mintalloys.co.uk**

# Root 'n Branch

Your Local Friendly & Reliable Gardener

All aspects of Garden Maintenance undertaken  
• PRUNING • MOWING • WEEDING • PLANTING • HEDGING

Southfields, Shefford  
email: whooley@hotmail.co.uk

**Tel: 07771 537385**

Public Liability  
Insured

*Conifer*  
Kennels

Quality  
BOARDING  
DAY BOARDING  
HOLISTIC FOOD SHOP  
GROOMING & GOING HOME BATHS  
OFF SITE NATURE WALKS  
QUALIFIED TEAM



**nutriment**  
ENHANCED raw diet formula

[www.coniferkennels.co.uk](http://www.coniferkennels.co.uk)

**01525 860339**



The Causeway, Clophill, Beds. MK45 4BA

**Akela**

WILD WASH

**YAKERS**

SKIPPERS

*Eden*  
Holistic Pet Foods

**GREEN & WILDS**  
Naturally for pets

Pre-Order  
Service Available

## STUART DREW ELECTRICAL SERVICES

MEMBER OF THE ECA  
PART P CERTIFIED QUALIFIED TO 18TH EDITION

From extra lights & sockets, to re-wires. Fault finding and electrical safety certification. For a professional, courteous service with free estimates & all work guaranteed, please call me

29 Lincoln Way  
Harlington  
Beds  
LU5 6NG

**Fully qualified & insured**  
**30 years experience**

Telephone:  
01525 875965  
07941 812662



# Compu-Doc

PC / laptop crisis ?

01525-402227

Call the Doc for -

Hardware & software

Diagnosis & treatment

[john.stafford@compu-doc.co.uk](mailto:john.stafford@compu-doc.co.uk)

# BURGLAR ALARMS

*New Alarms Fitted or Upgrade Existing Alarms*

## BURGLAR ALARMS

We fit New Alarms - Wired or Wireless Systems

*\*We can service and maintain your existing alarm\**

## CCTV

We fit high quality systems to maximise your security.

Access your CCTV via the internet or mobile.

## DOOR ENTRY

We fit a range of quality video and audio intercoms to suit your needs.

*We are a family run business with over 35 years experience in home security and crime prevention.*



[www.maximumsecuritysystems.co.uk](http://www.maximumsecuritysystems.co.uk)

Contact:

**01582 864138 / 07746 111520**

*For a free quote and consultation*

# McCaffrey

Your local resource for residential build, refurbishment and maintenance



General building works  
Extensions  
New builds  
Internal refurbishment/alterations

Brickwork  
Carpentry  
Painting & decorating  
Purpose made joinery

Plumbing and heating  
Electrical installations  
UPVC windows & doors  
Garage conversions



call us to discuss your building requirements

**01525 861041**

[info@mccaffreybuild.co.uk](mailto:info@mccaffreybuild.co.uk) [www.mccaffreybuild.co.uk](http://www.mccaffreybuild.co.uk)

# ADAM IN YOUR GARDEN

**TREE SURGERY, HEDGE TRIMMING,  
TURFING, FENCE MAINTENANCE,  
DECKING, PATIO CLEANING**



Qualified, Fully Insured, Competitive Rates  
Free Estimates

**TEL: 01582 518954 MOB: 07828 490360**

**Web Site: [www.adaminyourgarden.co.uk](http://www.adaminyourgarden.co.uk)**



**Based near Toddington, Bedfordshire.**

**We rescue, rehabilitate & re-home stray & abandoned cats.**

**We have lots of beautiful cats waiting for loving homes.**

**Ring the shelter on 01525 875993**

**or Sue on 01582 650167 to arrange a visit.**

**Registered Charity No. 1098984**

**Visit our website @[www.straycatrescue.org.uk](http://www.straycatrescue.org.uk)**



EST.  
1989

- Suppliers of traditional and modern equipment
- Working whirlpool & spa baths, power & steam shower systems on display
- Over 40 settings on display
- Complete installation service if required
- Personal friendly service from a family run business
- Wall and floor tiles
- Accessories
- Mirrors
- Bathroom furniture
- Heated towel rails
- Saunas
- Bathroom cabinets

**SHEFFORD 01462 627002**

**[www.bathroomvogue.com](http://www.bathroomvogue.com)**

**Unit 4A, Shefford Industrial Park, St Francis Way, Shefford SG17 5DZ**

## Hire Clophill Village Hall



Wedding Receptions  
Birthdays & Special Occasions  
Dances and Discos  
Club & Community Meetings & Activities

Phone: 07821 643 936

Mail: [Clophill.villagehall@gmail.com](mailto:Clophill.villagehall@gmail.com) Web: [www.clophillvillagehall.co.uk](http://www.clophillvillagehall.co.uk)

## ROGER STOREY

**YOUR LOCAL PAINTER AND DECORATOR**

Friendly and Reliable Service

Many Years Experience

Please phone: **01525 861253** or **07800 777615**

## ANDREW BAKER WINDOWS

9 SHEFFORD ROAD  
CLOPHILL BEDS  
MK45 4BT

SPECIALISING IN UPVC WINDOWS,  
DOORS, CONSERVATORIES,  
FASCIA, SOFFITS, GUTTERS AND  
CLADDING. ALSO AVAILABLE FOR CARPENTRY  
WORK. NO JOB TOO SMALL OR LARGE.

20 Years experience.  
Free local quotes.

**FENSA**

Fensa Registered  
FIVE YEAR GUARANTEE

Contact Andrew: **01525862804 / 07825017855**

Email: [abakerwindows@gmail.com](mailto:abakerwindows@gmail.com)

# Advertisers index

## Architectural Services

S&S Coates Surveying & Design 26

## Auctioneers & Valuers

W&H Peacock 29

## Bathroom Services

Bathroom Vogue 38

## Builders & Carpenters

McCaffrey Build 37

Stuart Benson Building Projects IFC

## Car Services/Repairs

A&F Motors Ltd IFC

Mint Alloys 35

TC Coomber Car Services BC

## Chimney Sweep

Poppins Chimney Sweep IBC

## Cleaning Services

Daisy Cooper 19

Ovenclean 23

## Computer Services

Compu-Doc 36

The Computer Man 29

## Electrical Services

Stuart Drew Electrical Services 36

## Financial Services

AIMS Accountants 28

ET Accountancy Services 24

Hills-Howson Financial Services 28

MB Accounting Services 40

SJ Tax & Accounting Services 21

## Food and Refreshments

The Cafe at Peacocks 35

The Happy Plaice 32

## Funeral Services

AL&G Abbott, Funeral Directors 27

Neville Funeral Service 33

## Garden Services

Adam in your Garden 38

Garden Doctor 31

Green Thumb Lawn Treatment 34

JK Garden and Landscape Services 20

Root 'n Branch 36

## Health & Beauty

A Cut Above Hairdressing 21

Ampthill & Flitwick Physiotherapy 32

Doula Root 22

Hairs & Graces 31

Linda Allsop Physiotherapy 21

Nicola Rayner Fitness 24

Pathways of Mindfulness 19

Route 66 Barbers 22

Slimming World 25

Tammys' Talons 20

## Home Improvements

Christopher The Painter 20

Roger Storey - Painter & Decorator 39

David James Kitchens 18

## Music and Entertainment

Greensands Community Choir 19

## Nursery Schools

Clophill PreSchool BC

Clophill St Mary's C of E

Acorn Lower School and Nursery 25

## Pet & Animal Services

Conifer Kennels & Cattery 36

Lizzie Brown Pet Care 30

Personal Dog Walker 21

Stray Cat Rescue 38

The Bluecat Luxury Cattery 23

## Plumbing & Drainage Services

Beta Plumbing 34

Chapman & Kirby Heating 32

Warm Property Services 23

## Print Services

Fidelity Design & Print IFC

## Public Houses

The Stone Jug 22

## Repair Services

Tim Downing Repair Services 34

## Security Services

Maximum Security Systems 37

## Travel Services

Select Travel Holidays 26

## Tuition and Coaching Services

Rincon Tuition (Spanish & Maths) 30

TalkEasy Coaching 20

## Village Hall

Clophill Village Hall 39

## Windows/Replacement

Andrew Baker Windows 39

AW Windows IBC

Misty Double Glazing 19

IFC = Inside Front Cover IBC = Inside Back Cover BC = Back Cover

# MB

## ACCOUNTING SERVICES

accounting solutions for the  
**Self-Employed** and **Small Business**  
 including

**HMRC tax returns • Accounts • Bookkeeping**

For a totally confidential service at **very competitive rates** contact  
 Richard Fairholm T: 01525 861087 M: 07714189994 E: [mbaccounts@btinternet.com](mailto:mbaccounts@btinternet.com)





# Poppins Chimneys

**Chimneys Swept  
Wood and Multifuel Stove  
Installation & Liners**

*Great Service - Great Price!*



**01525 860424 or 07858 688785**  
**mark@poppinschimneys.co.uk**

**NO PRESSURE SALES – YOU DEAL WITH  
THE OWNER FROM START TO FINISH**



- ✓ A-rated windows as standard
- ✓ Composite doors
- ✓ High security
- ✓ Bifolding doors
- ✓ Conservatories
- ✓ Fascias, soffits and guttering
- ✓ Insurance-backed guarantee
- ✓ Fensa certificate



**Contact: ANDY WOOD**

**01582 536944 or 07796 272539**  
**sales@awwindows.co.uk**



See reviews from satisfied customers at [awwindows.co.uk](http://awwindows.co.uk)

# Clophill Preschool


**Your local Outstanding Preschool,  
based at Clophill Village Hall -  
welcoming children from  
2 years of age.**

We'll help your child to become an inventive  
and creative learner. With access to a fantastic  
outdoor area, our focus is on natural and  
exploratory 'play with a purpose'.



**Call us today to find  
out more:  
07765 887868 or  
07936 006381**

**[www.clophillpreschool.co.uk](http://www.clophillpreschool.co.uk)**

The background of the advertisement is a photograph of a classic blue car driving on a road, with a large tree on the right and a blue sky. In the top left corner, there is a logo for 'TLC Coomber' featuring a red car. In the top right corner, there is a blue square logo with a white geometric design.

**TLC Coomber**

**MOT'S CLASS 4/5L/7  
CAR SERVICING & REPAIR  
TYRES & EXHAUSTS  
AIR CONDITIONING  
DIAGNOSTIC CODE READING**

**Collection  
& Delivery**  
SERVICE AVAILABLE  
Please ask

**AMPTHILL**  
**01525 406330**

UNIT F, AMPTHILL INDUSTRIAL ESTATE, STATION ROAD, AMPTHILL, MK45 2QY