

Vol 41 | No.9

FREE

CLOPHILL SPOTLIGHT

NOVEMBER 2019

**LOVE YOUR
LOCAL NEWS**

AMPTHILL PRINT CENTRE

**DIGITAL PRINTING
DESIGN & MARKETING
DIRECT MAIL**

and much more...

...and we're right on your doorstep at

Unit 24 Station Road Ind Est, Ampthill, MK45 2QY
(Just off the A507 Ampthill bypass, past the Post Office)

WE PRINT...

- Stationery
- Newsletters
- Menus & Tent cards
- Brochures
- Flyers & Leaflets
- Catalogues
- Books & Booklets
- Direct mail
- Training Manuals
- Banners & Posters
- Greeting cards
- Calendars
- Labels & Stickers
- NCR pads
- Folders
- Exhibition panels
- CD/DVD duplication
- Photocopying

3 DAY STANDARD SERVICE | SAME DAY AVAILABLE

www.fidelityprint.co.uk

Get a quote 01525 300001 quotes@fidelityprint.co.uk

fidelity[®]

Unit 24 Station Rd Ind Est, Ampthill



MOTORS LTD

Tel: (01525) 860292

Tel: (01525) 404919

208 Clophill Road, Maulden, Bedfordshire MK45 2AF
89 Oliver Street, Ampthill, Bedfordshire MK45 2SA

**CAR AND COMMERCIAL VEHICLES
ALSO CLASSIC & AMERICAN CARS
SERVICING – REPAIRS – BREAKDOWN
SPRAYING – M.O.T.**



Stuart Benson Building Projects

**Design, Build and Maintenance including Interior Refurbishments,
Kitchen / Bathroom fitting, Tiling, Flooring, Skirting boards, Doors
Garage conversions. Exterior Decking, Patios, Driveways
Garden Offices/ Sheds**

Tel: 07946 579862 or 01525 403083

Email: benson.stuart@.googlemail.com



A word from the Editor...

Hello everyone...

A packed Spotlight this month, we have just about squeezed everything in!! We welcome the return of articles by Sue Pearson, this series is titled **"Clophill's Service Survivors of WW1"**, see page 10.



We also have a possible new Village group setting up (p13); plus an appeal for you to contribute to a Character Assessment of the Parish, an opportunity to document our lovely village to help preserve its distinct character (p21). Finally, the chance to have our own Greensand Gateway signage (p17).

Happy reading.



The magazine staff

EDITOR	Elaine Jones editorial@clophillspotlight.co.uk	07918 975823
ADVERTISING MANAGER	Emma Frost ads@clophillspotlight.co.uk	
DESIGN MANAGER	Chris Abrahams cmabrahams@yahoo.co.uk	
DISTRIBUTION MANAGER	Pete Liddle	860113
TREASURER	Richard Pearson	861110

Deadline for articles is 20th of the month

You can also read Spotlight online
www.clophillspotlight.co.uk

Parkside Singers – Ampthill

Mistletoe & Wine



Saturday 23rd November at 2:30pm

St Nicolas Church Hall, Barton Le-Clay MK45 4LA

Tickets £7:00

*Including Tea, Coffee, Mulled Wine
& Christmas Treats*

Get in the Christmas Spirit Early!

For Tickets Contact Dianne Matthews 01525 841077

or Ken Jones 01525 753110 or on the door



News from Clophill Heritage Trust

Our fourth annual Pumpkin Festival took place in October and was well attended, with many families enjoying traditional and new entertainment, stalls and activities. This year as well as Hemlock Morris Dancers we also had a spooky bug house run by Teaching Talons – they are available for schools and private parties and promote ecology, nature and education around all animals, insects and reptiles. Next year will be the fifth annual Pumpkin Festival and we will also celebrate ten years since Clophill Heritage Trust started work on old St Mary's Church. The festival will fall on Halloween for the first time, so we plan to make it our best event yet!

You may have seen in last month's Spotlight, our village survey to find out what projects you would like CHT to work on over the next couple of years. The survey is available to download from our website and you have until the end of November to complete it and return either to The Eco Lodges, pop through the door of our Warden at 25 Readshill, or email it to info@clophillecolodges.co.uk. Download the Survey here: www.ClophillEcoLodges.co.uk

Due to unforeseen circumstances, we regret we will not be holding our nativity this year. Instead, on 1st December we will be holding an afternoon event to help decorate our Christmas Tree. Come along and make a decoration to hang on our tree (or take home), enjoy a treat from our café and maybe a glass of mulled wine! The event will run from 12noon – 3pm, dogs on leads are welcome.

As always, if you would like to book any events, volunteer with us or get in touch please contact Louise or Emily on 07935 911207 or info@ClophillEcoLodges.co.uk



**For info call 07935 911207 or email info@clophillecolodges.co.uk
[www.Facebook.com/ClophillEcoLodges](https://www.facebook.com/ClophillEcoLodges)**

A big thank you...

...to those of you who responded to our request last month for Volunteers to help distribute Spotlight. ***Much appreciated*** – Pete Liddle (*Distribution manager*)



St Mary's Church. Clophill

21st Annual Quiz Night

Saturday 23rd November

7.15 for 7.30pm

at St Mary's Church

£5 – Please bring your own drinks, glasses and nibbles. Tea and coffee available.

Teams should consist of up to 6 adults. Children are welcome.

For more information please contact:-
Julie Benson, 72 High Street, Clophill - 01525 860497
by 16th Nov. at the latest



CLOPHILL METHODIST CHURCH

Saturday 30th November

12 noon to 4.00 p.m.

CHRISTMAS MARKET

Free Entry

Various stalls

Wood turner/cakes/books/craft

Tombola/Christmas gifts/raffle



Lunches

Tea, Coffee & Mince Pies

All proceeds to Clophill Methodist Church

Contacts: 01525 860695/01525 862885

Clophill Preschool News

Hi everyone - The children have been working in the allotment this term as they prepare it for winter. It has been weeded, mulched and fertilized. The last of our tomatoes were picked and we used them to make tomato bread. We still have some courgettes and pumpkins growing. This



month we have also celebrated **Diwali**, a parent came in to share the story with us. It is wonderful when families come in and share their cultures and traditions, a great way for us all to learn and show appreciation and respect for each other.

We spent our last week of half term doing a **Countryfile ramble every day in support of Children in Need**. We went around and about the wider area of preschool, across the village hall grounds, exploring on our adventures. We found **huge muddy puddles** to jump through and **tracks on the ground** to investigate. We found holes and wondered what animals may live in them and did **scavenger hunts**, finding everything from pinecones to dead

pheasants! We also played the ant game, where everyone took it in turns to be the leader and share what they had found on the walk: **a great way to empower every child**.

There has been a lot of **den building** at preschool, some with tarps and poles, others have been built by the children with sticks and twigs as they constructed houses to **retell the three pigs**. We also saw **big stones being used to make caves for dinosaurs** as well as **leaves and moss to create fairy houses**. The children find both storytelling and construction much more involving and engaging when they do it using real objects outside, the three pigs story took on a life of its own!

As many of you may know, **our preschool is renowned for its excellent support of children with additional needs**. Our inclusive practice allows all children to explore and embed their learning through nature. We have just welcomed Sue to work with us assisting as a 1:1 support and she has already proved herself to be a great asset to our fantastic team, alongside Su and Tanya, our other wonderful support workers.

After much deliberation, **Chris has just started her Forest School training**. We already spend a lot of time outside giving our children the opportunity to explore our woodland environment, **developing important life skills such as persistence, resilience, curiosity, creativity, and resourcefulness**, the Forest School endorsement will no doubt, complement this.



We would like to thank everyone who has chosen to support us on **Easy Fundraising**. We have seen it in an increase in our donations this month, don't forget to use the app when you do your Christmas shopping. We have also had another huge collection for **Happy School bags**, thanks to everyone who took the time to bring us their bags of old clothes and bedding. Next collection is in the Spring.

- Contact Imogen on **07765 887868** or Chris on **07936 006381** or email clophillpreschool@gmail.com. Our website is www.clophillpreschool.co.uk

CLOPHILL VILLAGE HALL EVENTS

The Original and first ABBA Duo performing all of ABBA's greatest hits in one spectacular night of music!



Saturday 16th November
7:30pm - 'Til Late

£10 Adv • £12 OTD
Fully Licensed Bar • Large Dance Floor

Tickets & Info
Call Steve on 07831255807
or email steve.langhorn@gmail.com
Clophill Village Hall, Beds MK45 4DA
Ample free parking available onsite

Connecting our Communities in



A COMMUNITY TRANSPORT OFFERING FOR THE AREA. ALL VEHICLES ACCESSIBLE FOR THOSE WITH REDUCED MOBILITY

- Travel around the area to shops, health services, visit friends and relatives, or just enjoy a day out
- Access Bedford for a greater range of destinations
- All our high quality vehicles are accessible for those with impaired mobility
- All staff are friendly, caring, fully trained, DBS checked & MiDAS assessed

Where do we serve?

Amphill, Biggleswade, Cranfield, Flitwick, Harlington, Marston, Potton, Sandy, Silsoe, Stotfold, into Bedford & all points in between.

For more information: call **01234 834933**

or email communitytransport@bedsrcc.org.uk

Come into the Garden

with Kate Gardner



If you have been into the garden centres recently you can't help but notice that they are getting ready for the upcoming seasonal celebrations. But if

you look past the Christmas decorations you will see that there are lots of plants that are all ready for planting now, in the autumn.

For many that may seem counter intuitive as the garden appears to be shutting down for the winter. Leaves are falling from the trees; summer flowers are fading and it feels cooler and wetter. But here's the important thing, the soil is still warm from the summer and it provides an inviting medium for roots to explore rather than the dank, chilly soil of early spring.

As the leaves fall the stress on trees and shrubs to pump lots of water up from the soil through their roots to support the lush green growth is reducing. Lack of water is the biggest single reason for death in newly-planted trees. At least a third never make it through their first summer.

As the network of leaves and shoots shuts down for the winter, trees and shrubs divert their energy to the underground root system and rapid root growth (the most rapid of the year) takes place between now and the end of the year. This means that the plant is well-established and gets off to an explosive start in the spring.

Preparing the soil is easier too as digging our sandy soil in autumn and after some rainfall is much less arduous than trying to do so when it's hard and dry. Ground preparation is the key to successful planting. Fork in plenty of good garden compost or a shrub and tree planting compost. Alternatively use the compost from your pots and containers when you tip out that summer bedding.

Whatever you are planting, always water it thoroughly before you take it out of its pot. Dig a hole that's deep enough and wide enough to accommodate the root ball with plenty of space all around it and make sure you break up the soil in the bottom of the planting hole with a fork. It's a good idea to add a slow release general fertiliser and some mycorrhizal fungi to the soil as you backfill around the root ball.

Mycorrhizal fungi exist in nearly all soils. These extraordinary fungi provide a secondary root system for the plant. They are highly efficient at absorbing water and nutrients (particularly phosphorus) from the soil and they live in mutual benefit with the plant – the plant provides carbon and sugars for the fungi, and the fungi improves the uptake of nutrients. Firm the soil around the roots and water your new plant thoroughly. Don't forget to mulch around the base of the plant, but take care not to let the mulch touch the stem.

So, what could you choose. Some of my favourite plants to give shape and colour to the garden all through the season include **Berberis thunbergii** with its arching stems of wine red leaves suffused with salmon pink at the tips of the shoots. A great mixer with other shrubs and perennials in summer, then ablaze in autumn as the leaves turn to scarlet. Grows on any soil in an open sunny position.

Dogwoods are shrubs you grow for their winter stems, or for their colourful variegated leaves. **Cornus alba 'Sibirica Variegata'** has both, and it doesn't get too big either. Its best feature is the amazing crimson-pink autumn colour that spreads through those pretty green and white variegated leaves. Truly a shrub for all seasons. **Happy Gardening**

Cornus alba 'Sibirica Variegata'



Westoning Players

Present



Improbable Fiction

by Alan Ayckbourn



28th 29th & 30th November 2019
Westoning Village Hall
MK45 5JL

7.30pm
Tickets: £10.00

BOX OFFICE: T: 01525 719695 E: WESTONINGPLAYERS@GMAIL.COM

Clophill & District Flower Club

On Thursday, 3rd October, members and visitors enjoyed a workshop/dabble evening. These crafty evenings have become a very popular, sociable and enjoyable fixture on our calendar and over 50 members attended.

Our chairman, Carolyn Cranswick, introduced the evening and explained that it was an opportunity to learn new skills and to test one's knowledge! Five different practical activities had been organised by the committee, supported by 2 members. The evening consisted of making fresh flower corsages, felt flowers, Christmas cards and tree decorations, manipulating corrugated card to make containers for arranging flowers and a quiz to identify 35 different plant materials.



After demonstrations by the activity leaders, each group settled down in earnest to an evening of chat and creativity. All the resources were provided by the club and many managed to complete two, if not three, of the activities. The results were very impressive and many were surprised to find that they had hidden talents. The plant identification also proved to be very popular. *Ann Dowding, Committee member*



DATES FOR YOUR DIARY

5th December

Christmas Demonstration – open meeting. Why not join us for a relaxing and entertaining evening when National Demonstrator, Nigel Whyles, starts off our Christmas preparations with his interpretation of 'Deck the Halls'.

Tickets: £6 members, £10 visitors, including mulled wine and mince pies, are available from Gillian Hill (01525 860539).

Venue: Clophill Village Hall

Time: Doors open at 6.45pm for a 7.30pm start

9th January

Our **Annual General Meeting** will be held in Clophill Village Hall Committee Room at 7.30pm. All are welcome.

Clophill's Serving Survivors of WW1

by Sue Pearson

During WW1 it was reported in "Amphill News" that at least 100 men from Clophill joined the armed forces for the First World War. We thought that it might be of interest to look at what happened to those men during the war and also see if there was any other information about them. However, with the aid of the Missing Voters Register and Colin Watt's website - www.clophillhistory.mooncarrot.org, we have been able to establish that over 130 men with a Clophill connection served in the First World War and survived. As a man had to be at least 21 years of age to be on the Voters Register, there may have been some younger soldiers who would not have been eligible to appear on it. In addition, there may have been women who served but they would not appear on the Voters Register as women were not then eligible to vote.

We thought that, having commemorated the fallen over the last few years, we should now remember those who served and survived.....

Private Lewis (or Louis) John Ansell - East Surrey Regiment. Louis was born in Clophill in 1891 and in 1911 he lived with his parents and 4 siblings on the High Street. His father, William was a bricklayer and Louis was a bricklayer's labourer. He joined the Bedfordshire Regiment and served in Egypt. His term of service expired but he then joined the East Surreys. In April 1918 Amphill News reported that he had been wounded in France. He married Doris Sutton in Luton in 1926 and passed away in Biggleswade in March 1958.

George Appleby (identity uncertain but possibly William George born in Clophill 1863). Amphill News reported that George served with the ASC Mechanical transport and by 1916 was promoted to Corporal and was home on leave. He had been discharged due to rheumatic fever but re-enlisted as soon as he recovered. In 1917 the paper reported as follows:- "Corpl. G W (sic) Appleby, who is on active service in France, has been transferred



Wreath making at

**Clophill Preschool Thursday 28th November from
9:15am @ Clophill Village Hall**

Everything provided, please bring anything you would like to add to
personalise your wreath – please no glitter

*Limited number of places available, to book a place please contact
Imogen at clophillpreschool@gmail.com*

£25 per person with a donation going to

Clophill Preschool



Event run in
conjunction with
Charlotte from

from the Heavy Artillery Motor Transport to the 1st Field Survey Company, R.E. He tells a rather "tall" story of the laundry work in his part of the line. A chum of his, who noticed that his shirts generally came back minus the buttons, tried to give a gentle hint that he would like to have some buttons sewn on, by piercing holes in the lid of a small tin and sewing it on to the collar of his shirt. His chagrin can only be imagined when, on the return of the shirt from the wash, he found that the laundry had worked a buttonhole to fit the 'button'."

F Ashley – in March 1915 Ampthill News reported that F. Ashley, had been wounded, but was now progressing as favourably as can be expected. It is probable that this is Frank Ashley, born in Clophill in 1878. Frank married Ethel Fennemore in 1907 and by 1911 was working as a House Decorator, living at 63, High Street. Frank & Ethel continued to live there until his death in 1956.

It may also be of interest that **Henry, son of Arthur William Appleby** originally of Clophill also received recognition in Ampthill News, even though he was not born in the village. (He was born and lived in Hitchin.) The Newspaper said "A deed of heroism, which ought to be known, has recently come to light. The doer of it has since passed to his rest. He never spoke about it himself, and it was some months after his death that his father, Mr. A W. Appleby, of "Jacques Bungalow," heard of it from the Commanding Officer. Pte. Henry Appleby, was driving a motor lorry in the early days of the campaign. There were ten lorries carrying ammunition to the guns and to reach their destination they had to leave the high road and go down a narrow lane with a deep ditch on both sides of the roadway. When the lorries had gone down this lane about a mile, they came under shellfire. The first shell hit the leading lorry, which blew up, whereupon the officer in charge gave orders that the lorries were to be left and the drivers to get back on the main road. On reaching the road the officers called for volunteers to get the lorries and their valuable cargo out of peril. Appleby at once volunteered his services, and actually drove nine lorries, one at a time, backwards for over a mile under heavy shellfire and saved them all." Sadly Henry died on Christmas Day in 1916 at Larkhill Camp, Salisbury.



Bedfordshire
Cambridgeshire
Northamptonshire

Wildlife walks & talks



Damselflies and Dragonflies *with John Curd*

Monday 9th December, 7.15pm/7.45 pm, Maulden Church Hall

John Curd, a local dragonfly expert and enthusiast will talk about these most exquisite summer creatures. With ancestors stretching back 300 million years, iridescent wings and seemingly jewelled bodies that grace our ponds, rivers and woods, damselflies and dragonflies are as fascinating as they are beautiful. Preceded by our brief AGM.

The AGM will start at 7.15 pm and the talk at 7.45 pm. **£3 per adult**

Open to all. Walks have group size limits so please book.

For bookings or additional information please email flitvale.info@gmail.com
or ring Ann on 075801 78889 between 6pm and 8pm or at weekends.



St Mary's Church News

We were pleased to welcome members of St. Mary's School to our Harvest Festival Service. The children read part of Psalm 65 and some of their own prayers. The mountain of gifts of tins and packets of food were taken to one of the local foodbanks. A few days later many of us enjoyed a Harvest Lunch, prepared by our fundraising team.

We should like to thank the many people who gave so generously to our Gift Day. At the time of writing we have received almost **£6,000 and rising**, net of Gift Aid. This is a wonderful contribution to the fund for repairs to the church and boundary wall.

If you would like to find out about the process for appointing a new rector for the parish, you are invited to meet with the Bishop and Archdeacon on **Monday December 2nd at 7.00 pm** at All Saints Church, Campton.

The annual **Service of Remembrance** will be held at St Mary's on Sunday November 10th **starting at 10.15 am**, with the Act of Remembrance at the War Memorial at approx. **10.50am**.

Clophill United Charities

Christmas donation to Widow(er)s and Pensioners December 2019

This year the distribution will take place in early December:

Saturday 30th November 10am-12noon in the Oakley Room, St Mary's Church

Sunday 1st December 10.00am at Beverley Court

Please note that the Sunday distribution will be for Beverley Court Residents ONLY. Anyone else should visit the Church.

No person or group is entitled to receive this benefit as of right.

Please be aware that forthcoming Christmas donations should only be claimed by those widow(er)s and pensioners who are really in need of extra help at an expensive time of year and not by those who don't need it.

This will enable us to provide help to others throughout the year.

Posters will be displayed in the village during November as a reminder of these times.

Please remember too that all through the year, Clophill United Charities are pleased to be able to help Clophill villagers of all ages in times of hardship. If you, or anyone you know who lives in the village, is experiencing financial hardship please contact me (on **01525 861110**) in total confidence.

On behalf of the Trustees: Richard Pearson, Chairman

New Clophill Village Group

1. Ampthill Community Safety Group were formed in 2009. They are an independent group made up of residents of Ampthill Ward covering the Town of Ampthill and the Parishes of Maulden & Clophill. They have a written constitution and a web page (see <http://ampthillcommunitysafetygroup.org.uk>)
2. They have traditionally supplied reports on a regular basis to Ampthill Town Council and have proactively responded to CBC and Bedford Police/PCC public consultations taking on initiatives such as supporting residents in relation to poor parking and unsafe speeds and monitoring crime. The Group has been most active in Ampthill. There is a well-established Safer Maulden Group.
3. The current published aims of ACSG are;
 - To promote community safety within Ampthill (Ward), in order to improve the quality of life for residents
 - Devise and develop initiatives working in partnership with local authorities, agencies, and organisations
 - Set appropriate priorities and targets
 - Pursue funding schemes in order to finance projects
 - Provide feedback to Central Bedfordshire Council and Bedfordshire Police
 - Act as a consultative body for Central Bedfordshire Council and Bedfordshire Police
 - Recommend priorities for the Ampthill Local Policing Team.

This month the ACSG is looking to re-brand and re-launch itself and has had meetings with Central Bedfordshire Councillors, Bedfordshire Police, Fire, and is briefing the Town and Parish Councils. **In Clophill the hope is that a new Neighbourhood Watch and possibly a Street Watch team** might be established to deal with community concerns and work with the Council and Police. The new **Clophill Village Group** will be both proactive in identifying issues but use problem solving skills to deal with them, supported by partner organisations and the Parish Council.

This will mean that **a number of volunteers will be needed** to give up a few hours a week/fortnight, but more details will follow next month.

Paul Downing – Chair Ampthill Community Safety Group (07973 499 668)

ROOTED CHRISTMAS TREES FOR SALE AND HIRE

**Non needle drop, rooted and sustainable
(They can be replanted back into the ground after Christmas)**

A selection of different varieties and sizes for sale as bare root
or potted specimens to order

Species include:

Norway Spruce @ £3.50/ft (for all bare rooted trees)
Caucasian Fir and Korean Fir @ £6/ft (for all bare rooted trees)

All potted trees are priced individually according to size and species

Contact **Colin Carpenter** on **01525 860391** or **07751 356094** for prices and advice





St Mary's School News

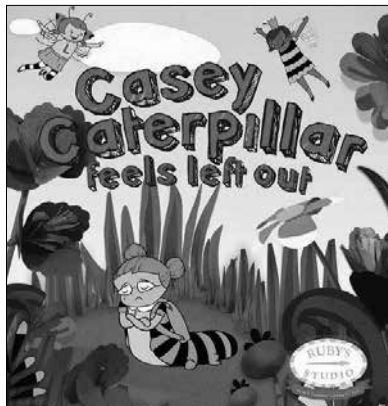
In October, the school joined with St Mary's Church on the 6th for the Harvest service and held our own school service on the 7th. The children who read did really well and we were very proud of them.

The school and church made their donation to NOAH and the Foodbank this year.

Our children received a fantastic opportunity to be taught once again by a qualified gym coach and some of our Year 4s represented the school wonderfully at a Tag Rugby tournament. Some of our Year 2 children attended a multi skills event at Samuel Whitbread and had a wonderful time.

All the children (Acorn through to Oak Class) took part in a Science Day. The children participated in four experiments looking at different areas within the Science curriculum. The children worked in their colour teams throughout the day and had a wonderful educational experience.

Mind Map, a charity which supports positive mental health visited and introduced children, from reception upwards, to Casey the Caterpillar. 'Casey' discussed feelings with the children, and also told them a story to explore their feelings in greater depth. This good work is being continued by the class teachers throughout the academic year. They also taught Year 3 and 4 about the importance of Resilience.



The school also welcomed the Bible Worship Exhibition and Workshop into school. The children had the opportunity to look at various Bible stories on display and the group then enacted these stories and the children were able to ask questions at the end.

Finally, Friends of St Mary's (the school's PTA) were extremely busy organising an amazing Fireworks Night. A big thank you for all that they did and continue to do to help support the school.

School Play Performance for our Over 65's in the Village, Tuesday December 3rd @ 2pm.

You will receive an invitation shortly but please feel welcome to call or email us if you would like to attend. This is also the performance that our parents who have children in the play (but would like to bring their pre-school child) will be invited to. Mrs Topliff our Office Manager can be contacted on generaladmin@clophillstmarysschool.co.uk or 01525 860206.

Our value for November is *Peace and Reflection*

We felt it was important to consider peace when learning about Remembrance Day. **External Peace** is a state of harmony where there is a lack of conflict. This can be in relationships with others and also in the world around. Peace evokes the presence of cultural understanding and unity. We also look at inner **peace**, which is found within: contentment with who we are and what we have.

**Important information for parents with children moving to
Middle School or requiring a Reception class place September 2020**

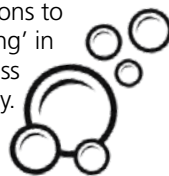
Applications online: www.centralbedfordshire.gov.uk/admissions
Online applications preferred but hard copy applications are available from the school office.

**Deadline for both Middle School Place/Starting School Place
is 15th January 2020**

We urge parents to make their applications ASAP and let the school office know if you have any questions or problems relating to your application.

Acorn Nursery News

We've been having fun learning the sounds in our names through various activities including Jolly Phonics songs, spelling with moveable letters, tracing around wooden letter stencils; watching 'Alpha blocks' on the Smartboard and using chalk, paint and water to practice writing. The children have been eager to practice the actions to our first 'Write Dance' song of the new term which will lead onto 'scrimbling' in the following weeks. They displayed just how well they are learning our class values when we attended the Harvest service in Church, listening attentively. We also joined the whole school for Science Day, having great fun with our siblings and friends making slime, and experimenting with Bubbles.

A festive poster for a Christmas Fair. The background is dark with white stars and snowflakes. At the top left is a logo for 'NEWBURY FARM PLANTS' featuring a stylized plant. To the right, it says 'SUNDAY 1ST DECEMBER' and '10am - 4pm'. The main title 'Christmas FAIR' is in a large, elegant script font, with 'FAIR' in bold block letters. Below this, it lists 'STALLS WITH LOCALLY MADE ARTS & CRAFTS, MUSIC, CHRISTMAS GIFTS, CHRISTMAS TREES AND MORE!'. The phone number '01525 860048' is prominently displayed. At the bottom, it gives the address 'NEWBURY FARM PLANTS - AMPHILL RD, SILSOE, BEDFORD MK45 4HB'. The bottom edge features a row of white silhouettes of houses and trees.

NEWBURY FARM PLANTS SUNDAY 1ST DECEMBER
10am - 4pm

Christmas
FAIR

STALLS WITH LOCALLY MADE ARTS & CRAFTS, MUSIC,
CHRISTMAS GIFTS, CHRISTMAS TREES AND MORE!

01525 860048

NEWBURY FARM PLANTS - AMPHILL RD, SILSOE, BEDFORD MK45 4HB



St Mary the Virgin Church, Clophill

You are invited to our

Christmas Lunch

Wednesday 11th December

12 noon – 2pm

A 3 course festive meal

with drinks £8.50

Everyone very welcome

To reserve a place phone

Carolyn 01462 815433 or Gillian 01525 860539

Gateway Signs

Greensand Country Landscape Partnership

Greensand Country, the distinct, beautiful and loved countryside defined by the Greensand Ridge and stretching from Leighton Buzzard to Gamlingay, has made its mark across the landscape, with new gateway signage at the entrances to towns and villages.



The new signs, which sit beneath existing 'welcome to...' posts, represent one of over 50 projects that are being delivered across the area to promote its special qualities and help residents and visitors to become better connected with the local landscape, wildlife, heritage and culture. 15 town and parish councils across Greensand Country have already demonstrated they are proud to be in this area and have signed up for the gateways, which will be erected by Central Bedfordshire Council in over 50 locations across the length and breadth of Greensand Country.

As well as the town and village signs, people will soon see new waymark posts on walking, cycling and horse-riding routes within the countryside and a new Greensand Country website is set to launch next Spring. The new website will enable people to find and download routes, information about events and activities and will signpost to local food & drink, independent shops and information on what makes Greensand Country unique and special.

The signage installed as part of this project has been funded by the European Agricultural Fund for Rural Development.

If your village does not currently have Greensand Country signage and you would like to discuss how this can be added, please ask your town or parish council to email the Greensand Country Landscape Partnership at team@greensandcountry.com.

For further information about Greensand Country visit www.greensandcountry.com and for regular updates follow @greensandsocial on Facebook, Twitter and Instagram.

**Leonard
Cheshire
Disability**

Many, many thanks...

...to everyone who helped or supported us at our Jumble Sale on the 4th October at the Village Hall. Thank you also to those kind supporters who gave us jumble to sell! We are delighted to have raised a Grand Total of **£665.58**; this amount includes a very generous donation of £50, and £68 from Ebay sales. The total will shortly rise as even more items have been set aside to sell on Ebay and we will soon have another collection of books to sell.

We look forward to seeing you on Friday 24th April 2020, when we plan to hold our next Jumble Sale. If you have some good quality, clean jumble to spare, we will be happy to store it for you. We are also happy to take books.

If you could help at our next Sale or would be interested in finding out more about our group's activities, including our fortnightly shopping trips for Residents— just call 861110.

Clophill Friends of the Leonard Cheshire Disability Home at Ampthill

WARDEN ABBEY

The community vineyard



Annual Christmas Wine Sale Taste, and Buy

**The Mansion at
Shuttleworth
(Garden Suite)
Old Warden
SG18 9EA**

**Sunday
8th December
11.00 to 4.00**



White and sparkling wines,
Christmas gift boxes,
and gift vouchers from
your local Bedfordshire
Community vineyard.
Local food and crafts.
Free mince pies while stocks last!

info@wardenvineyard.org.uk

www.wardenvineyard.org.uk

t: 07981 113714



Local. Ethical. Award winning.

These notes are a resume only. Official minutes are available on the internet and notice boards. All official correspondence should be sent to the parish clerk and not individual councillors.

Gianpaolo Mantini (Chairman) opened proceedings to fellow Councillors and an audience of ten interested supporters, whom it was lovely to see. There was an audible gasp of surprise, and sorrow, when he announced that Councillor Wendy Austin has decided to stand down.

Ampthill Community Safety Group. Paul Downing (Chairman) explained that it was set up to promote safety (of all kinds) in Ampthill and help to reduce crime and anti-social behaviour; being one of several local independent groups that work alongside CBC, Parish Councils and other interested parties. He asked if the Parish Council would be interested in using its services. The response was positive, although recognised Clophill couldn't put forward anyone to serve on the Committee.

Anti-social behaviour. Drug dealing and drug abuse is taking place in the shelter put on the playing field a few months ago, at the request of local youngsters. It seems older people are using it and our young folk are being denied. Local horses have been doped in some way, one of which died as a result, the other having to undergo expensive treatment. It was suggested that there be an engagement between those perpetrating the offences and the PC, with a possible outcome that if the behaviour did not improve, the shelter would be removed.

Other points raised:

- Complaints about leaves on footpaths are being addressed.
- The idea to put Remembrance Poppies on lampposts came too late for this year, but will be discussed in time for 2020.
- The problem with tree branches overhanging footpaths was being addressed, as was parking reinforcement on The Green.
- Each Ward Councillor has been given a sum of £2,000 which is to be allocated to local good causes, the applicants having to match the fund. It was suggested that this is advertised in Spotlight.
- Free travel for all school children who travel on the school buses will be discussed by CBC, with the hope it will be free to those attending both Samuel Whitbread and Harlington.
- The local health hubs are beginning to come into use, and the hospital merger between Bedford and Luton is moving ahead.

Matters for consideration:

- 1. Broadband issues** Barry Deadman from Wildanet gave a presentation about superfast Broadband connection in our area. This would be via a wireless version through a small local hub, which might be sited in Wilstead. There could be a 'pop-up' network in the interim. There is a grant available from the Government's 'Rural Gigabit Connectivity Programme' to which suppliers can apply. It was suggested that the Village Hall could be a hub - and it was noted that a minimum of 20 households would do to bring in the service. It was suggested that an ad be placed in Spotlight to determine requirements.

Clophill Parish Council

Continued

- 2. Lakes Development** There currently seems to be an impasse, although it is hoped that the land 106 agreement should be signed by the end of the year. Hopefully with 2 addenda, those concerning continuity of development and the commercial aspect.
- 3. Quotes** for work up at Hollybush were received; quotes for repairs to the Pound and bus shelter were approved.
- 4. Luton Airport expansion**, it is possible that flight paths might now go over the village.
- 5. Highways** It was noted that posts had been installed round the Green, but parking was still poor. It was suggested that chains between the posts might help with improving this; there are plans to seek rural match funding to create a hatched area where there is no parking allowed. CB have a consultation in place for double yellow lines round the corner of the High Street and into Great Lane.
- 6. Readshill Quarry** The PC has been asked if it would meet with the owners to discuss planning ideas.
- 7. Bus Shelter** It was decided to pay a monthly fee to have the shelter cleaned.
- 8. Arboreal assessment** of the trees owned and managed by the PC. Contractors are being approached for quotes for remedial work to address concerns over them.
- 9. Finally**, it was stated that the 5 year survey of housing need was due in 2020.

Planning

CB/19/03287/FULL

Location: Land to the North of Shefford Road

Proposal: Removal of existing stables, and erection of a single detached dwelling (use class C3) and associated private amenity space and landscaping. **OBJECT**

If planning consent is considered, the Parish Council would require the applicant to provide suitable pedestrian access to the site. This would involve the laying of paved footways prior to occupation. This is for a footpath along the entire frontage of the site to connect to the existing footpath to the west along Shefford Road.

CB/19/01862/FULL

Location: Land including and to the rear of 68 and 66a High Street

Proposal: Proposed demolition of 66a High Street followed by the erection of 5 no. dwellings including the creation of a new priority junction and access road, as well as associated landscaping and ancillary works. **STRONGLY OBJECT**

Clophill Parish Council require this to be called into the Development Management Committee as is against policy and falls short of the high standards required for such developments.

CB/19/03369/FULL

Location: 31 High Street

Proposal: Demolition of existing conservatory and replacement pitched roof extension. **SUPPORT**

CB/19/02980/FULL

Location: 3 Kiln Lane

Proposal: Two storey rear extension, first floor front extension, dormers and alterations. **OBJECT**

Clophill Parish Council

Continued

CB/19/02458/LB and CB/19/02457/FULL

Location: 2 The Granary, Brickwall Farm, Kiln Lane

Proposal: Garage conversion into kitchen/Dining/Living Area, Toilet and staircase to existing first floor bedroom and erection of outbuilding/garage. **SUPPORT**

On the proviso a condition is applied that the garage is exclusively used for vehicle / general storage and not occupied as a dwelling. If this is not achievable the Council withdraws their support.

CB/19/02689/FULL and CB/19/02690/LB

Location: 7 High Street

Proposal: Demolition and replacement of porch and erection of single storey side extension with glazed link to existing dwelling.

No comments submitted, the requests expired (14/10/19) before the meeting was held.

CB/16/05438/OUT

Location: Land at Former Readshill Quarry, Back Street

Proposal: Planning Appeal **Appeal Dismissed and Planning refused**

The next Parish Council meeting will take place at the Methodist Church Hall at 7.45pm on Tuesday 26 November

Character Assessment of the Parish

The Village is creating a **Character Assessment of the Parish** to inform and help support design policies in the Neighbourhood Plan. If you 'Google' Character Assessments Neighbourhood Plan, you will find examples of how other Parishes have done this and published theirs. The character assessment describes the distinct appearance and feel of a road or area. It is important this is documented because all developments are assessed against the character of the area. ***Surely, we would want any development to conserve or enhance the unique qualities of the local area wouldn't we?***

How well do you know where you live? Could you describe it and take some pictures?

If so, I would love to hear from you as this could help form the basis of a Character Assessment of Clophill. I'm looking for help with:

- The Green and Conservation Area
- Cainhoe Rd and Readshill
- Back St/Mill Lane/Kiln Lane
- Great Lane/Little Lane/Church Path
- Shefford Rd/Jacques Lane into Beadlow

Land south of the A507 has been done – but we are happy to take additional material.

We would also welcome assessments on any areas not listed above. If you would like to chat through how this works, please contact me with your details and I'll happily give you a call.

Steve Rodell – Chair Clophill Parish Council
07738 182407 / steve.rodell@clophill-pc.gov.uk

What's on in and around Clophill

NOVEMBER



Sunday 10th

Remembrance Sunday St Mary's Church, 10:15am.



Saturday 16th

Abba Girls Clophill Village Hall, 7:30pm. *See poster in this issue*



Saturday 23rd

Quiz Night St Mary's Church, 7:15pm for 7:30pm. *See poster in this issue*



Thursday 28th

Wreath Making Clophill Preschool, Clophill Village Hall, 9:15am.
See poster in this issue



Saturday 30th

Christmas Market Clophill Methodist Church, 12noon - 4:00pm.
See poster in this issue

DECEMBER



Sunday 1st

Christmas Fair Newbury Farm Silsoe, 10:00am – 4:00pm.
See poster in this issue



Thursday 5th

Flower Club Xmas Demo Clophill Village Hall, 6:45pm for 7:30 pm start.



Wednesday 11th

Christmas Lunch St Mary's Church, 12noon – 4:00pm.
See poster in this issue

On throughout the month...

Tuesdays...in term time

- **Clophill Preschool - Stay and Play**
9.30am-10.30am Village Hall, See 'Village Groups' for contact details

Wednesdays...

- **Tea and Chat** 10.30 to noon, Methodist Church

Thursdays...

- **Thursday Leisure Club** 2pm, St Mary's Church

Fridays...

- **Clophill Toddler Group** 10am-11.30am,
Village Hall, See 'Village Groups' for contact details

One Saturday a month...

- **Messy Church** 4pm-6pm, Clophill Methodist Church. Dates: Nov 16; Dec 14.
See 'Village Groups' for contact details.

CHURCH SERVICES

Regular services at St Mary's Church, Clophill

1st Sunday 8am, Holy Communion;
10.45am, Family Praise

2nd & 4th Sundays 10.45am, Parish Communion

3rd Sunday 10.45am, Morning Prayer/Praise

5th Sunday 10am, Benefice Services

Regular services at Clophill Methodist Church

1st, 2nd, 4th, 5th Sundays 10.30am Morning Service

3rd Sunday 10.30am All Age Worship Service

If you have any diary dates that you would like included on this page,
please email clophillspotlight1@hotmail.co.uk

Parish Registers for November

1819

Marriages

Nov 1 Benjamin Clay of Sandberry (?)
Bucks to Mary Butcher

Burials

Nov 7 John Matthew
Nov 9 Edward Horn
Nov 15 Alice Stephens (?)
Nov 18 Richard Matthew
Nov 29 Mary Horn

1869

Baptisms

Nov 28 William Parkinson
John Tingay

Burials

Nov 9 John Whittemore, 46
Nov 18 Joseph Izzard, 76
Nov 18 William Bushby, 2
Nov 19 Henry Wheeler, 20
Nov 21 Sarah Izzard, wife of Joseph
above, 68
Nov 26 Ann Willison, 73

1919

Baptisms

Nov 23 Doris Gwendoline Brown
William Percy Stanley Richardson
Nov 30 Herbert John Stuart Webb
of Chicksands

1919 *(Continued)*

Baptisms

Nov 30 Winifred Emma Sharman
Ada Mary Louisa Lowe,
father a soldier
Robert Henry White of Edmonton,
father a demob soldier

Burials

Nov 8 Florence Lilian Platt, 1 month
Nov 17 Joseph Roberts, 54
Nov 18 John Taliman (?), 84

1969

Baptisms

Nov 2 Andrew Peter Chapman
Nov 23 Andrew Douglas Caldwell

Burials

Nov 27 Christopher Arthur Bertram
Izzard, 60

RECENT REGISTERS

Funeral omitted in error last month,
Methodist Church
Aug 30 Kaye Anthony Davies, 78

Funeral St Mary's Church
Oct 23 Violet Margaret Coleman, 70

An Edwardian Menagerie in Ampthill

Monday 2nd December



From ostriches pulling carts to stray sloth bears having their chins tickled in the local pub, Ampthill has seen it all. This talk covers the history of the menagerie and its ultimate fate.

Speaker: Janice Tuckett

With seasonal mince pies and wine.

Visitors are very welcome!

Lecture Theatre, Flitwick Library MK45 1QJ

7.30 for 7.45pm. £2 for members and £3 for visitors, payable on the door.

Further details: clive.makin@ntlworld.com Tel: 01582 655785

www.adalhs.org.uk

Ampthill & District Archaeological & Local History Society



Village groups

Beverley Court	860920
Brownies	https://enquiryym.girlguiding.org.uk
Clophill Community Care	Duty Contact 07791 773705
Clophill Heritage Trust	Ali Bradbury 07894 710001
Clophill Preschool	Imogen 07765 887868
	Chris 07936 006381
Clophill St Mary's C of E Lower School & Nursery	Emma Topliff 860206
Clophill Toddler Group	Hannah Compton 07535 705711
Clophill United Charities	Richard Pearson 861110
Conservation Group	Brian Adams 862297
Flower Club	Gillian Hill 860539
Friends of the Cheshire Home	Sue Pearson 861110
Funzone After School Club	07903 167493
Greensands Community Choir	Luke Howard 07975 520085
Indoor Carpet Bowls	Tony Meredith 860754
Messy Church	Victoria Higgins 07920 568861
	victoriajhiggins@hotmail.co.uk
St Mary's PTA	Julia Skelton 07774 993973
Scouts and Cubs	www.scouts.org.uk/get-involved
Tea and Chat	Anita Errick 860695
Village Hall Booking Secretary	Marilyn Browning 07821 643936



THREE KINGS CHRISTMAS TREES

Fresh Cut Christmas Trees

Direct from the Grower

Please come and visit us and have a look around
All trees are displayed inside

Opening from:
SATURDAY
30th November



9 am - 6pm
7 days a week

GROWS WELL
SEVEN ACRES NURSERY, SHEFFORD ROAD,
(BEADLOW) CLOPHILL. SG17 5PL

Useful numbers

Gas (Emergency)			0800 111999
Electricity (Emergency)			0800 7838838
Emergency Fire/Police/Ambulance			999
Water/Sewage (Anglian Water)			0845 7145145
Telephone	(Customer Services) 150	(Faults)	151
Highways Department (Central Bedfordshire Council)			0300 3008049
Benefits Agency (Bedford office)			01234 361500
Registrar's Office (Births/deaths/marriages)			0300 3008089
Rail (Enquiries)			0845 7484950
Buses 01234 262151	(Link A Ride) 01525 840511	(Flittabus)	01582 406561
Luton Airport			01582 405100
Swimming	(Flitwick) 01525 717744	(Robinson Pool)	01234 212479

LOCAL GOVERNMENT

Central Beds Offices (Chicksands)			0300 300 8000
Mid-Beds MP		Nadine Dorries	01462 811992
Central Bedfordshire Councillors		Michael Blair	01525 404513
		Paul Duckett	07988 184061
Clophill Parish Council	(Clerk)	James Stirling	01462 887226

HOSPITALS

Bedford (North & South)	01234 355122	Admissions	01234 261150
		Appointments	01234 359012
Luton & Dunstable			0845 1270127

DOCTOR'S CLINICS

Ampthill	(Houghton Close) 01525 300898	(Oliver Street)	01525 631395
		(Greensands)	01525 631390
Shefford	Enquiries 01462 818620	Appointments	01462 810034
Barton 01582 528700		Flitwick	01525 715300

POLICE

County Police HQ		Non Emergency	101
Ampthill Station			01234 841212
			101

CHURCHES

St Mary's Parish Church		Rev'd Dean Henley	01234 381235
	(Church Warden) Rosemary Ilett	mandrilett@ontel.com	01525 860274
St Francis RC Church, Shefford		Ian Gordon	01525 860875
Clophill Methodist Church		Jim Davies	01525 860829
Baptist Churches (Ampthill) Doreen Gibbs	01525 862424	(Maulden) Ian Crawford	01525 634325
		(Shefford) Hazel Arnold	01462 812564

SCHOOLS

Clophill St Mary's C of E Lower School & Nursery	(Headteacher Mrs K Bingley)		01525 860206
Harlington Upper School , Harlington			01525 755100
Preschool	clophillpreschool@gmail.com	(Chris) 07936 006381 or (Imogen)	07765 887868
Redborne Upper School , Ampthill			01525 404462
Robert Bloomfield Middle School , Shefford			01462 628800



Future LuToN expansion consultation: Making best use of our runway

London Luton Airport Ltd is currently scheduled to consult on its expansion proposals from 16 October – 16 December 2019. The proposals will allow the airport to handle up to 32 million passengers a year by 2039, up from nearly 18 million today.

Consultation events will be held across the region – please see futureluton.llal.org.uk for further information and updates. Consultation event dates and venues will be published before the consultation begins.

DAVID JAMES

WWW.DAVIDJAMESKITCHENS.CO.UK



SAVE £££
BUY DIRECT

Call 01525 722230

NEW

KITCHEN & LIGHTING
SHOWROOM

5 MINUTES
FROM CLOPHILL

DESIGN
MANUFACTURE
INSTALL

Pulloxhill
Business Park
Greenfield Rd
Bedford
MK45 5EU



GCC
Greensand Community Choir
LOVE SINGING!
sing with an exciting local choir...



Come along to your local **community choir**,
for men and women of all singing abilities!
Mondays, 8.00-9.30 pm at St. Mary's Church, Clophill.

- Come and sing with an exciting new local choir led by a professional musical director
- Uplifting music in a variety of styles: musicals, classic pop, folksongs, sacred and world music
- Welcoming singers of all abilities - no audition, no need to read music!
- New members - come along any time for a free taster



Enquiries to:

greensandcommunitychoir@gmail.com

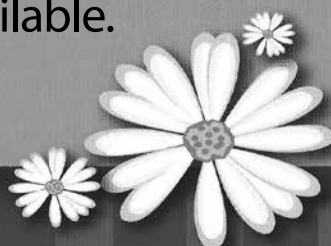
or ring Luke on: 07975 520085

Daisy Cooper

Spring cleans, one off cleans and
moving home cleans all available.

Daisycooper22@hotmail.co.uk

Please call 07913 332914



Keeping your home as fresh as a Daisy

Hypnotherapy...*the Mindful Way*

For help with: anxiety, stress, IBS, migraine mindful eating,
insomnia & many other conditions. For more information or
an initial consultation please contact Ann. Tel: 07791171980

Email: enquiries@pathwaysofmindfulness.co.uk
www.pathwaysofmindfulness.com



Painter and Decorator

Call Chris : 07950714579



*do you want your
home brightening up?*

all interior & exterior work

no job too small!

free no obligation quote

*25 years experience
& fully insured*

*facebook: @christopherthepainter
email: chris.minihane@btinternet.com*

JK Garden and Landscape Services Ltd



We offer...

full landscaping service

patios

fencing

decking

new lawns

driveways

all garden maintenance

Contact us on **0791 2028254**
or at **jkgardening@hotmail.co.uk**

You can also find us on Facebook

TALKEASY Coaching

***Do you want to make a fundamental
difference to your life and don't
know where to start?***

My name is Lynn and I am a Life Coach.

I have extensive experience helping
with every aspect of life, e.g. support with
family issues, or your own financial,
emotional, or physical wellbeing.

My most recent project has been supporting
young teenagers in their place of education.

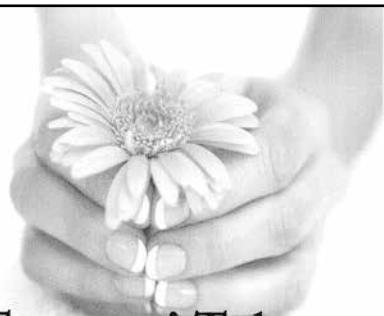
Be the change in your life
and contact me for a free,
no obligation chat.



07557948644

01525860384

lynncllements87@gmail.com



Tammys' Talons

Nail Technician

Gel. Manicure and Pedicure

IZABEL HAMMON
REGISTERED NAIL TECHNICIAN
CALGEL **IZ** by OPI

Tammy Kirby

Clophill, Bedfordshire, MK45 4AW

Tel : 07968379309

tammystalons@gmail.com

Linda Allsop

PHYSIOTHERAPY



Chartered
Physiotherapist
with over 30 years
experience in both
the Private Sector
and the NHS.

Home visits
available.
Based in
Graverhurst

01462 711978 | 07989 257026
www.linda-allsop-physio.co.uk
lindaallsop@btinternet.com

USING PARABEN & SULPHATE FREE, 100% VEGAN,
CRUELTY FREE PRODUCTS



A Cut Above Hairdressing

by Rachel

In the comfort of your own home
cutting & styling specialist

call or text : 07896009382
facebook: acutaboverachel

Salon experienced
Fully insured
Fully qualified to Level 3 Standard.

PERSONAL DOG WALKER

£10 per hour
£7 per half hour
£6 per visit

- First Aid Certified
- Insured



Text or call Corrane on
07576 473373 or **01525 630740**
 Corrane's personal dog walking



Professional friendly accountancy services

Fully qualified,
Free initial consultation,
competitive fees
Sole traders, Ltd companies,
bookkeeping, payroll,
CIS, VAT & Tax.

sally@sjtax.co.uk
01234 831997
07899 808592

V.J. EDWARDS

Plastering & Building Services

Certified Plasterer by British Gypsum – All works guaranteed for 2 years

- Internal and external Plastering,
- Special Renders: Krend, monocuhe and Cemrend
- Stud Partitioning
- Plaster Boarding
- Garage conversions, Kitchens & Bathrooms and small extensions



Telephone M: 07970 011605 H: 01234 740400

Telephone
**01525
860526**

The Stone Jug

A Free House

BACK STREET, CLOPHILL

Despite many protestations from 'the Matriarch', Joyce is still very much at the helm (or so we tell her!). Vikki has been demoted (but she's still here, don't you know!) and Mark has moved into pole position and is doing exceptionally well. We're still very much a family-run village pub with our late dad's saying still ringing true – 'We're a proper pub for proper people'. Cheers!

- 5 real ales, including 2 guest pumps that change frequently (see our Facebook page for details)
- selection of wines and Prosecco by the glass – or even better, by the bottle
- home-cooked lunches Tues-Sat, 12pm-2pm



REMEMBER OUR MOTTO

"A VISIT TO THE JUG IS BETTER THAN GOING TO A PUB"

CHEERS JOYCE, VIKKI & MARK

www.stonejug.co.uk

www.facebook.com/thestonejugclophill



MOTHERING THE MOTHER THROUGH

pregnancy, childbirth & beyond

I offer bespoke practical and emotional support to mothers and families perinatally. Find out how I can protect your birth space and support your journey on your terms.

CONTACT YOUR LOCAL DOULA ROSIE: 07543 280171 WWW.ROSIECARTERSUSO.COM

OVENCLEAN.

The original oven cleaning specialists

All types cleaned:



- Ovens
- Grills
- Ranges
- Hobs
- AGAs
- Microwaves
- BBQs
- Extractors

Fully insured, and DBS Police Checked

For a quote call Clive direct on:
07949 233089 or phone the
Office on **0800 840 7127**



www.ovenclean.com



Ovenclean Clive Burgess

Warm Property Services



Heating



Plumbing



Bathrooms



Maulden based. British Gas trained engineer with more than 10 years' experience. Discount for over 60's.

Free no obligation quote & advice.



Boiler and heating installations



Power flushing



Landlord Safety certificates



Bathroom suites



Plumbing and drainage



Fires and cookers

07716 478794 01525 839342
www.warmprops.co.uk

THE BLUECAT



LUXURY CATTERY

Tel: 01525 861416
www.thebluecat.net

Find us on Facebook @thebluecattery
or email us at enquiries@thebluecat.net

The Bluecat is a luxury cattery set in the quiet area of Jacques Lane in Clapham. With just 14 cat chalets, we have time to fuss, pamper and play with your cat to its heart's content whilst in our care. Please call for further information.

Misty Double Glazing?

Over 30
Years
experience.
FREE
Quotes

Over 30
Years
experience.
FREE
Quotes

**KEEP YOUR WINDOW FRAMES...
... WE JUST REPLACE THE GLASS!**

• UPVC • Aluminium • Or Wood

Because we replace just the glass the repair is a
Fraction of the cost of a complete replacement window.

BEFORE



AFTER



mistydoublinglazing.co.uk
QUALITY GLAZING SERVICES

01525 876808

WE ALSO REPLACE BROKEN...

• Glass • Handles • Hinges & Locks
AND REPAIR...Patio Doors & Conservatories!

Nicola Rayner Fitness

Feel great in 2019!

BOXWORX

Fun, effective pad work based boxing class for a great stress relieving total body workout!

Wednesday 8-9pm

Clophill village hall

Limited spaces available booking essential

Pilates & Men's Core Strength

Improved core strength and posture through low impact stretching and spine safe conditioning exercises. Delivered with a positive, caring approach in a fun and friendly environment to leave you feeling energized!

Classes in Flitton & Silsoe

Limited spaces available booking essential

Classes also in the surrounding area

Legs, Bums & tums

Zumba

Ladies Boot Camp

For full timetable or to book contact Nicola
fitone@live.co.uk 07801 510988

E.T. Accountancy Services

Experienced Chartered Accountant and Chartered Tax adviser based in Clophill providing a full range of accountancy and taxation services to businesses and private individuals.

To arrange a free initial consultation please telephone me on 01525 590465 or email emma@et-accountancy.co.uk

*Chartered Accountant and
Chartered Tax Adviser*

Emma Thoulass FCA CTA
www.et-accountancy.co.uk
01525 590465

Take out an annual ad in Spotlight

Black & White per year

One-sixth	£53	H31 x W126mm
One-quarter	£69	H92 x W61mm
One-third	£80	H61 x W126mm
Half page	£112	H92 x W126mm

Please email our Advertising Manager
at ads@clohillspotlight.co.uk



be hot!

with
Slimming World

TUESDAY

Silsoe

Silsoe Community Sports Centre
Chestnut Avenue, MK45 4GP
5:30pm & 7:30pm

Tel / Text: Liz for details
07973 532793

slimmingworld.co.uk
0344 897 8000   



Welcome to Clophill St Mary's C of E Lower School and Nursery

A small, friendly, Voluntary Aided Church of England Lower School, graded 'Outstanding' by Ofsted, with close links to the local community.

St. Mary's is a Values based school taking children aged from 2 years 7 months to 9 years and providing them with a framework for living, tightly woven into the positive Christian ethos of the school.

Breakfast and after school care for all ages.

Acorn Nursery

for preschool children aged 2 years 7 months to 4 years with breakfast and after school care available.

Providing 30 hours free childcare entitlement.



To arrange a visit, please call us 01525 860206
or email: generaladmin@nursery@clophillstmarysschool.co.uk
For more information visit: www.clophillstmarysschool.co.uk



15% Early Booking Discount
on all 2020 River Cruises

PLUS Free Excursion Package
OR Free Home Pick up on below cruises



Danube Rhapsody

6 April 2020 - 7 nights

Passau Roundtrip - *Amadeus Silver II*

River View from **£1,659**

Treasures of Burgundy & Provence

9 April 2020 - 7 nights

Lyon Roundtrip - *Amadeus Provence*

River View from **£1,359**

Classical Rhine

15 April 2020 - 7 nights

Amsterdam to Basel - *Amadeus Silver III*

River View from **£1,769**

Tulip Serenade

6 May 2020 - 7 nights

Amsterdam Roundtrip - *Amadeus Queen*

River View from **£1,499**

Lead-in fares are based on 2 adults sharing the lowest available River View Cabin. Solo occupancy prices are available on request. *15% early booking discount (already included in advertised fare) applicable for all new bookings made by 30.11.19. Prices include economy flights from London, non-UK transfers, hotel stays where indicated and port charges. Subject to availability and can be withdrawn at any time. Free Excursion Package or Free Home Pick Up is applicable to new bookings made by the 30.11.19. Full terms & conditions apply.

01234 326778

24 Mill Street, Bedford MK40 3HD

sales@cruiseselect.co.uk

www.selecttravelholidays.co.uk

www.cruiseselect.co.uk



BOOK WITH CONFIDENCE
ABTA & ATOL protected



ARCHITECTURAL DRAWINGS AND BUILDING DESIGN SERVICES

Professional Architectural design services provided for all types of private residential building projects including extensions, loft/garage conversions, garages and outbuildings through to new build dwellings with all necessary council approvals obtained.

For free estimates and advice contact Steve Coates on Flitwick 01525 862457 or 07960 215053.

stevecoates72@gmail.com

S & S Coates Surveying & Design, Unit 4 The Courtyard,
r/o 13 High St, Clophill, MK45 4AB.



CBuildE
chartered building engineer



A L & G ABBOTT

F u n e r a l D i r e c t o r s

~ Established 1832 ~



Christmas, a time for celebrating and spending time with friends and family, but when you have lost someone it can be a lonely and isolating time of year.

So, we wanted to remind you about our Bereavement Listening Service at Abbotts which is entirely free to our families.

Our very experienced and empathetic practitioner Chere will see you at Abbotts and help you through this difficult time.

(This service is available to our families and is by appointment only)

Tel 01234 843 222



www.abbott-funerals.co.uk
bereavement@abbott-funerals.co.uk
A L & G Abbott, 150 Bedford Road,
Kempston, MK42 8BH

AIMS

Tim Kemp BA FCA
Top Barn Rectory Road
Steppingly MK45 5AT

TEL/FAX : 01525 717141
MOBILE : 07900 823 012
www.aims.co.uk
e-mail: timk@aims.co.uk

- ◆ **Professional** service providing for all your accounting and tax needs
- ◆ **Practical** advice based on 20 years experience in **running** businesses
- ◆ **Personal** approach with fixed fees relevant to the work **you** need
- ◆ **Friendly, local** accountant supporting the community for over 20 years

Please call for a free, no-obligation initial meeting

ACCOUNTANTS FOR *business*

Hills-Howson Financial Services

Financial adviser appointments available in your home or our office

The Old Post Office
53 High Street
Claphill
Beds MK45 4BE

Tel: 01525 861803
www.hills-howson.co.uk
hills.howson@btconnect.com

Including:-

Investments

Pensions

Protection

Annuities



W&H PEACOCK

AUCTIONEERS & VALUERS

Weekly Auctions

Visit the Bedford Auction Centre to enjoy the excitement of a live auction.

Antique & Modern Furniture • Clocks • Books
Ceramics & Glassware • Pictures & Prints
Bicycles • Jewellery & Watches • Collectables
Garage Tools & Equipment • Household Electrical Items
Office Furniture & Equipment • Retail Products & Stock
Vehicles • Horticultural & Commercial Equipment
Building Materials • Garden Furniture & Effects

Eastcotts Park, Wallis Way, Bedford MK42 0PE 01234 266 366 peacockauction.co.uk

THE COMPUTER MAN



Got a problem with your computer and don't know what to do? Suffering with a virus or spam?

Don't hesitate! Ring your local computer expert

**Remote repairs or home visits
(Day, evening & weekend)**

**Lap top/desk top loan
(Free pick up & drop off in local area)**

Comprehensive health check from £35 (**Special Offer** £35 - normally £40)
Refurbished fl at screen available from £15 • Refurbished base units available from £99



Contact Stephen Amos
07976 718567
the.computerman@ntlworld.com





rincontuition - Spanish & Maths

Expand your knowledge. Boost your confidence

Phone 01525 860743 - Mob 07952 667814

Exam techniques and preparation. Revision and practice papers: SATs, 11+ and GCSEs

Spanish for business or pleasure, all levels. GCSE & A-levels

Skills development: conversation, reading and writing

Maths: Boost your confidence and abilities

KS1, KS2, KS3, SATs, 11+ and GCSE practice papers.

References available. Reasonable rates

Enquiries: 01525 860743 - 07952 667814

rincontuition@yahoo.com



LIZZIE BROWN PET CARE & HORSE GROOM SERVICES



**DOG WALKING
PET POP-IN & FEEDING
PET/HOUSE SITTING
EQUINE GROOM***

(*BTEC Cert Equine Management)



Lizzie Brown 01525 862459 / 07500 989 700

Reliable friendly local service

Short notice available (no contract commitments)

Insured Quality references available CRB checked*

*(Disclosure & Barring Service)

Hairs & Graces

Unisex Salon



Wet Cut £19
Cut & Blow Dry £30
Colours start from £27
Special OAP rates

Opening Hours:

Monday	9.30-2.00
Tuesday	9.30-5.00
Wednesday	9.30-5.00
Thursday	9.30-8.00
Friday	9.30-8.00
Saturday	9.30-4.00

Zoe, Donna, Gemma
and Amanda look forward
to welcoming you.

Ring now to book an
appointment.
Appointments also
available with our Barber.

Burgoine Business Centre, 117 Clophill Road, Maulden MK45 2AE

01525 861491 • Loads of free parking



GARDEN DOCTOR

Rob McLeod

Pruning Specialist

Professional, Local, Experienced

- * All tree and hedge work undertaken
- * High standard of work
- * Waste material recycled for compost
- * Free Quotations
- * Local, reliable service you can trust

Tel: 07763 239340 or 01525 861568

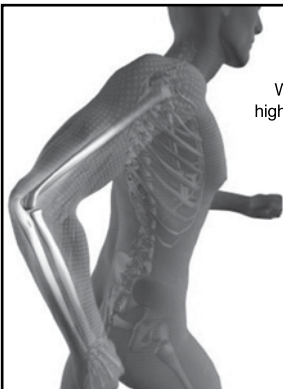
email: rob@gardendoctor.org.uk

www.gardendoctor.org.uk

Call the Garden Doctor and bring Good Health to your Garden



Hedging & Pruning
Shrubs & Fruit Trees
Tree Surgery & Removal
Fully certificated and insured



We'll get you up and running!

We offer the very best physiotherapy care from a friendly approachable team of nine highly trained Chartered Physiotherapists all members of the Health Professionals Council

Expert treatment including:

Neck/Back/Hand and Tennis Elbow Pain
Headaches/Migraine/Sciatica
Incontinence/Pelvic/SIJ/SPD/Pregnancy Back Pain
Sprains/Strains/Torn Ligaments
Whiplash/RSI/Osteoporosis/Sports Injuries

Specialist Physiotherapists:

Neurological, Paediatric, Vertigo and Dizziness

We also offer complementary treatments:

Acupuncture, Reflexology, Massage, Indian Head Massage,
Chinese Herbalist, Lymphatic Drainage and Pumps



Tel: 01525 720882 www.chartered-physiotherapy.co.uk Email: amphillphysio@btconnect.com

7 Station Square, Flitwick, MK45 1DP



The Happy Place.co.uk

On the Green beside the Post Office every Friday, 3.30-7.30pm

We are your local mobile fish and chip van, we have been parked on the green every Friday for the past 6 years. We serve only the highest quality produce, cooked fresh to order and served to you by our friendly staff.

Why don't you pop down and come and Try Our Fry!

To avoid waiting in the cold, give us a call to

place your order on: 07833 786108

A big thank you to all our customers who have loyally supported us over the past couple of years.

Chapman & Kirby Heating

Gas, Plumbing & Heating Installations

Gas Safe Registered

Boiler Servicing & Maintenance



Call us now

Tel: 01525 861255 Mob: 07831 132308

Email: info@chapmanandkirbyheating.co.uk

1C, Old Silsoe Road, Clophill, Beds., MK45 4AR



We take care of the details, so you can say goodbye the way you want to.

NEVILLE. Because there is a difference.

AMPTHILL

The Old Church, Flitwick Road MK45 2NT

t: 01525 406132

e: ampthill@nevillefuneralservice.com

SHEFFORD

24 Clifton Road SG17 5AE

t: 01462 813258

e: shefford@nevillefuneralservice.com

www.nevillefuneralservice.com








If you've been thinking about enjoying a great lawn this year – green, lush and weed-free, why not contact us today and let us bring your lawn to life.

We provide four seasonal treatments, as well as beneficial treatments to keep your lawn in tip-top condition - prices start from just £5* per month.

PRICES FROM
£5*
PER MONTH

Ask us about our annual plans, which allows you to both spread the cost and save up to 25%.

GreenThumb
LAWN TREATMENT SERVICE

Simply call: 01234 709345 or
visit: greenthumb.co.uk   

*Based on a lawn size of 40m²

Baths, Toilets &
Showers
Sinks and Taps
Guttering
Leaks and Burst Pipes
Drainage
Handyman jobs also



Silsoe based
No call out fee – free estimates
Fully insured and guaranteed
No job too small
07720 723653 01525 864859
info@betaplumbing.co.uk
www.betaplumbing.co.uk

Washing Machines Dishwashers Dryers Electric Ovens Repairs Servicing Sales



A local family business offering
a quality service at a competitive price
Est. 1981

Tel: CLOPHILL 860148
or Tim Downing direct on 07969 545 276

A member of the White Goods Trade Association
Fully Insured

the
café

AT

W&H PEACOCK
AUCTIONEERS & VALUERS

Visit

www.peacockscfe.co.uk
for more details and to view
our current menu.

Eastcotts Park, Wallis Way,
Bedford, Bedfordshire
MK42 0PE

01234 266 366



**View the salerooms for our upcoming auctions
and then relax with a coffee and a slice of cake.**

Our unique café in Bedford Auction Centre with free wi-fi and
views of the salerooms, comfortably seats over 100 customers.

We serve cooked breakfasts, paninis and sandwiches, light
lunches and snacks plus a range of hot and cold drinks.

Senior Citizen discounts available

Open Monday to Thursday from 8.30am - 3.30pm
Extended opening on Friday to 7pm. Saturday 8.30am - 4pm
(Last orders 1 hour before closing)

LOCAL ALLOY WHEEL REFURBISHMENT


mintalloys
complete alloy wheel refurbishment

Tel:
01525
860069

Alloy Wheel Repairs

Diamond Cut Alloy Wheels Repaired On Site

Powder Coat Primers & Lacquers

Fast Turnaround Alloy Wheel Welding

Tyres At Competitive Prices

NEW for 2015 - 4 Wheel Alignment Service

www.mintalloys.co.uk

Root 'n Branch

Your Local Friendly & Reliable Gardener

All aspects of Garden Maintenance undertaken
• PRUNING • MOWING • WEEDING • PLANTING • HEDGING

Southfields, Shefford
email: whooley@hotmail.co.uk

Tel: 07771 537385

Public Liability
Insured

Conifer
Kennels

Quality
BOARDING
DAY BOARDING
HOLISTIC FOOD SHOP
GROOMING & GOING HOME BATHS
OFF SITE NATURE WALKS
QUALIFIED TEAM



nutriment
ENHANCED raw diet formula

www.coniferkennels.co.uk

01525 860339



The Causeway, Clophill, Beds. MK45 4BA

Akela

WILD WASH

YAKERS

SKIPPER'S

Eden
Holistic Pet Foods

GREEN & WILDS
Naturally for pets

Pre-Order
Service Available

STUART DREW ELECTRICAL SERVICES

MEMBER OF THE ECA
PART P CERTIFIED QUALIFIED TO 18TH EDITION

From extra lights & sockets, to re-wires. Fault finding and electrical safety certification. For a professional, courteous service with free estimates & all work guaranteed, please call me

29 Lincoln Way
Harlington
Beds
LU5 6NG

Fully qualified & insured
30 years experience

Telephone:
01525 875965
07941 812662



Compu-Doc

PC / laptop crisis ?

01525-402227

Call the Doc for -

Hardware & software

Diagnosis & treatment

john.stafford@compu-doc.co.uk

BURGLAR ALARMS

New Alarms Fitted or Upgrade Existing Alarms

BURGLAR ALARMS

We fit New Alarms - Wired or Wireless Systems

We can service and maintain your existing alarm

CCTV

We fit high quality systems to maximise your security.

Access your CCTV via the internet or mobile.

DOOR ENTRY

We fit a range of quality video and audio intercoms to suit your needs.

We are a family run business with over 35 years experience in home security and crime prevention.



www.maximumsecuritysystems.co.uk

Contact:

01582 864138 / 07746 111520

For a free quote and consultation

McCaffrey

Your local resource for residential build, refurbishment and maintenance



General building works
Extensions
New builds
Internal refurbishment/alterations

Brickwork
Carpentry
Painting & decorating
Purpose made joinery

Plumbing and heating
Electrical installations
UPVC windows & doors
Garage conversions



call us to discuss your building requirements

01525 861041

info@mccaffreybuild.co.uk www.mccaffreybuild.co.uk

ADAM IN YOUR GARDEN

**TREE SURGERY, HEDGE TRIMMING,
TURFING, FENCE MAINTENANCE,
DECKING, PATIO CLEANING**



Qualified, Fully Insured, Competitive Rates
Free Estimates

TEL: 01582 518954 MOB: 07828 490360

Web Site: www.adaminyourgarden.co.uk



Based near Toddington, Bedfordshire.

We rescue, rehabilitate & re-home stray & abandoned cats.

We have lots of beautiful cats waiting for loving homes.

Ring the shelter on 01525 875993

or Sue on 01582 650167 to arrange a visit.

Registered Charity No. 1098984

Visit our website @www.straycatrescue.org.uk



EST.
1989

- Suppliers of traditional and modern equipment
- Working whirlpool & spa baths, power & steam shower systems on display
- Over 40 settings on display
- Complete installation service if required
- Personal friendly service from a family run business
- Wall and floor tiles
- Accessories
- Mirrors
- Bathroom furniture
- Heated towel rails
- Saunas
- Bathroom cabinets

SHEFFORD 01462 627002

www.bathroomvogue.com

Unit 4A, Shefford Industrial Park, St Francis Way, Shefford SG17 5DZ

Hire Clophill Village Hall



Wedding Receptions
Birthdays & Special Occasions
Dances and Discos
Club & Community Meetings & Activities

Phone: 07821 643 936

Mail: Clophill.villagehall@gmail.com Web: www.clophillvillagehall.co.uk

ROGER STOREY

YOUR LOCAL PAINTER AND DECORATOR

Friendly and Reliable Service

Many Years Experience

Please phone: **01525 861253** or **07800 777615**

ANDREW BAKER WINDOWS

9 SHEFFORD ROAD
CLOPHILL BEDS
MK45 4BT

SPECIALISING IN UPVC WINDOWS,
DOORS, CONSERVATORIES,
FASCIA, SOFFITS, GUTTERS AND
CLADDING. ALSO AVAILABLE FOR CARPENTRY
WORK. NO JOB TOO SMALL OR LARGE.

20 Years experience.
Free local quotes.

FENSA

Fensa Registered
FIVE YEAR GUARANTEE

Contact Andrew: 01525862804 / 07825017855

Email: abakerwindows@gmail.com

Advertisers index

Airports

London Luton Airport 26

Architectural Services

S&S Coates Surveying & Design 34

Auctioneers & Valuers

W&H Peacock 37

Bathroom Services

Bathroom Vogue 46

Builders & Carpenters

McCaffrey Build 45

Stuart Benson Building Projects IFC

VJ Edwards 30

Car Services/Repairs

A&F Motors Ltd IFC

Mint Alloys 43

TC Coomber Car Services BC

Chimney Sweep

Poppins Chimney Sweep IBC

Cleaning Services

Daisy Cooper 27

Ovenclean 31

Computer Services

Compu-Doc 44

The Computer Man 37

Electrical Services

Stuart Drew Electrical Services 44

Financial Services

AIMS Accountants 36

ET Accountancy Services 32

Hills-Howson Financial Services 36

MB Accounting Services 48

SJ Tax & Accounting Services 29

Food and Refreshments

The Cafe at Peacocks 43

The Happy Plaice 40

Funeral Services

AL&G Abbott, Funeral Directors 34

Neville Funeral Service 41

Garden Services

Adam in your Garden 46

Garden Doctor 39

Green Thumb Lawn Treatment 42

JK Garden and Landscape Services 28

Root 'n Branch 44

Health & Beauty

A Cut Above Hairdressing 29

Ampthill & Flitwick Physiotherapy 40

Doula Root 30

Hairs & Graces 39

Linda Allsop Physiotherapy 29

Nicola Rayner Fitness 32

Pathways of Mindfulness 27

Slimming World 33

Tammys' Talons 28

Home Improvements

Christopher The Painter 28

Roger Storey - Painter & Decorator 47

David James Kitchens 26

Music and Entertainment

Greensands Community Choir 27

Nursery Schools

Clophill PreSchool BC

Clophill St Mary's C of E

Acorn Lower School and Nursery 33

Pet & Animal Services

Conifer Kennels & Cattery 44

Lizzie Brown Pet Care 38

Personal Dog Walker 29

Stray Cat Rescue 46

The Bluecat Luxury Cattery 31

Plumbing & Drainage Services

Beta Plumbing 42

Chapman & Kirby Heating 40

Warm Property Services 31

Print Services

Fidelity Design & Print IFC

Public Houses

The Stone Jug 30

Repair Services

Tim Downing Repair Services 42

Security Services

Maximum Security Systems 45

Travel Services

Select Travel Holidays 34

Tuition and Coaching Services

Rincon Tuition (Spanish & Maths) 38

TalkEasy Coaching 28

Village Hall

Clophill Village Hall 47

Windows/Replacement

Andrew Baker Windows 47

AW Windows IBC

Misty Double Glazing 27

IFC = Inside Front Cover IBC = Inside Back Cover BC = Back Cover

MB

ACCOUNTING SERVICES

accounting solutions for the

Self-Employed and **Small Business**

including

HMRC tax returns • Accounts • Bookkeeping

For a totally confidential service at **very competitive rates** contact

Richard Fairholm T: 01525 861087 M: 07714189994 E: mbaccounts@btinternet.com



Poppins Chimneys

**Chimneys Swept
Wood and Multifuel Stove
Installation & Liners**

Great Service - Great Price!



01525 860424 or 07858 688785
mark@poppinschimneys.co.uk

**NO PRESSURE SALES – YOU DEAL WITH
THE OWNER FROM START TO FINISH**



- ✓ A-rated windows as standard
- ✓ Composite doors
- ✓ High security
- ✓ Bifolding doors
- ✓ Conservatories
- ✓ Fascias, soffits and guttering
- ✓ Insurance-backed guarantee
- ✓ Fensa certificate



Contact: ANDY WOOD

01582 536944 or 07796 272539
sales@awwindows.co.uk



See reviews from satisfied customers at awwindows.co.uk

Clophill Preschool

**Your local Outstanding Preschool,
based at Clophill Village Hall -
welcoming children from
2 years of age.**

We'll help your child to become an inventive
and creative learner. With access to a fantastic
outdoor area, our focus is on natural and
exploratory 'play with a purpose'.



**Call us today to find
out more:
07765 887868 or
07936 006381**

www.clophillpreschool.co.uk



**Collection
& Delivery**
SERVICE AVAILABLE
Please ask

**MOT'S CLASS 4/5L/7
CAR SERVICING & REPAIR
TYRES & EXHAUSTS
AIR CONDITIONING
DIAGNOSTIC CODE READING**

AMPTHILL
01525 406330

UNIT F, AMPTHILL INDUSTRIAL ESTATE, STATION ROAD, AMPTHILL, MK45 2QY