

Vol 41 | No.8

FREE

CLOPHILL SPOTLIGHT

OCTOBER 2019

**LOVE YOUR
LOCAL NEWS**

AMPTHILL PRINT CENTRE

**DIGITAL PRINTING
DESIGN & MARKETING
DIRECT MAIL**

and much more...

...and we're right on your doorstep at

Unit 24 Station Road Ind Est, Ampthill, MK45 2QY
(Just off the A507 Ampthill bypass, past the Post Office)

WE PRINT...

- Stationery
- Newsletters
- Menus & Tent cards
- Brochures
- Flyers & Leaflets
- Catalogues
- Books & Booklets
- Direct mail
- Training Manuals
- Banners & Posters
- Greeting cards
- Calendars
- Labels & Stickers
- NCR pads
- Folders
- Exhibition panels
- CD/DVD duplication
- Photocopying

3 DAY STANDARD SERVICE | SAME DAY AVAILABLE

www.fidelityprint.co.uk

Get a quote 01525 300001 quotes@fidelityprint.co.uk

fidelity

Unit 24 Station Rd Ind Est, Ampthill



MOTORS LTD

Tel: (01525) 860292

Tel: (01525) 404919

208 Clophill Road, Maulden, Bedfordshire MK45 2AF
89 Oliver Street, Ampthill, Bedfordshire MK45 2SA

**CAR AND COMMERCIAL VEHICLES
ALSO CLASSIC & AMERICAN CARS
SERVICING – REPAIRS – BREAKDOWN
SPRAYING – M.O.T.**



Stuart Benson Building Projects

**Design, Build and Maintenance including Interior Refurbishments,
Kitchen / Bathroom fitting, Tiling, Flooring, Skirting boards, Doors
Garage conversions. Exterior Decking, Patios, Driveways
Garden Offices/ Sheds**

Tel: 07946 579862 or 01525 403083

Email: benson.stuart@.googlemail.com



A word from the Editor...

Welcome back!

I am delighted to welcome back this month the Parish Council meeting report and planning updates.

Grateful thanks to Julie Benson for volunteering to write the report and to James Stirling for the planning updates and his ongoing support to Spotlight.



We have a pull out middle section from Clophill Heritage Trust. They are looking for your views so please do get involved and complete their survey.

Next month sees the return of articles by Sue Pearson. This series is titled **"Clophill's Serving Survivors of WW1"**. Look out for some interesting tales of heroism and service to our country.

Finally Spotlight needs volunteers to help with the distribution of the magazine, see page 2 for details.

Happy reading.



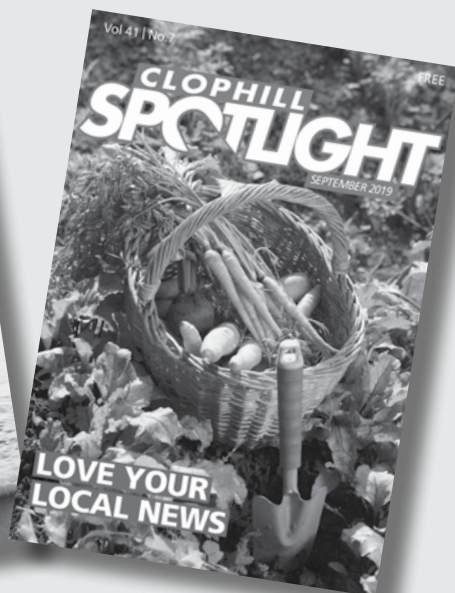
The magazine staff

EDITOR	Elaine Jones editorial@clophillspotlight.co.uk	07918 975823
ADVERTISING MANAGER	Emma Frost ads@clophillspotlight.co.uk	
DESIGN MANAGER	Chris Abrahams cmabrahams@yahoo.co.uk	
DISTRIBUTION MANAGER	Pete Liddle	860113
TREASURER	Richard Pearson	861110

Deadline for articles is 20th of the month

You can also read Spotlight online
www.clophillspotlight.co.uk

YOUR SPOTLIGHT NEEDS YOU!



We urgently need more volunteers
to deliver Spotlight each month.

We have vacancies for **2 delivery rounds**,
Townshot area (about 45 houses),
and Bedford road plus Moores Close
(about 32 houses).

If you can help, please contact Peter Liddle our delivery manager,
either email liddlewilton@madasafish.com or call **860113**.

Clophill Preschool News

Hi everyone - we love the Autumn term and this year it has started off so beautifully and busily! Our **Stay and Play** sessions **every Tuesday** morning are very full of activity, it's lovely to have new children explore our setting. It's also a great opportunity for children due to start with us to get to know our preschool, making their **transition** to us so much easier.



All children love the **outdoors** and those that come to us develop a real passion for **nature**, having fun as they **learn**. This term we have been comparing height with pine cones, collecting conkers to count with, exploring capacity in the mud kitchen;

developing physical strength and coordination as they climb the log hill, jump off the tyres and balance on the wooden trail; hunt for bugs and investigate them in books; plus story-telling and singing and signing together.



As we become more comfortable with our planning in the moment, we now offer **cookery** all morning. Children can choose to cook when they like, using one of the recipe cards to follow themselves, with Lisa on hand to bake their creations. Our planting has really taken off with a parent kindly bringing us a load of unwanted shrubs, while the new chalk board and the bike garage in the outdoor shelter are being used all the time.

Our developments are only possible through the hard work of our staff, the generosity of our parents and the active **fundraising** we do. If you would like to help, you can find us on www.easyfundraising.org.uk. Sign up to support us and every time you order from a huge selection of websites like Amazon, they will donate to us at no cost to you! We have our next **Happy School Bags** clothing collection on 6th November, all donations welcome and our **Christmas Market** Sunday 14th November 2:30pm to 5:00pm, if anyone would like a stall, just email.

We are also busy fundraising for others, our coffee morning in support of **Macmillan Cancer** raised an astounding £110! Rosemary from St. Mary's church visited last week, and our parents donated gallons of milk for her **Harvest** food collection, thank you everyone. We will also be holding a week of rambling in conjunction with Countryfile in aid of **Children in Need** in late October.

For us, connecting with our local community and embracing the wealth of backgrounds and experiences from our families and staff; helps our children to develop knowledge and understanding of the community and wider world: which we believe is invaluable. As we create a more enabling environment for our children, we see them exploring, persisting and engaging with greater involvement, and their learning really takes off. With our staff on hand to play and support, guide and teach, following the interests of the children, it is a winning combination.

- Contact Imogen on **07765 887868** or Chris on **07936 006381** or email clophillpreschool@gmail.com. Our website is www.clophillpreschool.co.uk

?? ?? ?? St Mary's Church. Clophill

21st Annual Quiz Night

Saturday 23rd November

7.15 for 7.30pm

at St Mary's Church

£5 – Please bring your own drinks, glasses and nibbles. Tea and coffee available.

Teams should consist of up to 6 adults. Children are welcome.

For more information please contact:-

Julie Benson, 72 High Street, Clophill - 01525 860497

by 16th Nov. at the latest



News from Clophill Heritage Trust

The start of the new school year means new Duke of Edinburgh volunteers. We have a large group of students working towards Bronze, Silver & Gold Awards, from various schools, completing the volunteering requirement of their awards at The Eco Lodges. They help with a range of tasks from plant maintenance and upkeep, furniture upcycling, painting and event support. If you, or someone you know, is looking for somewhere to complete their volunteering please do get in touch with us.

October signifies Halloween and that means our **4th Annual Pumpkin Festival!** Taking place on **Saturday 26th October from 12noon to 4pm**, we will have all the usual favourites (tumbling teddies, BBQ, Bar Cake stand and live music), plus new activities and some scary creepy crawlies! Our pumpkins come from a local farm and are hollowed out ready for carving (so you don't have to do the slimy bit!). Remember to book your pumpkins online (we cannot guarantee any will be available on the day). www.clophillecolodges.co.uk/events



As always, if you would like to book any events, volunteer with us or get in touch please contact Louise or Emily on 07935 911207 or info@ClophillEcoLodges.co.uk

**For info call 07935 911207 or email info@clophillecolodges.co.uk
[www.Facebook.com/ClophillEcoLodges](https://www.facebook.com/ClophillEcoLodges)**

CLOPHILL METHODIST CHURCH

COFFEE & CROISSANT MORNINGS



ALL PROCEEDS IN AID OF CLOPHILL METHODIST CHURCH

10AM TO 12 NOON

£1:50

SATURDAY 5th October

SATURDAY 9th November



St Mary's Church. Clophill

Please join us for the

Harvest Festival



Sunday 6th October

10.45am

Led by Martin Randall and the Lay Leaders of Worship

Everyone very welcome

Donations of produce will be given to local Food Banks

Collection – the Bishop's Charity - Light Up Tanzania



Come into the Garden

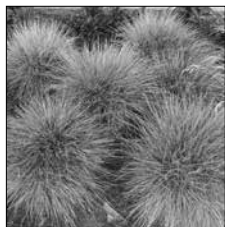
with *Kate Gardner*



As we move into October, days have become shorter and there is a coolness in the air but, that said, our gardens can still give us a wonderful and colourful finale before winter descends. It's a beautiful time of year, with the trees changing colour. Sometimes it may seem pointless raking, when the wind blows even more leaves onto the lawn, but just think of all the lovely leaf mould you can make! It's also time to start preparing for early frosts.

Cutting back herbaceous perennials during autumn restores order and tidiness to the garden. However, this removes potential winter interest, in the form of height and structure, plus food and habitat sources for wildlife so many gardeners delay the cut back until spring. Selective cutting back in autumn can retain the dried, bleached flowerheads of plants, while removing material showing signs of decay or fungal growth. More tender plants with woody stems, such as **penstemons**, are left so that the old stems protect the crown from frost. Leave pruning of these and other borderline hardy perennials until the risk of frost has passed – usually April or May.

Festuca Grass



If you have been watching *Gardeners World* recently you will know that Monty Don has a real love of using various grasses in the garden and not just for a lawn. Ornamental grasses can be used to great effect, from providing a calming presence to more exuberant flowering plants to being the only focus of the design. There are grasses for damp or dry soil, shady as well as sunny situations. Many are ideal for gravel gardens, prairie planting, wildlife gardens and are great to add to the cutting garden; others perform well in containers. Grasses from cool

climates such as **Deschampsia**, **Festuca**, **Helictotrichon** and **Stipa** come into growth in late winter and flower before mid-summer and so should be planted in autumn for the best establishment as the soil is still damp and warm, encouraging lots of strong new roots.

Grasses are good plants for containers too. Use loam-based compost such as John Innes No 2 with 20 percent loam-free compost to lighten the mix. Evergreen grasses such as **Carex** combine well with winter bedding such as **pansies** and **Christmas roses**, to give height and a contrast in texture.

Growing plants in containers is a great way to bring life and colour into otherwise dull spots in your garden as we go into the autumn and winter months. Almost any type of plant can be grown in a container. Generally, the bigger the pot and the plant, the easier it is to care for. Watering is one of the most important jobs when growing plants in containers. Not enough water will cause plants to dry out, and maybe die. On the other hand, overwatering is very damaging as most plants do not like sitting in water.

I love planning winter containers as those evergreen plants with fantastic leaf shapes and colours can take centre stage. My favourite herbaceous plants **Heuchera**, are an excellent choice for their evergreen or semi-evergreen foliage in green or rich plum shades. Evergreen shrubs make a good focal point in a large container, or can be mixed with other dwarf shrubs for a variety of foliage and flowers. Try **bay (Laurus nobilis)**, **skimmia**, **euonymus**, and **ivy (Hedera)**. Ornamental cabbage and kale provide additional foliage interest while adding hardy evergreen ferns such as **hart's tongue fern (Asplenium scolopendrium)**, or the **soft shield fern (Polystichum setiferum)** works in containers for shady positions. Winter bedding plants like cyclamen, winter-flowering pansy, viola, primula and polyanthus will flower intermittently during mild spells in winter and give a welcome pop of colour. **Happy Gardening**

St Mary's Church, Clophill

HARVEST *Lunch*

9th October 2019

12 noon – 2pm in the Church

£6 - 2 course meal



Everyone very welcome

Please reserve a place

— phone Carolyn 01462 815433 or Gillian 01525 860539

Clophill & District Flower Club

An enjoyable evening with stunning flowers – this was Clophill and District Flower Club's September 2019 meeting. Lisa Osborne, a local florist, with the title **'Fabulous Fusions'** delighted all attending with her vibrant displays of flowers.



We saw a traditional design with a contemporary twist – hot pink roses, orange mini gerbera with bright purple wool covered hoops accentuating the flowers. A wicker basket containing yellow dahlias, gloriosa orchids and predominating sun flowers. A mosaic design followed with plaited grass and groupings of sun flowers, orange mini gerbera and purple statice. Next, a design named Night and Day containing white gerbera, mauve/white gladioli and black grasses.

Lisa's final design was pink oriental lilies outlined with yellow gladioli. Each design was complemented with foliage to create contrast and balance and varied from aspidistra, fatsia, laurel, palm and heuchera leaves.



During the evening, Lisa told us about her working day as a florist – wedding, funeral, bouquet requests and the bespoke work where she has created clowns and greyhounds in flowers and foliage. Lisa buys her flowers from local growers as far as possible and on-line buying is now becoming more popular, in addition to the huge lorries we regularly see delivering flowers from Holland.



CLOPHILL VILLAGE HALL EVENTS

The Original and first ABBA Duo performing all of ABBA's
greatest hits in one spectacular night of music!



Saturday 16th November
7:30pm - 'Til Late

£10 Adv • £12 OTD
Fully Licensed Bar • Large Dance Floor

RACE NIGHT



Saturday 12th October
7:30pm Start
£5 Entry

Bring Your Own
Drinks & Nibbles

Tickets & Info
Call Steve on 07831255807
or email [steve.langhorn@
gmail.com](mailto:steve.langhorn@gmail.com)

Clophill Village Hall,
Bedfordshire, MK45 4DA

Ample free parking available
onsite

39th Shefford Craft and Produce Show

The show was held at the end of August and the committee would like to thank all who helped to make it such a success, including those who entered or visited during the afternoon, as well as those who supported us at the show and throughout the year.

There were **over 400 entries** and it was lovely to see some new faces amongst those taking part. Despite heavy rain the day before the show, there was a good display of garden flowers among the excellent array of entries from children and adults, demonstrating many skills.

This year our special class for adults was a knitted or crocheted blanket for a premature baby. These were **donated to Bedford Hospital** and it was our pleasure to deliver 56 blankets with which they were delighted. The committee and the hospital would like to thank all who were kind enough to make them.



Thank You from Cora

I would like to thank everyone who attended my **Garden Party on 25th August**.

The day was a beautiful sunny day, and **£405 pounds** was raised for **Multiple Sclerosis**, which is a disease affecting the nervous system, the brain and spinal cord. Unfortunately at the moment there is no cure for this disease, and at any one time more than 100,000 people are suffering.

At my garden party we had food and drinks, and guests enjoyed the flautist Jackie Williams, who played tunes from well-known shows; it was a really lovely afternoon and evening.

During the past year I have **raised £2,340** for this worthy cause by having bric-a-brac sales, donations and raffles.

Once again I would like to thank all my friends who helped me by making sandwiches, cakes etc., and to Jackie Williams; who all made the day a great success.

Cora Sheppard

**A COMMUNITY TRANSPORT OFFERING FOR THE AREA. ALL
VEHICLES ACCESSIBLE FOR THOSE WITH REDUCED MOBILITY**

Connecting our Communities in



3 simple steps to flexible travel!

Join the scheme • Book your journey • Travel!

**Amphill, Biggleswade, Cranfield, Flitwick, Harlington,
Marston, Potton, Sandy, Silsoe, Stotfold, into Bedford & all
points in between**

For more information:

call **01234 834933**

or email **communitytransport@bedsrcc.org.uk**

**Central
Bedfordshire**



St Mary's Church News



Our Rector, Rev. Dean Henley, held his last regular service in Clophill on Sunday September 8th. However he later celebrated the funeral of Rhona Dunn, a long time parishioner, on the 17th. After his final service in the Benefice on the 29th he now has leave of absence until November 9th. We will then be officially in vacancy, which may last for several months.

To reassure you, all the normal services will continue to be held. If, for any reason, this is impossible it will be announced on the church notice board. If you wish to arrange a baptism, wedding or funeral, please contact our Churchwarden, Mrs Rosemary Ilett on 860 274.

Advance notice. **Remembrance Sunday is on November 10th.**

High Speed Archaeology

Monday 7th October

Archaeology along the Eurostar route to the Channel Tunnel Rail Link (HS1).
Rescue Archaeology under pressure. The finds and what they tell us.

Speaker: Lester Hillman

From Erik the Bald to Nigel de Albini: the Domesday Book in Bedfordshire

Monday 4th November

This remarkable document gives a snapshot of the changes imposed on the people at the time and sets the scene for land transformations still in place today.

Speaker: Brian Kerr

An Edwardian Menagerie in Ampthill

Monday 2nd December

From ostriches pulling carts to stray sloth bears having their chins tickled in the local pub, Ampthill has seen it all. This talk covers the history of the menagerie and its ultimate fate.

Speaker: Janice Tuckett

Visitors are very welcome!

Lecture Theatre, Flitwick Library MK45 1QJ

7.30 for 7.45pm. £2 for members and £3 for visitors, payable on the door.

Further details: clive.makin@ntlworld.com Tel: 01582 655785

www.adalhs.org.uk

Ampthill & District Archaeological & Local History Society



CLOPHILL VILLAGE HALL



20% off for Clophill Residents*

The perfect place for the ultimate gathering!

Clophill Village Hall is set in stunning surroundings on the outskirts of the beautiful village of Clophill.

The Hall is an ideal location for social occasions including weddings, christenings, birthday parties etc or business events accommodating up to 212 people for meetings and dances and 117 seated for dining

- Fully fitted kitchen
- Fully serviced bar
- Separate meeting room
- Disabled toilet with baby changing
- Paved outdoor patio area
- Outdoor children's playground
- Large outdoor space
- Ample free parking



We have a choice of long or round tables plus chairs free of charge. In addition, we can supply tablecloths, plates, cutlery at a nominal cost to hirers.

Call 07821 643936 or email clophill.villagehall@gmail.com for more details. *Subject to availability and hire conditions

St Mary's School News



We are now back into the full swing of school life after a lovely long summer break. We have enjoyed welcoming all our new children into Acorn Nursery, Reception Class and within other classes in the school and hope their experience so far has been very positive.

We have also welcomed three University of Bedfordshire students into our school. They will be completing their training with us for the Autumn term and we're excited to be supporting the next generation of teacher.

Oak Class (our Year 4 children) began their swimming sessions at Hilltop Swimming Club during September. We also held a Jeans4Genes day. During the term the children will be participating in a Science day at school and also we will also be visited by an external gym coach.

School Play Performance for our Over 65's in the Village, Tues December 3rd @ 2pm

You will receive an invitation nearer the time, but please feel welcome to call or email us beforehand to let us know if you would like to attend. This is also the performance that our parents who have children in the school in the play, but would like to bring their pre-school child, will be invited to. Mrs Topliff is our Office Manager and can be contacted on generaladmin@clophillstmarysschool.co.uk or **01525 860206**.

Our value for October is *Trust (and Loyalty)*

The value for October is Trust (and Loyalty); a belief in the honesty, reliability and strength of another, relying on someone or something without question or evidence. In school, we will be thinking about what it means to trust someone and how it feels to be trusted. We need to be reliable and honest for people to be able to trust us.

Important information for parents with children moving to Middle School or requiring a Reception class place September 2020

Applications online: www.centralbedfordshire.gov.uk/admissions
Online applications preferred but hard copy applications are available from the school office.

Deadline for both Middle School Place/Starting School Place is 15th January 2020

We urge parents to make their applications ASAP and let the school office know if you have any questions or problems relating to your application.

Acorn Nursery News

We've had a busy start to the new school year welcoming everyone back and getting to know our new children and their families. It's been lovely to see them all settle into our routine easily. Our learning theme for this term is '**All about me**' and our value is **Friendship**. We have been looking at the Rainbow Fish Story as our example when looking at how to be a good friend and which behaviours you might display.

What's on in and around Clophill

OCTOBER		Saturday 5th Coffee and Croissant morning Clophill Methodist Church, 10am to 12noon
		Sunday 6th Harvest Festival Service St Mary's Church, 10:45am
		Wednesday 9th Harvest Lunch St Mary's Church, 12noon to 2pm. <i>See poster in this issue</i>
		Saturday 12th Beetle Drive Clophill Methodist Church, 6:30pm. <i>See poster in this issue</i>
		Saturday 12th Race Night Clophill Village Hall, 7:30pm. <i>See poster in this issue</i>

NOVEMBER		Saturday 9th Coffee and Croissant morning Clophill Methodist Church, 10am to 12noon
		Sunday 10th Remembrance Sunday St Mary's Church
		Saturday 16th Abba Girls Clophill Village Hall, 7:30pm. <i>See poster in this issue</i>
		Saturday 23rd Quiz Night St Mary's Church, 7:15pm for 7:30pm. <i>See poster in this issue</i>

On throughout the month...

Wednesdays...

- **Tea and Chat** 10.30 to noon, Methodist Church

Thursdays...

- **Thursday Leisure Club** 2pm, St Mary's Church

Fridays...

- **Clophill Toddler Group** 10am-11.30am, Village Hall, See 'Village Groups' for contact details

One Saturday a month...

- **Messy Church** 4pm-6pm, Clophill Methodist Church. Dates: Nov 16; Dec 14. See 'Village Groups' for contact details.

CHURCH SERVICES

Regular services at St Mary's Church, Clophill

1st Sunday	8am, Holy Communion; 10.45am, Family Praise
2nd & 4th Sundays	10.45am, Parish Communion
3rd Sunday	10.45am, Morning Prayer/Praise
5th Sunday	10am, Benefice Services

Regular services at Clophill Methodist Church

1st, 2nd, 4th, 5th Sundays	10.30am Morning Service
3rd Sunday	10.30am All Age Worship Service

If you have any diary dates that you would like included on this page, please email clophillspotlight1@hotmail.co.uk

Parish Registers for October

1819

No registers recorded

1869

Baptisms

- Oct 10 Elizabeth Mary Summerfield
George Millard
John Izzard, Mary Anne Izzard
Albert William Albery (mother a single woman)
Ada Bushby (mother a single woman)
Ann Page
Sarah Jane Two (?) of Shefford
- Oct 17 Edwin Roberts
Nellie Rebecca Chapman of Harlington (father a Station Master)
- Oct 31 Elizabeth Denton
Frederick Bowler
Minnie Goss (father a shopkeeper)

Marriages

- Oct 23 Henry Wheeler to
Susan Ann Lammas

Burials

- Oct 1 Thomas Payne 49
Oct 22 Nellie Isitt Quenby (infant)
Oct 29 Edward Maddams 59

1919

Baptisms

- Oct 26 Leonard Sidney Bushby
(father a Roadman)
Oct 29 Florence Lilian Platt
(father a mechanic)

Marriages

- Oct 14 David Leopold Webb 22,
of Ormskirk to Edith Hare, 27

1969

Baptisms

- Oct 19 Lesley Ann Clark

Burials

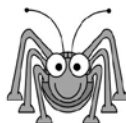
- Oct 10 Arthur Izzard, 85
Oct 20 Clara Elizabeth Harrison, 72
Oct 31 Jack Sheppard, 56

ST MARY'S CHURCH REGISTERS FOR SEPTEMBER 2019

Funeral and Burial

- Sept 17 Florence RHONA Joan Dunn, 95

CLOPHILL METHODIST CHURCH



BEETLE DRIVE

Saturday 12th October, 6.30pm

Adults £5, children £2.50

Refreshments

In aid of Clophill Methodist Church

Tel: 01525 860695



These notes are a resume only. Official minutes are available on the internet and notice boards. All official correspondence should be sent to the parish clerk and not individual councillors.

PARISH COUNCIL NOTES FOR JULY

Our Parish Council met and discussed items very relevant to the village. Before the meeting began, members of the public were invited to ask questions.

- i. Representatives of the Laporte Fishing Club were concerned that they had been given notice to quit and asked the Council if they would approach the developer and Greensand Trust to ask if they could continue to use the area for fishing.
- ii. It was noted that some footpaths have become overgrown and were advised that CBC, who have responsibility for this, have an on-line Report-it tool.
- iii. A concern was raised about the safety of cars entering the High Street on the planning application at 68 and 68a High Street, noting that the road narrows here and a dangerous pinch point would be created.

Matters for consideration:

- 1. Lakes Development** Cllr Walford gave an update and suggested that Jon Balam of GST should attend a Parish Council meeting to give an update.
- 2. Broadband issues** No easy solution. Ward Cllr Blair has made representations.
- 3. Parking on the Green** Signs to be installed, "No parking on the grass".
- 4. Area close to the Flying Horse** No feedback yet. Rec ground – Rubbish, no solution at present. Repairs to the gate – clerk authorised to initiate repairs if required.
- 5. Old St. Mary's Church and Eco Lodges** Restricted Access signage - Approved.
- 6. Grant Application from St. Mary's Church** The Local Government Act 1894, only recently brought to the notice of the Clerk, prohibits Parish Councils from any involvement in funding of any religious organisations, which includes maintenance or improvement of buildings or land or contributing to costs. So regrettably, the Council could not contribute to the application.
- 7. Ampthill, Clophill and Maulden Community Safety Group** Requested a representative from the Council. Cllr Austin offered to attend.
- 8. Further discussions** Covered the big Beds Clean Up; Holly Bush and Hay Close improvements and VE Day 8th – 10th May 2020.

PARISH COUNCIL NOTES FOR SEPTEMBER

There were no questions from the public. The Chairman noted that Roger Catton had given up litter picking around the village – a job which he had done so conscientiously for many years. It was hoped that a replacement could be found. Ward Cllr Paul Duckett gave a resumé of relevant topics covered in CBC meetings. The Clerk reported on the Bus Shelter damage; the field gate to the recreation ground; expected contract for Hay Close and the arrangements being made to mark out the allotments behind the Village Hall with ropes and posts.

Matters for consideration (available from the agenda on the PC website):

- 1. The Lakes Development** It was hoped that by the end of the year the s.106 contract

would be in place and The Greensand Trust would be in ownership of the area, so that it would be open to the public in 2021.

2. The development of Paradise Farm was discussed, as was the request to build 2 garages in front of the houses on the land opposite The Green Man.

3. Grants were awarded to the Village Hall and MAGPAS.

4. The clerk had discussions with CBC Highways Dept. outside the school.

The outcome was a suggestion that double yellow lines in specific areas might help with traffic management, which will be consulted upon by CBC.

5. The works requested by the PC to CBC for **bollards and lining works at The Green** are just waiting for the last five bollards to be installed.

6. The clerk confirmed that **Church Path is classified as a footpath**. Also advised the current website will need to be replaced by April 2020.

7. Cllr Carpenter commented on the progress of the arboreal assessment, checking on trees which might be under stress, especially still suffering from the drought of last year.

8. The defacement of the play shelter was deplored and arrangements are to be made to either clean it off or paint it over.

These are just brief notes on the meeting – you can always come along and hear the discussions in full. It makes a very interesting evening – with dedicated folk who give up their time on our behalf and with Clophill at the centre. *Julie Benson*

Planning

CB/19/02457/FULL

Location: 2 The Granary, Brickwall Farm, Kiln Lane

Proposal: Garage conversion into kitchen\Dining\Living Area, toilet and staircase connecting an existing first floor bedroom and erection of outbuilding/garage. Considerations for Objection include: Listed building consent required; outside Village Envelope; further information required about original conditions of barn conversion.

OBJECT

CB/19/02267/VOC

Location: Hard Earnt, Kiln Lane

Description: Variation of condition number 2 of application CB/19/00422/FULL (Replacement dwelling & installation of solar panels to rear garden).

SUPPORT

CB/19/02687/FULL

Location: Land to the rear of the Green Man Pub, The Green

Proposal: Erection of two single garages and fence with gated access to existing dwellings. Considerations for Objection include: Garages are below the size required from the CBC design guide (section 5), no turning space detailed, no certainty enough spaces to allow all the cars to park; no detail on cycle store or bin locations.

OBJECT

Clophill Parish Council

Continued

CB/19/02188/FULL

Location: 11 Tanqueray Avenue, Clophill, Bedford

Proposal: Two storey rear extension and first floor side extension. Considerations for Objection include: No indication of location of car parking spaces from the 2 extra rooms; no certainty that there are enough spaces to allow all the cars to park; one bedroom window would seem to overlook a neighbours garden.

OBJECT

CB/19/01479/FULL

Location: Mouse Farm, Shefford Road

Proposal: Demolition of existing barn and erection of a new 2-storey dwelling house. Considerations for Objection include: Attempt to gain height, mass and space of this dwelling will be out of character for the area; owner does not have full rights to the land shown; development will have demonstrable impact on the views from Public Rights of Way; development will impact Greensand Country Landscape Partnership (GCLP) landscape's very distinctive character and views; no detail on flood mitigation.

OBJECT

The next Parish Council meeting will take place at the Village Hall
at 7.45pm on Tuesday 29 October



Bedfordshire
Cambridgeshire
Northamptonshire

Wildlife walks & talks



Tree Walk with Colin Carpenter

Saturday 2nd November: 10.00am-12.30pm
Maulden Woods

Late autumn or early winter, either way the woods are fascinating even at the end of the year. Colin's knowledge of our native trees and shrubs, and of Maulden Wood will be familiar to many. Come along, you will almost certainly learn something new. This event is open to all ages but terrain can be muddy and uneven and is unsuitable for wheelchairs or pushchairs. Please wear appropriate footwear. Children should be accompanied by an adult. **£2 per adult**

Open to all. Walks have group size limits so please book.

For bookings or additional information please email flitvale.info@gmail.com
or ring Ann on 075801 78889 between 6pm and 8pm or at weekends.

Useful numbers

Gas (Emergency)			0800 111999
Electricity (Emergency)			0800 7838838
Emergency Fire/Police/Ambulance			999
Water/Sewage (Anglian Water)			0845 7145145
Telephone	(Customer Services) 150	(Faults)	151
Highways Department (Central Bedfordshire Council)			0300 3008049
Benefits Agency (Bedford office)			01234 361500
Registrar's Office (Births/deaths/marriages)			0300 3008089
Rail (Enquiries)			0845 7484950
Buses 01234 262151	(Link A Ride) 01525 840511	(Flittabus)	01582 406561
Luton Airport			01582 405100
Swimming	(Flitwick) 01525 717744	(Robinson Pool)	01234 212479

LOCAL GOVERNMENT

Central Beds Offices (Chicksands)			0300 300 8000
Mid-Beds MP		Nadine Dorries	01462 811992
Central Bedfordshire Councillors		Michael Blair	01525 404513
		Paul Duckett	07988 184061
Clophill Parish Council	(Clerk)	James Stirling	01462 887226

HOSPITALS

Bedford (North & South)	01234 355122	Admissions	01234 261150
		Appointments	01234 359012
Luton & Dunstable			0845 1270127

DOCTOR'S CLINICS

Ampthill	(Houghton Close) 01525 300898	(Oliver Street)	01525 631395
		(Greensands)	01525 631390
Shefford	Enquiries 01462 818620	Appointments	01462 810034
Barton 01582 528700		Flitwick	01525 715300

POLICE

County Police HQ	Non Emergency	101
Ampthill Station		01234 841212
		101

CHURCHES

St Mary's Parish Church	Revd Dean Henley	01234 381235
(Church Warden) Rosemary Ilett	mandrilett@ontel.com	01525 860274
St Francis RC Church, Shefford	Ian Gordon	01525 860875
Clophill Methodist Church	Jim Davies	01525 860829
Baptist Churches (Ampthill) Doreen Gibbs 01525 862424	(Maulden) Ian Crawford	01525 634325
	(Shefford) Hazel Arnold	01462 812564

SCHOOLS

Clophill St Mary's C of E Lower School & Nursery (Headteacher Mrs K Bingley)	01525 860206
Harlington Upper School , Harlington	01525 755100
Preschool clophillpreschool@gmail.com (Chris) 07936 006381 or (Imogen)	07765 887868
Redborne Upper School , Ampthill	01525 404462
Robert Bloomfield Middle School , Shefford	01462 628800

Village groups

Beverley Court	860920
Brownies	https://enquiryym.girlguiding.org.uk
Clophill Community Care	Duty Contact 07791 773705
Clophill Heritage Trust	Ali Bradbury 07894 710001
Clophill St Mary's C of E Lower School & Nursery	Emma Topliff 860206
Clophill Toddler Group	Hannah Compton 07535 705711
Clophill United Charities	Richard Pearson 861110
Conservation Group	Brian Adams 862297
Flower Club	Gillian Hill 860539
Friends of the Cheshire Home	Sue Pearson 861110
Funzone After School Club	07903 167493
Greensands Community Choir	Luke Howard 07975 520085
Indoor Carpet Bowls	Tony Meredith 860754
Messy Church	Victoria Higgins 07920 568861
	victoriajhiggins@hotmail.co.uk
St Mary's PTA	Julia Skelton 07774 993973
Scouts and Cubs	www.scouts.org.uk/get-involved
Tea and Chat	Anita Errick 860695
Village Hall Booking Secretary	Marilyn Browning 07821 643936

DAVID JAMES

WWW.DAVIDJAMESKITCHENS.CO.UK



NEW
KITCHEN & LIGHTING
SHOWROOM

5 MINUTES
FROM CLOPHILL

DESIGN
MANUFACTURE
INSTALL

Pulloxhill
Business Park
Greenfield Rd
Bedford
MK45 5EU






SAVE £££
BUY DIRECT

Call 01525 722230

5. *Expose the ancient footings at the Old Church and interpret them.*

Name:	Your Road/Area:	Signature:

6. *Develop a Monastic Cycle Trail across the Greensand Country area.*

Name:	Your Road/Area:	Signature:

7. *Other ideas.*

Name:	Your Road/Area:	Your idea:	Signature:

2. Support owners of publicly visible Greensand Stone walls in the village to help them gain funding to have them repaired/restored.		
Name:	Your Road/Area:	Signature:
3. More information boards & signs at the Old Church for visitors.		
Name:	Your Road/Area:	Signature:
4. Fix the damaged stone around the tower entrance at the Old Church		
Name:	Your Road/Area:	Signature:

If you are happy for us to contact you about your idea, please put your contact details below:

GCC
Greensand Community Choir
LOVE SINGING!
sing with an exciting local choir...



Come along to your local **community choir**,
for men and women of all singing abilities!
Mondays, 8.00-9.30 pm at St. Mary's Church, Clophill.

- Come and sing with an exciting new local choir led by a professional musical director
- Uplifting music in a variety of styles: musicals, classic pop, folksongs, sacred and world music
- Welcoming singers of all abilities - no audition, no need to read music!
- New members - come along any time for a free taster



Enquiries to:

greensandcommunitychoir@gmail.com

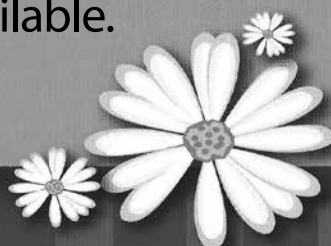
or ring Luke on: 07975 520085

Daisy Cooper

Spring cleans, one off cleans and
moving home cleans all available.

Daisycooper22@hotmail.co.uk

Please call 07913 332914



Keeping your home as fresh as a Daisy

Hypnotherapy...*the Mindful Way*

For help with: anxiety, stress, IBS, migraine mindful eating,
insomnia & many other conditions. For more information or
an initial consultation please contact Ann. Tel: 07791171980

Email: enquiries@pathwaysofmindfulness.co.uk
www.pathwaysofmindfulness.com



Painter and Decorator

Call Chris : 07950714579



*do you want your
home brightening up?*

all interior & exterior work

no job too small!

free no obligation quote

*25 years experience
& fully insured*

*facebook: @christopherthepainter
email: chris.minihane@btinternet.com*

JK Garden and Landscape Services Ltd



We offer...

full landscaping service

patios

fencing

decking

new lawns

driveways

all garden maintenance

Contact us on **0791 2028254**
or at **jkgardening@hotmail.co.uk**

You can also find us on Facebook

TALKEASY Coaching

*Do you want to make a fundamental
difference to your life and don't
know where to start?*

My name is Lynn and I am a Life Coach.

I have extensive experience helping
with every aspect of life, e.g. support with
family issues, or your own financial,
emotional, or physical wellbeing.

My most recent project has been supporting
young teenagers in their place of education.

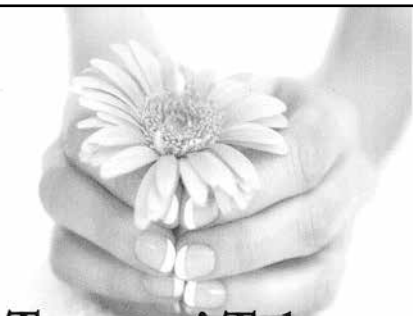
Be the change in your life
and contact me for a free,
no obligation chat.



07557948644

01525860384

lynncllements87@gmail.com



Tammys' Talons

Nail Technician

Gel. Manicure and Pedicure

IZABEL HAMMON
REGISTERED NAIL TECHNICIAN
CALGEL **IZ** by **Chapman**

Tammy Kirby

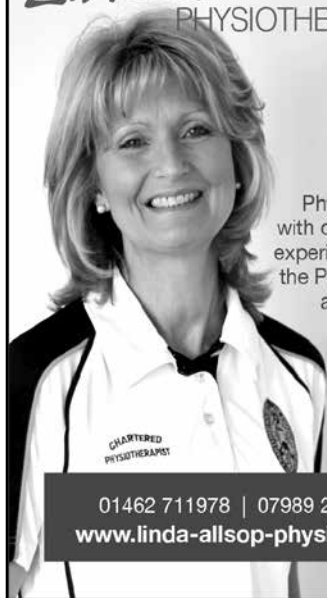
Clophill, Bedfordshire, MK45 4AW

Tel : 07968379309

tammystalons@gmail.com

Linda Allsop

PHYSIOTHERAPY



Chartered
Physiotherapist
with over 30 years
experience in both
the Private Sector
and the NHS.

01462 711978 | 07989 257026
www.linda-allsop-physio.co.uk

USING PARABEN & SULPHATE FREE, 100% VEGAN,
CRUELTY FREE PRODUCTS



A Cut Above Hairdressing

by Rachel

In the comfort of your own home
cutting & styling specialist

call or text : 07896009382
facebook: acutaboverachel

Salon experienced
Fully insured
Fully qualified to Level 3 Standard.

PERSONAL DOG WALKER

£10 per hour
£7 per half hour
£6 per visit

- First Aid Certified
- Insured



Text or call Corrane on
07576 473373 or 01525 630740

 Corrane's personal dog walking



Professional friendly accountancy services

Fully qualified,
Free initial consultation,
competitive fees
Sole traders, Ltd companies,
bookkeeping, payroll,
CIS, VAT & Tax.

sally@sjtax.co.uk
01234 831997
07899 808592



ROUTE 66 Barbers

- Easy parking
- Minimum wait
- Complementary refreshments

CHILDREN'S CUTS!

OPENING TIMES:

Monday	closed
Tuesday, Wednesday	9.30-4pm
Thursday Winter	9.30-7pm
Thursday Summer	8pm
Friday	9.30-6pm
Saturday	8.30-4pm
Sunday	Closed

07813 145112

22 High Street, Silsoe, Bedfordshire MK45 4 EP




Telephone **01525 860526**

The Stone Jug

A Free House
BACK STREET, CLOPHILL

Despite many protestations from 'the Matriarch', Joyce is still very much at the helm (or so we tell her!). Vikki has been demoted (but she's still here, don't you know!) and Mark has moved into pole position and is doing exceptionally well. We're still very much a family-run village pub with our late dad's saying still ringing true – 'We're a proper pub for proper people'. Cheers!

- 5 real ales, including 2 guest pumps that change frequently (see our Facebook page for details)
- selection of wines and Prosecco by the glass – or even better, by the bottle
- home-cooked lunches Tues-Sat, 12pm-2pm



REMEMBER OUR MOTTO
"A VISIT TO THE JUG IS BETTER THAN GOING TO A PUB"
CHEERS JOYCE, VIKKI & MARK

www.stonejug.co.uk www.facebook.com/thestonejugclophill



DOULA root

MOTHERING THE MOTHER THROUGH

pregnancy, childbirth & beyond

I offer bespoke practical and emotional support to mothers and families perinatally. Find out how I can protect your birth space and support your journey on your terms.

CONTACT YOUR LOCAL DOULA ROSIE: 07543 280171 WWW.ROSIECARTERSUSO.COM

OVENCLEAN.

The original oven cleaning specialists

All types cleaned:



- Ovens
- Grills
- Ranges
- Hobs
- AGAs
- Microwaves
- BBQs
- Extractors

Fully insured, and DBS Police Checked

For a quote call Clive direct on:
07949 233089 or phone the
Office on **0800 840 7127**



www.ovenclean.com



Ovenclean Clive Burgess

Warm Property Services



Heating



Plumbing



Bathrooms



Maulden based. British Gas trained engineer with more than 10 years' experience. Discount for over 60's.

Free no obligation quote & advice.



Boiler and heating installations



Power flushing



Landlord Safety certificates



Bathroom suites



Plumbing and drainage



Fires and cookers

07716 478794 01525 839342
www.warmprops.co.uk

THE BLUECAT



LUXURY CATTERY

Tel: 01525 861416
www.thebluecat.net

Find us on Facebook @thebluecattery
or email us at enquiries@thebluecat.net

The Bluecat is a luxury cattery set in the quiet area of Jacques Lane in Clapham. With just 14 cat chalets, we have time to fuss, pamper and play with your cat to its heart's content whilst in our care. Please call for further information.

Misty Double Glazing?

Over 30
Years
experience.
FREE
Quotes

Over 30
Years
experience.
FREE
Quotes

**KEEP YOUR WINDOW FRAMES...
... WE JUST REPLACE THE GLASS!**

• UPVC • Aluminium • Or Wood

Because we replace just the glass the repair is a
Fraction of the cost of a complete replacement window.

BEFORE



AFTER



mistydoublinglazing.co.uk
QUALITY GLAZING SERVICES

01525 876808

WE ALSO REPLACE BROKEN...

• Glass • Handles • Hinges & Locks
AND REPAIR...Patio Doors & Conservatories!

Nicola Rayner Fitness

Feel great in 2019!

BOXWORX

Fun, effective pad work based boxing class for a great stress relieving total body workout!

Wednesday 8-9pm

Clophill village hall

Limited spaces available booking essential

Pilates & Men's Core Strength

Improved core strength and posture through low impact stretching and spine safe conditioning exercises. Delivered with a positive, caring approach in a fun and friendly environment to leave you feeling energized!

Classes in Flitton & Silsoe

Limited spaces available booking essential

Classes also in the surrounding area

Legs, Bums & tums

Zumba

Ladies Boot Camp

For full timetable or to book contact Nicola
fitone@live.co.uk 07801 510988

E.T. Accountancy Services

Experienced Chartered Accountant and Chartered Tax adviser based in Clophill providing a full range of accountancy and taxation services to businesses and private individuals.

To arrange a free initial consultation please telephone me on 01525 590465 or email emma@et-accountancy.co.uk

*Chartered Accountant and
Chartered Tax Adviser*

Emma Thoulass FCA CTA
www.et-accountancy.co.uk
01525 590465

Take out an annual ad in Spotlight

Black & White per year

One-sixth	£53	H31 x W126mm
One-quarter	£69	H92 x W61mm
One-third	£80	H61 x W126mm
Half page	£112	H92 x W126mm

Please email our Advertising Manager
at ads@clohillspotlight.co.uk



be hot!

with
Slimming World

TUESDAY

Silsoe

Silsoe Community Sports Centre
Chestnut Avenue, MK45 4GP
5:30pm & 7:30pm

Tel / Text: Liz for details
07973 532793

slimmingworld.co.uk

0344 897 8000   



Welcome to Clophill St Mary's C of E Lower School and Nursery

A small, friendly, Voluntary Aided Church of England Lower School, graded 'Outstanding' by Ofsted, with close links to the local community.

St. Mary's is a Values based school taking children aged from 2 years 7 months to 9 years and providing them with a framework for living, tightly woven into the positive Christian ethos of the school.

Breakfast and after school care for all ages.

Acorn Nursery

for preschool children aged 2 years 7 months to 4 years with breakfast and after school care available.

Providing 30 hours free childcare entitlement.



To arrange a visit, please call us 01525 860206
or email: generaladmin@nursery@clophillstmarysschool.co.uk
For more information visit: www.clophillstmarysschool.co.uk



GLORIES OF UZBEKISTAN

21 - 30 SEPTEMBER 2020

A 10 day small escorted group tour

ITINERARY HIGHLIGHTS

Tashkent - Urgench - Khiva - Train to Bikhara -
Bukhara - Gijduvan - Samarkand

COST INCLUDES:

- International flights (Economy Class)
- Internal flights from Tashkent to Urgench Accommodation
- Services of our English-speaking representative for airport transfers
- All transfers and sightseeing by a chauffeur driven private air-conditioned vehicle
- Services of English speaking guide
- Train journey in economy class
- Entrance fees to all monuments as specified in itinerary
- Escorted by Select Travel Holidays (subject to numbers)

From **£2,799** pp




INDUS
experiences

T&C: Prices are per person and subject to availability at the time of booking, based on 2 people sharing. Visa is available on arrival free of charge for British passport holders. Camera fees at monuments and other places of interest are payable locally. Full terms and conditions apply. This exclusive group departure will operate subject to numbers.

01234 326778

24 Mill Street, Bedford MK40 3HD

sales@cruiseselect.co.uk

www.selecttravelholidays.co.uk

www.cruiseselect.co.uk



BOOK WITH CONFIDENCE
ABTA & ATOL protected



ARCHITECTURAL DRAWINGS AND BUILDING DESIGN SERVICES

Professional Architectural design services provided for all types of private residential building projects including extensions, loft/garage conversions, garages and outbuildings through to new build dwellings with all necessary council approvals obtained.

For free estimates and advice contact Steve Coates on Flitwick 01525 862457 or 07960 215053.

stevecoates72@gmail.com

S & S Coates Surveying & Design, Unit 4 The Courtyard,
r/o 13 High St, Clophill, MK45 4AB.



CBuildE
chartered building engineer



A L & G ABBOTT

F u n e r a l D i r e c t o r s

~ Established 1832 ~

WITH YOU WHEN IT MATTERS MOST

An independent family business continuing to provide a caring & professional service to Bedford, Kempston & the surrounding villages.



- 24 Hour Personal Service
- Pre-Paid Funeral Plans
- Private Chapels of Rest
- Green Burials
- Home Arrangements
- Civil Services Available
- Bereavement Listening Service (Free to our families)



T 01234 843222

www.abbott-funerals.co.uk support@abbott-funerals.co.uk

150 BEDFORD ROAD, KEMPSTON, BEDFORDSHIRE, MK42 8BH

AIMS

Tim Kemp BA FCA
Top Barn Rectory Road
Steppingly MK45 5AT

TEL/FAX : 01525 717141
MOBILE : 07900 823 012
www.aims.co.uk
e-mail: timk@aims.co.uk

- ◆ **Professional** service providing for all your accounting and tax needs
- ◆ **Practical** advice based on 20 years experience in **running** businesses
- ◆ **Personal** approach with fixed fees relevant to the work **you** need
- ◆ **Friendly, local** accountant supporting the community for over 20 years

Please call for a free, no-obligation initial meeting

ACCOUNTANTS FOR *business*

Hills-Howson Financial Services

Financial adviser appointments available in your home or our office

The Old Post Office
53 High Street
Clophill
Beds MK45 4BE

Tel: 01525 861803
www.hills-howson.co.uk
hills.howson@btconnect.com

Including:-

Investments

Pensions

Protection

Annuities



W&H PEACOCK

AUCTIONEERS & VALUERS

Weekly Auctions

Visit the Bedford Auction Centre to enjoy the excitement of a live auction.

Antique & Modern Furniture • Clocks • Books
Ceramics & Glassware • Pictures & Prints
Bicycles • Jewellery & Watches • Collectables
Garage Tools & Equipment • Household Electrical Items
Office Furniture & Equipment • Retail Products & Stock
Vehicles • Horticultural & Commercial Equipment
Building Materials • Garden Furniture & Effects

Eastcotts Park, Wallis Way, Bedford MK42 0PE 01234 266 366 peacockauction.co.uk

THE COMPUTER MAN



Got a problem with your computer and don't know what to do? Suffering with a virus or spam?

Don't hesitate! Ring your local computer expert

**Remote repairs or home visits
(Day, evening & weekend)**

**Lap top/desk top loan
(Free pick up & drop off in local area)**

Comprehensive health check from £35 (**Special Offer** £35 - normally £40)
Refurbished fl at screen available from £15 • Refurbished base units available from £99



Contact Stephen Amos
07976 718567
the.computerman@ntlworld.com





rincontuition - Spanish & Maths

Expand your knowledge. Boost your confidence

Phone 01525 860743 - Mob 07952 667814

Exam techniques and preparation. Revision and practice papers: SATs, 11+ and GCSEs

Spanish for business or pleasure, all levels. GCSE & A-levels

Skills development: conversation, reading and writing

Maths: Boost your confidence and abilities

KS1, KS2, KS3, SATs, 11+ and GCSE practice papers.

References available. Reasonable rates

Enquiries: 01525 860743 - 07952 667814

rincontuition@yahoo.com



LIZZIE BROWN PET CARE & HORSE GROOM SERVICES



**DOG WALKING
PET POP-IN & FEEDING
PET/HOUSE SITTING
EQUINE GROOM***

(*BTEC Cert Equine Management)



Lizzie Brown 01525 862459 / 07500 989 700

Reliable friendly local service

Short notice available (no contract commitments)

Insured Quality references available CRB checked*

*(Disclosure & Barring Service)

Hairs & Graces

Unisex Salon



Wet Cut £19
Cut & Blow Dry £30
Colours start from £27
Special OAP rates

Opening Hours:

Monday	9.30-2.00
Tuesday	9.30-5.00
Wednesday	9.30-5.00
Thursday	9.30-8.00
Friday	9.30-8.00
Saturday	9.30-4.00

Zoe, Donna, Gemma
and Amanda look forward
to welcoming you.

Ring now to book an
appointment.
Appointments also
available with our Barber.

Burgoine Business Centre, 117 Clophill Road, Maulden MK45 2AE

01525 861491 • Loads of free parking



GARDEN DOCTOR

Rob McLeod

Pruning Specialist

Professional, Local, Experienced

- * All tree and hedge work undertaken
- * High standard of work
- * Waste material recycled for compost
- * Free Quotations
- * Local, reliable service you can trust

Tel: 07763 239340 or 01525 861568

email: rob@gardendoctor.org.uk

www.gardendoctor.org.uk

Call the Garden Doctor and bring Good Health to your Garden



Hedging & Pruning
Shrubs & Fruit Trees
Tree Surgery & Removal
Fully certificated and insured



We'll get you up and running!

We offer the very best physiotherapy care from a friendly approachable team of nine highly trained Chartered Physiotherapists all members of the Health Professionals Council

Expert treatment including:

Neck/Back/Hand and Tennis Elbow Pain
Headaches/Migraine/Sciatica
Incontinence/Pelvic/SIJ/SPD/Pregnancy Back Pain
Sprains/Strains/Torn Ligaments
Whiplash/RSI/Osteoporosis/Sports Injuries

Specialist Physiotherapists:

Neurological, Paediatric, Vertigo and Dizziness

We also offer complementary treatments:

Acupuncture, Reflexology, Massage, Indian Head Massage,
Chinese Herbalist, Lymphatic Drainage and Pumps



Tel: 01525 720882 www.chartered-physiotherapy.co.uk Email: amphillphysio@btconnect.com

7 Station Square, Flitwick, MK45 1DP



The Happy Place.co.uk

On the Green beside the Post Office every Friday, 3.30-7.30pm

We are your local mobile fish and chip van, we have been parked on the green every Friday for the past 6 years. We serve only the highest quality produce, cooked fresh to order and served to you by our friendly staff.

Why don't you pop down and come and Try Our Fry!

To avoid waiting in the cold, give us a call to

place your order on: 07833 786108

A big thank you to all our customers who have loyally supported us over the past couple of years.

Chapman & Kirby Heating

Gas, Plumbing & Heating Installations

Gas Safe Registered

Boiler Servicing & Maintenance



Call us now

Tel: 01525 861255 Mob: 07831 132308

Email: info@chapmanandkirbyheating.co.uk

1C, Old Silsoe Road, Clophill, Beds., MK45 4AR



NEVILLE FUNERALS

We take care of the details, so you can say
goodbye the way you want to.

NEVILLE. Because there is a difference.

AMPTHILL

The Old Church, Flitwick Road MK45 2NT

t: 01525 406132

e: ampthill@nevillefuneralservice.com

SHEFFORD

24 Clifton Road SG17 5AE

t: 01462 813258

e: shefford@nevillefuneralservice.com

www.nevillefuneralservice.com








If you've been thinking about enjoying a great lawn this year – green, lush and weed-free, why not contact us today and let us bring your lawn to life.

We provide four seasonal treatments, as well as beneficial treatments to keep your lawn in tip-top condition - prices start from just £5* per month.

PRICES FROM
£5*
PER MONTH

Ask us about our annual plans, which allows you to both spread the cost and save up to 25%.

GreenThumb
LAWN TREATMENT SERVICE

Simply call: 01234 709345 or
visit: greenthumb.co.uk   

*Based on a lawn size of 40m²

Baths, Toilets &
Showers
Sinks and Taps
Guttering
Leaks and Burst Pipes
Drainage
Handyman jobs also



Silsoe based
No call out fee – free estimates
Fully insured and guaranteed
No job too small
07720 723653 01525 864859
info@betaplumbing.co.uk
www.betaplumbing.co.uk

Washing Machines Dishwashers Dryers Electric Ovens Repairs Servicing Sales



A local family business offering
a quality service at a competitive price
Est. 1981

Tel: CLOPHILL 860148
or Tim Downing direct on 07969 545 276

A member of the White Goods Trade Association
Fully Insured

the
café

AT

W&H PEACOCK
AUCTIONEERS & VALUERS

Visit

www.peacockscfe.co.uk
for more details and to view
our current menu.

Eastcotts Park, Wallis Way,
Bedford, Bedfordshire
MK42 0PE

01234 266 366



**View the salerooms for our upcoming auctions
and then relax with a coffee and a slice of cake.**

Our unique café in Bedford Auction Centre with free wi-fi and
views of the salerooms, comfortably seats over 100 customers.

We serve cooked breakfasts, paninis and sandwiches, light
lunches and snacks plus a range of hot and cold drinks.

Senior Citizen discounts available

Open Monday to Thursday from 8.30am - 3.30pm
Extended opening on Friday to 7pm. Saturday 8.30am - 4pm
(Last orders 1 hour before closing)

LOCAL ALLOY WHEEL REFURBISHMENT


mintalloys
complete alloy wheel refurbishment

Tel:
01525
860069

Alloy Wheel Repairs

Diamond Cut Alloy Wheels Repaired On Site

Powder Coat Primers & Lacquers

Fast Turnaround Alloy Wheel Welding

Tyres At Competitive Prices

NEW for 2015 - 4 Wheel Alignment Service

www.mintalloys.co.uk

Root 'n Branch

Your Local Friendly & Reliable Gardener

All aspects of Garden Maintenance undertaken
• PRUNING • MOWING • WEEDING • PLANTING • HEDGING

Southfields, Shefford
email: whooley@hotmail.co.uk

Tel: 07771 537385

Public Liability
Insured

Conifer
Kennels

Quality
BOARDING
DAY BOARDING
HOLISTIC FOOD SHOP
GROOMING & GOING HOME BATHS
OFF SITE NATURE WALKS
QUALIFIED TEAM



nutriment
ENHANCED raw diet formula

www.coniferkennels.co.uk **01525 860339**



The Causeway, Clophill, Beds. MK45 4BA

Akela

WILD WASH

YAKERS

SKIPPERS

Eden
Holistic Pet Foods

GREEN & WILDS
Naturally for pets

Pre-Order
Service Available

STUART DREW ELECTRICAL SERVICES

MEMBER OF THE ECA
PART P CERTIFIED QUALIFIED TO 18TH EDITION

From extra lights & sockets, to re-wires. Fault finding and electrical safety certification. For a professional, courteous service with free estimates & all work guaranteed, please call me

29 Lincoln Way
Harlington
Beds
LU5 6NG

Fully qualified & insured
30 years experience

Telephone:
01525 875965
07941 812662



Compu-Doc

PC / laptop crisis ?

01525-402227

Call the Doc for -

Hardware & software

Diagnosis & treatment

john.stafford@compu-doc.co.uk

BURGLAR ALARMS

New Alarms Fitted or Upgrade Existing Alarms

BURGLAR ALARMS

We fit New Alarms - Wired or Wireless Systems
We can service and maintain your existing alarm

CCTV

We fit high quality systems to maximise your security.
Access your CCTV via the internet or mobile.

DOOR ENTRY

We fit a range of quality video and audio intercoms
to suit your needs.

*We are a family run business with over 35 years
experience in home security and crime prevention.*



**Don't
become a
victim..**



www.maximumsecuritysystems.co.uk

Contact:

01582 864138 / 07746 111520

For a free quote and consultation

McCaffrey

Your local resource for residential
build, refurbishment and maintenance



General building works
Extensions
New builds
Internal refurbishment/alterations

Brickwork
Carpentry
Painting & decorating
Purpose made joinery

Plumbing and heating
Electrical installations
UPVC windows & doors
Garage conversions



call us to discuss your building requirements

01525 861041

info@mccaffreybuild.co.uk www.mccaffreybuild.co.uk

ADAM IN YOUR GARDEN

**TREE SURGERY, HEDGE TRIMMING,
TURFING, FENCE MAINTENANCE,
DECKING, PATIO CLEANING**



Qualified, Fully Insured, Competitive Rates
Free Estimates

TEL: 01582 518954 MOB: 07828 490360

Web Site: www.adaminyourgarden.co.uk



Based near Toddington, Bedfordshire.

We rescue, rehabilitate & re-home stray & abandoned cats.

We have lots of beautiful cats waiting for loving homes.

Ring the shelter on 01525 875993

or Sue on 01582 650167 to arrange a visit.

Registered Charity No. 1098984

Visit our website @www.straycatrescue.org.uk



EST.
1989

- Suppliers of traditional and modern equipment
- Working whirlpool & spa baths, power & steam shower systems on display
- Over 40 settings on display
- Complete installation service if required
- Personal friendly service from a family run business
- Wall and floor tiles
- Accessories
- Mirrors
- Bathroom furniture
- Heated towel rails
- Saunas
- Bathroom cabinets

SHEFFORD 01462 627002

www.bathroomvogue.com

Unit 4A, Shefford Industrial Park, St Francis Way, Shefford SG17 5DZ

Hire Clophill Village Hall



Wedding Receptions
Birthdays & Special Occasions
Dances and Discos
Club & Community Meetings & Activities

Phone: 07821 643 936

Mail: Clophill.villagehall@gmail.com Web: www.clophillvillagehall.co.uk

ROGER STOREY

YOUR LOCAL PAINTER AND DECORATOR

Friendly and Reliable Service

Many Years Experience

Please phone: **01525 861253** or **07800 777615**

ANDREW BAKER WINDOWS

9 SHEFFORD ROAD
CLOPHILL BEDS
MK45 4BT

SPECIALISING IN UPVC WINDOWS,
DOORS , CONSERVATORIES,
FASCIA , SOFFITS , GUTTERS AND
CLADDING. ALSO AVAILABLE FOR CARPENTRY
WORK. NO JOB TOO SMALL OR LARGE.

20 Years experience.
Free local quotes.

FENSA

Fensa Registered
FIVE YEAR GUARANTEE

Contact Andrew: **01525862804 / 07825017855**

Email: abakerwindows@gmail.com

Advertisers index

Architectural Services

S&S Coates Surveying & Design 34

Auctioneers & Valuers

W&H Peacock 37

Bathroom Services

Bathroom Vogue 46

Builders & Carpenters

McCaffrey Build 45

Stuart Benson Building Projects IFC

Car Services/Repairs

A&F Motors Ltd IFC

Mint Alloys 43

TC Coomber Car Services BC

Chimney Sweep

Poppins Chimney Sweep IBC

Cleaning Services

Daisy Cooper 27

Ovenclean 31

Computer Services

Compu-Doc 44

The Computer Man 37

Electrical Services

Stuart Drew Electrical Services 44

Financial Services

AIMS Accountants 36

ET Accountancy Services 32

Hills-Howson Financial Services 36

MB Accounting Services 48

SJ Tax & Accounting Services 29

Food and Refreshments

The Cafe at Peacocks 43

The Happy Plaice 40

Funeral Services

AL&G Abbott, Funeral Directors 34

Neville Funeral Service 41

Garden Services

Adam in your Garden 46

Garden Doctor 39

Green Thumb Lawn Treatment 42

JK Garden and Landscape Services 28

Root 'n Branch 44

Health & Beauty

A Cut Above Hairdressing 29

Ampthill & Flitwick Physiotherapy 40

Doula Root 30

Hairs & Graces 39

Linda Allsop Physiotherapy 29

Nicola Rayner Fitness 32

Pathways of Mindfulness 27

Route 66 Barbers 30

Slimming World 33

Tammys' Talons 28

Home Improvements

Christopher The Painter 28

Roger Storey - Painter & Decorator 47

David James Kitchens 26

Music and Entertainment

Greensands Community Choir 27

Nursery Schools

Clophill PreSchool BC

Clophill St Mary's C of E

Acorn Lower School and Nursery 33

Pet & Animal Services

Conifer Kennels & Cattery 44

Lizzie Brown Pet Care 38

Personal Dog Walker 29

Stray Cat Rescue 46

The Bluecat Luxury Cattery 31

Plumbing & Drainage Services

Beta Plumbing 42

Chapman & Kirby Heating 40

Warm Property Services 31

Print Services

Fidelity Design & Print IFC

Public Houses

The Stone Jug 30

Repair Services

Tim Downing Repair Services 42

Security Services

Maximum Security Systems 45

Travel Services

Select Travel Holidays 34

Tuition and Coaching Services

Rincon Tuition (Spanish & Maths) 38

TalkEasy Coaching 28

Village Hall

Clophill Village Hall 47

Windows/Replacement

Andrew Baker Windows 47

AW Windows IBC

Misty Double Glazing 27

IFC = Inside Front Cover IBC = Inside Back Cover BC = Back Cover

MB

ACCOUNTING SERVICES

accounting solutions for the
Self-Employed and **Small Business**
 including

HMRC tax returns • Accounts • Bookkeeping

For a totally confidential service at **very competitive rates** contact
 Richard Fairholm T: 01525 861087 M: 07714189994 E: mbaccounts@btinternet.com



Poppins Chimneys

**Chimneys Swept
Wood and Multifuel Stove
Installation & Liners**

Great Service - Great Price!



01525 860424 or 07858 688785
mark@poppinschimneys.co.uk

**NO PRESSURE SALES – YOU DEAL WITH
THE OWNER FROM START TO FINISH**



- ✓ A-rated windows as standard
- ✓ Composite doors
- ✓ High security
- ✓ Bifolding doors
- ✓ Conservatories
- ✓ Fascias, soffits and guttering
- ✓ Insurance-backed guarantee
- ✓ Fensa certificate



Contact: ANDY WOOD

01582 536944 or 07796 272539
sales@awwindows.co.uk



See reviews from satisfied customers at awwindows.co.uk

Clophill Preschool

**Your local Outstanding Preschool,
based at Clophill Village Hall -
welcoming children from
2 years of age.**

We'll help your child to become an inventive
and creative learner. With access to a fantastic
outdoor area, our focus is on natural and
exploratory 'play with a purpose'.



**Call us today to find
out more:
07765 887868 or
07936 006381**

www.clophillpreschool.co.uk



**MOT'S CLASS 4/5L/7
CAR SERVICING & REPAIR
TYRES & EXHAUSTS
AIR CONDITIONING
DIAGNOSTIC CODE READING**

**Collection
& Delivery**
SERVICE AVAILABLE
Please ask

AMPTHILL
01525 406330

UNIT F, AMPHILL INDUSTRIAL ESTATE, STATION ROAD, AMPHILL, MK45 2QY