

Vol 41 | No.10

FREE

# CLOPHILL SPOTLIGHT

DECEMBER 2019

**LOVE YOUR  
LOCAL NEWS**

# AMPTHILL PRINT CENTRE

DIGITAL PRINTING  
DESIGN & MARKETING  
DIRECT MAIL

*and much more...*

...and we're right on your doorstep at

Unit 24 Station Road Ind Est, Ampthill, MK45 2QY  
(Just off the A507 Ampthill bypass, past the Post Office)

#### WE PRINT...

- Stationery
- Newsletters
- Menus & Tent cards
- Brochures
- Flyers & Leaflets
- Catalogues
- Books & Booklets
- Direct mail
- Training Manuals
- Banners & Posters
- Greeting cards
- Calendars
- Labels & Stickers
- NCR pads
- Folders
- Exhibition panels
- CD/DVD duplication
- Photocopying

3 DAY STANDARD SERVICE | SAME DAY AVAILABLE

[www.fidelityprint.co.uk](http://www.fidelityprint.co.uk)

Get a quote 01525 300001 [quotes@fidelityprint.co.uk](mailto:quotes@fidelityprint.co.uk)

**fidelity**<sup>®</sup>

Unit 24 Station Rd Ind Est, Ampthill



D. Andrews  
P. Fleckney

## MOTORS LTD

Tel: (01525) 860292

Tel: (01525) 404919

208 Clophill Road, Maulden, Bedfordshire MK45 2AF  
89 Oliver Street, Ampthill, Bedfordshire MK45 2SA

**CAR AND COMMERCIAL VEHICLES  
ALSO CLASSIC & AMERICAN CARS  
SERVICING – REPAIRS – BREAKDOWN  
SPRAYING – M.O.T.**



### Stuart Benson Building Projects

Design, Build and Maintenance including Interior Refurbishments,  
Kitchen / Bathroom fitting, Tiling, Flooring, Skirting boards, Doors  
Garage conversions. Exterior Decking, Patios, Driveways  
Garden Offices/ Sheds

Tel: 07946 579862 or 01525 403083

Email: [benson.stuart@googlemail.com](mailto:benson.stuart@googlemail.com)



## A word from the Editor...

*Wishing you all a very Merry Xmas and a Happy New Year*

So this year is fast drawing to a close and the celebrations are well underway. I would like to take this opportunity to thank everyone who has contributed to Spotlight this year. To all the authors for their interesting articles, informative updates and designer posters; thank you and please do keep sending them in.



Many thanks also to the Spotlight team for their help and support, Chris our creative designer, Emma our resourceful ad manager, Richard our finance whizz and last but not least our dedicated band of distributors led by Pete.

Without you all Spotlight would not survive as the fantastic magazine it is.

Thank you, and enjoy the festivities. Spotlight will be back in February 2020.



*Please note: Deadline for articles for February 2020 is Friday 27th December*

## The magazine staff

EDITOR	Elaine Jones editorial@clophillspotlight.co.uk	07918 975823
ADVERTISING MANAGER	Emma Frost ads@clophillspotlight.co.uk	
DESIGN MANAGER	Chris Abrahams cmabraahams@yahoo.co.uk	
DISTRIBUTION MANAGER	Pete Liddle	860113
TREASURER	Richard Pearson	861110

***Deadline for articles is 20th of the month***

You can also read Spotlight online

**[www.clophillspotlight.co.uk](http://www.clophillspotlight.co.uk)**



*Christmas at St Mary's Church*



*Carol Service*

*with nine Carols and nine readings*



*Christmas Eve 6pm*

*to be led by Rev Martin Randell*

*Christmas Day 10.45am Parish Communion*

*to be led by Preb. Eric Shegog*

*All very welcome*

*Peace and joy to everyone in Clophill*



# St Mary's Church News

---



Over 100 people gathered in St. Mary's Church on Remembrance Sunday for the annual service, followed by the Act of Remembrance at the War Memorial. After the two minutes silence eight wreaths were laid by various organisations and private parishioners. This year we particularly thought of those who gave their lives in the 2nd World War.

The next day a few parishioners were joined by the whole school to mark the actual time of the Armistice of 1918. Even the smallest children kept the 2 minutes silence beautifully.

The **Christmas Lunch** will be held on **Wednesday 11th December**. If you wish to come please sign the list in either of our churches.

There will be some changes in our Christmas services, which you will find on the page opposite, and on posters around the village.

---

## Clophill Heritage Trust Update

Following a successful year of events, we have been busy planning for 2020 – we have more foraging workshops, introductions to herbal medicines, guided walks and countryside craft days as well as outdoor musical comedy, prosecco & pamper evenings and our regular wreath making and pumpkin festival.



Everyone can feel a little low after Christmas so why not book something to look forward to and come to our fundraising Cabaret evening on 25th January – we have a line-up guaranteed to entertain you with singing, dancing, magic, comedy and more! All money raised is going towards buying solar panels to make the Eco Lodges even more environmentally friendly. Tickets are £20 each which includes a glass of bubbles and canapes, please bring your own drinks for the rest of the evening. Tickets are selling quickly so book now at [www.clophillecolodges.co.uk/events](http://www.clophillecolodges.co.uk/events) or call us on 07935 911207.

Remember that The Eco Lodges and the ruins of old St Mary's church can be hired out for private events and photo shoots. We already have weddings, birthday parties and a naming ceremony booked in for next year so think of us if you are looking for a beautiful, unique venue for your event.

If you would like to take part in any event or volunteer to be a helper, please contact either Emily or Louise on 07935 911207, for a full list see [www.clophillecolodges.co.uk/events](http://www.clophillecolodges.co.uk/events)

***We would like to wish you all a Merry Christmas and Happy New Year.***

***The CHT Team***

The CHT Team

For info call 07935 911207 or email [info@clophillecolodges.co.uk](mailto:info@clophillecolodges.co.uk)  
[www.Facebook.com/ClophillEcoLodges](https://www.Facebook.com/ClophillEcoLodges)

It was on a starry  
night...



## CLOPHILL COMMUNITY CAROL SERVICE

Sunday 22 December 2019 3pm  
Clophill Methodist Church

Join us for a star themed carol  
service followed by refreshments.

All welcome

# Santa Claus is coming to town!

Santa Claus will be visiting Clophill on **Sunday 15th December**, handing out sweets for the children and raising money for Clophill Village Hall.

He will be starting his journey from 4:45pm at the far end of the village towards Castle Hill Court returning via the High Street, to Kiln Lane, Back Street and Cainhoe Road, then back via the High Street, to the Flying Horse and Goodwood Close. Timings are estimated, please allow 5-10 minutes either side.



Santa needs your help! We're looking for 'elves' to help with handing out sweets and collecting donations. We will meet at Clophill Village Hall at 4:15pm, for Mince Pies and Mulled Wine before heading out on our tour of Clophill. If you would like to volunteer please call Steve on 07831255807 or email [steve.langhorn@gmail.com](mailto:steve.langhorn@gmail.com)

**Ho! Ho! Ho!**

## ABBA Sensation hits Clophill

The amazing Abbagirls tribute band hit Clophill on Saturday 16th November to star in a sell-out night of fun and dancing at Clophill Village Hall. As one of the best known Abba tribute bands on the circuit, having played to audiences of up to 150,000 in places as far apart as Las Vegas and South Korea; they delivered a fantastic rendition of those classic Abba hits that guarantee to get everyone on their feet dancing.



A great night was had by all, and along with kind contributions from local businesses to our extensive raffle, **we raised £1100 for Village Hall funds** which we will reinvest in keeping the facilities at the highest possible levels for our users.

We are planning a much more extensive entertainment calendar for 2020 featuring everything from Rock & Roll to Ska. Keep your eye on Spotlight and local noticeboards for details.

Clophill  
Preschool 

# Christmas family craft morning

**Saturday 21 December 10am-12pm**

**All welcome**

We will have a large selection of craft activities for children to make and take away (suitable for 2 to 9-year-olds), tombolas for adults and children, lucky dip and of course, Santa's grotto.

Tea, coffee and cake available to buy.

Children £3.50 entry each. Adults free.

Santa's  
grotto  
£3.50



Clophill Village Hall, Kiln Lane, Clophill, MK45 4DA

07765 887868 Imogen 07936 006381 Chris

[www.clophillpreschool.co.uk](http://www.clophillpreschool.co.uk)





# Clophill Preschool News

## ***Hello and welcome to the festive season!***

We have really enjoyed being outside in the cold, wet and mud. The children have been kicking up the fallen leaves and watching their warm breath in the cold air. Because we have done a lot of changing in and out of wellies and waterproofs it's been a great opportunity to practice these independent skills of self-care including doing up zips, putting on shoes and learning to wipe feet on the mat.



The children have really taken to the opportunity of cooking in the moment. They know to ask to do it if they want to, they can remember recipes and ingredients and are learning the skills to scoop and measure, mix and pour.



Back in November we once again joined with many from the village to commemorate the fallen soldiers on Remembrance Sunday. It was a beautiful clear morning and the sun shone as we followed others to lay our wreath. This year the children, with the help of Michelle Akay, painted poppies on stones that staff and children laid in a circle on the cenotaph.

Our Happy School Bags collection did brilliantly once again, raising £280 which we are spending on spare wellies and waterproofs and small sheds to store music equipment and construction in. Thank you to those of you who donated clothing and bedding, we have another collection in March.

We have all been learning sign language from Sarah and Chris. While we have always used it particularly to support those who struggle with communication, we are now trying to make it a part of every day at preschool. It really helps all children to focus and engage while encouraging their communication and language development; it also reduces frustration while building bonds through social interaction. We even used it throughout the songs at our Christmas Nativity. Thank you to Rosemary for coming to do the crib service and to Santa for popping in..! We are looking forward to Silas, from the Methodist Church, coming up to read us the Christmas Story.

More change has been the addition of our chickens, currently named Spotty and Dotty, though their names seem to change daily. The children have loved looking after them and getting to know them.



Our next event is our fabulous Christmas Craft Morning on Saturday 21st December from 10-12noon. This is a great event for all the family with lots of crafts and festive fun, come and join us. Following that some of our children are joining us at the Methodist Carol service on Sunday 22nd at 3pm, to sing Twinkle Twinkle to everyone.

***Happy Christmas everyone, have a safe and wonderful time – from all of us at Clophill Preschool.***

PS: Please check out our newly updated website [www.clophillpreschool.co.uk](http://www.clophillpreschool.co.uk)

# Grant funding for your community!



Central  
Bedfordshire  
**Ward  
Councillor**  
Grant Scheme

**Are you involved in a local group or project in our area that needs a bit of help? Or perhaps you have an idea about doing something for the community but need some funding to get it going?**

If so, you should contact your local Central Bedfordshire Councillor who may be able to help. They'll tell you about a grant scheme which supports community action through small local grants for voluntary and not for profit groups.

Whether the funding is for cultural, environmental, sporting or social projects, they must offer a community benefit. And grant applicants will also need to have match funding which equals the amount of grant that they are seeking.


Your local Ward Councillor contact details:

**Clr Mike Blair** - [mike.blair@centralbedfordshire.gov.uk](mailto:mike.blair@centralbedfordshire.gov.uk)

**Clr Paul Duckett** - [paul.duckett@centralbedfordshire.gov.uk](mailto:paul.duckett@centralbedfordshire.gov.uk)

**Clr Mark Smith** - [mark.smith@centralbedfordshire.gov.uk](mailto:mark.smith@centralbedfordshire.gov.uk)

For more information please visit

 [www.centralbedfordshire.gov.uk/grants](http://www.centralbedfordshire.gov.uk/grants)

**A great place to live and work.**



# Clophill & District Flower Club



Christmas is definitely on the horizon, no doubt about that. We already see it in all the shops, and our floral demonstrator at the club's November meeting gave more than a nod to the coming season, with glitter and gold, and the wintery themes of her arrangements.

But before we settled down to enjoy the flowers, we welcomed two special ladies from the Bowel Cancer Support team at Bedford Hospital. They brought along some of the "training dummies" purchased with our club's charity donation of £800. These dummies help them to show patients how to use the specialist equipment when recovering from cancer surgery; they are a helpful aid in demonstrating correct procedures. We were all very interested to learn about this very worthwhile use of the money donated.



Theresa Rodriguez our floral demonstrator for the evening has been to our club many times. Her varied shapes and styles and choice of flowers and foliage in her designs are always a delight. The peach roses ("Mayfair") in her Jack & The Beanstalk arrangement were my particular favourite. Theresa's use of the new partially biodegradable dark brown floral foam, was an interesting tip to encourage us to move away from the traditional green, non-biodegradable foam.

Our next demonstration evening will be our Christmas Special in Clophill Village Hall at 7.30pm on 5th December with "*Deck the Halls*" by Nigel Whyles. Ticket holders only.

**Please Note:** Our Annual General Meeting will be held on at 7.00 pm on **9th January 2020** (the **second Thursday** in the month, not the first one), also in Clophill Village Hall. Everyone welcome. *Joan Tarmu, Committee Member*



## Churchyards, Cemeteries and the Victorians - Black Feathers to Black Underwear

**Monday 3rd February 2020**

The Victorians had a preoccupation with death which is hard for us to understand. Many churchyards were full and in a terrible state. This talk shows the effects that the opening of new cemeteries had on Victorian attitudes to death and mourning and illustrates the incredible growth of the funeral industry. All the items of mourning jewellery and funeral ephemera on display are original.

***Visitors are very welcome!***

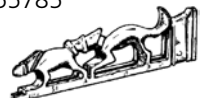
**Lecture Theatre, Flitwick Library MK45 1QJ**

7.30 for 7.45pm. £2 for members and £3 for visitors, payable on the door.

Further details: [clive.makin@ntlworld.com](mailto:clive.makin@ntlworld.com) Tel: 01582 655785

[www.adalhs.org.uk](http://www.adalhs.org.uk)

**Amptihll & District Archaeological & Local History Society**



# Clophill's Serving Survivors of WW1

by Sue Pearson

*Continuing our series in celebration of Clophill's brave men who fought in and survived the First World war...*

**William Billington** was a Sapper in the Royal Engineers. He enlisted in January 1917 and was immediately posted to France. There he was involved in making roads at Vimy Ridge, Ypres, Cambrai and the Somme. He remained overseas until the cessation of hostilities and returned to the UK to be demobilised in March 1919. He was born in Silsoe in April 1877 and later lived at 1, Barton Cottages, High Street, Clophill. In 1901 he lived in Silsoe with his wife Ada (Roberts), who was then 34 years old. William was a Market Gardener, and they had 6 children living with them. In the 1911 census they were living in Bedford Cottages, Jacques Lane, Clophill. William passed away in April 1955, aged 77.

**George Bone** was born in Caldecote in 1887 and was the son of James and Emma Bone of Glen Farm, Great Lane. He was therefore brother of John Bone who is named on our village memorial. He married Emily Sharman in 1909 and by 1911 he was a Cowman living in Turvey. He enlisted with the 1st Bedfordshire Regiment, known as the Yellow Devils and was wounded at Mons. After he convalesced, he was promoted to Corporal. In 1916 George was twice wounded at Ypres and was sent back to Winchester to spend months in recovery. Later that year he confirmed receipt of parcels that he had received in the trenches. By 1918 he had been promoted to Sergeant and had joined the Command Depot in Ampthill to recover from trench feet. However he was involved in a cycle accident and had to go to Cambridge for "an amputation." By July he had returned to the unit in Ampthill. In 1939 he was working as a Farm Carter and living in Cold Brayfield near Newport Pagnell. He died in Bedford Hospital in 1940.

**Thomas Boyles** – Born in Aylesbury in 1886. He married Charlotte Peat in Clophill in 1912. He enlisted in 1915 in Watford, where he was living at the time. His address was later given as High Street, Clophill (his wife's family home.) He gave his occupation as Grocer/Draper's Porter. He became a Private serving with the 3rd Battalion, Buffs (East Kent) Regiment in Salonika (Macedonian Front). In 1918 he had to return to their Depot in Canterbury as he had malaria. He died in 1952 having had one son, David, born in 1920.

**Frederick W Braybrook** was born in Clophill in 1871. He married Emma Wildman and they lived in "Main Street," Clophill until at least 1901. He was a shepherd at this time. They had 10 children together. Sometime before 1911 they moved to Luton where Frederick worked as a Carter for the Borough Council. Frederick was a Private in the Bedfordshire Regiment; he volunteered in March 1915 and was drafted to India where he was engaged in duties at various garrison outposts. He was sent home and discharged in 1918 for causes due to his service in July 1918. Upon his return he learned of the death of his eldest son detailed below. He died in 1938 in Luton.

**Frederick Leslie George Braybrook** was born in Clophill in 1893, by 1911 he worked as a moulder at an Iron Foundry and was living with his parents in Luton. Frederick enlisted and served as a driver with the 54th Signals Co., Royal Engineers and in January 1915 and was posted to the Dardanelles and then Egypt. He took part in the Battle of Gaza and then other engagements as part of General Allenby's offensive. He was 5' 4" and blotted his disciplinary record a little by being late and on another occasion insolent to an NCO! He had also suffered a leg injury in 1916. He died of typhoid on 14 October 1918 at the age of 25. Frederick is commemorated on the Luton Memorial.

# Come into the Garden

with *Kate Gardner*



There used to be a school of thought that resulted in us 'putting the garden to bed' during the winter months. What was often left was a garden devoid of colour or shape where every plant had been severely pruned and the borders were left bare. While you may not want to go outside and walk on the grass or soil in case you damage the soil structure when it's very wet, containers planted up with a selection of foliage and flowers can brighten all areas; giving colour and interest over the cold season.



Skimmia japonica

Although these plants are not as flamboyant as those used in summer containers, you can still make a statement with careful plant selections.

Preparation is the key so here are some practical steps to follow to make sure that you get the most from your planters. Plants grow very little in winter so make sure you start with good-sized plants and use sufficient numbers of plants for the size of container to make an impact from the start.

Position your container where it will get as much light as possible during the winter months to ensure plant foliage remains green and healthy. Raise your containers off the ground on pot feet or bricks to aid drainage and help prevent the freezing conditions that cause pots to crack. Make sure to choose frost-proof terracotta or containers made of plastic, fibreglass or wood. Bubble wrap containers in severe weather to reduce damage to plant roots. It is not necessary to feed container plants during the winter but you will need to check the compost regularly and water carefully as compost can dry out quickly in mild weather.

Part of the fun of creating pots and containers is that you can put plant combinations together that you may not find work in the summer. One of my favourites is to pair the glossy, evergreen foliage of black **Ophiopogon planiscapus 'Nigrescens'** with the pale greens of the cornus. Add some snowdrops into the mix and some variegated trailing Ivy to soften to edges of the pot. Wooden or plastic troughs can be planted up with a range of perennials and small shrubs providing flowers, scent, seed heads, berries and more. **Skimmia japonica 'Rubella'**, **Gaultheria procumbens**, **Bergenia cordifolia**, **Erica carnea 'Springwood White'**, **Viburnum tinus**, **Euonymus fortunei** and **eryngium** will give instant impact and can be transplanted into your borders come the spring.

For a real splash of colour why not try carmine Cyclamen alongside the more muted **Carex evergold** and **Skimmia japonica**. A miniature ivy allowed to tumble over helps to soften any hard edges. Once the cyclamen is over it can be replaced with some mini daffodils or tulips. If you would prefer something muted then why not try winter-flowering hellebores, such as **Helleborus niger** and combine it with a variegated holly such as **Ilex aquifolium Silver Queen** to complement the white flowers.

If you have a sheltered spot near to a door, then I would seriously recommend planting up a couple of outstanding winter scented plants. **Hammamelis** is a striking plant that bears yellow and orange flowers along its bare branches. They have thin, spidery petals and a rich scent. It needs acidic soil but does grow happily in containers. **Chimonanthus praecox** is a woody shrub with striking yellow flowers along its branches. The blooms are cup-shaped and hang down, releasing their intoxicating fragrance. It is fully hardy but likes a sheltered spot.

Miniature iris are so delicate and ideal for containers. But it's their gentle scent that makes them so great for winter gardens. Try **Iris reticulata** or **Iris unguicularis** for elegant purple and blue flowers. **Happy Gardening**

# Character Assessment of the Parish

The Village is creating a **Character Assessment of the Parish** to inform and help support design policies in the Neighbourhood Plan. If you 'Google' Character Assessments Neighbourhood Plan, you will find examples of how other Parishes have done this and published theirs. The character assessment describes the distinct appearance and feel of a road or area. It is important this is documented because all developments are assessed against the character of the area. ***Surely, we would want any development to conserve or enhance the unique qualities of the local area wouldn't we?***

How well do you know where you live? Could you describe it and take some pictures?

If so, I would love to hear from you as this could help form the basis of a Character Assessment of Clophill. I'm looking for help with:

- The Green and Conservation Area
- Cainhoe Rd and Readshill
- Back St/Mill Lane/Kiln Lane
- Great Lane/Little Lane/Church Path
- Shefford Rd/Jacques Lane into Beadlow Land south of the A507 has been done – but we are happy to take additional material.

We would also welcome assessments on any areas not listed above. If you would like to chat through how this works, please contact me with your details and I'll happily give you a call.

*Steve Rodell – Chair Clophill Parish Council 07738 182407 / [steve.rodell@clophill-pc.gov.uk](mailto:steve.rodell@clophill-pc.gov.uk)*



Bedfordshire  
Cambridgeshire  
Northamptonshire

## Wildlife walks & talks



### Conservation Grazing *with Matthew Johnson*

**Monday 27th January, 7.45 pm, Maulden Church Hall**

Matt, BCN's Livestock Officer, will give an insight into the vital conservation work done by grazing animals. It is not just releasing sheep and cattle into an area - much work is done before, during and after animals are put on a reserve. Come along and hear about the process. It is not necessary to book – just turn up! **£3 per adult**

### Quiz Night

**Friday 7th February, Maulden Village Hall, 7.15 for a 7.30 pm start**

Join the Wildlife Trust local group for a fun evening and maybe a bit of a challenge. Pit your wits and see who will emerge victorious. Teams of four to six (we can match people to teams if needed). Fish supper or a Vegetarian option. Booking essential.

Wine, beer and soft drinks available at the bar. Come along for a fun evening and help support local wildlife activities. **Open to all. £10 per person**

For bookings or additional information please email [flitvale.info@gmail.com](mailto:flitvale.info@gmail.com) or ring Ann on 075801 78889 between 6pm and 8pm or at weekends.

# Clophill Toddler Group News



Clophill Toddler Group welcome all babies and toddlers from 0-3 years old on a Friday morning from 10am - 11.30am. New members are always welcome. We provide a safe and fun environment for the children to play and grow, plenty of fun toys for all ages with a specific area for smaller babies including bouncers and play mats so that all adults get a chance for a hot drink and a chat! We

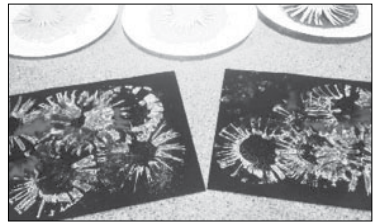
provide healthy snacks for the children during the session and also have some singing at the end to wind down.



This Autumn term we welcomed many new members and it has been amazing to watch the children explore together and create their own friendships.

We have created some fabulous crafts, decorated biscuits, finger painted poppies and run wild outdoors with Clophill Preschool.

We would like to thank everyone that supported our stall at the Fireworks Night event at St Mary's school, we raised nearly £100 for the group which goes towards our Christmas Party!



We are so looking forward to the Christmas Party this year, we always have a visit from Father Christmas, fun games, extra snacks and a whole lot of festive cheer!

If you're considering coming along for the first time then please don't feel nervous! The first session you attend is free and we are a very welcoming and friendly group.

Feel free to follow us on Facebook to see what we're up to, or send us a message.

- [www.facebook.com/Clophilltoddlergroup](http://www.facebook.com/Clophilltoddlergroup)
- [chaz\\_messer@hotmail.com](mailto:chaz_messer@hotmail.com) – Clophill Toddler Group Chairperson

## ROOTED CHRISTMAS TREES FOR SALE AND HIRE

**Non needle drop, rooted and sustainable  
(They can be replanted back into the ground after Christmas)**

A selection of different varieties and sizes for sale as bare root or potted specimens to order

### Species include:

Norway Spruce @ £3.50/ft (for all bare rooted trees)

Caucasian Fir and Korean Fir @ £6/ft (for all bare rooted trees)

All potted trees are priced individually according to size and species



Contact **Colin Carpenter** on **01525 860391** or **07751 356094** for prices and advice



# St Mary's School News

After a busy and exciting term I think we will all be looking forward to the Christmas break. Our last day is Friday 20th December. In early November we were assessed by an outside professional to be re-accredited for our work with Values Education. We have been a Values school for many years, teaching children about a different, carefully chosen, Value each month; reinforcing and celebrating children living our Values through our weekly Collective Worships as well as our day-to-day teaching. We are delighted to announce our Values Mark was renewed, having received an incredibly positive report. We would like to say a huge 'thank you' to everyone who spoke to the assessor to share our Values story with him and make the result such a success.

In November, Year 3 and 4 children went on the Faith Tour visiting a Mosque Gurdwara, a Church in Queen's Park area Bedford. This supported the children's work in Religious Education, learning about different places of worship.

We were particularly proud of all our children who attended the two minutes' silence at the church on 11th November. The school also held a special **Remembrance Worship** on 12th, led by Reverend Jane, our school chaplain. On both occasions the children wore the special poppies they made in class and behaved impeccably – showing a clear respect and understanding for the importance of the occasion. In the churchyard two of our Year 4 children presented a special wreath made by our younger children and in school, Year 4 read out the names of those from the village who fought in the war, whilst Year 3 read a special prayer they created to help remember and thank all soldiers for their bravery. We would especially like to thank Mr. Dunn who attended both occasions and played his bugle as part of the act of remembrance.

Also in November, we welcomed parents into school for our new "Come and Learn with Me" sessions. Parents were able to visit their child's class and take part in a section of the lesson with them. We also held our Autumn Term Parent Consultation sessions where parents could see their child's work so far this year and talk to their teacher about their progress. It was lovely to see so many parents at both events and we have received some very positive feedback, particularly in relation to the "Come and Learn with Me" sessions.



Our fantastic School Council put on a great fundraising event as part of the annual Children in Need day. The children could wear their own clothes, guess how many spots on Pudsey's eye patch, complete a colouring competition and enjoy a biscuit and chocolate milk. We are delighted to announce that we raised £180. On 20th November we held a "Smiley Sam" assembly in preparation for his arrival on 10th December. Smiley is a big train who brings Father Christmas along to say hello to us! and explains the importance of Keech Cottage hospice to encourage the children to raise money for them. If anyone from the village would like to contribute too, we will continue to collect donations at the school office and forward them on.



As the end of term approaches we would like to wish our friends and neighbours a very Happy Christmas and peaceful, healthy New Year. We look forward to greeting the children back into school on Tuesday 7th January 2020.

### **In other news:**

- We took part in **Outside Classroom Day**, a global campaign to celebrate and inspire outdoor learning and play. On the day, thousands of schools around the world take lessons outdoors and prioritise playtime. The children had a wonderful time using our outside space to support some of their lessons.
- Anyone attending our **Fireworks** fundraising evening on 2nd November would agree that Friends of St Mary's (PTA), as always, did an amazing job of organising a very professional event. They work incredibly hard to ensure that it runs smoothly and everyone has a great evening. Thank you to everyone who attended to support the event, despite the weather, we really appreciate it.

### **Our value for December is *Commitment***

This is the quality of being dedicated to something, for example a cause, activity or faith. It is also known as a pledge or an undertaking. A commitment is never supposed to be broken, if it is; that means it was never a commitment but more of a pretention. We will be thinking about commitment over the month and particularly considering how we can make personal promises and keep them. We will also be spending time thinking about the commitment shown by people in the Bible, especially through Advent and the Christmas story.

## **Acorn Nursery News**

We've been busy learning through play about festivals, finding out why we celebrate Fireworks night through the Guy Fawkes story and looking at why Remembrance Day is so important.



The children are very enthusiastic about bringing in items for our Show and Tell Sessions held on a Wednesday, themes included; My Favourite Book; Something I Made; Animals; When I Grow Up; Music. We have some sessions available for January, if you are interested in additional sessions for your child next term or in your child starting in Acorn Class, please contact Mrs Hayes: email: [nursery@clophillstmarysschool.co.uk](mailto:nursery@clophillstmarysschool.co.uk)

### **Important information for parents with children moving to Middle School or requiring a Reception class place in September 2020**

Online applications preferred at: [www.centralbedfordshire.gov.uk/admissions](http://www.centralbedfordshire.gov.uk/admissions)  
(hard copy applications are available from the school office).

### **Deadline for Middle School & Starting School Places: 15TH JAN 2020**

We urge parents to make their applications ASAP and please let the school office know if you have any questions or problems relating to your application.

Mrs Topliff: 01525 860206 or [generaladmin@clophillstmarysschool.co.uk](mailto:generaladmin@clophillstmarysschool.co.uk)

*These notes are a resume only. Official minutes are available on the internet and notice boards. All official correspondence should be sent to the parish clerk and not individual councillors.*

Clophill Parish Council has a new website, with a new look and feel and more information. Most of the old content has been moved over but we welcome your input on what information you feel would be useful. [www.Clophill-pc.gov.uk](http://www.Clophill-pc.gov.uk) There is a mailing list you can join and receive alerts, plus contact information on how to reach James Stirling, the Clerk to the Council. [www.clophill-pc.gov.uk/contact](http://www.clophill-pc.gov.uk/contact) If you notice, a broken light owned by the PC there is a reporting page and information on where the lights are. [www.clophill-pc.gov.uk/reporting-faulty-street-lights](http://www.clophill-pc.gov.uk/reporting-faulty-street-lights)

Paul Downing informed the meeting that the AGM for the Ampthill Community Safety Group will be on 7th January, all welcome – they are looking for more recruits.

Ward Councillors Duckett and Smith updated the meeting with:

- the CBC budget balanced
- they had no increase of income from the Government this coming year, but they still provided excellent service
- postings have been put on social media regarding road maintenance as part of a National survey requesting local comment; highways acknowledge that at times the traffic hold-ups at the A6 roundabout are problematic.

Section 106 monies have been allocated to Arnold and Harlington schools, neither of which Clophill children usually attend.

It was noted that firefighters from Bedfordshire have been helping with the recent flooding by the river Don.

Planning applications, two further applications have been recently received, one concerning 87 High Street and the other 5 The Slade.

**Lakes development** - the agreement will be signed before Christmas after a couple of minor amendments, leaving no 'wriggle room' for the developers.

**Readshill development** - another meeting with Charles Robinson is to be arranged as he didn't attend the first one. The plan is for a six-bedroom retirement nursing home, the design of which should fit in with the nature of the quarry, e.g. not having a dark slate roof. The Council is to receive a detailed report from the Inspectorate.

**Recreation Ground** - Mr Grainger has cleared up the site and re-fixed the seating in the shelter. If broken again, it will be removed permanently. A meeting is planned between the youth of the village and Alex - a youth engagement leader. It is hoped that a weekly club can be set up encompassing various outdoor activities.

**Old Church Path** - since the last meeting three local residents have contacted the council so further discussions were held. Several ideas were put forward regarding the type of deterrent to unwelcome drivers who go up to the Old Church and Eco Lodges at night:

# Clophill Parish Council

Continued

---

1. a time activated barrier – open during the day, closed at 10pm, only activated by a specific device
2. signage – an ETO (Experimental Traffic Order), namely no traffic to go up the roadway between 10pm and 6am. This Order gives the Police greater authority when confronting drivers. After six months and if it is an effective deterrent, a TRO (Traffic Restriction Order) could be looked into.

Some residents from Church Path joined in the discussions. They thought that an ETO cannot be applied to footpaths (which Old Church Path is) and ownership of this land stops at the central point. The Parish Council confirmed it owns the land either side of one section of the path. It was then suggested that a traffic order/ speed restriction signs could be supported by cameras. The Council will need to review the options, with input from Highways, Police, English Heritage and a legal opinion, before a resolution can be put forward and if required, funds committed.

**Allotments** - there were issues with a couple of tenants and it was agreed that letters be sent to serve notice on these. An offer of help from some Young Farmers to set out the allotments was appreciated. A replacement gate post at Townshott allotments has been installed and funds approved.

**Arboricultural assessment of trees** owned and managed by the PC . Councillor Carpenter has surveyed all the areas by Townshott and the Old Church. He has identified those trees with 'safety' problems and contacted a couple of tree surgeons to ask for quotations to rectify them. A second survey is to be planned.

**Keech Hospice** - requested grant aid funding of £240 to support 6 x hydrotherapy sessions at £43 each. The full sum of £258 was proposed and approved.

**Neighbourhood Funding** - the 2011 housing survey needs is now out of date and should be reviewed. Resolved to apply for additional funding for the publishing and delivery of relevant leaflets.

**Replacement Skate Park** - there has been a request to replace the current metal skate circuit with a concrete one. Section 106 monies could go towards this (assuming developers are willing to contribute).

Don't forget this is your Parish Council, a team of enthusiastic and passionate folk who live in the village and who work really hard on your behalf to ensure that our village is a safe and superb place to live. Come and support them, even if you don't have a concern.

## Planning

**CB/19/02980/FULL**

Location: 3 Kiln Lane

Proposal: Two storey rear extension, first floor front extension, dormers and alterations

**Resolved our Objection remains the same**

The next Parish Council meeting will take place at the Methodist Church Hall  
at 7.45pm on Tuesday 14 January

# What's on in and around Clophill



DECEMBER

15

**Sunday 15th**  
**Santa and his Sleigh** visits the village, starting at 4:45pm. *See poster and route map in this issue*

21

**Saturday 21st**  
**Clophill Preschool** Christmas Family Craft morning, Village Hall, 10am – 12noon. *See poster in this issue*

22

**Sunday 22nd**  
**Carol Service** Methodist Church, 3pm. *See poster in this issue*

24

**Tuesday 24th - Xmas Eve**  
**Carol Service** St Mary's Church, 6pm. *See poster in this issue*

25

**Wednesday 25th - Xmas Day**  
**Parish Communion** St Mary's Church, 10:45am. *See poster in this issue*

JAN

9

**Thursday 9th**  
**Clophill & District Flower Club, AGM** Village Hall, 7:00pm.

25

**Saturday 25th**  
**Eco Lodges Cabaret Evening** Village Hall, 7:30pm.

## On throughout the month...

**Tuesdays...**in term time

- **Clophill Preschool - Stay and Play** 9.30am-10.30am Village Hall, See 'Village Groups' for contact details

**Wednesdays...**

- **Tea and Chat** 10.30 to noon, Methodist Church

**Thursdays...**

- **Thursday Leisure Club** 2pm, St Mary's Church

**Fridays...**

- **Clophill Toddler Group** 10am-11.30am, Village Hall, See 'Village Groups' for contact details

**One Saturday a month...**

- **Messy Church** 4pm-6pm, Clophill Methodist Church. Dates: Dec 14; Jan 25; Mar 28. See 'Village Groups' for contact details.

### CHURCH SERVICES

#### Regular services at St Mary's Church, Clophill

1st Sunday	8am, Holy Communion; 10.45am, Family Praise
2nd & 4th Sundays	10.45am, Parish Communion
3rd Sunday	10.45am, Morning Prayer/Praise
5th Sunday	10am, Benefice Services

#### Regular services at Clophill Methodist Church

1st, 2nd, 4th, 5th Sundays	10.30am Morning Service
3rd Sunday	10.30am All Age Worship Service

If you have any diary dates that you would like included on this page, please email [clophillspotlight1@hotmail.co.uk](mailto:clophillspotlight1@hotmail.co.uk)

# Parish Registers for December

**1819**

## **Baptisms**

- Dec 6 Catherine, daughter of Joseph and Catherine Horn, father a carpenter.  
Dec 25 William, son of John and Mary Gudgin  
Eliza, daughter of Elizabeth Denton, baseborn

## **Burials**

- Dec 14 Sarah Field

**1869**

## **Baptisms**

- Dec 26 Arthur James White  
Elizabeth Webb, mother a single woman  
Harry Bretton, mother a single woman  
Henry Grummitt

## **Burials**

- Dec 7 William Cunnington (?) 42

**1869** (Continued)

## **Burials**

- Dec 17 William Lincoln, 68  
Dec 22 Mary Ann Hall

*Total for year 29, 13 male, 16 female*

**1919**

## **Baptisms**

- Dec 28 Kathleen May Matthews

## **Burials**

- Dec 23 John William Sharp, 634

**1969**

## **Marriages**

- Dec 6 Barry John Tomsett of Luton, 24 to Janet Scott, 20

---

## **RECENT REGISTERS**

### **Baptism**

- Nov 24 Sebastian Steven Paul Compton-Jones



**THREE KINGS CHRISTMAS TREES**

**Fresh Cut Christmas Trees**

**Direct from the Grower**

Please come and visit us and have a look around

All trees are displayed inside

Opening from:  
**SATURDAY**  
30<sup>th</sup> November



9 am - 6pm  
7 days a week

GROWS WELL

SEVEN ACRES NURSERY, SHEFFORD ROAD,  
(BEADLOW) CLOPHILL. SG17 5PL

# Useful numbers

<b>Gas</b> (Emergency)		0800 111999
<b>Electricity</b> (Emergency)		0800 7838838
<b>Emergency Fire/Police/Ambulance</b>		999
<b>Water/Sewage</b> (Anglian Water)		0845 7145145
<b>Telephone</b>	(Customer Services) 150 (Faults)	151
<b>Highways Department</b> (Central Bedfordshire Council)		0300 3008049
<b>Benefits Agency</b> (Bedford office)		01234 361500
<b>Registrar's Office</b> (Births/deaths/marriages)		0300 3008089
<b>Rail</b> (Enquiries)		0845 7484950
<b>Buses</b> 01234 262151	(Link A Ride) 01525 840511 (Flittabus)	01582 406561
<b>Luton Airport</b>		01582 405100
<b>Swimming</b>	(Flitwick) 01525 717744 (Robinson Pool)	01234 212479

## LOCAL GOVERNMENT

<b>Central Beds Offices</b> (Chicksands)		0300 300 8000
<b>Mid-Beds MP</b>	Nadine Dorries	01462 811992
<b>Central Bedfordshire Councillors</b>	Michael Blair	01525 404513
	Paul Duckett	07988 184061
<b>Clophill Parish Council</b>	(Clerk) James Stirling clerk@clophill-pc.gov.uk	01462 887226

## HOSPITALS

<b>Bedford</b> (North & South)	01234 355122	Admissions	01234 261150
		Appointments	01234 359012
<b>Luton &amp; Dunstable</b>			0845 1270127

## DOCTOR'S CLINICS

<b>Ampt Hill</b>	(Houghton Close) 01525 300898	(Oliver Street)	01525 631395
		(Greensands)	01525 631390
<b>Shefford</b>	Enquiries 01462 818620	Appointments	01462 810034
<b>Barton</b> 01582 528700		<b>Flitwick</b>	01525 715300

## POLICE

<b>County Police HQ</b>		Non Emergency	101
<b>Ampt Hill Station</b>			01234 841212
			101

## CHURCHES

<b>St Mary's Parish Church</b>		RECTORS POST VACANT	
	(Church Warden) Rosemary Ilett	mandrilett@ontel.com	01525 860274
<b>St Francis RC Church, Shefford</b>		Ian Gordon	01525 860875
<b>Clophill Methodist Church</b>		Jim Davies	01525 860829
<b>Baptist Churches</b> (Ampt Hill) Doreen Gibbs	01525 862424	(Maulden) Ian Crawford	01525 634325
		(Shefford) Hazel Arnold	01462 812564

## SCHOOLS

<b>Clophill St Mary's C of E Lower School &amp; Nursery</b> (Headteacher Mrs K Bingley)		01525 860206
<b>Harlington Upper School</b> , Harlington		01525 755100
<b>Preschool</b> clophillpreschool@gmail.com	(Chris) 07936 006381 or (Imogen)	07765 887868
<b>Redborne Upper School</b> , Ampt Hill		01525 404462
<b>Robert Bloomfield Middle School</b> , Shefford		01462 628800

# Village groups

Beverley Court	860920
Brownies	<a href="https://enquiryym.girlguiding.org.uk">https://enquiryym.girlguiding.org.uk</a>
Clophill Community Care	Duty Contact 07791 773705
Clophill Heritage Trust	Ali Bradbury 07894 710001
Clophill Preschool	Imogen 07765 887868
	Chris 07936 006381
Clophill St Mary's C of E Lower School & Nursery	Emma Topliff 860206
Clophill Toddler Group	Hannah Compton 07535 705711
Clophill United Charities	Richard Pearson 861110
Conservation Group	Brian Adams 862297
Flower Club	Gillian Hill 860539
Friends of the Cheshire Home	Sue Pearson 861110
Funzone After School Club	07903 167493
Greensands Community Choir	Luke Howard 07975 520085
Indoor Carpet Bowls	Tony Meredith 860754
Messy Church	Victoria Higgins 07920 568861
	<a href="mailto:victoriajhiggins@hotmail.co.uk">victoriajhiggins@hotmail.co.uk</a>
St Mary's PTA	Julia Skelton 07774 993973
Scouts and Cubs	<a href="http://www.scouts.org.uk/get-involved">www.scouts.org.uk/get-involved</a>
Tea and Chat	Anita Errick 860695
Village Hall Booking Secretary	Marilyn Browning 07821 643936

## Kings Windows



Available in a range of traditional colours  
Choose classic joints to look like wood  
Stunning handle options

### TIMELESS FLUSH TIMBER ALTERNATIVE WINDOWS

as seen in *The Old Compasses & The Stone Jug*  
*available exclusively from*  
**Kings Windows**



**10**  
• GUARANTEED •  
**YEARS**



**01582 882 800**  
[www.kingswindows.co.uk](http://www.kingswindows.co.uk)



## Future LuToN expansion consultation: Making best use of our runway

London Luton Airport Ltd is currently scheduled to consult on its expansion proposals from 16 October – 16 December 2019. The proposals will allow the airport to handle up to 32 million passengers a year by 2039, up from nearly 18 million today.

Consultation events will be held across the region – please see [futureluton.llal.org.uk](http://futureluton.llal.org.uk) for further information and updates. Consultation event dates and venues will be published before the consultation begins.

# DAVID JAMES

[WWW.DAVIDJAMESKITCHENS.CO.UK](http://WWW.DAVIDJAMESKITCHENS.CO.UK)



SAVE £££  
BUY DIRECT

Call 01525 722230

## NEW

KITCHEN & LIGHTING  
SHOWROOM

5 MINUTES  
FROM CLOPHILL

DESIGN  
MANUFACTURE  
INSTALL

Pulloxhill  
Business Park  
Greenfield Rd  
Bedford  
MK45 5EU





*Glee*  
Greensand Community Choir  
**LOVE SINGING!**  
sing with an exciting local choir...



Come along to your local **community choir**,  
for men and women of all singing abilities!  
Mondays, 8.00-9.30 pm at St. Mary's Church, Clophill.

- Come and sing with an exciting new local choir led by a professional musical director
- Uplifting music in a variety of styles: musicals, classic pop, folksongs, sacred and world music
- Welcoming singers of all abilities - no audition, no need to read music!
- New members - come along any time for a free taster



Enquiries to:

[greensandcommunitychoir@gmail.com](mailto:greensandcommunitychoir@gmail.com)

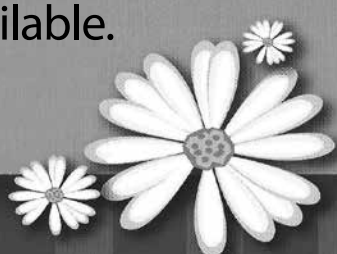
or ring Luke on: 07975 520085

## Daisy Cooper

Spring cleans, one off cleans and  
moving home cleans all available.

[Daisycooper22@hotmail.co.uk](mailto:Daisycooper22@hotmail.co.uk)

Please call 07913 332914



Keeping your home as fresh as a Daisy

## Hypnotherapy...*the Mindful Way*

For help with: anxiety, stress, IBS, migraine mindful eating,  
insomnia & many other conditions. For more information or  
an initial consultation please contact Ann. Tel: 07791171980

Email: [enquiries@pathwaysofmindfulness.co.uk](mailto:enquiries@pathwaysofmindfulness.co.uk)  
[www.pathwaysofmindfulness.com](http://www.pathwaysofmindfulness.com)



**Painter and Decorator**  
**Call Chris : 07950714579**



*do you want your  
home brightening up?*

*all interior & exterior work*

*no job too small!*

*free no obligation quote*

*25 years experience  
& fully insured*

*facebook: @christopherthepainter*  
*email: chris.minihane@btinternet.com*

## **JK Garden and Landscape Services Ltd**



*full landscaping service*  
*patios*  
*fencing*  
*decking*  
*new lawns*  
*driveways*  
*all garden maintenance*

Contact us on **0791 2028254**  
or at **jkgardening@hotmail.co.uk**

You can also find us on Facebook

## **TALKEASY** *Coaching*

***Do you want to make a fundamental  
difference to your life and don't  
know where to start?***

My name is Lynn and I am a Life Coach.

I have extensive experience helping  
with every aspect of life, e.g. support with  
family issues, or your own financial,  
emotional, or physical wellbeing.

My most recent project has been supporting  
young teenagers in their place of education.

Be the change in your life  
and contact me for a free,  
no obligation chat.



**07557948644**  
**01525860384**  
**lynncléments87@gmail.com**



## **Tammys' Talons**

**Nail Technician**  
**Gel. Manicure and Pedicure**

**IZABELHAMMON**  
REGISTERED NAIL TECHNICIAN  
**CALGEL IZ** Champion

**Tammy Kirby**

**Clophill, Bedfordshire, MK45 4AW**

**Tel : 07968379309**

**tammystalons@gmail.com**

# Linda Allsop

PHYSIOTHERAPY



Chartered  
Physiotherapist  
with over 30 years  
experience in both  
the Private Sector  
and the NHS.

Home visits  
available.  
Based in  
Graverhurst

01462 711978 | 07989 257026  
[www.linda-allsop-physio.co.uk](http://www.linda-allsop-physio.co.uk)  
[lindaallsop@btinternet.com](mailto:lindaallsop@btinternet.com)

USING PARABEN & SULPHATE FREE, 100% VEGAN,  
CRUELTY FREE PRODUCTS



## A Cut Above Hairdressing

by Rachel

In the comfort of your own home  
cutting & styling specialist

call or text : 07896009382  
facebook: acutaboverachel

Salon experienced  
Fully insured  
Fully qualified to Level 3 Standard.

## E.T. Accountancy Services

Experienced Chartered Accountant and  
Chartered Tax adviser based in Clophill  
providing a full range of accountancy  
and taxation services to businesses  
and private individuals.

To arrange a free initial consultation  
please telephone me on 01525 590465  
or email [emma@et-accountancy.co.uk](mailto:emma@et-accountancy.co.uk)

Chartered Accountant and  
Chartered Tax Adviser

Emma Thoulass FCA CTA  
[www.et-accountancy.co.uk](http://www.et-accountancy.co.uk)  
01525 590465



## Professional friendly accountancy services

Fully qualified,  
Free initial consultation,  
competitive fees  
Sole traders, Ltd companies,  
bookkeeping, payroll,  
CIS, VAT & Tax.

[sally@sjtax.co.uk](mailto:sally@sjtax.co.uk)  
**01234 831997**  
**07899 808592**

# V.J. EDWARDS

## Plastering & Building Services

Certified Plasterer by British Gypsum – All works guaranteed for 2 years

- *Internal and external Plastering,*
- *Special Renders: Krend, monocuhe and Cemrend*
- *Stud Partitioning*
- *Plaster Boarding*
- *Garage conversions, Kitchens & Bathrooms and small extensions*



**Telephone M: 07970 011605 H: 01234 740400**

Telephone  
**01525  
860526**

## The Stone Jug

**A Free House**  
BACK STREET, CLOPHILL

Despite many protestations from 'the Matriarch', Joyce is still very much at the helm (or so we tell her!). Vikki has been demoted (but she's still here, don't you know!) and Mark has moved into pole position and is doing exceptionally well. We're still very much a family-run village pub with our late dad's saying still ringing true – 'We're a proper pub for proper people'. Cheers!

- 5 real ales, including 2 guest pumps that change frequently (see our Facebook page for details)
- selection of wines and Prosecco by the glass – or even better, by the bottle
- home-cooked lunches Tues-Sat, 12pm-2pm



**REMEMBER OUR MOTTO**  
**"A VISIT TO THE JUG IS BETTER THAN GOING TO A PUB"**  
**CHEERS JOYCE, VIKKI & MARK**

[www.stonejug.co.uk](http://www.stonejug.co.uk)

[www.facebook.com/thestonejugclophill](http://www.facebook.com/thestonejugclophill)



DOULA  
root

MOTHERING THE MOTHER THROUGH

## pregnancy, childbirth & beyond

I offer bespoke practical and emotional support to mothers and families perinatally. Find out how I can protect your birth space and support your journey on your terms.

CONTACT YOUR LOCAL DOULA ROSIE: 07543 280171 [WWW.ROSIECARTERSUSO.COM](http://WWW.ROSIECARTERSUSO.COM)

# OVENCLEAN.

The original oven cleaning specialists

All types cleaned:



- Ovens
- Grills
- Ranges
- Hobs
- AGAs
- Microwaves
- BBQs
- Extractors

Fully insured, and DBS Police Checked

For a quote call Clive direct on:  
**07949 233089** or phone the  
**Office on 0800 840 7127**



[www.ovenclean.com](http://www.ovenclean.com)



Ovenclean Clive Burgess

## Warm Property Services



### Heating



### Plumbing



### Bathrooms



Maulden based. British Gas trained engineer with more than 10 years' experience. Discount for over 60's.

Free no obligation quote & advice.



Boiler and heating installations



Bathroom suites



Power flushing



Plumbing and drainage



Landlord Safety certificates



Fires and cookers

**07716 478794    01525 839342**  
[www.warmprops.co.uk](http://www.warmprops.co.uk)

THE BLUECAT



LUXURY CATTERY

**Tel: 01525 861416**  
[www.thebluecat.net](http://www.thebluecat.net)

Find us on Facebook @thebluecatcattery  
 or email us at [enquiries@thebluecat.net](mailto:enquiries@thebluecat.net)

The Bluecat is a luxury cattery set in the quiet area of Jacques Lane in Clophill. With just 14 cat chalets, we have time to fuss, pamper and play with your cat to its heart's content whilst in our care.  
 Please call for further information.

## Misty Double Glazing?

Over 30 Years experience. FREE Quotes

Over 30 Years experience. FREE Quotes

**KEEP YOUR WINDOW FRAMES...  
 ... WE JUST REPLACE THE GLASS!**

• UPVC • Aluminium • Or Wood

Because we replace just the glass the repair is a  
Fraction of the cost of a complete replacement window.

BEFORE



AFTER



**mistydoubleglazing.co.uk**  
**QUALITY GLAZING SERVICES**

**01525 876808**

**WE ALSO REPLACE BROKEN...**

• Glass • Handles • Hinges & Locks  
**AND REPAIR...Patio Doors & Conservatories!**

# THE SECRET OF GREAT HAIR

The secret of great hair is a great haircut. *By Kevin Reynolds*

Have your hair done in the comfort of your own home.

Free consultations available.

Kevin ran his own salon in the West End of London until he moved to Bedfordshire 15 years ago. Whether you're looking for a re-style, a new colour, original hair ideas, something cutting -edge or something familiar, you'll be safe in Kevin's hands.

Call us now for an appointment

## 07970 467805

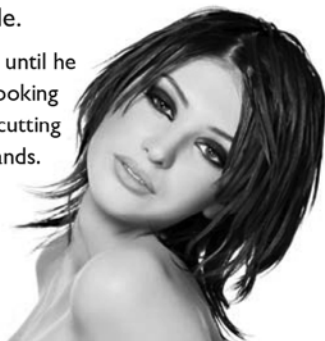
**kevinreynolds**

Hair Stylist



[www.kevinreynolds.info](http://www.kevinreynolds.info)

[reynoldskevin59@gmail.com](mailto:reynoldskevin59@gmail.com)



## Nicola Rayner Fitness

*Feel great in 2019!*

### BOXWORX

Fun, effective pad work based boxing class for a great stress relieving total body workout!

**Wednesday 8-9pm**

**Clophill village hall**

Limited spaces available booking essential

### Pilates & Men's Core Strength

Improved core strength and posture through low impact stretching and spine safe conditioning exercises. Delivered with a positive, caring approach in a fun and friendly environment to leave you feeling energized!

**Classes in Flitton & Silsoe**

Limited spaces available booking essential

Classes also in the surrounding area

**Legs, Bums & tums**

**Zumba**

**Ladies Boot Camp**

For full timetable or to book contact Nicola  
[fitone@live.co.uk](mailto:fitone@live.co.uk) 07801 510988



# be hot!

with  
Slimming World

**TUESDAY**

**Silsoe**

Silsoe Community Sports Centre  
Chestnut Avenue, MK45 4GP  
5:30pm & 7:30pm

Tel / Text: Liz for details  
07973 532793

[slimmingworld.co.uk](http://slimmingworld.co.uk)  
0344 897 8000   



## Welcome to Clophill St Mary's C of E Lower School and Nursery

A small, friendly, Voluntary Aided Church of England Lower School, graded 'Outstanding' by Ofsted, with close links to the local community.

St. Mary's is a Values based school taking children aged from 2 years 7 months to 9 years and providing them with a framework for living, tightly woven into the positive Christian ethos of the school.

Breakfast and after school care for all ages.

## Acorn Nursery

for preschool children aged 2 years 7 months to 4 years with breakfast and after school care available.

Providing 30 hours free childcare entitlement.



**NEW NURSERY BUILDING  
OPEN NOW!**

To arrange a visit, please call us 01525 860206  
or email: [generaladmin@nursery@clophillstmarysschool.co.uk](mailto:generaladmin@nursery@clophillstmarysschool.co.uk)  
For more information visit: [www.clophillstmarysschool.co.uk](http://www.clophillstmarysschool.co.uk)

**We book the household names you know  
and many others besides**



**Whether you want a beach break, a honeymoon, golfing holiday,  
safari trip, escorted tour, or anything besides, just ask us!**

**01234 326778**

24 Mill Street, Bedford MK40 3HD

sales@cruiseselect.co.uk  
www.selecttravelholidays.co.uk  
www.cruiseselect.co.uk



**BOOK WITH CONFIDENCE**  
ABTA & ATOL protected



**ARCHITECTURAL DRAWINGS AND  
BUILDING DESIGN SERVICES**

Professional Architectural design services provided for all types of private residential building projects including extensions, loft/garage conversions, garages and outbuildings through to new build dwellings with all necessary council approvals obtained.

For free estimates and advice contact Steve Coates on Flitwick 01525 862457 or 07960 215053.  
stevecoates72@gmail.com

S & S Coates Surveying & Design, Unit 4 The Courtyard,  
r/o 13 High St, Clophill, MK45 4AB.





# A L & G ABBOTT

F u n e r a l   D i r e c t o r s

~ Established 1832 ~



Christmas, a time for celebrating and spending time with friends and family, but when you have lost someone it can be a lonely and isolating time of year.

So, we wanted to remind you about our Bereavement Listening Service at Abbotts which is entirely free to our families.

Our very experienced and empathetic practitioner Chere will see you at Abbotts and help you through this difficult time.

(This service is available to our families and is by appointment only)

## Tel 01234 843 222



[www.abbott-funerals.co.uk](http://www.abbott-funerals.co.uk)  
[bereavement@abbott-funerals.co.uk](mailto:bereavement@abbott-funerals.co.uk)  
A L & G Abbott, 150 Bedford Road,  
Kempston, MK42 8BH

# AIMS

Tim Kemp BA FCA  
Top Barn Rectory Road  
Steppingly MK45 5AT

TEL/FAX : 01525 717141  
MOBILE : 07900 823 012  
[www.aims.co.uk](http://www.aims.co.uk)  
e-mail: [timk@aims.co.uk](mailto:timk@aims.co.uk)

- ◆ **Professional** service providing for all your accounting and tax needs
- ◆ **Practical** advice based on 20 years experience in **running** businesses
- ◆ **Personal** approach with fixed fees relevant to the work **you** need
- ◆ **Friendly, local** accountant supporting the community for over 20 years

Please call for a free, no-obligation initial meeting

**ACCOUNTANTS FOR *business***

## Hills-Howson Financial Services

Financial adviser appointments available in your home or our office

The Old Post Office  
53 High Street  
Clophill  
Beds MK45 4BE

Tel: 01525 861803  
[www.hills-howson.co.uk](http://www.hills-howson.co.uk)  
[hills.howson@btconnect.com](mailto:hills.howson@btconnect.com)

Including:-

Investments

Pensions

Protection

Annuities



# W&H PEACOCK

AUCTIONEERS & VALUERS

## Weekly Auctions

Visit the Bedford Auction Centre to enjoy the excitement of a live auction.

Antique & Modern Furniture • Clocks • Books  
Ceramics & Glassware • Pictures & Prints  
Bicycles • Jewellery & Watches • Collectables  
Garage Tools & Equipment • Household Electrical Items  
Office Furniture & Equipment • Retail Products & Stock  
Vehicles • Horticultural & Commercial Equipment  
Building Materials • Garden Furniture & Effects

Eastcotts Park, Wallis Way, Bedford MK42 0PE 01234 266 366 [peacockauction.co.uk](http://peacockauction.co.uk)

## THE COMPUTER MAN



Got a problem with your computer and don't know what to do? Suffering with a virus or spam?

**Don't hesitate! Ring your local computer expert**

**Remote repairs or home visits  
(Day, evening & weekend)**

**Lap top/desk top loan  
(Free pick up & drop off in local area)**

Comprehensive health check from £35 (Special Offer £35 - normally £40)  
Refurbished fl at screen available from £15 • Refurbished base units available from £99



Contact Stephen Amos  
**07976 718567**  
[the.computerman@ntlworld.com](mailto:the.computerman@ntlworld.com)





## rincontuition - Spanish & Maths

Expand your knowledge. Boost your confidence

Phone 01525 860743 - Mob 07952 667814

**Exam techniques and preparation. Revision and practice papers: SATs, 11+ and GCSEs**

**Spanish** for business or pleasure, all levels. GCSE & A-levels  
Skills development: conversation, reading and writing

**Maths:** Boost your confidence and abilities

KS1, KS2, KS3, SATs, 11+ and GCSE practice papers.

References available. Reasonable rates

**Enquiries: 01525 860743 - 07952 667814**

**rincontuition@yahoo.com**



## LIZZIE BROWN PET CARE & HORSE GROOM SERVICES



**DOG WALKING  
PET POP-IN & FEEDING  
PET/HOUSE SITTING  
EQUINE GROOM\***



(\*BTEC Cert Equine Management)



**Lizzie Brown 01525 862459 / 07500 989 700**

*Reliable friendly local service*

**Short notice available (no contract commitments)**

**Insured Quality references available CRB checked\***

\*(Disclosure & Barring Service)

# Hairs & Graces

Unisex Salon



Wet Cut £19  
Cut & Blow Dry £30  
Colours start from £27  
Special OAP rates

## Opening Hours:

Monday	9.30-2.00
Tuesday	9.30-5.00
Wednesday	9.30-5.00
Thursday	9.30-8.00
Friday	9.30-8.00
Saturday	9.30-4.00

Zoe, Donna, Gemma  
and Amanda look forward  
to welcoming you.

Ring now to book an  
appointment.  
Appointments also  
available with our Barber.



Burgoine Business Centre, 117 Clophill Road, Maulden MK45 2AE

**01525 861491** • Loads of free parking



## GARDEN DOCTOR

### Rob McLeod

Pruning Specialist

### Professional, Local, Experienced

- \* All tree and hedge work undertaken
- \* High standard of work
- \* Waste material recycled for compost
- \* Free Quotations
- \* Local, reliable service you can trust

**Tel: 07763 239340 or 01525 861568**

**email: [rob@gardendoctor.org.uk](mailto:rob@gardendoctor.org.uk)**

**[www.gardendoctor.org.uk](http://www.gardendoctor.org.uk)**

*Call the Garden Doctor and bring Good Health to your Garden*



Hedging & Pruning  
Shrubs & Fruit Trees  
Tree Surgery & Removal  
Fully certificated and insured



## We'll get you up and running!

We offer the very best physiotherapy care from a friendly approachable team of nine highly trained Chartered Physiotherapists all members of the Health Professionals Council

**Expert treatment including:**

- Neck/Back/Hand and Tennis Elbow Pain
- Headaches/Migraine/Sciatica
- Incontinence/Pelvic/SIJ/SPD/Pregnancy Back Pain
- Sprains/Strains/Torn Ligaments
- Whiplash/RSI/Osteoporosis/Sports Injuries

**Specialist Physiotherapists:**

- Neurological, Paediatric, Vertigo and Dizziness

**We also offer complementary treatments:**

- Acupuncture, Reflexology, Massage, Indian Head Massage, Chinese Herbalist, Lymphatic Drainage and Pumps



Tel: 01525 720882 [www.chartered-physiotherapy.co.uk](http://www.chartered-physiotherapy.co.uk) Email: [amphillphysio@btconnect.com](mailto:amphillphysio@btconnect.com)

7 Station Square, Flitwick, MK45 1DP



## The Happy Place.co.uk

On the Green beside the Post Office every Friday, 3.30-7.30pm

We are your local mobile fish and chip van, we have been parked on the green every Friday for the past 6 years. We serve only the highest quality produce, cooked fresh to order and served to you by our friendly staff.

Why don't you pop down and come and Try Our Fry!

To avoid waiting in the cold, give us a call to

**place your order on: 07833 786108**

A big thank you to all our customers who have loyally supported us over the past couple of years.

# Chapman & Kirby Heating

**Gas, Plumbing & Heating Installations**

**Gas Safe Registered**

**Boiler Servicing & Maintenance**



**Call us now**

**Tel: 01525 861255 Mob: 07831 132308**

**Email: [info@chapmanandkirbyheating.co.uk](mailto:info@chapmanandkirbyheating.co.uk)**

1C, Old Silsoe Road, Clophill, Beds., MK45 4AR



# NEVILLE FUNERALS

We take care of the details, so you can say  
goodbye the way you want to.

NEVILLE. Because there is a difference.

## AMPTHILL

The Old Church, Flitwick Road MK45 2NT

t: 01525 406132

e: [ampthill@nevillefuneralservice.com](mailto:ampthill@nevillefuneralservice.com)

---

## SHEFFORD

24 Clifton Road SG17 5AE

t: 01462 813258

e: [shefford@nevillefuneralservice.com](mailto:shefford@nevillefuneralservice.com)

[www.nevillefuneralservice.com](http://www.nevillefuneralservice.com)








If you've been thinking about enjoying a great lawn this year – green, lush and weed-free, why not contact us today and let us bring your lawn to life.

We provide four seasonal treatments, as well as beneficial treatments to keep your lawn in tip-top condition - prices start from just £5\* per month.

PRICES FROM  
**£5\***  
PER MONTH

Ask us about our annual plans, which allows you to both spread the cost and save up to 25%.

**GreenThumb**  
LAWN TREATMENT SERVICE

Simply call: 01234 709345 or  
visit: [greenthumb.co.uk](http://greenthumb.co.uk)   

\*Based on a lawn size of 40m<sup>2</sup>

Baths, Toilets &  
Showers  
Sinks and Taps  
Guttering  
Leaks and Burst Pipes  
Drainage  
Handyman jobs also



Silsoe based  
No call out fee – free estimates  
Fully insured and guaranteed  
No job too small  
**07720 723653 01525 864859**  
[info@betaplumbing.co.uk](mailto:info@betaplumbing.co.uk)  
[www.betaplumbing.co.uk](http://www.betaplumbing.co.uk)

**Washing Machines Dishwashers  
Dryers Electric Ovens  
Repairs Servicing Sales**



A local family business offering  
a quality service at a competitive price  
Est. 1981

**Tel: CLOPHILL 860148  
or Tim Downing direct on 07969 545 276**

A member of the White Goods Trade Association  
Fully Insured



the  
café

AT

**W&H PEACOCK**  
AUCTIONEERS & VALUERS

Visit

[www.peacockscafe.co.uk](http://www.peacockscafe.co.uk)  
for more details and to view  
our current menu.

Eastcotts Park, Wallis Way,  
Bedford, Bedfordshire  
MK42 0PE

**01234 266 366**



**View the salerooms for our upcoming auctions  
and then relax with a coffee and a slice of cake.**

Our unique café in Bedford Auction Centre with free wi-fi and  
views of the salerooms, comfortably seats over 100 customers.

We serve cooked breakfasts, paninis and sandwiches, light  
lunches and snacks plus a range of hot and cold drinks.

**Senior Citizen discounts available**

Open Monday to Thursday from 8.30am - 3.30pm  
Extended opening on Friday to 7pm. Saturday 8.30am - 4pm  
(Last orders 1 hour before closing)

## LOCAL ALLOY WHEEL REFURBISHMENT

  
**mintalloys**  
complete alloy wheel refurbishment

**Tel:**  
**01525**  
**860069**

**Alloy Wheel Repairs**

**Diamond Cut Alloy Wheels Repaired On Site**

**Powder Coat Primers & Lacquers**

**Fast Turnaround Alloy Wheel Welding**

**Tyres At Competitive Prices**

**NEW for 2015 - 4 Wheel Alignment Service**

**[www.mintalloys.co.uk](http://www.mintalloys.co.uk)**

# Root 'n Branch

Your Local Friendly & Reliable Gardener

All aspects of Garden Maintenance undertaken  
• PRUNING • MOWING • WEEDING • PLANTING • HEDGING

Southfields, Shefford  
email: whooley@hotmail.co.uk

**Tel: 07771 537385**

Public Liability  
Insured

*Conifer*  
Kennels

Quality  
BOARDING  
DAY BOARDING  
HOLISTIC FOOD SHOP  
GROOMING & GOING HOME BATHS  
OFF SITE NATURE WALKS  
QUALIFIED TEAM



**NUTRIMENT**  
ENHANCED raw diet formula

[www.coniferkennels.co.uk](http://www.coniferkennels.co.uk) 01525 860339



The Causeway, Clophill, Beds. MK45 4BA

**Akela**

WILD WASH

**YAKERS**



*Eden*  
Holistic Pet Foods

**GREEN & WILDS**  
Naturally for pets

Pre-Order  
Service Available

## STUART DREW ELECTRICAL SERVICES

MEMBER OF THE ECA  
PART P CERTIFIED QUALIFIED TO 18TH EDITION

From extra lights & sockets, to re-wires. Fault finding and electrical safety certification. For a professional, courteous service with free estimates & all work guaranteed, please call me

29 Lincoln Way  
Harlington  
Beds  
LU5 6NG

**Fully qualified & insured**  
**30 years experience**

Telephone:  
01525 875965  
07941 812662



## Compu-Doc

PC / laptop crisis ?

01525-402227

Call the Doc for -

Hardware & software

Diagnosis & treatment

[john.stafford@compu-doc.co.uk](mailto:john.stafford@compu-doc.co.uk)

# BURGLAR ALARMS

*New Alarms Fitted or Upgrade Existing Alarms*

## BURGLAR ALARMS

We fit New Alarms - Wired or Wireless Systems  
\*We can service and maintain your existing alarm\*

## CCTV

We fit high quality systems to maximise your security.  
Access your CCTV via the internet or mobile.

## DOOR ENTRY

We fit a range of quality video and audio intercoms  
to suit your needs.

*We are a family run business with over 35 years  
experience in home security and crime prevention.*



[www.maximumsecuritysystems.co.uk](http://www.maximumsecuritysystems.co.uk)

Contact:

**01582 864138 / 07746 111520**

*For a free quote and consultation*

# McCaffrey

Your local resource for residential  
build, refurbishment and maintenance



General building works

Extensions

New builds

Internal refurbishment/alterations

Brickwork

Carpentry

Painting & decorating

Purpose made joinery

Plumbing and heating

Electrical installations

UPVC windows & doors

Garage conversions



call us to discuss your building requirements

**01525 861041**

€ [info@mccaffreybuild.co.uk](mailto:info@mccaffreybuild.co.uk) W [www.mccaffreybuild.co.uk](http://www.mccaffreybuild.co.uk)

# ADAM IN YOUR GARDEN

**TREE SURGERY, HEDGE TRIMMING,  
TURFING, FENCE MAINTENANCE,  
DECKING, PATIO CLEANING**



Qualified, Fully Insured, Competitive Rates  
Free Estimates

**TEL: 01582 518954 MOB: 07828 490360**

**Web Site: [www.adaminyourgarden.co.uk](http://www.adaminyourgarden.co.uk)**

**Based near Toddington, Bedfordshire.**

**We rescue, rehabilitate & re-home stray & abandoned cats.**

**We have lots of beautiful cats waiting for loving homes.**

**Ring the shelter on 01525 875993**

**or Sue on 01582 650167 to arrange a visit.**



**Registered Charity No. 1098984**

**Visit our website @[www.straycatrescue.org.uk](http://www.straycatrescue.org.uk)**



- Suppliers of traditional and modern equipment
- Working whirlpool & spa baths, power & steam shower systems on display
- Over 40 settings on display
- Complete installation service if required
- Personal friendly service from a family run business
- Wall and floor tiles
- Accessories
- Mirrors
- Bathroom furniture
- Heated towel rails
- Saunas
- Bathroom cabinets

**SHEFFORD 01462 627002**

**[www.bathroomvogue.com](http://www.bathroomvogue.com)**

Unit 4A, Shefford Industrial Park, St Francis Way, Shefford SG17 5DZ

## Hire Clophill Village Hall



Wedding Receptions  
Birthdays & Special Occasions  
Dances and Discos  
Club & Community Meetings & Activities

Phone: 07821 643 936

Mail: [Clophill.villagehall@gmail.com](mailto:Clophill.villagehall@gmail.com) Web: [www.clophillvillagehall.co.uk](http://www.clophillvillagehall.co.uk)

## ROGER STOREY

**YOUR LOCAL PAINTER AND DECORATOR**

Friendly and Reliable Service

Many Years Experience

Please phone: **01525 861253** or **07800 777615**

## ANDREW BAKER WINDOWS

9 SHEFFORD ROAD  
CLOPHILL BEDS  
MK45 4BT

SPECIALISING IN UPVC WINDOWS,  
DOORS, CONSERVATORIES,  
FASCIA, SOFFITS, GUTTERS AND  
CLADDING. ALSO AVAILABLE FOR CARPENTRY  
WORK. NO JOB TOO SMALL OR LARGE.

20 Years experience.  
Free local quotes.

**FENSA**

Fensa Registered  
FIVE YEAR GUARANTEE

Contact Andrew: 01525862804 / 07825017855

Email: [abakerwindows@gmail.com](mailto:abakerwindows@gmail.com)

# Advertisers index

<b>Airports</b>		<b>Food and Refreshments</b>		<b>Pet &amp; Animal Services</b>	
London Luton Airport	22	The Cafe at Peacocks	39	Conifer Kennels & Cattery	40
<b>Architectural Services</b>		The Happy Plaice	36	Lizzie Brown Pet Care	34
S&S Coates Surveying & Design	30	<b>Funeral Services</b>		Stray Cat Rescue	42
<b>Auctioneers &amp; Valuers</b>		AL&G Abbott, Funeral Directors	30	The Bluecat Luxury Cattery	27
W&H Peacock	33	Neville Funeral Service	37	<b>Plumbing &amp; Drainage Services</b>	
<b>Bathroom Services</b>		<b>Garden Services</b>		Beta Plumbing	38
Bathroom Vogue	42	Adam in your Garden	42	Chapman & Kirby Heating	36
<b>Builders &amp; Carpenters</b>		Garden Doctor	35	Warm Property Services	27
McCaffrey Build	41	Green Thumb Lawn Treatment	38	<b>Print Services</b>	
Stuart Benson Building Projects	IFC	JK Garden and Landscape Services	24	Fidelity Design & Print	IFC
VJ Edwards	26	Root 'n Branch	40	<b>Public Houses</b>	
<b>Car Services/Repairs</b>		<b>Health &amp; Beauty</b>		The Stone Jug	26
A&F Motors Ltd	IFC	A Cut Above Hairdressing	25	<b>Repair Services</b>	
Mint Alloys	39	Ampthill & Flitwick Physiotherapy	36	Tim Downing Repair Services	38
TC Coomber Car Services	BC	Doula Root	26	<b>Security Services</b>	
<b>Chimney Sweep</b>		Hairs & Graces	35	Maximum Security Systems	41
Poppins Chimney Sweep	IBC	Kevin Reynolds	28	<b>Travel Services</b>	
<b>Cleaning Services</b>		Linda Allsop Physiotherapy	25	Select Travel Holidays	30
Daisy Cooper	23	Nicola Rayner Fitness	28	<b>Tuition and Coaching Services</b>	
Ovenclean	27	Pathways of Mindfulness	23	Rincon Tuition (Spanish & Maths)	34
<b>Computer Services</b>		Slimming World	29	TalkEasy Coaching	24
Compu-Doc	40	Tammys' Talons	24	<b>Village Hall</b>	
The Computer Man	33	<b>Home Improvements</b>		Clophill Village Hall	43
<b>Electrical Services</b>		Christopher The Painter	24	<b>Windows/Replacement</b>	
Stuart Drew Electrical Services	40	Roger Storey - Painter & Decorator	43	Andrew Baker Windows	43
<b>Financial Services</b>		David James Kitchens	22	AW Windows	IBC
AIMS Accountants	32	<b>Music and Entertainment</b>		Kings Windows	21
ET Accountancy Services	25	Greensands Community Choir	23	Misty Double Glazing	23
Hills-Howson Financial Services	32	<b>Nursery Schools</b>		<b>IFC = Inside Front Cover IBC = Inside Back Cover BC = Back Cover</b>	
MB Accounting Services	44	Clophill PreSchool	BC		
SI Tax & Accounting Services	25	Clophill St Mary's C of E			
		Acorn Lower School and Nursery	29		

# MB

# ACCOUNTING SERVICES

accounting solutions for the  
**Self-Employed** and **Small Business**

including

**HMRC tax returns • Accounts • Bookkeeping**

For a totally confidential service at **very competitive rates** contact  
**Richard Fairholm T: 01525 861087 M: 07714189994 E: [mbaccounts@btinternet.com](mailto:mbaccounts@btinternet.com)**



# Poppins Chimneys

**Chimneys Swept  
Wood and Multifuel Stove  
Installation & Liners**

*Great Service - Great Price!*



**01525 860424 or 07858 688785**  
**mark@poppinschimneys.co.uk**

**NO PRESSURE SALES – YOU DEAL WITH  
THE OWNER FROM START TO FINISH**



- ✓ A-rated windows as standard
- ✓ Composite doors
- ✓ High security
- ✓ Bifolding doors
- ✓ Conservatories
- ✓ Fascias, soffits and guttering
- ✓ Insurance-backed guarantee
- ✓ Fensa certificate



**Contact: ANDY WOOD**

**01582 536944 or 07796 272539**  
**sales@awwindows.co.uk**



See reviews from satisfied customers at [awwindows.co.uk](http://awwindows.co.uk)

# Clophill Preschool

Your local Outstanding Preschool,  
based at Clophill Village Hall -  
welcoming children from  
2 years of age.

We'll help your child to become an inventive  
and creative learner. With access to a fantastic  
outdoor area, our focus is on natural and  
exploratory 'play with a purpose'.



Call us today to find  
out more:  
**07765 887868** or  
**07936 006381**

[www.clophillpreschool.co.uk](http://www.clophillpreschool.co.uk)



**TLC Toombers**

**MOT'S CLASS 4/5L/7  
CAR SERVICING & REPAIR  
TYRES & EXHAUSTS  
AIR CONDITIONING  
DIAGNOSTIC CODE READING**

**Collection  
& Delivery**  
SERVICE AVAILABLE  
Please ask

**AMPHILL**  
**01525 406330**

UNIT F, AMPHILL INDUSTRIAL ESTATE, STATION ROAD, AMPHILL, MK45 2QY