

Vol 42 | No.1

FREE

# CLOPHILL SPOTLIGHT

FEBRUARY 2020

**LOVE YOUR  
LOCAL NEWS**

# AMPTHILL PRINT CENTRE

**DIGITAL PRINTING  
DESIGN & MARKETING  
DIRECT MAIL**

*and much more...*

...and we're right on your doorstep at

Unit 24 Station Road Ind Est, Ampthill, MK45 2QY  
(Just off the A507 Ampthill bypass, past the Post Office)

#### WE PRINT...

- Stationery
- Newsletters
- Menus & Tent cards
- Brochures
- Flyers & Leaflets
- Catalogues
- Books & Booklets
- Direct mail
- Training Manuals
- Banners & Posters
- Greeting cards
- Calendars
- Labels & Stickers
- NCR pads
- Folders
- Exhibition panels
- CD/DVD duplication
- Photocopying

3 DAY STANDARD SERVICE | SAME DAY AVAILABLE

[www.fidelityprint.co.uk](http://www.fidelityprint.co.uk)

Get a quote 01525 300001 [quotes@fidelityprint.co.uk](mailto:quotes@fidelityprint.co.uk)

**fidelity**<sup>®</sup>

Unit 24 Station Rd Ind Est, Ampthill



## MOTORS LTD

**Tel: (01525) 860292**

**Tel: (01525) 404919**

**208 Clophill Road, Maulden, Bedfordshire MK45 2AF**  
**89 Oliver Street, Ampthill, Bedfordshire MK45 2SA**

**CAR AND COMMERCIAL VEHICLES  
ALSO CLASSIC & AMERICAN CARS  
SERVICING – REPAIRS – BREAKDOWN  
SPRAYING – M.O.T.**



### **Stuart Benson Building Projects**

**Design, Build and Maintenance including Interior Refurbishments,  
Kitchen / Bathroom fitting, Tiling, Flooring, Skirting boards, Doors  
Garage conversions. Exterior Decking, Patios, Driveways  
Garden Offices/ Sheds**

**Tel: 07946 579862 or 01525 403083**

**Email: [benson.stuart@.googlemail.com](mailto:benson.stuart@.googlemail.com)**



## **The magazine staff**

EDITOR	Elaine Jones editorial@clophillspotlight.co.uk	07918 975823
ADVERTISING MANAGER	Emma Frost ads@clophillspotlight.co.uk	
DESIGN MANAGER	Chris Abrahams cmabrahams@yahoo.co.uk	
DISTRIBUTION MANAGER	Pete Liddle	860113
TREASURER	Richard Pearson	861110

***Deadline for articles is 20th of the month***

You can also read Spotlight online  
**[www.clophillspotlight.co.uk](http://www.clophillspotlight.co.uk)**



# SAVE YOUR SPOTLIGHT

## **New Design Manager wanted for your local village magazine**

After 7 years, Chris is stepping down, so we are looking for someone to take over as our Design Manager.

The role requires about 8 hours of your time each month. Knowledge of either the Adobe Creative Suite or Microsoft Publisher is needed, or the desire to learn one of them!!

*Can you help?*

For more information please contact Elaine on  
**07918 975823** or **editorial@clophillspotlight.co.uk**



**Going...  
going...  
gone?**



Spotlight relies on volunteers to keep going.

Sadly, if this key role can't be filled then Spotlight will have to close and there will be no more village magazine.

**If you don't want to lose your village magazine  
– please think about whether you can help.**

# Clophill Preschool News

***Welcome to 2020 and we hope you all had a fun and safe festive season.***

We ended last term with yet another very successful Christmas Craft morning. The hall was a hive of crafting activity with people visiting from Clophill and beyond, even Santa showed his face!

We sang at the Methodist Carol Service, had Christmas dinner in Preschool, joined St. Mary's church for Christingle, made bird feeders, visited Badger Hill to get our Christmas tree and transported it home, planted and decorated it; hosted a busy wreath making session and had our Nativity! We held our Nativity on a Saturday morning to allow everyone the chance to come and see it and as usual we had a room full to bursting with parents and families. The children were fantastic with everyone taking part, singing and signing and joining in yet another Nativity rewritten by us. We would like to thank Rev Silas for coming up to see it, he gave us a great review! Staff were fabulous, working so hard to make it a very precious event,



thank you team. Thanks also to the Eco-lodges and Carley & Kia's Body Shop for both donating a prize.



Goodness, right all the 'thank you's' over and it's time to look forward! Oh no...hang on...a massive thank you to Stella, who is always thinking of us when she has an empty cardboard box or similar. This time she gave us a HUGE empty wasps nest from her loft, the children were fascinated to explore this amazing object, they couldn't quite believe it had been a home and that the wasps had actually made it themselves. Thank you, Stella.

So, what are we up to this year? Well Chris will finish her Forest school training, she has already bought her Kelly kettle and tried out some great outdoor recipes. We have liberated some pallets that will be the seating area for our new outdoor library as well as the platform for our outdoor stage. We hope Spotty and

Dotty, the hens, will start to lay eggs as the weather warms up and we will be digging over the allotment, enriching the soil and planning what to grow next.

Many of you will have seen the new design website, we hope you like it. We think we have some fantastic photos on it that really show people what we are all about. We are also very proud at becoming well known for being an inclusive setting that has made its name as being very accomplished at welcoming and supporting children with additional needs. We are standing out as a preschool that isn't afraid to go out in the rain, to use the outdoors as our teacher, and allow children to learn through a wealth of real-life experiences. Onward and upward into 2020 as we welcome more new children to our preschool.

PS: Please check out our newly updated website [www.clophillpreschool.co.uk](http://www.clophillpreschool.co.uk)

## Friends of St Mary's Church Clophill

invite you to join them for a talk relating to behind the scenes experiences by  
a former Butler to the Duke and Duchess of Bedford

### ***"How to Run a Stately Home by Simon Pestell"***



Simon has had many years' previous experience in other Stately Homes and has numerous stories - not only of how to do things correctly - but also perhaps when things might have gone a tad awry. It will be a fascinating and amusing evening!

**St Mary's Church, Clophill**  
**Friday 28<sup>th</sup> February 2020 doors open at 7.30pm**  
**and the talk will start at 8pm**  
**Tickets £12.50 including refreshments**

*Please watch for posters around the village  
for more information during February*

## **Clophill United Charities are seeking a new Clerk**

The Trustees of Clophill United Charities (CUC) are seeking a new Clerk. The current Clerk is stepping down but will remain living in Clophill so will be available to ask for help, if required. This might suit someone retired but is available to anyone interested in helping this worthwhile local Charity.

The Trustees have three scheduled meetings in the year held in the early evening, generally in March, June and October but these dates can be adapted if they clash with holidays. The position requires the Clerk to be able to prepare documents to send out with the Agenda, undertake follow up correspondence plus distributing the Minutes to the Trustees. Also keep financial records up to date and produce an accounts balance sheet at the end of the year ready for the Auditor. Familiarity with computer systems is essential as most of the communication within CUC is by email, financial details are recorded on an Excel spreadsheet and other documents on Word. You will be the contact point for anyone seeking assistance from our Charity. There is an honorarium paid to the Clerk.

For more information or to discuss the position, please contact:  
***Richard Pearson, Chair of the Trustees on 01525 861110***

# Christmas at St Mary's Church



As usual the church was packed for the annual candlelit service on Christmas Eve to hear the Christmas story in the traditional 9 Lessons and Carols. The congregation sang lustily in the general carols which were supplemented by 3 items from the choir. Especially appreciated was the contribution from the 14 children and teenagers. We at St. Mary's are very grateful to all who gave their time either to sing in the choir or to read one of the lessons.

The collection for the King's Arms Church Project for homeless people in Bedford **raised a magnificent £350**. Thanks to all who gave so generously.

## Clophill Heritage Trust Update

We would like to thank everyone who took part in our village survey at the end of last year to identify additional heritage projects that they would like to see in the village. The results were clear with 85% of respondents voting for additional interpretation signs at old St Mary's Church and an investigative project to look into uncovering the ancient footings of the old chancery chapel. 60% also voted for interpretation of the History on our High Street leaflet, into a Victorian garden in the pound on the Village green. We will now start to scope these projects and will keep you updated!

Our 2020 events list is now complete and we have more Pamper Evenings, Foraging Workshops plus new for this year some introduction to herbal medicine classes. For the younger ones we have the Teddy Bear Hunt back and a family foraging day in the May half term. Our Pumpkin Festival falls on Halloween this year and so we are planning something very special! All tickets are available online, so book now at [www.clophillecolodges.co.uk/events](http://www.clophillecolodges.co.uk/events) or call us on 07935 911207.

Remember that The Eco Lodges and the ruins of old St Mary's church can be hired out for private events and photo shoots. We already have weddings, birthday parties and a naming ceremony booked in for next year so think of us if you are looking for a beautiful, unique venue for your event.

If you would like to know more about us and what we do, or volunteer to be a helper please contact either Emily or Louise on 07935 911207 or email [info@ClophillEcoLodges.co.uk](mailto:info@ClophillEcoLodges.co.uk)

*The CHT Team*

### NEXT EVENTS: APRIL

12th Easter Sunrise Service  
19th Animal Encounter  
25th Earth Day Open Day

### MAY

2nd Spring Foraging Workshop  
15th Prosecco & Pamper Evening  
17th Spring Foraging Workshop  
25th Countryside Crafts Cafe  
23rd Spring Foraging Family Workshop  
28th Teddy Bear Hunt

For info call 07935 911207 or email [info@clophillecolodges.co.uk](mailto:info@clophillecolodges.co.uk)  
[www.Facebook.com/ClophillEcoLodges](https://www.Facebook.com/ClophillEcoLodges)

**Clophill Village Hall Presents**  
**A NIGHT OF ROCK 'N' ROLL WITH**

# **Rockin' the Joint**

**Saturday 14th March**



**Rock 'n' Roll DJ**

**Large Dance Floor**

**Fully Serviced Bar**

**Ample Free Parking**

**11th July**

**Downtown Daddy's**

**12th September**

**The Bobcats**

**28th November**

**Bamboozle**

**AND A NIGHT OF SKA WITH**



For Tickets & Info Call Steve  
on 07831255807 or email  
[steve.langhorn@gmail.com](mailto:steve.langhorn@gmail.com)

**£10** ADV  
**£12** OTD

**CLOPHILL VILLAGE HALL**  
**BEDFORDSHIRE**  
**MK45 4DA**

**Visit our Facebook page 'Clophill Village Hall' for event updates**



# Clophill & District Flower Club

2019 has been another successful year for the Club as our membership has increased to 82, so there is always a lively and friendly atmosphere at our meetings. We have an excellent Committee who organise activities and trips for the members as well as monthly flower demonstrations.

The festive season began with a trip to Waddesdon Manor to see the house decorated for Christmas. Each room was on a different theme and the trees, lights and decorations were lovely. Outside there was a Christmas market in little wooden chalets and when it got dark the lights went on all around the house and garden with beautiful installations

to walk around. Our trips are always popular and this was one of the best.

In December we really got into the Christmas spirit with a superb demonstration by Nigel Whyles from Telford. His designs were all excellent as each one was different with a large variety of flowers and seasonal foliage. He played

appropriate music as he completed each arrangement and by the end, his title 'Deck the Halls' was perfect, as the stage at the Village Hall was decked to capacity with colour,

styles, Christmas accessories and flowers. The lucky raffle winners had something special to take home, as long as the arrangement would fit in their car.

We have another programme of events and demonstrations planned for 2020, another year of Friendship, fun and flowers.

*Carolyn Cranswick, Chairman of Clophill and District Flower Club*



**CLOPHILL METHODIST CHURCH**



## BEETLE DRIVE

**Saturday 7th March, 6.30pm**

**Adults £5, children £2.50**

**Refreshments**



**In aid of Clophill Methodist Church**

**Tel: 01525 860695**





Bedfordshire  
Cambridgeshire  
Northamptonshire

## Wildlife walks & talks



### **Ampthill's Secret Nature Reserve**

***An insight into the funding and management of a little-known wildlife site in Ampthill. A talk by Nigel Pollard.***

**Monday 16th March, 7.45 pm, Maulden Church Hall**

Many will know Nigel from his long-time involvement with the Flit Vale Wildlife Watch Groups. This talk is not about the Wildlife Watch Groups, but about a thriving and hidden area of nature in Ampthill that many may not be aware of. Join Nigel as he guides us through Ampthill's Secret Nature Reserve. **Open to all. £3 per adult**

For bookings or additional information please email [flitvale.info@gmail.com](mailto:flitvale.info@gmail.com) or ring Ann on 075801 78889 between 6pm and 8pm or at weekends.

## **Blunham's Big Book Sale**

**Saturday 22nd February 2020 10:00am to 3:00pm**

Come and browse and buy at our Big Book Sale in Blunham Parish Church.  
St Edmunds or St James, Park Lane Beds MK44 3NQ.



Huge selection of nearly new books, homemade cakes, teas and coffees, homemade soup and a raffle. All proceeds to Blunham Church Fabric Fund. *For more details ring Sue and Peter on 01767 640572.*



## **History of the Pathfinders Squadron**

**Monday 2nd March 2020**



What sort of men were the Pathfinders, the corps d'élite of Bomber Command? What did they do? What risks did they face? And what contribution did they make to the air war and the ultimate defeat of Germany. *Speaker: Author Sean Feast*

***Visitors are very welcome!***

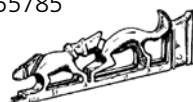
**Lecture Theatre, Flitwick Library MK45 1QJ**

7.30 for 7.45pm. £2 for members and £3 for visitors, payable on the door.

Further details: [clive.makin@ntlworld.com](mailto:clive.makin@ntlworld.com) Tel: 01582 655785

**[www.adalhs.org.uk](http://www.adalhs.org.uk)**

**Ampthill & District Archaeological & Local History Society**



# St Mary's School News



Back in December KS1 and KS2 presented their **Christmas Play, "Lights, Camel, Action: The Sequin"** to their families and residents within the village. Reception children performed **'The Nativity'** in the school Church service on the last day of the Autumn Term, and Reception and Nursery beautifully sang **Christmas Carols** for parents and carers. Also our Year 4 children attended Beverley court to sing Carols for the residents and enjoyed talking with them. In December as well, Reception, KS1 and KS2 attended the **pantomime, Aladdin**, at Milton Keynes Theatre. The children had their Christmas dinner at school where all staff helped to serve their meals. They also had a very special visit from a man in a red suit!

During Autumn Term we took part in a number of fundraising activities, many led by our school council, and raised money for; Jeans for Genes, Children in Need, Keech Cottage Hospice, The Children's Society and Save The Children. During January we were lucky to be visited by a **dance teacher** who taught Reception through to Year 4 children a variety of dances. The children had a wonderful time and learnt some fantastic routines. Some of our children represented the school at a **Gymnastics Festival** in February. They had great fun participating and put a lot of practice into their routines. Also, some of our Year 4 children attended a sporting event at Robert Bloomfield Academy.

## Our value for February is *Creation (Quality)*

We will be considering how, in order to achieve something of quality, you must do something to the best of your ability, using the best materials or best thoughts you have. We will be teaching the children that quality thoughts lead to quality words; quality words lead to quality actions. We will also be spending time thinking about our appreciation of quality and making sure that we take care of the world God created for us. At home, we invite you to reflect on quality you see every day and consider what makes it so. We will as well be suggesting to the children that they try and do everything they do outside of school with quality.

## Acorn Nursery News

Our Nursey are an integral part of the school, where we start Values Education from an early age and teach the Early Years Foundation curriculum through continuous provision resources, adult led activities and child initiated learning. It offers a great opportunity for transition into school life.

We welcome children from 2 years 7 months to 4 years into our nursery, and offer 15 and 30-hour funding, with no minimum or maximum number of sessions a child can attend.

Following our successful **stay and play sessions** held in the last summer term we will now be holding these on termly basis and the next date will be **Monday 2nd March 2020**. More information will be sent out via the School's Facebook page, [www.facebook.com/clophillstmarysschool](https://www.facebook.com/clophillstmarysschool) as well as being added to the School's Website, [www.clophillstmarysschool.co.uk](http://www.clophillstmarysschool.co.uk).

If you would like to visit the nursery, or find out more information then please contact Mrs. Hayes, Nursery manager at [nursery@clophillstmarysschool.co.uk](mailto:nursery@clophillstmarysschool.co.uk) or by calling the main School number, 01525 860206.



# Clophill Village Hall

**A very big thank you** to the residents of Clophill for coming out to see Santa and supporting the Village Hall. **We raised just over £700** which allows us to continue presenting a high standard of facilities

for the users of our fantastic hall.

We would also like to say an extra thank you to Pete Sharpe and all of our volunteers who gave up their Sunday afternoon to help us knock on doors and spread the Christmas cheer.

We have a great line up of events for 2020 so we hope to see some new and familiar faces next year.



## Ampthill Community Safety Group

**Ampthill Community Safety Group (ACSG)** the group of local volunteers that represents the townsfolk and villagers of Ampthill, Maulden & Clophill met for their AGM on the 7th January and ex Clophill Parish Councillor and resident of Clophill Paul Downing was elected Chair for the coming year. The meeting was attended by representatives from Bedfordshire Police and Fire and CBC Ward Councillor Mark Smith. The Group is working with the blue light services, local councils and CBC in problem solving community safety issues across the electoral ward of Ampthill. Thankfully Clophill is a peaceful and relatively crime free village but there will be benefits in other volunteers stepping forward to help create Bedfordshire Police accredited Street and Neighbourhood Watch Schemes.

ACSG meets at Ampthill Fire Station bi-monthly (every two months - next on 3rd March at 6.15pm) and now has a Steering Group that includes leads for Administration, Communications, Recruitment and Partnerships. Central Bedfordshire Council recognises the Group as a partner organisation.

For more information contact Paul Downing on 860350.

# Come into the Garden

with *Kate Gardner*



February feels like a turning point in the garden. It's still cold outside, but there are signs of spring's imminent arrival everywhere you look. Bulbs are slowly emerging from the ground, and the days are getting longer at last.

This month's garden jobs are mostly about getting things ready for the spring with lots of pruning and tidying to get the garden ready for its best spring ever.



If you have a **wisteria** now is the perfect time to be cutting back summer side-shoots to 2 or 3 buds which will keep the plant in shape and stop it from becoming too leggy. Cornus (dogwoods) and Salix (willows) which have been gracing the garden with their colourful stems all winter are should also be pruned down to the base during the month.

Prune summer-flowering clematis such as **Clematis 'Snow queen'** towards the end of the month, before active growth begins.

These large flowered **Group 2 clematis** bear flowers on new shoots which grow from the previous year's stems. Although they bloom during the late spring and summer, some cultivars also produce a second flush at the tips of the current year's growth in late summer and autumn. Prune your large flowering clematis during the spring, when the plant is still dormant. Remove any damaged, dead or weak stems, cutting back to a pair of healthy buds. Avoid heavy pruning at this stage as you may get less early flowers. February is also the time to prune overgrown plants to reduce their size, something which is best done a little at a time over several years.

Late flowering varieties and their cultivars are clematis that bloom from summer to late autumn on the current year's stems. This group also contains the herbaceous clematis species.

If you grow the **Group 3 late flowering clematis** such as **Clematis 'Jackmanii'** then these are the easiest to prune. Simply cut your late-flowering clematis back to a pair of strong buds about 20cm (8") above the ground in spring before they start into active growth. This looks very drastic but the flower buds are produced on this year's growth Give them a feed and a mulch to set them up for plenty of flowers later in the year.

Cut back the old foliage from ornamental grasses before growth begins. Clip them to within a few centimetres of the ground or just above the new shoots if they have already started to show through.

Once your **winter flowering jasmine** (*Jasminum nudiflorum*) has finished flowering, give it a gentle prune to encourage new growth for next year's blooms. Cut back the previous year's growth to 5cm from the old wood. Trim winter-flowering heathers too once the flowers disappear, to prevent plants becoming leggy.

Winter-flowering shrubs such as **mahonia** and **viburnum x bodnantense** should also be pruned once their colourful display has finished. Certain evergreen shrubs require a harder prune to increase flowering or to maintain their attractive shape. Examples include groundcover such as **Mahonia aquifolium** and **Hypericum calycinum** which look best sheared over in spring

Removing faded flowers from winter pansies will stop them setting seed and will encourage a flush of new flowers when the weather warms up. Look out for **hellebore leaf spot** (rounded brown spots on the leaves) and remove any leaves that are affected. **Happy Gardening**



CLOPHILL METHODIST CHURCH

# COFFEE & CROISSANT MORNINGS



ALL PROCEEDS IN AID OF CLOPHILL METHODIST CHURCH

10AM TO 12 NOON

£1:50



SATURDAY 29th February

SATURDAY 4th April

SATURDAY 2nd May

ALL WELCOME

St Mary the Virgin, Clophill

## *Lent Lunches*

Raffle



Bring & Buy

**Dates for your diary 2020**

4th March

11th March

18th March

25th April

1st April

Venues to be decided

**12 noon-2pm**

Donations will be given to a charity

*Everyone very welcome*

For information or if you require transport phone Gill Jones 01525 861058

*There are no notes from the PC meeting held in January nor any planning applications in this months edition. This was due to a need to bring forward the compilation of this issue prior to the January PC meeting date. We should be back to normal in March folks!!*

Clophill Parish Council has a new website with a new look and feel, as well as a growing mailing list [www.clophill-pc.gov.uk](http://www.clophill-pc.gov.uk). We welcome your feedback on what information you would find most useful. The Parish Council Clerk, James Stirling, would like to invite you to join the mailing list. Our plan is that as items are published, an email will be sent to alert people, very much like the CBC mailing list.

More information has been added to the Website, including minutes going back to 2011. Paper copies of minutes prior to 2018 are available to view at Bedford Archives.

We also have links to planning applications and news items on the front page. Planning applications can be found here: [www.clophill-pc.gov.uk/planning-applications](http://www.clophill-pc.gov.uk/planning-applications). If you notice a broken street light owned by the PC, there is a reporting page and information on where the lights are: [www.clophill-pc.gov.uk/reporting-faulty-street-lights](http://www.clophill-pc.gov.uk/reporting-faulty-street-lights).

You can also contact the Clerk to the Council via the website contact page.

Meeting dates are normally planned at the annual general meeting and posted on the website along with locations [www.clophill-pc.gov.uk/calendar](http://www.clophill-pc.gov.uk/calendar). This has an option to add to various calendars as well. The Parish Council meetings have an open public session at the start of the meeting. Please review the agenda prior to attending, or the information on the website.

Finally below is an analysis of the last six months of Crime figures for Clophill as provided to us by the Police.

Number	Mont						
Offence	May	Jun	Jul	Aug	Sep	Oct	Grand Total
Sec 4a POA Causing intentional harassment, alarm or distress	3		2		1	1	7
Harassment - without violence (course of conduct)		1	3			1	5
Other criminal damage, other (Under £5,000)		1		2	2		5
Theft from a motor vehicle	1		1		1	1	4
Theft from shops and stalls	2	1	1				4
Other criminal damage to a vehicle (Under £5,000)	1		2	1			4
Sending letters etc with intent to cause distress or anxiety			1	2			3
Assault without Injury - Common assault and battery			1	1	1		3
Interference with a motor vehicle			1				1
Theft in a dwelling other than from automatic machine or meter						1	1
Other criminal damage to a dwelling (Under £5,000)			1				1
Burglary - Business And Community						1	1
Causing serious injury by dangerous driving		1					1
Theft of a motor vehicle	1						1
Owner or person in charge allowing dog to be dangerously out of control		1					1
Sec 4 POA Fear or provocation of violence						1	1
<b>Grand Total</b>	<b>8</b>	<b>5</b>	<b>13</b>	<b>6</b>	<b>5</b>	<b>6</b>	<b>43</b>

The next Parish Council meeting will take place at the Methodist Church Hall at 7.45pm on Tuesday 25 February

# Clophill's Serving Survivors of WW1

by Sue Pearson

*In celebration of Clophill's brave men who fought in and survived the First World war...*

**Frederick Brown** is thought to be the Frederick Brown that was born in 1879 in Maulden. He married Kate Braybrook in 1900. In 1901 they lived in Back Street. He worked as a Shepherd. By 1911 they had had 5 children and moved to Church End, Haynes. Fredrick was a Private with the Bedfordshire Regt. He went to India in 1916 and was still there in July 1918 when he wrote to his wife stating that the climate was "very trying." By 1939 the family were living in Ampthill and Frederick worked as a Market Garden Labourer.

**Frank Bull** was a Private in the 860th Area Employment Co. He lived on the High Street from around 1918 to 1922. It is believed he was Frank Lancelot Bull, born in Islington in 1884, married locally to Rosetta Palmer (who's family lived on the High Street) in 1909. They had a daughter and went on to live in Southgate, London where Frank worked as a jeweller's shop assistant.

**Frederick Horatio Bunny** lived in The Slade. He enlisted in the Surrey Regt. in 1914 but was discharged through sickness in September 1915. On recovery in 1919 he became a Sapper in the Royal Engineers and by 1921 had been promoted to Lance Corporal.

**Edward Crawford Burrows** was a Captain in the Essex Regt. He lived on the High Street. In the 1911 Census he is shown as owning Ivy House, although he was living in Temple Court, London. He appears on several censuses as the owner of Ivy House but always living in London.

**James Burton** - Born in Little Cranfield, Essex in 1872, he worked in 1911 as a market gardener's labourer, living in The Slade. He enlisted in 1916, serving with the Road Construction Co., Royal Engineers. His service papers show his occupation as "Roadman." He was married to Selina, and had 4 children. He died in 1938.

**Sidney Charles Burton** was also born in Little Canfield, Essex, in 1894 and he lived in Hoddesdon with his parents and siblings in 1901. By 1911 they lived in The Slade. His father, James was a Market Gardener's labourer (see above). Sidney was a Farm Labourer. He became a Private in the 100th Labour Corps. He died in Ampthill in 1988.

**Earnest J. Bushby (or Ernest)** was a Private in the Grenadier Guards (Machine Gun Regt). He joined in 1918 and after completing his training worked with his unit in England. As he was medically unfit, he was not transferred to overseas. He was demobilised in 1919. In 1911 Ernest was one of 6 children living with his parents George, a shepherd, and Eliza in Jacques Lane. Ernest was born in April 1899. When he enlisted he gave his occupation as Market Gardener and his height as 6' 1". He died in March 1965.

**George Frederick Bushby** was a Private in the 2nd London Regt (Royal Fusiliers) having joined up in 1916. In 1917 he was drafted to France but soon after his arrival on the Front was wounded and taken prisoner. He was held in captivity until after the Armistice, when he was sent home. He was demobilised in March 1919. He lived in Jacques Lane. George was 1st cousin to the Bushby brothers above and below. He was born in 1898 and on the 1911 census was a schoolboy living with his parents Frederick, an Agricultural Labourer, and Emily (Hare). George died in Pontefract, Yorkshire in September 1981.

**William Bushby** was a Rifleman in the King's Royal Rifles. He volunteered in 1915 and in 1916 was drafted to Egypt. He later proceeded to Palestine and fought at Jaffa, Gaza and Haifa. He was demobilised in April 1919. William lived in Jacques Lane. He was Ernest Bushby's elder brother. William was described as a Jobbing Gardener on the 1911 census. He was born in April 1892.

# What's on in and around Clophill

FEBRUARY



**Friday 28th**

**Talk "How to run a Stately Home"** St Mary's Church, 7:30pm for 8pm start.  
*See poster in this issue*



**Saturday 29th**

**Coffee and Croissant morning** Clophill Methodist Church, 10am to 12noon.  
*See poster in this issue*

MARCH



**Saturday 7th**

**Beetle Drive** Clophill Methodist Church, 6:30pm. *See poster in this issue*



**Saturday 14th**

**"Rockin the Joint"** Village Hall, 8pm. *See poster in this issue*

APRIL



**Saturday 4th**

**Coffee and Croissant morning** Clophill Methodist Church, 10am to 12noon.  
*See poster in this issue*



**Saturday 25th**

**A night of SKA with "Hope and Glory"** Village Hall, 8pm.  
*See poster in this issue*

## On throughout the month...

**Tuesdays...**in term time

- **Clophill Preschool - Stay and Play**  
9.30am-10.30am Village Hall, See 'Village Groups' for contact details

**Wednesdays...**

- **Tea and Chat** 10.30 to noon, Methodist Church

**Thursdays...**

- **Thursday Leisure Club** 2pm, St Mary's Church

**Fridays...**

- **Clophill Toddler Group** 10am-11.30am, Village Hall, See 'Village Groups' for contact details

**One Saturday a month...**

- **Messy Church** 4pm-6pm, Clophill Methodist Church. Dates: Mar 28, May 16, Jul 11, Sep 12, Nov 14, Dec 12. See 'Village Groups' for contact details.

### CHURCH SERVICES

**Regular services at St Mary's Church, Clophill**

1st Sunday	8am, Holy Communion; 10.45am, Family Praise
2nd & 4th Sundays	10.45am, Parish Communion
3rd Sunday	10.45am, Morning Prayer/Praise
5th Sunday	10am, Benefice Services

**Regular services at Clophill Methodist Church**

1st, 2nd, 4th, 5th Sundays	10.30am Morning Service
3rd Sunday	10.30am All Age Worship Service

If you have any diary dates that you would like included on this page,  
please email [clophillspotlight1@hotmail.co.uk](mailto:clophillspotlight1@hotmail.co.uk)

# Useful numbers

<b>Gas</b> (Emergency)			0800 111999
<b>Electricity</b> (Emergency)			0800 7838838
<b>Emergency Fire/Police/Ambulance</b>			999
<b>Water/Sewage</b> (Anglian Water)			0845 7145145
<b>Telephone</b>	(Customer Services) 150	(Faults)	151
<b>Highways Department</b> (Central Bedfordshire Council)			0300 3008049
<b>Benefits Agency</b> (Bedford office)			01234 361500
<b>Registrar's Office</b> (Births/deaths/marriages)			0300 3008089
<b>Rail</b> (Enquiries)			0845 7484950
<b>Buses</b> 01234 262151	(Link A Ride) 01525 840511	(Flittabus)	01582 406561
<b>Luton Airport</b>			01582 405100
<b>Swimming</b>	(Flitwick) 01525 717744	(Robinson Pool)	01234 212479

## LOCAL GOVERNMENT

<b>Central Beds Offices</b> (Chicksands)			0300 300 8000
<b>Mid-Beds MP</b>		Nadine Dorries	01462 811992
<b>Central Bedfordshire Councillors</b>		Michael Blair	01525 404513
		Paul Duckett	07988 184061
<b>Clophill Parish Council</b>	(Clerk) James Stirling	clerk@clophill-pc.gov.uk	01462 887226

## HOSPITALS

<b>Bedford</b> (North & South)	01234 355122	Admissions	01234 261150
		Appointments	01234 359012
<b>Luton &amp; Dunstable</b>			0845 1270127

## DOCTOR'S CLINICS

<b>Ampthill</b>	(Houghton Close) 01525 300898	(Oliver Street)	01525 631395
		(Greensands)	01525 631390
<b>Shefford</b>	Enquiries 01462 818620	Appointments	01462 810034
<b>Barton</b> 01582 528700		<b>Flitwick</b>	01525 715300

## POLICE

<b>County Police HQ</b>		Non Emergency	101
<b>Ampthill Station</b>			01234 841212
			101

## CHURCHES

<b>St Mary's Parish Church</b>		RECTORS POST VACANT	
	(Church Warden) Rosemary Ilett	mandrilett@onetel.com	01525 860274
<b>St Francis RC Church, Shefford</b>		Ian Gordon	01525 860875
<b>Clophill Methodist Church</b>		Jim Davies	01525 860829
<b>Baptist Churches</b> (Ampthill) Doreen Gibbs	01525 862424	(Maulden) Ian Crawford	01525 634325
		(Shefford) Hazel Arnold	01462 812564

## SCHOOLS

<b>Clophill St Mary's C of E Lower School &amp; Nursery</b>	(Headteacher Mrs K Bingley)		01525 860206
<b>Harlington Upper School</b> , Harlington			01525 755100
<b>Preschool</b>	clophillpreschool@gmail.com	(Chris) 07936 006381 or (Imogen)	07765 887868
<b>Redborne Upper School</b> , Ampthill			01525 404462
<b>Robert Bloomfield Middle School</b> , Shefford			01462 628800



# Village groups

Beverley Court  
Brownies  
Clophill Community Care  
Clophill Heritage Trust  
Clophill Preschool

Clophill St Mary's C of E Lower School & Nursery  
Clophill Toddler Group  
Clophill United Charities  
Conservation Group  
Flower Club  
Friends of the Cheshire Home  
Funzone After School Club  
Greensands Community Choir  
Indoor Carpet Bowls  
Messy Church

St Mary's PTA  
Scouts and Cubs  
Tea and Chat  
Village Hall Booking Secretary

860920  
<https://enquiryym.girlguiding.org.uk>  
Duty Contact 07791 773705  
Ali Bradbury 07894 710001  
Imogen 07765 887868  
Chris 07936 006381  
Emma Topliff 860206  
Hannah Compton 07535 705711  
Richard Pearson 861110  
Brian Adams 862297  
Gillian Hill 860539  
Sue Pearson 861110  
07903 167493  
Luke Howard 07975 520085  
Tony Meredith 860754  
Victoria Higgins 07920 568861  
[victoriajhiggins@hotmail.co.uk](mailto:victoriajhiggins@hotmail.co.uk)  
Julia Skelton 07774 993973  
[www.scouts.org.uk/get-involved](http://www.scouts.org.uk/get-involved)  
Anita Errick 860695  
Marilyn Browning 07821 643936

## Kings Windows

**TIMELESS FLUSH TIMBER ALTERNATIVE WINDOWS**

as seen in *The Old Compasses & The Stone Jug*

*available exclusively from*  
**Kings Windows**

**10**  
GUARANTEED  
YEARS

Available in a range of traditional colours  
Choose classic joints to look like wood  
Stunning handle options

**01582 882 800**  
[www.kingswindows.co.uk](http://www.kingswindows.co.uk)



## Future LuToN expansion consultation: Making best use of our runway

London Luton Airport Ltd is currently scheduled to consult on its expansion proposals from 16 October – 16 December 2019. The proposals will allow the airport to handle up to 32 million passengers a year by 2039, up from nearly 18 million today.

Consultation events will be held across the region – please see [futureluton.llal.org.uk](http://futureluton.llal.org.uk) for further information and updates. Consultation event dates and venues will be published before the consultation begins.

# DAVID JAMES

[WWW.DAVIDJAMESKITCHENS.CO.UK](http://WWW.DAVIDJAMESKITCHENS.CO.UK)



**SAVE £££**  
**BUY DIRECT**

**Call 01525 722230**

## NEW

KITCHEN & LIGHTING  
SHOWROOM

5 MINUTES  
FROM CLOPHILL

DESIGN  
MANUFACTURE  
INSTALL

Pulloxhill  
Business Park  
Greenfield Rd  
Bedford  
MK45 5EU



*GCC*  
Greensand Community Choir  
**LOVE SINGING!**  
sing with an exciting local choir...



Come along to your local **community choir**,  
for men and women of all singing abilities!  
Mondays, 8.00-9.30 pm at St. Mary's Church, Clophill.

- Come and sing with an exciting new local choir led by a professional musical director
- Uplifting music in a variety of styles: musicals, classic pop, folksongs, sacred and world music
- Welcoming singers of all abilities - no audition, no need to read music!
- New members - come along any time for a free taster



Enquiries to:

[greensandcommunitychoir@gmail.com](mailto:greensandcommunitychoir@gmail.com)

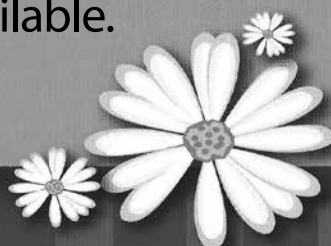
or ring Luke on: 07975 520085

## Daisy Cooper

Spring cleans, one off cleans and  
moving home cleans all available.

[Daisycooper22@hotmail.co.uk](mailto:Daisycooper22@hotmail.co.uk)

Please call 07913 332914



Keeping your home as fresh as a Daisy

## Hypnotherapy...*the Mindful Way*

For help with: anxiety, stress, IBS, migraine mindful eating,  
insomnia & many other conditions. For more information or  
an initial consultation please contact Ann. Tel: 07791171980

Email: [enquiries@pathwaysofmindfulness.co.uk](mailto:enquiries@pathwaysofmindfulness.co.uk)  
[www.pathwaysofmindfulness.com](http://www.pathwaysofmindfulness.com)



## Painter and Decorator

Call Chris : 07950714579



*do you want your  
home brightening up?*

*all interior & exterior work*

*no job too small!*

*free no obligation quote*

*25 years experience  
& fully insured*

*facebook: @christopherthepainter  
email: chris.minihane@btinternet.com*

## JK Garden and Landscape Services Ltd



**We offer...**

*full landscaping service*

*patios*

*fencing*

*decking*

*new lawns*

*driveways*

*all garden maintenance*

Contact us on **0791 2028254**  
or at **jkgardening@hotmail.co.uk**

You can also find us on Facebook

## TALKEASY Coaching

***Do you want to make a fundamental  
difference to your life and don't  
know where to start?***

My name is Lynn and I am a Life Coach.

I have extensive experience helping  
with every aspect of life, e.g. support with  
family issues, or your own financial,  
emotional, or physical wellbeing.

My most recent project has been supporting  
young teenagers in their place of education.

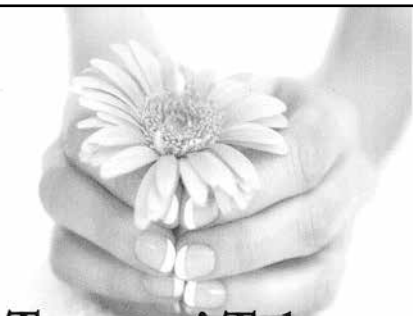
Be the change in your life  
and contact me for a free,  
no obligation chat.



**07557948644**

**01525860384**

**lynncllements87@gmail.com**



## Tammys' Talons

**Nail Technician**

**Gel. Manicure and Pedicure**

**IZABEL HAMMON**  
REGISTERED NAIL TECHNICIAN

CALGEL IZ

**Tammy Kirby**

**Clophill, Bedfordshire, MK45 4AW**

**Tel : 07968379309**

**tammystalons@gmail.com**

# Linda Allsop

PHYSIOTHERAPY



Chartered  
Physiotherapist  
with over 30 years  
experience in both  
the Private Sector  
and the NHS.

Home visits  
available.  
Based in  
Graverhurst

01462 711978 | 07989 257026  
[www.linda-allsop-physio.co.uk](http://www.linda-allsop-physio.co.uk)  
[lindaallsop@btinternet.com](mailto:lindaallsop@btinternet.com)

USING PARABEN & SULPHATE FREE, 100% VEGAN,  
CRUELTY FREE PRODUCTS



## A Cut Above Hairdressing

by Rachel

In the comfort of your own home  
cutting & styling specialist

call or text : 07896009382  
facebook: acutaboverachel

Salon experienced  
Fully insured  
Fully qualified to Level 3 Standard.

## E.T. Accountancy Services

Experienced Chartered Accountant and  
Chartered Tax adviser based in Clophill  
providing a full range of accountancy  
and taxation services to businesses  
and private individuals.

To arrange a free initial consultation  
please telephone me on 01525 590465  
or email [emma@et-accountancy.co.uk](mailto:emma@et-accountancy.co.uk)

Chartered Accountant and  
Chartered Tax Adviser

Emma Thoulass FCA CTA  
[www.et-accountancy.co.uk](http://www.et-accountancy.co.uk)  
01525 590465



## Professional friendly accountancy services

Fully qualified,  
Free initial consultation,  
competitive fees  
Sole traders, Ltd companies,  
bookkeeping, payroll,  
CIS, VAT & Tax.

[sally@sjtax.co.uk](mailto:sally@sjtax.co.uk)  
**01234 831997**  
**07899 808592**



# ADAM IN YOUR GARDEN

**TREE SURGERY, HEDGE TRIMMING,  
TURFING, FENCE MAINTENANCE,  
DECKING, PATIO CLEANING**



Qualified, Fully Insured, Competitive Rates  
Free Estimates

**TEL: 01582 518954 MOB: 07828 490360**

**Web Site: [www.adaminyourgarden.co.uk](http://www.adaminyourgarden.co.uk)**

# MB

## ACCOUNTING SERVICES

accounting solutions for the  
***Self-Employed*** and ***Small Business***  
including

**HMRC tax returns • Accounts • Bookkeeping**

For a totally confidential service at **very competitive rates** contact  
Richard Fairholm T: 01525 861087 M: 07714189994 E: [mbaccounts@btinternet.com](mailto:mbaccounts@btinternet.com)

Telephone  
**01525  
860526**

## *The Stone Jug*

**A Free House**  
BACK STREET, CLOPHILL

Despite many protestations from 'the Matriarch', Joyce is still very much at the helm (or so we tell her!). Vikki has been demoted (but she's still here, don't you know!) and Mark has moved into pole position and is doing exceptionally well. We're still very much a family-run village pub with our late dad's saying still ringing true – 'We're a proper pub for proper people'. Cheers!

- 5 real ales, including 2 guest pumps that change frequently (see our Facebook page for details)
- selection of wines and Prosecco by the glass – or even better, by the bottle
- home-cooked lunches Tues-Sat, 12pm-2pm



**REMEMBER OUR MOTTO**  
**"A VISIT TO THE JUG IS BETTER THAN GOING TO A PUB"**  
**CHEERS JOYCE, VIKKI & MARK**

[www.stonejug.co.uk](http://www.stonejug.co.uk)

[www.facebook.com/thestonejugclophill](http://www.facebook.com/thestonejugclophill)

# OVENCLEAN.

The original oven cleaning specialists

All types cleaned:



- Ovens
- Grills
- Ranges
- Hobs
- AGAs
- Microwaves
- BBQs
- Extractors

Fully insured, and DBS Police Checked

For a quote call Clive direct on:  
**07949 233089 or phone the Office on 0800 840 7127**



[www.ovenclean.com](http://www.ovenclean.com)



Ovenclean Clive Burgess

## Warm Property Services



### Heating



### Plumbing



### Bathrooms



Maulden based. British Gas trained engineer with more than 10 years' experience. Discount for over 60's.

Free no obligation quote & advice.



Boiler and heating installations



Power flushing



Landlord Safety certificates



Bathroom suites



Plumbing and drainage



Fires and cookers

**07716 478794 01525 839342**  
[www.warmprops.co.uk](http://www.warmprops.co.uk)

THE BLUECAT



LUXURY CATTERY

**Tel: 01525 861416**  
[www.thebluecat.net](http://www.thebluecat.net)

Find us on Facebook @thebluecatcattery  
or email us at [enquiries@thebluecat.net](mailto:enquiries@thebluecat.net)

The Bluecat is a luxury cattery set in the quiet area of Jacques Lane in Clapham. With just 14 cat chalets, we have time to fuss, pamper and play with your cat to its heart's content whilst in our care. Please call for further information.

## Misty Double Glazing?

Over 30 Years experience. FREE Quotes

Over 30 Years experience. FREE Quotes

**KEEP YOUR WINDOW FRAMES...  
... WE JUST REPLACE THE GLASS!**

• UPVC • Aluminium • Or Wood

Because we replace just the glass the repair is a  
Fraction of the cost of a complete replacement window.

BEFORE



AFTER



**mistydoublinglazing.co.uk**  
**QUALITY GLAZING SERVICES**

**01525 876808**

**WE ALSO REPLACE BROKEN...**

• Glass • Handles • Hinges & Locks  
**AND REPAIR...Patio Doors & Conservatories!**

# THE SECRET OF GREAT HAIR

The secret of great hair is a great haircut. *By Kevin Reynolds*  
Have your hair done in the comfort of your own home.  
Free consultations available.

Kevin ran his own salon in the West End of London until he moved to Bedfordshire 15 years ago. Whether you're looking for a re-style, a new colour, original hair ideas, something cutting -edge or something familiar, you'll be safe in Kevin's hands.

Call us now for an appointment

## 07970 467805

**kevinreynolds**

Hair Stylist

reynoldskevin59@gmail.com



## Nicola Rayner Fitness

*Feel great in 2019!*

### BOXWORX

Fun, effective pad work based boxing class for a great stress relieving total body workout!

**Wednesday 8-9pm**

**Clophill village hall**

Limited spaces available booking essential

### Pilates & Men's Core Strength

Improved core strength and posture through low impact stretching and spine safe conditioning exercises. Delivered with a positive, caring approach in a fun and friendly environment to leave you feeling energized!

**Classes in Flitton & Silsoe**

Limited spaces available booking essential

Classes also in the surrounding area

**Legs, Bums & tums**

**Zumba**

**Ladies Boot Camp**

For full timetable or to book contact Nicola  
fitone@live.co.uk 07801 510988



# be hot!

with  
Slimming World


**TUESDAY**

**Silsoe**

Silsoe Community Sports Centre  
Chestnut Avenue, MK45 4GP  
5:30pm & 7:30pm

Tel / Text: Liz for details  
07973 532793

**slimmingworld.co.uk**

0344 897 8000   



## Welcome to Clophill St Mary's C of E Lower School and Nursery

A small, friendly, Voluntary Aided Church of England Lower School, graded 'Outstanding' by Ofsted, with close links to the local community.

St. Mary's is a Values based school taking children aged from 2 years 7 months to 9 years and providing them with a framework for living, tightly woven into the positive Christian ethos of the school.

Breakfast and after school care for all ages.

## Acorn Nursery

for preschool children aged 2 years 7 months to 4 years with breakfast and after school care available.

Providing 30 hours free childcare entitlement.



To arrange a visit, please call us 01525 860206  
or email: [generaladmin@nursery@clophillstmarysschool.co.uk](mailto:generaladmin@nursery@clophillstmarysschool.co.uk)  
For more information visit: [www.clophillstmarysschool.co.uk](http://www.clophillstmarysschool.co.uk)

## We book the household names you know and many others besides



Whether you want a beach break, a honeymoon, golfing holiday,  
safari trip, escorted tour, or anything besides, just ask us!

**01234 326778**

24 Mill Street, Bedford MK40 3HD

sales@cruiseselect.co.uk  
www.selecttravelholidays.co.uk  
www.cruiseselect.co.uk



BOOK WITH CONFIDENCE  
ABTA & ATOL protected



## ARCHITECTURAL DRAWINGS AND BUILDING DESIGN SERVICES

Professional Architectural design services provided for all types  
of private residential building projects including extensions, loft/  
garage conversions, garages and outbuildings through to new build  
dwellings with all necessary council approvals obtained.

For free estimates and advice contact Steve  
Coates on Flitwick 01525 862457 or 07960 215053.  
stevecoates72@gmail.com

S & S Coates Surveying & Design, Unit 4 The Courtyard,  
r/o 13 High St, Clophill, MK45 4AB.



**CBuildE**  
chartered building engineer



# A L & G ABBOTT

F u n e r a l   D i r e c t o r s

~ Established 1832 ~

WITH YOU WHEN IT MATTERS MOST

An independent family business continuing to provide a caring & professional service to Bedford, Kempston & the surrounding villages.



- 24 Hour Personal Service
- Pre-Paid Funeral Plans
- Private Chapels of Rest
- Green Burials
- Home Arrangements
- Civil Services Available
- Bereavement Listening Service (Free to our families)



**T 01234 843222**

**[www.abbott-funerals.co.uk](http://www.abbott-funerals.co.uk)   [support@abbott-funerals.co.uk](mailto:support@abbott-funerals.co.uk)**

150 BEDFORD ROAD, KEMPSTON, BEDFORDSHIRE, MK42 8BH



# AIMS

Tim Kemp BA FCA  
Top Barn Rectory Road  
Steppingly MK45 5AT

TEL/FAX : 01525 717141  
MOBILE : 07900 823 012  
[www.aims.co.uk](http://www.aims.co.uk)  
e-mail: [timk@aims.co.uk](mailto:timk@aims.co.uk)

- ♦ **Professional** service providing for all your accounting and tax needs
- ♦ **Practical** advice based on 20 years experience in **running** businesses
- ♦ **Personal** approach with fixed fees relevant to the work **you** need
- ♦ **Friendly, local** accountant supporting the community for over 20 years

Please call for a free, no-obligation initial meeting

**ACCOUNTANTS FOR *business***

## Hills-Howson Financial Services

Financial adviser appointments available in your home or our office

The Old Post Office  
53 High Street  
Claphill  
Beds MK45 4BE

Tel: 01525 861803  
[www.hills-howson.co.uk](http://www.hills-howson.co.uk)  
[hills.howson@btconnect.com](mailto:hills.howson@btconnect.com)

Including:-

Investments

Pensions

Protection

Annuities



## W&H PEACOCK

AUCTIONEERS & VALUERS

### Weekly Auctions

Visit the Bedford Auction Centre to enjoy the excitement of a live auction.

Antique & Modern Furniture • Clocks • Books  
Ceramics & Glassware • Pictures & Prints  
Bicycles • Jewellery & Watches • Collectables  
Garage Tools & Equipment • Household Electrical Items  
Office Furniture & Equipment • Retail Products & Stock  
Vehicles • Horticultural & Commercial Equipment  
Building Materials • Garden Furniture & Effects

Eastcotts Park, Wallis Way, Bedford MK42 0PE 01234 266 366 [peacockauction.co.uk](http://peacockauction.co.uk)

## THE COMPUTER MAN



Got a problem with your computer and don't know what to do? Suffering with a virus or spam?

**Don't hesitate! Ring your local computer expert**

**Remote repairs or home visits  
(Day, evening & weekend)**

**Lap top/desk top loan  
(Free pick up & drop off in local area)**

Comprehensive health check from £35 (**Special Offer** £35 - normally £40)  
Refurbished fl at screen available from £15 • Refurbished base units available from £99



Contact Stephen Amos  
**07976 718567**  
[the.computerman@ntlworld.com](mailto:the.computerman@ntlworld.com)





## **rincontuition - Spanish & Maths**

**Expand your knowledge. Boost your confidence**

**Phone 01525 860743 - Mob 07952 667814**

**Exam techniques and preparation. Revision and practice papers: SATs, 11+ and GCSEs**

**Spanish** for business or pleasure, all levels. GCSE & A-levels

Skills development: conversation, reading and writing

**Maths:** Boost your confidence and abilities

KS1, KS2, KS3, SATs, 11+ and GCSE practice papers.

References available. Reasonable rates

**Enquiries: 01525 860743 - 07952 667814**

**rincontuition@yahoo.com**



## **LIZZIE BROWN PET CARE & HORSE GROOM SERVICES**



**DOG WALKING  
PET POP-IN & FEEDING  
PET/HOUSE SITTING  
EQUINE GROOM\***

(\*BTEC Cert Equine Management)



**Lizzie Brown 01525 862459 / 07500 989 700**

*Reliable friendly local service*

**Short notice available (no contract commitments)**

**Insured Quality references available CRB checked\***

\*(Disclosure & Barring Service)

# Hairs & Graces

Unisex Salon



Wet Cut £19  
Cut & Blow Dry £30  
Colours start from £27  
Special OAP rates

## Opening Hours:

Monday	9.30-2.00
Tuesday	9.30-5.00
Wednesday	9.30-5.00
Thursday	9.30-8.00
Friday	9.30-8.00
Saturday	9.30-4.00

Zoe, Donna, Gemma  
and Amanda look forward  
to welcoming you.

Ring now to book an  
appointment.  
Appointments also  
available with our Barber.

Burgoine Business Centre, 117 Clophill Road, Maulden MK45 2AE

**01525 861491** • Loads of free parking



## GARDEN DOCTOR

### Rob McLeod

Pruning Specialist

### Professional, Local, Experienced

- \* All tree and hedge work undertaken
- \* High standard of work
- \* Waste material recycled for compost
- \* Free Quotations
- \* Local, reliable service you can trust

**Tel: 07763 239340 or 01525 861568**

**email: [rob@gardendoctor.org.uk](mailto:rob@gardendoctor.org.uk)**

**[www.gardendoctor.org.uk](http://www.gardendoctor.org.uk)**

*Call the Garden Doctor and bring Good Health to your Garden*



Hedging & Pruning  
Shrubs & Fruit Trees  
Tree Surgery & Removal  
Fully certificated and insured



## We'll get you up and running!

We offer the very best physiotherapy care from a friendly approachable team of nine highly trained Chartered Physiotherapists all members of the Health Professionals Council

### Expert treatment including:

Neck/Back/Hand and Tennis Elbow Pain  
Headaches/Migraine/Sciatica  
Incontinence/Pelvic/SIJ/SPD/Pregnancy Back Pain  
Sprains/Strains/Torn Ligaments  
Whiplash/RSI/Osteoporosis/Sports Injuries

### Specialist Physiotherapists:

Neurological, Paediatric, Vertigo and Dizziness

### We also offer complementary treatments:

Acupuncture, Reflexology, Massage, Indian Head Massage,  
Chinese Herbalist, Lymphatic Drainage and Pumps



Tel: 01525 720882 [www.chartered-physiotherapy.co.uk](http://www.chartered-physiotherapy.co.uk) Email: [amphillphysio@btconnect.com](mailto:amphillphysio@btconnect.com)

7 Station Square, Flitwick, MK45 1DP



**The Happy Place.co.uk**

On the Green beside the Post Office every Friday, 3.30-7.30pm

We are your local mobile fish and chip van, we have been parked on the green every Friday for the past 6 years. We serve only the highest quality produce, cooked fresh to order and served to you by our friendly staff.

Why don't you pop down and come and Try Our Fry!

To avoid waiting in the cold, give us a call to

**place your order on: 07833 786108**

A big thank you to all our customers who have loyally supported us over the past couple of years.

## Chapman & Kirby Heating

**Gas, Plumbing & Heating Installations**

**Gas Safe Registered**

**Boiler Servicing & Maintenance**



**Call us now**

**Tel: 01525 861255 Mob: 07831 132308**

**Email: [info@chapmanandkirbyheating.co.uk](mailto:info@chapmanandkirbyheating.co.uk)**

**1C, Old Silsoe Road, Clophill, Beds., MK45 4AR**



We take care of the details, so you can say goodbye the way you want to.

NEVILLE. Because there is a difference.

## **AMPTHILL**

The Old Church, Flitwick Road MK45 2NT

t: 01525 406132

e: [ampthill@nevillefuneralservice.com](mailto:ampthill@nevillefuneralservice.com)

---

## **SHEFFORD**

24 Clifton Road SG17 5AE

t: 01462 813258

e: [shefford@nevillefuneralservice.com](mailto:shefford@nevillefuneralservice.com)

[www.nevillefuneralservice.com](http://www.nevillefuneralservice.com)










If you've been thinking about enjoying a great lawn this year – green, lush and weed-free, why not contact us today and let us bring your lawn to life.

We provide four seasonal treatments, as well as beneficial treatments to keep your lawn in tip-top condition - prices start from just £5\* per month.

PRICES FROM  
**£5\***  
PER MONTH

Ask us about our annual plans, which allows you to both spread the cost and save up to 25%.

**GreenThumb**  
LAWN TREATMENT SERVICE

Simply call: 01234 709345 or  
visit: [greenthumb.co.uk](http://greenthumb.co.uk)   

\*Based on a lawn size of 40m²

Baths, Toilets &  
Showers  
Sinks and Taps  
Guttering  
Leaks and Burst Pipes  
Drainage  
Handyman jobs also



Silsoe based  
No call out fee – free estimates  
Fully insured and guaranteed  
No job too small  
**07720 723653 01525 864859**  
[info@betaplumbing.co.uk](mailto:info@betaplumbing.co.uk)  
[www.betaplumbing.co.uk](http://www.betaplumbing.co.uk)

## **Washing Machines Dishwashers Dryers Electric Ovens Repairs Servicing Sales**



A local family business offering  
a quality service at a competitive price  
Est. 1981

**Tel: CLOPHILL 860148**  
**or Tim Downing direct on 07969 545 276**

A member of the White Goods Trade Association  
Fully Insured

the  
café

AT

**W&H PEACOCK**  
AUCTIONEERS & VALUERS

Visit

**www.peacockscfe.co.uk**  
for more details and to view  
our current menu.

Eastcotts Park, Wallis Way,  
Bedford, Bedfordshire  
MK42 0PE

**01234 266 366**



**View the salerooms for our upcoming auctions  
and then relax with a coffee and a slice of cake.**

Our unique café in Bedford Auction Centre with free wi-fi and  
views of the salerooms, comfortably seats over 100 customers.

We serve cooked breakfasts, paninis and sandwiches, light  
lunches and snacks plus a range of hot and cold drinks.

**Senior Citizen discounts available**

Open Monday to Thursday from 8.30am - 3.30pm  
Extended opening on Friday to 7pm. Saturday 8.30am - 4pm  
(Last orders 1 hour before closing)

## LOCAL ALLOY WHEEL REFURBISHMENT

  
**mintalloys**  
complete alloy wheel refurbishment

**Tel:**  
**01525**  
**860069**

**Alloy Wheel Repairs**

**Diamond Cut Alloy Wheels Repaired On Site**

**Powder Coat Primers & Lacquers**

**Fast Turnaround Alloy Wheel Welding**

**Tyres At Competitive Prices**

**NEW for 2015 - 4 Wheel Alignment Service**

**www.mintalloys.co.uk**

# Root 'n Branch

Your Local Friendly & Reliable Gardener

All aspects of Garden Maintenance undertaken  
• PRUNING • MOWING • WEEDING • PLANTING • HEDGING

Southfields, Shefford  
email: whooley@hotmail.co.uk

**Tel: 07771 537385**

Public Liability  
Insured

*Conifer*  
Kennels

Quality  
BOARDING  
DAY BOARDING  
HOLISTIC FOOD SHOP  
GROOMING & GOING HOME BATHS  
OFF SITE NATURE WALKS  
QUALIFIED TEAM



**nutriment**  
ENHANCED raw diet formula

[www.coniferkennels.co.uk](http://www.coniferkennels.co.uk) **01525 860339**



The Causeway, Clophill, Beds. MK45 4BA

**Akela**

WILD WASH

**YAKERS**

SKIPPER'S

*Eden*  
Holistic Pet Foods

**GREEN & WILDS**  
Naturally for pets

Pre-Order  
Service Available

## STUART DREW ELECTRICAL SERVICES

MEMBER OF THE ECA  
PART P CERTIFIED QUALIFIED TO 18TH EDITION

From extra lights & sockets, to re-wires. Fault finding and electrical safety certification. For a professional, courteous service with free estimates & all work guaranteed, please call me

29 Lincoln Way  
Harlington  
Beds  
LU5 6NG

**Fully qualified & insured**  
**30 years experience**

Telephone:  
01525 875965  
07941 812662



# Compu-Doc

PC / laptop crisis ?

01525-402227

Call the Doc for -

Hardware & software

Diagnosis & treatment

[john.stafford@compu-doc.co.uk](mailto:john.stafford@compu-doc.co.uk)

# BURGLAR ALARMS

*New Alarms Fitted or Upgrade Existing Alarms*

## BURGLAR ALARMS

We fit New Alarms - Wired or Wireless Systems

*\*We can service and maintain your existing alarm\**

## CCTV

We fit high quality systems to maximise your security.

Access your CCTV via the internet or mobile.

## DOOR ENTRY

We fit a range of quality video and audio intercoms to suit your needs.

*We are a family run business with over 35 years experience in home security and crime prevention.*



[www.maximumsecuritysystems.co.uk](http://www.maximumsecuritysystems.co.uk)

Contact:

**01582 864138 / 07746 111520**

*For a free quote and consultation*

# McCaffrey

Your local resource for residential build, refurbishment and maintenance



General building works  
Extensions  
New builds  
Internal refurbishment/alterations

Brickwork  
Carpentry  
Painting & decorating  
Purpose made joinery

Plumbing and heating  
Electrical installations  
UPVC windows & doors  
Garage conversions



call us to discuss your building requirements

**01525 861041**

[info@mccaffreybuild.co.uk](mailto:info@mccaffreybuild.co.uk) [www.mccaffreybuild.co.uk](http://www.mccaffreybuild.co.uk)

# V.J. EDWARDS

## Plastering & Building Services

Certified Plasterer by British Gypsum – All works guaranteed for 2 years

- *Internal and external Plastering,*
- *Special Renders: Krend, monocuhe and Cemrend*
- *Stud Partitioning*
- *Plaster Boarding*
- *Garage conversions, Kitchens & Bathrooms and small extensions*



**Telephone M: 07970 011605 H: 01234 740400**



EST.  
1989

- Suppliers of traditional and modern equipment
- Working whirlpool & spa baths, power & steam shower systems on display
- Over 40 settings on display
- Complete installation service if required
- Personal friendly service from a family run business
- Wall and floor tiles
- Accessories
- Mirrors
- Bathroom furniture
- Heated towel rails
- Saunas
- Bathroom cabinets

**SHEFFORD 01462 627002**

**[www.bathroomvogue.com](http://www.bathroomvogue.com)**

Unit 4A, Shefford Industrial Park, St Francis Way, Shefford SG17 5DZ

## Hire Clophill Village Hall



Wedding Receptions  
Birthdays & Special Occasions  
Dances and Discos  
Club & Community Meetings & Activities

Phone: 07821 643 936

Mail: [Clophill.villagehall@gmail.com](mailto:Clophill.villagehall@gmail.com) Web: [www.clophillvillagehall.co.uk](http://www.clophillvillagehall.co.uk)

## ROGER STOREY

**YOUR LOCAL PAINTER AND DECORATOR**

Friendly and Reliable Service

Many Years Experience

Please phone: **01525 861253** or **07800 777615**

## ANDREW BAKER WINDOWS

9 SHEFFORD ROAD  
CLOPHILL BEDS  
MK45 4BT

SPECIALISING IN UPVC WINDOWS,  
DOORS, CONSERVATORIES,  
FASCIA, SOFFITS, GUTTERS AND  
CLADDING. ALSO AVAILABLE FOR CARPENTRY  
WORK. NO JOB TOO SMALL OR LARGE.

20 Years experience.  
Free local quotes.

**FENSA**

Fensa Registered  
FIVE YEAR GUARANTEE

Contact Andrew: 01525862804 / 07825017855

Email: [abakerwindows@gmail.com](mailto:abakerwindows@gmail.com)



# Advertisers index

## Airports

London Luton Airport 18

## Architectural Services

S&S Coates Surveying & Design 26

## Auctioneers & Valuers

W&H Peacock 29

## Bathroom Services

Bathroom Vogue 38

## Builders & Carpenters

McCaffrey Build 37

Stuart Benson Building Projects IFC

VJ Edwards 38

## Car Services/Repairs

A&F Motors Ltd IFC

Mint Alloys 35

TC Coomber Car Services BC

## Chimney Sweep

Poppins Chimney Sweep IBC

## Cleaning Services

Daisy Cooper 19

Ovenclean 23

## Computer Services

Compu-Doc 36

The Computer Man 29

## Electrical Services

Stuart Drew Electrical Services 36

## Financial Services

AIMS Accountants 28

ET Accountancy Services 21

Hills-Howson Financial Services 28

MB Accounting Services 22

SJ Tax & Accounting Services 21

## Food and Refreshments

The Cafe at Peacocks 35

The Happy Plaice 32

## Funeral Services

AL&G Abbott, Funeral Directors 26

Neville Funeral Service 33

## Garden Services

Adam in your Garden 22

Garden Doctor 31

Green Thumb Lawn Treatment 34

JK Garden and Landscape Services 20

Root 'n Branch 36

## Health & Beauty

A Cut Above Hairdressing 21

Ampthill & Flitwick Physiotherapy 32

Hairs & Graces 31

Kevin Reynolds 24

Linda Allsop Physiotherapy 21

Nicola Rayner Fitness 24

Pathways of Mindfulness 19

Slimming World 25

Tammys' Talons 20

## Home Improvements

Christopher The Painter 20

Roger Storey - Painter & Decorator 39

David James Kitchens 18

## Music and Entertainment

Greensands Community Choir 19

## Nursery Schools

Clophill PreSchool BC

Clophill St Mary's C of E

Acorn Lower School and Nursery 25

## Pet & Animal Services

Conifer Kennels & Cattery 36

Lizzie Brown Pet Care 34

The Bluecat Luxury Cattery 23

## Plumbing & Drainage Services

Beta Plumbing 34

Chapman & Kirby Heating 32

Warm Property Services 23

## Print Services

Fidelity Design & Print IFC

## Public Houses

The Stone Jug 22

## Repair Services

Tim Downing Repair Services 34

## Security Services

Maximum Security Systems 37

## Travel Services

Select Travel Holidays 26

## Tuition and Coaching Services

Rincon Tuition (Spanish & Maths) 30

TalkEasy Coaching 20

## Village Hall

Clophill Village Hall 39

## Windows/Replacement

Andrew Baker Windows 39

AW Windows IBC

Kings Windows 17

Misty Double Glazing 19

IFC = Inside Front Cover IBC = Inside Back Cover BC = Back Cover

# Why not take out an annual ad in Spotlight this year?

## Black & White per year

One-sixth £58 H31 x W126mm

One-quarter £75 H92 x W61mm

One-third £88 H61 x W126mm

Half page £123 H92 x W126mm

Please email our Advertising Manager at [ads@clophillspotlight.co.uk](mailto:ads@clophillspotlight.co.uk)





# Poppins Chimneys

**Chimneys Swept  
Wood and Multifuel Stove  
Installation & Liners**

*Great Service - Great Price!*



**01525 860424 or 07858 688785**  
**mark@poppinschimneys.co.uk**

**NO PRESSURE SALES – YOU DEAL WITH  
THE OWNER FROM START TO FINISH**



- ✓ A-rated windows as standard
- ✓ Composite doors
- ✓ High security
- ✓ Bifolding doors
- ✓ Conservatories
- ✓ Fascias, soffits and guttering
- ✓ Insurance-backed guarantee
- ✓ Fensa certificate



**Contact: ANDY WOOD**

**01582 536944 or 07796 272539**  
**sales@awwindows.co.uk**



See reviews from satisfied customers at [awwindows.co.uk](http://awwindows.co.uk)

# Clophill Preschool

**Your local Outstanding Preschool,  
based at Clophill Village Hall -  
welcoming children from  
2 years of age.**

We'll help your child to become an inventive  
and creative learner. With access to a fantastic  
outdoor area, our focus is on natural and  
exploratory 'play with a purpose'.



**Call us today to find  
out more:  
07765 887868 or  
07936 006381**

[www.clophillpreschool.co.uk](http://www.clophillpreschool.co.uk)



**Collection  
& Delivery**  
SERVICE AVAILABLE  
*Please ask*

**MOT'S CLASS 4/5L/7  
CAR SERVICING & REPAIR  
TYRES & EXHAUSTS  
AIR CONDITIONING  
DIAGNOSTIC CODE READING**

**AMPTHILL**  
**01525 406330**

UNIT F, AMPTHILL INDUSTRIAL ESTATE, STATION ROAD, AMPTHILL, MK45 2QY