

Vol 42 | No.5

FREE

CLOPHILL SPOTLIGHT

MAY 2020

**LOVE YOUR
LOCAL NEWS**

Wedding Stationery Suites

"personal branding for your wedding
'done for you'

to create beautiful memorable
wedding stationery suites
from 'save the date' to 'thank you'
no fuss, no frills and definitely no big bills,
just your big day all ways."



fidelity
your big day always

www.fidelityweddings.co.uk

Fidelity Design & Print - UNIT 7 KENNETH WAY, WILSTEAD IND EST, MK45 3PD



MOTORS LTD

Tel: (01525) 860292

Tel: (01525) 404919

208 Clophill Road, Maulden, Bedfordshire MK45 2AF
89 Oliver Street, Ampthill, Bedfordshire MK45 2SA

CAR AND COMMERCIAL VEHICLES
ALSO CLASSIC & AMERICAN CARS
SERVICING – REPAIRS – BREAKDOWN
SPRAYING – M.O.T.



Stuart Benson Building Projects

**Design, Build and Maintenance including Interior Refurbishments,
Kitchen / Bathroom fitting, Tiling, Flooring, Skirting boards, Doors
Garage conversions. Exterior Decking, Patios, Driveways
Garden Offices/ Sheds**

Tel: 07946 579862 or 01525 839878

Email: benson.stuart@gmail.com



A word from the Editor...

This month we **welcome** Grant to the Spotlight team as this is his first issue as our new designer. Well done Grant on getting the first one under your belt!!



We also have the return of the Parish council report and planning updates, see pages 10-12. These meetings are now being held via Zoom, if you would like to join the June meeting online, see page 12 for guidance.

Please keep an eye on the Parish council website for the date of the next meeting <https://clophill-pc.gov.uk/> which will also have joining instructions. These will be posted along with the agenda, nearer the time of the meeting.

Finally I would like to add my **thanks and appreciation** to the Co-op for helping distribute the magazine to our elderly and vulnerable residents via the instore box. Also to the wonderful staff there who have tirelessly (and always with plenty of smiles) kept the shelves stocked with the essentials, the post office running and the tills operating; as well as having a few treats available to help keep us all going.

Best wishes, Elaine



The magazine staff

EDITOR	Elaine Jones editorial@clophillspotlight.co.uk	07918 975823
ADVERTISING MANAGER	Emma Frost ads@clophillspotlight.co.uk	
DISTRIBUTION MANAGER	Pete Liddle	860113
TREASURER	Richard Pearson	861110

Deadline for articles is 20th of the month

You can also read Spotlight online
www.clophillspotlight.co.uk



Volunteer Drivers Urgently Needed

Agate House

Agate House is looking for Volunteer Drivers for local short trips to support our Service User's to attend church groups, clubs and hospital appointments.

If you would like to find out more, contact us:

Call: 01525 403247

Email: agate@leonardcheshire.org

leonardcheshire.org



A reflection from Clophill Methodist Church

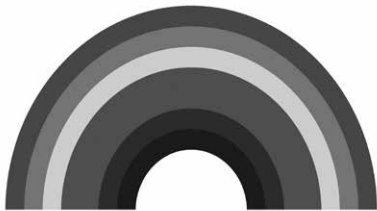


If like us you are fortunate enough to have a garden, I expect it's looking neater and tidier than ever now! When I walk the dog around the streets I see freshly cut lawns, tidy weed free borders and not a dead flower head or leaf in sight. The other day we watched the Chelsea Flower Show on TV. Like every live event this year, it's been cancelled, so the coverage was highlights and interviews from previous years. One was about conservation and wildlife, and the gardener being interviewed was talking about the importance of wildlife friendly gardens. How neat, tidy, manicured gardens are appealing to us but not so much to the wildlife. We need to leave a bit of garden untidy to attract the invertebrates, the mini-beasts and bugs and little critters that the larger creatures, like birds and hedgehogs, need to feed on.

When we sing 'all creatures great and small', we need to remember that it's the small ones, the ones we don't really notice, that are important, as without them the 'great' couldn't survive.

Another show we have watched is 'After Life' - a brilliant, poignant, comedy-drama series about Tony, who is struggling with life after the death of his wife Lisa to cancer. Whilst in hospital Lisa made him videos, which he watches endlessly. In one, she is telling him about one of the hospital staff. She says how he has a real body odour problem, and doesn't realise how much he smells. But then she realised that it was because, as a hospital porter, he spent all day running around the large buildings for everyone else. The next time she saw him, she thanked him for working so hard. With tears in his eyes, he thanked her for noticing.

Thank you



KEY WORKERS

Over recent months I think we have all come to realise the importance of those who are previously often seen as the 'small' - care workers, drivers, supermarket staff, farmers, delivery drivers, posties, refuse collectors, and in the hospitals - the nurses and doctors, but also the laundry staff, porters, cleaners, pharmacists, therapists. And I'm sure I've missed some of the many other important roles that we now know are the ones who really keep the country going. Not the 'great', but the 'small'.

I pray that as we move forward we will always find time to stop and appreciate and give thanks for the ones we tend to overlook - whether it be the mini-beasts in the gardens or the lowest paid, hard workers in our communities. Let's always give equal thanks for both the great and the small.

Stay safe and God bless, Silas
Rev Silas Wood 01525 571392



Autism
BEDFORDSHIRE



20th - 24th July
27th - 31st July

SUMMER SCHEME 2020

PAID AND VOLUNTEER VACANCIES

"A fantastic experience"

Compulsory Training Day - Saturday 30th May 2020
Hourly rate for paid staff £8.62 - £9.20
All vacancies are subject to safer recruitment process
including an enhanced DBS check

**For more information please
contact a member of the Children's
Service Team on:**

**01234 214871 or via email
enquiries@autismbeds.org**

**For further information please visit our
website**

www.autismbedfordshire.net

Autism Bedfordshire is a Company Limited by Guarantee. Registered in England No. 04632497.
Registered Office: 1 Hammond Road, Elms Farm Industrial Estate, Bedford, MK41 0UD
Registered Charity 1100722

Come into the Garden

with Kate Gardner

June is a wonderful time in the garden, as we transition from spring into summer. June 1st is the start of meteorological summer with June 21st marking the astrological start of summer.



Warm, wet weather means rapid lawn growth but a few simple maintenance activities can keep your lawn healthy over the season. Lawns in full sun may need cutting twice a week, but take care not to cut the grass with blades set to low. In dry weather this can lead to bare patches, increased weeds and shallow rooted grass which is more prone to drought. If you want good grass on our sandy soil then you will need to feed the grass with an appropriate summer lawn feed once a month. Only apply your fertiliser onto moist soil and evenly distribute it to avoid scorching the grass. Good established lawns may go dry and brown during dry periods, but soon green up when it rains.

Warm, wet weather also encourages your herbaceous perennials to shoot up and these should be supported to stop them flopping over in the rain. While there are many different ones that you can buy online and in the (now reopened) garden centres, the simplest way is to put a cane or stick firmly into the ground at the rear of the plant and use a loop of string tied onto the cane to support the plant. Think loose support with natural movement rather than rigidly upright. Plants that would benefit from support include climbing roses, oriental poppies and the tall varieties of catmint (nepeta) and salvias.

June is also a good time to cut back and divide the earlier flowering perennials such as pulmonaria, aubrieta and primulas. Lift clumps of plants, pull them apart, trim the old foliage, leaving about 5cm on each new plant. Add some compost into the soil and then replant these new plants, watering them in well. This is also the time to prune down any spring flowering shrubs such as flowering current and finish deadheading late spring flowering bulbs. Remember to water all newly planted trees, shrubs and flowering plants during dry weather until they have established good roots growth.

Deadheading will now become a key task in the garden as flowers finish and start to go over and lose their petals. With many plants the flowering period can be extended by removing the old flowers as soon as they fade. Most deadheading can be done with secateurs, cutting back to just above strong buds lower down the stems of the plant. Some plants like the hardy geraniums can be trimmed back with garden shears. It looks drastic but the plant quickly puts on new growth and plants are kept nice and busy.

If you have been growing fruit and veg at home now's the time to get your veg off the best possible start. Make sure anything you plant out is fed, watered and given an appropriate support (such as bamboo canes for runner beans) Continue sowing salad crops, such as beetroot, lettuce, and radish. Little and often means you are more likely to have something to pick all summer long. Leafy salad crops may do better when sown in partially shady sites since hot dry weather can lead to bitter tasting leaves.



If you are growing tomatoes remember to keep pinching out the side shoots and keep watering tomatoes and peppers regularly to prevent blossom end rot – a symptom of calcium deficiency due to erratic water supply. With the days lengthening and the temperatures warming, have a great month in the garden.

Happy Gardening

CLOPHILL COMMUNITY



CORONAVIRUS – DO YOU NEED HELP?

Clophill Community Care and the newly formed voluntary group, Clophill COVID-19 Support, are here to assist elderly and vulnerable residents in Clophill during this difficult time.

Are you/your household self-isolating?

We can help with practical things like:-

- * shopping
- * collecting pensions
- * collecting prescriptions
- * posting letters
- * getting books from the library
- * dog walking

We can find you a telephone buddy:-

* We'll put you in touch with one of our volunteers or others who are self-isolating so you can have regular contact with someone by phone, Skype, Zoom, WhatsApp or FaceTime.

Call Clophill COVID-19 Support on 07933 530849 or email community.support@clophill-pc.gov.uk

Do you need transport (e.g., to go to the shops, GP or hospital)?

If you **don't have symptoms of the virus** call Clophill Community Care on 07791 773705

If you **have symptoms of the virus or are living in a household with symptoms** contact your local GP or hospital – the numbers are in the 'Useful Numbers' section of Spotlight. For shopping, contact Clophill COVID-19 Support on 07933 530849 or community.support@clophill-pc.gov.uk

Could you be a volunteer?

Our volunteers are on standby to help villagers – if you have a bit of spare time we'd love you to join our team.

How it works Volunteers receive an email whenever there's a request for help – and respond if they're available. You may only be free to do certain tasks at certain times – that's OK. Working together, we hope to help as many people in need as possible.

Contact Kate on 07933 530849 or email community.support@clophill-pc.gov.uk

* For updates on how coronavirus is affecting our community go to <https://clophill-pc.gov.uk/category/news/>

Clophill Preschool News

Hello everyone, We hope you are all staying well and are managing to make the most out of this time. No doubt many of you have been out in your gardens or allotments in this beautiful weather. Some of the preschool staff team have been up at our setting, weeding, sorting and cleaning. Chris and Gary have finished the stage area, which just needs a skull and crossbones on the flag pole, and we have been moving things around to make the whole area work even better.



As we start to formulate a way forwards for reopening, we are taking stock of our outdoor space. As a setting that sees the outdoors and nature as the most enabling of environments in which to learn, we want to capitalise on this for all of our children more than ever before. As Chris heads towards completion of her Forest School training we are finding more ways to push how we operate during our Friday Forest sessions into the rest of our week.



We all know that being outside in the fresh air is even more important now. So as we plan how we can start to invite our children back into setting, we are able to use what we know and the outdoor space we have; to create not only an environment that promotes deep engagement in play and learning, but also provides a safe haven.

Our next job includes creating a den area in the mud kitchen, with a chalk boards wall for scribing and mark making. While Spotty and Dotty are on maternity leave, looking after their brood of four chicks (they adopted some eggs), their coop has been moved to make way for our outdoor metal shed that is being repurposed as an outdoor toilet to ease up footfall through the hall. Our allotment has been tended and sown and new planting has been added to the glade, which is brimming with beautiful alliums. We also hope to put some sail shades up to allow the children more protection from the sun in the areas they often get totally immersed in.



With clear boundaries in place and our continued promotion of independence and self-care, going hand in hand with clear hygiene routines; we are looking forward to our children's return. To be able to be outdoors all the time at preschool will be a great way to support our older children to get 'school ready'. The way we run our outdoor sessions encourages independence and enables our children to be physically healthy, mentally alert, emotionally secure, socially competent and able to learn. During this time of uncertainty we can at least be very sure that our preschool children will continue to flourish.

Asparagus and goat's cheese tart

INGREDIENTS Preparation time: 15 - 20 mins Cooking time: 50 mins

- 230g sheet of ready-made Shortcrust pastry
- 230g bunch Asparagus, trimmed
- 130g hard Goat's cheese, cubed
- 150ml single cream
- 4 medium eggs
- Half a 15-20g pack of chives, snipped



1. Pre-heat the oven to 200°C, 180°fan, gas mark 6. Unroll the pastry sheet and line a 23cm loose-bottomed flan tin with it, trimming the excess to fit. Prick with a fork. Chill in the fridge for 10 minutes then line with a sheet of greaseproof paper over the pastry and weigh it down with baking beans or rice grains. Bake blind for 10 minutes then remove the beans or rice and return to the oven for a further 5 minutes.
2. Meanwhile steam the asparagus for 4-5 minutes until just tender. Drain and run under cold water. Pat dry with kitchen paper and cut into 5cm lengths. Arrange over the base of the pastry case and scatter over the cubed goat's cheese.
3. Whisk together the eggs, cream and chives. Season the mixture and pour into the pastry case. Bake for 30-35 minutes until the filling is set and the top golden. Serve warm or cold with a salad.

Clophill's Serving Survivors of WW1

by Sue Pearson

In celebration of Clophill's brave men who fought in and survived the First World war...

Jeffrey/Geoffrey Thomas Eddy was born in Clophill in 1899 and lived in the Slade at the time of the First World War. In 1901 he was living in Jacques Lane with his father, Frank (an Agricultural Labourer) and his mother, Clara – along with 3 brothers and 3 sisters. In 1911 he was living with William Moseley, a widower, Jeffrey was still at school. Jeffrey became a Private in the King's Royal Rifles. Later, he was in the Prisoner of War Company, Labour Corps. In September 1918 Amptill News reported that Jeffrey who had been seriously gassed and burnt whilst on the Western Front in March was home on leave. He had been first conveyed to a Bristol Hospital for treatment and afterwards to Somerset for convalescence. He then returned to his depot. Sadly, he died in 1924 aged just 25, he is buried at the old church.

Charles Eddy was a Private in the Agricultural Company, Labour Corps. He was born in Clophill in 1883 and lived on Silsoe Road. In the 1901 census he was described as a 'Carter on a Horse Farm' and was living with his father, Daniel, mother, Priscilla, and 4 siblings. By 1911 however, aged 27, he was living at the Maida Barracks, Aldershot with the 1st Battalion of the Bedfordshire Regiment. His brother was Percy Thomas Eddy, who was killed in action in 1916. In 1920 Charles married Rose Willey in Medway, Kent. He died there in 1934.

John Farr was born in Haynes in 1891, by 1911 his father, James, had died and John was living in Jacques Lane with his mother, Jane and 4 of his siblings. His mother had had 9 children. At this time John worked as a domestic gardener. He later moved to Back Street and married Susan Rose Bailey in 1917. He enlisted with the Bedfords in 1914. In 1915, whilst on leave, he acted as best man at the wedding of Samuel King and Susan Webb. In 1917 Amptill News reported that John "is home on sick leave from hospital. He was wounded quite early in the war in the hand and arm. After a second stay in France he was wounded again, losing an eye." After this injury he was transferred to the Agricultural Company and was demobbed in 1919. In 1939 John and his wife were living in Campton and he worked as a Farm Labourer. It is thought that he died in 1964.

Joseph Farr was brother to John above, also born in Haynes, in 1893. In 1911 he was a Private serving, (at the age of 17) with the Bedford Reserves, living at that time in the barracks in Kempston, giving his civilian occupation as Farm Labourer. It is thought that he married a local Kempston girl, Carrie Crisp in 1913. He served from 1914 and was in France in 1915 with the Bedfords. He was later transferred to the Labour Corps. It is believed that he lived in Birmingham in 1939, working as a Navvy and died there in 1974.

Eli Fossey was born in Amptill in 1888. His parents were William and Susannah. In 1911 Eli was a carman, living with his widowed mother in Amptill. In 1914 he married Clophill girl Amelia Kate Juffs. Eli was a Private in the Machine Gun Corps and joined in December 1915. He trained in England but owing to medical grounds was not transferred overseas. He was demobilised in March 1919 and lived at 9 High Street, Clophill. Later he worked as an auxiliary postman and his wife as a fruit picker; they had 7 children. Eli died in 1959.

Clophill Parish Council



It was a perfect evening – warm, clear, windless and the glass of Prosecco was close to hand. The birds were in full voice, several conversations going on at the same time – an absolute joy. So, it was likewise with the wonders of technology which allowed a ‘virtual’ meeting of your Parish Councillors on 26th May, with the exception that, luckily, the birds couldn’t be muted.

The beginning of the meeting veered from the agenda as item 9a was the ‘Adoption of Delegated Powers’, basically allowing the council to hold meetings during this Covid19 crisis. The meeting was then considered legal and proceedings commenced, following the agenda. The one question from the public concerned the matter of the cutting / pruning of the trees at the bottom of Cainhoe Road. This was discussed and the decision made to add it to the agenda for the next meeting after more information could be gleaned.

The Ward Councillors noted that:

- 1 CBC had dealt efficiently with local fly-tipping and a penalty fine had been imposed.
2. The lorry drivers going to Jacques Lane were reminded that they were not to use the Causeway as a route.
3. The fallen tree on the A507 had been dealt with quickly.
4. CBC is busy dealing with grants and other effects of Covid19, especially homelessness, which covers not only those who are sleeping rough but also those currently in temporary or sub-standard accommodation.
5. The tidy tip slot booking is working well as is the Steppingly Testing Centre which has provided around 10,000 tests to date, namely for priority workers.
6. Test kits are being delivered to care homes - where there is a 20% incident rate in Central Beds as opposed to a 60% national figure. All are undertaking their own assessments of working procedures.
7. Many schools are open for relevant children and discussion followed concerning traffic systems and social distancing. With staggered staff arrivals and classes starting at different times, there might be a requirement for a Temporary Traffic Restriction.

Discussion of the planning applications followed, the minutes of the last meeting approved and the Clerk reported on the teen shelter, The Green, the Play area and the allotment vacancies at Townshott and at the Village Hall, also the Internal Audit and the reviewing of records.

Agenda item 9 had 13 sub sections – the first (a) being already covered. The rest concerned various approvals;

(e) no further update on The Lakes

(f) Councillor roles and the suggestion that non Parish Council members might like to help out with vacancies on some of the committees, either as a small group or individually and reporting back to the Council

Clophill Parish Council

Continued

- (g) there were no changes to the current Policies and Procedures
- (h) grass cutting round the village, which is currently shared between CBC and the PC, could be undertaken wholly by the PC if it was financially beneficial as could be
- (j) the changing of energy supplier to our street lights
- (k) there was discussion over - and approval of - the OpenReach request that three poles be erected on the edge of the Recreation Ground to feed fibre to a nearby cabinet
- (l) it was suggested that the Village Hall Committee approve a plan to change the current gate padlock from a key to a keypad style, thereby easing access to allotment owners and hall hirers and lastly
- (j) the potential renting of Holly Bush for a two year tenancy was discussed. Further research into such a contract was to be carried out before it could be authorised.

The meeting closed at 9.15pm, the screen pulsed to black and the evening was still an absolute beauty, although the birds, apart from a very vocal blackbird, had gone to their nests - and the glass needed a refill.

Planning

CB/20/01067/FULL

Location: 66a High Street

Proposal: Demolition of 66a High Street followed by erection of 5 no. dwellings including the creation of a new priority junction and access road, as well as associated landscaping and ancillary works

OBJECT

The original application CB/19/01862/FULL was granted on 15 Nov 2019 for the development of 3 x 4 bed and 2 x 3 bed houses of 1.5 storey and this application would seem as if they are trying to maximise profit over form by enlarging the houses to 4 and 5 beds.

CB/20/01308/FULL

Location: 56 High Street

Proposal: Removal of car port/ garage and swimming pool and erection of Single storey dwelling.

SUPPORT

CB/20/01230/FULL

Location: Land adjacent to 11-13 Little Lane

Proposal: Erection of three dwellings and diversion of footpath.

OBJECT

The development in this location would adversely harm the character and appearance of the site and the surrounding area, including the existing settlement and the landscape character of the Greensand Ridge

Planning

Continued

CB/TCA/20/00196

Location: 2 Fossey Grove

Proposal: Works to tree in Conservation area (TCA) to reduce Laurel tree (T1) crown by 1.5/2metres pruning to remove crossing branches **SUPPORT**

CB/20/01415/FULL

Location: Northlands, 114A High Street

Proposal: Single storey rear extension. Essentially replacement of an existing small upvc conservatory with a modern single storey pitched roof extension.
No additional footprint or appreciable height **SUPPORT**

Public Guidance

As a member of the public you are welcome to join a Parish Council meeting using a range of devices such as a laptop computer, desktop computer, tablet or phone (Apple or Android devices).

There is greater detail available here, including meetings to test your equipment (recommended).

<https://support.zoom.us/hc/en-us/articles/201362193-Joining-a-Meeting>

The meeting invite or meeting ID is displayed on the page with the agenda. When joining a Zoom meeting you are likely to be asked to download and install a small app or program to make best use of the resources on your equipment. It may ask for permission to use your microphone and camera. This is needed to allow you to interact and speak at the relevant sections of the meeting.

When you have joined the meeting, you will be held in a "Waiting room" and the Clerk or Moderator will let you in once the meeting commences.

Please leave your microphone muted unless asked to do otherwise. You do not have to use your camera unless you wish to, but it may help you to be understood.

Please note meetings WILL be recorded and anyone who behaves in an offensive manner is likely to be reported to relevant authorities and the content shared with those authorities.

They will also be removed from the meeting.

The recording will be held long enough to confirm the minutes and then destroyed.

Remember that a parish council meeting is by law "a meeting held in public", not a "public meeting". The law gives members of the public the right to attend and observe but not to speak.

The Parish Council provides an opportunity near the start of the meeting (also called the Suspension of Standing Orders) for the public to raise a question either relating to an agenda item, or potentially to be considered at a future meeting. This is limited to 10 minutes in total and a maximum of three minutes per subject. Those wishing to speak should indicate this with a show of hands or by advising the Chairman or Clerk prior to the meeting. The rest of the meeting you are likely to remain muted and only during specific items you might be invited to speak by the Chairman.

Please note Chairman is used as an official title and not intended to be gender specific.

St Mary's School News



At the time of writing, we are busy preparing for the reopening of the school for Nursery, Reception and Year 1 children; as per the Government advice. We are working hard following the DfE guidance, to ensure the return is as safe as we can make it for children and staff. It's been challenging but we are very much looking forward to seeing those children who will be returning. For those who remain at home we will continue to share work daily, via the home learning page on our school website.

We have continued to remain open during this period for children of key workers and vulnerable children. A big thank you to all the staff who have made this happen and we continue to thank those key workers who are doing such a fantastic job.

The teachers have set up a class email address so the children can message their teacher directly, and the class teachers have been calling children to have a chat with them, where the children have wanted it.

We continue to share lots of fun and stories via our school Facebook page. We have recently held a staff baby photo competition, and the recreations of some of the photos were very funny.

For those parents who have children starting Reception with us in September, we continue to work through the transition plan in these unprecedented times and will share information with them as we have it. Hopefully they have been receiving the school's newsletter which has been emailed to them. If you do have any questions, then please do not hesitate to contact Mrs Topliff at generaladmin@clophillstmarysschool.co.uk

Our Value for June is *Honesty*.

Honesty means telling the truth but it also means doing the right thing i.e. not stealing or cheating. There should be no difference between what you think, what you say and what you do. If you are being honest you will speak what's in your mind and do what you say you are going to do. This should of course be used to do good and not be used in a negative way. Honesty is a clear conscience.

At home you may like to examine the above 'thought for the month' and discuss its meaning. Everyone in the family should make a special effort to be honest with each other this month and in the future. Honesty should be acknowledged in a positive way.

You could also help your child to find out why this plant is called 'Honesty':



Did you know there are free on-line training courses available at Future learn. www.futurelearn.com The training is free - you can stop go and pick up at a time convenient to the learner, modules are bite-size and there is a lot of choice.

Parish Registers for June

1820

Baptisms

Jun 20 James son of James and Elizabeth Odel (sic)

No marriages or burials recorded

1870

Baptisms

Jun 26 Sarah daughter of Sarah Roberts, single woman

No marriages or burials recorded

1920

Baptisms

Jun 06 Ernest Frank son of Walter and Harriet Young, father a butcher
Josephine Linda Mary daughter of Frederick and Florence Lammas
Doris Eva daughter of Bertram and Fanny Harris Richardson, father a soldier

1920 (continued)

Jun 20 Gwendoline Mary daughter of Herbert and Bertha Izzard father a motor driver
Sidney Vernon son of James and Annie Jones, father a Civil Service Clerk

No marriages or burials recorded

1970

Marriages

Jun 20 Philip James Palmer, 19, agricultural worker to Christine Elizabeth Porter, 19, window dresser

Burials

Jun 24 Florence Ada Heathfield, 59

REGISTERS FOR MAY 2020

Burial at the Old Church

May 18 Irene Collis, 66

Village groups

Beverley Court

Brownies

Clophill Community Care

Clophill Heritage Trust

Clophill Preschool

Clophill St Mary's C of E Lower School & Nursery

Clophill Toddler Group

Clophill United Charities

Conservation Group

Flower Club

Friends of the Cheshire Home

Funzone After School Club

Greensands Community Choir

Indoor Carpet Bowls

Messy Church

St Mary's PTA

Scouts and Cubs

Tea and Chat

Village Hall Booking Secretary

860920

<https://enquiryym.girlguiding.org.uk>

Duty Contact 07791 773705

Ali Bradbury 07894 710001

Imogen 07765 887868

Chris 07936 006381

Emma Topliff 860206

Hannah Compton 07535 705711

Richard Pearson 861110

Brian Adams 862297

Gillian Hill 860539

Sue Pearson 861110

07903 167493

Luke Howard 07975 520085

Tony Meredith 860754

Victoria Higgins 07920 568861

victoriajhiggins@hotmail.co.uk

Julia Skelton 07774 993973

www.scouts.org.uk/get-involved

Anita Errick 860695

Marilyn Browning 07821 643936

Useful numbers

Gas (Emergency)			0800 111999
Electricity (Emergency)			0800 7838838
Emergency Fire/Police/Ambulance			999
Water/Sewage (Anglian Water)			0845 7145145
Telephone	(Customer Services) 150	(Faults)	151
Highways Department (Central Bedfordshire Council)			0300 3008049
Benefits Agency (Bedford office)			01234 361500
Registrar's Office (Births/deaths/marriages)			0300 3008089
Rail (Enquiries)			0845 7484950
Buses 01234 262151	(Link A Ride) 01525 840511	(Flittabus)	01582 406561
Luton Airport			01582 405100
Swimming	(Flitwick) 01525 717744	(Robinson Pool)	01234 212479

LOCAL GOVERNMENT

Central Beds Offices (Chicksands)			0300 300 8000
Mid-Beds MP		Nadine Dorries	01462 811992
Central Bedfordshire Councillors		Michael Blair	01525 404513
		Paul Duckett	07988 184061
Clophill Parish Council	(Clerk) James Stirling	clerk@clophill-pc.gov.uk	01462 887226

HOSPITALS

Bedford (North & South)	01234 355122	Admissions	01234 261150
		Appointments	01234 359012
Luton & Dunstable			0845 1270127

DOCTOR'S CLINICS

Ampthill	(Houghton Close) 01525 300898	(Oliver Street)	01525 631395
		(Greensands)	01525 631390
Shefford	Enquiries 01462 818620	Appointments	01462 810034
Barton 01582 528700		Flitwick	01525 715300

POLICE

County Police HQ		Non Emergency	101
Ampthill Station			01234 841212
			101

CHURCHES

St Mary's Parish Church		RECTORS POST VACANT	
	(Church Warden) Rosemary Ilett	mandrilett@onetel.com	01525 860274
St Francis RC Church, Shefford		Ian Gordon	01525 860875
Clophill Methodist Church		Jim Davies	01525 860829
Baptist Churches (Ampthill) Doreen Gibbs	01525 862424	(Maulden) Ian Crawford	01525 634325
		(Shefford) Hazel Arnold	01462 812564

SCHOOLS

Clophill St Mary's C of E Lower School & Nursery (Headteacher Mrs K Bingley)		01525 860206
Harlington Upper School , Harlington		01525 755100
Preschool clophillpreschool@gmail.com	(Chris) 07936 006381 or (Imogen)	07765 887868
Redborne Upper School , Ampthill		01525 404462
Robert Bloomfield Middle School , Shefford		01462 628800

Painter and Decorator

Call Chris : 07950714579



*do you want your
home brightening up?*

all interior & exterior work

no job too small!

free no obligation quote

*25 years experience
& fully insured*

*facebook: @christopherthepainter
email: chris.minihane@btinternet.com*

JK Garden and Landscape Services Ltd



We offer...

full landscaping service

patios

fencing

decking

new lawns

driveways

all garden maintenance

Contact us on **0791 2028254**
or at **jkgardening@hotmail.co.uk**

You can also find us on Facebook

TALKEASY Coaching

***Do you want to make a fundamental
difference to your life and don't
know where to start?***

My name is Lynn and I am a Life Coach.

I have extensive experience helping
with every aspect of life, e.g. support with
family issues, or your own financial,
emotional, or physical wellbeing.

My most recent project has been supporting
young teenagers in their place of education.

Be the change in your life
and contact me for a free,
no obligation chat.



07557948644

01525860384

lynncllements87@gmail.com

Tammys' Talons

Nail Technician

Gel. Manicure and Pedicure

IZABELLEHAMMON
INSPIRING FACILITY EXPERTISE
CALGEL IZ by OPI

Tammy Kirby

Clophill, Bedfordshire, MK45 4AW

Tel : 07968379309

tammystalons@gmail.com

Linda Allsop

PHYSIOTHERAPY



Chartered
Physiotherapist
with over 30 years
experience in both
the Private Sector
and the NHS.

Home visits
available.
Based in
Graverhurst

01462 711978 | 07989 257026
www.linda-allsop-physio.co.uk
lindaallsop@btinternet.com

USING PARABEN & SULPHATE FREE, 100% VEGAN,
CRUELTY FREE PRODUCTS



A Cut Above Hairdressing

by Rachel

In the comfort of your own home
cutting & styling specialist

call or text : 07896009382
facebook: acutaboverachel

Salon experienced
Fully insured
Fully qualified to Level 3 Standard.

E.T. Accountancy Services

Experienced Chartered Accountant and
Chartered Tax adviser based in Clophill
providing a full range of accountancy
and taxation services to businesses
and private individuals.

To arrange a free initial consultation
please telephone me on 01525 590465
or email emma@et-accountancy.co.uk

*Chartered Accountant and
Chartered Tax Adviser*

Emma Thoulass FCA CTA
www.et-accountancy.co.uk
01525 590465



Professional friendly accountancy services

Fully qualified,
Free initial consultation,
competitive fees
Sole traders, Ltd companies,
bookkeeping, payroll,
CIS, VAT & Tax.

sally@sjtax.co.uk
01234 831997
07899 808592

Partridge Flooring

Your Local Flooring Service - 45 Years Experience



For free estimate and advice

☎ 01525 860884

☎ 07967 611883

✉ partridgeflooringservices@gmail.com

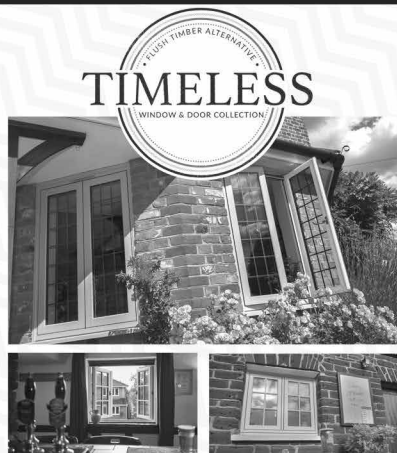
Supply & Installation

- Carpet
- Karndean
- Amtico
- Wood
- Laminate
- Vinyl
- Screeding
- Plywood

 **amtico**

 **Karndean**
Design flooring

Kings Windows

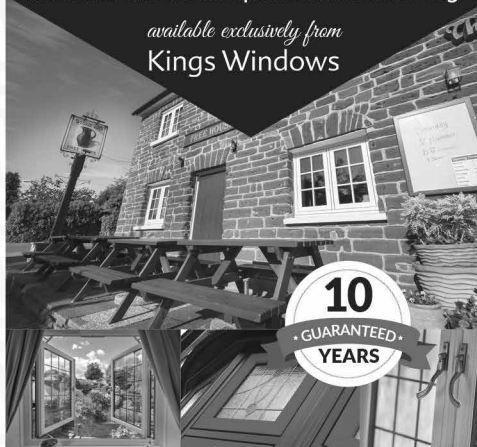


Available in a range of traditional colours
Choose classic joints to look like wood
Stunning handle options

TIMELESS FLUSH TIMBER ALTERNATIVE WINDOWS

as seen in The Old Compasses & The Stone Jug

available exclusively from
Kings Windows



01582 882 800

www.kingswindows.co.uk

GCC
Greensand Community Choir
LOVE SINGING!
sing with an exciting local choir...



Come along to your local **community choir**,
for men and women of all singing abilities!
Mondays, 8.00-9.30 pm at St. Mary's Church, Clophill.

- Come and sing with an exciting new local choir led by a professional musical director
- Uplifting music in a variety of styles: musicals, classic pop, folksongs, sacred and world music
- Welcoming singers of all abilities - no audition, no need to read music!
- New members - come along any time for a free taster



Enquiries to:

greensandcommunitychoir@gmail.com

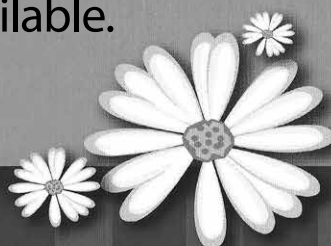
or ring Luke on: 07975 520085

Daisy Cooper

Spring cleans, one off cleans and
moving home cleans all available.

Daisycooper22@hotmail.co.uk

Please call 07913 332914



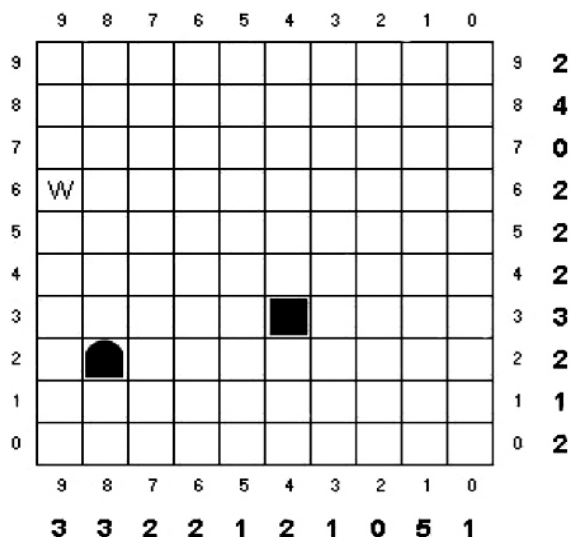
Keeping your home as fresh as a Daisy

Hypnotherapy...*the Mindful Way*

For help with: anxiety, stress, IBS, migraine mindful eating,
insomnia & many other conditions. For more information or
an initial consultation please contact Ann. Tel: 07791171980

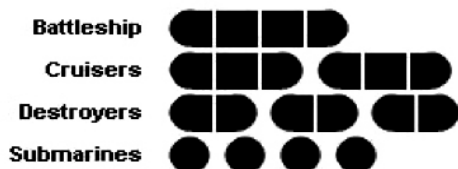
Email: enquiries@pathwaysofmindfulness.co.uk
www.pathwaysofmindfulness.com





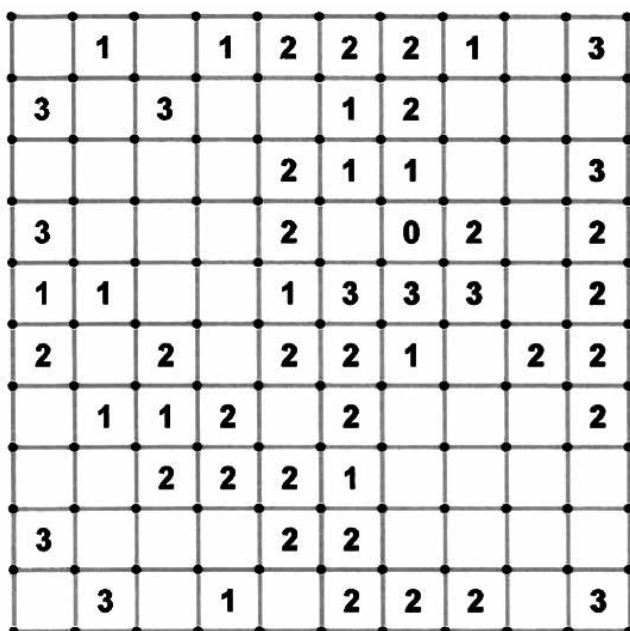
Battleships

Find where each of the ships are using the numbers to the right and bottom of the grid to work it out. The first square with Water is marked for you with a "W". Ship cannot touch another, even diagonally



Slitherlink

Draw a single continuous loop, by connecting the dots. No line may cross the path of another. The figure inside each set of any four surrounding dots indicates the total number of surrounding lines



MEDIUM

9		5			1			
4		3	9				5	
	8		7	5				
	5	1						3
8	4						7	6
6						1	8	
				9	6		1	
	9				3	8		7
			1			5		9

HARD

	6							
9			3	6	8	4		
7				1		9		
1					9	5		8
	3	6				7	9	
8		9	7					2
		4		9				5
		1	2	5	6			9
							1	

SUDOKU (above)

To solve this puzzle each 3 x 3 box, each row and each column must contain all the numbers from 1 to 9.

Enjoy these Puzzles

KAKURO (right)

To solve kakuro you must enter a number between 1 and 9 in the empty squares without repeating a digit. The clues are the numbers on the black squares and are the sum of the solution numbers. The clue pointers indicate the direction of the answers. A block of 2 squares with a clue of 3 will solve as 2,1 and a 5 will produce 4,1 or 2,3. A 4 can only be 1,3 never 2,2.

		26	8	10						16	12	
	23					20	3	11				17
20					35							
6			15	9	28					15		
35								7	7			
		11				8		8			35	
	20						17					34
7						3						
30					3			8	12	17		
10					10	18		29				
14			14	8			11					
30									11	13	7	
	22				24							
	18	11				6				17	10	
6					12	7						
11			6						13	4	3	
39								10				
	3							19				

ADAM IN YOUR GARDEN

**TREE SURGERY, HEDGE TRIMMING,
TURFING, FENCE MAINTENANCE,
DECKING, PATIO CLEANING**



Qualified, Fully Insured, Competitive Rates
Free Estimates

TEL: 01582 518954 MOB: 07828 490360

Web Site: www.adaminyourgarden.co.uk



ACCOUNTING SERVICES

Providing a **Much Better** service for **Mid Beds** since 2000

If you are **Self-employed** or a **Small Business** and require assistance with

Accounts, HMRC tax returns, VAT

we offer a total confidential service at competitive rates

Contact T: 01525 861087 M: 07714189994 E: mbaccounts@btinternet.com

Telephone
**01525
860526**

The Stone Jug

A Free House

BACK STREET, CLOPHILL

A Proper Pub for Proper People

A family run village 'boozer' serving up great value, quality lunches that will fill you up without emptying your wallet! A pub is for 12 months of the year, 365 days and we're here for you on each and every one of them!

- 5 real ales, including 3 guest pumps that change frequently (see our Facebook page for details)
- selection of wines and Prosecco by the glass – or even better, by the bottle
- home-cooked lunches Tues-Sat, 12pm-2pm



REMEMBER OUR MOTTO

"A VISIT TO THE JUG IS BETTER THAN GOING TO A PUB"

CHEERS JOYCE, VIKKI & MARK

www.stonejug.co.uk

www.facebook.com/thestonejugclophill

OVENCLEAN®

The original oven cleaning specialists

All types cleaned:



- Ovens
- Grills
- Ranges
- Hobs
- AGAs
- Microwaves
- BBQs
- Extractors

Fully insured, and DBS Police Checked

For a quote call Clive direct on: 07949 233089 or phone the Office on 0800 840 7127



www.ovenclean.com



Ovenclean Clive Burgess

Warm Property Services



Heating



Plumbing



Bathrooms



Maulden based. British Gas trained engineer with more than 10 years' experience. Discount for over 60's.

Free no obligation quote & advice.



Boiler and heating installations



Power flushing



Landlord Safety certificates



Bathroom suites



Plumbing and drainage



Fires and cookers

07716 478794 01525 839342
www.warmprops.co.uk

THE BLUECAT



LUXURY CATTERY

Tel: 01525 861416
www.thebluecat.net

Find us on Facebook @thebluecatcattery or email us at enquiries@thebluecat.net

The Bluecat is a luxury cattery set in the quiet area of Jacques Lane in Clapham. With just 14 cat chalets, we have time to fuss, pamper and play with your cat to its heart's content whilst in our care. Please call for further information.

Misty Double Glazing?

Over 30 Years experience. FREE Quotes

Over 30 Years experience. FREE Quotes

**KEEP YOUR WINDOW FRAMES...
... WE JUST REPLACE THE GLASS!**

• UPVC • Aluminium • Or Wood

Because we replace just the glass the repair is a Fraction of the cost of a complete replacement window.

BEFORE



AFTER



mistydoublinglazing.co.uk
QUALITY GLAZING SERVICES

01525 876808

WE ALSO REPLACE BROKEN...

**• Glass • Handles • Hinges & Locks
AND REPAIR...Patio Doors & Conservatories!**

THE SECRET OF GREAT HAIR

The secret of great hair is a great haircut. *By Kevin Reynolds*
Have your hair done in the comfort of your own home.
Free consultations available.

Kevin ran his own salon in the West End of London until he moved to Bedfordshire 15 years ago. Whether you're looking for a re-style, a new colour, original hair ideas, something cutting -edge or something familiar, you'll be safe in Kevin's hands.

Call us now for an appointment

07970 467805

kevinreynolds

Hair Stylist

reynoldskevin59@gmail.com



Nicola Rayner Fitness

Feel great in 2019!

BOXWORX

Fun, effective pad work based boxing class for a great stress relieving total body workout!

Wednesday 8-9pm

Clophill village hall

Limited spaces available booking essential

Pilates & Men's Core Strength

Improved core strength and posture through low impact stretching and spine safe conditioning exercises. Delivered with a positive, caring approach in a fun and friendly environment to leave you feeling energized!

Classes in Flitton & Silsoe

Limited spaces available booking essential

Classes also in the surrounding area

Legs, Bums & tums

Zumba

Ladies Boot Camp

For full timetable or to book contact Nicola

fitone@live.co.uk 07801 510988



be hot!

with
Slimming World

TUESDAY

Silsoe

Silsoe Community Sports Centre
Chestnut Avenue, MK45 4GP
5:30pm & 7:30pm

Tel / Text: Liz for details
07973 532793

slimmingworld.co.uk
0344 897 8000   



Welcome to Clophill St Mary's C of E Lower School and Nursery

A small, friendly, Voluntary Aided Church of England Lower School, graded 'Outstanding' by Ofsted, with close links to the local community.

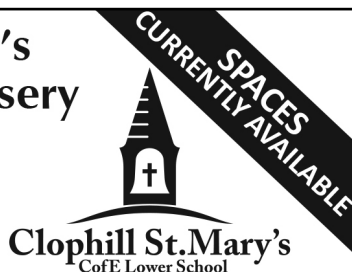
St. Mary's is a Values based school taking children aged from 2 years 7 months to 9 years and providing them with a framework for living, tightly woven into the positive Christian ethos of the school.

Breakfast and after school care for all ages.

Acorn Nursery

for preschool children aged 2 years 7 months to 4 years with breakfast and after school care available.

Providing 30 hours free childcare entitlement.



**NEW NURSERY BUILDING
OPEN NOW!**

To arrange a visit, please call us 01525 860206
or email: generaladmin@nursery@clophillstmarysschool.co.uk
For more information visit: www.clophillstmarysschool.co.uk



WE ARE HERE FOR YOU

Now is the ideal time to book your 2021 holiday

**BOOK LOCAL NOW,
TRAVEL THE WORLD LATER**

Monday to Friday 9am to 5pm
Saturday 9am to 4.30pm



01234 326778

www.selecttravelholidays.co.uk
sales@selecttravelholidays.co.uk



BOOK WITH CONFIDENCE
ABTA & ATOL protected



ARCHITECTURAL DRAWINGS AND BUILDING DESIGN SERVICES

Professional Architectural design services provided for all types of private residential building projects including extensions, loft/garage conversions, garages and outbuildings through to new build dwellings with all necessary council approvals obtained.

For free estimates and advice contact Steve Coates on Flitwick 01525 862457 or 07960 215053.
stevecoates72@gmail.com

S & S Coates Surveying & Design, Unit 4 The Courtyard,
r/o 13 High St, Clophill, MK45 4AB.



CBuildE
chartered building engineer



A L & G ABBOTT

F u n e r a l D i r e c t o r s

~ Established 1832 ~

WITH YOU WHEN IT MATTERS MOST

An independent family business continuing to provide a caring & professional service to Bedford, Kempston & the surrounding villages.



- 24 Hour Personal Service
- Pre-Paid Funeral Plans
- Private Chapels of Rest
- Green Burials
- Home Arrangements
- Civil Services Available
- Bereavement Listening Service (Free to our families)



T 01234 843222

www.abbott-funerals.co.uk support@abbott-funerals.co.uk

150 BEDFORD ROAD, KEMPSTON, BEDFORDSHIRE, MK42 8BH

AIMS

Tim Kemp BA FCA
Top Barn Rectory Road
Steppingly MK45 5AT

TEL/FAX : 01525 717141
MOBILE : 07900 823 012
www.aims.co.uk
e-mail: timk@aims.co.uk

- ♦ **Professional** service providing for all your accounting and tax needs
- ♦ **Practical** advice based on 20 years experience in **running** businesses
- ♦ **Personal** approach with fixed fees relevant to the work **you** need
- ♦ **Friendly, local** accountant supporting the community for over 20 years

Please call for a free, no-obligation initial meeting

ACCOUNTANTS FOR *business*

Hills-Howson Financial Services

Financial adviser appointments available in your home or our office

The Old Post Office
53 High Street
Clophill
Beds MK45 4BE

Tel: 01525 861803
www.hills-howson.co.uk
hills.howson@btconnect.com

Including:-

Investments

Pensions

Protection

Annuities



W&H PEACOCK

AUCTIONEERS & VALUERS

Weekly Auctions

Visit the Bedford Auction Centre to enjoy the excitement of a live auction.

**Antique & Modern Furniture • Clocks • Books
Ceramics & Glassware • Pictures & Prints
Bicycles • Jewellery & Watches • Collectables
Garage Tools & Equipment • Household Electrical Items
Office Furniture & Equipment • Retail Products & Stock
Vehicles • Horticultural & Commercial Equipment
Building Materials • Garden Furniture & Effects**

Eastcotts Park, Wallis Way, Bedford MK42 0PE **01234 266 366** peacockauction.co.uk

THE COMPUTER MAN



Got a problem with your computer and don't know what to do? Suffering with a virus or spam?

Don't hesitate! Ring your local computer expert

**Remote repairs or home visits
(Day, evening & weekend)**

**Lap top/desk top loan
(Free pick up & drop off in local area)**

Comprehensive health check from £35 (**Special Offer** £35 - normally £40)
Refurbished fl at screen available from £15 • Refurbished base units available from £99



Contact Stephen Amos
07976 718567
the.computerman@ntlworld.com





rincontuition - Spanish & Maths

Expand your knowledge. Boost your confidence

Phone 01525 860743 - Mob 07952 667814

Exam techniques and preparation. Revision and practice papers: SATs, 11+ and GCSEs

Spanish for business or pleasure, all levels. GCSE & A-levels

Skills development: conversation, reading and writing

Maths: Boost your confidence and abilities

KS1, KS2, KS3, SATs, 11+ and GCSE practice papers.

References available. Reasonable rates

Enquiries: 01525 860743 - 07952 667814

rincontuition@yahoo.com



LIZZIE BROWN PET CARE & HORSE GROOM SERVICES



**DOG WALKING
PET POP-IN & FEEDING
PET/HOUSE SITTING
EQUINE GROOM***

(*BTEC Cert Equine Management)



Lizzie Brown 01525 862459 / 07500 989 700

Reliable friendly local service

Short notice available (no contract commitments)

Insured Quality references available CRB checked*

*(Disclosure & Barring Service)



Hairs & Graces

Unisex Salon



Wet Cut £19
Cut & Blow Dry £30
Colours start from £27
Special OAP rates

Opening Hours:

Monday	9.30-2.00
Tuesday	9.30-5.00
Wednesday	9.30-5.00
Thursday	9.30-8.00
Friday	9.30-8.00
Saturday	9.30-4.00

Zoe, Donna, Gemma
and Amanda look forward
to welcoming you.

Ring now to book an
appointment.
Appointments also
available with our Barber.

Burgoine Business Centre, 117 Clophill Road, Maulden MK45 2AE

01525 861491 • Loads of free parking



GARDEN DOCTOR

Rob McLeod

Pruning Specialist

Professional, Local, Experienced

- * All tree and hedge work undertaken
- * High standard of work
- * Waste material recycled for compost
- * Free Quotations
- * Local, reliable service you can trust

Tel: 07763 239340 or 01525 861568

email: rob@gardendoctor.org.uk

www.gardendoctor.org.uk

Call the Garden Doctor and bring Good Health to your Garden



Hedging & Pruning
Shrubs & Fruit Trees
Tree Surgery & Removal
Fully certificated and insured



We'll get you up and running!

We offer the very best physiotherapy care from a friendly approachable team of nine highly trained Chartered Physiotherapists all members of the Health Professionals Council

Expert treatment including:

Neck/Back/Hand and Tennis Elbow Pain
Headaches/Migraine/Sciatica
Incontinence/Pelvic/SIJ/SPD/Pregnancy Back Pain
Sprains/Strains/Torn Ligaments
Whiplash/RSI/Osteoporosis/Sports Injuries

Specialist Physiotherapists:

Neurological, Paediatric, Vertigo and Dizziness

We also offer complementary treatments:

Acupuncture, Reflexology, Massage, Indian Head Massage,
Chinese Herbalist, Lymphatic Drainage and Pumps



Tel: 01525 720882 www.chartered-physiotherapy.co.uk Email: amphillphysio@btconnect.com
7 Station Square, Flitwick, MK45 1DP



The Happy Place.co.uk

On the Green beside the Post Office every Friday, 3.30-7.30pm

We are your local mobile fish and chip van, we have been parked on the green every Friday for the past 6 years. We serve only the highest quality produce, cooked fresh to order and served to you by our friendly staff.

Why don't you pop down and come and Try Our Fry!

To avoid waiting in the cold, give us a call to

place your order on: 07833 786108

A big thank you to all our customers who have loyally supported us over the past couple of years.

Chapman & Kirby Heating

Gas, Plumbing & Heating Installations

Gas Safe Registered

Boiler Servicing & Maintenance



Call us now

Tel: 01525 861255 Mob: 07831 132308

Email: info@chapmanandkirbyheating.co.uk

1C, Old Silsoe Road, Clophill, Beds., MK45 4AR



NEVILLE FUNERALS

We take care of the details, so you can say
goodbye the way you want to.

NEVILLE. Because there is a difference.

AMPTHILL

The Old Church, Flitwick Road MK45 2NT

t: 01525 406132

e: ampthill@nevillefuneralservice.com

SHEFFORD

24 Clifton Road SG17 5AE

t: 01462 813258

e: shefford@nevillefuneralservice.com

www.nevillefuneralservice.com





Want the
best lawn ever?

Prices from
£15*
per treatment

What we do:

Our lawn experts apply bespoke, seasonal treatments to keep your lawn continually nourished and weed free. Whatever the size or condition, we ensure that every lawn receives the love and attention it deserves. Find out more and visit greenthumb.co.uk/treatments

Who are GreenThumb:

As pioneers in British lawn care, we are the UK's largest and most recommended provider with millions of treatments taking place across the UK every year

With over 30 years of experience, you can rely on us to provide your lawn with the very best care

For a **FREE** lawn analysis
call 01234 709 345 or email bedford@greenthumb.co.uk

   greenthumb.co.uk

*Based on a lawn size up to 40m²

Baths, Toilets &
Showers
Sinks and Taps
Guttering
Leaks and Burst Pipes
Drainage
Handyman jobs also



beta plumbing

Silsoe based
No call out fee – free estimates
Fully insured and guaranteed
No job too small
07720 723653 01525 864859
info@betaplumbing.co.uk
www.betaplumbing.co.uk



Washing Machines Dishwashers Dryers Electric Ovens Repairs Servicing Sales

A local family business offering
a quality service at a competitive price
Est. 1981

Tel: CLOPHILL 860148
or Tim Downing direct on 07969 545 276

A member of the White Goods Trade Association
Fully Insured

the
café

AT

W&H PEACOCK
AUCTIONEERS & VALUERS

Visit

www.peacockscfe.co.uk
for more details and to view
our current menu.

Eastcotts Park, Wallis Way,
Bedford, Bedfordshire
MK42 0PE

01234 266 366



**View the salerooms for our upcoming auctions
and then relax with a coffee and a slice of cake.**

Our unique café in Bedford Auction Centre with free wi-fi and
views of the salerooms, comfortably seats over 100 customers.

We serve cooked breakfasts, paninis and sandwiches, light
lunches and snacks plus a range of hot and cold drinks.

Senior Citizen discounts available

Open Monday to Thursday from 8.30am - 3.30pm
Extended opening on Friday to 7pm. Saturday 8.30am - 4pm
(Last orders 1 hour before closing)

LOCAL ALLOY WHEEL REFURBISHMENT


mintalloys
complete alloy wheel refurbishment

Tel:
01525
860069

Alloy Wheel Repairs

Diamond Cut Alloy Wheels Repaired On Site

Powder Coat Primers & Lacquers

Fast Turnaround Alloy Wheel Welding

Tyres At Competitive Prices

NEW for 2015 - 4 Wheel Alignment Service

www.mintalloys.co.uk

Root 'n Branch

Your Local Friendly & Reliable Gardener

All aspects of Garden Maintenance undertaken
• PRUNING • MOWING • WEEDING • PLANTING • HEDGING

Southfields, Shefford
email: whooley@hotmail.co.uk

Tel: 07771 537385

Public Liability
Insured



Conifer Kennels

Quality
BOARDING
HOLISTIC FOOD SHOP
GROOMING & BATH & SPRITZ
OFF SITE NATURE WALKS
DAY BOARDING
QUALIFIED TEAM

Coming Soon
LUXURY SUITES & RE-FURBISHMENT

www.coniferkennels.co.uk
01525 860339
THE CAUSEWAY, CLOPHILL, BEDS. MK45 4BA

nutriment
ENHANCED raw diet formula

Bulmer
Pet Food

PALEO
RIDGE

STUART DREW ELECTRICAL SERVICES

PART P CERTIFIED
MEMBER OF THE ECA
QUALIFIED TO 18TH EDITION

Consumer unit upgrades (fuse box). EV charging points. Additional lights and sockets.
Garden power. Electric showers fitted. Fault finding and electrical safety certification.

For a professional, courteous service with free estimates & all work guaranteed

29 Lincoln Way
Harlington
Beds
LU5 6NG

Fully qualified & insured
Over 30 years experience

Telephone
01525 875965
07941 812662



Compu-Doc

PC / laptop crisis ?

01525-402227

Call the Doc for -
Hardware & software
Diagnosis & treatment

john.stafford@compu-doc.co.uk

BURGLAR ALARMS

New Alarms Fitted or Upgrade Existing Alarms

BURGLAR ALARMS

We fit New Alarms - Wired or Wireless Systems
We can service and maintain your existing alarm

CCTV

We fit high quality systems to maximise your security.
Access your CCTV via the internet or mobile.

DOOR ENTRY

We fit a range of quality video and audio intercoms
to suit your needs.

*We are a family run business with over 35 years
experience in home security and crime prevention.*



www.maximumsecuritysystems.co.uk

Contact:

01582 864138 / 07746 111520

For a free quote and consultation

DAVID JAMES

WWW.DAVIDJAMESKITCHENS.CO.UK



SAVE £££
BUY DIRECT

Call 01525 722230

NEW

KITCHEN & LIGHTING
SHOWROOM

5 MINUTES
FROM CLOPHILL

DESIGN
MANUFACTURE
INSTALL

Pulloxhill
Business Park
Greenfield Rd
Bedford
MK45 5EU



V.J. EDWARDS

Plastering & Building Services

Certified Plasterer by British Gypsum – All works guaranteed for 2 years

- *Internal and external Plastering,*
- *Special Renders: Krend, monocuhe and Cemrend*
- *Stud Partitioning*
- *Plaster Boarding*
- *Garage conversions, Kitchens & Bathrooms and small extensions*



Telephone M: 07970 011605 H: 01234 740400



*Bathroom
Vogue*

EST.
1989

- Suppliers of traditional and modern equipment
- Working whirlpool & spa baths, power & steam shower systems on display
- Over 40 settings on display
- Complete installation service if required
- Personal friendly service from a family run business
- Wall and floor tiles
- Accessories
- Mirrors
- Bathroom furniture
- Heated towel rails
- Saunas
- Bathroom cabinets

SHEFFORD 01462 627002

www.bathroomvogue.com

Unit 4A, Shefford Industrial Park, St Francis Way, Shefford SG17 5DZ

Hire Clophill Village Hall



Wedding Receptions
Birthdays & Special Occasions
Dances and Discos
Club & Community Meetings & Activities

Phone: 07821 643 936

Mail: Clophill.villagehall@gmail.com Web: www.clophillvillagehall.co.uk

ROGER STOREY

YOUR LOCAL PAINTER AND DECORATOR

Friendly and Reliable Service

Many Years Experience

Please phone: **01525 861253** or **07800 777615**

ANDREW BAKER WINDOWS

9 SHEFFORD ROAD
CLOPHILL BEDS
MK45 4BT

SPECIALISING IN UPVC WINDOWS,
DOORS , CONSERVATORIES,
FASCIA , SOFFITS , GUTTERS AND
CLADDING. ALSO AVAILABLE FOR CARPENTRY
WORK. NO JOB TOO SMALL OR LARGE.

20 Years experience.
Free local quotes.

FENSA

Fensa Registered
FIVE YEAR GUARANTEE

Contact Andrew: 01525862804 / 07825017855

Email: abakerwindows@gmail.com

Advertisers index

Architectural Services

S&S Coates Surveying & Design 26

Auctioneers & Valuers

W&H Peacock 29

Bathroom Services

Bathroom Vogue 38

Builders & Carpenters

Stuart Benson Building Projects IFC
VJ Edwards 38

Car Services/Repairs

A&F Motors Ltd IFC
Mint Alloys 35
TC Coomber Car Services BC

Chimney Sweep

Poppins Chimney Sweep IBC

Cleaning Services

Daisy Cooper 19
Ovenclean 23

Computer Services

Compu-Doc 36
The Computer Man 29

Electrical Services

Stuart Drew Electrical Services 36

Financial Services

AIMS Accountants 28
ET Accountancy Services 17
Hills-Howson Financial Services 28
MB Accounting Services 22
SJ Tax & Accounting Services 17

Food and Refreshments

The Cafe at Peacocks 35
The Happy Plaipe 32

Funeral Services

AL&G Abbott, Funeral Directors 27
Neville Funeral Service 33

Garden Services

Adam in your Garden 22
Garden Doctor 31
Green Thumb Lawn Treatment 34
JK Garden and Landscape Services 16
Root 'n Branch 36

Health & Beauty

A Cut Above Hairdressing 17
Amphill & Flitwick Physiotherapy 32
Hairs & Graces 31
Kevin Reynolds 24
Linda Allsop Physiotherapy 17
Mindfulness Movement & Meditation 40
Nicola Rayner Fitness 24
Pathways of Mindfulness 19
Slimming World 25
Tammys' Talons 16

Home Improvements

Christopher The Painter 16
Partridge Flooring 18
Roger Storey - Painter & Decorator 39
David James Kitchens 37

Music and Entertainment

Greensands Community Choir 19

Nursery Schools

Clophill PreSchool BC
Clophill St Mary's C of E
Acorn Lower School and Nursery 25

Pet & Animal Services

Conifer Kennels & Cattery 36
Lizzie Brown Pet Care 30
The Bluecat Luxury Cattery 23

Plumbing & Drainage Services

Beta Plumbing 34
Chapman & Kirby Heating 32
Warm Property Services 23

Print Services

Fidelity Design & Print IFC

Public Houses

The Stone Jug 22

Repair Services

Tim Downing Repair Services 34

Security Services

Maximum Security Systems 37

Travel Services

Select Travel Holidays 26

Tuition and Coaching Services

Rincon Tuition (Spanish & Maths) 30
TalkEasy Coaching 16

Village Hall

Clophill Village Hall 39

Windows/Replacement

Andrew Baker Windows 39
AW Windows IBC
Kings Windows 18
Misty Double Glazing 23

IFC = Inside Front Cover IBC = Inside Back Cover BC = Back Cover



Mindfulness Movement & Meditation

...a class for all

Based on gentle yoga and incorporating the principles of mindfulness, this class teaches how to use the breath to stretch, move and relax. Held in the lovely barn at the Clophill Centre every Tuesday evening 7 - 8.15 pm

For further information or to book a place please contact
Ann on 07791171980 or email: ann.okeeffe@btinternet.com

Love reading Spotlight?

Don't forget to mention us when you use a business
that advertises in this magazine!



Poppins Chimneys

**Chimneys Swept
Wood and Multifuel Stove
Installation & Liners**

Great Service - Great Price!



01525 860424 or 07858 688785
mark@poppinschimneys.co.uk

**NO PRESSURE SALES – YOU DEAL WITH
THE OWNER FROM START TO FINISH**



- ✓ A-rated windows as standard
- ✓ Composite doors
- ✓ High security
- ✓ Bifolding doors
- ✓ Conservatories
- ✓ Fascias, soffits and guttering
- ✓ Insurance-backed guarantee
- ✓ Fensa certificate



Contact: ANDY WOOD

01582 536944 or 07796 272539
sales@awwindows.co.uk



See reviews from satisfied customers at awwindows.co.uk

Clophill Preschool

**Your local Outstanding Preschool,
based at Clophill Village Hall -
welcoming children from
2 years of age.**

We'll help your child to become an inventive
and creative learner. With access to a fantastic
outdoor area, our focus is on natural and
exploratory 'play with a purpose'.



**Call us today to find
out more:
07765 887868 or
07936 006381**

www.clophillpreschool.co.uk







- MOT'S CLASS 4/5L/7**
- CAR SERVICING & REPAIR**
- TYRES & EXHAUSTS**
- AIR CONDITIONING**
- DIAGNOSTIC CODE READING**

**Collection
& Delivery**
SERVICE AVAILABLE
Please ask

AMPTHILL
01525 406330

UNIT F, AMPTHILL INDUSTRIAL ESTATE, STATION ROAD, AMPTHILL, MK45 2QY