

Vol 43 | No.5

FREE

CLOPHILL SPOTLIGHT

JUNE 2021

**LOVE YOUR
LOCAL NEWS**

Wedding Stationery Suites

"personal branding for your wedding
'done for you'

to create beautiful memorable
wedding stationery suites
from 'save the date' to 'thank you'
no fuss, no frills and definitely no big bills,
just your big day all ways."



www.fidelityweddings.co.uk

Fidelity Design & Print - UNIT 7 KENNETH WAY, WILSTEAD IND EST, MK45 3PD



MOTORS LTD

Tel: (01525) 860292

Tel: (01525) 404919

208 Clophill Road, Maulden, Bedfordshire MK45 2AF
89 Oliver Street, Ampthill, Bedfordshire MK45 2SA

CAR AND COMMERCIAL VEHICLES
ALSO CLASSIC & AMERICAN CARS
SERVICING – REPAIRS – BREAKDOWN
SPRAYING – M.O.T.



Stuart Benson Building Projects

**Design, Build and Maintenance including Interior Refurbishments,
Kitchen / Bathroom fitting, Tiling, Flooring, Skirting boards, Doors
Garage conversions. Exterior Decking, Patios, Driveways
Garden Offices/ Sheds**

Tel: 07946 579862 or 01525 839878

Email: benson.stuart@gmail.com

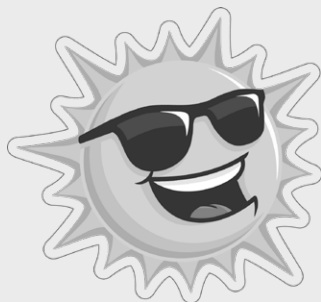


A word from the Editor...

Welcome to the June issue of Spotlight

Dear Reader,

Hurrah!! as I write this the glorious weather continues over the bank holiday weekend and looks settled for a bit longer; which raises all our spirits. Mine are raised this month as I am able to re-instate the Diary page. At last ☺ we have a few events coming up starting with Summer Afternoon Tea at St Mary's Church (see the poster on page 13).



We have a new member of the Spotlight team. Toni Elston has recently joined the distribution managers group. Welcome Toni, and thank you for volunteering and helping to keep Spotlight magazine going. Thank you also to Paul and Karen for stepping in last year to help.

We are still looking for a new treasurer to replace Richard Pearson on the team. After many years with us, sadly Richard has decided to step down in the summer. See over the page for more details.

Best wishes, Elaine



The magazine staff

EDITOR	Elaine Jones editorial@clophillspotlight.co.uk	07918 975823
ADVERTISING MANAGER	Emma Frost ads@clophillspotlight.co.uk	
DESIGN MANAGER	Grant Robinson	
DISTRIBUTION MANAGER	Toni Elston Phyllis Edwards, Paul Leckie	861813
TREASURER	Richard Pearson	861110

Deadline for articles is 20th of the month

You can also read Spotlight online
www.clophillspotlight.co.uk

SAVE YOUR SPOTLIGHT

New Treasurer wanted for your local village magazine

After many years, Richard is stepping down from his role as Treasurer for Spotlight, so we are looking for someone to take over.

This mainly involves the paying of invoices, and keeping the accounts and finances in order.

Can you help?

For more information please contact Elaine on
07918 975823 or **editorial@clophillspotlight.co.uk**



**Going...
going...
gone?**



Spotlight relies on volunteers to keep going.
We are looking to fill this role with a face to face handover and
visit to the bank once things are opened up more,
so probably a June timeframe.

**If you don't want to lose your village magazine
– please think about whether you can help.**

Come into the Garden

with *Kate Gardner*



June is a wonderful time in the garden. Flowers are starting to appear in abundance so that means lots of things to keep on top of in your garden. Usually come June, it's pretty safe to assume the frosts are behind us, so now is the time to plant out those varieties that have been brought on in the greenhouse or under protection. However, with the way the weather is going nothing is certain so keep an eye out for cold nights as some plants will still need plenty of protection.

Thin out hardy annuals (think **cornflowers**, **nigella** and **cosmos**) and you can be brutal as most of them benefit from spacing 30cm (1ft) apart. More room means more root, leaves and photosynthesis, which leads to bigger and better flowers and a longer life. Use pea sticks to support taller varieties such as cornflowers and **Ammi majus**.

Next spring's biennials, such as **wallflowers** and **honesty**, need time to establish. Both can be sown now, direct into a seedbed, spaced 10cm (2 inches) apart. Thin in three or four weeks to 30cm (1ft), and transplant to their flowering position in early autumn. If you are short of space these will be perfectly happy in pots in a sheltered spot until the autumn when they can then be planted in their final positions.

Fill any gaps in your borders with bedding plants, such as **salvia**, **begonias** and **pelargoniums**. Water them regularly, particularly in drier weather and in the days after planting. Watering in hotter months is always better done in the morning or evening, to avoid scorching plants in the heat of the day.

It's not too late to sow poppies and if sown direct now, many varieties flower within eight weeks. Poppies prefer to be sown direct rather than into a seed tray as they hate root disturbance. Follow the rule of the 4 T's to succeed with direct sowing. Sow into a fine Tilth, at the right Time (when the soil is warm and moist), sowing as Thinly as you can, and then Thin the seedlings to leave them spaced 10-12in (25-30cm) apart. My personal favourites are bright red ladybird ones with their distinctive black centre spot and the showy deep purple opium poppies with their silvery grey foliage.

Keep weeding and deadheading to ensure borders stay looking at their best. If you didn't do so in the spring, apply a mulch on moist soil. Watch out for aphids on susceptible plants, e.g., lupins. Spray with a soap-based insecticide if necessary, as it's not harmful to bees and other insects. Strong winds at this time of year can cause quite a bit of damage to taller perennials, so it's essential to keep staking and tying them up to help prevent damage, especially with vulnerable plants such as delphiniums and peonies. Pulmonarias may well be looking a little sick from mildew so cut back all the leaves, then feed with a slow-release fertiliser. Divide congested clumps of primulas and primroses and replant now remembering to water well if the soil is dry.

Deadhead **roses** as often as you can now that they are flowering. Cut the old flowers back to a bud or leaf below to help promote the formation of axillary buds, then more flowers will follow. Rambling and climbing roses will be growing rapidly so tie them in regularly. Spring shrubs such as **Weigela** and **Philadelphus** that have finished flowering can be pruned now. If your plants are old and quite congested, then it is a good time to remove some of the older stems near ground level. These will also benefit from feeding with pelleted chicken manure or a proprietary general purpose slow-release feed.

Happy Gardening

St Mary's School News

We had a busy May at St. Mary's.

It started out quite sporty! Rowan (Year 3) and Oak (Year 4) continued to enjoy their Cricket sessions on Monday morning, led by Howard Moxon from Flitwick Cricket Club and Birch to Oak (Years 1 to 4) took part in a fantastic intra-school activity/competition day led by Redborne Sports Partnership. The children loved joining with the different athletic activities, despite the cold and wet weather! Children from Year 3 and 4 also had the opportunity to take part in Bikeability – learning lots about how to look after bikes and ride them safely.

We also fund-raised – participating in the NSPCC Number Day. Children across the school, from Acorn Nursery upwards, enjoyed different Maths activities whilst wearing their own clothes. We raised £80 for this important charity.

Individual and class photos were taken. To adhere to Covid.19 guidelines, our class photos were taken outside this year and Jake, the school dog, also made an appearance (see below)! There is now a beautiful new whole-school montage hanging up in my (Mrs. Bingley's) office.

May ended with a Governor's Day, with one of the main areas of discussion being the new Early Years Foundation Stage curriculum which comes into effect in September 2021. We are very excited about developing our Early Years provision in Acorn (Nursery) and Chestnut (Reception) further – continuing to ensure they remain outstanding settings. As we join June after our Half Term break, we are hoping to continue to ease Covid.19 restrictions within school. At the time of writing, we have already become Key Stage bubbles instead of Year Group bubbles within lessons and we intend these to extend to all clubs, playtimes and lunchtimes when we return in June.

We will also welcome our School Improvement Advisor and School Improvement Partner into school to monitor our practice – the monitoring and evaluation cycle never stops at St. Mary's – even during a pandemic 😊.

Please regularly check out our Website - <https://www.clophillstmarysschool.co.uk/> and Facebook page - <https://www.facebook.com/clophillstmarysschool> for more news and information about our wonderful school.



Jake (the school dog)

As I write, our School Dog Policy and Risk Assessment has been created and shared with parents. Jake has started having interaction with individual pupils and will continue, in June, to listen to readers and attend our Time to Talk sessions. These are led by Mrs. Burraway weekly for pupils requiring Wellbeing support. As stated above, Jake enjoyed being part of our school photos in May. He took part in the Acorn Nursery class photo and even had an individual one taken so he can join our staff board in the main entrance hall. What a handsome chap he is!



Acorn Nursery News

We are delighted to have recently gained the MySmile Accreditation!

This is a quality mark awarded to settings who implement steps to provide a tooth friendly environment for the children they care for. We have successfully promoted dental checks for children, advocated the importance of a regular brushing programme for children (providing age appropriate toothbrushes and toothpaste and brushing charts), demonstrated that we provide only tooth friendly drinks and snacks, and adhere to a tooth friendly celebration policy; as well as training all of our Nursery team.

We are very proud of our children, parents and staff for their fantastic efforts working together to gain this award. Oral Health is an addition to the new Early Years Foundation Stage Curriculum effective from September 2021 and our experienced Early Years Team have been busy working on this and other initiatives to support all of the changes.

Being a fully integrated part of our school is so beneficial to our Nursery children throughout the year, for example - we start our Phonics programme in Nursery that children follow throughout their school journey. We are so pleased to have restarted mixing regularly with our Reception Class, which undoubtedly aids those children transitioning to our Reception Class in September but also enables older children to practice values of Responsibility and Respect with younger children who, in turn, learn from them.

Our Nursery setting is AMAZING! If you are interested in a Nursery that introduces Values Education at an early age and is dedicated to supporting each child to reach their full potential, please contact Mrs. Hayes at

nursery@clophillstmarysschool.co.uk or call 01525 860206 and press 2 for the Nursery.

Our Value for June is *Humility* (Selflessness and Service)

Thought for the month: 'It is far more impressive when others discover your good qualities without your help.'

Humility is to have a humble attitude – avoiding 'showing off' and being boastful.

Through learning about how to live the value of Humility, we will also consider how this helps us to be Selfless and provide Service to others.

In School, we will listen to Bible and other stories to show us different examples of how we can demonstrate Humility. We will also emphasise the close link between the values of Humility and Friendship by pointing out that self-importance and boastful behaviour will not attract friends. We want our pupils to have high self-esteem so we will emphasise how they can be proud of themselves and their achievements without boasting or undermining others, using their skills to demonstrate selflessness and serving others.

At home, you may like to look at the story of 'The Tortoise and the Hare' together as a family and talk about the moral behind the story. You could encourage your children to acknowledge the things they are good at, be proud of these things and think how they can use their strengths to help other people. Look out for times when children are helpful around the house without being told or expecting a reward 😊.

Clophill Preschool News

Hi everyone,

We have seen every sort of weather this past month, from sunshine to rain to wind to hail. It's been quite exciting waiting to see what each day will bring and we have been outside enjoying all of it. It has really helped our allotment to get growing as well as our nature garden. We have planted potatoes and runner beans and weeded the beds. The children have the responsibility to keep the chickens fed and their coop clean and Rocky the cockerel has settled in nicely. We made a new bug house for the nature garden and watched the tadpoles squiggle about in the pond. We got the chance to show our allotment and nature garden to Erika from the Greensand Ridge trust when she popped in to hand us our certificate for winning the Champions scheme. She also took some footage of the setting and children, which we hope to share soon on our Facebook page.



There has been a lot of letter and phonic work going on in preschool as the children drew letters in salt, wrote their names on labels and worked hard to correctly form them all. Julie has been helping to get those little fingers nimble and able to do writing by having a sewing and crochet club, these intricate activities have been brilliant at helping the children develop fine motor manipulation as well as honing their concentration and focus skills.

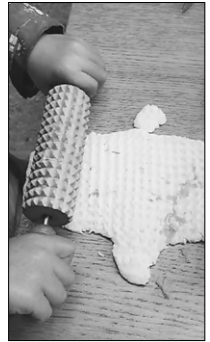
The children have also used saws, built dens and cooked s'mores over the fire.

Our mud kitchen has been enhanced by lots of rain recently and there has been a lot of jumping in the mud pit. Children have been mixing and

stirring creating their own 'choco mocha' and 'soups' using mud, accessing the water butt and adding a selection of plants from our herb garden, yum! The herb garden has also been used in our playdough. Children make their own playdough using their maths skills to follow the recipe and mix in different smelling herbs they pick themselves, a great way to learn identification of plants and use their senses.



We have been working with our parents whose children are going off to school this September, we had a great virtual meeting and have been in contact with all the schools inviting the reception teachers in. We look forward to meeting those teachers that have agreed to come. One of our parents asked us did we think the experience of learning through nature and the freedom that brings our children would be detrimental to them, when in September they will be in the relative confines of a traditional classroom environment. It was an interesting question and one we had already considered, our response was: our children are getting a comprehensive education that happens outdoors allowing a range of experiences in the fresh air through nature, connecting the children inextricably to the earth and their natural environment, how can that not be a great experience?



Children learn all the skills they will need for the classroom and so much more: listening skills, focus, problem solving, social awareness and collaborative skills, phonics, maths in all its many forms and fantastic creativity all of which allows children to explore and test their own limits and find a sense of self. We can't think of a better way to get 'school ready'.

Our Stay & Play sessions on Tuesdays 9:30-10:30 and Thursdays 1-2 are proving to be very busy. It's great getting children and parents in, interacting, engaging and making friends. We have once again held sessions over the half term break to offer a safe and familiar space for families to come and meet in the fresh air. Our community allotment plan is starting to take shape with the support of the Village Hall Committee and the RHS Grow Social scheme. To help raise funds towards some raised beds, fencing and benches we have a Happy School Bags collection on the morning of Wednesday 9th June. If you have any second-hand clothing in good condition, paired shoes, belts, handbags, hats, scarves or jewellery you would like to donate; please put it in a bin bag and drop to 57a high Street or pop up to preschool when we're open. We really appreciate your support for what we hope will be a fantastic project for our village.

Imogen, Chris and the team

www.clophillpreschool.co.uk clophillpreschool@gmail.com



Clophill Toddler Group News



It has been so lovely to welcome so many of you back in the past few weeks! Our booking system has been running smoothly and we are excited to hopefully be able to have even more of you at our sessions after the half term when the government restrictions relax once more.

If you are interested in attending our group, we are located at Clophill Village

Hall on a Friday at 10am until 11.30am. Currently as mentioned above we run a booking scheme, details of which can be found on our Facebook page. Just search for "Clophill Toddler Group" and you will find us!



We have a designated baby safe area for smaller babies, with a soft floor, safe chairs, mats and toys. Role play areas with a kitchen, dolls and plenty of fancy dress, a new themed craft each week, a large train table, slides, seesaws and so much more!



Most importantly we are a super friendly group, so you can come along knowing that you will be welcomed.

This term we created a way to fence off the patio once more for our sessions, meaning that we could use the outdoor space during the sunnier days again. The children have loved the space to race around in the ride on cars and chase each other around.

The train table was refurbished, with a lick of paint and extra track and we have enjoyed some fabulous home-made playdough, created potato paint prints and our very own paper gingerbread people with googly eyes and tissue paper outfits!

Message us on Facebook: <https://www.facebook.com/Clophilltoddlergroup/>



Explore Greensand Country



As residents of Greensand Country there is a wealth of beautiful countryside for you to explore. Start your exploration by visiting the recently launched Greensand Country website www.greensandcountry.com, where you will find lots of new local walking, running and cycling routes. A free interactive map will lead you on your way, it will show you lots of points of interest and is easily downloaded to your phone ready for your adventure. Over the next six months we'll be widening your possibilities with more walks, cycle routes and horse riding routes to keep you finding new things to explore by visiting our website.

Walking - The Greensand Country Landscape Partnership has developed new walks to help you explore. The Flit Valley is a rare gem and a self-guided walk follows the River Flit through its quiet valley rich in history and wildlife. This route introduces you to some of the wonder to be found along the Flit, from peat bogs and ancient woodland to the stories told by historic buildings and archaeological finds.

You will soon be able to experience the extended and improved 40-mile-long Greensand Ridge walk with new leaflets and signage. Gateway features designed with the help of the community, will soon appear in Leighton Buzzard and in Gamlingay and mark the new beginning and end of this well-known trail.

Three new routes, the Ouzel Valley Meander, Weneslawe and Katherine Walks, will start from new housing estates, leading people from their new homes to take in the views, soak up the landscape and enjoy the physical health and mental wellbeing benefits associated with exploring the great outdoors.

Cycling - Cycling is popular in Greensand Country, where quiet lanes and ever-changing scenery make for great days out by bike. There are plenty of level stretches for leisurely rides, as well as challenging climbs for seasoned cyclists and a network of off-road routes that remain passable year-round, thanks to the area's sandy soil.

In partnership with Sustrans and Central Bedfordshire Council, seven new circular cycling routes have been created to help you to explore more of Greensand Country by bike. Some of these are for families. The Greensand cycle ride will now extend for more than 40 miles from Leighton Buzzard to Gamlingay and has new signage and downloadable leaflets to help you find your way and learn about the natural and cultural heritage of the landscape.

Horse Riding - Horse riding in Greensand Country is a fun way to explore the landscape and the sandy soil of Greensand Country makes it the perfect place for hacking along greenways and bridleways – many of which are dry and mud-free even in winter.

Getting out and about in Greensand Country has never been easier, with 5 new circular horse riding routes promoted by the British Horse Society and the Greensand Country Landscape Partnership for all abilities which are available from our website.

There are parking places for your horse box and places for you and your horse to stay too. Riders wishing to venture 'off the beaten track' of public bridleways can purchase a Greensand Horse Riding Pass.

Be Inspired - Greensand Country is a great place to get outdoors and discover some fascinating history and amazing views. Plan a great day out that everybody can enjoy, with idyllic villages to explore, home cooked food to eat, adventures to be had, unique handmade crafts to buy and history to discover.

From stately homes to farm shops, and from lakeside views to mountain biking – Greensand Country can offer it all.

New ultra marathon comes to Greensand Country

Runners in Greensand Country area will have the opportunity to take part in the landscape's first 50KM ultra marathon race, which will take place on 13 June 2021.

The 50KM Ultra Trail is being organised by Runaway Racing, a running events company which specialises in ultra marathons.

The inaugural event will be hosted at the Shuttleworth Estate in Old Warden, right in the heart of Greensand Country, the beautiful and much loved landscape defined by the Greensand Ridge, stretching from Leighton Buzzard to Gamlingay.



Chris Bradley, Event Director at Runaway Racing, says: "We've wanted to organise an event in the Greensand Country for years, it's a beautiful place to run and we were surprised to find very few other ultras in the area.

"Our chief route planner, Tim Mills, lives locally and has chalked up thousands of miles over the years, so we're confident it's the best route we can make it. It's relatively flat throughout lending to a fast and runnable course, plus there are only six styles/gates over the full distance."

The 50KM circular route starts out on private trails within Shuttleworth and then heads to Old Warden, Deadman's Cross and Haynes Church End. It then loops past Clophill, Chicksands, Shefford and onto Broom, skirting round Biggleswade before swinging back towards Shuttleworth to find the finish line.

The entire route will be marked out on race day and follows public footpaths, bridleways and tracks throughout. These routes are open to the public (except for within Shuttleworth) and are available to anyone who would like to explore the stunning area.

To find out more about the Ultra Trail please visit <https://www.greensandcountry.com/event/greensand-country-ultra-trail/>. Or if you would like to know more about exploring the trails for yourself then please go to the interactive map at <https://www.greensandcountry.com/explore/interactive-map/>.





**Bedfordshire
Cambridgeshire
Northamptonshire**

Wildlife walks & talks

Wednesday 16th June

Pegsdon Hills and Hoo Bit Nature Reserve

6.45pm for a 7.00pm start (Pegsdon, Hitchin SG5 3JS)

A chalk grassland walk* with Graham Bellamy

Graham will lead a walk over this chalk grassland reserve. A special focus of Graham's conservation work for forty years, this rich and varied terrain will provide a spectacular display of spring wild flowers.

Tracks and paths across the grassland can be steep and uneven.

We very much look forward to seeing you! *£3 per adult.

Open to all. Events have group size limits. Please reserve.

To book places or for additional information please email
flitvale.info@gmail.com or

ring Ann on 075801 78889 between 6 and 8 pm or at weekends.

The Wildlife Trust for Bedfordshire, Cambridgeshire and Northamptonshire

Registered charity number: 1000412

www.wildlifebcn.org

Flit Vale Local Group

www.flitvale.org.uk

St Mary's Church News



On Saturday May 8th the church held a picnic in the churchyard. More than 80 boxes containing a filled roll, a scone with cream and jam and a piece of cake were prepared by the fundraising group. Everyone watched the weather forecast with growing apprehension, and sadly, it wasn't the best of days! However, typically British, we gathered under blankets and, with brollies to hand, sat in small groups to enjoy both the food and the company. Some collected their boxes and took them home, but most braved the elements and a good time was had by all! Augmented by a raffle, the event raised about £750 for church funds. Huge thanks are due to the fundraising team and all who came. We were pleased to welcome old friends from Haynes and new ones from Maulden.

Future events to look forward to include a Celebration Tea to mark the end of lockdown, planned for July 3rd, See Poster on page 13 for details a Scarecrow Festival on September 18th/19th, and a Christmas Market with community Carols in the churchyard on December 18th.

We hope to see you all at one or more of these events to raise much needed funds for St. Mary's and charity.

St Mary's Church, Clophill

Future events

Summer Afternoon Tea: 3rd July

2-5pm

A community celebration of the end of LOCKDOWN

See poster on page 13 for details

Scarecrow Festival: 18th/19th September

Theme: HEROES

A Village event for the enjoyment of all

Christmas Evening in the Churchyard 18th December

4pm

Food, mulled wine, stalls and Carols led by the Clophill Christmas Choir

Please put these dates in your diary and continue to give your support

More details later

St Mary's Church, Clophill

Come and join your friends at our

Summer Afternoon Tea

to celebrate the end of Lockdown restrictions

on Saturday 3rd July 2pm - 5pm

in the lovely surroundings of the Church grounds



Please pre-order

Afternoon Tea box £5 each

Contact Julie Benson 01525 860497 or at

juliebenson@talktalk.net

Each box includes

a selection of finger sandwiches

Homemade scone with jam and cream

A slice of homemade cake

+ limitless cups of tea/coffee and cold drinks

All profits for the upkeep of St Mary's Church

Bring your own chairs or rugs

Raffle



Clophill's Serving Survivors of WW1

By Sue Pearson

Continuing our series in celebration of Clophill's brave men who fought in and survived the First World war...

Arthur Samuel Taylor Maddams



Arthur lived at Brickwall Farm, with his parents John and Maria and his siblings, one of whom, John George is listed on our village memorial. He was born in 1898 and joined the Machine Gun Corps in 1917, as a Private. His enlistment papers show his occupation as Engineer's apprentice, he was just 18.

In 1918 he was punished for overstaying his leave in Clophill by 14 hours. He was demobbed in 1919. He returned to live at Brickwall Farm but travelled extensively between the two wars and lived for some time in Singapore.

Arthur married Joan Wallace in 1934 in Dorset. Arthur also served in WW2 and

was a 2nd Lieutenant, sadly it is believed that he was a prisoner of war in Singapore for many years. In June 1947 he gained a Private Pilot's licence (see 1947 photo) in an Auster at Cowes Aero Club, his address at that time was c/o Wilmington Lodge, Ampthill. His occupation is given as a Planter, which was his occupation when he lived in Singapore. He died in East Sussex in 1992.

Rev. Cecil Lloyd Matthews lived in the Rectory and was a Senior Chaplain to the Forces. He was awarded the Star. He was born in 1881, educated at Oxford and eventually became Archdeacon of Leicester. He married Ennis Beddoe. He was offered the living of Clophill by Lord Lucas of Wrest Park in 1911 and in 1915 became a Chaplain to the Forces. By 1916 he was serving in France and was present at the first advancement on the Somme, but soon he was hospitalised with throat trouble. His activities were regularly reported on in Ampthill News and letters home from parish soldiers frequently mentioned him. Similarly, he wrote to the families of the parish about Clophill men he had encountered. In 1917, whilst still in France, he was promoted from Captain to Major, supervising 16 chaplains and 70,000 men. It was reported in Ampthill News that he had been "hit by Huns" on 5 occasions. In 1918 although still suffering with throat problems he declined a post in Herefordshire stating he preferred to return to Clophill after his war work of looking after 16 hospitals was finished. However, in 1919 he wrote to the parish stating that he was accepting an appointment in Leicestershire providing 2 reasons for the decision, firstly there had been some difficulty in the village and he would not feel 100% welcome and financial reasons- citing the cheaper cost of living in Leicestershire as a factor. He died in 1962.

Clophill's Serving Survivors of WW1

Continued

Harold Matthews – lived in 15 Back Street. He was a hat blocker in 1911 when he lived with his sister and parents, Levi and Charlotte (nee Gudgin). He was one of their 10 children, 8 of whom had survived. He served with the Bedfordshire Yeomanry who were absorbed into the 5th (Royal Irish) Lancers in 1917, when, along with the rest of 3rd Cavalry Brigade the 5th Lancers fought in such actions as Gillemont Farm and Bournon Wood. Towards the end of 1917 they fought at Cambrai.

In 1918 when the Germans launched their Spring Offensive the 5th Lancers were heavily involved in the defence of the British line at the Crozat Canal and at the Canal du Nord where they suffered their heaviest casualties of the war in face of the massive German onslaught. On 11th November 1918 the regiment, along with the Canadian 3rd Division entered Mons and earned for itself the honour of being the first British regiment to enter the town from which they had been the last regiment to leave in August 1914. He married Dorothy Everitt in 1916 and by 1939 they were living in 16 Back Street with their 2 daughters who worked as milliners. At this time Harold was a Market Gardener's labourer. He died in Poole in 1971.

What's on in and around Clophill

JUNE



Sunday 13th

Greensand Country Ultra Marathon. See poster in this issue.

JULY



Saturday 3rd

Summer Afternoon Tea, St Mary's Church, 2-5pm. See poster in this issue.

SEP



Saturday and Sunday 18/19th

Scarecrow Festival, St Mary's Church.

On throughout the month...

Tuesdays... in term time

• Clophill Preschool, Stay and Play sessions on Tuesdays 9:30-10:30am and Thursdays 1-2pm, at the Village Hall. See 'Village Groups' for contact details.

Fridays...

• Clophill Toddler Group, 10am-11.30am, Village Hall. See 'Village Groups' for contact details.

Regular services at Clophill Methodist Church

Weekly Worship at the Church has returned, at 10:30am.

CHURCH SERVICES

Regular services at St Mary's Church, Clophill

1st Sunday 10.45am, Family Praise

2nd & 4th Sundays 10.45am, Parish Communion

3rd Sunday 10.45am, Morning Praise

Sunday morning services are now resumed at St Mary's Church and everyone is welcome to attend.

Please contact our churchwarden Steve Grylls on 01525 860076/07733 321 390 or by email stevegrylls24@gmail.com to let him know you will be coming along and we can make sure that enough socially distanced seating is available.

If you have any diary dates that you would like included on this page, please email clophillspotlight1@hotmail.co.uk

Clophill Heritage Trust

It may have been a damper start to the summer than we are used to, but the rain has certainly helped the site around The Eco Lodges to look greener than ever! We are also seeing plenty of insect, bird and animal life – we recommend stopping at the church on a walk and just enjoying the surroundings.

For June we are thrilled to be able to open The Hive Studio again for private bookings – it is ideal for small meetings, yoga/ pilates/ fitness sessions, meditation or community group meetings. The Studio has its own kitchenette and separate toilet and we can supply refreshments including homemade cake. If you would like to pop up and view the space, please give us a call on 07935 911207.

Don't forget if you are looking for more to do while out on walks with children, we have a range of walks and eye-spy sheets on our website: <https://www.clophillecolodges.co.uk/walk-cycle-routes>.

If you have family visiting over the summer and not enough space at home, we still have a few weekdays available in our beautifully redecorated accommodation lodges, call or email us for details 07935 911207 or Info@ClophillEcoLodges.co.uk.



Village groups

Beverley Court	860920
Brownies	https://enquiryym.girlguiding.org.uk
Clophill Community Care	Duty Contact 07791 773705
Clophill Heritage Trust	Ali Bradbury 07894 710001
Clophill Preschool	Imogen 07765 887868
	Chris 07936 006381
Clophill St Mary's C of E Lower School & Nursery	Emma Topliff 860206
Clophill Toddler Group	Charlotte Messer 07538 150058
Clophill United Charities	Richard Pearson 861110
Conservation Group	Brian Adams 862297
Flower Club	Gillian Hill 860539
Friends of the Cheshire Home	Sue Pearson 861110
Funzone After School Club	07903 167493
Indoor Carpet Bowls	Tony Meredith 860754
Messy Church	Victoria Higgins 07920 568861
	victoriajhiggins@hotmail.co.uk
Friends of St Mary's (FOSM)	Mary Milne and Jenny Garnham
	fosmclophill@gmail.com
Scouts and Cubs	Anita Errick www.scouts.org.uk/get-involved
Tea and Chat	Marilyn Browning 860695
Village Hall Booking Secretary	07821 643936

Useful numbers

Gas (Emergency)		0800 111999
Electricity (Emergency)		0800 7838838
Emergency Fire/Police/Ambulance		999
Water/Sewage (Anglian Water)		0845 7145145
Telephone	(Customer Services) 150 (Faults)	151
Highways Department (Central Bedfordshire Council)		0300 3008049
Benefits Agency (Bedford office)		01234 361500
Registrar's Office (Births/deaths/marriages)		0300 3008089
Rail (Enquiries)		0845 7484950
Buses 01234 262151	(Link A Ride) 01525 840511 (Flittabus)	01582 406561
Luton Airport		01582 405100
Swimming	(Flitwick) 01525 717744 (Robinson Pool)	01234 212479

LOCAL GOVERNMENT

Central Beds Offices (Chicksands)		0300 300 8000
Mid-Beds MP	Nadine Dorries	01462 811992
Central Bedfordshire Councillors	Michael Blair	01525 404513
	Paul Duckett	07988 184061
Clophill Parish Council	(Clerk) James Stirling clerk@clophill-pc.gov.uk	01462 887226

HOSPITALS

Bedford (North & South)	01234 355122	Admissions	01234 261150
		Appointments	01234 359012
Luton & Dunstable			0845 1270127

DOCTOR'S CLINICS

Amphill	(Houghton Close) 01525 300898	(Oliver Street)	01525 631395
		(Greensands)	01525 631390
Shefford	Enquiries 01462 818620	Appointments	01462 810034
Barton 01582 528700		Flitwick	01525 715300

POLICE

County Police HQ	Non Emergency	101
Amphill Station		01234 841212
		101

CHURCHES

St Mary's Parish Church	RECTORS POST VACANT		
	(Church Warden) Mrs Rosemary Ilett	mandrilett@gmail.com	01525 860274
	Mr Steve Grylls	stevegrylls24@gmail.com	01525 860076
St Francis RC Church, Shefford			01462 813436
Clophill Methodist Church	Jim Davies		01525 860829
Baptist Churches	(Maulden) Ian Crawford		01525 634325
	(Shefford) Hazel Arnold		01462 812564

SCHOOLS

Clophill St Mary's C of E Lower School & Nursery	(Headteacher Mrs K Bingley)	01525 860206
Harlington Upper School , Harlington		01525 755100
Preschool	clophillpreschool@gmail.com (Chris) 07936 006381 or (Imogen)	07765 887868
Redborne Upper School , Amphill		01525 404462
Robert Bloomfield Middle School , Shefford		01462 628800

Painter and Decorator Call Chris : 07950714579



*do you want your
home brightening up?*

all interior & exterior work

no job too small!

free no obligation quote

*25 years experience
& fully insured*

*facebook: @christopherthepainter
email: chris.minihane@btinternet.com*

JK Garden and Landscape Services Ltd



We offer...

full landscaping service

patios

fencing

decking

new lawns

driveways

all garden maintenance

Contact us on **0791 2028254**
or at **jkgardening@hotmail.co.uk**

You can also find us on Facebook

TALKEASY Coaching

***Do you want to make a fundamental
difference to your life and don't
know where to start?***

My name is Lynn and I am a Life Coach.

I have extensive experience helping
with every aspect of life, e.g. support with
family issues, or your own financial,
emotional, or physical wellbeing.

My most recent project has been supporting
young teenagers in their place of education.

Be the change in your life
and contact me for a free,
no obligation chat.



07557948644

01525860384

lynncllements87@gmail.com

Tammys' Talons

Nail Technician

Gel. Manicure and Pedicure

IZABEL HAMMON
REGISTERED NAIL TECHNICIAN
CALGEL iz new *Cherry Blossom*

Tammy Kirby

Clophill, Bedfordshire, MK45 4AW

Tel : 07968379309

tammystalons@gmail.com

**Do You have a
local business that
you would like to
advertise in our
local Spotlight**

**Contact
Advertising Manager**

Emma Frost

ads@clophillspotlight.co.uk

**USING PARABEN & SULPHATE FREE, 100% VEGAN,
CRUELTY FREE PRODUCTS**



**A Cut Above Hairdressing
by Rachel**

**In the comfort of your own home
cutting & styling specialist**

call or text : 07896009382
facebook: acutaboverachel

Salon experienced
Fully insured
Fully qualified to Level 3 Standard.

E.T. Accountancy Services

Experienced Chartered Accountant and
Chartered Tax adviser based in Clophill
providing a full range of accountancy
and taxation services to businesses
and private individuals.

To arrange a free initial consultation
please telephone me on 01525 590465
or email emma@et-accountancy.co.uk

*Chartered Accountant and
Chartered Tax Adviser*

Emma Thoullass FCA CTA
www.et-accountancy.co.uk
01525 590465



**Professional friendly
accountancy services**

Fully qualified,
Free initial consultation,
competitive fees
Sole traders, Ltd companies,
bookkeeping, payroll,
CIS, VAT & Tax.

**sally@sjtax.co.uk
01234 831997
07899 808592**

Partridge Flooring

Your Local Flooring Service - 45 Years Experience



For free estimate and advice

☎ 01525 860884

☎ 07967 611883

✉ partridgeflooringservices@gmail.com

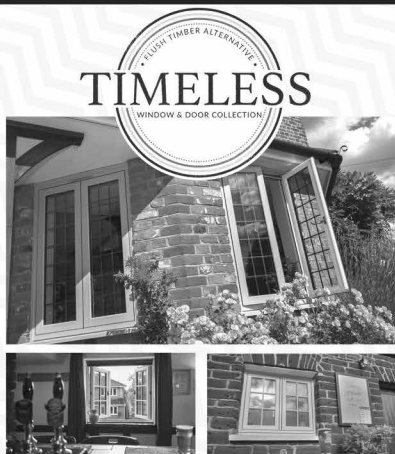
Supply & Installation

- Carpet
- Karndean
- Amtico
- Wood
- Laminate
- Vinyl
- Screeding
- Plywood

 **amtico**

 **Karndean**
Designflooring

Kings Windows

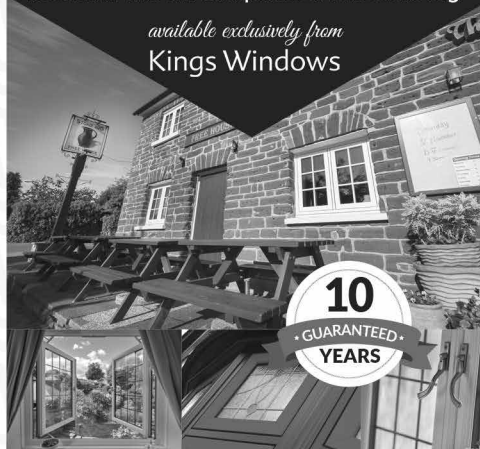


Available in a range of traditional colours
Choose classic joints to look like wood
Stunning handle options

TIMELESS FLUSH TIMBER ALTERNATIVE WINDOWS

as seen in *The Old Compasses* & *The Stone Jug*

available exclusively from
Kings Windows



01582 882 800

www.kingswindows.co.uk

Take out an annual ad

in **CLOPHILL
SPOTLIGHT**

Black & White per year

One-sixth	£58	H31 x W126mm
One-quarter	£75	H92 x W61mm
One-third	£88	H61 x W126mm
Half page	£123	H92 x W126mm

Please email our Advertising Manager Emma Frost

ads@clophillspotlight.co.uk

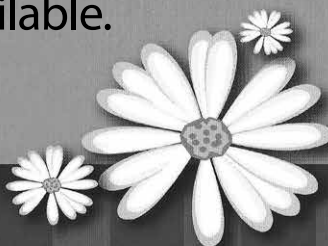
Daisy Cooper

Spring cleans, one off cleans and moving home cleans all available.

Daisycooper22@hotmail.co.uk

Please call 07913 332914

Keeping your home as fresh as a Daisy



Hypnotherapy...*the Mindful Way*

For help with: anxiety, stress, IBS, migraine mindful eating, insomnia & many other conditions. For more information or an initial consultation please contact Ann. Tel: 07791171980

Email: enquiries@pathwaysofmindfulness.co.uk
www.pathwaysofmindfulness.com



ADAM IN YOUR GARDEN

**TREE SURGERY, HEDGE TRIMMING,
TURFING, FENCE MAINTENANCE,
DECKING, PATIO CLEANING**



Qualified, Fully Insured, Competitive Rates
Free Estimates

TEL: 01582 518954 MOB: 07828 490360

Web Site: www.adaminyourgarden.co.uk



ACCOUNTING SERVICES

Providing a **Much Better** service for **Mid Beds** since 2000

If you are **Self-employed** or a **Small Business** and require assistance with

Accounts, HMRC tax returns, VAT

we offer a total confidential service at competitive rates

Contact T: 01525 861087 M: 07714189994 E: mbaccounts@btinternet.com

Telephone

**01525
860526**

The Stone Jug

A Free House

BACK STREET, CLOPHILL

A Proper Pub for Proper People

A family run village 'boozier' serving up great value, quality lunches that will fill you up without emptying your wallet! A pub is for 12 months of the year, 365 days and we're here for you on each and every one of them!

- 5 real ales, including 3 guest pumps that change frequently (see our Facebook page for details)
- selection of wines and Prosecco by the glass – or even better, by the bottle
- home-cooked lunches Tues-Sat, 12pm-2.30pm



REMEMBER OUR MOTTO

"A VISIT TO THE JUG IS BETTER THAN GOING TO A PUB"

CHEERS JOYCE, VIKKI & MARK

www.stonejug.co.uk

www.facebook.com/thestonejugclophill

OVENCLEAN®

The original oven cleaning specialists

All types cleaned:



- Ovens
- Grills
- Ranges
- Hobs
- AGAs
- Microwaves
- BBQs
- Extractors

Fully insured, and DBS Police Checked

For a quote call Clive direct on: 07949 233089 or phone the Office on 0800 840 7127



www.ovenclean.com



Ovenclean Clive Burgess



Warm Property

Heating & Plumbing Specialists

We are Malden based, fully insured, British Gas trained and with more than 15 years' experience. We offer Free No Obligation Quotes & Advice.



0%
INTEREST
FREE
CREDIT

12
YEAR
Guarantee

- Boiler And Heating Installations
- Fires, Warm Air Units & Ovens
- Landlord Certificates
- Servicing And Repairs



WORCESTER
BOSCH
Accredited Installer



07716 478794
01525 839342



www.warmprops.co.uk



Tel: 01525 861416
www.thebluecat.net

Find us on Facebook @thebluecatcattery or email us at enquiries@thebluecat.net

The Bluecat is a luxury cattery set in the quiet area of Jacques Lane in Clapham. With just 14 cat chalets, we have time to fuss, pamper and play with your cat to its heart's content whilst in our care. Please call for further information.

Misty Double Glazing?

Over 30
Years
experience.
FREE
Quotes

Over 30
Years
experience.
FREE
Quotes

**KEEP YOUR WINDOW FRAMES...
... WE JUST REPLACE THE GLASS!**

• UPVC • Aluminium • Or Wood

Because we replace just the glass the repair is a Fraction of the cost of a complete replacement window.

BEFORE



AFTER



mistydoublinglazing.co.uk
QUALITY GLAZING SERVICES

01525 876808

WE ALSO REPLACE BROKEN...

• Glass • Handles • Hinges & Locks
AND REPAIR...Patio Doors & Conservatories!

THE SECRET OF GREAT HAIR

The secret of great hair is a great haircut. *By Kevin Reynolds*

Have your hair done in the comfort of your own home.

Free consultations available.

Kevin ran his own salon in the West End of London until he moved to Bedfordshire 15 years ago. Whether you're looking for a re-style, a new colour, original hair ideas, something cutting -edge or something familiar, you'll be safe in Kevin's hands.

Call us now for an appointment

07970 467805

kevinreynolds

Hair Stylist

reynoldskevin59@gmail.com



NICOLA RAYNER FITNESS ONLINE

Pilates, HIIT, Core Strength,

Legs, bums & tums, Zumba, Mobility

Over 150 online workouts plus live classes

to join - fitone@live.co.uk 07801 510988



**Want to do
more for the
environment?**

You order, we deliver

Do you want to buy food free from single-use plastics? We provide all your store cupboard essentials, packaged in recyclable and compostable materials.

Sourced within a 25 mile radius by ethical and like-minded people and delivered direct to your door.

Areas covered: Ampthill, Maulden, Flitwick, Clophill, Silsoe, Woburn, Woburn Sands, Aspley Guise and surrounding villages.

Visit our website: www.rephils.co.uk
Or ring Phil: 07562 272572 to place an order.

Free delivery for all orders over £10.00.

Welcome to Clophill St Mary's C of E Lower School and Nursery

A small, friendly, Voluntary Aided Church of England Lower School, graded 'Outstanding' by Ofsted, with close links to the local community.

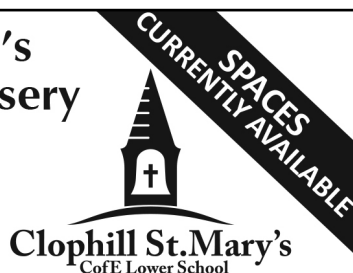
St. Mary's is a Values based school taking children aged from 2 years 7 months to 9 years and providing them with a framework for living, tightly woven into the positive Christian ethos of the school.

Breakfast and after school care for all ages.

Acorn Nursery

for preschool children aged 2 years 7 months to 4 years with breakfast and after school care available.

Providing 30 hours free childcare entitlement.



**NEW NURSERY BUILDING
OPEN NOW**

To arrange a visit, please call us 01525 860206
or email: generaladmin@nursery@clophillstmarysschool.co.uk
For more information visit: www.clophillstmarysschool.co.uk

PROUD TO BE AWARDED
AS ONE OF THE UK & IRELAND'S

ttg
TOP
50
TRAVEL AGENCIES 2021

SelectTravelHolidays

Home of Cruise Select

24 Mill Street, Bedford

Discover a new British Cruise Line for a new Cruising era

PROUD TO BE AWARDED
AS ONE OF THE UK & IRELAND'S

ttg
TOP
50
TRAVEL AGENCIES 2021

British Isles

Norwegian Fjords

Arctic, Greenland & Iceland

Baltics & St Petersburg

Canaries

Cuba & the Caribbean

Cape Verde

Scandinavia

Launching Spring 2022, Ambassador Cruise Line's new ship Ambience will offer a carefully curated no-fly cruise programme from Tilbury, visiting 88 different ports on 33 sailings, and will focus on delivering premium-value & classic cruising.

Rachel

Bella

Sharon

Amy

*On sale from June 2021 -
Be the first to find out more by
contacting our cruise specialists*

Freephone 0800 028 0529
01234 326778

www.selecttravelholidays.co.uk
sales@selecttravelholidays.co.uk

BOOK WITH CONFIDENCE
ABTA & ATOL protected

ARCHITECTURAL DRAWINGS AND BUILDING DESIGN SERVICES

Professional Architectural design services provided for all types of private residential building projects including extensions, loft/garage conversions, garages and outbuildings through to new build dwellings with all necessary council approvals obtained.

For free estimates and advice contact Steve Coates on Flitwick 01525 862457 or 07960 215053.
stevecoates72@gmail.com

S & S Coates Surveying & Design, Unit 4 The Courtyard,
r/o 13 High St, Clophill, MK45 4AB.

LIKE US ON #2

CBuild
chartered building engineer

LABC
The Building Authority

A L & G ABBOTT

F u n e r a l D i r e c t o r s

~ Established 1832 ~

WITH YOU WHEN IT MATTERS MOST

An independent family business continuing to provide a caring & professional service to Bedford, Kempston & the surrounding villages.



- 24 Hour Personal Service
- Pre-Paid Funeral Plans
- Private Chapels of Rest
- Green Burials
- Home Arrangements
- Civil Services Available
- Bereavement Listening Service (Free to our families)



T 01234 843222

www.abbott-funerals.co.uk support@abbott-funerals.co.uk

150 BEDFORD ROAD, KEMPSTON, BEDFORDSHIRE, MK42 8BH

AIMS

Tim Kemp BA FCA
Top Barn Rectory Road
Steppingly MK45 5AT

TEL/FAX : 01525 717141
MOBILE : 07900 823 012
www.aims.co.uk
e-mail: timk@aims.co.uk

- ♦ **Professional** service providing for all your accounting and tax needs
- ♦ **Practical** advice based on 20 years experience in **running** businesses
- ♦ **Personal** approach with fixed fees relevant to the work **you** need
- ♦ **Friendly, local** accountant supporting the community for over 20 years

Please call for a free, no-obligation initial meeting

ACCOUNTANTS FOR *business*

Hills-Howson Financial Services

Financial adviser appointments available in your home or our office

The Old Post Office
53 High Street
Clophill
Beds MK45 4BE

Tel: 01525 861803
www.hills-howson.co.uk
hills.howson@btconnect.com

Including:-

Investments

Pensions

Protection

Annuities

Auction Sales & Valuations

Valuation, collection and auction service
of individual items through to complete
property and commercial clearances.

Call for a free no obligation quote or
email **info@peacockauction.co.uk**

SALE ENTRIES NOW INVITED

Antique & Modern Furniture • Clocks • Books • Ceramics & Glassware • Pictures & Prints • Bicycles
Jewellery & Watches • Collectables • Garage Tools & Equipment • Household Electrical Items • Office
Furniture & Equipment • Retail Products & Stock • Vehicles • Horticultural & Commercial Equipment
Building Materials • Garden Furniture & Effects

www.peacockauction.co.uk



W&H PEACOCK
AUCTIONEERS & VALUERS
01234 266366



Eastcotts Park,
Wallis Way,
Bedford,
MK42 0PE

THE COMPUTER MAN



Got a problem with your computer and don't know what
to do? Suffering with a virus or spam?

Don't hesitate! Ring your local computer expert

**Remote repairs or home visits
(Day, evening & weekend)**

**Lap top/desk top loan
(Free pick up & drop off in local area)**

Comprehensive health check from £35 (**Special Offer £35** - normally £40)
Refurbished fl at screen available from £15 • Refurbished base units available from £99



Contact Stephen Amos
07976 718567
the.computerman@ntlworld.com





rincontuition - Spanish & Maths

Expand your knowledge. Boost your confidence

Phone 01525 860743 - Mob 07952 667814

Exam techniques and preparation. Revision and practice papers: SATs, 11+ and GCSEs

Spanish for business or pleasure, all levels. GCSE & A-levels

Skills development: conversation, reading and writing

Maths: Boost your confidence and abilities

KS1, KS2, KS3, SATs, 11+ and GCSE practice papers.

References available. Reasonable rates

Enquiries: 01525 860743 - 07952 667814

rincontuition@yahoo.com



LIZZIE BROWN PET CARE & HORSE GROOM SERVICES



**DOG WALKING
PET POP-IN & FEEDING
PET/HOUSE SITTING
EQUINE GROOM***

(*BTEC Cert Equine Management)



Lizzie Brown 01525 862459 / 07500 989 700

Reliable friendly local service

Short notice available (no contract commitments)

Insured Quality references available CRB checked*

*(Disclosure & Barring Service)



Hairs & Graces

Unisex Salon



Wet Cut £19
Cut & Blow Dry £30
Colours start from £27
Special OAP rates

Opening Hours:

Monday	9.30-2.00
Tuesday	9.30-5.00
Wednesday	9.30-5.00
Thursday	9.30-8.00
Friday	9.30-8.00
Saturday	9.30-4.00

Zoe, Donna, Gemma
and Amanda look forward
to welcoming you.

Ring now to book an
appointment.
Appointments also
available with our Barber.

Burgoine Business Centre, 117 Clophill Road, Maulden MK45 2AE

01525 861491 • Loads of free parking



GARDEN DOCTOR

Rob McLeod

Pruning Specialist

Professional, Local, Experienced

- * All tree and hedge work undertaken
- * High standard of work
- * Waste material recycled for compost
- * Free Quotations
- * Local, reliable service you can trust

Tel: 07763 239340 or 01525 861568

email: rob@gardendoctor.org.uk

www.gardendoctor.org.uk

Call the Garden Doctor and bring Good Health to your Garden



Hedging & Pruning
Shrubs & Fruit Trees
Tree Surgery & Removal
Fully certificated and insured



We'll get you up and running!

We offer the very best physiotherapy care from a friendly approachable team of nine highly trained Chartered Physiotherapists all members of the Health Professionals Council

Expert treatment including:

Neck/Back/Hand and Tennis Elbow Pain
Headaches/Migraine/Sciatica
Incontinence/Pelvic/SIJ/SPD/Pregnancy Back Pain
Sprains/Strains/Torn Ligaments
Whiplash/RSI/Osteoporosis/Sports Injuries

Specialist Physiotherapists:

Neurological, Paediatric, Vertigo and Dizziness

We also offer complementary treatments:

Acupuncture, Reflexology, Massage, Indian Head Massage,
Chinese Herbalist, Lymphatic Drainage and Pumps



Tel: 01525 720882 www.chartered-physiotherapy.co.uk Email: amphillphysio@btconnect.com

7 Station Square, Flitwick, MK45 1DP



The Happy Place.co.uk

On the Green beside the Post Office every Friday, 3.30-7.30pm

We are your local mobile fish and chip van, we have been parked on the green every Friday for the past 6 years. We serve only the highest quality produce, cooked fresh to order and served to you by our friendly staff.

Why don't you pop down and come and Try Our Fry!

To avoid waiting in the cold, give us a call to

place your order on: 07833 786108

A big thank you to all our customers who have loyally supported us over the past couple of years.

Chapman & Kirby Heating

Gas, Plumbing & Heating Installations

Gas Safe Registered

Boiler Servicing & Maintenance



Call us now

Tel: 01525 861255 Mob: 07831 132308

Email: info@chapmanandkirbyheating.co.uk

1C, Old Silsoe Road, Clophill, Beds., MK45 4AR



NEVILLE FUNERALS

We take care of the details, so you can say
goodbye the way you want to.

NEVILLE. Because there is a difference.

AMPTHILL

The Old Church, Flitwick Road MK45 2NT

t: 01525 406132

e: ampthill@nevillefuneralservice.com

SHEFFORD

24 Clifton Road SG17 5AE

t: 01462 813258

e: shefford@nevillefuneralservice.com

www.nevillefuneralservice.com



ARE YOU A LAWN LOVER?

From as little as

£15*

per treatment

* Based on a lawn size
up to 40m²

HELP YOUR LAWN TO THRIVE, NOT JUST SURVIVE

Over the last 30 years our love for lawns has grown and grown (just like our grass!). We combine our passion and enthusiasm with innovative technology as we continue to revolutionise UK Lawn Care. Our groundbreaking 12-month **Lawn Treatment Programmes**, keep your grass looking its best all year round, ensuring your lawn receives the love and attention it deserves.

Let's create the lawn we both love

Start your Lawn Care journey today:

Call us on 01234 709345/01480 597432

email: bedford@greenthumb.co.uk visit: greenthumb.co.uk/bedford

GreenThumb
LAWN TREATMENT SERVICE 

Baths, Toilets &
Showers
Sinks and Taps
Guttering
Leaks and Burst Pipes
Drainage
Handyman jobs also



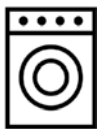
beta plumbing

Silsoe based
No call out fee – free estimates
Fully insured and guaranteed
No job too small
07720 723653 01525 864859
info@betaplumbing.co.uk
www.betaplumbing.co.uk

TIM DOWNING

Washing Machines Dishwashers Dryers Electric Ovens

Repairs Servicing Sales



Tel: Tim on Clophill 860148

Mobile: 07969 545 276



A local family business offering a quality service at a competitive price

A member of the White Goods Trade Association

Fully Insured Est. 1981

Paintaway

Interior & Exterior Work Undertaken

No job too small

Professional service



Free estimates

07851 176296

mjswain1@hotmail.com



Did you know there are free on-line training courses available at Future learn. www.futurelearn.com The training is free - you can stop go and pick up at a time convenient to the learner, modules are bite-size and there is a lot of choice.

LOCAL ALLOY WHEEL REFURBISHMENT



Tel:
01525
860069

Alloy Wheel Repairs

Diamond Cut Alloy Wheels Repaired On Site

Powder Coat Primers & Lacquers

Fast Turnaround Alloy Wheel Welding

Tyres At Competitive Prices

NEW for 2015 - 4 Wheel Alignment Service

www.mintalloys.co.uk

Root 'n Branch

Your Local Friendly & Reliable Gardener

All aspects of Garden Maintenance undertaken
• PRUNING • MOWING • WEEDING • PLANTING • HEDGING

Southfields, Shefford
email: whooley@hotmail.co.uk

Tel: 07771 537385

Public Liability
Insured



THE CONIFERS
CANINE HOTEL

LUXURY
ACCOMMODATION
HOLISTIC FOOD SHOP

01525 860339

www.the-conifers.co.uk



STUART DREW ELECTRICAL SERVICES

PART P CERTIFIED
MEMBER OF THE ECA
QUALIFIED TO 18TH EDITION

Consumer unit upgrades (fuse box). EV charging points. Additional lights and sockets.
Garden power. Electric showers fitted. Fault finding and electrical safety certification.

For a professional, courteous service with free estimates & all work guaranteed

29 Lincoln Way
Harlington
Beds
LU5 6NG

Fully qualified & insured
Over 30 years experience

Telephone
01525 875965
07941 812662



Compu-Doc

PC / laptop crisis ?

01525-402227

Call the Doc for -

Hardware & software

Diagnosis & treatment

john.stafford@compu-doc.co.uk

BURGLAR ALARMS

New Alarms Fitted or Upgrade Existing Alarms

BURGLAR ALARMS

We fit New Alarms - Wired or Wireless Systems
We can service and maintain your existing alarm

CCTV

We fit high quality systems to maximise your security.
Access your CCTV via the internet or mobile.

DOOR ENTRY

We fit a range of quality video and audio intercoms
to suit your needs.

*We are a family run business with over 35 years
experience in home security and crime prevention.*



www.maximumsecuritysystems.co.uk

Contact:

01582 864138 / 07746 111520

For a free quote and consultation

DAVID JAMES

WWW.DAVIDJAMESKITCHENS.CO.UK



SAVE £££
BUY DIRECT

Call 01525 722230

NEW

KITCHEN & LIGHTING
SHOWROOM

5 MINUTES
FROM CLOPHILL

DESIGN
MANUFACTURE
INSTALL

Pulloxhill
Business Park
Greenfield Rd
Bedford
MK45 5EU



01234 348179

7 The Arcade, Bedford MK40 1NS
www.pumpnickel-online.co.uk

pumpnickel HEALTH

**one stop shop for all your
health and fitness needs!**

We probably stock the largest selection of:

Organic Nuts & Seeds, Dried Fruit, Honey & Herbal Teas

Vitamins & Supplements & Herbal Remedies

Sports nutritional Products

Healthy Snacks

Aloe Vera Products

Gluten free/Diary Free/Sugar Free food

**Aromatherapy oils & Eco Friendly Cosmetics
& Toiletries and much more...**

At very Competitive prices

Many of Popular Products are 50% off Retail Price



BioCare



viridian

... and many more

20 YEARS EXPERIENCE
established over 30 years ago, we have
HIGHLY QUALIFIED STAFF who can
give you **HELP AND ADVICE** on all
matters of complementary health

**HIGH QUALITY PRODUCTS,
SOUND ADVICE AT A GREAT PRICE**



**Mail Order now
available please
contact us:**



*Bathroom
Vogue*

EST.
1989

- Suppliers of traditional and modern equipment
- Working whirlpool & spa baths, power & steam shower systems on display
- Over 40 settings on display
- Complete installation service if required
- Personal friendly service from a family run business
- Wall and floor tiles
- Accessories
- Mirrors
- Bathroom furniture
- Heated towel rails
- Saunas
- Bathroom cabinets

SHEFFORD 01462 627002

www.bathroomvogue.com

Unit 4A, Shefford Industrial Park, St Francis Way, Shefford SG17 5DZ

Hire Clophill Village Hall



Wedding Receptions
Birthdays & Special Occasions
Dances and Discos
Club & Community Meetings & Activities

Phone: 07821 643 936

Mail: Clophill.villagehall@gmail.com Web: www.clophillvillagehall.co.uk

ROGER STOREY

YOUR LOCAL PAINTER AND DECORATOR

Friendly and Reliable Service

Many Years Experience

Please phone: **01525 861253** or **07800 777615**

ANDREW BAKER WINDOWS

9 SHEFFORD ROAD
CLOPHILL BEDS
MK45 4BT

SPECIALISING IN UPVC WINDOWS,
DOORS , CONSERVATORIES,
FASCIA , SOFFITS , GUTTERS AND
CLADDING. ALSO AVAILABLE FOR CARPENTRY
WORK. NO JOB TOO SMALL OR LARGE.

20 Years experience.
Free local quotes.

FENSA

Fensa Registered
FIVE YEAR GUARANTEE

Contact Andrew: 01525862804 / 07825017855

Email: abakerwindows@gmail.com

Advertisers index

Architectural Services			Food and Refreshments			Pet & Animal Services		
S&S Coates Surveying & Design	26		Re-Phil's Zero Waste Shop	25		Conifer Kennels & Cattery	36	
Auctioneers & Valuers			The Happy Plaice	32		Lizzie Brown Pet Care	30	
W&H Peacock	29		Funeral Services			The Bluecat Luxury Cattery	23	
Bathroom Services			AL&G Abbott, Funeral Directors	27		Plumbing & Drainage Services		
Bathroom Vogue	38		Neville Funeral Service	33		Beta Plumbing	34	
Builders & Carpenters			Garden Services			Chapman & Kirby Heating	32	
Stuart Benson Building Projects	IFC		Adam in your Garden	22		Warm Property Services	23	
Car Services/Repairs			Garden Doctor	31		Print Services		
A&F Motors Ltd	IFC		Green Thumb Lawn Treatment	34		Fidelity Design & Print	IFC	
Mint Alloys	35		JK Garden and Landscape Services	18		Public Houses		
TC Coomber Car Services	BC		Root 'n Branch	36		The Stone Jug	22	
Chimney Sweep			Health & Beauty			Repair Services		
Poppins Chimney Sweep	IBC		A Cut Above Hairdressing	19		Tim Downing Repair Services	34	
Cleaning Services			Ampthill & Flitwick Physiotherapy	32		Security Services		
Daisy Cooper	21		Hairs & Graces	31		Maximum Security Systems	37	
Ovenclean	23		Kevin Reynolds	24		Travel Services		
Computer Services			Mindfulness Movement & Meditation	40		Select Travel Holidays	26	
Compu-Doc	36		Nicola Rayner Fitness	24		Tuition and Coaching Services		
The Computer Man	29		Pathways of Mindfulness	21		Rincon Tuition (Spanish & Maths)	30	
Electrical Services			Tammys' Talons	18		TalkEasy Coaching	18	
Stuart Drew Electrical Services	36		Pumpnickel Health	38		Village Hall		
Financial Services			Home Improvements			Clophill Village Hall	39	
AIMS Accountants	28		Christopher The Painter	18		Windows/Replacement		
ET Accountancy Services	19		Partridge Flooring	20		Andrew Baker Windows	39	
Hills-Howson Financial Services	28		Roger Storey - Painter & Decorator	39		AW Windows	IBC	
MB Accounting Services	22		David James Kitchens	37		Kings Windows	20	
SJ Tax & Accounting Services	19		Paintaway	35		Misty Double Glazing	23	
			Nursery Schools					
			Clophill PreSchool	BC				
			Clophill St Mary's C of E					
			Acorn Lower School and Nursery	25				

IFC = Inside Front Cover IBC = Inside Back Cover BC = Back Cover



Mindfulness Movement & Meditation

...a class for all

Based on gentle yoga and incorporating the principles of mindfulness, this class teaches how to use the breath to stretch, move and relax. Held via Zoom so you can participate from the comfort of your own home:

Sunday at 10.00-11.00 am or Tuesday evenings 7-8pm £6/hour session

For more information or to book a place please contact **Ann: 07791171980**

ann.okeeffe@btinternet.com

Love reading Spotlight?

Don't forget to mention us when you use a business that advertises in this magazine!



Poppins Chimneys

**Chimneys Swept
Wood and Multifuel Stove
Installation & Liners**

Great Service - Great Price!



01525 860424 or 07858 688785
mark@poppinschimneys.co.uk

**NO PRESSURE SALES – YOU DEAL WITH
THE OWNER FROM START TO FINISH**



- ✓ A-rated windows as standard
- ✓ Composite doors
- ✓ High security
- ✓ Bifolding doors
- ✓ Conservatories
- ✓ Fascias, soffits and guttering
- ✓ Insurance-backed guarantee
- ✓ Fensa certificate



Contact: ANDY WOOD

01582 536944 or 07796 272539
sales@awwindows.co.uk



See reviews from satisfied customers at awwindows.co.uk

Clophill Preschool

**Your local Outstanding Preschool,
based at Clophill Village Hall -
welcoming children from
2 years of age.**

We'll help your child to become an inventive
and creative learner. With access to a fantastic
outdoor area, our focus is on natural and
exploratory 'play with a purpose'.



**Call us today to find
out more:
07765 887868 or
07936 006381**

www.clophillpreschool.co.uk







- MOT'S CLASS 4/5L/7**
- CAR SERVICING & REPAIR**
- TYRES & EXHAUSTS**
- AIR CONDITIONING**
- DIAGNOSTIC CODE READING**

**Collection
& Delivery**
SERVICE AVAILABLE
Please ask

AMPTHILL
01525 406330

UNIT F, AMPTHILL INDUSTRIAL ESTATE, STATION ROAD, AMPTHILL, MK45 2QY