

Vol 39 | No.2

FREE

# **CLOPHILL** **SPOTLIGHT**

MARCH 2017

**LOVE YOUR  
LOCAL NEWS**

//

## A word from the Editor...

### *Let's get nosy!*

Go on – you know you want to! It's **Red Nose Day** on **Friday 24th March** so why not have a bit of fun while raising money for good causes.

You could hold a quiz night, organise a fancy dress competition, do a sponsored cycle, give up sweets – the list is endless.

Whether you're at home, work or school it's easy to get involved.

Between fund-raising, don't forget to flick through this issue of Spotlight because, as ever, there's plenty to read. There are articles to keep you entertained and informed (Do you know what a 'riparian' is? Nope, I didn't either until I read Spotlight) plus diary dates to get you out and about. All that – *and it's free!*

***See you back here in April. x***



//

## The magazine staff

EDITOR/ADVERTISING  
MANAGER

Helen Gent  
editorial@clophillspotlight.co.uk  
ads@clophillspotlight.co.uk

864836

DESIGN MANAGER

Chris Abrahams  
cmabrahams@yahoo.co.uk

DISTRIBUTION MANAGER

Pete Liddle

860113

TREASURER

Richard Pearson

861110

COPY DEADLINE

**20th of the month**

Don't forget you can now read Spotlight online at  
**[www.clophillspotlight.co.uk](http://www.clophillspotlight.co.uk)**



**CLOPHILL METHODIST CHURCH**

**invites you to their**

# **SPRING CONCERT**

**with the**

# **FLITWICK SINGERS**

**on Saturday 22nd April**

**at 7.30pm**

**Tickets £6 (including light refreshments)**

**For tickets & further information  
contact 01525 860695**

# News from Clophill Heritage Trust



Last month, a hundred people braved the cold to enjoy a very modern interpretation of *Romeo & Juliet* by The English Gardner Theatre Company at the Old Church. Looking forward to later this month, we'll be serving **Mother's Day Cream Teas** in the Nest between 2pm and 5pm on Sunday 26th March – we have a few tables left, so book online to reserve yours.

On 16th April, the Eco Lodges, in partnership with **Teaching Talons**, will be hosting 'Animal Encounters' when kids can come and meet hedgehogs, giant insects, reptiles, rabbits and even have their photo taken with

As the weather improves, you can now book private **Tower Tours** of the Old Church online.

Work is in full swing around the site getting it ready for spring planting, and we're very thankful for all our volunteers who help out with various aspects of work. If you'd like to volunteer at Clophill Eco Lodges please get in touch with one of us: Kayleigh Waight (07889 980872), Emily Hakansson (07825 051667), Ali Bradbury (07894 710001) or call the lodge phone on 07935 911207.



For our full programme of events and to make online bookings go to  
[www.clophillecolodges.org.uk/events](http://www.clophillecolodges.org.uk/events)  
For Tower Tours, go to [www.clophillecolodges.org.uk/book-a-tower-tour](http://www.clophillecolodges.org.uk/book-a-tower-tour)

# Are you a Riparian?



Did you know that if you own land or property next to a river, stream or ditch you're a 'riparian landowner'? This means you have certain responsibilities, such as keeping the banks clear of any obstructions that could increase flood risk, clearing away litter and maintaining the bed and banks of the watercourse and the trees and shrubs growing on the banks.

I myself am a Riparian as my house and garden border Mill Stream, which runs past the rear of the Flying Horse, alongside the back gardens on the High Street and under the old Mill House at the corner of the High Street and The Causeway. On many occasions I've contacted the drainage board to dredge, removing the excess silt from the stream. I've also removed items that have been dumped into the water, including bottles, tin cans, unwanted garden plants, tree logs – one of which was around 10 feet long – and a child's rusty bike.

While Riparians in Clophill must take responsibility for their own section of river, stream or ditch there are also parts of Mill Stream not bordering houses that still require maintenance. Recently, the Environmental Agency IDB (Internal Drainage Board) cleared up the top section of the stream around the bridge, various drainage ditches and sections of the River Flit.

To help maintain the area on the west side of the bridge, myself, Ralph Brough, Jane Breed, Kate Breed, Barry Breed and Eric Shegog have formed an Action Group as we believe it's important to keep up the maintenance of this area for the benefit of our community. To find out more about what we do email [peterelston999@gmail.com](mailto:peterelston999@gmail.com) or call **01525 861813**. *Peter Elston*



- If you're a riparian check your responsibilities at [www.gov.uk/government/publications/riverside-ownership-rights-and-responsibilities](http://www.gov.uk/government/publications/riverside-ownership-rights-and-responsibilities)

## St Mary's Church News



Back in January, five of the young choristers who sang at the Carol Service were treated to their annual trip to Haynes Village Pantomime, which this year was Alice in Wonderland. Also that month, our **coffee and cake morning** raised £314, before Gift Aid, for Janina, the girl we sponsor in Paraguay.

A reminder that there will be a service for **Mothering Sunday** at 10.45am on Sunday March 26th. Also, a **Lent course** on prayer will be held on Mondays at 2pm in the Rectory at 4a North Lane, Haynes. Please contact the Rector on 01234 381235 if you're interested in attending. *Adrienne Gordon*



# Clophill & District Flower Club



It felt like spring had arrived early when Sarah Long entertained us with her delightful **'Spring Arrangements'** last month. Sarah started off as a pianist but her love of designing with flowers led to her becoming a florist with her own business. Mum to a three-year-old son, she now works part time at a local floral wholesaler.

For her first design, Sarah used a base of twigs fixed onto a wreath ring which was placed on a clear container with another saucer-shaped container underneath. A variety of spring flowers such as daffodils, narcissus and tulips in yellow and white were threaded through the twigs into water in the base. The mass effect of the bulbs made us forget the cold weather outside.

The next arrangement saw pots of primroses in white, yellow and purple placed on a base of moss and bark, with the addition of blue irises, muscari and hyacinths along with catkin twigs to give height. Sarah held our interest with tales of her early life on a small farm and the saga of building an extension on her present home. While chatting she produced an arrangement in a bark container using orange tulips, gold ranunculus and rust-coloured spray carnations.

White formed the central colour of another of Sarah's displays when she married white branches with white hyacinths, tulips, carnations and wax flower. Loops of bear grass were added for the final effect.

Finally, Sarah produced a 'whoosh' of foliage and flowers on a posy pad covered in bark. Pink was the colour theme for the spring flowers with dark calla lilies and pussy willow. Hyacinth bulbs were removed from the soil and wired onto the stems. The bulbs will grow quite happily as they contain all the nutrients required.



As usual, the arrangements were raffled at the end of the evening. A number of happy members went home with a complete design as Sarah also included all the containers. *Brenda London*

• For details of our club activities go to [www.clophillflowerclub.com](http://www.clophillflowerclub.com)

## Support Your Local Fete

**Clophill's annual fete and village event** will take place on Saturday 20th May in the grounds of St Mary's Church. The aim is to provide enjoyment for all ages and to involve as many organisations and individuals as possible so that they can promote themselves and raise money for their own causes. We hope everyone will support this popular event.

If you'd like to help on the day please contact us. We need help setting up and clearing away, sideshows, refreshments and assisting with running stalls.

*Gill Jones and Carolyn Cranswick*

For further information, phone **01525 861058**

# Two parcels of land to rent

## Call for expression of interest

Clophill Parish Council has a great opportunity to rent up to 9.7 hectares (24 acres) of land on an annual basis under a Business Farm Tenancy. The land is split across two locations – Holly Bush (5.7 hectares, or 14 acres) and Hay Close (4 hectares, or 10 acres) – to the West of the Slade and East of the A6 in Clophill.

The land can be rented as a whole or in smaller parcels, and can be taken by a single individual or a group under a collective arrangement. The tenant would need to provide adequate fencing for grazing certain livestock or the land can be used for agricultural purposes. Rent is payable annually in advance, and the tenant would be responsible for the full maintenance of the land.

If you're interested and would like to know more, please contact James Stirling, Clerk to the Council, at [clerk@clophill-pc.gov.uk](mailto:clerk@clophill-pc.gov.uk) or by post at James Stirling (Clerk), Clophill Parish Council, c/o 31 Plum Tree Road, Lower Stondon SG16 6NE.

In order for your proposal to be considered you must include:-

- your proposed requirements
- what your budget is
- grazing or agricultural
- contact details

**Closing date for an expression of interest is 5pm March 31st 2017**

St Mary the Virgin, Clophill

# Lent Lunches

**Raffle**



**Bring & Buy**

15th March  
22nd March  
29 March  
5 April

Clophill Methodist Church  
Beverley Court  
1 Kiln Lane  
St Mary's Church

**12 noon-2pm**

Donations will be given to **Five Talents**

a small charity who support the rural poor in Kenya, Uganda and Tanzania

*Everyone very welcome*

For information phone Gill Jones 01525 861058 Please call if you require transport

# New Discovery Centre on Flitwick Moor

## The Jack Crawley Memorial Barn

Last June Baroness Young of Old Scone – president of the Wildlife Trust for Bedfordshire, Cambridgeshire and Northamptonshire – opened the new discovery centre on Flitton Moor. The centre is named after a local artist, Jack Crawley, who died two years ago, aged 92. For most of his life, Jack worked as a technical illustrator and was regarded as one of the best in the country. He travelled the country with friends on his vintage motor bikes,

doing superb watercolours. And he was also a Spitfire pilot during the 2nd World War.

The discovery centre has information on the whole of the Flit Valley, from its source near Chalton up to Shefford. The display shows a wealth of historical and geological information as well as detailing 20 wildlife sites in the valley.

The course of the River Flit has been shaped by more than 100

million years of history. Through this landscape we can learn about our own history – discovering how people moved about and why they chose to make their homes here.

People have lived in the Flit Valley for nearly 10,000 years. We know this because of the stone tools they left behind. Today the Flit Valley is largely arable landscape with towns and villages surrounded by a patchwork of fields. But many important areas of wildlife habitat still survive here. Some of the most important wetlands in Bedfordshire survive along the river. There are flower-rich meadows, ancient woodlands where trees have grown since the Middle Ages, and heaths that developed on poor Greensand soils exhausted by Medieval agriculture.

There is an important geological relationship between the Greensand Ridge and the wetlands in the Flit Valley, as many of those wetlands are fed by springs bubbling out under the Greensand. The Flit Valley wetlands include the Wildlife Trust's Flitwick Moor: a unique complex of peaty fen, mire, wet woodland and meadows bisected by the river and many drains and ditches, plus a string of smaller wet woodlands and meadows.

- The Discovery Centre can be accessed from Brook Lane in Flitton or from the path that follows the river from Joe's Close and Mill Lane, in Greenfield. For more information contact **David Sedgley** on **01525 714961**.







Clophill  
Preschool

# The Great Clophill Easter Egg Hunt and Indoor Fayre

Saturday, 8 April 2017, 10am-12pm  
Clophill Village Hall

Chocolate  
treat for every  
child entering  
the hunt

Stalls to look  
around,  
tombola and  
refreshments

Last entry to egg hunt 11.30am  
Clues for 2 age ranges, 2 to 5  
and 6 to 9. £2 per child

For more information, email  
[clophillpreschool@gmail.com](mailto:clophillpreschool@gmail.com)

Children must be accompanied by an adult and children's  
safety is the responsibility of parents/guardians.

[www.clophillpreschool.co.uk](http://www.clophillpreschool.co.uk)

# Clophill Preschool News

Carrying on from last month when we had an enormous turkey in for the children to stroke during Vets Week, we extended our role play with more animals. Lisa from K9Trendi Groomers came in with **Poppy the Poodle** and showed us how she gives her fur a trim. All the children were able to give Poppy a brush, which they really enjoyed. We also had a duck here and the children were most amused when it pooped on the floor. It wasn't quite so funny when the duck escaped at the end of the day and had Chris and Imogen flapping arms and chasing through the undergrowth trying to catch it!



We also had a doctor's surgery when Carrie Hollick from EMT came in to do a **First Aid session** with the children. They bandaged up Big Ted after he had a work-related injury and got a chance to have a go on each other, too. With all these visitors, the children are really developing their questioning skills and learning a lot about occupations.

Even though the weather outside was chilly we enjoyed **playing at the 'beach'**. We set up a big tray full of sand inside and the children took off their socks and shoes to feel it between their toes. They had fun making sandcastles as well. When the weather took a turn for the worse outside Chris got the flour and shaving foam out and the children enjoyed putting on their wellies and making 'snowy' footprints across the grass. Then the snow began to fall as, on Chris's instruction, the children threw the flour in the air – much to the delight of all the staff.



For **World Book Day** we had our own Book Week when the children brought in their favourite books from home. We read them together and made a brilliant display with children's comments about the story's they like the best. Susan Samm also came in to tell fantastic stories that the children were enthralled by – what a great way to round off our Book Week, thank you Susan.



We did **Messy Play** as usual at Clophill Toddler group and our staff made heart-print pictures with the children. We are there the first Friday of every month with lots of messy and malleable play for the children to get involved in.

Don't forget it's our **Easter Egg Hunt and Indoor Fayre** on Saturday 8th April, 10am-noon. This year we have a great range of stallholders, from candy floss to homewares to children's clothes. We've also got lots of fun activities such as tombolas, nail painting and tattoos. Refreshments will also be available so why not pop along for coffee, cake and a mooch.

- Contact Imogen on **07765 887868** or Chris on **07936 006381** or email. Our website is [www.clophillpreschool.co.uk](http://www.clophillpreschool.co.uk)

## Christine's quick 'n' easy recipe

# *Farfalle with Prawns and Peppers*



### INGREDIENTS Serves 4

- 2 yellow peppers
- 1 red pepper
- 300g uncooked prawns
- 300g farfalle pasta
- 4 stalks of flat leaf parsley
- extra virgin olive oil
- salt and freshly ground pepper



1. Pre-heat the oven to 200°.
2. Place the peppers on a baking tray and roast until almost burned.
3. When the peppers are ready, allow to cool slightly then remove the skin and discard the stalks and seeds.
4. Cut the yellow peppers into thin ribbons.
5. Liquidise the flesh of the red pepper.
6. Wash and de-vein the prawns and cook them in a large pan of boiling salted water for about 5 minutes. Remove prawns with a skimmer and set aside to cool.
7. Using the same water as the prawns – to retain flavour – cook the pasta until al dente.
8. Whilst the pasta is cooking place the ribbons of yellow peppers, the liquidised red pepper and the prawns in a large serving bowl. Drizzle with olive oil, season to taste and add in most of the parsley, roughly chopped with stalks removed.
9. Once the pasta is cooked, drain well and add it to the ingredients in the bowl then mix thoroughly.
10. Sprinkle with the remaining chopped parsley and serve immediately.

# St Mary's School News



We've got lots planned for this half term, including our popular Lent Appeal Day which will once again include our popular outside and inside games. We're supporting the charity Asthma UK and the children will be collecting sponsorship for the activities that they participate in.



Year 3 and 4 children are visiting The Stables in Wavendon to see seeing 'Ulla's Odyssey'. This child-friendly opera carries a strong environmental message and explores issues of human impact on the natural environment as well as personal responsibility and friendship.

Our Maypole club starts shortly for Years 2, 3 and 4 and you can look forward to seeing the annual Maypole display by the children at the church fete in May. Meanwhile, Friends of St Mary's are holding their popular film night in March.

We're looking forward to hearing from the 'School Council' about what they have planned for Red Nose Day on 24th March and we'll complete the Spring term with an Easter Service in church on 4th April.

**Our value for the second half of the term is *Endurance & Perserverance***

In school we'll be reflecting on the importance of not giving up even when we find things difficult. We'll also be thinking about the types of things that last forever and that withstand difficulties.



Sainsbury's  
**Active Kids**  
Eat well • Move well • Live well

## Sainsbury's Vouchers

We have a collection box in the school porch if anyone would like to donate their Sainsbury's vouchers – ***thank you.***

---

## Acorn Nursery News

Last half term our theme of Bears came to an end and we celebrated with a Teddy Bears Picnic with Chestnut children in the hall. The children enjoyed making sandwiches and decorating cakes to look like paws before eating them.



Our new theme is Turrets and Tiaras and we'll be looking at fairy tales, castles and towers, knights and princesses, crowns and shields, dragons and magic! We've already made our castle for our display and have added kings, queens, princes and princesses – we hope the dragons stay away!

On Pancake Day we had pancakes with honey, lemon or sugar, and we've also had a vegetable tasting day and made a graph to see our favourite vegetables.

Outside, our daffodils have started to flower and we've planted some pea seeds ready for the warm weather to help them grow.

# Funding boost for Greensand Country landscape



A £1.6 million injection from the Heritage Lottery fund will help to preserve the Greensand Country – an area encompassing the Greensand Ridge and the surrounding river valleys that stretches from Leighton Buzzard to Gamlingay via Clophill.

The funding will be used for a range of projects to reverse the gradual decline in the character of this local landscape, such as enhancing patches of grassland or heathland, restoration of sandstone walls, increasing diversity of wildlife and better management of woodlands. There will also be events, workshops and festivals to learn more about the landscape, its history and its hidden stories along with training schemes to learn the skills needed to look after the landscape for the future.

The projects will be delivered by the Greensand Country Landscape Partnership – a range of partners including the RSPB, The Wildlife Trust for Bedfordshire, Cambridgeshire and Northamptonshire and Clophill Heritage Trust – who will work with landowners and local communities.

- For more information or to get involved contact Claire Poulton on [clairep@bedsrcc.org.uk](mailto:clairep@bedsrcc.org.uk) or go to <http://bedsrcc.org.uk/rural/greensand-country-landscape-partnership>
- 

## Clophill P3 Group

*P3 brings together local councils, community groups, parish councils and volunteers to open up and maintain local paths and green spaces and to encourage people to use and enjoy them.*

For many years, David Myers looked after Clophill's public spaces and footpaths for the Parish Council. You may not have been aware of his activities but they involved liaising with CBC about work required and also the use of scateurs in extremis! You'll have enjoyed the fruits of his labour without knowing it.

Sadly, David is no longer with us to keep our paths and spaces open and enjoyable, so I've taken on this role in his stead. I'm looking to form a small band of volunteers willing to take part in maintenance activities and report problems that need the attention of the Countryside and Access departments at CBC.

Central Beds provides support to local P3 groups and we already have equipment that has been used at the playing fields and the Readshill acid grassland site for clearance and maintenance. CBC also provides training in the use of power tools, which is required before we can tackle brush-cutting and hedge-strimming.

If you'd like to become involved in any way, please do get in touch. I'll co-ordinate our activities and training. You can also simply let me know of problems on public footpaths and communal spaces and I'll either pass them on to CBC or devise a plan to deal with them. I can be contacted at [janebreed@hotmail.com](mailto:janebreed@hotmail.com) or on 01525 860834

- **Look out for the CBC P3 leaflet at The Green which gives more information.**
-



*These notes are a resume only. Official minutes are available on the internet and notice boards. All official correspondence should be sent to the parish clerk and not individual councillors.*

Our February meeting saw the parish council members discuss a range of subjects, and even the co-opting of a new councillor – Tom Caplin. We look forward to welcoming Tom to his first official meeting at the end of the month.

## **Public Consultation & Lakes Update**

The most pressing item that we want to get across is the 'Public Consultation & Lakes Update' event on the evening of Tuesday 14th March. It's all about getting your voices heard for the 'Clophill Neighbourhood Plan' – it's so important that the 'Neighbourhood Plan Team' works closely with the wider public on this plan. This meeting will be an opportunity for you to influence how decisions affecting Clophill are made. There will be an update about the latest news regarding the Clophill Lakes site. It will also be an opportunity to meet fellow villagers and local organisations for an informal chat over a cup of tea.

There will be a short online survey released around the 14th March that we hope you can fill out, either at the event or at home – it should only take a few minutes. We'll ensure the web address is circulated widely across local social media pages.

*The evening starts at 7.30pm – please do come along before 9.30pm and say hello.*

## **The Great British Spring Clean**

A massive thank you to those who responded to our request for support for 'The Great British Spring Clean', which took place between 3rd and 5th March. Hundreds of communities across the country took part in the event, so it was great that Clophill was able to get involved. We know how passionate many of our residents are about dog mess and litter being left in public spaces by inconsiderate individuals – as a result the parish council will always actively support any efforts to improve the hygiene and aesthetic of our generally picturesque village.



## **Bank closure in Ampthill**

Some of our residents have recently approached us with their displeasure about the news that Ampthill's last remaining bank, Natwest, is set for closure. As a result, we've arranged for the village shop to hold a copy of a petition against the closure – please do sign it if you feel strongly about the issue. Thanks to Deepak for agreeing to accommodate the petition.

## **Parish Council website**

We've noted a huge increase in traffic to our Parish Council website, [www.clophill-pc.gov.uk](http://www.clophill-pc.gov.uk). Our clerk, James, has put a great deal of work into improving the look and functionality of the site and as a result year-on-year unique visitors for January have increased by 500%. If you have any feedback or suggestions for our website please email James on [clerk@clophill-pc.gov.uk](mailto:clerk@clophill-pc.gov.uk)

# Clophill Parish Council

Continued

## Parish Council mailing list

We can now email residents a regular newsletter with news, events and announcements involving Clophill and the Parish Council as well as other groups connected with the Parish Council and local community. When you subscribe to the mailing list, we'll email you one or two newsletters a month. Be assured that we won't pass on your details to any other parties. The only information we hold is your name, location and email address. The mailing list service will supplement the updates posted on noticeboards as we believe this service will reach a larger audience. For more information and to join, please visit [www.clophill-pc.gov.uk/subscribe](http://www.clophill-pc.gov.uk/subscribe)

## Planning

### CB/17/00293/FULL

Location	Land at 118B High Street	
Proposal	Demolition of existing dwelling and outbuilding and erection of six detached dwellings with associated garaging, parking, landscaping and ancillary works. The bulk of this development is outside the Village settlement envelope and impacts on a conservation area. Also, overbearing aspect of the properties to neighbours.	<b>OBJECT</b>

### CB/17/00082/FULL

Location	Coleman's Yard, Great Lane	
Proposal	Construction of a new timber-clad commercial storage building (use Class B8) to replace existing wooden frame.	<b>SUPPORT</b>

### CB/17/00524/FULL

Location	6 Little Lane	
Proposal	Single-storey rear extension, single-storey front extension, insertion of roof windows and alterations to fenestration materials.	<b>SUPPORT</b>

### CB/17/00324/FULL

Location	2 The Gables, Great Lane	
Proposal	Replacement two-storey detached dwelling. This is a revision of the last application – which had been previously refused by planning in January – however the plans have changed little from the original.	<b>OBJECT</b>





The next Parish Council meeting will take place at the Village Hall  
at 7.45pm on Tuesday 28th March 2017

## Allotment available to rent

An allotment in The Slade, including fruit cages and a lock-up unit,  
is available for rent from Clophill United Charities.

**For further information, please contact Gillian on 01525 860539**

# What's on in and around Clophill

APRIL		<b>Saturday 8th</b> <b>The Great Clophill Easter Egg Hunt and Fayre</b> <i>See Poster in this issue for details.</i>
		<b>Sunday 16th</b> <b>Easter Sunday Family Day</b> Egg hunting, arts and crafts and the resident magician, The Stone Jug, from 4pm
		<b>Saturday 22nd</b> <b>Spring Concert with the Flitwick Singers</b> Clophill Methodist Church, 7.30pm <i>See Poster in this issue for ticket info.</i>
		<b>Saturday 22nd</b> <b>Live Music at the Stone Jug</b> Dance the night away with vocalist Amy B. From 8pm
MAY		<b>Saturday 20th</b> <b>Clophill Fete</b> St Mary's Church, noon-4pm.

## On throughout the month...

### Fridays...

- **Clophill Toddler Group** Clophill Village Hall, 10am-noon. See 'Village Groups' for contact details

### One Saturday a month...

- **Messy Church** 4pm-6pm, Clophill Methodist Church. Dates: 18 March; 15 April; 13 May; 17 June; 15 July; 23 Sep; 14 Oct; 18 Nov; 16 Dec. All-age craft activities, worship and a meal for all the family. No fixed charge, donations welcome, children must be accompanied by an adult. See 'Village Groups' for contact details.

### CHURCH SERVICES

#### Regular services at St Mary's Church, Clophill

1st Sunday	8am, Holy Communion; 10.45am, Family Praise
2nd & 4th Sundays	10.45am, Parish Communion
3rd Sunday	10.45am, Morning Prayer/Praise
5th Sunday	10am, Benefice Services

#### Regular services at Clophill Methodist Church

1st, 2nd, 4th, 5th Sundays	10.30am Morning Service
3rd Sunday	10.30am All Age Worship Service

If you have any diary dates that you would like included on this page, please email [clophillspotlight1@hotmail.co.uk](mailto:clophillspotlight1@hotmail.co.uk)



Bedfordshire  
Cambridgeshire  
Northamptonshire

## Wildlife walks & talks



### Chalk Grassland Management

**Monday 20th March, 7.45pm, Maulden Church Hall**

Join Graham Bellamy as he talks about his special area of interest during over 40 years of endeavour 'on the chalk' – helping realise the Living Landscape concept for the North Chilterns Chalk. £2 per adult

**Open to all. There is no need to reserve a place for talks – just turn up!**

**For additional information please email [flitvale.info@gmail.com](mailto:flitvale.info@gmail.com)**

**or ring Ann on 07890 347327 after 6pm or at weekends**

# Village groups

Beverley Court	860920
Brownies	<a href="https://enquiryym.girlguiding.org.uk">https://enquiryym.girlguiding.org.uk</a>
Clophill Community Care	Duty Contact 07791 773705
Clophill Heritage Trust	Ali Bradbury 07894 710001
Clophill St Mary's C of E Lower School & Nursery	Sharon Kempson 860206
Clophill Toddler Group	Caroline Daniels 07734 495348
Clophill United Charities	Gillian Hill 860539
Conservation Group	Brian Adams 862297
Flower Club	Gillian Hill 860539
Friends of the Cheshire Home	Sue Pearson 861110
Funzone After School Club	07903 167493
Greensands Community Choir	Luke Howard 07975 520085
Indoor Carpet Bowls	Tony Meredith 860754
Messy Church	Victoria Higgins 07920 568861
	<a href="mailto:victoriajhiggins@hotmail.co.uk">victoriajhiggins@hotmail.co.uk</a>
St Mary's PTA	Julia Skelton 07774 993973
Scouts and Cubs	<a href="http://www.scouts.org.uk/get-involved">www.scouts.org.uk/get-involved</a>
Tea and Chat	Anita Errick 860695
Tuesday Club	Betty Hampson 860750
Village Hall Booking Secretary	Marilyn Browning 07821 643936

## Parish Registers for March

1817		1917	
<b>Marriages</b>		<b>Baptisms</b>	
March 30	George Hare to Ann Barnes	March 4	Anthony Tuffnell
<b>Burials</b>			Kathleen Odell
March 9	? Bidford (?), widow	March 11	Doris Mary Gudgin (?)
1867		1967	
<b>Baptisms</b>		<b>Baptisms</b>	
March 3	Francis Peat	March 12	Carole Annette Bannister
	William Henry Bottoms	<b>Burials</b>	
	Dorcas Elizabeth Stimson	March 7	Henry Arthur Oakley, 84
	Sarah Gobby		
<b>Marriages</b>		<b>ST MARY'S REGISTERS FOR FEBRUARY</b>	
March 8	John Lomas, 22, soldier, to Charlotte Webb, 22	<b>Funeral</b>	
		February 22	Valerie (Molly) Young

# Useful numbers

<b>Gas</b> (Emergency)		0800 111999
<b>Electricity</b> (Emergency)		0800 7838838
<b>Emergency Fire/Police/Ambulance</b>		999
<b>Water/Sewage</b> (Anglian Water)		0845 7145145
<b>Telephone</b>	(Customer Services) 150	(Faults) 151
<b>Highways Department</b> (Central Bedfordshire Council)		0300 3008049
<b>Benefits Agency</b> (Bedford office)		01234 361500
<b>Registrar's Office</b> (Births/deaths/marriages)		0300 3008089
<b>Rail</b> (Enquiries)		0845 7484950
<b>Buses</b> 01234 262151	(Link A Ride) 01525 840511	(Flittabus) 01582 406561
<b>Luton Airport</b>		01582 405100
<b>Swimming</b>	(Flitwick) 01525 717744	(Robinson Pool) 01234 212479
<b>LIBRARIES</b>		
	<b>Bedford</b> 01234 350931	<b>Ampthill</b> 01525 402278
	<b>Barton</b> 01582 881101	<b>Flitwick</b> 01525 715268

## LOCAL GOVERNMENT

<b>Central Beds Offices</b> (Chicksands)		0300 300 8000
<b>Mid-Beds MP</b>		Nadine Dorries 01462 811992
<b>Central Bedfordshire Councillors</b>		Michael Blair 01525 404513
		Paul Duckett 07988 184061
<b>Clophill Parish Council</b>		Paul Downing 01525 860350
	(Clerk)	James Stirling 01462 887226

## HOSPITALS

<b>Bedford</b> (North & South)	01234 355122	Admissions 01234 261150
		Appointments 01234 359012
<b>Luton &amp; Dunstable</b>		0845 1270127

## DOCTOR'S CLINICS

<b>Ampthill</b>	(Houghton Close) 01525 300898	(Oliver Street) 01525 631395
		(Greensands) 01525 631390
<b>Shefford</b>	Enquiries 01462 818620	Appointments 01462 810034
<b>Barton</b> 01582 528700		<b>Flitwick</b> 01525 715300

## POLICE

<b>County Police HQ</b>	Non Emergency	101
<b>Ampthill Station</b>		01234 841212
<b>Clophill Local Policing Team</b>		101
		01234 842613

## CHURCHES

<b>St Mary's Parish Church</b>	Liz Henman	01525 860108
<b>St Francis RC Church, Shefford</b>	Ian Gordon	01525 860875
<b>Clophill Methodist Church</b>	Jim Davies	01525 860829
<b>Baptist Churches</b> (Ampthill) Doreen Gibbs	01525 862424	(Maulden) Ian Crawford 01525 634325
		(Shefford) Hazel Arnold 01462 812564

## SCHOOLS

<b>Clophill St Mary's C of E Lower School &amp; Nursery</b> (Headteacher Mrs K Bingley)	01525 860206
<b>Harlington Upper School</b> , Harlington	01525 755100
<b>Preschool</b> clophillpreschool@gmail.com (Chris)	07936 006381 or (Imogen) 07765 887868
<b>Redborne Upper School</b> , Ampthill	01525 404462
<b>Robert Bloomfield Middle School</b> , Shefford	01462 628800





## PETER SHARPE BUILDING SERVICES LTD

**Call us first for ALL your building works  
and get reliability, quality & sensible prices.**

- Domestic extensions
- Design & build service
- General building works, drives, patios
- Carpentry, kitchen fitting, wall & floor tiling
- Laminate flooring & hardwood flooring
- Mini digger and driver hire
- Electrical installations including Building Regulation part P certification
- Roofing repairs carried out
- Conservatories, UPVC windows

**‘BEDFORDSHIRE’S PROFESSIONAL BUILDER’**

**01525 872762 / 07850 803021**

**email: [psbsltd@btconnect.com](mailto:psbsltd@btconnect.com)**



**Painter and Decorator**

**Call Chris : 07950714579**

*facebook: @christopherthepainter*

*email: [chris.minihane@btinternet.com](mailto:chris.minihane@btinternet.com)*

*do you want your home brightening up?*

*all interior & exterior work*

*no job too small!*

*free no obligation quote*

*25 years experience & fully insured*



# Bowbelles Grooming Room

Dog grooming in an intimate, purpose-built grooming room with top-of-the-range equipment

**Baths or full groom • Micro chipping service • Fully insured**

**Call Becky on 07746 546410**



Find us on facebook

6 Little Lane, Clophill MK45 4BG

Telephone  
**01525  
860526**

## *The Stone Jug*

**A Free House**  
BACK STREET, CLOPHILL

2017 sees us celebrating our 35th anniversary – yes, it really has been THAT long! However, it's not out with the old and in with the new as we believe in traditional, honest values – which is why our smiler, Bob, and the matriarch, Joyce, are still holding court! Make 'The Jug' part of your tradition in 2017 and experience a 'proper pub for proper people', as my late dad used to say. Cheers!

- 5 real ales, including 2 guest pumps that change frequently (see our Facebook page for details)
- selection of wines and Prosecco by the glass – or even better, by the bottle
- home-cooked lunches Tues-Sat, 12pm-2pm



**REMEMBER OUR MOTTO**

**"A VISIT TO THE JUG IS BETTER THAN GOING TO A PUB"**  
**CHEERS JOYCE & VIKKI**

[www.stonejug.co.uk](http://www.stonejug.co.uk)

[www.facebook.com/thestonejugclophill](http://www.facebook.com/thestonejugclophill)

# Fancy an ad in Spotlight?

You can advertise for as little as £50 a year!

Email [ads@clohillspotlight.co.uk](mailto:ads@clohillspotlight.co.uk)



Matthew Dibden

- Architectural Design
- Planning Applications
- Building Regs

Office: **01525 860186**

Mobile: **07972 197754**

Email: **matt@daniel-design.co.uk**



**www.daniel-design.co.uk**



**Tel: 07966 665654**

Web: [www.emtacademy.co.uk](http://www.emtacademy.co.uk)  
Email: [carrie@emtacademy.co.uk](mailto:carrie@emtacademy.co.uk)



## EMT Academy – Emergency Medical Training is a Clapham based First Aid Training company

All EMT Academy trainers have worked professionally as Emergency Medical Technicians, Paramedics or Police Firearms Medics so we can bring real life experience and scenarios to your course.

### Courses Available

- First Aid at Work
- First Aid at Work Requalification
- Emergency First Aid at Work
- Annual Refresher
- Automated External Defibrillator
- Family First Aid
- Paediatric First Aid
- Basic Life Support
- Bespoke First Aid\*

Our feedback shows that the one-to-one practical skills taught by our instructors ensure students feel confident to deal with any unexpected medical emergency.

If you are a parent, grandparent, babysitter, childminder, carer, employer or an organisation\* e.g. sports clubs, Guides/Scouts, equestrian, please contact us, we will be happy to discuss which course will best suit your needs.

# David Carpenter

## BUILDING SERVICES

Friendly local craftsman and restorer Est. 1986

MOST BUILDING WORK UNDERTAKEN INCLUDING  
Carpentry and Joinery, Bricklaying, Roofing, Plastering, Tiling  
And much more

Please call me on: 01582 881015 Mobile: 07954 828695  
to arrange a visit to discuss your requirements.

Free estimates provided

References available

We've got  
the space  
for you!

Introducing our  
quarter-page ad size  
– want one?

Contact our Advertising Manager  
at [ads@clophillspotlight.co.uk](mailto:ads@clophillspotlight.co.uk)

**OVENCLEAN**  
*The original oven cleaning specialists*

We clean all types of:

- Ovens
- Grills
- Ranges
- Hobs
- AGAs
- Microwaves
- BBQs
- Extractors

Fully insured, and a proud  
member of Checkatrade.com

For a quote call Clive on:  
**07949 233089 or**  
**0800 840 7127**

[www.ovenclean.com](http://www.ovenclean.com)

**£5**  
OFF

Practical members of  
**Checkatrade.com**  
Where reputation matters



# Mayfield Dog Lodge



**Home-From-Home Day Care and Boarding**

**07966 238249**

**Based in Clophill \* Facebook \* Insured**

Offering long and varied walks in beautiful countryside, on or off lead (you decide) with no time restrictions. Your dog(s) will always have company, someone to play with and given care, attention, love and cuddles in the warmth and comfort of a family home.

## **Mindfulness Movement & Meditation**



**RELAX**

**STRETCH**

**MEDITATE**

**This class teaches relaxation & breathing techniques, together with gentle yoga-based stretches and postures**

**Clophill Centre: Thursdays 9.30am-10.45am**

**Contact Ann for more information and booking**

**0779 1171980 ann.okeeffe@btinternet.com**

## **CLOPHILL TODDLER GROUP**

*Understanding the importance of a child's play*

**LOTS OF TOYS, SPACE AND FRIENDS  
FOR BABIES AND TODDLERS UNDER 3**

**FRIDAYS 10am – 11.30am at the Village Hall  
See 'Village Groups' for contact details**





# Linda Allsop

PHYSIOTHERAPY



Chartered  
Physiotherapist  
with over 30 years  
experience in both  
the Private Sector  
and the NHS.

01462 711978 | 07989 257026  
[www.linda-allsop-physio.co.uk](http://www.linda-allsop-physio.co.uk)

## SAVAGE ACCOUNTANTS

- Accountants who know how businesses run
- Qualified Chartered Accountant and Chartered Tax Advisor
- Friendly Accountants who listen to your needs
- A wide range of services offered

Call

01525 552250



for a FREE initial meeting

[www.savageaccountants.co.uk](http://www.savageaccountants.co.uk)

Company Registration Number: 09214570  
**Cure your tax headaches**

## PERSONAL DOG WALKER

£10 per hour  
£6 per half hour

- First Aid Certified
- Insured



Text or call Corrane on  
**07576 473373 or 01525 630740**



Corrane's personal dog walking

## SJ TAX & ACCOUNTING

### QUALIFIED ACCOUNTANT

Professional friendly services,  
Tax advice, Free initial consultation,  
Sole trades, Ltd companies,  
Bookkeeping, Payroll,  
CIS, VAT & Tax

**DOWNLOAD OUR FREE APP  
"SJ TAX LTD"**

contains lots of free tax info and  
a free income and expenses tracker

**e: [sally@sjtax.co.uk](mailto:sally@sjtax.co.uk)**

**t: 01234 831997**

**m: 07899 808592**

*Greensand Community Choir*  
**LOVE SINGING!**  
*sing with an exciting local choir...*



Come along to your local **community choir**,  
 for men and women of all singing abilities!  
 Mondays, 8.00-9.30 pm at St. Mary's Church, Clophill.

- Come and sing with an exciting new local choir led by a professional musical director
- Uplifting music in a variety of styles: musicals, classic pop, folksongs, sacred and world music
- Welcoming singers of all abilities - no audition, no need to read music!
- New members - come along any time for a free taster



Enquiries to:  
**greensandcommunitychoir@gmail.com**  
 or ring Luke on: 01525 838199

## ARCHITECTURAL DRAWINGS AND BUILDING DESIGN SERVICES

Professional Architectural design services provided for all types  
 of private residential building projects including extensions, loft/  
 garage conversions, garages and outbuildings through to new build  
 dwellings with all necessary council approvals obtained.

For free estimates and advice contact Steve  
 Coates on Flitwick 01525 862457 or 07960 215053.

[stevecoates72@gmail.com](mailto:stevecoates72@gmail.com)

S & S Coates Surveying & Design, Unit 4 The Courtyard,  
 r/o 13 High St, Clophill, MK45 4AB.



# Mobile Hairdresser

Reasonable prices

Reduced price for 2 or more  
clients per household

Senior Citizens discount

Text or call Corrane on

07576 473373

01525 630740



...because everyone deserves to be pampered

Hot stone and Swedish massage  
Indian head massage  
Pregnancy massage  
Manicures & pedicures (Shellac gels available)  
Waxing  
Eye treatments  
Facials

Affordably priced... all with the convenience and  
comfort of being in your own home

Gift vouchers available

For more information and to make  
an appointment please contact:

Elizabeth Warfield (member of BABTAG)

Tel: 07816 789071

Email: lizziewarfield@hotmail.co.uk

THE BLUECAT



**Tel: 01525 861416**

[www.thebluecat.net](http://www.thebluecat.net)

Find us on Facebook @thebluecatcattery  
or email us at [enquiries@thebluecat.net](mailto:enquiries@thebluecat.net)

Now open! The Bluecat is a brand new,  
luxury cattery set in the quiet area of  
Jacques Lane in Clophill. With just 14  
cat chalets, we have time to fuss, pamper  
and play with your cat to its heart's  
content whilst in our care.

Please call for further information.

## Misty Double Glazing?

**KEEP YOUR WINDOW FRAMES...  
... WE JUST REPLACE THE GLASS!**

• UPVC • Aluminium • Or Wood

Because we replace just the glass the repair is a  
**Fraction of the cost** of a complete replacement window.



**mistydoublinglazing.co.uk**  
**QUALITY GLAZING SERVICES**

**01525 876808**

**WE ALSO REPLACE BROKEN...**

• Glass • Handles • Hinges & Locks  
**AND REPAIR...Patio Doors & Conservatories!**

# Clophill Preschool

Welcoming children  
from **2 years** of age...

in the fantastic setting of Clophill Village Hall. Our highly qualified team is led by a qualified Teacher and a Nursery Nurse. We provide a safe, secure and stimulating environment with brilliant ideas and activities that open the doors to learning and beyond. Come and see what your 2, 3 and 4 year olds can learn with us, our door is always open.

**clohillpreschool@gmail.com**  
**www.clohillpreschool.co.uk**

**Call Imogen 07765 887868**  
**or Chris 07936 006381**



## Welcome to Clophill St Mary's C of E Lower School and Nursery

St Mary's is a Voluntary Aided Church of England Lower School, graded 'Outstanding' by Ofsted, based in the village of Clophill.

We are a small friendly village school with close links to the local community, taking children aged from 2 years 7 months to 9 years.

St. Mary's is a Values Based school which provides children with a framework for living, tightly woven into the positive Christian ethos of the school.

Our vision at St Mary's is to provide a secure, inclusive, stimulating and enjoyable child centred environment, where all children are inspired to achieve their full potential by adopting a growth mindset. Our aim is that every child will develop as a caring, respectful member of the community and society as a whole. We will achieve this through a creative curriculum based on our values, reflecting the Christian ethos of our school.

**Please call us on 01525 860206**  
**to arrange a visit**



High Street, Clophill, Bedfordshire, MK45 4BE  
Tel: 01525 860206 [www.clohillstmarysschool.co.uk](http://www.clohillstmarysschool.co.uk)  
[nursery@](mailto:nursery@clohillstmarysschool.co.uk) / [generaladmin@clohillstmarysschool.co.uk](mailto:generaladmin@clohillstmarysschool.co.uk)





## The Happy Place.co.uk

On the Green beside the Post Office every Friday  
3.30-7.30pm

We are your local mobile fish and chip van, we have been parked on the green every Friday for the past 6 years.

We serve only the highest quality produce, cooked fresh to order and served to you by our friendly staff.

Why don't you pop down and come and  
Try Our Fry!

To avoid waiting in the cold, give us a call to

**place your order on: 07833 786108**

A big thank you to all our customers who have loyally supported us over the past couple of years.

### Clophill

### Mace

Post Office & Stores

- Fresh bread & dairy produce
- Newspapers & magazines
- Confectionery & tobacco
- Wines, beers & spirits
- Cards & stationery
- Household goods
- Baby products
- Toys & gifts
- Dry cleaning
- Photocopying
- Shoe repairs
- Post office counter services



#### Shop Hours

Mon - Sat 7.30 - 7.30 | Sun 8.00 - 1.00

#### Post Office Hours

Mon, Tues, Wed, Fri 9.00 - 1.00, 2.00 - 5.30 | Thu, Sat 9.00 - 1.00

**THE GREEN, CLOPHILL 01525 860988**

Proprietors:  
Deepak & Daksha Chandarana

**Stephens**

Your local removals & storage company



*Specialising in house removals and office relocations in the UK, Europe and Overseas.*

**REMOVALS**

Local, National, International

**STORAGE**

Secure & Containerised

**PACKING**

Full Or Part & Materials

**LONG ESTABLISHED REMOVAL COMPANY OFFERING A PROFESSIONAL, FRIENDLY SERVICE**

COMPREHENSIVE INSURANCE • FREE ESTIMATES

**01582 572967**

## ***STUART DREW ELECTRICAL SERVICES***

MEMBER OF THE ECA

PART P CERTIFIED QUALIFIED TO 17TH EDITION

From extra lights & sockets, to re-wires. Fault finding and electrical safety certification. For a professional, courteous service with free estimates & all work guaranteed, please call me

29 Lincoln Way  
Harlington  
Beds  
LU5 6NG

**Fully qualified & insured  
30 years experience**

Telephone:  
01525 875965  
07941 812662

## **ROGER STOREY**

**YOUR LOCAL PAINTER AND DECORATOR**

Friendly and Reliable Service

Many Years Experience

Please phone: **01525 861253** or **07800 777615**

**Based near Toddington, Bedfordshire.**

**We rescue, rehabilitate & re-home stray & abandoned cats.**

**We have lots of beautiful cats waiting for loving homes.**

**Ring the shelter on 01525 875993**

**or Sue on 01582 650167 to arrange a visit.**



**Registered Charity No. 1098984**

**Visit our website @[www.straycatrescue.org.uk](http://www.straycatrescue.org.uk)**



# A L & G ABBOTT

F u n e r a l   D i r e c t o r s

~ Established 1832 ~

WITH YOU WHEN IT MATTERS MOST

An independent family business continuing to  
provide a caring & professional service to Bedford,  
Kempston  
& the surrounding villages.

- 24 Hour Personal Service
- Pre-Paid Funeral Plans
- Private Chapels of Rest
- Green Burials
- Home Arrangements
- Civil Services Available



**T 01234 843222**

**[www.abbott-funerals.co.uk](http://www.abbott-funerals.co.uk)    [support@abbott-funerals.co.uk](mailto:support@abbott-funerals.co.uk)**

**150 BEDFORD ROAD, KEMPSTON, BEDFORDSHIRE, MK42 8BH**

# AIMS

Tim Kemp BA FCA  
Top Barn Rectory Road  
Steppingly MK45 5AT

TEL/FAX : 01525 717141  
MOBILE : 07900 823 012  
[www.aims.co.uk](http://www.aims.co.uk)  
e-mail: [timk@aims.co.uk](mailto:timk@aims.co.uk)

- ♦ **Professional** service providing for all your accounting and tax needs
- ♦ **Practical** advice based on 20 years experience in **running** businesses
- ♦ **Personal** approach with fixed fees relevant to the work **you** need
- ♦ **Friendly, local** accountant supporting the community for over 20 years

Please call for a free, no-obligation initial meeting

**ACCOUNTANTS FOR *business***

## Hills-Howson Financial Services

Financial adviser appointments available in your home or our office

The Old Post Office  
53 High Street  
Claphill  
Beds MK45 4BE

Tel: 01525 861803  
[www.hills-howson.co.uk](http://www.hills-howson.co.uk)  
[hills.howson@btconnect.com](mailto:hills.howson@btconnect.com)

Including:-

Investments

Pensions

Protection

Annuities



**W&H PEACOCK**  
AUCTIONEERS & VALUERS

# Auction Sales and Valuations

Valuation, collection & auction  
service of individual items through  
to complete property clearances.

Call for a free no obligation  
collection quote or email  
[info@peacockauction.co.uk](mailto:info@peacockauction.co.uk)

**SALE ENTRIES NOW INVITED**



Bedford Auction Centre, 26 Newnham Street, Bedford MK40 3JR

**01234 266 366** [peacockauction.co.uk](http://peacockauction.co.uk)

## THE COMPUTER MAN



Got a problem with your computer and don't know what  
to do? Suffering with a virus or spam?

**Don't hesitate! Ring your local computer expert**

**Remote repairs or home visits  
(Day, evening & weekend)**

**Lap top/desk top loan  
(Free pick up & drop off in local area)**

Comprehensive health check from £35 (**Special Offer** £35 - normally £40)  
Refurbished fl at screen available from £15 • Refurbished base units available from £99



Contact Stephen Amos  
**07976 718567**  
[the.computerman@ntlworld.com](mailto:the.computerman@ntlworld.com)





## **rincon tuition - Spanish & Maths**

**Expand your knowledge. Boost your confidence**

**01525 860743**

**Exam techniques and preparation. Revision and practice papers: SATs and GCSE**

**Spanish** for business or pleasure, all levels. GCSE & A-levels

Skills development: conversation, reading and writing

**Maths:** Boost your confidence and abilities

KS1, KS2, KS3, SATs and GCSE practice papers

**DBS** checked and references - Reasonable rates

**01525 860743 - 07952 667814 [rincontuition@aol.com](mailto:rincontuition@aol.com)**



## **LIZZIE BROWN PET CARE & HORSE GROOM SERVICES**

**DOG WALKING  
PET POP-IN & SITTING  
HOUSE SITTING  
FREELANCE GROOM\***

(\*BTEC Equine Management)



**Lizzie Brown 07500 989 700 / 01525 862459**

*Reliable*

*Friendly*

*Local service*

**Short notice available (no contract commitments)**

*Insured*

*Quality references available*

*CRB checked\**

\*(Disclosure & Barring Service)



Baths, Toilets &  
Showers  
Sinks and Taps  
Guttering  
Leaks and Burst Pipes  
Drainage  
Handyman jobs also



beta plumbing

Silsoe based  
No call out fee – free estimates  
Fully insured and guaranteed  
No job too small  
**07720 723653 01525 864859**  
info@betaplumbing.co.uk  
www.betaplumbing.co.uk

## Foot Health Practitioner

Corns, Hard Skin, Verruca, Fungal Nail Infection,  
In-growing Toe Nails, Diabetic Foot Care, Athlete's Foot,  
Pedicure, General Nail Cutting etc.

***In the comfort of your home or at my clinic***

**Ann Gibbons** MCFHP. MBAFHP.

Competitive Rates

**Tel: 01462 813252 Mob: 07872 315763**

**Web: [www.shamrockclinic.co.uk](http://www.shamrockclinic.co.uk)**

For opening hours and other details please refer to my website



## GARDEN DOCTOR

**Rob McLeod**  
Pruning Specialist

**Professional, Local, Experienced**

- \* All tree and hedge work undertaken
- \* High standard of work
- \* Rubbish cleared from site
- \* Free Quotations
- \* Local, reliable service you can trust



**Tel: 07763 239340 or 01525 861568**  
**email: [garden.doctor@btinternet.com](mailto:garden.doctor@btinternet.com)**

Tree Surgery & Removal  
Shrubs & Fruit Trees  
Pruning & Spraying  
Fully certificated and  
insured

Call the Garden Doctor and bring Good Health to your Garden



## We'll get you up and running!

We offer the very best physiotherapy care from a friendly approachable team of nine highly trained Chartered Physiotherapists all members of the Health Professionals Council

### Expert treatment including:

Neck/Back/Hand and Tennis Elbow Pain  
Headaches/Migraine/Sciatica  
Incontinence/Pelvic/SIJ/SPD/Pregnancy Back Pain  
Sprains/Strains/Torn Ligaments  
Whiplash/RSI/Osteoporosis/Sports Injuries

### Specialist Physiotherapists:

Neurological, Paediatric, Vertigo and Dizziness

### We also offer complementary treatments:

Acupuncture, Reflexology, Massage, Indian Head Massage,  
Chinese Herbalist, Lymphatic Drainage and Pumps



Tel: 01525 720882 [www.chartered-physiotherapy.co.uk](http://www.chartered-physiotherapy.co.uk) Email: [amphillphysio@btconnect.com](mailto:amphillphysio@btconnect.com)

7 Station Square, Flitwick, MK45 1DP

## E.T. Accountancy Services

Experienced Chartered Accountant and Chartered Tax Adviser based in Clophill providing a full range of accountancy and taxation services to businesses and private individuals.

To arrange a free initial consultation please telephone me on  
01525 590465 or email [emma@et-accountancy.co.uk](mailto:emma@et-accountancy.co.uk)

*Chartered Accountant and Chartered Tax Adviser*

Emma Thoulass FCA CTA [www.et-accountancy.co.uk](http://www.et-accountancy.co.uk) 01525 590465



## Chapman & Kirby Heating

Gas, Plumbing & Heating Installations

Gas Safe Registered

Boiler Servicing & Maintenance



**Call us now**

Tel: 01525 861255 Mob: 07831 132308

Email: [info@chapmanandkirbyheating.co.uk](mailto:info@chapmanandkirbyheating.co.uk)

1C, Old Silsoe Road, Clophill, Beds., MK45 4AR



# NEVILLE

FUNERAL SERVICE

Established 1875

## Reassurance when you need it most

Serving the people of Bedfordshire since 1875



### Neville Funeral Service

inc. George Squire & Sons since 1976

24 Clifton Road

Shefford SG17 5AE

t: 01462 813258

e: [shefford@nevillefuneralservice.com](mailto:shefford@nevillefuneralservice.com)



### Neville Funeral Service

The Old Church Flitwick Road

Amptill MK45 2NT

t: 01525 406132

e: [amptill@nevillefuneralservice.com](mailto:amptill@nevillefuneralservice.com)



[www.nevillefuneralservice.com](http://www.nevillefuneralservice.com)

## The UK's No.1 Lawn Care Company



- Scarification
- Aeration
- Lawn Fertilising
- Weed Control
- Moss Control
- Water Conserver
- Pest and Disease Management



GreenThumb has a variety of treatment programmes to suit your pocket that include our traditional 'pay-as-you-go' service and our new, pay monthly, Direct Debit programmes, where you can save up to 25% annually.

Our treatments start from £5 per month, that's cheaper than D-I-Y and without the hassle!

Call your local branch today for a FREE lawn analysis and no obligation quote.

**0800 0111 222**

**GreenThumb**  
LAWN TREATMENT SERVICE



Find us online at: [www.greenthumb.co.uk](http://www.greenthumb.co.uk)



*Bathroom  
Vogue*

EST.  
1989

- Suppliers of traditional and modern equipment
- Working whirlpool & spa baths, power & steam shower systems on display
- Over 40 settings on display
- Complete installation service if required
- Personal friendly service from a family run business
- Wall and floor tiles
- Accessories
- Mirrors
- Bathroom furniture
- Heated towel rails
- Saunas
- Bathroom cabinets

**SHEFFORD 01462 627002**

[www.bathroomvogue.com](http://www.bathroomvogue.com)

Unit 4A, Shefford Industrial Park, St Francis Way, Shefford SG17 5DZ

Woburn  
Country Foods

A Mark of Quality

## WOBURN COUNTRY FOODS

Online - Catering - Retail Butcher

High Quality Local Meat

- 21 Day Matured Beef -
- Farm Assured Chicken -
- Bedfordshire Lamb -
- Bedfordshire Pork -

The Farm Shop, West End Farm  
Haynes West End, Bedfordshire  
MK45 3RA

Order Online & Collect In Store

[www.woburncountryfoods.com](http://www.woburncountryfoods.com)

## LOCAL ALLOY WHEEL REFURBISHMENT

  
**mintalloys**  
complete alloy wheel refurbishment

**Tel:**  
**01525**  
**860069**

**Alloy Wheel Repairs**

**Diamond Cut Alloy Wheels Repaired On Site**

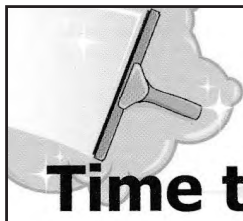
**Powder Coat Primers & Lacquers**

**Fast Turnaround Alloy Wheel Welding**

**Tyres At Competitive Prices**

**NEW for 2015 - 4 Wheel Alignment Service**

**[www.mintalloys.co.uk](http://www.mintalloys.co.uk)**



## Time to Shine

Peter Hendry  
**Traditional  
Window Cleaner**

**07590599381**

phendry8@hotmail.co.uk



## Compu-Doc

PC / laptop crisis ?

01525-402227

Call the Doc for -

Hardware & software

Diagnosis & treatment

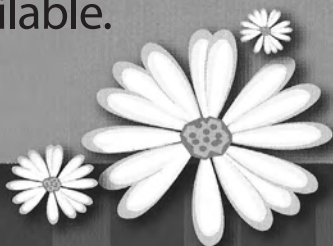
john.stafford@compu-doc.co.uk

## Daisy Cooper

Spring cleans, one off cleans and  
moving home cleans all available.

Daisycooper22@hotmail.co.uk

Please call 07913 332914



Keeping your home as fresh as a Daisy

*Nature is our theme.....*

**Boarding Dogs & Cats  
Day Boarding - Dogs  
'Nature' Food Shop**

*plus*

**On site Grooming - Dogs  
Off site Walking - Dogs**

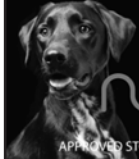


**Conifer**  
Kennels & Cattery

**01525  
860339**

**www.coniferkennels.co.uk**

find us on  
**facebook**



**nutriment**  
ENHANCED raw diet formula

natures:menu  
REAL FOOD PETS LOVE

**frozys**  
frozen raw food

**Green  
Pantry**  
the better health food for you



**ARDEN GRANGE**  
your food, your compromise

APPROVED STOCKIST: Conifer Kennels & Cattery, The Causeway, Clophill, Beds. MK45 4BA



## Wrest Park Day Nursery, Silsoe

Come and visit our beautiful nursery and pre-school based within the grounds of Wrest Park. We offer care for 0-5 year olds 8am to 6pm Monday to Friday for 51 weeks of the year.



We were Rated 'Good' by Ofsted in May 2014 and they commented that 'Staff are enthusiastic, model good social behaviour to children and offer frequent praise' (Ofsted 2014).

We offer all day sessions, am or pm sessions or a 9-3 'school day' session. We accept childcare vouchers and 2,3 and 4 year old funding.

Please call us on 01525 861743 or [info@wrestparkdaynursery.co.uk](mailto:info@wrestparkdaynursery.co.uk)  
[www.wrestparkdaynursery.co.uk](http://www.wrestparkdaynursery.co.uk)



# BURGLAR ALARMS

*New Alarms Fitted or Upgrade Existing Alarms*

## BURGLAR ALARMS

We fit New Alarms - Wired or Wireless Systems  
\*We can service and maintain your existing alarm\*

## CCTV

We fit high quality systems to maximise your security.  
Access your CCTV via the internet or mobile.

## DOOR ENTRY

We fit a range of quality video and audio intercoms  
to suit your needs.

*We are a family run business with over 35 years  
experience in home security and crime prevention.*



[www.maximumsecuritysystems.co.uk](http://www.maximumsecuritysystems.co.uk)

Contact:

**01582 864138 / 07746 111520**

*For a free quote and consultation*

# Root 'n Branch

Your Local Friendly & Reliable Gardener

All aspects of Garden Maintenance undertaken  
• PRUNING • MOWING • WEEDING • PLANTING • HEDGING

Southfields, Shefford  
email: whooley@hotmail.co.uk

**Tel: 07771 537385**

Public Liability  
Insured

## ADAM IN YOUR GARDEN

**TREE SURGERY, HEDGE TRIMMING,  
TURFING, FENCE MAINTENANCE,  
DECKING, PATIO CLEANING**



Qualified, Fully Insured, Competitive Rates  
Free Estimates

**TEL: 01582 518954 MOB: 07828 490360**

Web Site: [www.adaminyourgarden.co.uk](http://www.adaminyourgarden.co.uk)

## ANDREW BAKER WINDOWS

9 SHEFFORD ROAD  
CLOPHILL BEDS  
MK45 4BT

SPECIALISING IN UPVC WINDOWS,  
DOORS, CONSERVATORIES,  
FASCIA, SOFFITS, GUTTERS AND  
CLADDING. ALSO AVAILABLE FOR CARPENTRY  
WORK. NO JOB TOO SMALL OR LARGE.

20 Years experience.  
Free local quotes.

**FENSA**

Fensa Registered  
FIVE YEAR GUARANTEE

Contact Andrew: **01525862804 / 07825017855**

Email: [abakerwindows@gmail.com](mailto:abakerwindows@gmail.com)



# HIGH QUALITY CARPET, UPHOLSTERY, RUG AND LEATHER SUITE CLEANING

Ring Steve

(Barton) 01582 882620

(Mobile) 07769 042523

Email: [bedscarpetcleaners@gmail.com](mailto:bedscarpetcleaners@gmail.com)

[www.bedscarpetcleaners.co.uk](http://www.bedscarpetcleaners.co.uk)



## McCaffrey

Your central resource for residential  
build, refurbishment and maintenance



General Building Works  
Extensions  
Internal Refurbishment/Alterations  
Garage Conversions  
Loft Conversions

Brickwork  
Carpentry  
Painting & Decorating  
Purpose made Joinery  
Bi - Folding Door Applications

Plumbing and Heating  
Electrical installations  
UPVC/Timber Windows  
UPVC Conservatories

T. 01525 861041  
E. [info@mccaffreybuild.co.uk](mailto:info@mccaffreybuild.co.uk)  
W. [www.mccaffreybuild.co.uk](http://www.mccaffreybuild.co.uk)



WEC, BUILDING 52, WREST PARK,  
SILSOE, BEDFORDSHIRE, MK45 4HS

COMPANY NUMBER: 7240869

McCAFFREY BUILDING CONTRACTORS LTD



# OSTEOPATHY

**Deborah Beare** BSc (Hons) Ost.  
Registered Osteopath

**The Clophill Centre for  
Complementary Therapy**  
Clophill Fruit Farm,  
Shefford Road  
Clophill

- Cranial & Structural Osteopathy
- Neck & Low Back Pain
- Muscle Tension
- Sports Injuries
- Arthritic aches & pains
- Headaches

To book appointments call: **07969 921112**

## **Washing Machines Dishwashers Dryers Electric Ovens Repairs Servicing Sales**



A local family business offering  
a quality service at a competitive price  
Est. 1981

**Tel: CLOPHILL 860148**  
**or Tim Downing direct on 07969 545 276**

A member of the White Goods Trade Association  
Fully Insured

# MB

## ACCOUNTING SERVICES

accounting solutions for the  
***Self-Employed*** and ***Small Business***  
including  
**HMRC tax returns • Accounts • Bookkeeping**

For a totally confidential service at **very competitive rates** contact  
Richard Fairholm T: 01525 861087 M: 07714189994 E: [mbaccounts@btinternet.com](mailto:mbaccounts@btinternet.com)

## Hire Clophill Village Hall



**Wedding Receptions  
Birthdays & Special Occasions  
Dances and Discos  
Club & Community Meetings & Activities**

Phone: 07821 643 936

Mail: [Clophill.villagehall@gmail.com](mailto:Clophill.villagehall@gmail.com) Web: [www.clophillvillagehall.co.uk](http://www.clophillvillagehall.co.uk)



### ALL CARPENTRY & BUILDING SERVICES PROVIDED

Double Glazing • Windows & Doors • Granite Work Tops  
Kitchens & Bathrooms • Wood & Laminate Flooring • Loft & Garage Conversions  
*Mini Digger & Driver For Hire*

Call James 7 days a week on

**01462 231734    07595 752466**

[jamesbonfieldcarpentry@yahoo.co.uk](mailto:jamesbonfieldcarpentry@yahoo.co.uk)  
Shefford, Bedfordshire



USING PARABEN & SULPHATE FREE, 100% VEGAN, CRUELTY FREE PRODUCTS

## A Cut Above Hairdressing

**by Rachel**

**In the comfort of your own home**  
cutting & styling specialist

call or text : 07896 009382  
facebook: [acutaboverachel](https://www.facebook.com/acutaboverachel)

Salon experienced / Fully insured / Fully qualified to Level 3 Standard

# Advertisers index

## Architectural Services

Daniel Design & Build 20  
S&S Coates Surveying & Design 24

## Auctioneers & Valuers

W&H Peacock 31

## Bathroom Services

Bathroom Vogue 36

## Builders & Carpenters

James Bonfield Carpentry & Construction 43  
Dave Carpenter Building Services 21  
McCaffrey Build 41  
Peter Sharpe Building Services 18  
Stuart Benson Building Projects IFC

## Carpet Services

Carpet & Upholstery Cleaning 41

## Car Services/Repairs

A&F Motors Ltd IFC  
Mint Alloys 37  
TC Coomber Car Services BC

## Chimney Sweep

Poppins Chimney Sweep IBC

## Cleaning Services

Daisy Cooper 38  
Ovenclean 21  
Time to Shine – Window Cleaner 38

## Computer Services

Compu-Doc 38  
The Computer Man 31

## Electrical Services

Stuart Drew Electrical Services 28

## Financial Services

AIMS Accountants 30  
ET Accountancy Services 34  
Hills-Howson Financial Services 30  
MB Accounting Services 42  
Savage Accountants 23  
SJ Tax & Accounting Services 23

## Food Suppliers

Woburn Country Foods 37

## Funeral Services

AL&G Abbott, Funeral Directors 29  
Neville Funeral Service 35

## Garden Services

Adam in your Garden 40  
Garden Doctor 33  
Green Thumb Lawn Treatment 36  
Root 'n Branch 40

## Health & Beauty

A Cut Above Hairdressing 43  
Amphill & Flitwick Physiotherapy 34  
Deborah Pedley Osteopathy 42  
Linda Allsop Physiotherapy 23  
Mindfulness Movement & Meditation 22  
Mobile Hairdresser 25  
Molly Coddle 25  
Shamrock Clinic - Foot Health 33  
The Tanning Salon BC

## Home Improvements

Christopher The Painter 18  
Roger Storey - Painter & Decorator 28

## Medical Training Services

EMT Academy 20

## Music and Entertainment

Greensands Community Choir 24

## Nursery Schools

Clophill PreSchool 26  
Clophill St Mary's C of E 26  
Lower School and Nursery 22  
Clophill Toddler Group 22  
Wrest Park Day Nursery - Silsoe 39

## Pet Services

Bowbelles Grooming Room 19  
Conifer Kennels & Cattery 38  
Lizzie Brown Pet Care 32  
Mayfield Dog Lodge 22  
Personal Dog Walker 23  
Stray Cat Rescue 28  
The Bluecat Luxury Cattery 25

## Plumbing & Drainage Services

Beta Plumbing 33  
Chapman & Kirby Heating 34

## Post Offices

Mace Post Office & Stores 27

## Print Services

Amphill Print Centre IFC

## Public Houses

The Stone Jug 19

## Removals & Storage

Stephens 28

## Repair Services

Tim Downing Repair Services 42

## Security Services

Maximum Security Systems 39

## Take-aways

The Happy Plance 27

## Tuition Services

Rincon Tuition (Spanish & Maths) 32

## Village Hall

Clophill Village Hall 43

## Windows/Replacement

Andrew Baker Windows 40  
AW Windows IBC  
Misty Double Glazing 25

*IFC = Inside Front Cover*

*IBC = Inside Back Cover*

*BC = Back Cover*

# Ads from as little as £50 per year

For further information about advertising in Spotlight,  
please contact our Advertising Manager at [ads@clophillspotlight.co.uk](mailto:ads@clophillspotlight.co.uk)

# *The Tanning Station & Pebbles Beauty*

- Sunbeds
- Massage
- Eyelash Extensions
- Bio Sculpture
- Pedicure
- Spray Tans
- Footcare Specialist
- LVL
- Facials
- HD Brows
- LCN Nail Extensions
- Manicure
- Hot Stone massage
- Waxing
- Jessica GELeration
- Threading



2 Steppingley Road, Flitwick, Bedfordshire MK45 1AJ  
**01525 720 095** [www.tanningstation.co.uk](http://www.tanningstation.co.uk)



## Opening Times

Monday - Tuesday	09.00 - 19.00
Wednesday - Thursday	09.00 - 21.00
Friday	09.00 - 19.00
Saturday	10.00 - 16.00
Sundays & Bank Holidays	CLOSED

# **T.C. COOMBER**



**MOT'S CLASS 4/7  
SERVICING & REPAIRS  
CAR & COMMERCIAL  
TYRES & EXHAUSTS  
AIR CONDITIONING  
DIAGNOSTIC CODE READING**

**AMPTHILL**  
**01525 406330**

**Collection  
& Delivery**  
SERVICE AVAILABLE  
**Please ask**

**UNIT F, AMPTHILL INDUSTRIAL ESTATE, STATION RD, AMPTHILL, MK45 2QY**