

Vol 45 | No.8

FREE

# CLOPHILL SPOTLIGHT

OCTOBER 2022

**LOVE YOUR  
LOCAL NEWS**

Front cover photographer: Laura Woollard



## A word from the Editor...

Welcome to the October issue of Spotlight

*Dear Reader,*

The team at Spotlight grows from strength to strength. We have a new role in the team from this month "Front Cover Photographer" and a new volunteer. A very warm welcome to Laura Woollard who responded to our advert last month. Laura is a very keen and creative photographer and will be taking pictures in and around the village for the magazine. From now the front cover will represent our beautiful village and surrounds as the seasons change. I am very excited to have Laura as part of the team, thank you Laura for volunteering.

***Best wishes,***

***Elaine***



## The magazine staff

EDITOR	Elaine Jones	07918 975823
	editorial@clophillspotlight.co.uk	
ADVERTISING MANAGER	Nigel and Angela Barker	01525 868685
	ads@clophillspotlight.co.uk	
DESIGN MANAGER	Colin Watt	
DISTRIBUTION MANAGER	Toni Elston	861813
	Phyllis Edwards, Paul Leckie	
TREASURER	Jon Bates	07725 068828
FRONT COVER PHOTOGRAPHER	Laura Woollard	

***Deadline for articles is 20th of the month***

You can also read Spotlight online

***[www.clophillspotlight.co.uk](http://www.clophillspotlight.co.uk)***

# Come into the Garden

*With Kate Gardner*



As we move into October, days are becoming shorter and there is a coolness in the air, but that said, our gardens can still give us a wonderful and colourful finale before winter descends. Many deciduous trees, shrubs and climbers put on a beautiful show before their leaves fall, and there are hips, berries and fruits to enjoy, along with plenty of flowers to keep the colour going right up until the frosts hit. If you choose the right plants, autumn can be a spectacular time in the garden.

**Acers** put on a spectacular show as their leaves turn to deep magenta, purple or golden yellow. They can either be planted into the borders or make excellent container plants, for the more shaded areas of the garden. **Dahlias** will continue to flower until the first frosts, particularly if you regularly deadhead and feed them. The single petal varieties are the best for insects as they provide a good source of late season food.

**Cornus** (dogwoods) put on a spectacular show before their leaves fall to reveal colourful winter stems, from the deepest black, through red to the palest green and yellow. Now is also a good time to take hardwood cuttings to make new plants for free. Cut a stem about 30cms and plunge the bottom half into a pot of compost. Leave it somewhere sheltered over the winter to put on some new roots and you will have new plants for free.

Ornamental grasses are at their best in autumn, and combine well with all kinds of perennials and shrubs. **Miscanthus sinensis** cultivars form large, dense clumps and showcase bright, feathery, narrow plumes that look superb in low autumn light. Standing tall (up to two metres) and upright through the whole of winter is an added bonus. If you prefer something smaller, try **pennisetum** or fountain grass, with its distinctive bottle-brush flower. These clump-forming grasses do best in full sun and look good throughout autumn, especially amongst herbaceous perennials such as **Japanese anemones** and **sedums**, which are flowering at the same time.

Now is the perfect time for planting spring bulbs, so how about planting drifts of spring bulbs informally in your lawn, including crocuses, dwarf narcissi and snake's-head fritillaries. It's also a good time to be planting up containers with plants to add winter colour. Heathers, cyclamen, winter pansies and skimmia will provide colour and interest throughout the dark winter months. Our local plant nurseries and garden centres have an amazing selection of plants and will be able to provide advice on what will work best in your garden to give winter long colour and interest.

If you have been enjoying the tropical feel from Cannas, now is the time to lift them to avoid frost damage, dry off the tubers and store in cool dark conditions until spring. It's also a good time to lift and pot up any tender perennials, such as chocolate cosmos, pelargoniums and fuchsias, to protect them over the winter.

If lifting and storing is not an option, then leave in the ground where they have been grown, cut back the top growth to 10cm and protect the roots and basal buds with a thick layer of well-rotted manure or bark chippings.

You still have time to transplant any deciduous shrubs that are in the wrong place, as well as plant new evergreen shrubs and trees. The soil is still warm so that allows a good strong rootball to develop before the cold winter weather kicks in. Just make sure to water well in and then add a good level of mulch to help conserve water and protect the plants while they establish.

**Happy Gardening.**

---

## ST. MARY'S CHURCH NEWS

The last weeks of August were uneventful at St. Mary's, but everything kicked into action in September, starting with a Family Praise Service at which Blake Martin was welcomed by the congregation after his Baptism and there was a fun play depicting the Old Testament story of Gideon.



Then it seemed as if the world had turned upside down, when the death of the Queen was announced. The Church of England had prepared for this event and at St. Mary's we put the plans into effect. After Accession Day the Union Flag flew at half-mast for the official period of mourning and the bell was tolled 96 times every 10 seconds to mark the years of her life. A Book of Condolence was placed in the church and for the ensuing 2 Sundays there were special prayers and sermons, after which we sang lustily "God Save the King".

Meanwhile a small group went into the school to resume Open the Book, with the story of the wise and foolish housebuilders, which was greatly enjoyed both by the children and the actors! This will be a fortnightly event. The planned Bible Study group on the 19<sup>th</sup> was of course postponed for 2 weeks. Please let us know if you would like to come to that.

By the time you read this we will have held our Harvest Festival Service on Oct. 2<sup>nd</sup> at which we hope to have a contribution by our new Junior Choir. There will also have been a Harvest Lunch on the following Wednesday, the first since before the Pandemic.

Then on Thursday October 13<sup>th</sup> we will be holding our first "winter warmer" lunch of soup and a roll, which we hope will be a weekly event to help people through the next months. This will be free, although small donations to cover the cost would be gratefully received. TLC (the Thursday Leisure Club) will follow and anyone who wishes to stay on will be most welcome.

**Correction** Last month I wrote that there would be prayer candles for people to light. Sadly, we have found that our insurers insist that for this someone needs to be on duty the whole time, which is of course impossible for us.





St Mary's Church. Clophill

# **22nd Annual Quiz Night**

**Friday 18th November**

**7.15 for 7.30pm**

**at St Mary's Church**

£5 – Please bring your own drinks, glasses and nibbles. Tea and coffee available.

Teams should consist of up to 6 adults.

Children are welcome.

For more information please  
contact: -

Julie Benson, 72 High Street,  
Clophill 01525 860497  
by 16th Nov. at the latest.





## St Mary's Church, Clophill



If you are feeling cold.

If you are feeling you want some company.

If you would enjoy a bowl of homemade soup and some bread every Thursday lunchtime in warm surroundings, you would be very welcome to come to St Mary's Church where there will be a warm welcome and hospitality.

We are offering a Winter Warmer lunchtime

12noon - 2 pm

Every Thursday starting 13th October.

A small donation would be appreciated but not essential.

Everyone will be welcome



# Clophill Methodist Church News

Well, what a busy month we have had. As many of you will have seen, we have had scaffolding up at the front of the church in order to carry out essential maintenance to the sill of the large front window, and painting the frame.

For over 30 years, there has been Perspex protecting the glass, and on removing it, it was decided to replace it now, once the other repairs were complete, as we had the scaffolding on site.



The replacement has transformed the window both inside and out, brightening the church. Thank you to those church members, who gave up so much of their time to do this work. It looks amazing.

The second weekend of the month, we were open for the sponsored Bike and Hike raising funds for the Historic Churches Trust, alongside our Coffee and Croissants, and Messy Church Activities. A Place for Prayer and Reflection was available, where a candle could be lit and a prayer said, in memory of Her Majesty the Queen. We have also been celebrating our Harvest, with our Minister holding a

special service for the Village pre-school with lovely food donations including home grown potatoes, and Granny's home -made jam. A food bank collection has been held for The Need Project a Christian based Charity in Stotfold. A Big thank you to all those from Church, Village and surrounding areas who very generously dropped donations in for The Need Project Food Bank. Our Harvest Festival Sunday Service, was a lovely celebration followed by a Community Harvest Lunch the following week. Again, thank you to all who attended and for the hard work that went into this event.

**N. Wood**

---

## Reflections – Clophill in September 1977 Voices from the past

**Continuing our series looking back at previous issues of Spotlight and Clophill Village life... By Julie Benson**

After a bumper July-August magazine, September's issue was somewhat slimmer. However, it still had a plethora of village activities and advertisements for future events.

This wonderful tree on the cover (on page 7) was known as '**the cross tree**' and it stood on the junction of Great Lane, Little Lane and the High Street. I understand that it met its end (or at least its end was hastened), by the many horse-drawn gun carriages which once hurtled down the lane from a military base in Haynes and which, not quite making the sharp turn onto the High Street, bashed into the tree. I could well be wrong – but that is what I have heard.

If you were to look at page one and under '**Editorial comment**', you would read: "The summer months have been very successful for us at 'Outlook' magazine. Firstly, we were able to make a donation of £110 to St. Mary's Church Tower Restoration Fund, and secondly, we received a very generous donation of £20 from an afternoon Barbecue, organised by Mr. Colin Joiner at 'The Flying Horse'. Next month we have organised a 10th anniversary Buffet Dance, dancing to the very popular 'Home Brew', tickets £1.35. Any local organisations, advertisers or readers, wishing to help us to raise our funds can do so, either by providing us with food for the buffet, or with prizes for the evening's raffle." Thanks were given to Mrs Gates who had already offered a rich fruit cake. 'Outlook' often held fundraisers as you will have noticed.



The next title was '**St. Mary's School**', under which was written "with proposed discussions planned for the village's conservation area, Clophillians will be sad, if not distressed to have seen the recent destruction of the old school, which held for them so many happy memories of the past." It continues "The school managers however, ask us to reserve our judgement on the project, until the whole scheme for the new school and its grounds are completed, adequate playing area,

in accordance with government guidelines, part of the grounds as a garden (?). The bell tower from the old school will be erected in such a way as to be a focal point for the area".

Page two tells us that "Children of eight years and over are needed to build up **St. Mary's Church Choir**, which is now affiliated to the Royal School of Church Music." Didn't know that! "Local organists will be playing at St. Mary's Church during the forthcoming Flower Festival".

It looks like the **Darby and Joan Club** have been having a fun time with their 'enjoyable day at Clacton' and then, "Two weeks later on Tuesday 12th July, members enjoyed their annual Garden Party, generously provided for them by Sir Douglas Howard in the attractive grounds of Clophill House". This generosity was replicated this year wasn't it - Jubilee Time. A week later members enjoyed a mystery coach tour round the "delightful Hertfordshire and Buckinghamshire countryside"; a tea at Cainhoe Manor and a couple of other coach tours, finishing at Dunstable Downs and watching the gliders. No wonder they returned home "tired but happy"!

Following pages inform us that the **Flower Club's** meeting had members enjoying "the art of Japanese flower arranging" and then "'Unusual containers and accessories'" and the **Brownies** had a busy time too with the divisional Jubilee get together at Beckerings Park Farm and Brownie Revels at Silsoe, when, due to rain it had to be held in England's Hall.

Mr S. Myers “demonstrated the correct manner to fit a (bicycle) chain” and Frances Wood, Joanne Ellingham, Rachel Craig, Carol Jeffcoate and Tracy Wiles gained their Cyclist badge and Mrs G. Jones was thanked for testing Helen Trudgill, Amanda Parker, Rachel Naylor and Carolyn Jones for their Swimmer badge.

“A tea and coffee evening was held at 2, Great Lane, thanks to Mr & Mrs Tony Naylor for the **Methodist Church** members and friends and “Tim Ilett was delighted to win the dinosaur raffle at the **Cheshire Home Fete**”. The **Toddler Group** (now a year old) restarted and the **Netball Club** took part in a ‘Day of Sport’ in Ampthill. “The names of the Clophill servicemen, who gave their lives for their country in the 1914/18 and 1939/45 world wars, now shine clearly on the village **war memorial**, due to ‘Bob’ Roberts, with a pot of paint and a nifty paint brush.” ‘**Sid’s Scene**’ comments on the death of Elvis, The Status Quo and Dr. Feelgood tours and the arrival of Demis Roussos amongst other musical events and finally, “On behalf of the Parish Council and the many users of **Sand Lane**,” R. Roberts thanked Mr Jack Morgan and Mr Roy Peat for “their assistance in clearing the trees and shrubs, thus allowing the street lamp to illuminate effectively.” Where is Sand Lane – I must admit that I have never heard of it?

## Coffee and Croissants Clophill Methodist



Church  
10am to 12 noon  
Saturday 8th October  
Saturday 12th November  
All Welcome



# **Clophill Methodist** **Church**



**Alternative**

## **Christmas Tree Festival**

**Saturday 10th December 2022**

This year, we are holding another Tree Festival in aid of Church Funds.

**Would you like to Make a Tree and Decorate it,  
or bring a Tree and Make the Decorations?**

It could be provided by a business, an organisation, a family, a group, or an individual.

We will accept trees and decorations of all shapes and sizes, and of different materials. It could be traditional or contemporary design.

In the past, we have had a junk model tree, a tyre tree, a delicate embroidered tree, trees made of flowers, a step ladder tree and a paper chain tree. Use your imagination and get creative!

**If you would like to take part, or would like further information, please contact tel: 860695.**

Thank You

# St Mary's School News

*from Mrs. Bingley our Headteacher*

We have had a great start to our new academic year. All of our new children settled in quickly and everyone slipped into life in their new classes brilliantly!

Over the Summer we found out the wonderful news that we are the FIRST (and currently only) FSA (Forest School Association) RECOGNISED FOREST

SCHOOL PROVIDER IN BEDFORDSHIRE! Our Forest School is incredibly loved by the children, staff and parent volunteers who attend. It provides so many positives for the children from supporting their social and emotional well-being to developing their independence and resilience. It also gives them an important understanding and appreciation of nature.

Our Forest School sessions for this academic year began in earnest during our second week back. Beech and Sycamore groups are both now up and running and if you'd like to find out more about their adventures in Irene's Wood, please take a look at our dedicated Forest School webpage: <https://www.clophillstmarysschool.co.uk/Curriculum/Forest-School/>.

Swimming lessons also began for our Year 4 cohort during the second week back. The children love their sessions at Happy Tiddlers in Barton and we are so grateful that we are able to offer sessions, not only to Year 4, but also Year 2 and 3; with transport subsidised by our wonderful Friends of St. Mary's.

Of course, we had some sad news at the beginning of term with the death of Her Majesty, Queen Elizabeth II. As a school, we ensured the children understood the importance of her reign during our special Remembrance Day and celebration of the Queen's life which we also held in our second week back. We hope you managed to see pictures of their activities on our Facebook page, which ranged from thinking about the Values the Queen modelled, key events from her life and the future of the monarchy and our hopes for King Charles III.

At the time of writing, we are looking forward to holding our first charity day, supporting Jeans for Genes. This campaign raises awareness of the daily challenges faced by those living with a genetic condition and raises money to fund projects that make a difference to the lives of those affected.

We held our Harvest Festival service at church at the end of September. This year our food donations are being sent to the NEED project who provide food packages, other items and support to those experiencing financial hardship within Central Bedfordshire.





## Jake the School Dog

Jake is also enjoying being back at school and he supported National Literacy Day at the beginning of September by working on his letters and his reading in Acorn Class! Jake continues to spend time with our readers within school and those who require wellbeing support.

## Acorn Nursery news

*from Mrs. Hayes our Nursery Manager and Early Years Leader*

We've had a lovely start to the new school year - welcoming a number of new children as well as children returning to us after the summer. All children have settled in brilliantly and it's delightful to see them all come in every morning with happy, smiling faces! As always at the start of the year, we have focused on learning/reviewing our class routine and practices such as tidying up when our special song is played. We discussed our class behavioural expectations together and the children felt that we should: be kind, tidy up together, use quiet voices inside and listen to each other.

At the beginning of September, we listened to and explored the classic story of 'The Smartest Giant in Town', making our own giant by drawing around one of the children and decorating him together. We've discussed being kind to others as the Giant did and also talked about what we wear and practiced how to put on/off our coats, cardigans and shoes ourselves.

In the second week back, we also celebrated the Queen's life and Reign by putting together jigsaws of the Royal family, decorating crowns and thrones with playdough, collaging crowns and drawing pictures that reminded us of The Queen - some of the things children chose to draw were a palace, grass for flowers and crowns. Together with Chestnut Class, we looked at a PowerPoint of The Queen's life history and joined the whole school for a special worship at the end of the day to show our pictures proudly. We are currently looking forward to exploring the story of 'Elmer the Elephant' and discussing similarities and differences.

## Our Value for October is: Co-operation

**In school**, we will learn that co-operation is everyone's responsibility. We will also discuss how co-operation can take courage and willpower to achieve. Through stories we read in our daily Worship (Assemblies) and our Class Worship activities, children will learn that co-operation requires us to recognise the unique role of every individual, whilst keeping a sincere and positive attitude. We also hope to realise that those who co-operate with others will find that others co-operate with them!

**At home**, you could tackle a jigsaw puzzle or task (like sorting out the garden or clearing out the garage) that requires the whole household to co-operate to get the job done! Understanding the importance of and practising taking turns in a game also helps children to understand that everyone has a role to play in order to make the game work and that patience and waiting is sometimes required to do this 😊.



# Clophill Preschool News

Hello everyone, what a busy term we are having already. Our setting is evolving yet again: we have changed how our 1:1 staff and special needs support runs and have created a specialist provision within our main setting. Our brilliant SEND team, with the addition of (another) Sarah, now work as a unit in our newly developed outdoor shelter providing opportunities for progress and support through a more structured timetable of activities; while allowing the children the freedom to explore in our wider space with staff on hand to guide them.



We are also redeveloping our nature garden and fruit tree area and hope to bring the chickens out to this space. The children are going to work with Lynne to help plan how they would like the new nature garden to look and everyone will work on it together. We hope to get a fruit cage for the fruit trees and a bigger run for the chooks for when they aren't roaming round preschool's grounds.

We held a coffee morning in the Community Allotment and some kind parents came in and helped to weed it. We planted some winter veg and harvested potatoes that the children counted out into paper bags to take home for their dinner. Jimmy kindly helped us to put the benches together and we now have a place to rest comfortably after a morning of weeding! We have also added a box for gardening gloves and equipment. Please do come up and take a look, you can just rest a while on the benches or have a go at pulling any weeds you find, you are also welcome to pick any herbs you could use for your cookery, we have lots of thyme, mint and sage growing at the moment.

We have had lots of new children settling in, we enjoy meeting our new families and growing our preschool community. The children have been very busy with Sarah doing lots of fun games and activities from her Healthy Movers course, the activities are designed to get gross motor skills working hard to enable the fine motor to progress. Our children are always very active as they are outside all session but when Sarah gets going with her train game or jungle exploring everyone can't help but join in!

The children have been making their own snack each day with the help of the adults, they have picked apples from our tree to cut up and eat and have been counting and mixing to create our own vegan banana loaf and lemon cakes. Our new Adventure Friday group has taken to the sessions like ducks to water. They listened carefully to instructions, walking safely along the paths and were keen to explore the woods. We are looking forward to many more adventures every day at preschool!

# Clophill Parish Council

(Meeting held on 21<sup>st</sup> Septembere 2022)



The September meeting was postponed in respect for the sad passing of The Queen, and rescheduled to the Methodist Church.

We were pleased to Co-opt Dean Elcome unanimously to the council. Dean has been active in the village on a number of matters including raising awareness of proposals to remove the footbridge.

Cllr Rodell read out the CBC response email to the A6 roundabout consultation which can be reviewed in full on the CBC website. This addresses most of the village concerns, but not retention of the footbridge. **CBC will attend the 25<sup>th</sup> October PC meeting to speak and have a public Q&A. CPC resolved to attend the 29<sup>th</sup> November CBC Highway public meeting.**

Standing orders were suspended for public representations.

An appeal was made to any local businesses willing to sponsor the Clophill Christmas Lights Switch On 2022. A modest amount is required to pay the GST Choir and Brass Band. Anyone interested should please contact the [Clerk@clophill-pc.gov.uk](mailto:Clerk@clophill-pc.gov.uk)

**The next Parish Council meeting is on Tuesday 25th October at 19:45 in Clophill Village Hall.**

## Planning Applications

(Items with decision required prior to meeting).

**CB/22/02705/FULL**

**Location:** 16 Goodwood Close

**Proposal:** Loft Extension approved under application CB/21/04794/LDCP. The windows are obscure, but the opening height of windows is 1.55m, instead of 1.7m, addition of a Soil Vent Pipe (retrospective).

**NO COMMENT**

**CB/22/02933/FULL**

**Location:** 2 Mill Lane

**Proposal:** Front extension to existing detached garage.

**SUPPORT**

**CB/22/02938/FULL**

**Location:** 108A High Street

**Proposal:** Single storey rear/side extension with new porch, addition of ground floor window to front elevation, and addition of mural to existing front elevation recessed detail.

**SUPPORT**

**CB/22/02081/FULL**

**Location:** Paradise Farm, The Causeway

**Proposal:** Stationing of 2 additional mobile homes (to the existing 2 tourers and 1 caravan) for residential purposes, a larger dayroom and area of hardstand ancillary to that use.

**OBJECT**

**CB/22/02204/FULL**

**Location:** 2 Pear Tree Close

**Proposal:** Garage loft conversion with new dormer and change the roof pitch to 45-degree. Revised Floor Plans and Elevations received.

**OBJECT**

**CB/TCA/22/00423**

**Location:** 1 Little Lane

**Proposal:** Works to trees within a Conservation Area.

**NO COMMENT**

**CB/TCA/22/00454**

**Location:** 7-9 April Cottage, The Green

**Proposal:** Works to trees within a Conservation Area.

**NO COMMENT**

**(Decisions made at meeting):**

**CB/22/02861/FULL**

**Location:** Land to the rear of Waterworks House, The Old Waterworks, The Pump House, 12 and 15 Shefford Road and 11 to 21 Jacques Lane

**Proposal:** Demolition of existing buildings and structures and the erection of 38 dwellings and associated works.

**OBJECT**

**CB/22/03374/FULL**

**Location:** Glen Farm, Great Lane

**Proposal:** Proposed new pitched roof dormer to garden elevation, addition of glazed lantern to existing flat roof and new outward opening gates to driveway.

**SUPPORT**

**Planning Appeal:** Land South of Top Farm, Shefford Road, Clophill

Appeal reference: **APP/P0240/W/21/3279803** -

Application reference: **CB/20/03077/FULL**

**Description:** Permission is sought for consent for 1 residential static caravan and 1 touring caravan, parking for 2 vehicles, water treatment plant and additional hardstanding and infrastructure.

**For Information only**

A507 Cainhoe Quarry noise and smells - **Defer to next meeting and write to Thomas Bros**

A6 Roundabout - **CPC to have a planning subcommittee before the next meeting**

**CBC Enforcement number: CB/ENC/18/0303**

**Address:** Paradise Farm, The Causeway

**Alleged breach:** Unauthorised works to land east of planning permission CB/15/02482/  
**FULL re: land excavation/hard core.**

**CPC Resolved to support CBC**

## Clophill's own Correspondent to HM the Queen and the Royal Family.



Her Majesty Queen Elizabeth had always been informed of special events in Clophill. For many years Cora Sheppard has corresponded with Buckingham Palace and Her Majesty, the late Queen. She has regularly written letters and sent cards and photographs to inform Her Majesty of news from Clophill. Each time she has received a reply, usually written by one of the Ladies-in-Waiting with kind messages from the Queen.

Cora who lives on the High Street is a great fundraiser for charities and St Mary's Church and frequently organises collections and bric-a-brac sales at her gate. She has supported Keech Hospice for many years and has raised £14,720 for this special cause and more to other charities including MS, Papworth Hospital and Alzheimer's. Each time Cora informed the Queen with a chatty letter, as well as giving Her family news almost as if she was telling her own mother! They were informal letters and Cora knows that the Queen appreciated this.



Cora sent letters and photographs when an event to commemorate a special Royal occasion was held in the village, including the Flower festival staged by Clophill and District Flower Club in 2016 to celebrate '90 Glorious Years' and the Diamond Jubilee Celebration and Afternoon Tea at Clophill House on 4th June 2022. In May 2022 a letter said, "The Queen was interested to hear that you have been involved with your church in collecting items to send to Ukraine and Poland and Her Majesty was glad to see the photographs you enclosed". During the pandemic the letter came from Windsor saying "I am to thank you very much, for your thoughtfulness in writing to The Queen at this time which is greatly appreciated".

The Duke and Duchess of Cambridge, now the Prince and Princess of Wales, have also received friendly letters from Cora. When Prince George and Prince Louis were born it was Cora who suggested the names! I am sure there will be more letters and cards sent to our new King and Queen Consort as Cora will be keen to keep up the lines of communication. All the replies she receives are kept proudly in an album to show that her news has been acknowledged and the Royal Family know what is happening in our village of Clophill.

**Carolyn Cranswick**

## Katherine Concerts now running to the end of December.



Continuing the outstanding classical music series set in the beautiful acoustic of Ampthill's Methodist Church.

Katherine Concert's Thirds Series events in October are:

Friday 7th October - Cindy Zhu, piano.

Friday 14th October - Laura Armstrong, 'cello

Friday 21st October - Zoe Barnett, classical guitar

Friday 28th October - Louise Hoare & Martin Pacey, soprano & piano

The 45-minute recitals at Ampthill Methodist Church begin at 2pm, and are followed by tea and cakes in the upstairs School Room. Tickets (£10) are available via Absolutely ShabbyLass or [www.ticketsource.co.uk/Katherine-Concerts](http://www.ticketsource.co.uk/Katherine-Concerts)

## Village groups

Beverley Court	860920	
Brownies	<a href="mailto:enquiryym.girlguiding.org.uk">enquiryym.girlguiding.org.uk</a>	
Clophill Community Care	Duty Contact	07791 773705
Clophill Heritage Trust	Ali Bradbury	07894 710001
Clophill Preschool	Imogen	07765 887868
	Chris	07936 006381
Clophill St Mary's C of E Lower School & Nursery	Emma Topliff	860206
Clophill Toddler Group	Charlotte Messer	07538 150058
Clophill United Charities	Val Martin	860900
Conservation Group	Brian Adams	862297
Flower Club	Gillian Hill	860539
Friends of the Cheshire Home	Sue Pearson	861110
Funzone After School Club	07903 167493	
Indoor Carpet Bowls	Tony Meredith	860754
Messy Church	Victoria Higgins	07920 568861
	<a href="mailto:victoriajhiggins@hotmail.co.uk">victoriajhiggins@hotmail.co.uk</a>	
Friends of St Mary's (FOSM)	Mary Milne and Jenny Garnham	
	<a href="mailto:fosmclophill@gmail.com">fosmclophill@gmail.com</a>	
Scouts and Cubs	<a href="http://www.scouts.org.uk/get-involved">www.scouts.org.uk/get-involved</a>	
Tea and Chat	Anita Errick	860695
Village Hall Booking Secretary	Marylin Browning	07821 643936

# Clophill's Serving Survivors of WW1

By Sue Pearson

*Continuing our series in celebration of Clophill's brave men who fought in and survived the first world war...*

**Frederick Thomas Spicer** was born 1894 Essendon, Herts, son of Thomas who was son of Hannah and Edward. Frederick and his father were farm labourers which given the lack of social mobility in that era makes his story all the more remarkable. His connection to Clophill is that his grandmother Hannah lived in Little Lane during WW1.

He enlisted, aged 18 in 1912 in the Bedfordshire Regiment. In 1914 alone, he was engaged in the battles of Mons, Le Cateau, the retreat to Paris, the Marne, the Aisne, La Bassee and the First Battle of Ypres. 1915 saw him involved in the Second Battle of Ypres and in the desperate defence of Hill 60 in April and May.

Amphill News reported in 1915 "Acting Sergt. F. Spicer, 1st Bedfords, who has received the Cross of the Order of St. George from the Czar, is the grandson of Mrs. Spicer, of Little Lane, who was delighted on Hearing the news."

He was also awarded the Military Cross in 1916 at the Somme- his citation reading "For conspicuous gallantry in action. He led his men in the attack with great courage and determination, himself killing a number of the enemy. He has on many previous occasions done fine work."

Amphill News again reported in 1916 "Mr. Frederick Spicer, of the Bedfords, before going to France was promoted to Corporal, and soon after was made Sergeant. Last week, he writes to say he had become Sergeant-Major. His aged grandmother (she was 75 at this time!) is delighted at the success of her grandson. Her son-in-law, Sgt.-Major Christian, is at Salonika."

In 1917 he became a Second Lieutenant, his fighting continued at Ypres and during the German Spring Offensive in 1918. He was mentioned in dispatches twice, was wounded twice and twice gassed! He was also awarded the 1914 star with clasp and roses.

He married Violet Reeve in 1918 but continued his military career, serving in Ireland, India and Palestine. In 1936 he went to Egypt where he served as a Company Commander. Major Spicer returned to France in 1939 serving throughout the phoney war until invalided home. Once recovered he served as a Brigade Major in the Bedfordshire & Hertfordshire Regiment but died suddenly in 1941 aged just 47 by which time, he was a Lieutenant Colonel. He is buried in Bury St. Edmunds.

For further details see <http://bedfordregiment.org.uk/4thbn/4thbntnphotos1.html>, or read his war diary which is held in Bedford Records Office.





# Clophill and District Flower Club

## Alan Smith “Autumn Glory” September 2022



‘Autumn Glory’ was the title of the floral demonstration given by Alan Smith at the September meeting of Clophill and District Flower Club. He created six beautiful designs, 5 of which incorporated Autumn colours depicted by Sunflowers, Lilies, Dahlias, Carnations, Gerbera, Wild Clematis, Anthuriums and Teasels to name but a few. The sixth design was a ‘special’ to celebrate our Sapphire Anniversary during the Covid lockdown but which we celebrated earlier this year as 45+1. The Sapphire Blue was created by use of tall blue Gentians, purple Lisianthus and Carnations and blue Hydrangea all displayed in a deep blue earthenware

pot.

Throughout the demonstration, Alan was his usual bubbly self, telling us of his experiences since becoming involved with NAFAS (National Association of Flower Arranging Societies) in the 1970’s, his travels to the USA and to the World Show in Barbados and the many people he has met on his travels and through his keen competitive spirit at National and local shows. Alan has been a favourite and regular demonstrator at our club but this, sadly, was his last visit as he is retiring; we all wish him well.

As with all good demonstrators, Alan passed on lots of tips on design, the use of structure, appropriate setting, driftwood; the use of recession of shorter flowers pushed deep into a design to give depth, placement of focal flowers and the preparing/conditioning of plant and flower material before use. Did you know that Gerberas only like being in shallow water: in deep water they build up bacteria on the stems and die.

Foliage for the designs was provided by Alan and also flower club members, from their gardens: Aspidistra, Fatsia, Bergenia, Ivy and Hosta to name but a few.

As always, the designs were raffle prizes at the end of the evening. The winners choosing the design they wanted, or were able to carry home.

Visitors are always welcome at our meetings. On 3rd November, we have Theresa Rodrigues with her demonstration entitled ‘Gardens by the Bay’ and then for our 1st December Open Evening we have Lee Berrill with his demonstration entitled ‘Made for Xmas’. For further information, visit our website [www.clophillflowerclub.com](http://www.clophillflowerclub.com)



# Parish Registers for October

## 1821

### **Baptisms**

- 07 Alfred Tingay, s of John and Susannah.  
Mary Ann Summerfield, d of Abraham and (?).  
14 Charlotte Lammas, d of Thomas and Lucy (?).  
19 John Frederick Butcher, s of Thomas and Elizabeth.

### **Marriages**

- 01 Joseph Lincoln to Elizabeth Barrit.  
20 James Wiffin to Elizabeth Gudgin.

### **Burials**

- 12 James Burrows.

## 1822

### **Baptisms**

- 02 Sophia (?) man, d of George and Sarah.

### **Marriages**

- 07 George Paine to Maria Walker.

### **Burials**

- 09 Matthew Goodman.

## 1871

### **Baptisms**

- 29 Lincoln, s of George and Eliza.

### **Marriages**

- 28 George Everett, 31 to Catherine Bushby?  
30 Charles White, 23 to Emma Richardson, 21.

### **Burials**

- 17 Charles Christopher Daniels, infant.

## 1872

### **Baptisms**

- 02 Henry Lincoln, s of William and Elizabeth.  
27 Harold John Coburn, s of Isaac and Elizabeth of Maulden.

## 1921

### **Baptisms**

- 02 Audrey Joyce Izzard, father an engineer and fitter.

### **Marriages**

- 01 Alfred Taylor, 28 to Mary Lammas, 23.

### **Burials**

- 25 John Mitchell of Maulden, 82.

## 1922

### **Baptisms**

- 01 Doris Norah Richardson.

### **Marriages**

- 31 Frederick Bottoms, 59 widower to Bertha Eleanor Ashley, 52.

### **Burials**

- 14 Ann Roberts, 81.

## 1971

### **Baptisms**

- 17 Mark Adrian Crowsley of Bedford.  
24 Stephen Edward Baker.

## 1972

### **Baptisms**

- 08 Keith William Donkin.  
15 Sophie Karen Dawson.

### **Burials**

- 02 Ellen Irene Low, 84.  
10 Daisy Maud Everett.

## St. Mary's Registers for September 2022

### **Baptism**

- 11 Finnley Bow Abrahamson.



**Wildlife Trust for  
Beds, Cambs  
& Northants**

# Wildlife walks & talks

**Saturday, 8<sup>th</sup> October, 10.00am-12.00, Stockgrove (LU7 0BA)**

## **Wildlife Walk\* with Bob Hook**

Walk round the fabulous Rammamere Heath with Bob Hook. With history back to the 15<sup>th</sup> century, this woodland, the largest area of broadleaf in Bedfordshire, is as diverse as it is rich. Meet in the car park at the Stockgrove entrance, Brickhill Road, Heath & Reach at 10:00. There is a car parking charge (1hr-3hr £4.00) for details see: [www.greensandtrust.org/parking-at-rushmere](http://www.greensandtrust.org/parking-at-rushmere).

\*£3 per adult

**Sunday, 30<sup>th</sup> October, 9.45am-3.00pm, Houghton Conquest (TL044412)**

## **Seed Collection with Colin Carpenter**

Join Colin and other volunteers to collect seed from native trees and hedgerow plants. These will be planted and nurtured for distributing to various organisations to create and re-populate woodlands throughout the UK. A vital conservation activity and enjoyable too!

Park and meet in Rectory Lane, Houghton Conquest at 9.45am. Please have appropriate footwear and clothing for this activity, and a packed lunch if you are staying until 3.00pm. Free but donations welcome

### **Open to all.**

To reserve a place or for further information please email Ann at [flitvale.info@gmail.com](mailto:flitvale.info@gmail.com) or ring or text on 07580 178889.

The Wildlife Trust for Bedfordshire, Cambridgeshire, and Northamptonshire

Registered charity number: 1000412. [www.wildlifebcn.org](http://www.wildlifebcn.org)

**Flit Vale Local Group.** [www.flitvale.org.uk](http://www.flitvale.org.uk)

## **Clophill Heritage Trust**

Happy autumn everyone! We're thrilled to bring back the pumpkin

festival this year on the 29<sup>th</sup> October 11am-4pm. Remember to reserve your pre-hulled pumpkin on our website, and pop up rain or shine for fun, crafts, loads of food and drinks and more! Everyone and their dogs are welcome, and of course costumes are encouraged (yes, even on the dogs).

**Izzy**

**Facilities & Visitor Experience Manager**

Clophill Eco Lodges

07935 911207, [IsabelS@clophillecolodges.co.uk](mailto:IsabelS@clophillecolodges.co.uk)





# UPDATE



# CLOPHILL LAKES



The  
Greensand  
Trust

A new nature reserve for benefit of  
wildlife and local communities

We have launched our appeal to support our conservation work and the supporting facilities that the site will need to ensure its future sustainability and protection.

Greensand Trust Patron and former Chairman Peter Smith MBE has offered to match any donations made to the Clophill Lakes appeal before the end of December via The Peter Smith Charitable Trust.

To find out further information or donate to our appeal please visit our website: [www.greensandtrust.org/appeal/clophill-lakes](http://www.greensandtrust.org/appeal/clophill-lakes)

- Our target is to open for Public Access in 2023.
- We are awaiting Central Bedfordshire Council's approval to begin establishment works in line with the approved Nature Reserve Masterplan and Management Plan.
- We have more tree planting events coming this autumn.
- Come and visit our stand at the Clophill Pumpkin Festival on 29th October.
- Site checks, surveying and monitoring work is ongoing and will continue before and after public access is enabled to ensure any impacts are minimised and/or mitigated and inform any future activities.
- We'd like to thank everyone for their continued patience, respecting No Access on site and keeping to the Public Rights of Way. If anyone has any concerns about unauthorised activity on site, please Arena Security on (Freephone) 0800 389 1494.

## Sue Ryder – Lights of Love Bedford

Sue Ryder is inviting people to remember and reflect upon special memories of loved ones at its Sue Ryder Lights of Love Bedford event this December.



The winter remembrance event, held at the Harpur Suite, Bedford, at 7.15pm on Wednesday 14th December, will see people come together alongside others in their community who are also living with loss to give thanks and collectively celebrate the lives of people who have died.

It will feature readings, songs and live music performances and guests are invited to make a dedication in memory of someone special, which will be displayed at the event.

Sue Ryder Lights of Love Bedford is free to attend and is open to anyone who wishes to commemorate a loved one, regardless of when they died or if they were a former patient of Sue Ryder.

Limited spaces are available. For more information or to register to attend visit [sueryder.org/lightsbedford](http://sueryder.org/lightsbedford) or contact the Sue Ryder St John's Hospice Fundraising Team via email [stjohnsfundraising@sueryder.org](mailto:stjohnsfundraising@sueryder.org) or call 01767 642412.

For those that are unable to attend the event in person, there is also an online dedication wall available at [sueryder.dedicationpage.org/lightsoflove2022](http://sueryder.dedicationpage.org/lightsoflove2022)

## Sue Ryder – December Daily Dash

Walk, jog, run or roll 5k every day this December and raise vital funds for Sue Ryder.

Do it your own way. On your own or in a group. Fast or slow. Morning, noon or night. However, you do the December Daily Dash, when you go the distance, you make the difference.



December can be a busy month. Take some time for yourself every day, whilst also helping Sue Ryder to continue to be there for people when it matters most.

It is free to take part, but it's your donations and fundraising that will make all the difference to patients and families needing Sue Ryder's specialist palliative, neurological and bereavement support. So, make December yours.

Sign up now at [decemberdailydash.com](http://decemberdailydash.com) or email [december.dailydash@sueryder.org](mailto:december.dailydash@sueryder.org).

# *Christmas Lights*

Switch On

Sunday 27th November 3 - 6pm



Festive stalls, Santa, and refreshments served at  
The Green Man

Amphill Town Band at 4.30pm

Light switch on at 5.30pm

Greensand Community Choir 5.30pm - 6pm

If anyone local would like a stall please contact:  
[clerk@clophill-pc.gov.uk](mailto:clerk@clophill-pc.gov.uk)



# What's on in and around Clophill



OCT

**Saturday 8<sup>th</sup>**

**Coffee and Croissants**, Methodist Church, 10am – 12noon. *See poster.*

**Saturday 29<sup>th</sup>**

**Pumpkin Festival**, Clophill Eco Lodges, 11am – 4pm. *See poster.*



NOV

**Saturday 12<sup>th</sup>**

**Coffee and Croissants**, Methodist Church, 10am – 12noon.

*See poster in this issue.*

**Friday 18<sup>th</sup>**

**Quiz Night**, St Mary's Church, 7:15pm for 7:30pm start.

*See poster in this issue.*

**Sunday 27<sup>th</sup>**

**Christmas Lights switch on and more**, Village green, 3pm – 6pm.

*See poster in this issue.*

**Plus...**

**Tuesdays...** in term time

- \* Clophill Preschool, Stay and Play sessions on Tuesdays 9:30-10:30am and Thursdays 1-2pm, at the Village Hall. *See 'Village Groups' for contact details.*

**Wednesdays...**

- \* Tea and Chat, Methodist Church, 10am – 12noon.

**Thursdays...**

- \* **NEW** Lunchtime Winter Warmer from 13th Oct, St Mary's Church, 12noon – 2pm. *See poster and St. Mary's news.*
- \* Thursday Leisure Club – TLC – St Mary's Church, 2pm.

**Fridays...**

- \* Clophill Toddler Group, 10am-11.30am, Village Hall.  
*See 'Village Groups' for contact details.*



## CHURCH SERVICES

**Regular services at St Mary's Church, Clophill...**

1st Sunday 8am, Holy Communion.

11am, Family Praise

2nd and 4th Sundays. 11am, Parish Communion.

3rd Sunday 11am, Morning Praise

**Regular services at Clophill Methodist Church...**

Weekly Worship at the Church, Sundays at 10:30am.



# Useful numbers

<b>Gas</b> (Emergency)	0800 111999
<b>Electricity</b> (Emergency)	0800 7838838
<b>Emergency Fire/Police/Ambulance</b>	999
<b>Water/Sewage</b> (Anglian Water)	0845 7145145
<b>Telephone</b> (Customer Services) 150	(Faults) 151
<b>Highways Department</b> (Central Bedfordshire Council)	0300 3008049
<b>Benefits Agency</b> (Bedford office)	01234 361500
<b>Registrar's Office</b> (Births/deaths/marriages)	0300 3008089
<b>Rail</b> (Enquiries)	0845 7484950
<b>Buses</b> 01234 262151 (Link A Ride) 01525 840511 (Flittabus)	01582 406561
<b>Luton Airport</b>	01582 405100
<b>Swimming</b> (Flitwick) 01525 717744 (Robinson Pool)	01234 212479

## LOCAL GOVERNMENT

<b>Central Beds Offices</b> (Chicksands)	0300 300 8000
<b>Mid-Bed; MP</b>	Nadine Dorries 01462 811992
<b>Central Bedfordshire Councillors</b>	Michael Blair 01525 404513
	Paul Duckett 07988 184061
<b>Clophill Parish Council</b> (Clerk) Heather Myott clerk@clophill-pc.gov.uk	07888 685 886

## HOSPITALS

<b>Bedford</b> (North & South) 01234 355122	<b>Admissions</b> 01234 261150
	<b>Appointments</b> 01234 359012
<b>Luton &amp; Dunstable</b>	0845 1270127

## DOCTOR'S CLINICS

<b>Amphill</b> (Houghton Close) 01525 300898	(Oliver Street) 01525 631395
	(Greensands) 01525 631390
<b>Shefford</b> Enquiries 01462 818620	<b>Appointments</b> 01462 810034
<b>Barton</b> 01582 528700	<b>Flitwick</b> 01525 715300

## POLICE

	<b>Non Emergency</b> 101
<b>County Police HQ</b>	01234 841212
<b>Amphill Station</b>	101

## CHURCHES

### St Mary's Parish Church

Rev'd Cannon Lynda Klimas rev.l.klimas@btinternet.com	01525 403139
(Church Warden) Mrs Anne Shegog anneshogog@gmail.com	01525 864868
Mr Steve Grylls stevegrylls24@gmail.com	01525 860076

### St Francis RC Church, Shefford

**Clophill Methodist Church** Rev'd Silas Wood, email: swood11@me.com, 01525 571392

	Mr John Errick 01525 860695
<b>Baptist Churches</b>	(Maulden) Ian Crawford 01525 634325
	(Shefford) Hazel Arnold 01462 812564

## SCHOOLS

<b>St Mary's C of E Lower School &amp; Nursery</b> (Headteacher Mrs K Bingley)	01525 860206
<b>Harlington Upper School</b> , Harlington	01525 755100
<b>Preschool</b> clophillpreschool@gmail.com (Chris) 07936 006381 or (Imogen) 07765 887868	

## Take out an annual ad in Clophill *SPOTLIGHT*

*Black & White per year*

This is one-sixth    £58    H 31 x W 126 mm

Please email our Advertising Manager

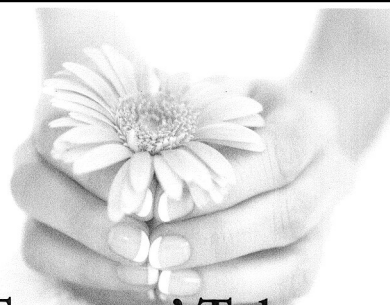
[ads@clophillspotlight.co.uk](mailto:ads@clophillspotlight.co.uk)



Bespoke carpentry and joinery solutions serving homes in Clophill and the surrounding area. Fully qualified with over 40 years' experience. We specialise in creating quality bespoke storage solutions, door hanging, fitting wooden flooring and refurbishing staircases, alongside a wide range of general carpentry and joinery services.

[info@purejoinerysolutions.co.uk](mailto:info@purejoinerysolutions.co.uk)

07786 463217



### Tammys' Talons

Nail Technician  
Gel. Manicure and Pedicure

**IZABELLEHAMMON**  
100% ACETONE FREE POLYMER  
CARGEL **IZ** manicure Champion

**Tammy Kirby**

Clophill, Bedfordshire, MK45 4AW

Tel : 07968379309

[tammystalons@gmail.com](mailto:tammystalons@gmail.com)

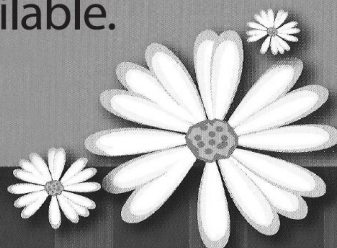
## Daisy Cooper

Spring cleans, one off cleans and moving home cleans all available.

[Daisycooper22@hotmail.co.uk](mailto:Daisycooper22@hotmail.co.uk)

Please call 07913 332914

Keeping your home as fresh as a Daisy



# LOCAL INDEPENDENT MORTGAGE ADVICE



- Access to the whole market
- Industry experts
- Personal service
- Vast experience
- Remortgage
- First time buyers
- Moving home
- Buy To Let



**THE  
MORTGAGE  
EXPERT**

[www.tmexpert.co.uk](http://www.tmexpert.co.uk)

*Contact your local independent mortgage expert: 01525 30 67 60*

*Endeavour House, Wrest Park, Silsoe MK45 4HS*

**YOUR HOME MAY BE REPOSSESSED IF YOU DO NOT KEEP UP REPAYMENTS ON YOUR MORTGAGE**

*We charge a fee of £495 for the straight forward mortgage application and up to £1,495 for the more complex ones.*

*Prior to application we will let you know when this becomes payable.*

*Please note we do not charge any fees upfront or for any initial advice.*

## E.T. Accountancy Services

Experienced Chartered Accountant and Chartered Tax adviser based in Clophill providing a full range of accountancy and taxation services to businesses and private individuals.

To arrange a free initial consultation please telephone me on 01525 590465 or email [emma@et-accountancy.co.uk](mailto:emma@et-accountancy.co.uk)

*Chartered Accountant and  
Chartered Tax Adviser*

Emma Thoulass FCA CTA  
[www.et-accountancy.co.uk](http://www.et-accountancy.co.uk)  
01525 590465



**Sjtax LTD**

Taxation and Accounting Services

## Professional friendly accountancy services

Fully qualified,  
Free initial consultation,  
competitive fees  
Sole traders, Ltd companies,  
bookkeeping, payroll,  
CIS, VAT & Tax.

[sally@sjtax.co.uk](mailto:sally@sjtax.co.uk)  
**01234 831997**  
**07899 808592**

## Painter and Decorator

Call Chris : 07950714579



*do you want your  
home brightening up?*

*all interior & exterior work*

*no job too small!*

*free no obligation quote*

*25 years experience  
& fully insured*

*facebook: @christopherthepainter*  
*email: chris.minihane@btinternet.com*

## JK Garden and Landscape Services Ltd



***We offer...***

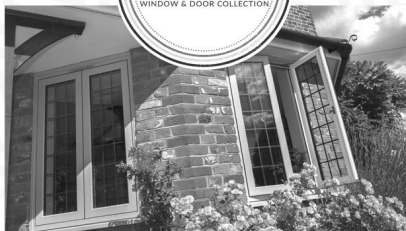


*full landscaping service  
patios  
fencing  
decking  
new lawns  
driveways  
all garden maintenance*

Contact us on **0791 2028254**  
or at **jkgardening@hotmail.co.uk**

You can also find us on Facebook

## Kings Windows

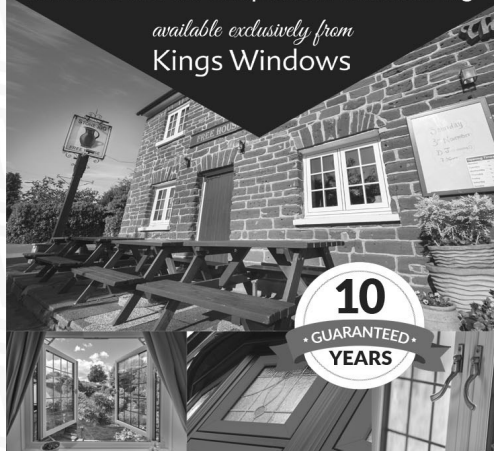


Available in a range of traditional colours  
Choose classic joints to look like wood  
Stunning handle options

## TIMELESS FLUSH TIMBER ALTERNATIVE WINDOWS

as seen in The Old Compasses & The Stone Jug

*available exclusively from  
Kings Windows*



**01582 882 800**  
**www.kingswindows.co.uk**

## Take out an annual ad in Clophill *SPOTLIGHT*

*Black & White per year*

This is one-third page   £88   H 61 x W 126 mm

Please email our Advertising Manager

[ads@clophillspotlight.co.uk](mailto:ads@clophillspotlight.co.uk)



## ACCOUNTING SERVICES

Providing a **Much Better** service for **Mid Beds** since 2000

If you are ***Self-employed*** or a ***Small Business*** and require assistance with  
**Accounts, HMRC tax returns, VAT**

we offer a total confidential service at competitive rates

Contact T: 01525 861087   M: 07714189994   E: [mbaccounts@btinternet.com](mailto:mbaccounts@btinternet.com)

Telephone

**01525  
860526**

## The Stone Jug

**A Free House**

BACK STREET, CLOPHILL

### **A Proper Pub for Proper People**

A family run village 'boozer' serving up great value, quality lunches that will fill you up without emptying your wallet! A pub is for 12 months of the year, 365 days and we're here for you on each and every one of them!

- 5 real ales, including 3 guest pumps that change frequently (see our Facebook page for details)
- selection of wines and Prosecco by the glass – or even better, by the bottle
- home-cooked lunches Tues-Sat, 12pm-2.30pm



### **REMEMBER OUR MOTTO**

**"A VISIT TO THE JUG IS BETTER THAN GOING TO A PUB"**

**CHEERS JOYCE, VIKKI & MARK**

[www.stonejug.co.uk](http://www.stonejug.co.uk)

[www.facebook.com/thestonejugclophill](http://www.facebook.com/thestonejugclophill)



Great songs  
Pop, musicals,  
folk, classical,  
world music  
and more

# Greensand Community Choir



**Mondays 7.30pm - 9pm**  
St. Mary's Church, High Street,  
Clophill MK45 4BJ

No auditions,  
no need to  
read music

Come along each week from  
Monday 25 April-Monday 4 July '22  
For adults of all singing abilities

**ISM**  
100% MUSICIANS

e: [greensandcommunitychoir@gmail.com](mailto:greensandcommunitychoir@gmail.com)  
t: 07975 520085

Vecteezy.com Find us on 



## Warm Property

Heating & Plumbing Specialists

We are Maulden based, fully insured, British Gas trained and with more than 15 years' experience.  
We offer Free No Obligation Quotes & Advice.



**0% INTEREST FREE CREDIT**

**12 YEAR Guarantee\***

Boiler And Heating Installations  
Fires, Warm Air Units & Ovens  
Landlord Certificates  
Servicing And Repairs



 **WORCESTER BOSCH**  
Accredited Installer

 **07716 478794**  
**01525 839342** 

**www.warmprops.co.uk**

## THE BLUECAT



## LUXURY CATTERY

**Tel: 01525 861416**  
[www.thebluecat.net](http://www.thebluecat.net)

Find us on Facebook @thebluecatcattery  
or email us at [enquiries@thebluecat.net](mailto:enquiries@thebluecat.net)

The Bluecat is a luxury cattery set in the quiet area of Jacques Lane in Clophill. With just 14 cat chalets, we have time to fuss, pamper and play with your cat to its heart's content whilst in our care.  
Please call for further information.

## Misty Double Glazing?

Over 30 Years experience. FREE Quotes

**KEEP YOUR WINDOW FRAMES...  
... WE JUST REPLACE THE GLASS!**

• UPVC • Aluminium • Or Wood

Because we replace just the glass the repair is a  
Fraction of the cost of a complete replacement window.

**BEFORE**  **AFTER** 



**mistydoubleglazing.co.uk**  
**QUALITY GLAZING SERVICES**  
**01525 876808**

**WE ALSO REPLACE BROKEN...**  
• Glass • Handles • Hinges & Locks  
**AND REPAIR...Patio Doors & Conservatories!**

# THE SECRET OF GREAT HAIR

The secret of great hair is a great haircut. *By Kevin Reynolds*  
Have your hair done in the comfort of your own home.

Free consultations available.

Kevin ran his own salon in the West End of London until he moved to Bedfordshire 15 years ago. Whether you're looking for a re-style, a new colour, original hair ideas, something cutting-edge or something familiar, you'll be safe in Kevin's hands.

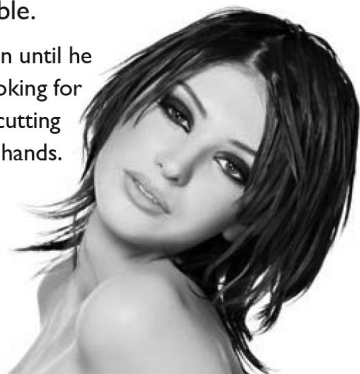
Call us now for an appointment

## 07970 467805

**kevinreynolds**

Hair Stylist

reynoldskevin59@gmail.com



the  
café

Eastcotts Park,  
Wallis Way,  
Bedford, MK42 0PE  
01234 266 366

Visit

[www.peacockscafe.co.uk](http://www.peacockscafe.co.uk)  
for more details on our opening  
hours and to view our full menu.

**W&H PEACOCK**  
AUCTIONEERS & VALUERS

## The Cafe at W&H Peacock is **OPEN**

View the salerooms for our upcoming auctions and  
then relax with a coffee and a slice of cake.

Our unique cafe in Bedford Auction Centre with free wi-fi  
comfortably seats over 100 customers. We serve cooked  
breakfasts, paninis and sandwiches, light lunches and  
snacks plus a range of hot and cold drinks.





# LOCAL ALLOY WHEEL REFURBISHMENT



**Tel:**  
**01525**  
**860069**

**Alloy Wheel Repairs**

**Diamond Cut Alloy Wheels Repaired On Site**

**Powder Coat Primers & Lacquers**

**Fast Turnaround Alloy Wheel Welding**

**Tyres At Competitive Prices**

**NEW for 2015 - 4 Wheel Alignment Service**

**[www.mintalloys.co.uk](http://www.mintalloys.co.uk)**

## Welcome to Clophill St Mary's C of E Lower School and Nursery

We are a small, friendly, village Lower School, graded "Good" by Ofsted (2021), with close links to the local community.

We welcome children from 2 years to 9 years, supporting and nurturing each individual child AND teaching them about life-long Values.

Wrap around care available for all ages (breakfast and after-school care).

### Acorn Nursery

Preschool provision in a beautiful bespoke building and outdoor space! Providing 30 hours free childcare entitlement with wrap-around care too!



**EVERYONE is welcome at St. Mary's and you do not have to be a practicing Christian to attend our school.**

**We are first and foremost a Village School and Nursery—)**

To arrange a visit, please call: 01525 860206 or email: [generaladmin@clophillstmaryschool.co.uk](mailto:generaladmin@clophillstmaryschool.co.uk)

For more information visit: [www.clophillstmaryschool.co.uk](http://www.clophillstmaryschool.co.uk)

SelectTravelHolidays  
Home of Cruise Select  
24A Mill Street, Bedford

Your local  
appointed Saga  
specialists



Which ever **SAGA**  
holiday you want to  
book, your friendly &  
knowledgeable local  
travel specialists at  
Select Travel Holidays  
can help with our  
friendly, personalised &  
impartial advice, all at  
no extra cost -  
Contact us today!

**SAGA**

Hotel Holidays

Ocean Cruises

Singles Holidays

River Cruises

Special Interest

Escorted tours



*Contact us today!*  
01234 326778

sales@selecttravelholidays.co.uk

www.selecttravelholidays.co.uk



BOOK WITH CONFIDENCE  
ABTA & ATOL protected



## ARCHITECTURAL DRAWINGS AND BUILDING DESIGN SERVICES

Professional Architectural design services provided for all types  
of private residential building projects including extensions, loft/  
garage conversions, garages and outbuildings through to new build  
dwellings with all necessary council approvals obtained.

For free estimates and advice contact Steve  
Coates on Flitwick 01525 862457 or 07960 215053.

stevecoates72@gmail.com

S & S Coates Surveying & Design, Unit 4 The Courtyard,  
r/o 13 High St, Clophill, MK45 4AB.



**CBuildE**  
chartered building engineer



# A L & G ABBOTT

F u n e r a l   D i r e c t o r s

~ Established 1832 ~

WITH YOU WHEN IT MATTERS MOST

An independent family business continuing to provide a caring & professional service to Bedford, Kempston & the surrounding villages.



- 24 Hour Personal Service
- Private Chapels of Rest
- Home Arrangements
- Bereavement Listening Service (Free to our families)
- Pre-Paid Funeral Plans
- Green Burials
- Civil Services Available



**T 01234 843222**

**[www.abbott-funerals.co.uk](http://www.abbott-funerals.co.uk)   [support@abbott-funerals.co.uk](mailto:support@abbott-funerals.co.uk)**

150 BEDFORD ROAD, KEMPSTON, BEDFORDSHIRE, MK42 8BH

# AIMS

Tim Kemp BA FCA  
Top Barn Rectory Road  
Steppingly MK45 5AT

TEL/FAX : 01525 717141  
MOBILE : 07900 823 012  
[www.aims.co.uk](http://www.aims.co.uk)  
e-mail: [timk@aims.co.uk](mailto:timk@aims.co.uk)

- ◆ **Professional** service providing for all your accounting and tax needs
- ◆ **Practical** advice based on 20 years experience in **running** businesses
- ◆ **Personal** approach with fixed fees relevant to the work **you** need
- ◆ **Friendly, local** accountant supporting the community for over 20 years

Please call for a free, no-obligation initial meeting

**ACCOUNTANTS FOR *business***

## Hills-Howson Financial Services

Financial adviser appointments available in your home or our office

The Old Post Office  
53 High Street  
Claphill  
Beds MK45 4BE

Tel: 01525 861803  
[www.hills-howson.co.uk](http://www.hills-howson.co.uk)  
[hills.howson@btconnect.com](mailto:hills.howson@btconnect.com)

Including:-

Investments

Pensions

Protection

Annuities

# Auction Sales & Valuations

Valuation, collection and auction service  
of individual items through to complete  
property and commercial clearances.

Call for a free no obligation quote or  
email **info@peacockauction.co.uk**

## SALE ENTRIES NOW INVITED

Antique & Modern Furniture • Clocks • Books • Ceramics & Glassware • Pictures & Prints • Bicycles  
Jewellery & Watches • Collectables • Garage Tools & Equipment • Household Electrical Items • Office  
Furniture & Equipment • Retail Products & Stock • Vehicles • Horticultural & Commercial Equipment  
Building Materials • Garden Furniture & Effects

**www.peacockauction.co.uk**



**W&H PEACOCK**  
AUCTIONEERS & VALUERS  
**01234 266366**



Eastcotts Park,  
Wallis Way,  
Bedford,  
MK42 0PE

## THE COMPUTER MAN



Got a problem with your computer and don't know what  
to do? Suffering with a virus or spam?

**Don't hesitate! Ring your local computer expert**

**Remote repairs or home visits  
(Day, evening & weekend)**

**Lap top/desk top loan  
(Free pick up & drop off in local area)**

Comprehensive health check from £35 (**Special Offer** £35 - normally £40)  
Refurbished fl at screen available from £15 • Refurbished base units available from £99



Contact Stephen Amos  
**07976 718567**  
**the.computerman@ntlworld.com**





## *Bathroom Vogue*

EST.  
1989

- Suppliers of traditional and modern equipment
- Working whirlpool & spa baths, power & steam shower systems on display
- Over 40 settings on display
- Complete installation service if required
- Personal friendly service from a family run business
- Wall and floor tiles
- Accessories
- Mirrors
- Bathroom furniture
- Heated towel rails
- Saunas
- Bathroom cabinets

# **SHEFFORD 01462 627002**

**[www.bathroomvogue.com](http://www.bathroomvogue.com)**

Unit 4A, Shefford Industrial Park, St Francis Way, Shefford SG17 5DZ



## **GARDEN DOCTOR**

**Rob McLeod**

Pruning Specialist

**Professional, Local, Experienced**

- \* All tree and hedge work undertaken
- \* High standard of work
- \* Waste material recycled for compost
- \* Free Quotations
- \* Local, reliable service you can trust

**Tel: 07763 239340 or 01525 861568**

**email: [rob@gardendoctor.org.uk](mailto:rob@gardendoctor.org.uk)**

**[www.gardendoctor.org.uk](http://www.gardendoctor.org.uk)**

*Call the Garden Doctor and bring Good Health to your Garden*



Hedging & Pruning  
Shrubs & Fruit Trees  
Tree Surgery & Removal  
Fully certificated and insured



## **AMPTHILL & FLITWICK PHYSIOTHERAPY CLINIC**

Tel: 01525 720882

[www.chartered-physiotherapy.co.uk](http://www.chartered-physiotherapy.co.uk)

[Info@anfphysio.co.uk](mailto:Info@anfphysio.co.uk)

**1 Kings Road Flitwick MK45 1ED**

**Helping you get back on track**



We offer the very best hands-on physiotherapy treatment

Neck/ Back/ Shoulder/Knee pain

Headaches/Migraines/Sciatica

Arthritis and all joint pain

Whiplash/RSI/Osteoporosis/Sports injuries

Vertigo and dizziness/Posture training and ergonomics

Long Covid

**WE ARE PROVIDERS FOR MOST INSURANCE COMPANIES**

**We also offer complementary treatments:**

Acupuncture/Chinese medicine

Clinical Psychology/Deep Tissue Massage



**The Happy Place.co.uk**

On the Green beside the Post Office every Friday, 4.30-7.30pm

We are your local mobile fish and chip van, we have been parked on the green every Friday for the past 6 years. We serve only the highest quality produce, cooked fresh to order and served to you by our friendly staff.

Why don't you pop down and come and Try Our Fry!

To avoid waiting in the cold, give us a call to

**place your order on: 07833 786108**

A big thank you to all our customers who have loyally supported us over the past couple of years.

## **Chapman & Kirby Heating**

**Gas, Plumbing & Heating Installations**

**Gas Safe Registered**

**Boiler Servicing & Maintenance**

**Call us now on: 07831 132308**



**Email: [info@chapmanandkirbyheating.co.uk](mailto:info@chapmanandkirbyheating.co.uk)**

11 Lyall Close, Flitwick, Beds., MK45 1JB



We take care of the details, so you can say  
goodbye the way you want to.

NEVILLE. Because there is a difference.

## **AMPTHILL**

The Old Church, Flitwick Road MK45 2NT

t: 01525 406132

e: [amphill@nevillefuneralservice.com](mailto:amphill@nevillefuneralservice.com)

---

## **SHEFFORD**

24 Clifton Road SG17 5AE

t: 01462 813258

e: [shefford@nevillefuneralservice.com](mailto:shefford@nevillefuneralservice.com)

[www.nevillefuneralservice.com](http://www.nevillefuneralservice.com)





# ARE YOU A LAWN LOVER?

From as little as

**£15**\*

per treatment

\* Based on a lawn size  
up to 40m<sup>2</sup>

## HELP YOUR LAWN TO THRIVE, NOT JUST SURVIVE

Over the last 30 years our love for lawns has grown and grown (just like our grass!). We combine our passion and enthusiasm with innovative technology as we continue to revolutionise UK Lawn Care. Our groundbreaking 12-month **Lawn Treatment Programmes**, keep your grass looking its best all year round, ensuring your lawn receives the love and attention it deserves.

*Let's create the lawn we both love*

Start your Lawn Care journey today:

Call us on 01234 709345/01480 597432

email: [bedford@greenthumb.co.uk](mailto:bedford@greenthumb.co.uk) visit: [greenthumb.co.uk/bedford](http://greenthumb.co.uk/bedford)

**GreenThumb**  
LAWN TREATMENT SERVICE 

Baths, Toilets &  
Showers  
Sinks and Taps  
Guttering  
Leaks and Burst Pipes  
Drainage  
Handyman jobs also



beta plumbing

Silsoe based  
No call out fee – free estimates  
Fully insured and guaranteed  
No job too small  
**07720 723653 01525 864859**  
[info@betaplumbing.co.uk](mailto:info@betaplumbing.co.uk)  
[www.betaplumbing.co.uk](http://www.betaplumbing.co.uk)

# TIM DOWNING

**Washing Machines Dishwashers Dryers Electric Ovens**  
**Repairs Servicing Sales**



Tel: Tim on Clophill 860148  
Mobile: 07969 545 276



A local family business offering a quality service at a competitive price

A member of the White Goods Trade Association  
Fully Insured Est. 1981

# Root 'n Branch

Your Local Friendly & Reliable Gardener

All aspects of Garden Maintenance undertaken  
• PRUNING • MOWING • WEEDING • PLANTING • HEDGING

Southfields, Shefford  
email: whooley@hotmail.co.uk

**Tel: 07771 537385**

Public Liability  
Insured



THE CONIFERS  
— CANINE HOTEL —

LUXURY  
ACCOMMODATION  
HOLISTIC FOOD SHOP

01525 860339

[www.the-conifers.co.uk](http://www.the-conifers.co.uk)



## STUART DREW ELECTRICAL SERVICES

PART P CERTIFIED  
MEMBER OF THE ECA  
QUALIFIED TO 18<sup>TH</sup> EDITION

Consumer unit upgrades (fuse box). EV charging points. Additional lights and sockets.  
Garden power. Electric showers fitted. Fault finding and electrical safety certification.

For a professional, courteous service with free estimates & all work guaranteed

29 Lincoln Way  
Harlington  
Beds  
LU5 6NG

**Fully qualified & insured**  
**Over 30 years experience**

Telephone  
01525 875965  
07941 812662

## Take out an annual ad in Clophill *SPOTLIGHT*

*Black & White per year*

This is one-sixth £58 H 31 x W 126 mm

Please email our Advertising Manager

[ads@clophillspotlight.co.uk](mailto:ads@clophillspotlight.co.uk)

# BURGLAR ALARMS

*New Alarms Fitted or Upgrade Existing Alarms*

## BURGLAR ALARMS

We fit New Alarms - Wired or Wireless Systems

*\*We can service and maintain your existing alarm\**

## CCTV

We fit high quality systems to maximise your security.

Access your CCTV via the internet or mobile.

## DOOR ENTRY

We fit a range of quality video and audio intercoms  
to suit your needs.

*We are a family run business with over 35 years  
experience in home security and crime prevention.*



[www.maximumsecuritysystems.co.uk](http://www.maximumsecuritysystems.co.uk)

Contact:

**01582 864138 / 07746 111520**

*For a free quote and consultation*

Take out an annual ad in Clophill **SPOTLIGHT**

*Black & White per year*

This is one-half page   £123   H 92 x W 126 mm

Please email our Advertising Manager

[ads@clophillspotlight.co.uk](mailto:ads@clophillspotlight.co.uk)

## Hire Clophill Village Hall



Wedding Receptions  
Birthdays & Special Occasions  
Dances and Discos  
Club & Community Meetings & Activities

Phone: 07821 643 936

Mail: [Clophill.villagehall@gmail.com](mailto:Clophill.villagehall@gmail.com) Web: [www.clophillvillagehall.co.uk](http://www.clophillvillagehall.co.uk)

## ROGER STOREY

**YOUR LOCAL PAINTER AND DECORATOR**

Friendly and Reliable Service

Many Years Experience

Please phone: **01525 861253** or **07800 777615**

## ANDREW BAKER WINDOWS

9 SHEFFORD ROAD  
CLOPHILL BEDS  
MK45 4BT

SPECIALISING IN UPVC WINDOWS,  
DOORS, CONSERVATORIES,  
FASCIA, SOFFITS, GUTTERS AND  
CLADDING. ALSO AVAILABLE FOR CARPENTRY  
WORK. NO JOB TOO SMALL OR LARGE.

20 Years experience.  
Free local quotes.

**FENSA**

Fensa Registered  
FIVE YEAR GUARANTEE

Contact Andrew: 01525862804 / 07825017855

Email: [abakerwindows@gmail.com](mailto:abakerwindows@gmail.com)

# Advertisers index

## Architectural Services

S&S Coates Surveying & Design 33

## Auctioneers & valuers

W&H Peacock 36

## Bathroom Services

Bathroom Vogue 37

## Builders & Carpenters

PURE joinery solutions 26

Stuart Benson Building Projects IFC

## Car Services/Repairs

A&F Motors Ltd IFC

Mint Alloys 32

TC Coomber Car Services BC

## Chimney Sweep

Poppins Chimney Sweep IBC

## Choirs

Greensand Community Choir 30

## Cleaning Services

Daisy Cooper 26

## Computer Services

The Computer Man 36

## Electrical Services

Stuart Drew Electrical Services 41

## Financial Services

AIMS Accounts 35

ET Accounting Services 27

Hills-Howson Financial Services 35

MB Accounting Services 29

SJ Tax & Accounting Services 27

The Mortgage Expert 27

## Food & Refreshments

The Happy Plaice 38

Café at W&H Peacock 31

## Funeral Services

AL&G Abbot, Funeral Directors 34

Neville Funeral Service 39

## Garden Services

Garden Doctor 37

Green Thumb Lawn Treatment 40

JK Garden and Landscape Services 28

Root 'n Branch 41

## Health & Beauty

Amphill & Flitwick 38

Physiotherapy 31

Kevin Reynolds 26

Tammy's Talons 26

## Home Improvements

Christopher The Painter 28

Roger Storey - Painter & Decorator 43

## Nursery Schools

Clophill PreSchool BC

Clophill St Mary's C of E

Acorn Lower School and Nursery 32

**Pet & Animal Services**

Conifer Kennels & Cattery 41

The Bluecat Luxury Cattery 30

## Plumbing & Drainage Services

Beta Plumbing 40

Chapman & Kirby Heating 38

Warm Property Services 30

## Print Services

Fidelity Design & print IFC

## Public Houses

The Stone Jug 29

## Repair Services

Tim Downing Repair Services 40

## Security Services

Maximum Security Systems 42

## Travel Services

Select Travel Holidays 33

## Village Hall

Clophill Village Hall 43

## Windows/Replacement

Andrew Baker Windows 43

AW Windows IBC

Kings Windows 28

Misty Double Glazing 30

*IFC = Inside Front Cover IBC = Inside Back Cover BC = Back Cover*

# Love reading Spotlight?

Don't forget to mention us when you use a business that  
advertises in this magazine!



# Clophill Preschool

**Your local Outstanding Preschool,  
based at Clophill Village Hall -  
welcoming children from  
2 years of age.**

We'll help your child to become an inventive  
and creative learner. With access to a fantastic  
outdoor area, our focus is on natural and  
exploratory 'play with a purpose'.



**Call us today to find  
out more:**

**07765 887868 or**

**07936 006381**

[www.clophillpreschool.co.uk](http://www.clophillpreschool.co.uk)







**MOT'S CLASS 4/5L/7  
CAR SERVICING & REPAIR  
TYRES & EXHAUSTS  
AIR CONDITIONING  
DIAGNOSTIC CODE READING**

**Collection  
& Delivery**  
SERVICE AVAILABLE  
Please ask

**AMPTHILL**  
**01525 406330**

UNIT F, AMPTHILL INDUSTRIAL ESTATE, STATION ROAD, AMPTHILL, MK45 2QY