

Vol 46 | No.1

FREE

CLOPHILL SPOTLIGHT

FEBRUARY 2023

LOVE YOUR
LOCAL NEWS



A word from the Editor...

Welcome to the February issue of Spotlight

Dear Reader,

We're back!!....

Spotlight returns after our winter break and we are raring to go for 2022!! A new year is as good a time as any, to reflect on the good and the perhaps not so good. I would love to know your views about Spotlight. What would you like more or, or less of!! Do you have something you would like to share with the village, in your local magazine.

Drop me a line at ***editorial@clophillspotlight.co.uk***

On a different note, Angela and Nigel our wonderful Ad managers have been busy already and we have another 4 new advertisers this month. If you enjoy dancing, are looking for a local builder, need a conveyancer or fancy a new kitchen; turn to the back pages.

Best wishes,

Elaine



The magazine staff

EDITOR	Elaine Jones editorial@clophillspotlight.co.uk	07918 975823
ADVERTISING MANAGER	Nigel and Angela Barker ads@clophillspotlight.co.uk	01525 868685
DESIGN MANAGER	Colin Watt	
DISTRIBUTION MANAGER	Toni Elston Phyllis Edwards, Paul Leckie	861813
TREASURER	Jon Bates	07725 068828
FRONT COVER PHOTOGRAPHER	Laura Woollard	

Deadline for articles is 20th of the month

You can also read Spotlight online

www.clophillspotlight.co.uk

Come into the Garden

With Kate Gardner



Hasn't it been a cold January, but despite the frozen days we are starting to see some indications that Spring is on its way. Bright yellow winter aconites, delicate snowdrops and yellow and purple crocus are slowly emerging. As the days start to lengthen there is a real temptation to start sowing seeds, however please don't be tempted to start sowing too soon. Here's why I leave my seed sowing until March or later.

I have a polytunnel and a green house and some special grow lights, but while these can help extend the growing year the seeds aren't making an appearance yet. The days are short, the temperature is low and while there is a little more daylight there is still not enough hours of daylight for most plants to flourish. Better to spend the time now planning what you want to grow, checking seed packets and cleaning tools ready to get going in the spring.

Plants need both light and warmth to grow healthily so unless you can provide them with the best growing conditions it's probably worth waiting until its much warmer before you get sowing. When I was studying horticulture some of the older tutors often said that if you could sit on the soil with your bare bum then it was warm enough to sow!!! Much better to wait until mid-March to improve your germination rates.

If you do have a warm, light space inside and you have some open packets of peas, brassica seeds, rocket or mustard seeds, then you can have a go at sowing some micro greens to add to salads or stir-fries, but please don't leave them on windowsills at night without covering them with some bubble wrap or better still move them when you close your curtains.

While it's good to hold off sowing there are some things that you can be doing to get ready for season ahead. If you have apple and pear trees you still have time to prune them up until about mid-March. The aim is to take out a bit of old wood each winter, to stimulate new. But the majority of the fruiting wood should be quite young - one to four years old, which is the wood that fruits best. You are aiming to create an open centre to your tree to allow more light into the canopy to ripen the shoots and fruit and to allow better airflow to reduce disease.

Try to stagger your pruning cuts over the whole tree. That way, the regrowth will be even. If you only prune the top branches, this is where all the new growth will shoot up from, giving you lots of young, non-fruiting shoots. Think of it as a thinning out process, selectively removing or shortening a branch here and there as you move around the tree. Focus on areas where the growth seems more crowded, removing, dead, diseased or damaged wood, plus any branches that are touching another branch.

If you planted a tree over the last couple of years then now is the time to check tree ties and stakes on established plants and replace, tighten or slacken them where necessary. Firm back newly planted trees and shrubs if they have been lifted by frost heave or strong winds and once the soil starts to warm up it's a good idea to apply some mulch around the base of the plants. Just remember that you keep it clear from the bark. This will help to hold in moisture as the weather warms up.

It may not be the most glamorous of winter tasks but cleaning out greenhouses, is an important one. Cleaning greenhouses, whether glass or plastic, greatly improves the growing environment for plants. By removing the algae, moss and grime it lets in more light, and helps control pests and diseases too. Clean the structural parts with disinfectant or detergent (hot solutions are often best, consult manufacturer's directions for use). Garden disinfectants, such as Jeyes fluid outdoor cleaner, specialist greenhouse cleaners, such as Just Glasshouse Cleaner or your usual domestic cleaning products work too. Glazing material should also be washed inside and out, but for plastic materials test on a small inconspicuous area first to be sure the cleaning material does not damage the glazing panels. Repair any damage and check that gutters are clear too. **Spring will be with us soon but in the meantime Happy Gardening.**

St Mary's School News

from Mrs. Bingle our Headteacher

We hope everyone had a lovely Christmas and we wish you all a great 2023. After an abrupt end to our Autumn Term (our boiler broke so we had to close on the last day of term!) we've had a busy January!



Rowan Class (Year 3) began their 12-week block of swimming lessons at Happy Tiddlers in Barton. So far, the sessions are going well and the children are really enjoying their time there each Thursday afternoon.

We finally managed to hold our Nativity in school, with Chestnut class performing a beautiful tableau whilst Oak read out the story and Oak and Rowan joined in with the singing. Even though we couldn't do it on the last day of term, we managed to fit it in on Epiphany instead!

Three of our children attended a Pupil Voice Conference at Samuel Whitbread school. Working alongside other children from our cluster schools, they created ideas on how to make the internet safer.

Our children have also taken part in two sporting events already this term! Some Year 3 children joined in with a Paralympic Festival and some Year 4's also competed in a Swimming competition – all at Flitwick Leisure Centre!

Finally, Key Stage 2 (Years 3 and 4) were Romans for the day at the end of January as a company called, 'History Off the Page' visited to take them back in time!

Jake the School Dog:

Jake had a lovely Christmas and has got straight back to work in school, spending time in all the classrooms over the last month!

Acorn Nursery News

from Mrs. Hayes our Nursery Manager and Early Years Leader:

We've had a wonderful start to the New Year, welcoming lots of new children and their families to our Nursery and St Mary's community. They are all settling in brilliantly and it's lovely to see our existing children live the value of friendship and welcome and look after them so well.

At the beginning of term, the children excitedly told us what they got up to in the Christmas holidays and about the presents Santa gave them. Some of our older children wrote thankyou letters to him with support. Many children showed an interest in using scissors - as part of our 'In the Moment Planning', we provided lots of different materials and craft scissors to experiment cutting with.

With the start of the Big Garden Birdwatch in January, we learnt about all kinds of birds (British and Worldwide), their body parts, the noises they make, what they eat, where they live, what they live in and their lifecycle: developing our children's 'Knowledge and Understanding of the World through fun and interesting activities. To develop fine motor skills, we collaged birds (cutting and sticking), painted paper plate birds (using paintbrushes and rollers), made birds out of playdough (lots of rolling and squeezing), made a bird box for our new wall display (screwing up tissue paper with our fingers), made bird nests out of hard spaghetti (balancing skills) and made bird feeders to hang outside (lots of squeezing and using our pincer grip). We sang bird related songs such as '5 little ducks', 'sing a song of sixpence' and learnt the traditional rhyme of '2 little dicky birds'.

Our Value for February is: Resilience (Perseverance):

In school, we will discuss the fact that achievement isn't easy and to succeed requires time and effort. Giving up is easy but it doesn't usually result in satisfaction. We will point out that houses are not built overnight, books are not written in a day and gardens don't look after themselves; all these things take hard work and perseverance. Children will be encouraged to spend time and effort over their activities this month and we will celebrate the fruits of their labours, as always, by sharing their work in our celebration assemblies. It should be clear to everyone one that when you make the effort and do your best the feeling of satisfaction and pride makes it all worthwhile!

At home, you could each choose a task which needs completing and find out who can see their task through to a successful conclusion. Hopefully everyone will achieve this and a lot of things which needed doing will be done!

Thought for the month: 'Many of life's failures are people who did not realise how close they were to success when they gave up.' *Thomas Alva Edison*



Clophill Preschool News

Hello everyone,

Happy New Year! What a cold start to the term but not as cold as the end of last year. We had a fabulous time on our Magical Woodland Walk event with some 75 families joining us. It felt very festive with the snow on the ground and the Salvation Army band playing carols to us as a thank you for all our donations to their Children's Christmas Gift appeal. Our Santa was totally brilliant, he knew a little fact about every child that came to see him and watching the children's faces when he talked with them was wonderful, thank you Santa!

We have been keeping busy as usual this term: the children have been looking at maps and drawing their own to find treasure, this moved onto talking about countries of the world and travelling, exploring atlases and non-fiction books. We investigated Chinese New Year tracing and copying the Chinese symbol for the year of the rabbit. They looked at Chinese masks and used fine motor skills to pick up wool 'noodles' with tweezers and counted out lucky gold coins into red envelopes.



The children have been exercising their right to vote with a 'hands up' to choose between books to be read for



story time, this involved counting, annotating and comparing numbers. There has been lots of fine motor work with threading and pattern work as well as mark making on frosty surfaces. The Adventure Friday bunch had a go at whittling and turned the tops of our redundant Christmas trees into kitchen whisks. They have also been perfecting their den building and there's been some very muddy puddle jumping!

We have such a wonderful outdoor environment, and the children are able to explore things they see and find each day. They have been fascinated by leaves trapped in blocks of ice from puddles. This week they watched kites flying overhead and this developed into talk about different birds of prey and how they hunt, which in turn developed into story telling about birds. Our staff are brilliant at bringing their own interests and information from books or programs that they have found fascinating into preschool to share with the children, this in turn will often spark further learning and interest, all going towards helping children to create their cognitive maps as they make connections between all that they see and explore.

Clophill Methodist Church News

Happy New year everyone We hope you had a happy and healthy Christmas.

December was a busy month for us, as it is in all churches. Along with celebrating the season of Advent and the birth of Jesus, we hosted many activities. December started with a stall at the lights switch on, at the Green. Thank you to those who visited us.

We held a special Christmas Messy church, where the children thought about the environment of our village creating woodland creatures from toilet rolls inners, and making bird feeders to hang on our old Christmas tree from previous years, planted in the garden which had outgrown its pot.

The following Saturday we held our Christmas Coffee and Croissants and Alternative Christmas Tree festival. Alongside the Messy church Woodland tree, we had a Remembrance tree, trees made out of magazines, a tree made out of all the street names in Clophill (Quality Streets!). Trees made from a pallet, boxes, sweets, a tea set and even a Bonsai Christmas tree! Thank you very much to all who organised, contributed trees, helped on the day and attended the event. The special day finished with our lovely scratch Nativity where children and adults acted out the Nativity story as it was narrated.

We hope that as it grew dark during Advent you enjoyed our Nativity scene lighting the front of our church and our Christmas tree lit in the rear garden. As Jesus is the light of the world, we hope that lighting up our church reminds us of the birth of Christ and that "All are Welcome here".

Please join us at Tea and Chat, weekly on a Wednesday from 10am, Coffee and Croissants Monthly (see poster) and every Sunday in our Worship at 10:30am. **All are Welcome.** Nicola Wood.



Keech Hospice Care

On the 27th November 2022 the Christmas lights were switched on at the Village Green. It really was a very successful day with so many wonderful stalls. I myself had a stall in aid of the children of Keech

Hospice Care. I am happy to say that everything was sold and raised £500. I must thank everyone who supported me, it really made so many children happy and I am sure you are all so proud of yourselves for being so kind in helping me to raise money for Christmas presents. **Thank you so much again.**

Yours sincerely, Cora Sheppard



Coffee and Croissants

Clophill Methodist Church

10am to 12 noon



Saturday 11th February

Saturday 11th March

Saturday 8th April

All Welcome

Clophill's Serving Survivors of WW1

By Sue Pearson

Continuing our series in celebration of Clophill's brave men who fought in and survived the first world war...

Frederick William & Alice Titmas of Woodview, (now 51) High Street, saw 3 sons and 2 sons-in-law go to war. All 3 sons were born in Clophill and returned to live with their parents until at least 1923.

Frederick Ernest Titmas, known as Ernest, was born in 1887 and in 1911 was a Gunner for the Royal Navy serving in China and East India. In WW1 he was a Gunner Royal Marine Artillery, serving on HMS Commonwealth a King Edward V11 class battleship which was used to supplement the Grand Fleet's cruisers on the Northern Patrol, and HMS Lord Nelson. Nelson was a pre-dreadnaught battleship which served at Ernest's time in the Dardanelles. Ernest was 5' 10" and considered to be of good character. He had enlisted in 1903.



He married Minnie Sanders in London in 1926. They continued to live at 51 High St until approximately 1939 when they moved to Blair Cottage, Mill Lane. Ernest died in Bedford Hospital in 1959.

Jesse Titmas was born in 1882. In 1911 he was working as an assistant to his father who was a Dairy Farmer. Jesse was a Private in the Royal Artillery Medical Corps. He was often reported on in Amptill News. In 1916 they reported that he was home on leave, suffering greatly from the effects of gas but that he had been on active duty for 17 months. They also report that he has lost a brother-in-law in Gallipoli and that he has another brother-in-law and 2 brothers serving. Later they report that he has sprained an ankle whilst on duty but subsequently returns to convey injured prisoners by train to Switzerland. In 1917 he served in France, near Etaples.

In 1917 he wrote home: - *"I suppose you are busy now digging potatoes. We're having pouring rain, but never mind, the weather will be better soon, and thank God we can say "All's well." I came across Rev. C.L. Matthews the other day, and had a long chat with him. He wished to be remembered to the parishioners of Clophill. The wounded are most complimentary in their remarks about him, and everybody appears to like him. The other day, I was going to see my brother Sam. Our train stopped within five miles of him overnight, but when I woke in the morning, I found I was miles away. Well, what is your opinion about the war? All the boys out here are confident of victory, and their opinion is that it is not far distant.*

I heard rather an amazing piece the other day from an Australian Sergeant. His company had just accomplished an excellent piece of business when his officer came up and says "Come on boys, let's go back on the battlefield and kill a few more Fritz's, and understand we spare none, wounded or not." Immediately on their return they came across a helpless Fritz in a shell hole weakly murmuring "Kamerad." The officer and sergeant bandaged the poor fellow up and gave him a drop of brandy. That's a specimen of the chivalry shown by our lads in France. Well to change the subject, how are the crops looking? They are excellent out here, but they will have the greatest difficulty to harvest them owing to the shortage of labour, but then, the French are exceptionally hard working."

In 1918 Ampthill News reports that he has refused promotion and by his own request is returning to his pre-war battalion of the RGA. It is believed that Jesse emigrated to Australia before WW11 and that he died there in 1954.

Sam Titmas was born in 1896. In 1911 Sam was described as an Apprentice (cycle). Sam joined the Royal Flying Corps on 4th November 1915 as an Airman 2nd Class. He embarked to France in December 1916. He received several promotions through Airman 1st Class, Acting Corporal, Corporal, and then to Sergeant in July 1917. He was transferred to the Royal Air Force in April 1918, the day on which it was formed. He left the RAF in January 1919 but joined the RAF Reserve the following month, finally being discharged in April, 1920. His record shows him as being a Joiner and just over 5ft 11ins. tall. He married May Wadsworth in 1928. In later life (1939 onwards) they were resident in Westbury Gardens, Luton. He continued to work as a Carpenter. Sam died in March 1979.

ST. MARY'S CHURCH NEWS

What a difference a year makes! I've just reread last January's St. Mary's News, which was dominated by Omicron. This year it's the weather! 4 events were planned for the week of "the snow", so some modifications were necessary. The concert by the Greensand Community Choir on Monday December 12th was held with a packed church and was much enjoyed. On the Wednesday the Christmas Lunch went ahead. Though a few people decided to pull out, more than 50 people sat down to an excellent meal of Turkey and Leak Pie and a selection of mouth-watering desserts. On the Friday the school wisely decided not to bring the children over to the church, and held their Nativity service in the school. On the Saturday we were hoping to repeat Christmas Evening in the Churchyard, but it was just too cold! So, it was held indoors and several hardy folk turned up as did the Clophill Christmas Choir, who sang carols for us. £178 was donated to their collection for Crisis.



Church News continued on next page >

Then the weather changed and normal service was resumed. It was wonderful to see the church full again for our Candlelit Carol Service on Christmas Eve. The collection of over £300 was divided between NOAH Enterprise in Luton and church funds. January started with Family Praise led by our 2 Lay Leaders of Worship and on the 22nd we joined the Methodist Church for their annual Covenant Service. By the time you read this we will have held our Coffee and Cake morning for Janina, the girl we support in Paraguay. We also support The Hub at the Village Hall with a collecting box in the church porch; and the Winter Warmer soup lunches on Thursdays have proved very popular. These will stop when the Wednesday Lent Lunches begin on March 1st (see poster).

We may be a small congregation, but we manage to be very active.



Betty Hampson MBE

It is with great sadness that our beloved mother Betty Hampson MBE passed away peacefully in Bedford Hospital aged 94 on 17th December 2022. She was known to many of you within the village and local community over the past 45 years, having moved into the village with her late husband Joe and two sons in 1971.

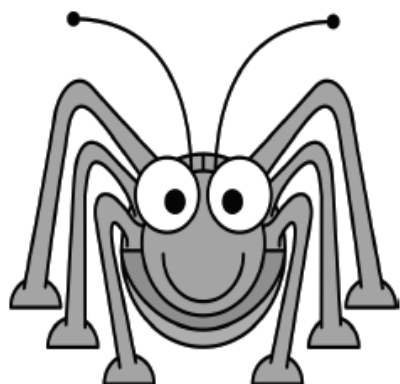
From the very beginning mum demonstrated her characteristic energy and drive as she became involved in the various activities of the village, which included: Village hall youth club, local girl guides, village hall committee and past secretary of Clophill WI.

With the creation of Beverley Court, Mum saw the opportunity to set up a social meeting place for the village over 60's and with the permission and support of the resident warden Jackie, the Tuesday Club was formed in 1977. She organised weekly meetings, fund raising events and trips away both daily shopping and holidays away for a week. The fund raising would go towards worthy charities such as Bedfordshire Air Ambulance and Cancer Research.

The local community in recognition of her unstinting work in the village (in particular for its elderly parishioners over the years) nominated her for the MBE award in 2009. It was such an honour and highlight for Mum to receive the award from the queen herself, being a big royalist throughout her life.

Thank you all for your kind messages of sympathy, we are hoping to have a memorial service at St Mary's Church Clophill at a date to be confirmed after the funeral. **Christopher and Ian Hampson.**

CLOPHILL
METHODIST
CHURCH



BEETLE DRIVE

Saturday 25th February 2023

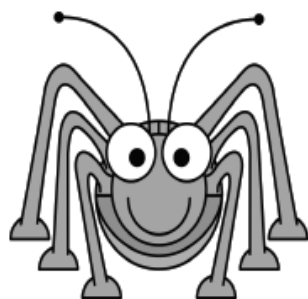
6:30pm

Adults £5:00 children £2:50

Refreshments

In Aid of : Clophill Methodist Church

Tel: 01525 860695



St Mary the Virgin. Clophill

Please come to our

Lent Lunches



1st March St. Mary's Church

8th March St. Mary's Church

15th March TBA

22nd March St Mary's Church

29th March St. Mary's Church

12 noon -2pm

Donations will be given to Christian Aid & Marie Curie

Everyone very welcome

Raffle

**For information phone Carolyn 01462 815433 or Gill Jones
01525 861058**

Please call if you require transport

Clophill Community Hub - Update



Following a very successful fundraising programme with generous donations from Ward Councillors for Clophill and Maulden and Clophill Parish Council, plus Tesco, Asda and the Co-op: the Clophill Community Hub project quickly took shape and by 1st December 2022 it was open for business.

One of the key challenges was to create a supply line of donations, but with a network of donation points **at St Mary's School in Clophill, Clophill Pre School and St Mary's Church** both in **Clophill** and **Maulden** along with the **Co-op in Clophill**, we have been thrilled by the generosity of local people in our own village of Clophill but also from St Mary's Church in Maulden.



Uptake was steady in December but maybe it comes as no surprise that since the New Year we have seen a real increase in usage, which is exactly what we want to see. **We are starting to see what items are popular and go quite quickly, such as cereals, biscuits, crisps, household items such as toilet rolls and washing-up liquid.** For some

strange reason **Pot Noodles** seem to go within hours!

So, if you are thinking of donating bear these items in mind along with other staple items, ambient food products (obviously within their sell-by date), household products, health & beauty and baby products.

For those wishing to donate, use the drop-off points listed above.

Please note we do not want any clothes (until the clothes bank arrives), household items, large toys or CD's. Barnardo's in Amptill will be very pleased to receive these kinds of donations.

Hopefully one of the outcomes of this article will be to ensure that more local residents become aware of the Community Hub Food Bank and those in need of a little help at his difficult time feel welcome to come along and utilise this facility. It may not be you who needs to use the services of the Hub, but do pass on the presence of our Food Bank to those who you think may need a little help. To keep up to date you can find us (and make contact) on our own Facebook page **Clophill Community Hub**.

Please generously and take thoughtfully - Steve Langhorn

Open Weekdays 9am till 3pm

Reflections – Clophill in February 1978

Voices from the past

Continuing our series looking back at previous issues of Spotlight and Clophill Village life... *By Julie Benson*

As now, there wasn't a January edition of 'Outlook', so this is from the Feb/March one. So, let us begin with – yes - our very own local group '**Home Brew**' on the cover as "they appeared along with Acker Bilk at Hunting Engineering" which I mentioned in December 2022's edition of Spotlight. This is what they looked like in 1977. For the life of me, I cannot recall their names – can you remember who played which instrument?



As now, street lighting and the **Village Hall** were on the Parish Council's agenda with planning applications for an extension at the rear of 56 High Street and an extension over the garage at 36 Cainhoe Road. **The Brownies** took part in a **sponsored silence** raising "a very creditable £73", part of which bought "five hybrid roses which were planted at the entrance to Beverley Court on 17th December." This seemed to be a busy day as **the Guides** also planted roses there, this time five floribunda ones. It was all part of the 'Bedfordshire's Jubilee Challenge'.

They also held a joint Jumble Sale during which several raffle prizes were won; Raymond Alford won sherry, Helen Trudgill, shortbread; Karen Pitts, a pendant necklace and Helen Craig, talc and hand cream. Raymond also guessed where 'Teddy's pain' was.

The **Village Hall Committee** raised £50 from Father Christmas touring the village – thanks were given to Derek Keens for driving the tractor and trailer. At their meeting, it was noted that direction signs were ready to be put up; heating improvements were on their way with apologies to hirers 'for any temporary discomfort'; thanks were given to the WI for a donation towards the cost of the stage lighting; new stage steps were 'to be purchased to replace those stolen' – and 'Home Brew' was to be offered the use of the hall for their practice. (Brilliant!) **WI** members enjoyed their Christmas dinner, sing-song and games at the village Hall. "Mrs J Myers welcomed thirty members to the January meeting." the subject was 'The Forestry Commission'. I might even have been there and so enjoyed trying to recognise the different leaves she brought along.

The **Flower Club** held their AGM with officers – mesdames Hudson, Cranswick, Osborne and Tucker being elected along with committee members Pearce, Smith, Adkins, Trudgill, Carr, Gibbs, Gibson, Pitts and Naylor. The **Fete Committee** started arrangements for Fete week activities and a film 'Red River of Life' (about the human heart – sounds fascinating) was advertised for a showing at the Village Hall in February. '**Letters to the Editor**' included thanks from S.J. Pitts of the Methodist Church to 'Spotlight' for its support; thanks, from Frankie Lovett and Lilian Rudolph for the support they received for their H.U.L.A. coffee morning which raised £35.40 and Reginald Grummitt thanked those who donated to the Darby and Joan raffle.

These are from the 'Laugh with Spotlight':

Q: What's the best cure for water on the knee? A: Drainpipe trousers.

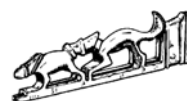
Q: Doctor, my broken ribs give me a stich in my side. A: That shows the bones are knitting. (Well, it's only just past the cracker season isn't it!)

The engagement of Teresa Jennings and Philip Geary was published – what a lovely note to end on.

Ampthill & District Archaeological & Local History Society

Monday 6th February 2023

Flitton and Greenfield in WWII (Part 1)



This talk shows what life was like for the villagers and was mirrored by villages throughout England in the war years. Speaker: Margaret Butt.

Lecture Theatre, Flitwick Library, MK45 1QJ, 7.30 for 7.45pm. £2.00 for members & £3.00 for visitors is payable on the door. This talk will also be broadcast live via Zoom to Society members.

For further details: clive.makin@ntlworld.com Tel: 01582 655785

6th March - Jolly Good Boating Weather – Bedford Regattas.

www.adalhs.org.uk

Wildlife walks & talks

February : March

Friday, February 10th, Maulden Village Hall, 7:00 pm for 7.30 pm start

Quiz Night including a fish and chips supper*

Come and test your knowledge on a range of subjects and have a fun evening!
You can now book in your teams, maximum six members, for the event. Email Ann with names of your team members, a team name and meal choices. * Vegetarian option available.

Cash payments at the door ONLY please.

£12.00 per person

Note: Due to conditions of the hall's license, you may not bring or consume your own alcohol. Wine, beer, and soft drinks will be available to purchase from the bar.

Monday, March 20th, Maulden Church Hall, 7:30pm

Talk by Dr Wilf Powell – ‘Wildlife of Estonia’*

Although a small country, Estonia has a wealth of wildlife and one of the lowest population densities in Europe. For example, it has over 100 butterfly species despite being on the same latitude as northern Scotland. It also lies on a major bird migration route, the East Atlantic Flyway, with around 2 million birds along its western and northern coastlines in Spring.

Wilf has been lucky enough to visit Estonia six times since 2009 and in this talk, he will discuss some of his favourite sites for wildlife and show a range of fauna and flora that can be encountered there.

*£4.00 per adult

Open to all, but please reserve, as space is limited.

For additional information or to reserve your place please email

flitvale.info@gmail.com.

(If you don't have email, please ring Ann on 07580 178889 between 6-8 pm.)

The Wildlife Trust for Bedfordshire, Cambridgeshire and Northamptonshire

Registered charity number: 1000412 www.wildlifebcn.org

Flit Vale Local Group: www.flitvale.org.uk

Clophill and District Flower Club



In December we were entertained to an excellent demonstration by Lee Berrill who is a very creative floral designer. All his designs were festive incorporating beautiful flowers, some sparkle and his own constructions and structures. He must spend hours preparing for a demonstration and each design had two or more placements so there were lots of lucky people who won an arrangement in the raffle. There was a large audience filling the Village Hall with members and visitors and Lee got them all in a festive mood.



In December the Home Counties Area of NAFAS held another virtual Competition 'This Festive Season' and I was thrilled to be told that Linda O'Toole from our club gained the Second Prize – see the picture. Well done **Linda**.

In January we held the AGM when we reviewed the past successful year and discussed the coming year. Last Year we celebrated our 45th + 1 Anniversary and also arranged

flowers for several local weddings. **The Charity table** has been very successful and it was agreed to make a donation of £700 to the **Mid-Beds Women's Refuge**. A representative will be at our next meeting to accept the donation. Each month we have a charity table that has a theme, where members donate items e.g. scarves and jewellery or bags. In February it will be Jigsaws and Board games and vases and containers in March.

I am delighted to say that **the Flower Club Committee** is staying the same and I am very fortunate to have such a supportive group to work with.

We also have members who help in different ways, e.g. on the sales tables, the refreshments and special events.

Our Programme Secretary Joan has booked an excellent programme for 2023. All details are on our website www.clophillflowerclub.com. We are now one of the largest Flower Clubs in the Home Counties and we always welcome new members and visitors to all our meetings.

2nd March Mark Entwistle from Lancashire

Carolyn Cranswick
Chairman of Clophill and District Flower Club

Clophill Parish Council



A lively meeting was held at the Methodist church on the 10th January. In open session an allotment holder petitioned the Council to provide water to the Townshott allotments. The lack of water is an issue, particularly with the hotter summers, which was now impacting productivity. The CPC resolved to look at costings for adding water supply to the allotment.

A number of items of parishioner correspondence were discussed, these included, the request for an additional grit bin, on the bend on Cainhoe, which the council resolved to supply.

The Neighbourhood Draft plan will be ready for final consultation over the next month before moving to final CPC and CBC approval, prior to referendum.

Highways Update

Cllr Rodell addressed the CBC Traffic Management meeting in late November to challenge the A6 roundabout scheme. The decision to proceed had already been taken prior to meeting. The meeting was to address speed limits and associated works to mitigate disruption during construction. Cllr Rodell asked the exec to reconsider the decision to remove the footbridge. This was confirmed as under review. The chair Ian Delgarno offered to meet CPC re traffic management for the village. Two meetings have now taken place to form a plan for Clophill.

We are currently looking at the following;

- *20 MPH in the village*
- *Engineering Curb for the A6 turning to Readshill to prevent HGV's using this route*
- *Additional SID's and moving existing ones*
- *White lining solutions*
- *Buffer 40 MPH zone on A6 north of gates*
- *'Slow Horses' Signs.*

Your village needs you...

The CPC would welcome volunteer organisers to help the council organise regular litter picks around the village. On a monthly basis. The CPC will supply equipment (pickers/sacks etc). If you would be prepared to take this on, please contact the clerk. (clerk@clophill-pc.gov.uk)

The Pan Bedfordshire Bus User Forum is a new forum looking at retaining and improving Bus services across the county. If you would like to be involved in a voluntary role to represent the council and report back, please contact us for a discussion.

Planning Applications

Decisions Required Prior to Meeting.

CB/22/04522/FULL

Location: 47 Cainhoe Road

Proposal: Construction of a dropped kerb.

SUPPORT (but with a straight road splay, not 45 degree)

CB/22/04595/FULL

Location: The Boat House, 12 Little Lane

Proposal: Change of use of paddock land to residential garden, hard surfaced access drive and repositioned post and rail fencing.

NO COMMENT

CB/TCA/22/00627

Location: 48A High Street

Proposal: Works to trees within a Conservation Area.

NO COMMENT

CB/22/04335/FULL

Location: 1 Longacre Place

Proposal: Add 2 electric doors to existing car port.

NO COMMENT

For Consideration at meeting:

CB/22/04876/FULL

Location: Mouse Farm, Shefford Road

Proposal: Change of use of part of former paddock to residential garden and the construction of a garage/ maintenance/ storage barn.

OBJECT

CB/22/04911/FULL

Location: 104 High Street

Proposal: Single storey rear extension, partial garage conversion and detached garden room.

OBJECT

Next Parish Councill Meeting

21st February 2023, Methodist Church @ 7:45pm.

Recycling for charity

I am collecting used postage stamps for **Redwings Horse sanctuary** in Norfolk. If you would like to drop them into 59 High Street, Clophill then I will forward them on.

Many thanks, Angela Barker



Parish Registers for January and February

Over the 30 or so years I have been researching our church records I have found the changes fascinating, especially in the Christian names and occupations. In the earliest years most of the fathers were recorded as “labourers” and many were unable to sign their names, but as the years progressed and education developed, they became more literate and jobs more diverse. Also, you can see the improvement in health as fewer young children and women are recorded in the burial registers.

Some of you may have noticed that last year there were no marriages for 1872. This wasn't because none took place, I simply failed to write them down. This omission will be rectified this year.

1823

Baptisms

- Jan 12 Joseph, s of Joseph and
Ann Bushby.
William, s of William and Mary
Johnson, f a footman.
Edward, s of William and Mary
Burrows.
19 Louise, d of George and
Elizabeth Garner (?)
Feb 23 Ann, d of Ann by Stephen (?) a
gardener.

Burials

- Jan 24 Mary Burgoyne (?)
28 Elizabeth Hollaman (?)
Feb 18 Catherine Harris.
22 Elizabeth Chipperfield.
25 Martha Denton.

1872

Marriages

- Feb 03 George Hare, 23 to Mary Ann
Grummitt, 19.
10 William Langley, 21 to Mary
Ann Webb, 18.
25 Frederick Tuffnell, 27
brickmaker, to Mary Ann
Maudlin, 28
Mandlin (?)

1873

Baptisms

- Jan 26 James Heathfield.
Noah Chapman.
Emily Simpson.
Feb 27 Alice (?)

Burials

- Feb 15 Charles Chapman, 21.

1923

Baptisms

- Feb 04 Frederick Alfred Percy Kirby.
No marriages or burials recorded.

1973

- No registers recorded in either month.

St. Mary's Registers for 2023

- Jan 12 Funeral followed by burial
Stanley Lawrence Woodward, 91.

What's on in and around Clophill



FEB

Saturday 11th

Coffee and Croissants, Methodist Church, 10am-12noon. *See poster.*

Saturday 25th

Beetle Drive, Methodist Church, 6:30pm. *See poster.*



MAR

Saturday 11th

Coffee and Croissants, Methodist Church, 10am-12noon. *See poster.*

Wednesday 1st, 8th, 15th, 22nd and 29th

Lent Lunches, St Mary's Church, 12noon-2pm. *See poster.*

Plus....

Weekdays during term time

* Clophill Community Hub is open, Village Hall, 9am to 3pm.

Mondays...

* Greensand Community Choir, St. Mary's Church, 7:30-9pm.

Tuesdays... in term time

* Clophill Preschool, Stay and Play 9:30-10:30am and Thursdays 1-2pm, Village Hall.

Wednesdays...

* Tea and Chat, Methodist Church, 10am – 12noon.

* Beverley Court Bingo Night, in the Residents lounge, 7pm. All welcome.....

Thursdays...

* Lunchtime Winter Warmer, St Mary's Church, 12noon – 2pm, followed by....

* Thursday Leisure Club – TLC – St Mary's Church, 2pm.

Fridays...

* Clophill Toddler Group, 10am-11.30am, Village Hall.

CHURCH SERVICES

Regular services at St Mary's Church, Clophill...

1st Sunday 8am, Holy Communion and 11am, Family Praise

Other Sundays 11am, Parish Communion

Regular services at Clophill Methodist Church...

Weekly Worship at the Church, Sundays at 10:30am.

Katherine Concerts running in Ampthill.

Continuing the outstanding classical music series set in the beautiful acoustic of Ampthill's Methodist Church.



Katherine Concert's events in February and March are:

Friday 10th February - Dmytro Fonariuk, clarinet & piano

Friday 17th February - Sherry Shen, violin & cello

Friday 24th February - Bethan Terry, soprano & piano

Friday 3rd March - Benjamin Carnell - cello & piano

Friday 10th March - Martin Pacey - piano

Friday 17th March - Zoltan Duo - violin & cello

Friday 24th March - David Zucchi - saxophone & piano

The 45-minute recitals at Ampthill Methodist Church begin at 2pm, and are followed by refreshments in the upstairs School Room.

Tickets (£12) are available via Absolutely ShabbyLass or
www.ticketsource.co.uk/Katherine-Concerts

Village groups

Beverley Court		860920
Brownies	enquiryym.girlguiding.org.uk	
Clophill Community Care	Duty Contact	07791 773705
Clophill Heritage Trust	Ali Bradbury	07894 710001
Clophill Preschool	Imogen	07765 887868
	Chris	07936 006381
Clophill St Mary's C of E Lower School & Nursery	Emma Topliff	860206
Clophill Toddler Group	Charlotte Messer	07538 150058
Clophill United Charities	Val Martin	860900
Conservation Group	Brian Adams	862297
Flower Club	Gillian Hill	860539
Friends of the Cheshire Home	Sue Pearson	861110
Funzone After School Club		07903 167493
Greensand Community Choir	Luke	07975 520085
Indoor Carpet Bowls	Tony Meredith	860754
Messy Church	Victoria Higgins	07920 568861
	victoriajhiggins@hotmail.co.uk	
Friends of St Mary's (FOSM)	Mary Milne and Jenny Garnham	

Useful numbers

Gas (Emergency)			0800 111999
Electricity (Emergency)			0800 7838838
Emergency Fire/Police/Ambulance			999
Water/Sewage (Anglian Water)			0845 7145145
Telephone		(Customer Services) 150	(Faults) 151
Highways Department (Central Bedfordshire Council)			0300 3008049
Benefits Agency (Bedford office)			01234 361500
Registrar's Office (Births/deaths/marriages)			0300 3008089
Rail (Enquiries)			0845 7484950
Buses	01234 262151	(Link A Ride) 01525 840511	(Flittabus) 01582 406561
Luton Airport			01582 405100
Swimming		(Flitwick) 01525 717744	(Robinson Pool) 01234 212479
LOCAL GOVERNMENT			
Central Beds Offices (Chicksands)			0300 300 8000
Mid-Bed; MP		Nadine Dorries	0207 219 5928
Central Bedfordshire Councillors		Michael Blair	01525 404513
		Paul Duckett	07988 184061
		Mark Smith	0300 300 8541
Clophill Parish Council	(Clerk) Heather Myott	clerk@clophill-pc.gov.uk	07888 685 886
HOSPITALS			
Bedford (North & South)	01234 355122	Admissions	01234 261150
		Appointments	01234 359012
Luton & Dunstable			0845 1270127
DOCTOR'S CLINICS			
Amphill	(Houghton Close) 01525 300898	(Oliver Street)	01525 631395
		(Greensands)	01525 631390
Shefford	Enquiries 01462 818620	Appointments	01462 810034
Barton	01582 528700	Flitwick	01525 715300
POLICE			
County Police HQ		Non Emergency	101
Amphill Station			01234 841212
			101
CHURCHES			
St Mary's Parish Church			
	Revd Cannon Lynda Klimas	rev.l.klimas@btinternet.com	01525 403139
	(Church Warden) Mrs Anne Shegog	anneshegog@gmail.com	01525 864868
St Francis RC Church, Shefford			01452 813436
Clophill Methodist Church	Revd Silas Wood, email: swood11@me.com,		01525 571392
	Mr John Errick		01525 860695
Baptist Churches		(Maulden) Ian Crawford	01525 634325
		(Shefford) Hazel Arnold	01462 812564
SCHOOLS			
St Mary's C of E Lower School & Nursery (Headteacher Mrs K Bingley)			01525 860206
Harlington Upper School, Harlington			01525 755100
Preschool	clophillpreschool@gmail.com (Chris) 07936 006381 or (Imogen)		07765 887868
Redborne Upper School, Amphill			01525 404462
Robert Bloomfield Middle School, Shefford			01462 628800

DAVID JAMES

WWW.DAVIDJAMESKITCHENS.CO.UK



We are a local manufacturer of beautiful kitchens. We sell direct to save you money. Our Pulloxhill showroom has an extensive display of different styles and is open Monday - Friday. 01525 722230

Consistent quality care is just a phone call away

- ✓ Choose who you want to support you
- ✓ See the same person every time
- ✓ Every Personal Support Assistant is fully insured, trained and QCAS approved
- ✓ 40% cheaper than agencies on average

01908 464350
hubcaresupport.co.uk



Join the Hub team as a Personal Support Assistant - £20 per hour!

WANT TO TRY YOGA?

A regular yoga class is the best way to build strength, increase mobility and flexibility. It offers a plethora of tools for relieving stress and improving sleep, happiness, health and focus. Book you space or call me for a quick consultation.



Tuesday
Slow Flow for beginners
11 -12pm

Small groups class on Tue or one-to-one sessions available.

Warren Lane,
MK45 4AS
Enquire 07932505265
Bernie
www.beyogafit.co.uk



A Family Vet for Family Pets

We are a family-owned veterinary practice in the centre of Amphill. We believe in providing fantastic stress-free care tailored to individual pets and owners.

We have now launched our Pet Health Plan, to help make preventative health care for your pet as easy as possible.

For more information:

Visit our website at
www.amphillvets.co.uk

or

Phone us on 01525 582002

or

Pop in for a chat and to meet the
team



JOIN THE TRIBE

START WITH OUR 30 DAY TRIAL



	MONDAY	TUESDAY	WEDNESDAY	THURSDAY	FRIDAY	SATURDAY	SUNDAY
6AM	MOVE	POWER	ENGINE	POWER	HYBRID		
7AM			ENGINE			ENGINE	
9:30AM	MOVE	POWER	ENGINE	POWER	HYBRID	POWER	BUILD 9AM
10:30AM						ENGINE	
5PM		POWER	ENGINE				
6PM	MOVE	POWER	ENGINE	POWER	HYBRID		
7PM	LIFT	POWER	LIFT	POWER			
8PM	MOVE	POWER	ENGINE	POWER			

HERE AT TRIBE, WE PRIDE OURSELVES ON BEING MORE THAN JUST A GYM.

WE HAVE CREATED A UNIQUE FITNESS COMMUNITY AND CULTURE TO HELP EVERY TRIBE MEMBER BUILD CONFIDENCE, FITNESS, AND HEALTH.

OUR AIM IS FOR YOU TO LEAVE EVERY CLASS FEELING A SENSE OF ACHIEVEMENT.

CHOOSE FROM OVER 30 CLASSES A WEEK TO IMPROVE STRENGTH, FITNESS AND MOBILITY.

WE ALSO HAVE SMALL GROUP PT, 1-1 PT AND NUTRITION COACHING OPTIONS.

HAYNES WEST END, LONDON LANE
BEHIND WOBURN COUNTRY FOODS
MK453RA



INFO@TRIBESTRENGTHGYM.COM
TRIBESTRENGTHGYM
WWW.TRIBESTRENGTHGYM.COM
CALL US ON 07500006408



YOUR NEW LOCAL DENTIST

REGISTER
ONLINE.
OUR NEW
PATIENT
EXAMINATION
JUST
£49



@SilsoeDentalClinic



SILSOE DENTAL
CLINIC

HAVE YOU BOOKED YOUR WINTER DENTAL CHECK UP?

Local, Principal Dentist, Dr. Salaman Iqbal & his team offer a full range of high quality dental treatments at the new state of the art private dental clinic in Silsoe, including;

Emergency Appointments, Direct Hygienist access, Composite Fillings, Dental Implants, Cosmetic Dentistry, Root Canal Treatment, Tooth Extraction, Invisalign, Dentures & more.

Register for your private appointment & consultation today.

For more information:

01525 868 600

www.SilsoeDental.co.uk


Hello@SilsoeDental.co.uk

First Floor, 4 The Gateway, Blackthorn Place, Silsoe, Bedfordshire, MK45 4PZ
(Next door to Co-op Food -Silsoe, Mander Farm Road)

Stray Cat
Rescue



We are a registered charity, run by volunteers. We are based in rural Bedfordshire and have been rehoming and rehabilitating cats for over 20 years.
We always have lots of beautiful cats waiting for loving homes.

If you're looking to adopt, please check out our social media pages & get in touch with us! 



[facebook.com/StrayCatRescue](https://www.facebook.com/StrayCatRescue)



[straycatrescue](https://www.instagram.com/straycatrescue)



www.straycatrescue.org.uk



Bespoke carpentry and joinery solutions serving homes in Clophill and the surrounding area. Fully qualified with over 40 years' experience. We specialise in creating quality bespoke storage solutions, door hanging, fitting wooden flooring and refurbishing staircases, alongside a wide range of general carpentry and joinery services.

info@purejoinerysolutions.co.uk

07786 463217



Tammys' Talons

Nail Technician
Gel. Manicure and Pedicure

IZABELLE HAMMOND
NAIL TECHNICIAN
CALGEL IZ manicure pedicure

Tammy Kirby

Clophill, Bedfordshire, MK45 4AW

Tel : 07968379309

tammystalons@gmail.com

Daisy Cooper

Spring cleans, one off cleans and moving home cleans all available.

Daisycooper22@hotmail.co.uk
Please call 07913 332914

Keeping your home as fresh as a Daisy



LOCAL INDEPENDENT MORTGAGE ADVICE



- Access to the whole market
- Industry experts
- Personal service
- Vast experience
- Remortgage
- First time buyers
- Moving home
- Buy To Let



**THE
MORTGAGE
EXPERT**

www.tmexpert.co.uk

Contact your local independent mortgage expert: 01525 30 67 60

Endeavour House, Wrest Park, Silsoe MK45 4HS

YOUR HOME MAY BE REPOSSESSED IF YOU DO NOT KEEP UP REPAYMENTS ON YOUR MORTGAGE

We charge a fee of £495 for the straight forward mortgage application and up to £1,495 for the more complex ones.

Prior to application we will let you know when this becomes payable.

Please note we do not charge any fees upfront or for any initial advice.



SJtax^{LTD}

Taxation and Accounting Services

Professional friendly accountancy services

Fully qualified,
Free initial consultation,
competitive fees
Sole traders, Ltd companies,
bookkeeping, payroll,
CIS, VAT & Tax.

sally@sjtax.co.uk

01234 831997

07899 808592

E.T. Accountancy Services

Experienced Chartered Accountant and
Chartered Tax adviser based in Clophill
providing a full range of accountancy
and taxation services to businesses
and private individuals.

To arrange a free initial consultation
please telephone me on 01525 590465
or email emma@et-accountancy.co.uk

*Chartered Accountant and
Chartered Tax Adviser*



Emma Thoullass FCA CTA
www.et-accountancy.co.uk

01525 590465

Painter and Decorator

Call Chris : 07950714579



*do you want your
home brightening up?*

all interior & exterior work

no job too small!

free no obligation quote

*25 years experience
& fully insured*

facebook: @christopherthepainter
email: chris.minihane@btinternet.com

JK Garden and Landscape Services Ltd



We offer...



full landscaping service

patios

fencing

decking

new lawns

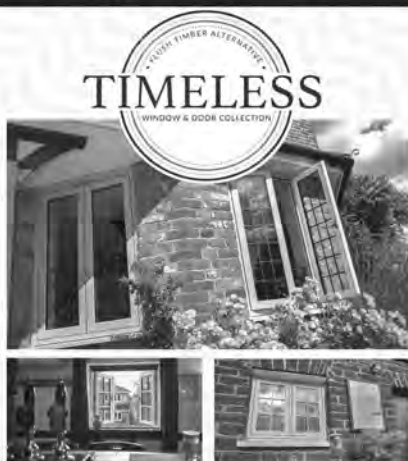
driveways

all garden maintenance

Contact us on **0791 2028254**
or at **jkgardening@hotmail.co.uk**

You can also find us on Facebook

Kings Windows



Available in a range of traditional colours
Choose classic joints to look like wood
Stunning handle options

TIMELESS FLUSH TIMBER ALTERNATIVE WINDOWS

as seen in *The Old Compasses & The Stone Jug*

*available exclusively from
Kings Windows*



01582 882 800
www.kingswindows.co.uk



TEACHING TALONS

THE ANIMAL AMBASSADORS

Multi-award winning,
Flitwick based, educational
animal encounters and mobile zoo

Perfect for schools, parties,
events, groups, care homes
& more!

www.teachingtalons.co.uk
info@teachingtalons.co.uk
 07718923708

Find us on Facebook, Instagram and Twitter!



ACCOUNTING SERVICES

Providing a Much Better service for Mid Beds since 2000

If you are **Self-employed** or a **Small Business** and require assistance with
Accounts, HMRC tax returns, VAT

we offer a total confidential service at competitive rates

Contact T: 01525 861087 M: 07714189994 E: mbaccounts@btinternet.com

Telephone
**01525
 860526**

The Stone Jug

A Free House

BACK STREET, CLOPHILL

A Proper Pub for Proper People

A family run village 'boozer' serving up great value, quality lunches that will fill you up without emptying your wallet! A pub is for 12 months of the year, 365 days and we're here for you on each and every one of them!

- 5 real ales, including 3 guest pumps that change frequently (see our Facebook page for details)
- selection of wines and Prosecco by the glass – or even better, by the bottle
- home-cooked lunches Tues-Sat, 12pm-2.30pm



REMEMBER OUR MOTTO

"A VISIT TO THE JUG IS BETTER THAN GOING TO A PUB"

CHEERS JOYCE, VIKKI & MARK

www.stonejug.co.uk

www.facebook.com/thestonejugclophill

Lively,
stimulating
sessions

Great songs,
Pop, musicals,
folk, classical,
world music
and more

Greensand Community Choir



Mondays 7.30pm - 9pm,
St. Mary's Church, High Street,
Clophill MK45 4BJ

No auditions,
no need to read
music

Come along and sing with your
local community choir, for adults of all
singing abilities

ISM
-2015-2016

e: greensandcommunitychoir@gmail.com

t: 07975 520085

Find us on

Veetway.com



Warm Property

Heating & Plumbing Specialists

We are Maunden based, fully insured, British Gas
trained and with more than 15 years' experience.
We offer Free No Obligation Quotes & Advice.



0%
INTEREST
FREE
CREDIT

12
YEAR
Guarantee*

- Boiler And Heating Installations
- Fires, Warm Air Units & Ovens
- Landlord Certificates
- Servicing And Repairs

safe
insured

WORCESTER
 BOSCH
Accredited Installer

07716 478794
01525 839342
www.warmprops.co.uk



Tel: 01525 861416
www.thebluecat.net

Find us on Facebook @thebluecatterry
or email us at enquiries@thebluecat.net

The Bluecat is a luxury cattery
set in the quiet area of Jacques Lane
in Clophill. With just 14 cat chalets,
we have time to fuss, pamper
and play with your cat to its heart's
content whilst in our care.
Please call for further information.

Misty Double Glazing?

KEEP YOUR WINDOW FRAMES...
... WE JUST REPLACE THE GLASS!

- UPVC • Aluminium • Or Wood

Because we replace just the glass the repair is a
Fraction of the cost of a complete replacement window.



mistydoubleglazing.co.uk
QUALITY GLAZING SERVICES
01525 876808

WE ALSO REPLACE BROKEN...
• Glass • Handles • Hinges & Locks
AND REPAIR...Patio Doors & Conservatories!

The Old Vicarage Curtain Co.



Luxury curtains and blinds
made to measure, beautiful
fabrics available if required.

Phone: 01767 315653

Email: info@vicaragecurtains.co.uk

Website: www.vicaragecurtains.co.uk

SILSOE DANCE SCHOOL



Classes in ...

Ballet

Tap

Jazz & Freestyle

Adult Tap

Classes held at Silsoe Village Hall

For more information or to book a free taster

session please contact: Katie 07949 156341

or email silsoedanceschool@gmail.com

Silsoe Dance School ... teaching children

and adults to dance since 1999

IDTA

International Dance Teachers Association member

the
café

Eastcotts Park,
Wallis Way,
Bedford, MK42 0PE
01234 266 366

Visit

www.peacockscafe.co.uk
for more details on our opening
hours and to view our full menu.

W&H PEACOCK
AUCTIONEERS & VALUERS

The Cafe at W&H Peacock is **OPEN**

View the salerooms for our upcoming auctions and
then relax with a coffee and a slice of cake.

Our unique cafe in Bedford Auction Centre with free wi-fi
comfortably seats over 100 customers. We serve cooked
breakfasts, paninis and sandwiches, light lunches and
snacks plus a range of hot and cold drinks.



LOCAL ALLOY WHEEL REFURBISHMENT



Tel:
01525
860069

Alloy Wheel Repairs

Diamond Cut Alloy Wheels Repaired On Site

Powder Coat Primers & Lacquers

Fast Turnaround Alloy Wheel Welding

Tyres At Competitive Prices

NEW for 2015 - 4 Wheel Alignment Service

www.mintalloys.co.uk

Welcome to Clophill St Mary's C of E Lower School and Nursery

We are a small, friendly, village Lower School, graded "Good" by Ofsted (2021), with close links to the local community.

We welcome children from 2 years to 9 years, supporting and nurturing each individual child AND teaching them about life-long Values.

Wrap around care available for all ages (breakfast and after-school care).

Acorn Nursery

Preschool provision in a beautiful bespoke building and outdoor space! Providing 30 hours free childcare entitlement with wrap-around care too!



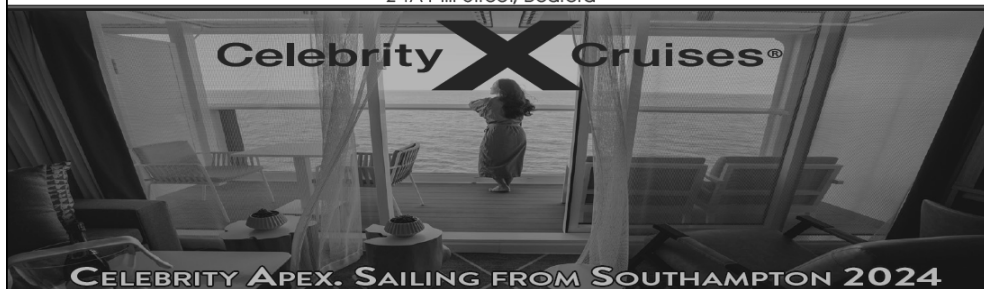
**EVERYONE is welcome at St. Mary's and you do not have to be a practicing Christian to attend our school.
We are first and foremost a Village School and Nursery—)**

To arrange a visit, please call: 01525 860206 or email: generaladmin@clophillstmaryschool.co.uk

For more information visit: www.clophillstmaryschool.co.uk



Select Travel Holidays
Home of Cruise Select
 24A Mill Street, Bedford



CELEBRITY APEX. SAILING FROM SOUTHAMPTON 2024

The revolutionary Edge® Series ship, *Celebrity Apex®*, will be sailing from Southampton for a full season starting May 2024.

Discover exciting itineraries that explore northern Europe and the Mediterranean, featuring visits to must-see places - no flying required!

ON SALE NOW -

Contact Bedford's leading cruise specialists to set sail today!



Contact us today!

01234 326778

sales@selecttravelholidays.co.uk

www.selecttravelholidays.co.uk



BOOK WITH CONFIDENCE
 ABTA & ATOL protected



ARCHITECTURAL DRAWINGS AND BUILDING DESIGN SERVICES

Professional Architectural design services provided for all types of private residential building projects including extensions, loft/garage conversions, garages and outbuildings through to new build dwellings with all necessary council approvals obtained.

For free estimates and advice contact Steve Coates on Flitwick 01525 862457 or 07960 215053.

stevecoates72@gmail.com

S & S Coates Surveying & Design, Unit 4 The Courtyard,
 r/o 13 High St, Clophill, MK45 4AB.



CBuild
 chartered building engineer



A L & G ABBOTT

Funeral Directors

~ Established 1832 ~

WITH YOU WHEN IT MATTERS MOST

An independent family business continuing to provide a caring & professional service to Bedford, Kempston & the surrounding villages.



- 24 Hour Personal Service
 - Bespoke Funerals
 - Private Chapels of rest
 - Green Burials
 - Home Arrangements
 - Civil Services Available
 - Bereavement Listening Service
- (Free to our families)



T: 01234 843222

www.abbott-funerals.co.uk

support@abbott-funerals.co.uk

150 BEDFORD ROAD, KEMPSTON, BEDFORDSHIRE, MK42 8BH



GODFREY Building Services

General Building, Plastering, Decorating, Tiling

Over 30 years' experience



SSIP Health & Safety

Paul Godfrey

Clophill, Bedfordshire

Contact M: 07973791137

Contact E: godfreybs@btinternet.com



Constructionline Member since 2008

Residential Conveyancing

Experienced Local Consultant Conveyancer

Michele Hosey

michelehoosey@photiades.com

01727 637833

Competitive legal costs, personable, efficient,
strong communication, faster turnaround times

**Contact me for a free no obligation estimate
or to discuss your specific requirements**

Recommended by Local Estate Agents

photiades solicitors
FRIENDLY EFFICIENCY

L U N A

FINANCIAL PLANNING

How to use your pension pot wisely

Do you have a plan?

Maybe you have several pension pots?

What about old employer's pension schemes?

We can help you make the right choice – either when you retire or to build your pot. You now have more choices than ever.

We make sure we take the time to understand your needs, goals and preferences before we make any recommendations.

For professional, friendly, financial advice contact us on:

01525 861803 | john@hills-howson.co.uk
Enterprise House, B52 Wrest Park, Silsoe MK45 4HS

Head Office | 4 North Road,
Pontywaun, Newport NP11 7GA



Auction Sales & Valuations

Valuation, collection and auction service
of individual items through to complete
property and commercial clearances.

Call for a free no obligation quote or
email **info@peacockauction.co.uk**

SALE ENTRIES NOW INVITED

Antique & Modern Furniture • Clocks • Books • Ceramics & Glassware • Pictures & Prints • Bicycles
Jewellery & Watches • Collectables • Garage Tools & Equipment • Household Electrical Items • Office
Furniture & Equipment • Retail Products & Stock • Vehicles • Horticultural & Commercial Equipment
Building Materials • Garden Furniture & Effects

www.peacockauction.co.uk



W&H PEACOCK
AUCTIONEERS & VALUERS
01234 266366



Eastcotts Park,
Wallis Way,
Bedford,
MK42 0PE

THE COMPUTER MAN



Got a problem with your computer and don't know what
to do? Suffering with a virus or spam?

Don't hesitate! Ring your local computer expert

Remote repairs or home visits
(Day, evening & weekend)

Lap top/desk top loan
(Free pick up & drop off in local area)

Comprehensive health check from £35 (**Special Offer** £35 - normally £40)
Refurbished fl at screen available from £15 • Refurbished base units available from £99



Contact Stephen Amos
07976 718567
the.computerman@ntlworld.com





Bathroom Vogue

EST.
1989

- Suppliers of traditional and modern equipment
- Working whirlpool & spa baths, power & steam shower systems on display
- Over 40 settings on display
- Complete installation service if required
- Personal friendly service from a family run business
- Wall and floor tiles
- Accessories
- Mirrors
- Bathroom furniture
- Heated towel rails
- Saunas
- Bathroom cabinets

SHEFFORD 01462 627002

www.bathroomvogue.com

Unit 4A, Shefford Industrial Park, St Francis Way, Shefford SG17 5DZ



GARDEN DOCTOR

Rob McLeod

Pruning Specialist

Professional, Local, Experienced

- * All tree and hedge work undertaken
- * High standard of work
- * Waste material recycled for compost
- * Free Quotations
- * Local, reliable service you can trust

Tel: 07763 239340 or 01525 861568

email: rob@gardendoctor.org.uk

www.gardendoctor.org.uk

Call the Garden Doctor and bring Good Health to your Garden



Hedging & Pruning
Shrubs & Fruit Trees
Tree Surgery & Removal
Fully certificated and insured



AMPTHILL & FLITWICK PHYSIOTHERAPY CLINIC

Tel: 01525 720882

www.chartered-physiotherapy.co.uk

Info@anfphysio.co.uk

1 Kings Road Flitwick MK45 1ED

Helping you get back on track

We offer the very best hands-on physiotherapy treatment

Neck/ Back/ Shoulder/Knee pain

Headaches/Migraines/Sciatica

Arthritis and all joint pain

Whiplash/RSI/Osteoporosis/Sports injuries

Vertigo and dizziness/Posture training and ergonomics

Long Covid

WE ARE PROVIDERS FOR MOST INSURANCE COMPANIES

We also offer complementary treatments:

Acupuncture/Chinese medicine

Clinical Psychology/Deep Tissue Massage



The Happy Place

On the Green beside the Post Office every Friday, 4.30-7.30pm

We are your local mobile fish and chip van, we have been parked on the green every Friday for the past 6 years. We serve only the highest quality produce, cooked fresh to order and served to you by our friendly staff.

Why don't you pop down and come and Try Our Fry!

To avoid waiting in the cold, give us a call to

place your order on: 07833 786108

A big thank you to all our customers who have loyally supported us over the past couple of years.

Chapman & Kirby Heating

Gas, Plumbing & Heating Installations

Gas Safe Registered

Boiler Servicing & Maintenance

Call us now on: 07831 132308



Email: info@chapmanandkirbyheating.co.uk

11 Lyall Close, Flitwick, Beds., MK45 1JB



NEVILLE FUNERALS

We take care of the details, so you can say
goodbye the way you want to.

NEVILLE. Because there is a difference.

AMPTHILL

The Old Church, Flitwick Road MK45 2NT

t: 01525 406132

e: amphill@nevillefuneralservice.com

SHEFFORD

24 Clifton Road SG17 5AE

t: 01462 813258

e: shefford@nevillefuneralservice.com

www.nevillefuneralservice.com





FROM JUST
£7.50
PER MONTH*

*Based on 6 annual treatments
with a lawn size up to 400sq
m when paying by
Direct Debit

HELP YOUR LAWN TO THRIVE, NOT JUST SURVIVE

Over the last 35 years our love for lawns has continued to grow. We combine our passion and enthusiasm with innovative technology and dedicated customer service as we continue to revolutionise UK Lawn Care. Our ground-breaking Lawn Treatment Programmes keep your grass looking its best all year round, ensuring your lawn receives the love and attention it deserves.

Join our nation of Lawn Lovers

Email: bedford@greenthumb.co.uk

Call: 01234 709345

Visit: greenthumb.co.uk

GreenThumb
LAWN TREATMENT SERVICE 

Baths, Toilets &
Showers
Sinks and Taps
Guttering
Leaks and Burst Pipes
Drainage
Handyman jobs also



beta plumbing

Silsoe based
No call out fee – free estimates
Fully insured and guaranteed
No job too small
07720 723653 01525 864859
info@betaplumbing.co.uk
www.betaplumbing.co.uk

TIM DOWNING

Washing Machines Dishwashers Dryers Electric Ovens

Repairs Servicing Sales



Tel: Tim on Clophill 860148
Mobile: 07969 545 276



A local family business offering a quality service at a competitive price

A member of the White Goods Trade Association
Fully Insured Est. 1981

Root 'n Branch

Your Local Friendly & Reliable Gardener

All aspects of Garden Maintenance undertaken
• PRUNING • MOWING • WEEDING • PLANTING • HEDGING

Southfields, Shefford
email: whooley@hotmail.co.uk

Tel: 07771 537385

Public Liability
Insured



THE CONIFERS
— CANINE HOTEL —

LUXURY
ACCOMMODATION
HOLISTIC FOOD SHOP

01525 860339

www.the-conifers.co.uk



STUART DREW ELECTRICAL SERVICES

PART P CERTIFIED
MEMBER OF THE ECA
QUALIFIED TO 18TH EDITION

Consumer unit upgrades (fuse box). EV charging points. Additional lights and sockets.
Garden power. Electric showers fitted. Fault finding and electrical safety certification.

For a professional, courteous service with free estimates & all work guaranteed

29 Lincoln Way
Harlington
Beds
LU5 6NG

Fully qualified & insured
Over 30 years experience

Telephone
01525 875965
07941 812662

Take out an annual ad in Clophill *SPOTLIGHT*

Black & White per year

This is one-sixth £58 H 31 x W 126 mm

Please email our Advertising Manager
ads@clophillspotlight.co.uk

BURGLAR ALARMS

New Alarms Fitted or Upgrade Existing Alarms

BURGLAR ALARMS

We fit New Alarms - Wired or Wireless Systems

We can service and maintain your existing alarm

CCTV

We fit high quality systems to maximise your security.

Access your CCTV via the internet or mobile.

DOOR ENTRY

We fit a range of quality video and audio intercoms to suit your needs.

We are a family run business with over 35 years experience in home security and crime prevention.



www.maximumsecuritysystems.co.uk

Contact:

01582 864138 / 07746 111520

For a free quote and consultation



NEWBURY FARM PLANTS

WIDE SELECTION OF BEAUTIFUL GARDEN PLANTS

OPENING HOURS - WED - SAT 9 - 5 & SUN 10 - 4

NEWBURY FARM AMPHILL ROAD SILSOE MK45 4HB

TEL: 01525 860048

YOUR LOCAL INDEPENDENT NURSERY



Hire Clophill Village Hall



Wedding Reception
Birthdays & Special Occasions
Dances and Discos
Club & Community Meetings & Activities

Phone: 07821 643 936

Mail: Clophill.villagehall@gmail.com Web: www.clophillvillagehall.co.uk

ROGER STOREY

YOUR LOCAL PAINTER AND DECORATOR

Friendly and Reliable Service

Many Years Experience

Please phone: **01525 861253** or **07800 777615**

ANDREW BAKER WINDOWS

9 SHEFFORD ROAD
CLOPHILL BEDS
MK45 4BT

SPECIALISING IN UPVC WINDOWS,
DOORS, CONSERVATORIES,
FASCIA, SOFFITS, GUTTERS AND
CLADDING. ALSO AVAILABLE FOR CARPENTRY
WORK. NO JOB TOO SMALL OR LARGE.

20 Years experience.
Free local quotes.

FENSA

Fensa Registered
FIVE YEAR GUARANTEE

Contact Andrew: 01525862804 / 07825017855

Email: abakerwindows@gmail.com



WOBURN COUNTRY FOODS

THE GOURMET BUTCHER

HAYNES WEST END - WOBURN SANDS

THE FARM SHOP, HAYNES WEST END

WEST END FARM, HAYNES WEST END, MK45 3RA
BUTCHERS HOTLINE - 07845141969

FROSTS FOODHALL WOBURN SANDS

NEWPORT ROAD, WOBURN SANDS, MK17 8UE
BUTCHERS HOTLINE - 07754215335



ORDER ONLINE

WOBURNCOUNTRYFOODS.COM

*Family Friendly, warm and
welcoming golf club where
everyone is welcome*



Cainhoe Wood
GOLF CLUB

Brand New Seasonal Menu in our friendly clubhouse
which is welcome to all!



New Sunday Menu
perfect for all the family!



Sky Sports showing all the
big sporting events!

JOL Golf Academy - individual and group
lessons available from Beginner to
Advanced!

Winter Prices: £17.50 Midweek
£22.50 Weekend for 18 holes
on our beautiful Manor Course



www.cainhoewoodgolf.co.uk



01525 860800

Advertisers index

Architectural Services

S&S Coates Surveying & Design 35

Auctioneers & valuers

W&H Peacock 38

Bathroom Services

Bathroom Vogue 39

Builders & Carpenters

Godfrey Building Services 36

PURE joinery solutions 28

Stuart Benson Building Projects IFC

Dance

Silsoe Dance School 33

Car Services/Repairs

A&F Motors Ltd IFC

Mint Alloys 34

TC Coomber Car Services BC

Chimney Sweep

Poppins Chimney Sweep IBC

Choirs

Greensand Community Choir 32

Cleaning Services

Daisy Cooper 28

Computer Services

The Computer Man 38

Electrical Services

Stuart Drew Electrical Services 43

Financial Services

ET Accounting Services 29

LUNA Financial Planning 37

MB Accounting Services 31

SJ Tax & Accounting Services 29

The Mortgage Expert 29

Food & Refreshments

The Happy Plaice 40

Café at W&H Peacock 33

Woburn Country Foods 46

Funeral Services

AL&G Abbot, Funeral Directors 36

Neville Funeral Service 41

Garden

Garden Doctor 39

Green Thumb Lawn Treatment 42

JK Garden and Landscape Services 30

Newbury Farm Plants 44

Root 'n Branch 43

Health & Beauty

Amphill & Flitwick Physiotherapy 40

Tammy's Talons 28

Be Yoga Fit 25

Silsoe Dental Clinic 27

Hub Care Support 24

Tribe Strength Gym 26

Home Improvements

Christopher The Painter 30

David James Kitchens 24

Roger Storey - Painter & Decorator 45

The Old Vicarage Curtain Co. 33

Legal

Photiades Solicitors 37

Nursery Schools

Clophill PreSchool BC

Clophill St Mary's C of E 34

Acorn Lower School and Nursery 34

Pet & Animal Services

The Conifers Canine Hotel 43

Teaching Talons 31

The Bluecat Luxury Cattery 32

Amphill Veterinary Care 25

Stray Cat Rescue 28

Plumbing & Drainage Services

Beta Plumbing 42

Chapman & Kirby Heating 40

Warm Property Services 32

Print Services

Fidelity Design & print IFC

Public Houses

The Stone Jug 31

Repair Services

Tim Downing Repair Services 42

Sport

Cainhoe Wood Golf Club 47

Security Services

Maximum Security Systems 44

Travel Services

Select Travel Holidays 35

Village Hall

Clophill Village Hall 45

Windows/Replacement

Andrew Baker Windows 45

AW Windows IBC

Kings Windows 30

Misty Double Glazing 32

IFC = Inside Front Cover IBC = Inside Back Cover BC = Back Cover

Love reading Spotlight?

Don't forget to mention us when you use a business that advertises in this magazine!

Clophill Preschool

We are a unique outdoor setting based in the rural grounds of Clophill Village Hall welcoming children from the age of 2 and offering a bespoke SEND provision.

Our passionate and experienced staff nurture every child and broaden their perspective, enrich their knowledge and spark the magic of wonder through a curriculum based in nature.



Call or email to find out more

07765 887868 or 07936 006381
clophillpreschool@gmail.com
www.clophillpreschool.co.uk



Find us on
Facebook



MOT'S CLASS 4/5L/7
CAR SERVICING & REPAIR
TYRES & EXHAUSTS
AIR CONDITIONING
DIAGNOSTIC CODE READING

**Collection
& Delivery**
SERVICE AVAILABLE
Please ask

AMPTHILL
01525 406330

UNIT F, AMPTHILL INDUSTRIAL ESTATE, STATION ROAD, AMPTHILL, MK45 2QY