

Vol 47 | No.7

FREE

# CLOPHILL SPOTLIGHT

SEPTEMBER 2024



**LOVE YOUR  
LOCAL NEWS**



*Shout  
about  
your  
business!*

- Branding and design
- Business stationery
- Leaflets & brochures
- Posters & banners
- Labels & packaging
- Branded workwear
- Plan scan, copy & print
- Photo printing

*Same, next & 3 day services  
Order online - collect in-store*

**www.fidelityprint.co.uk**

01234 907907 | [quotes@fidelityprint.co.uk](mailto:quotes@fidelityprint.co.uk)  
Telford Way, Bedford MK42 0PQ Mon-Fri 10-4



D. Andrews  
P. Fleckney



**MOTORS LTD**

**Tel: (01525) 404919**

**89 Oliver Street, Ampthill, Bedfordshire MK45 2SA**

**CAR AND COMMERCIAL VEHICLES  
ALSO CLASSIC & AMERICAN CARS**

**SERVICING – REPAIRS – BREAKDOWN  
SPRAYING – M.O.T.**



### **Stuart Benson Building Projects**

**Design, Build and Maintenance including Interior Refurbishments,  
Kitchen / Bathroom fitting, Tiling, Flooring, Skirting boards, Doors  
Garage conversions. Exterior Decking, Patios, Driveways  
Garden Offices/ Sheds**

**Tel: 07946 579862 or 01525 839878**

**Email: [benson.stuart@gmail.com](mailto:benson.stuart@gmail.com)**



## A word from the Editor...

Welcome to the September issue of Spotlight

*Dear Reader,*

**We are back!!** With a packed issue this month.

The schools returned from the summer holidays this week; and I have a message from the Clophill United Charities trustees. ***'At the start of the new school term there might be unforeseen expenses for parents of children in school. Where these require extra financial assistance, we would welcome applications for help.'*** For more information and how to apply in complete confidence, turn to page 22.

This weekend the 7<sup>th</sup>-8<sup>th</sup> September is **St. Mary's Church Celebration Exhibition**, celebrating an amazing 175<sup>th</sup> anniversary of the dedication of the church; the poster on page 9 has more details.

Then in October we have our **Grand Jumble sale** in the Village Hall in aid of the **Sue Ryder St. John's hospice** in Moggerhanger, see page 8.

Finally, we have 3 new Advertisers this month; if you need help with your PC or laptop, your dog needs a bit of grooming or Pilates is your thing – it's all here in Spotlight.

**Best wishes,  
Elaine**



## The magazine staff

EDITOR	Elaine Jones	07918 975823
	editorial@clophillspotlight.co.uk	
ADVERTISING MANAGER	ads@clophillspotlight.co.uk	
DESIGN MANAGER	Colin Watt	
DISTRIBUTION MANAGER	Toni Elston	07979 643047
	Paul Leckie	
TREASURER	Jon Bates	07725 068828

**Deadline for articles is 20th of the month**

You can also read Spotlight online

**[www.clophillspotlight.co.uk](http://www.clophillspotlight.co.uk)**

# Come into the Garden

*With Kate Gardner*



Here are five easy garden jobs for September to make sure your garden is full of flowers and to give it a late summer boost! Summer may be slowly departing but many plants will keep flowering until the frosts if they are well looked after.

One of the quickest ways to add instant colour to your garden is to look out for some colourful bargains in the garden centre, to give your garden some late summer impact. Summer bedding plants are being sold off cheaply to make way for autumnal plants but they can still provide colour for at least another two months. Snap up tender fuchsias, pelargoniums (often sold as 'geraniums'), and osteospermums and use them to fill gaps in pots or around the patio. Plant up areas close to your outdoor eating and seating areas, so that these are the most colourful parts of the garden as you enjoy the end of the summer.

Trailing petunias, fuchsias and ivies can get too big for their space in containers and pots so trim back leaves to avoid your container displays looking top heavy or lop sided. It's also a good idea to trim back any plants that have crowded out other plants in pots, so that you can see every plant in the display. Don't forget to make sure you keep dead-heading all your plants to encourage more flowers to follow the old ones.

If you have been growing roses in your garden they may well have some old, tired looking leaves now. Get rid of yellow and diseased leaves and your plants will look better instantly. They are so easy to remove, just pull down on the leaf stem and it will easily break away from the main stem of the plant. Pull off yellowing and diseased leaves and snip off any that are surrounded by healthy leaves. Put them in the bin, then stand back and admire a healthy lush green plant that can still have more flowers to come.

Water and feed summer flowering plants in pots to get as many blooms from them as possible. It may be September but summer displays in pots can keep looking good up until the first frosts. Plants such as pelargoniums, nemesia, roses and fuchsias have lots more flowers in them if you give them a bit of TLC. Check the compost in the pots by pushing your finger into it. If the compost is dry all the way down, then it needs a good soak. Add a general fertiliser such as liquid seaweed to your watering can before watering, to give your plants a late boost of nutrients.

Sow hardy annuals such as calendula, larkspur, nigella and honesty direct into the soil in the garden now to create a mixed display for next year. Mix together all the seeds with some sand and sow them over a bare patch of soil to create a riot of colour early next summer. Make sure the soil is weed free before sowing and rake it level. Sow the seeds and then gently rake them into the soil, before watering well. Label the area after sowing so you don't forget about them.

Now is a good time to add in a selection of late-flowering perennials, bulbs and shrubs into your borders. Some of the most popular plants for late colour include asters, sedums and Japanese anemones. Rudbeckias with their bright yellow and black flowers are great for adding impact to sunny areas. Plant autumn-flowering cyclamen beneath shrubs or trees from now until October alongside ferns. The flowers can be pink or white and appear before the leaves, which are heart shaped and marbled with silver. Over time these will spread and produce an amazing carpet of colour during the autumn months.

***Happy Gardening***

## **Amphill Health Walks**

Fortnightly walks in and around Amphill

### **Short led walks, all welcome**

Amphill Health Walks are for anyone who wants to get more active. They are about **3 miles long** and last about an hour and a quarter. Everyone walks at their own brisk pace, with a backmarker to make sure no one is left behind. There may be some hills and in bad weather there might also be some mud but we do our best to minimise this!



**The walks are all free and start at 10am.**

**Please note** that dogs are not allowed on the walks and ensure you wear suitable footwear.

**13th September Rufus Centre Flitwick MK45 1AH**

**27th September Archers Rest Car Park Great Denham MK40 4SQ**

**11th October Priory Country Park Bedford MK41 9DJ**

**25th October Forest Centre Marston Moretaine MK43 0PR**

(NB: There is a £2 charge for parking up to 3 hours)

After the walks we usually find a cafe or similar for refreshments.

We are a very friendly group so why not come along to one of our walks and see if it's for you?

For more information contact Mike Fayers on [mikef@bedsrcc.org.uk](mailto:mikef@bedsrcc.org.uk)  
or 01234 832619

## Reflections – Clophill in October 1979 - Voices from the past.

Continuing our series looking back at previous issues of Spotlight and Clophill Village life..... *By Julie Benson.*

Having looked into the August/September 1979's Spotlight in July, I will now delve into October's edition – and there's not a tug-of-war team in sight - although on the cover of this one is "Pearly King presenting awards to tug-of-war competitors at last year's fete". (How about that!)



Looking inside the covers, the **Village Hall Management Committee** reports that they will be looking to extend the hall's S-E corner to relieve the "overcrowded storage space inside". (Good news) - roof repairs were made to the toilets and changing rooms - and fund-raising events over the coming months were planned – a senior disco, a Barn Dance and New Year's Eve dance as well as a new float for Christmas and next year's fete.

Talking of fetes, **St. Mary's Church** held theirs in the school grounds and "just over £200 was raised from the numerous stalls and side-shows". The 'Star Riders' Motor Cycle exhibition was a new attraction, while (guess what) "the Tug-of-War proved another popular one" where "Five teams from the local hostelrys competed for a barrel of beer, the winners being the Flying Horse". John Eaton and David Biggs were thanked for helping with the organisation.

There was a 'knit-in' by 30 ladies at **Beverley Court** organised by Mrs Susan Filsell and Betty Hampson who also won the competition with Mrs Grummitt being the runner-up.

**The Guides** had a great week's camp at Bromham and the **WI** had a busy couple of months with a "well attended" fund-raising coffee evening at Mrs S. Myers house and a demonstration of the correct way to apply make-up by Mrs Barratt in September; where Mrs Drake acted as model. Sally Myers was the secretary of the A.C.W.W (Associated Country Women of the World) Committee and its flag was received by Mrs. C. Cranswick and Mrs S. Brooks at the boundary with Maulden and handed on to Campton, the ceremonies being filmed by Mrs B. Thompson.

The **Methodist Church** celebrated Harvest with two services on Sunday 9th September and a Harvest Supper and an auction of produce the following Tuesday evening. (These were great social events – and good fundraisers too.)

**The Friends of the Cheshire Home** took the residents "for a trip around the beautiful gardens of Wrest Park" and held their Annual Fete at Hunting's "in splendid weather".



## Reflections – Clophill in June 1979 (continued ...)

Not only was Sally Myers very involved with the WI, she was also the Brownie Guider and she gave a great report of Brownie activities. This one concerned “the District Brownie Shield competition which had an International theme this year. Each Six had chosen a country – Imps West Germany, Elves & Gnomes France and Sprites Finland”. One Brownie from each six was dressed in her country’s national costume; the Six sang a relevant song and displayed relevant items on ‘overflowing’ tables. Mrs Gordon judged the displays. The overall winners were the Sprites – Sarah Eaton, Melanie Gibbs, Charlotte Langdon, Hazel Brooks, Donna Beatty and Karen Porter who then took their display to compete against other Packs in the District at Ampthill – and won! (Brilliant – there was strong competition.)

The **October birthday winner** of £1 gift token was Stephen Bodiley; the **Darby & Joan club** enjoyed a trip to Sturmer in Suffolk – fish and chips and a lovely tea – while “The line of the **Silsoe bypass** has been marked out and heavy earthmovers are currently busy removing top soil”. The **Ampthill bypass** – was put back to the 1981-2 programme.

Interestingly, there is a ‘**Clophill Events in 1937**’, taken from a church magazine which covered the area around Ampthill and priced at 3d; one of the items reads “the children of the village sent flowers and 265 eggs to the patients of Bedford Hospital, and the Matron wrote a letter of thanks”. How lovely!

---

## *A BIG thank you from Cora:*

### **For Alzheimer's Research UK for a cure at Cambridge University.**

I would like to thank you all again for helping me to raise £1,231.21; such a wonderful amount of money for the research.

I was so pleased that so many people came along to support me.

Alzheimer's is one of many devastating illnesses which make life so very hard for people and for families, it gives me great pleasure to know there are dedicated individuals like yourselves that help me raise so much money to find a cure.

I must thank, from the bottom of my heart, everyone who donated to this incredible sum of money raised towards a cure.

Thanking you again; it is much appreciated.

**Cora Sheppard**

**ALZHEIMER'S  
RESEARCH UK** **FOR A  
CURE**

# Tibbs Dementia Foundation STRIDE OUT FOR MEMORY

PRIORY COUNTRY PARK BEDFORD  
SATURDAY 28TH SEPTEMBER 2024

REGISTRATION 10.30AM

WARM UP 11AM

WALK 11.30AM

£10 per adult - children walk for free!

Register on the day.

All proceeds to Tibbs Dementia Foundation:

[www.tibbsdementia.co.uk](http://www.tibbsdementia.co.uk)

Entertainment/ tombola /  
information stands/  
refreshments available.  
Bring a picnic and stay and  
relax with us afterwards.

Come and join us for our  
annual community walk as we  
Stride together to build a  
better world for families  
affected by dementia.



For more details:

Email: [contact@tibbsdementia.co.uk](mailto:contact@tibbsdementia.co.uk)

Call: 01234 210993

Registered Charity: 1166596





# Clophill Parish Council

## Ralph Brough - Chairman's Award



The Chairman was delighted to announce that after unanimous support, Ralph Brough would be handed the Chairmans Award for his long and outstanding service to Clophill. This is not only to recognise his contribution to the Parish Council but also the Church and many individuals and other organisations upon which he has had such a positive influence. In the coming months the PC will recognise others who have also selflessly given time for the good of Clophill residents.

## Your Village Hall Needs You!

You may not realise but the fabulous facility that is the Village Hall is owned by the village and operated by a dedicated team of volunteers who have done so for many years. Without this team of volunteers, the village hall will simply not function or be available. The current committee has been in post for many years and some of those individuals wish to hand over the baton to the next custodians.

### ***\* IS THIS AN OPPORTUNITY FOR YOU TO GIVE BACK TO THE COMMUNITY? \****

If you could spare a few hours a week for the greater good; in the first instance contact the current Chair, Steve Langhorn on [steve.langhorn@gmail.com](mailto:steve.langhorn@gmail.com) who will set up a call to discuss your interest in more detail.

## Invasive Weeds:

Please look for and destroy when practical no native and invasive weeds including Ragwort which seems to have exploded all over this year and Himalayan Balsam (picture) which spreads particularly fast once established and can take over domestic species.



## Neighbourhood Plan:

It is important to have a plan (alongside CBC Local Plan) specific to Clophill to be considered against future planning applications. The PC is happy to lead the resurrection of this project and has a small working party but would be keen to hear from anyone who would be happy to help with.....

- IT skills (e-questionnaire issue and collation of results on excel)
- Presentation skills
- Researching the village / existing sources of information
- Proof reading
- Other tasks yet to be identified.

Please contact [Clerk@clophill-pc.gov.uk](mailto:Clerk@clophill-pc.gov.uk) with your details if you can help.

# Clophill Parish Council

## New Parish Clerk

We were sad to see Heather Myott step down as Clerk but delighted to welcome new Clerk Tim Hill. Many thanks to Heather for a job very well done and a comprehensive handover! Good luck Tim in the new role.



## Planning Applications

**CB/TRE/24/00288** 2 Hawthorne Close

**Proposal:** Works to trees protected by a Tree Preservation Order MB/03/1994: thin by 20% and remove epicormic growth to maintain shape and balance to Oak Trees (1&2) and Ash Tree (1). **NO COMMENT**

**CB/TCA/24/00272** 42 High Street

**Proposal:** Works to trees within a Conservation Area: T1 Maple prune to maintain current height and spread. **NO COMMENT**

**Appeal Notice APP/P0240/W/24/3342838** Sand Pit, Great Lane

Description of development: Erection of a self-build dwelling  
Application reference: CB/23/02820/FULL. **NO COMMENT**

**The next meeting will be held on 22nd October, 7:45pm  
at the Methodist Church.**

## Grand Jumble Sale in aid of Sue Ryder St John's Hospice at Moggerhanger



**7pm Friday 11th October 2024 - Clophill Village Hall**

Admission 50p per adult. Children are free.

Refreshments will be served.

All proceeds will be donated directly to the Hospice in Moggerhanger.

We'd greatly appreciate donations ahead of the event if you are not able to store them. Contact [Richard.sue.pearson@gmail.com](mailto:Richard.sue.pearson@gmail.com) or ring 861110.

**Look forward to seeing you there!!**

# St Mary's Church, Clophill



## A Celebration Exhibition

A Festival to mark the 175th Anniversary  
of the dedication of the New Church

What do you know about the church?

Why was it built?

Who paid for it?

Who was John Mendham?

To find out, come to an Exhibition on :-

7<sup>th</sup> and 8<sup>th</sup> September

12 noon – 4pm each day

There will be **Exhibits** and **Artefacts** showing the history of the Church enhanced by **Flowers** arranged by Members of **Clophill and District Flower Club**

Admission free – donations welcome

Delicious refreshments served in the Church

# Claphill Preschool News

**Hello everyone,**

Welcome to a new academic year. We had a very busy and fun end to our last term with our leaver's graduation event and end of term party. It was wonderful to have everyone gathered to say goodbye and we will miss all the families that have been with us so long, they left us with such kind words and fond memories.



We have also been completely overwhelmed this summer at our Stay & Play sessions, they have been busier than ever and we have had the opportunity to meet so many new families as well as to get to know those who are joining us. We would like to extend special thanks to our staff who volunteer for these sessions, the value of the understanding and support they offer to parents cannot be overestimated. We also held an extra

Open Day in the holidays due to high demand and this was also a very busy session and we start our year with another long waiting list.

We are a setting that is always seeking to improve and deliver the highest level of care and support to our children and families, last term this came in the form of our new Parent and Toddler Group. It has been such a huge success that, at the request of the parents, we are extending the sessions to start from 9:30 every week. As a busy setting, running a successful group like this can be a lot of work but we are very fortunate to have a host of parents, many of whom we have known for sometime but some who are new to us, who have volunteered to help run the group and are full of exciting ideas and plans for this coming year. Our first session back is on Friday 6th September at 9:30.

We would like to take this opportunity to thank Angela and Ralph from the village for their very generous donations to preschool. It means a huge amount to us that you value our contribution to the next generation, thank you!

This year holds more developments: from a new greenhouse to getting our children out and about round the village more than ever. Over recent years we have built up strong bonds with local people and organisations and we are taking the opportunity to enhance the children's social experience and awareness more than ever by increasing these experiences. We wouldn't be able to do these activities without the kindness and patience of the community; from the staff at the Coop who always welcome our children into the shop as they learn about the complexities of money exchange to the bus driver who was happy to help our group onto his bus for the ride down the High Street.

# Clophill Preschool News cont...

We continue to collaborate with the Sophie and the Fledglings as well as Silas the Vicar, Carolyn and the Flower Club, Rosemary and Adrienne and Mary who loves to volunteer her time with the children.

We continue to make connections across the village and beyond by exploring the village or inviting visitors to us, as a result, our community continues to grow. Please do stop and say hello if you see us out and about!



---

## ST. MARY'S CHURCH NEWS

Unusually the summer period has been rather eventful. Following the very busy and successful Open Gardens weekend, the fund-raising team set to work to plan a picnic party in the churchyard on July 14th. This was partly a planned fund raiser and partly a chance to say our goodbyes to our Rector Lynda, who has started her well-earned retirement. Again, we were lucky with the weather and were able to sit out to enjoy our pre-ordered picnic boxes. We were then entertained by a lively performance by the combined Rock Choirs. Finally, we presented Lynda with her farewell gifts; a cheque from members of the congregation and a very large plant for her new garden. Lynda is a keen gardener and plans to spend her cheque on garden furniture.



Many people have asked about our next rector, but the wheels of the Church of England grind exceeding slow. We are in a period of vacancy while the right person is found for our Benefice. At a meeting with the local hierarchy, we were advised to wait a few weeks before advertising while a profile is prepared and until there will be a number of curates ending their curacy and seeking their first parish. If the right person (parson!) is found for our 2 parishes, we could have him/her in place by about Easter. Until then we are grateful to Eric Shegog for holding the fort.

We have also been very busy during August preparing our Anniversary Festival over the weekend September 7th and 8th with a display on the history of the church, enhanced by flower arrangements by Clophill and District Flower Club. There will also be a Festival Service of Sung Communion at which the Bishop of Bedford will preach.

**Greensands Community**  
**Methodist Church**  
**Clophill Hub**

**Coffee and Croissants**  
**Saturday 14th September**  
**10am to 12 noon**



Also to be held on  
Saturday 12th October  
Saturday 10th November

ALL WELCOME

## Parish Registers for September

### 1824

#### **Baptisms**

- 05 (Blot) d of John and Sarah Lobb (?).  
(Blot) child of Thomas and Sarah Wilshire.
- 19 William, s of Thomas and Sarah Mandlin.  
George, s of Richard and Elizabeth Matthews.
- 22 Thomas, s of Robert and Ann Cunningham.
- 26 Caroline, d of Thomas and Mary Harris.

**No marriages or burials recorded.**

### 1874

#### **Baptisms**

- 04 Arthur Albert, s of Joseph and Harriet Daniels.
- 27 James, William and George sons of James and Rhoda Sinfield.  
Edith, d of William and (?) Elizabeth Heathfield.  
Others too faint to decipher.

#### **Marriage**

- 10 Walter Webb, 22 to Mary Ann Ashby, 22.

#### **Burials**

- 12 Annie Wood, 10 wks.
- 17 Albert Daniels, 8 mnths (see baptism above).
- 18 John Maddams, 55.

### 1924

**No baptisms or marriages recorded.**

#### **Burials**

- 11 Isaac Woodcraft, 83.
- 20 Herbert David Manning, 64.  
Thomas Henry Ashby, 74.
- 24 Eliza Harbour (?), 69.
- 29 William Harwood, 82.

### 1974

**No registers recorded.**

## ST. MARY'S CHURCH REGISTERS AUGUST 2024

#### **Marriage**

- 10 Paul White to Sarah Vickers.

#### **Burial of Ashes**

- 22 John Ellis of Cardington (formerly Clophill), 84.

**Parish registers** were formally introduced in England and Wales on 5 September 1538 shortly after the formal split with Rome in 1534, when **Thomas Cromwell**, chief minister to **Henry VIII**, acting as his Vicar General, issued an injunction requiring that in each parish of the Church of England registers of all baptisms, marriages, and burials be kept.





## Clophill and District Flower Club

[www.clophillflowerclub.com](http://www.clophillflowerclub.com)

*invite you to join them for*



# A Dabble Evening

a practical social evening with a difference



Please just bring your scissors  
we will provide everything else

Join us for this social evening  
with the usual refreshments –  
and plenty of time to chat too!

## Thursday 3<sup>rd</sup> October 2024

6.45 for 7.30pm start

### Clophill Village Hall



Visitors always very welcome. Visitors fee £7 per meeting including refreshments. For further information, please check our website or call Gillian on 07960 662334



August and early September at Fledglings has been a whirlwind of activity and discovery! Our new children have settled in exceptionally well. Many of them have come up from Clophill Preschool, and thanks to our connected approach, they already feel right at home and it feels as though they have always been part of the Fledglings family.



Entrepreneurship is the word of the month as the children have rolled up their sleeves to launch their own small businesses, gaining hands-on experience in managing finances and securing capital. This real-world practice in business skills not only sparks their creativity but also equips them with essential life skills that will serve them well into the future.

In nature studies, the children have immersed themselves in observing British wildlife as the summer ends and autumn begins to unfold. They have been harvesting the produce from the allotment and using it in their cooking sessions. The older children are also beginning to cook lunch for

the setting once a week, using the fresh produce they have grown. This new responsibility enhances their practical cooking skills and fosters a great sense of contribution and teamwork.

We are eagerly anticipating the restart of our intergenerational crafting sessions with Beverley Court residents later in the month. These visits have been heart-warming successes in the past, fostering connections across generations and enhancing social skills and empathy. We look forward to resuming these collaborative projects soon.

As we move into autumn, we are excited to continue to redevelop our setting; the children have been actively involved in the design process. As ever, we are following their lead on shaping a learning environment that is both functional and inspiring.



# WARDEN ABBEY VINEYARD

## Open Day and Wine Sale



**Sunday 8th  
September 2024**

**11am - 4pm**



**Local Artisan  
Food and  
Craft Stalls**

**Petting  
Farm**

**Wine Tasting  
- try before  
you buy**

**Free Self-  
Guided Tours**

**Refreshments and  
Food Vendors**

**Guided  
Vineyard Tours**

**Entry:**

**Adults £4 online, £5 on the day  
Under 16s go free  
Guided tours £5**



***Advance booking for entry  
and tours is recommended***

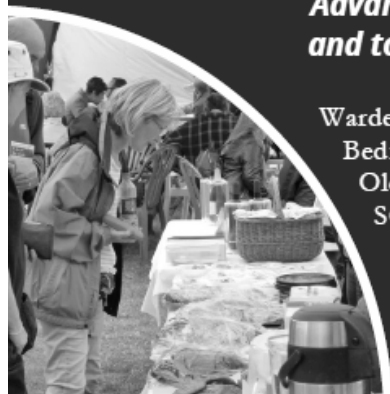
**Warden Abbey Vineyard  
Bedford Road  
Old Warden  
SG18 9LS**

**[info@wardenvineyard.org.uk](mailto:info@wardenvineyard.org.uk)**

**[///cyclones.retailing.fruits  
wardenvineyard.org.uk](http://cyclones.retailing.fruits.wardenvineyard.org.uk)**



**Pre-Book**



## Nature Reserve progress continues



The Greensand Trust is committed to delivering a fantastic Nature Reserve for everyone to enjoy. We have made considerable progress in the short period of time that we have owned the land, but we still have some work to do to protect the site's wildlife, habitats and the Cainhoe Castle Scheduled Monument, ensure future visitor safety, create facilities to support this, and raise funds to make it all happen.

We are working hard to facilitate public access as soon as we possibly can, and we ask for your continued patience and support. Please support our appeal for funds on our website: [www.greensandtrust.org/Appeal/clophill-lakes](http://www.greensandtrust.org/Appeal/clophill-lakes)

## Can you help us tell the story of Clophill Lakes?

We are looking to gather as much information on the site as we can to help us to learn more about it and the stories that local people have, informing the interpretation we'll have on site and on our website.

Clophill Lakes has a rich history, from the medieval Cainhoe Castle and later moated site to the Fuller's Earth quarry, always being an important part of the village. As we are recording the history of the site, we want to make sure local stories are captured too: those that worked, played, and appreciated the site. This might be what the site looked like before the quarrying, working or seeing the quarrying, and its subsequent restoration.

If you have any memories or stories we'd love to hear from you. We are also on the hunt for any photographs of the site, particularly from when it was a quarry or being restored.

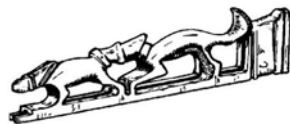
If you wish to take part please email: [daniel.bowles@greensandtrust.org](mailto:daniel.bowles@greensandtrust.org) or call 01234 743666.

We have added a page to the Clophill Lakes website on the history of Cainhoe Castle – take a look here: [www.greensandtrust.org/history-of-clophill-lakes](http://www.greensandtrust.org/history-of-clophill-lakes)

## Woodland Craft Day

Come to The Working Woodlands Centre at the entrance to Maulden Wood on **Sunday 13th October 10am – 4pm** where we'll be celebrating traditional and contemporary woodland crafts. You can watch experts and have a go yourself! It's free to attend- just turn up! For more details visit: [www.greensandtrust.org/Event/woodland-crafts-day-2024](http://www.greensandtrust.org/Event/woodland-crafts-day-2024)





**Monday 7th October 2024**

## **Tales from Bedfordshire Churches – The Admiral, The Rector and Long John Silver**



**All Saints, Little Staughton**



**St Leonards, Old Warden**

The tales include the story of Admiral Byng, Rev Edward Drax-Free of Sutton and the last resting place of the infamous pirate from Treasure Island (based on a real person).

**Speaker:** David Longman

The talk will also be broadcast live via Zoom to Society members.

Flitwick Library Lecture Theatre, MK45 1QJ, 7:30 for 7:45 pm start.

Members are free, visitors are very welcome £5.00 payable at the door.

**November 4th** – Early Bedford and its Castle – Margaret Butt

**December 2nd** – Mowing a Path Through Life – Andrew Grout

**[www.adalhs.org.uk](http://www.adalhs.org.uk)**



Wildlife Trust for  
**Beds, Cambs  
& Northants**  
Flit Vale Local Group



# Wildlife walks & talks

## September

**19th Thursday, Priory Country Park, Bedford at 7pm**

**Bat Walk with Colin Carpenter \***

We will meet by the car park on the first left after turning into Priory Park from Barkers Lane, (by the bottle banks) at 7.00 pm. The road is opposite the drive to Priory Marina. This car park stays open. Please be aware the gates to the main car park at Priory Country Park will be closed before our walk ends. Priory Country Park is an excellent area for bats, and we hope to see and identify several species. If you have a bat detector, please bring it along but Colin will bring some bat detectors with him for use by participants. A torch is essential and insect repellent is a good idea at this time of year!

**\*£4 per adult**

**29th Sunday, 10am to 12:00noon, Flitwick Moor (TL045354)**

**Fungal Foray with Steve Kelly**

A combined event with the Herts and Beds Fungi Group (HBFG). Hoping for a mix of damp and mild weather to guarantee a good showing of mushrooms and toadstools. Steve and other experts will help you identify your findings and tell you more about the wonderful and sometimes weird world of fungi.

**Free but donations welcome**

Booking for outdoor Flit Vale events is essential, as places are limited.

Please contact Ann by email: [flitvale.info@gmail.com](mailto:flitvale.info@gmail.com) or

Phone (leave a message or text if you prefer) 075801 78889 to reserve your place.

The Wildlife Trust for Beds, Cambs & Northants

Registered charity number: 1000412

[www.wildlifebcn.org](http://www.wildlifebcn.org)

Flit Vale Local Group

[www.wildlifebcn.org/flit-vale-local-group](http://www.wildlifebcn.org/flit-vale-local-group)

# What's on in and around Clophill



## SEPTEMBER

### Saturday 7<sup>th</sup> and Sunday 8<sup>th</sup>

A Celebration Exhibition, St. Mary's Church, 12noon – 4pm each day. *See poster.*

### Saturday 14<sup>th</sup>

Coffee and Croissants, Methodist Church, 10am – 12noon. *See poster.*



## OCTOBER

### Thursday 3<sup>rd</sup>

Flower Club meeting, Village Hall, 6:45pm for 7:30pm start. *See poster.*

### Friday 11<sup>th</sup>

Clophill Jumble Sale, Village Hall, 7pm. *See poster.*

### Saturday 12<sup>th</sup>

Coffee and Croissants, Methodist Church, 10am – 12noon. *See poster.*

Plus....

### Weekdays during term time

\* Clophill Community Hub is open, Village Hall, 9am to 3pm.

Also open on Saturdays 10:30am to 2:30pm.

### Mondays...

\* Greensand Community Choir, St. Mary's Church, 7:30-9pm.

### Tuesdays... in school holidays - 2024

\* Clophill Preschool, Stay and Play 10am – 12noon, Village Hall.

2<sup>nd</sup> to 5<sup>th</sup> April Easter Hunt, first 5 Fridays of the summer holidays, all £3 per child.

### Wednesdays...

\* Tea and Chat, Greensand Community Methodist Church, 10:30am – 12noon.

\* Beverley Court Bingo Night, in the Residents lounge, 7pm. All welcome.

### Thursdays...

\* Thursday Leisure Club – TLC – St Mary's Church, 2pm.

### Fridays ...

\* Little Saplings, Stay and Play 9:30am – 11:00am, Acorn Nursery at St. Mary's School.

### Fridays... during term time

\* Clophill Parent & Toddler Group 10am – 11:30am, Village Hall.

## CHURCH SERVICES

### Regular services at St Mary's Church, Clophill...

1st Sunday 8am, Holy Communion and 11am, Family Praise

Other Sundays 11am, Parish Communion

### Regular services at Greensand Community Methodist Church, Clophill...

Weekly Worship at the Church, Sundays at 10:30am.



# Useful numbers

<b>Gas (Emergency)</b>			0800 111999
<b>Electricity (Emergency)</b>			0800 7838838
<b>Emergency Fire/Police/Ambulance</b>			999
<b>Water/Sewage (Anglian Water)</b>			0845 7145145
<b>Telephone</b>		(Customer Services) 150	(Faults) 151
<b>Highways Department (Central Bedfordshire Council)</b>			0300 3008049
<b>Benefits Agency (Bedford office)</b>			01234 361500
<b>Registrar's Office (Births/deaths/marriages)</b>			0300 3008089
<b>Rail (Enquiries)</b>			0845 7484950
<b>Buses</b>	01234 262151	(Link A Ride) 01525 840511	(Flittabus) 01582 406561
<b>Luton Airport</b>			01582 405100
<b>Swimming</b>		(Flitwick) 01525 717744	(Robinson Pool) 01234 212479
<b>LOCAL GOVERNMENT</b>			
<b>Central Beds Offices (Chicksands)</b>			0300 300 8000
<b>Mid-Bed; MP</b>		Alistair Strathern	TBA
<b>Central Bedfordshire Councillors</b>		Susan Clinch	0300 300 8516
		Gary Summerfield	0300 300 8561
		Mark Smith	0300 300 8541
<b>Clophill Parish Council</b>	(Clerk) Heather Myott	clerk@clophill-pc.gov.uk	07888 685 886
<b>HOSPITALS</b>			
<b>Bedford (North &amp; South)</b>	01234 355122	Admissions	01234 261150
		Appointments	01234 359012
<b>Luton &amp; Dunstable</b>			0845 1270127
<b>DOCTOR'S CLINICS</b>			
<b>Amphill</b>	(Houghton Close) 01525 300898	(Oliver Street)	01525 631395
		(Greensands)	01525 631390
<b>Shefford</b>	Enquiries 01462 818620	Appointments	01462 810034
<b>Barton</b>	01582 528700	Flitwick	01525 715300
<b>POLICE</b>		Non Emergency	101
<b>County Police HQ</b>			01234 841212
<b>Amphill Station</b>			101
<b>CHURCHES</b>			
<b>St Mary's Parish Church</b>			
	Revd Cannon Lynda Klimas	rev.l.klimas@btinternet.com	01525 403139
	(Church Warden) Mrs Anne Shegog	anneshegog@gmail.com	01525 864868
<b>St Francis RC Church, Shefford</b>			01452 813436
<b>Clophill Methodist Church</b>	Revd Silas Wood, email: swood11@me.com,		01525 571392
	Mr John Errick		01525 860695
<b>Baptist Churches</b>		(Maulden) Ian Crawford	01525 634325
		(Shefford) Hazel Arnold	01462 812564
<b>SCHOOLS</b>			
<b>St Mary's C of E Lower School, Nursery &amp; Preschool (Headteacher Mrs K Bingley)</b>			01525 860206
<b>Harlington Upper School, Harlington</b>			01525 755100
<b>Preschool</b>	clophillpreschool@gmail.com (Chris) 07936 006381 or (Imogen)		07765 887868
<b>Redborne Upper School, Amphill</b>			01525 404462
<b>Robert Bloomfield Middle School, Shefford</b>			01462 628800

## Village groups

Beverley Court		860920
Brownies	enquiryym.girlguiding.org.uk	
Clophill Community Care	Duty Contact	07791 773705
Clophill Heritage Trust	Ali Bradbury	07894 710001
Clophill Parent and Toddler Group		
	Imogen	07765 887868
Clophill Preschool	Imogen	07765 887868
	Chris	07936 006381
Clophill St Mary's C of E Lower School, Nursery and Preschool		
	Tracy Hayes	860206
Clophill United Charities	Val Martin	07845 731134
Conservation Group	Brian Adams	862297
Flower Club	Gillian Hill	860539
Funzone After School Club		07903 167493
Greensand Community Choir	Luke	07975 520085
Indoor Carpet Bowls	Tony Meredith	860754
Messy Church	Victoria Higgins	07920 568861
	victoriajhiggins@hotmail.co.uk	
Friends of St Mary's (FOSM)	Mary Milne and Jenny Garnham	
	fosmclophill@gmail.com	
Scouts and Cubs	www.scouts.org.uk/get-involved	
Tea and Chat	Anita Errick	860695
Village Hall Booking Secretary	Marylin Browning	07821 643936

## Clophill United Charities

(Registered Charity No. 200034).



**CLOPHILL UNITED CHARITIES IS HERE TO PROVIDE  
FINANCIAL HELP TO THOSE PEOPLE LIVING IN OUR VILLAGE WHO MAY  
NEED IT IN DIFFICULT TIMES.**

Through the forethought and benevolence of residents and friends of former centuries, the current Trustees of Clophill United Charities are able to continue the tradition of helping Clophill residents. They are well aware that at the start of the new school term there might well be unforeseen expenses for parents of children in school.

**Where these require extra financial assistance, we might be able to help and our Clerk, Val Martin would welcome applications.**

**ALL ENQUIRIES ARE HANDLED IN STRICT CONFIDENCE.**

**Tel: 07845 731134 or email [CUCclerk@gmail.com](mailto:CUCclerk@gmail.com).**

# Home

is where the heart is  
*Let's keep it there™*



## Care in your home, just as you like it.

You may be in a situation where you need an extra pair of hands, or you may have complex needs that require dedicated care.

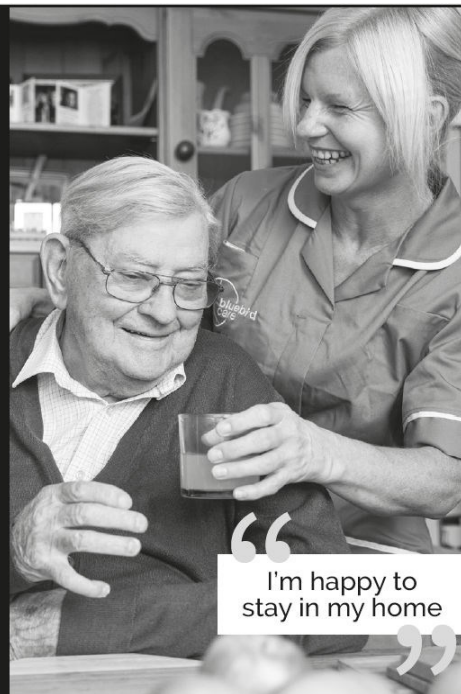
Our well-trusted care service ranges from a 30-minute daily visit through to full Live-in care.

**Call our friendly team today.**

Bluebird Care Central Bedfordshire

**01525 713389**

[bluebirdcare.co.uk/central-bedfordshire](http://bluebirdcare.co.uk/central-bedfordshire)  
[centralbedfordshire@bluebirdcare.co.uk](mailto:centralbedfordshire@bluebirdcare.co.uk)



"I'm happy to stay in my home"



## AMPTHILL & FLITWICK PHYSIOTHERAPY CLINIC

Tel: 01525 720882

[www.chartered-physiotherapy.co.uk](http://www.chartered-physiotherapy.co.uk)

[Info@anfphysio.co.uk](mailto:Info@anfphysio.co.uk)

**1 Kings Road Flitwick MK45 1ED**

**Helping you get back on track**

We offer the very best hands-on physiotherapy treatment

Neck/ Back/ Shoulder/Knee pain

Headaches/Migraines/Sciatica

Arthritis and all joint pain

Whiplash/RSI/Osteoporosis/Sports injuries

Vertigo and dizziness/Posture training and ergonomics

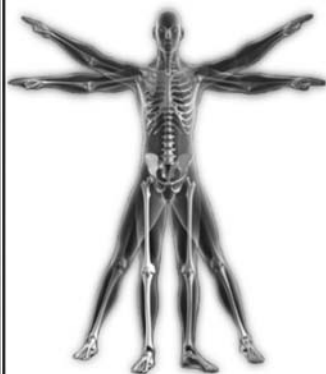
Long Covid

**WE ARE PROVIDERS FOR MOST INSURANCE COMPANIES**

**We also offer complementary treatments:**

Acupuncture/Chinese medicine

Clinical Psychology/Deep Tissue Massage



# Chapman & Kirby Heating

Gas, Plumbing & Heating Installations

Gas Safe Registered

Boiler Servicing & Maintenance

Call us now on: 07831 132308

Email: [info@chapmanandkirbyheating.co.uk](mailto:info@chapmanandkirbyheating.co.uk)

11 Lyall Close, Flitwick, Beds., MK45 1JB



## ACCOUNTING SERVICES

Providing a Much Better service for Mid Beds since 2000

If you are *Self-employed* or a *Small Business* and require assistance with

**Accounts, HMRC tax returns, VAT**

we offer a total confidential service at competitive rates

Contact T: 01525 861087 M: 07714189994 E: [mbaccounts@btinternet.com](mailto:mbaccounts@btinternet.com)

Telephone

**01525  
860526**

## The Stone Jug

**A Free House**

BACK STREET, CLOPHILL

**A Proper Pub for Proper People**

A family run village 'boozer' serving up great value, quality lunches that will fill you up without emptying your wallet! A pub is for 12 months of the year, 365 days and we're here for you on each and every one of them!

- 5 real ales, including 3 guest pumps that change frequently (see our Facebook page for details)
- selection of wines and Prosecco by the glass – or even better, by the bottle
- home-cooked lunches Tues-Sat, 12pm-2.30pm



**REMEMBER OUR MOTTO**

**"A VISIT TO THE JUG IS BETTER THAN GOING TO A PUB"**

**CHEERS JOYCE, VIKKI & MARK**

[www.stonejug.co.uk](http://www.stonejug.co.uk)

[www.facebook.com/thestonejugclophill](http://www.facebook.com/thestonejugclophill)

# Little Saplings Stay and Play Group

FREE refreshments  
for ALL!



Early Years Experts,  
Activities and FREE  
weekly raffle

**Playgroup for Babies and Toddlers up to 4 years old!**

**Where?** Acorn Nursery at St. Mary's Lower School  
(MK45 4BE)

**When?** Friday's 09:30-11:00

**How much?** £5 per child (additional child £2.50) Babies  
up to 9 months are FREE! First session is also FREE!



## A Family Vet for Family Pets

We are a family-owned veterinary practice in the centre of Ampt Hill. We believe in providing fantastic stress-free care tailored to individual pets and owners.

We have now launched our Pet Health Plan, to help make preventative health care for your pet as easy as possible.

For more information:

Visit our website at

[www.ampthillvets.co.uk](http://www.ampthillvets.co.uk)

or

Phone us on 01525 582002

or

Pop in for a chat and to meet the  
team



**We offer a FREE review of your existing Will.**

**Having a Will in place provides peace of mind**

**So many people have died without a Will thus increasing the stress and expense (and often the tax) that their families face.**

**SEVEN GOOD REASONS TO REVIEW YOUR WILL**

- ◇ Have you married or entered Registered Civil Partnership since the date of your last Will? If so, your Will is annulled.
- ◇ If you have no valid Will, the State's distribution of your assets may not be as you would have wished and could result in higher tax.
- ◇ Was your Will home made? If so, you could be storing up difficulties for the family and higher tax could be payable.
- ◇ Executors are personally liable. Are they still willing and able?
- ◇ Do you have children under 18? If so, you need to nominate guardians or they become the responsibility of the Local Authority
- ◇ Will your family be able to claim all tax allowances? Many Wills written before 2017 do not allow the full Nil Rate Band to be claimed.
- ◇ Are you in a second marriage? Special provision should be made for blended families.

- ◆ We quote our fixed fees up front and believe in plain English
- ◆ We meet with you in informal surroundings and spend a lot of time making sure we get everything right and you are happy
- ◆ We advise on the most tax effective solutions
- ◆ Our clients tell us that their experience has been a pleasant one and they are extremely glad that they have the necessary documents in place.

**Please phone Susan Shaw now:**

**Shaws Wills and Trusts 01525 862053**



# DAVID JAMES



WWW.DAVIDJAMESKITCHENS.CO.UK



## MANUFACTURE DESIGN INSTALLATION

We are a local manufacturer of beautiful kitchens. We sell direct to save you money. The factory showroom has an extensive display of different styles.

### SAVINGS ON ALL KITCHENS

& Up To 25% Off Top Brand Appliances

01525 722230 PULLOXHILL BEDS MK45 5EU

# SCENTSY



INDEPENDENT CONSULTANT



Join the wonderful world of Scentsy for all your home fragrance, wax warmers, cleaning products and so much more!!

- Plug in wax warmers - no flame, smoke or soot!
- All warmers come with a Lifetime guarantee!
- Premium quality paraffin wax scent bars!



@Tracy's Scentsy Treasures



tracyscenttreasures.scentsy.co.uk



# APN ELECTRICAL

- ✓ Rewires - Extensions, New Builds & Renovations
- ✓ Consumer Unit Upgrades
- ✓ LED Lighting Upgrades & Installations
- ✓ Outside lights & Security Lighting
- ✓ Power Supplies to Outbuildings, Sheds & Garages
- ✓ Smoke, Heat & Co2 Detectors
- ✓ Fault-Finding & Repairs
- ✓ Boiler Controls
- ✓ EICRs (Electrical Inspection Condition Reports)
- ✓ EV Charging Points



- ✓ Free no obligation quotes
- ✓ Friendly and reliable service
- ✓ Fully insured

CONTACT US  
FOR A FREE QUOTE...



ALEX NEW



07531765164



Apn.electrical@outlook.com





# 6 WEEK CHALLENGE



- **TRAIN WITH US 3 TIMES A WEEK ON OUR GROUP TRAINING PROGRAM**
- **PERSONAL NUTRITION COACHING AND ACCOUNTABILITY**
- **BUILD STRENGTH, FITNESS AND GET IN GREAT SHAPE**

## **WHERE IS THE GYM?**

**OUR GYM IS BASED AT UNIT 3, LONDON LANE, HAYNES WEST END, BEDFORD, MK45 3RA**

## **WHEN ARE THE SESSIONS?**

**WE HAVE SESSIONS AVAILABLE EVERY WEEKDAY MORNING (6-11AM) AND EVENING (5-9PM) PLUS SATURDAY MORNINGS (7-11AM). YOU CAN COME TO WHICHEVER SESSIONS SUIT YOU BEST.**

## **DO I NEED TO BE FIT?**

**NO - WE'LL MAKE SURE YOU'RE WORKING AT A PACE THAT MATCHES YOUR EXPERIENCE AND FITNESS LEVEL.**

## **WHAT HAPPENS AFTER?**

**IT'S YOUR CHOICE - YOU CAN BECOME A FULL MEMBER OR IF YOU DECIDE WE'RE NOT FOR YOU, WE CAN PART WAYS WITH NO HARD FEELINGS.**

**INFO@TRIBESTRENGTHGYM.COM**

**TRIBESTRENGTHGYM**

**WWW.TRIBESTRENGTHGYM.COM**

**CALL US ON 07500006408**



# THE AVENUE KITCHEN

**NEW COFFEE SHOP NOW OPEN IN WREST PARK  
WITH INSIDE AND OUTSIDE SEATING AVAILABLE**



**DOGS WELCOME 🐾**

**POP IN FOR BREAKFAST, LIGHT LUNCHES, OR TEA  
AND HOMEMADE CAKE**

**PLEASE CHECK OUR SOCIAL MEDIA FOR CURRENT  
OPENING TIMES**


**f THE AVENUE KITCHEN  
01525 864400**

**BUILDING 59, WREST PARK, SILSOE, MK45 4HS**

Stray Cat  
Rescue



We are a registered charity, run by volunteers. We are based in rural Bedfordshire and have been rehoming and rehabilitating cats for over 20 years.  
We always have lots of beautiful cats waiting for loving homes.

*If you're looking to adopt, please check out our social media pages & get in touch with us!* 



facebook.com/StrayCatRescue



straycatrescue



www.straycatrescue.org.uk

PURE

Joinery Solutions

Bespoke carpentry and joinery solutions serving homes in Clophill and the surrounding area. Fully qualified with over 40 years' experience. We specialise in creating quality bespoke storage solutions, door hanging, fitting wooden flooring and refurbishing staircases, alongside a wide range of general carpentry and joinery services.

[info@purejoinerysolutions.co.uk](mailto:info@purejoinerysolutions.co.uk)

07786 463217



**Tammys' Talons**

Nail Technician  
Gel. Manicure and Pedicure

IZABELLE HAMMOND  
NAIL TECHNICIAN & PEDICURE  
CARGEL IZ nail design

**Tammy Kirby**

Clophill, Bedfordshire, MK45 4AW

Tel : 07968379309

[tammystalons@gmail.com](mailto:tammystalons@gmail.com)

### ***Laptop & Computer***

Printer, Apple Mac, setup, Repair, Data Recovery, Internet, Wireless Network, Virus Infection, Hacked, Email setup, Home office computer problems. **NO FIX- NO FEE. Qualified & Experienced. 'We Come 2 You'**  
**01525306316- 07925338435** [Pclaprepairs@gmail.com](mailto:Pclaprepairs@gmail.com)

A new professional  
dog grooming salon in Clophill

Please contact Freya on  
**07503 923165**

**Freya's**   
DOG GROOMING

# LOCAL INDEPENDENT MORTGAGE ADVICE



- Access to the whole market
- Industry experts
- Personal service
- Vast experience
- Remortgage
- First time buyers
- Moving home
- Buy To Let



**THE  
MORTGAGE  
EXPERT**

[www.tmexpert.co.uk](http://www.tmexpert.co.uk)

*Contact your local independent mortgage expert: 01525 30 67 60*

*Endeavour House, Wrest Park, Silsoe MK45 4HS*

**YOUR HOME MAY BE REPOSSESSED IF YOU DO NOT KEEP UP REPAYMENTS ON YOUR MORTGAGE**

*We charge a fee of £495 for the straight forward mortgage application and up to £1,495 for the more complex ones.*

*Prior to application we will let you know when this becomes payable.*

*Please note we do not charge any fees upfront or for any initial advice.*



**WREST PARK TUTORS**  
Face-to-Face Tuition  
Maths, English, Science  
Year 1 to Year 11

- Expert tuition from qualified teachers
- Motivating computer programs
- Tailored to your child's level
- Fully equipped learning centre in the grounds of Wrest Park

**Our students develop confidence,  
resilience and independence.  
They love learning with us.**

**TUTORS NEEDED  
TO MEET STUDENT DEMAND**

**Enterprise House, Wrest Park, Silsoe**  
[wrestparktutors@gmail.com](mailto:wrestparktutors@gmail.com)

**f @wrestparktutors**

## *E.T. Accountancy Services*

Experienced Chartered Accountant and  
Chartered Tax adviser based in Clophill  
providing a full range of accountancy  
and taxation services to businesses  
and private individuals.

To arrange a free initial consultation  
please telephone me on 01525 590465  
or email [emma@et-accountancy.co.uk](mailto:emma@et-accountancy.co.uk)

*Chartered Accountant and  
Chartered Tax Adviser*

Emma Thoullass FCA CTA  
[www.et-accountancy.co.uk](http://www.et-accountancy.co.uk)

01525 590465

## Painter and Decorator

Call Chris : 07950714579



*do you want your  
home brightening up?*

*all interior & exterior work*

*no job too small!*

*free no obligation quote*

*25 years experience  
& fully insured*

*facebook: @christopherthepainter  
email: chris.minihane@btinternet.com*

## JK Garden and Landscape Services Ltd



**We offer...**

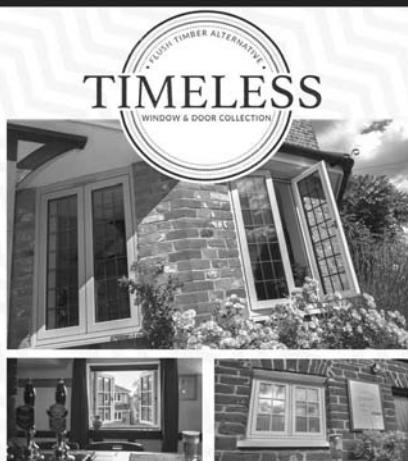


*full landscaping service  
patios  
fencing  
decking  
new lawns  
driveways  
all garden maintenance*

Contact us on **0791 2028254**  
or at **jkgardening@hotmail.co.uk**

You can also find us on Facebook

## Kings Windows



Available in a range of traditional colours  
Choose classic joints to look like wood  
Stunning handle options

## TIMELESS FLUSH TIMBER ALTERNATIVE WINDOWS

as seen in The Old Compasses & The Stone Jug

*available exclusively from  
Kings Windows*



**01582 882 800**  
**www.kingswindows.co.uk**



Lively,  
stimulating  
sessions

Great songs,  
Pop, musicals,  
folk, classical,  
world music  
and more

# Greensand Community Choir



**Mondays 7.30pm - 9pm,**  
St. Mary's Church, High Street,  
Clophill MK45 4BJ

No auditions,  
no need to read  
music

Come along and sing with your  
local community choir, for adults of all  
singing abilities

ISM  
- MUSIC -

e: [greensandcommunitychoir@gmail.com](mailto:greensandcommunitychoir@gmail.com)  
t: 07975 520085

Find us on

Yellowpages.com



**Tel: 01525 861416**  
[www.thebluecat.net](http://www.thebluecat.net)

Find us on Facebook @thebluecatcattery  
or email us at [enquiries@thebluecat.net](mailto:enquiries@thebluecat.net)

The Bluecat is a luxury cattery  
set in the quiet area of Jacques Lane  
in Clophill. With just 14 cat chalets,  
we have time to fuss, pamper  
and play with your cat to its heart's  
content whilst in our care.  
Please call for further information.



- All aspects of plumbing
- Oil heating and maintenance
- Drainage
- Free quotations on all bathroom refits and renovations
- 24-hour callout

Telephone:  
**07789 693959**

Email:  
**jamieb535@  
googlemail.com**

*I specialise in  
bathroom design*

## Misty Double Glazing?

**KEEP YOUR WINDOW FRAMES...  
... WE JUST REPLACE THE GLASS!**

• UPVC • Aluminium • Or Wood

Because we replace just the glass the repair is a  
Fraction of the cost of a complete replacement window.



**[mistydoubleglazing.co.uk](http://mistydoubleglazing.co.uk)**  
**QUALITY GLAZING SERVICES**  
**01525 876808**

**WE ALSO REPLACE BROKEN...**  
• Glass • Handles • Hinges & Locks  
**AND REPAIR...Patio Doors & Conservatories!**



## Your dream Holiday is my priority

Based in Silsoe, I am your local travel advisor. Allow me to arrange your next holiday with care and lose the pain of planning. I'll take care of every last detail so you can explore with confidence and make memories to last a lifetime.

*Neil Forrester*

TRAVEL COUNSELLOR

07479 479934

neil.forrester@travelcounsellors.com  
travelcounsellors.co.uk/neil.forrester



the  
café

Eastcotts Park,  
Wallis Way,  
Bedford, MK42 0PE  
01234 266 366

Visit

[www.peacockscafe.co.uk](http://www.peacockscafe.co.uk)  
for more details on our opening  
hours and to view our full menu.

**W&H PEACOCK**  
AUCTIONEERS & VALUERS

## The Cafe at W&H Peacock is **OPEN**

View the salerooms for our upcoming auctions and  
then relax with a coffee and a slice of cake.

Our unique cafe in Bedford Auction Centre with free wi-fi  
comfortably seats over 100 customers. We serve cooked  
breakfasts, paninis and sandwiches, light lunches and  
snacks plus a range of hot and cold drinks.



# LOCAL ALLOY WHEEL REFURBISHMENT



**Tel:**  
**01525**  
**860069**

**Alloy Wheel Repairs**

**Diamond Cut Alloy Wheels Repaired On Site**

**Powder Coat Primers & Lacquers**

**Fast Turnaround Alloy Wheel Welding**

**Tyres At Competitive Prices**

**NEW for 2015 - 4 Wheel Alignment Service**

**[www.mintalloys.co.uk](http://www.mintalloys.co.uk)**

## Welcome to Clophill St Mary's C of E Lower School and Nursery

We are a small, friendly, village Lower School, graded "Good" by Ofsted (2021), with close links to the local community.

We welcome children from 2 years to 9 years, supporting and nurturing each individual child AND teaching them about life-long Values.

Wrap around care available for all ages (breakfast and after-school care).

### Acorn Nursery

Preschool provision in a beautiful bespoke building and outdoor space! Providing 30 hours free childcare entitlement with wrap-around care too!



**SPACES  
CURRENTLY AVAILABLE**



**EVERYONE is welcome at St. Mary's and you do not have to be a practicing Christian to attend our school.  
We are first and foremost a Village School and Nursery-)**

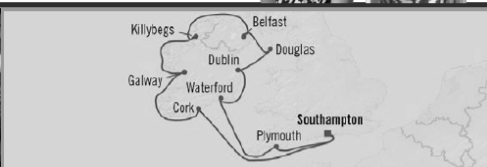
To arrange a visit, please call: 01525 860206 or email: [generaladmin@clophillstmarysschool.co.uk](mailto:generaladmin@clophillstmarysschool.co.uk)


For more information visit: [www.clophillstmarysschool.co.uk](http://www.clophillstmarysschool.co.uk)





Select Travel Holidays  
Home of Cruise Select  
24A Mill Street, Bedford



Enjoy exclusive **SAVINGS** and **FREE** amenities when booking select voyages with  with Select Travel Holidays

As cruise specialists with 25 years' experience and a preferred partner to Oceania Cruises, Select Travel Holidays (home of Cruise Select) can offer you exclusive savings AND:

- Up to \$450 FREE shipboard credit per stateroom;
- A FREE upgrade to Prestige Select Beverage Package; and/ or:
- A FREE bottle of champagne in your stateroom

**FEATURED CRUISE: CELTIC CLASSICS**  
10 night Southampton Roundtrip from  
15 August 2025 onboard Vista

Veranda Stateroom from ~~£4,699pp~~ **£4,429pp** -  
SAVE £270pp + \$350 FREE Shipboard Credit per  
Stateroom + FREE Upgrade to Prestige Beverage  
Package

**Contact Us To Find Out More:**  
Tel: 01234 326778  
[sales@selecttravelholidays.co.uk](mailto:sales@selecttravelholidays.co.uk)

Applicable to select cruises and select cabin categories, free amenities and vary according to cruise, savings vary according to cruise and cabin category. Terms and conditions apply. Please enquire.

[www.selecttravelholidays.co.uk](http://www.selecttravelholidays.co.uk)



BOOK WITH CONFIDENCE  
ABTA & ATOL protected



## AVENUE17TRAINING

Experienced Training provider offering First Aid and Health & Safety training.

From Basic first aid to first responder level, dental BLS & ILS, fire safety

We can tailor courses to your sector requirements.

Regulated (RQF) and Vocational Technical Qualifications (VTQ)

A competitive price structure.

Contact us for a discussion or no obligation quote

[Mark@avenue17training.co.uk](mailto:Mark@avenue17training.co.uk)

07917729293

## A L & G ABBOTT

Funeral Directors

~ Established 1832 ~

### WITH YOU WHEN IT MATTERS MOST

An independent family business continuing to provide a caring & professional service to Bedford, Kempston & the surrounding villages.



- 24 Hour Personal Service
- Bespoke Funerals
- Private Chapels of rest
- Green Burials
- Home Arrangements
- Civil Services Available
- Bereavement Listening Service  
(Free to our families)



T: 01234 843222

[www.abbott-funerals.co.uk](http://www.abbott-funerals.co.uk)

[support@abbott-funerals.co.uk](mailto:support@abbott-funerals.co.uk)

150 BEDFORD ROAD, KEMPSTON, BEDFORDSHIRE, MK42 8BH



## GODFREY Building Services

**General Building, Plastering, Decorating, Tiling**

**Over 30 years' experience**



SSIP Health & Safety

**Paul Godfrey**

**Clophill, Bedfordshire**

**Contact M: 07973791137**

**Contact E: [godfreybs@btinternet.com](mailto:godfreybs@btinternet.com)**



**Constructionline Member since 2008**

# Residential Conveyancing

Experienced Local Consultant Conveyancer (Clophill)

**Michele Hosey**

**[michelehosey@photiades.com](mailto:michelehosey@photiades.com)**

**01525 300577**

Competitive legal costs, personable, efficient,  
strong communication, faster turnaround times

**Contact me for a free no obligation estimate  
or to discuss your specific requirements**

Recommended by Local Estate Agents

**photiades solicitors**  
FRIENDLY EFFICIENCY

L U N A

FINANCIAL PLANNING

How to use your pension pot wisely

## Do you have a plan?

Maybe you have several pension pots?

What about old employer's pension schemes?

We can help you make the right choice – either when you retire or to build your pot. You now have more choices than ever.

We make sure we take the time to understand your needs, goals and preferences before we make any recommendations.



For professional, friendly, financial advice contact us on:

01525 861803 | [john@hills-howson.co.uk](mailto:john@hills-howson.co.uk)

Enterprise House, B52 Wrest Park, Silsoe MK45 4HS

Head Office | 4 North Road,  
Pontywaun, Newport NP11 7GA

# Auction Sales & Valuations

Valuation, collection and auction service  
of individual items through to complete  
property and commercial clearances.

Call for a free no obligation quote or  
email **info@peacockauction.co.uk**

## SALE ENTRIES NOW INVITED

Antique & Modern Furniture • Clocks • Books • Ceramics & Glassware • Pictures & Prints • Bicycles  
Jewellery & Watches • Collectables • Garage Tools & Equipment • Household Electrical Items • Office  
Furniture & Equipment • Retail Products & Stock • Vehicles • Horticultural & Commercial Equipment  
Building Materials • Garden Furniture & Effects

**www.peacockauction.co.uk**



**W&H PEACOCK**  
AUCTIONEERS & VALUERS  
**01234 266366**



Eastcotts Park,  
Wallis Way,  
Bedford,  
MK42 0PE

## THE COMPUTER MAN



Got a problem with your computer and don't know what to do?  
Suffering with a virus or spam?

**Don't hesitate!**

**Ring your local computer expert**

**Remote repairs or home visits**

(Day, evening & weekend)

**Lap top/desktop top loan**

(Free pick up & drop off in local area)

**Mobile phone repairs**

**SOCIAL  
DISTANCING  
OBSERVED**

**Gloves, masks and  
sanitiser available  
on request**

**Based in  
Amphill**

Contact Stephen Amos  
**07976 718567**  
Office/Admin 07527 740676  
[computerman.office@gmail.com](mailto:computerman.office@gmail.com)

**20  
YEARS**  
EXPERIENCE



We take care of the details, so you can say  
goodbye the way you want to.

NEVILLE. Because there is a difference.

### **AMPTHILL**

The Old Church, Flitwick Road MK45 2NT

t: 01525 406132

e: [amphill@nevillefuneralservice.com](mailto:amphill@nevillefuneralservice.com)

---

### **SHEFFORD**

24 Clifton Road SG17 5AE

t: 01462 813258

e: [shefford@nevillefuneralservice.com](mailto:shefford@nevillefuneralservice.com)

[www.nevillefuneralservice.com](http://www.nevillefuneralservice.com)



# HAPPY PLACE, RESTORED

If you love your lawn,  
you'll love GreenThumb.  
Our year-round treatments  
will give your grass  
the TLC it deserves,  
so you get a lawn you  
can feel good about.



**GreenThumb**  
LAWN TREATMENT SERVICE



Discover more at [greenthumb.co.uk](http://greenthumb.co.uk)

Scan  
here

Bedford & Huntingdon

01234 709345 or 01480 597432 [bedford@greenthumb.co.uk](mailto:bedford@greenthumb.co.uk)

Baths, Toilets &  
Showers  
Sinks and Taps  
Guttering  
Leaks and Burst Pipes  
Drainage  
Handyman jobs also



beta plumbing

Silsoe based  
No call out fee – free estimates  
Fully insured and guaranteed  
No job too small  
**07720 723653 01525 864859**  
[info@betaplumbing.co.uk](mailto:info@betaplumbing.co.uk)  
[www.betaplumbing.co.uk](http://www.betaplumbing.co.uk)

## TIM DOWNING

**Washing Machines Dishwashers Dryers Electric Ovens**  
**Repairs Servicing Sales**



Tel: Tim on Clophill 860148  
Mobile: 07969 545 276



A local family business offering a quality service at a competitive price

A member of the White Goods Trade Association  
Fully Insured Est. 1981

# Root 'n Branch

Your Local Friendly & Reliable Gardener

All aspects of Garden Maintenance undertaken  
• PRUNING • MOWING • WEEDING • PLANTING • HEDGING

Southfields, Shefford  
email: whooley@hotmail.co.uk

**Tel: 07771 537385**

Public Liability  
Insured



THE CONIFERS  
— CANINE HOTEL —

LUXURY  
ACCOMMODATION  
HOLISTIC FOOD SHOP

01525 860339

[www.the-conifers.co.uk](http://www.the-conifers.co.uk)



*Bathroom  
Vogue*

EST.  
1989

- Suppliers of traditional and modern equipment
- Working whirlpool & spa baths, power & steam shower systems on display
- Over 40 settings on display
- Complete installation service if required
- Personal friendly service from a family run business
- Wall and floor tiles
- Accessories
- Mirrors
- Bathroom furniture
- Heated towel rails
- Saunas
- Bathroom cabinets

**SHEFFORD 01462 627002**

[www.bathroomvogue.com](http://www.bathroomvogue.com)

Unit 4A, Shefford Industrial Park, St Francis Way, Shefford SG17 5DZ



# BURGLAR ALARMS

*New Alarms Fitted or Upgrade Existing Alarms*

## BURGLAR ALARMS

We fit New Alarms - Wired or Wireless Systems

*\*We can service and maintain your existing alarm\**

## CCTV

We fit high quality systems to maximise your security.

Access your CCTV via the internet or mobile.

## DOOR ENTRY

We fit a range of quality video and audio intercoms to suit your needs.

*We are a family run business with over 35 years experience in home security and crime prevention.*



[www.maximumsecuritysystems.co.uk](http://www.maximumsecuritysystems.co.uk)

Contact:

**01582 864138 / 07746 111520**

*For a free quote and consultation*



# NEWBURY FARM PLANTS

Plant Inspiration

NEWBURY FARM, AMPHILL ROAD, SILSOE MK45 4HB

OPENING HOURS - WED - SAT 9 - 5 & SUN 10 - 4

TEL: 01525 860048

**WIDE SELECTION OF BEAUTIFUL GARDEN PLANTS**



**RHS Gold Medal Winner 2023**



**NEW Pilates** classes based in **Houghton Conquest village**. Small group classes to ensure correct posture and alignment in a friendly **private studio**.

All abilities and ages welcome with equipment provided. Classes are 45 mins in length, including a warm-up, main session and closing stretch.

**Pilates is a low impact** form of exercise which is kind on the joints. Focusing on strengthening the **deepest core muscles** which support and wrap around the spine. There are many benefits to Pilates including the easing of lower back pain and reducing stress and anxiety.

- **Group Mat Classes** – Mon, Wed, Thurs & Friday 9.30am/10.30am, 6.30pm/7.30pm
- **121 Mat Pilates** Sessions available at request
- **121 Reformer sessions** – Body Control qualified, please enquire for available times
- **DM on Facebook, Instagram or email** – [info@thepilatesbox.co.uk](mailto:info@thepilatesbox.co.uk)

## Take out an annual ad in Clophill *SPOTLIGHT*

*Black & White per year*

This is one-half £123 Height 92 x Width 126 mm

Please email our Advertising Manager

[ads@clophillspotlight.co.uk](mailto:ads@clophillspotlight.co.uk)

Other sizes:-

A sixth of a page (H31mm x W126mm) £58

Quarter page (H92mm x W61mm) £75

A third of a page (H61mm x W126mm) £88

A full page is £230

## Hire Clophill Village Hall



Wedding Receptions  
Birthdays & Special Occasions  
Dances and Discos  
Club & Community Meetings & Activities

Phone: 07821 643 936

Mail: [Clophill.villagehall@gmail.com](mailto:Clophill.villagehall@gmail.com) Web: [www.clophillvillagehall.co.uk](http://www.clophillvillagehall.co.uk)

## ROGER STOREY

**YOUR LOCAL PAINTER AND DECORATOR**

Friendly and Reliable Service

Many Years Experience

Please phone: **01525 861253** or **07800 777615**

## ANDREW BAKER WINDOWS

9 SHEFFORD ROAD  
CLOPHILL BEDS  
MK45 4BT

SPECIALISING IN UPVC WINDOWS,  
DOORS, CONSERVATORIES,  
FASCIA, SOFFITS, GUTTERS AND  
CLADDING. ALSO AVAILABLE FOR CARPENTRY  
WORK. NO JOB TOO SMALL OR LARGE.

20 Years experience.  
Free local quotes.

**FENSA**

Fensa Registered  
FIVE YEAR GUARANTEE

Contact Andrew: 01525862804 / 07825017855

Email: [abakerwindows@gmail.com](mailto:abakerwindows@gmail.com)



# WOBURN COUNTRY FOODS THE GOURMET BUTCHER

**HAYNES WEST END - WOBURN SANDS**

## THE FARM SHOP, HAYNES WEST END

WEST END FARM, HAYNES WEST END, MK45 3RA  
BUTCHERS HOTLINE - 07845141969

## FROSTS FOODHALL WOBURN SANDS

NEWPORT ROAD, WOBURN SANDS, MK17 8UE  
BUTCHERS HOTLINE - 07754215335

## ORDER ONLINE

WOBURNCOUNTRYFOODS.COM

*Family Friendly, warm and  
welcoming golf club where  
everyone is welcome*



Cainhoe Wood  
GOLF CLUB

Brand New Seasonal Menu in our friendly clubhouse  
which is welcome to all!



New Sunday Menu  
perfect for all the family!



Sky Sports showing all the  
big sporting events!

JOL Golf Academy - individual and group  
lessons available from Beginner to  
Advanced!

Winter Prices: £17.50 Midweek  
£22.50 Weekend for 18 holes  
on our beautiful Manor Course



[www.cainhoewoodgolf.co.uk](http://www.cainhoewoodgolf.co.uk)



01525 860800

# Advertisers index

<b>Auctioneers &amp; valuers</b>		<b>Garden</b>		<b>Print Services</b>	
W&H Peacock	39	Green Thumb Lawn Treatment	41	Fidelity Design & print	IFC
<b>Bathroom Services</b>		JK Garden and Landscape Services	32	<b>Public Houses</b>	
Bathroom Vogue	42	Newbury Farm Plants	43	The Stone Jug	24
<b>Builders &amp; Carpenters</b>		Root 'n Branch	42	<b>Repair Services</b>	
Godfrey Building Services	37	<b>Health &amp; Beauty</b>		Tim Downing Repair Services	41
PURE joinery solutions	30	Bluebird Care	23	<b>Schools</b>	
Stuart Benson Building Projects	IFC	Ampthill & Flitwick Physiotherapy	23	Clophill PreSchool	BC
<b>Car Services/Repairs</b>		Pilates Box	44	Clophill St Mary's C of E	35
A&F Motors Ltd	IFC	Tracy's Scentsy Treasures	27	Acorn Lower School and Nursery	35
Mint Alloys	35	Tammy's Talons	30	Little Saplings Stay and Play Group	25
TC Coomber Car Services	BC	Tribe Strength Gym	28	<b>Sport</b>	
<b>Choirs</b>		<b>Home Improvements</b>		Cainhoe Wood Golf Club	47
Greensand Community Choir	33	Christopher The Painter	32	<b>Security Services</b>	
<b>Computer Services</b>		David James Kitchens	27	Maximum Security Systems	43
The Computer Man	39	Roger Storey - Painter & Decorator	45	<b>Travel Services</b>	
PCLap Repairs	30	<b>Legal</b>		Select Travel Holidays	36
<b>Electrical Services</b>		Photiades Solicitors	38	Travel Counsellor	34
APN Electrical	27	Shaw's Wills	26	<b>Tuition</b>	
<b>Financial Services</b>		<b>Pet &amp; Animal Services</b>		Avenue17Training	36
ET Accounting Services	31	The Conifers Canine Hotel	42	Wrest Park Tutors	31
LUNA Financial Planning	38	The Bluecat Luxury Cattery	33	<b>Village Hall</b>	
MB Accounting Services	24	Ampthill Veterinary Centre	25	Clophill Village Hall	45
The Mortgage Expert	31	Freyas Dog Grooming	30	<b>Windows/Replacement</b>	
<b>Food &amp; Refreshments</b>		Stray Cat Rescue	30	Andrew Baker Windows	45
Café at W&H Peacock	34	<b>Plumbing &amp; Drainage Services</b>		AW Windows	IBC
Woburn Country Foods	46	Jamie, the happy plumber	33	Kings Windows	32
The Avenue Kitchen	29	Beta Plumbing	41	Misty Double Glazing	33
<b>Funeral Services</b>		Chapman & Kirby Heating	24		
AL&G Abbot, Funeral Directors	37				
Neville Funeral Service	40				

*IFC = Inside Front Cover IBC = Inside Back Cover BC = Back Cover*

## Love reading Spotlight?

Don't forget to mention us when you use a business that advertises in this magazine!

**This space is available for a new Advertiser.**

For more information and pricing please  
either email [ads@clophillspotlight.co.uk](mailto:ads@clophillspotlight.co.uk)  
or submit the contact form on the  
Spotlight website:

[www.clophillspotlight.co.uk/advertising-contact-form/](http://www.clophillspotlight.co.uk/advertising-contact-form/)

## NO PRESSURE SALES – YOU DEAL WITH THE OWNER FROM START TO FINISH



- ✓ A-rated windows as standard
- ✓ Composite doors
- ✓ High security
- ✓ Bifolding doors
- ✓ Conservatories
- ✓ Fascias, soffits and guttering
- ✓ Insurance-backed guarantee
- ✓ Fensa certificate



**Contact: ANDY WOOD**

**01582 536944 or 07796 272539**  
**sales@awwindows.co.uk**



See reviews from satisfied customers at [awwindows.co.uk](http://awwindows.co.uk)



# Clophill Preschool

We are a unique outdoor setting based in the rural grounds of Clophill Village Hall welcoming children from the age of 2 and offering a bespoke SEND provision.

Our passionate and experienced staff nurture every child and broaden their perspective, enrich their knowledge and spark the magic of wonder through a curriculum based in nature.



**Ofsted**  
Outstanding  
Provider

**Call or email to find out more**

07765 887868 or 07936 006381

[clohillpreschool@gmail.com](mailto:clohillpreschool@gmail.com)

[www.clohillpreschool.co.uk](http://www.clohillpreschool.co.uk)



Find us on  
**Facebook**





**MOT'S CLASS 4/5L/7**  
**CAR SERVICING & REPAIR**  
**TYRES & EXHAUSTS**  
**AIR CONDITIONING**  
**DIAGNOSTIC CODE READING**

**Collection  
& Delivery**  
SERVICE AVAILABLE  
*Please ask*

**AMPTHILL**  
**01525 406330**

**UNIT F, AMPTHILL INDUSTRIAL ESTATE, STATION ROAD, AMPTHILL, MK45 2QY**