

Vol 47 | No.8

FREE

# **CLOPHILL SPOTLIGHT**

OCTOBER 2024



**LOVE YOUR  
LOCAL NEWS**



*Shout  
about  
your  
business!*

- Branding and design
- Business stationery
- Leaflets & brochures
- Posters & banners
- Labels & packaging
- Branded workwear
- Plan scan, copy & print
- Photo printing

*Same, next & 3 day services  
Order online - collect in-store*

**www.fidelityprint.co.uk**

01234 907907 | [quotes@fidelityprint.co.uk](mailto:quotes@fidelityprint.co.uk)  
Telford Way, Bedford MK42 0PQ Mon-Fri 10-4



**MOTORS LTD**

**Tel: (01525) 404919**

**89 Oliver Street, Ampthill, Bedfordshire MK45 2SA**

**CAR AND COMMERCIAL VEHICLES  
ALSO CLASSIC & AMERICAN CARS**

**SERVICING – REPAIRS – BREAKDOWN  
SPRAYING – M.O.T.**



### **Stuart Benson Building Projects**

**Design, Build and Maintenance including Interior Refurbishments,  
Kitchen / Bathroom fitting, Tiling, Flooring, Skirting boards, Doors  
Garage conversions. Exterior Decking, Patios, Driveways  
Garden Offices/ Sheds**

**Tel: 07946 579862 or 01525 839878**

**Email: [benson.stuart@gmail.com](mailto:benson.stuart@gmail.com)**



## A word from the Editor...

Welcome to the October issue of Spotlight

*Dear Reader,*

In our September issue, the Reflections article drew the interest of one of our residents. The picture in the piece by Julie, was of a pearly king presenting the awards at the tug-of-war competition back in September 1979. Well, it turns out that the pearly king was her father and she would love to have a copy of the photo. If anyone has it



or knows someone who might, please email me at Spotlight magazine (address below) and I will put you in touch with her. Thanks!!

Now we are in October we have our **Grand Jumble sale** in a few days' time, on Friday 11<sup>th</sup> in the Village Hall. See page 11 for details of how to donate your unwanted items or why not pop along for a bit of a rummage. See you there!!

**Best wishes,  
Elaine**



## The magazine staff

EDITOR	Elaine Jones	07918 975823
	editorial@clophillspotlight.co.uk	
ADVERTISING MANAGER	ads@clophillspotlight.co.uk	
DESIGN MANAGER	Colin Watt	
DISTRIBUTION MANAGER	Toni Elston	07979 643047
	Paul Leckie	
TREASURER	Jon Bates	07725 068828

***Deadline for articles is 20th of the month***

You can also read Spotlight online

***[www.clophillspotlight.co.uk](http://www.clophillspotlight.co.uk)***

# Come into the Garden

*With Kate Gardner*



We have long known that gardening is great for physical health, but how about your mental health? The feeling of relief you can get from being outdoors in the fresh air blows away the emotional cobwebs, and revives us if we're feeling run down. But have you ever considered it as a way of dealing with anxiety and depression, or helping to counter the impact of severe mental illness?

Clophill now has its own therapeutic garden under development and we are looking for volunteers to help create this 1.5 acre site for the whole community to benefit from. Bev Hall from Bloomin' Well is leading this project and will be running some volunteer days during September and October. More information to follow, but keep your eyes peeled for posters appearing around the village soon. In the meantime, here are some things to keep you busy in your own gardens.

**Acers** put on a spectacular show as their leaves turn to deep magenta, purple or golden yellow. They can either be planted into the borders or make excellent container plants, for the more shaded areas of the garden. **Dahlias** will continue to flower until the first frosts, particularly if you regularly deadhead and feed them. The single petal varieties are the best for insects as they provide a good source of late season food. **Cornus** (dogwoods) put on a spectacular show before their leaves fall to reveal colourful winter stems from the deepest black, through red to the palest green and yellow.

Now is also a good time to take hardwood cuttings to make new plants for free. Cut a stem about 30cms and plunge the bottom half into a pot of compost. Leave it somewhere sheltered over the winter to put on some new roots and you will have new plants for free. This also works for a number of other shrubby plants including roses, hydrangeas, Abelia, Buddleja (butterfly bush), Forsythia, Philadelphus (mock orange) Ribes (flowering currant), and viburnums.

Ornamental grasses are at their best in autumn, and combine well with all kinds of perennials and shrubs. **Miscanthus sinensis** cultivars form large, dense clumps and showcase bright, feathery, narrow plumes that look superb in low autumn light. Standing tall (up to two metres) and upright through the whole of winter is an added bonus. If you prefer something smaller, try **pennisetum** or fountain grass, with its distinctive bottle-brush flower. These clump-forming grasses do best in full sun and look good throughout autumn, especially amongst herbaceous perennials such as **Japanese anemones** and **sedums**, which are flowering at the same time.

Now is the perfect time for planting spring bulbs, so how about planting drifts of spring bulbs informally in your lawn, including crocuses, dwarf narcissi and snake's-head fritillaries. It's also a good time to be planting up containers with

plants to add winter colour. Heathers, cyclamen, winter pansies and skimmia will provide colour and interest throughout the dark winter months. Our local plant nurseries and garden centres have an amazing selection of plants and will be able to provide advice on what will work best in your garden to give winter long colour and interest.

If you have been enjoying the tropical feel from Cannas, now is the time to lift them to avoid frost damage, dry off the tubers and store in cool dark conditions until spring. It's also a good time to lift and pot up any tender perennials, such as chocolate cosmos, pelargoniums and fuchsias, to protect them over the winter. If lifting and storing is not an option, then leave in the ground where they have been grown, cut back the top growth to 10cm and protect the roots and basal buds with a thick layer of well-rotted manure or bark chippings.

You still have time to transplant any deciduous shrubs that are in the wrong place, as well as plant new evergreen shrubs and trees. The soil is still warm so that allows a good strong root ball to develop before the cold winter weather kicks in. Just make sure to water well in and then add a good level of mulch to help conserve water and protect the plants while they establish.

***Happy Gardening***

A poster for the Christmas Lights Switch On event. The background is dark with a bokeh effect of light circles on the right side, suggesting a Christmas tree. The text is white and centered.

CLOPHILL PARISH COUNCIL  
will be organising  
*Christmas Lights*  
Switch On  
**Sunday 1st December 3 - 6pm**  
**STALL HOLDERS WANTED**  
We are also looking for local businesses support  
for donations towards event costs:  
Lights, brass band, choir, Father Christmas  
and gifts for children.

If you would like to help please contact:-  
**clerk@clophill-pc.gov.uk**

The logo for Clophill Parish Council, featuring a stylized building and the text "CLOPHILL Parish Council".

## Reflections – Clophill in November 1979 - Voices from the past.

**Continuing our series looking back at previous issues of Spotlight and Clophill Village life.....** *By Julie Benson.*

In a way, this photo of “A peaceful setting with the old Church just visible in the background” could be quite fitting. I thought that it was of ponies in the fields down the Causeway – where just this past weekend they would have needed waders or water wings, but I don’t think that it is, with the old Church being up there on the left. It has to have been taken from a more easterly location doesn’t it.



Before I let you know what was going on in October here in the village 45 years ago, I have to tell you that I have heard that Barry Inskip, the ‘one man band’ who started Outlook (and thus Spotlight) died recently. He was so enthusiastic and he got the magazine up and running with Vera Farr (and others) typing onto ‘skins’ which he then wrapped, extremely carefully, round the cylinder on the ‘Banda’ machine, which was kept in the church, turned the handle and ‘voilà’ the pages of the magazine were produced. They then had to be stapled and delivered. Well done and Thank You very much indeed Barry; what would we have done without you? I certainly wouldn’t be doing this, and there would be nothing for you to look back on and remember!

I find it interesting that a lot of things don’t change in topic and one of these is ‘delivering’. On page 1 there is a plea for distributors to virtually every road in the village by the looks of it. You might see one of these pleas in a recent edition too!

It’s the harvest season and “business was brisk with Brian Parker, who maintained a swift and entertaining delivery” as auctioneer when harvest goods were sold and £130 was raised; £70 of which was for the children of Kampuchea, the rest for St. Mary’s Church.

The WI members enjoyed “an interesting and informative talk, illustrated by a varied selection of slides” by Mr R Croucher; Development Officer of the RSPB and the ‘decorated hen’s egg competition’ was won by Mrs Chapman, 2<sup>nd</sup> Mrs Buckley and 3<sup>rd</sup> Mrs Brooks.

The Flower Club held its annual show on 13<sup>th</sup> October, with the theme of ‘Country Crafts’. There were eight crafts on show and prizes to win in each and among those Mrs J Wheeler (Get Plaiting), Mrs M Panter (Get Knotting), Mrs K Smith (3 prizes) and Mrs D Drake (Spinning & Weaving). Class 8 Cottage Garden, was the children’s category and 0-6 years winners were Alison Wheeler, Katie Loakes and Julia Drake; the 7-10 years winners Claire Cranswick, Sarah Gibbs, Emma Naylor, Alison Pitts and Hazel Brooks; well done all.



## Reflections – Clophill in November 1979 (continued ...)

There is a list of November birthdays, with the October winner, Stephen Bodiley, picking out November's winner of £1 Ian Bousted; what a lovely feature. The 'Spotlight dance' raised £30 towards its funds, the recipe was 'Chicken with Rice' and your lawn was the subject of the gardening feature. 'Sid' was back with his choice of recent singles and album releases mentioning Queen's 'Crazy little thing called love, Slade's 'Sign of the Times' and Chi-lite's 'Stay a little longer' among a long list of other singles and from the Albums list, how about 'Whatever You Want' from Status Quo? takes you back eh!

At the end of the magazine is a lovely list of 'Did You Know That' among which: Buy and Bar are towns in Russia, Bananas in Australia and Zaire, and Nora is in the Red Sea! Apparently, if you siphoned the fuel out of a jumbo jet and used the same about of petrol in a mini-car, you could drive four times round the world. Gosh! However, I think that the main feature of the magazine was 'The Ballad of the Bell Tower' by John Greenwood. (See next page.) It concerns the placing of the school bell tower to its present position after the old school was sadly demolished.

### Amphill Health Walks

Fortnightly walks in and around Amphill

#### Short led walks, all welcome

Amphill Health Walks are for anyone who wants to get more active. They are about **3 miles long** and last about an hour and a quarter. Everyone walks at their own brisk pace, with a backmarker to make sure no one is left behind. There may be some hills and in bad weather there might also be some mud but we do our best to minimise this!

**The walks are all free and start at 10am.**

**Please note** that dogs are not allowed on the walks and ensure you wear suitable footwear.

**11th October Priory Country Park Bedford MK41 9DJ**

**25th October Forest Centre Marston Moretaine MK43 0PR**

(NB: There is a £2 charge for parking up to 3 hours)

**8th November Danish Camp, Chapel Lane, Willington MK44 3QG**

After the walks we usually find a cafe or similar for refreshments.

We are a very friendly group so why not come along to one of our walks and see if it's for you?

For more information contact Mike Fayers on [mikef@bedsrcc.org.uk](mailto:mikef@bedsrcc.org.uk) or 01234 832619



# The Ballad of the Bell Tower

*By John Greenwood*

The bell tower off old Clophill School  
Should stand beside the gate,  
The County said they had no cash,  
The job would have to wait.

The P.T.A. said then that they  
Would put it in its place,  
For Duggan he could get a crane  
And Everitt make the base.

So early one grey Saturday  
They waited for the crane,  
The tower was fixed on two large beams  
In drizzle, mud and rain.

The crane drew up and raised its jib,  
They threw the ropes around,  
Greenwood and Joshi hoisted chocks  
Three metres from the ground.

All the weight was at the top.  
The bottom was too light,  
So four strong men stood on the beams  
To keep the tower upright.

The crane picked up the tower, and on  
The beams the men did ride,  
With Mrs Roberts looking on  
And twelve small boys beside.

The lady from the Bedford Times  
Took pictures of the feat;  
The Rector stopped the traffic as  
The crane approached the street.

But then it skidded, wouldn't move,  
Reversed, and jerked right back  
The tower rocked from side to side  
Above the muddy track.

It was too steep, the crane then raised  
And swung them o'er the gate;  
The tower swayed left, right and back  
And wildly did rotate.

With only rope and rotting wood  
To save them from the fall,  
The brave men of the P.T.A.  
They hardly flinched at all.

With Whysall's help they came down safe  
And then without its load  
The crane sped up the slippery slope  
And straight into the road.

The rest was simple, Sheppard sawed  
The beams from off the base;  
The crane then lifted up the tower  
Onto its resting place.

North pointed north, and East was east  
And South showed which was south,  
But to the west hung a doll's head  
With mud upon its mouth.

So Cranswick on a loop of rope  
Was hoisted by the crane,  
Removed the hideous plastic head  
And cleaned the weathervane.

So, when you see the bell tower now  
Remember as you stare  
The bravemen of the P.T.A.  
Revolving in the air.





**Clophill and District  
Flower Club**

[www.clophillflowerclub.com](http://www.clophillflowerclub.com)

invite you to join them for



# 'Floral Moments'

*A floral demonstration by*

**Barbara Collins**



**Thursday 7 November 2024**

**Clophill Village Hall**

6.45pm for 7.30pm start



*Visitors always very welcome, £7 per meeting including refreshments*

*For further information, please call Gillian on 07960 662334*

*or see our website*



# **St Mary's School News**

*from Mrs. Bingley our Headteacher:*



We are delighted to be back after our Summer break and hope you all had a lovely August.

Since our return to school on 4<sup>th</sup> September, we have welcomed lots of new children into both our Reception and Nursery classes, as well as some new members of staff – three Teaching Assistants, our new Nursery Room Leader and a new School Secretary! We have also welcome three new teacher trainees, working within our Year 2, 3 and 4 classes.

Our new cohort of Year 1 children have loved their Forest School sessions so far. This time we have Bracken and Ivy groups and have welcomed a new volunteer to support with these fantastic sessions. Year 4 have also begun their final block of swimming lessons at the amazing Happy Tiddlers in Barton.

Some of our Key Stage children attended a Tri Golf festival at Arnold Middle School in the middle of the month. We celebrated Jeans for Genes day to raise money for this important charity on the 20<sup>th</sup> September and sent some representatives from Oak Class to Samuel Whitbread to attend a Cultural Heritage Workshop along with children from other local cluster schools. We also held our annual Harvest Festival service in Church and our Parents/Carers generously donated foods and toiletries which have been split between the Clophill Community Hub and the Need Project.

We have lots planned for this year and I am looking forward to sharing our activities throughout this academic year. Don't forget, you can keep up to date about school events by visiting our website: [www.clophillstmarysschool.co.uk](http://www.clophillstmarysschool.co.uk) or joining our Facebook page: <https://www.facebook.com/clophillstmarysschool>

## **Acorn Nursery news**

*from Mrs. Hayes our Early Years Leader:*

Acorn Nursery are having a fantastic start to the year! We welcome new staff, including the lovely Mrs. Godfrey as Nursery Room Lead who brings with her tons of Early Years experience. We are extremely pleased to have her join our already incredible and experienced Nursery Team.

The first few weeks have been spent settling new and returning children back into the daily routine of our Nursery and it's been lovely to see new friendships blossoming already.

Understanding values begins in Nursery and the children discussed and created our 'Valued Behaviours' and we began making pictorial representations of these to put on display as reminders – we made a large heart to represent kind hands and kind feet.

## Acorn Nursery news cont...

We also made and decorated a new Cross with sparkly gems for the wall above our Spiritual Table. Our older children went to Church for our Harvest Festival Service and displayed our value of respect beautifully.

Every day is about exploration and discovery in Acorn Nursery and some of the activities we have enjoyed so far are – our teddy bears had a picnic in our Tuff Tray; we discovered the beans (and a tomato) that had grown in our planter, we watched the diggers outside on the High St; we had lots of fun creating using recycling materials and we've explored messy play and water play with sea animals outside. To understand how to behave with Jake our school dog we talked about how to be safe around all dogs and watched a presentation called 'What Woody Wants' from The Wood Green Animal Charity.

### Jake our School Dog:

Jake had a lovely Summer at home but missed seeing all the children and staff. He was VERY excited to be back at work!

With the children, we have refreshed how to be safe around dogs and how to look after Jake. Here he is helping me to get the weekly information board ready for our Parents/Carers as they walk into school.



### Our Value for October is Co-operation:

**In school**, we will learn that co-operation is everyone's responsibility. We will also discuss how co-operation can take courage and willpower to achieve. Through stories we read in our daily Worship (Assemblies) and our Class Worship activities, children will learn that co-operation requires us to recognise the unique role of every individual, whilst keeping a sincere and positive attitude. We also hope to realise that those who co-operate with others will find that others co-operate with them!

**At home**, you could tackle a jigsaw puzzle or task (like sorting out the garden or clearing out the garage) that requires the whole household to co-operate to get the job done! Understanding the importance of and practising taking turns in a game also helps children to understand that everyone has a role to play in order to make the game work and that patience and waiting is sometimes required to do this 😊.

# Clophill Parish Council

## Ralph Brough - Chairman's Award

At a recent informal ceremony at St Marys Church, the Chairman of Clophill Parish Council, Cllr Steve Rodell, was very pleased to present Cllr Ralph Brough with the Chairman's Prize.

This is in recognition of Ralph's many years of outstanding service to Clophill Parish. The Parish Council is keen to receive further nominations to recognise the often unseen excellent volunteering that happens within the village. We do have a list of unsuspecting nominees! Further emailed suggestions with reasons please to [clerk@clophill-pc.gov.uk](mailto:clerk@clophill-pc.gov.uk).



## Tree debris in old Churchyard

It was agreed to accept a local resident's offer.

## Neighbourhood Plan

A Report was given by the Chairman on the recent working party meeting held. Actions were agreed and meetings will be held monthly. Please keep an eye out for updates on how you can input to our Neighbourhood Plan.

## Irenes Wood Tree Report

Work will be done on Irenes Wood in November. The school will be notified of the exact date it will start.

## ROSPA report

3 quotes were shared to replace the slide. A best price will be negotiated with minimal matting on top of the mound.

## Planning Applications:

**CB/24/02058/FULL** 2 Howard Mews

**Proposal:** Single storey front porch extension within canopy area. **NO COMMENT**

**CB/24/01781/FULL** 26 High Street

**Proposal:** Pitched roof to replace flat roof above garage front and rear with rear canopy for log store. Open front porch and external improvements including fenestration and solar panels. **NO COMMENT**

# Clophill Parish Council cont...

## Planning Applications: cont...

**CB/24/02237/FULL** 41 High Street

**Proposal:** Single storey rear extension following demolition of existing conservatory. **SUPPORT**

**CB/24/02292/FULL** Chollerford House, 45 Shefford Road

**Proposal:** Erection of a detached dwelling and associated works. **NO COMMENT**

## Appeal Notices:

**APP/P0240/W/24/3345940:** Mouse Farm, Shefford Road

**For information, no decision required**

**APP/P0240/C/23/3326745 A - 3326746 B** Land South Of Top Farm, Shefford Road

**For information, no decision required: Hearing held in Sept**

## Enforcement Matter:

**'Plotters Land' Off Great Lane** – now an Enforcement Case with CBC.

**The next meeting will be held on 22nd October, 7:45pm  
at the Methodist Church.**

## Grand Jumble Sale in aid of Sue Ryder St John's Hospice at Moggerhanger



palliative,  
neurological  
and bereavement  
support

**7pm Friday 11th October 2024 - Clophill Village Hall**

Admission 50p per adult. Children are free.

Refreshments will be served.

All proceeds will be donated directly to the Hospice in Moggerhanger.

We'd greatly appreciate donations ahead of the event if you are not able to store them. Contact [Richard.sue.pearson@gmail.com](mailto:Richard.sue.pearson@gmail.com) or ring 861110.

**Look forward to seeing you there!!**

# Claphill Preschool News

## Hello everyone,

We have been surviving the weather with our children coming in brilliantly prepared each day in their waterproofs. Everyone learns quickly that to be able to get the most out of our outdoor setting you have to be prepared, children and staff alike; that means good base layers and an effective set of waterproofs with all the accessories to keep everyone warm and dry. Chris was able to race up to preschool when the rains hit and rescue Simon and Theodore (guinea pigs) to higher ground, great job Chris!

This term we have been introducing the new children to the setting, they have been building bonds with staff and staff in turn have been supporting interaction and friendship building between the children.

Julie has been performing on our wooden stage with lots of singing and dancing, the children have been joining in and performing their own renditions; great for confidence building and self-expression.

The children have also designed their own shop called the Ice Cream Treat Shop! They have written their own menus, drawn pictures of the food and of course made a price list, a great way to combine literacy, maths and to develop creative role play.



The children have been loading up the wheelbarrows to refill the sandpit and there has been lots of role play with new resources of ice cream cones, brick moulds and digging for dinosaur bones. This type of social play really lends itself to children collaborating and engaging with each other.

Of course, this time of year lends itself to lots of working our allotment and nature garden, the children have been pulling up the weeds and getting everything tidy. They also harvested seeds from the dried-up seed pods of lots of the plants ready to sow for next year. The children have also been harvesting what is left in the allotment to eat and have been picking the tomatoes and apples. We had some leftover ripe bananas from snack time going black so the children made banana bread, yum!

# Clophill Preschool News cont...

We have been down to the Methodist church with the Fledglings to celebrate harvest with Vicar Silas. We always enjoy his company, he has a wonderful rapport with the children and has become such an integral part of our preschool community, thank you Silas. Thank you also to our parents for their kind donations of food which our Adventure Friday group delivered to him.

When a new year begins, we work really hard at settling the new children into us, it can be quite daunting for some children to leave parents for the first time; it can feel quite overwhelming when you are small. What has been lovely to see this year is how beautifully the new staff and old have supported the new children seamlessly into us as well as how well our existing children have welcomed them; we have noticed how much they have matured over the summer. We look forward to all the adventures this year brings!

---

## ST. MARY'S CHURCH NEWS

It was a long time coming and seemed to be over in a flash! For nearly a year we had been planning our 175<sup>th</sup> Anniversary celebration, and over that time it developed into something very special. Of course, we were celebrating the "new" church, but it's important to remember that for about 800 years before, countless thousands of Clophill Christians toiled faithfully up the hill to the old church, keeping the faith alive through all the upheavals of those centuries.



The whole event was an amazing success from concept to fruition, with so many people willingly bringing their expertise, whether it was Clophill and District Flower Club, whose wonderful arrangements interpreted virtually every part of the church from the lych gate to the bells via the font and the altar, to Colin Watt whose history display kept our visitors enthralled. Thanks are also due to the sponsors whose generosity meant that all expenses were covered and all donations and refreshment sales resulted in more than £1,500 for church funds. So, a huge thank you to all you who came, both for your donations and the wonderful comments you gave us. We were honoured that one of the Deputy Lords Lieutenant, Dame Professor Helen Atkinson, officially opened the exhibition at the Preview Evening on the Friday, and that the Bishop of Bedford celebrated our Festival Parish Communion on the Sunday. Thanks too to those who provided the choir to enhance the service.

So, here's to the next 175 years of St. Mary's Church! It's up to us and those who come after us to continue to keep the faith alive and thriving in Clophill.

You may have noticed that work has finally begun on the repointing of the church. We started raising the funds for this necessary work in 2019!



## Katherine Concerts - October 2024.

A weekend of classical music performed by international artists.

Tickets available via <http://www.ticketsource.co.uk/Katherine-Concerts>

**Friday 25th** - Gabrielè Sutkutė (piano) with post-concert Coffee and Petit-Fours.

**8pm Ampthill Methodist Church**

**Saturday 26th** - Basil Alter & Zany Denyer (violin & piano) with post-concert Coffee and Cake.

**10.30am Ampthill Methodist Church**

**Saturday 26th** - Versa Winds 'Music from the Americas and beyond' with pre-concert Wine and Dine.

**8.15pm (concert) St. Andrew's Church, Ampthill**

**Sunday 27th** - Elizaveta Velikhova (piano) with post-recital Tea and Cake.

**2pm Ampthill Methodist Church**

### In Memoriam

News has come to Clophill recently of the deaths of 2 village stalwarts of some years ago, whom many of you will remember.

Firstly, we heard that **Barry Inskip** had died. Barry was a local boy who lived in Readshill, was locally educated and a lifelong supporter of Luton Town. He was also an active member of St. Mary's Church. He was a young man when the church roof had to be removed, and in order to help raise funds for it he decided to start a magazine, which he called "Action" He edited, duplicated and distributed it across the village. He also organised dances with Ann Jeffrey which had to be held in Maulden as Clophill didn't at that time have a suitable hall. As the need receded and technology improved he oversaw the change to "Outlook" and finally to "Spotlight". So, we have Barry to thank for our magazine.

When Barry married an Ampthill girl, Lorraine, they moved away and ran a guest house in Cleethorpes until their retirement about 5 years ago. He died in May at the age of 76, and sadly for their daughter, Lorraine died a few weeks later.

Next we heard of the death of **Sally Myers**, whom many of you will remember as the long-serving Brown Owl of our local Brownie Pack. She may also have started it. Sally lived with her husband, known as Sam, and her 3 sons in "Waybak" in Little Lane. She was active in other organisations, especially the WI. She was also a member of the Methodist Church.

Very sadly she suffered the double loss of her middle son Andrew and a few years later of Sam. She moved from the bungalow to one of the cottages on the High Street at the bottom of Church Path. A few years later she developed dementia and moved to a Care Home in Shefford, where her friends were able to visit her. Her family then moved her elsewhere and we lost touch. But we never forgot her, often asking if anyone had any news of her. That news came when the church had a request for her ashes to be interred with Sam and Andrew in the Garden of Rest, which will happen soon.



**Monday 7th October 2024**

## **Tales from Bedfordshire Churches – The Admiral, The Rector and Long John Silver**



**All Saints, Little Staughton**



**St Leonards, Old Warden**

The tales include the story of Admiral Byng, Rev Edward Drax-Free of Sutton and the last resting place of the infamous pirate from Treasure Island (based on a real person).

**Speaker:** David Longman

The talk will also be broadcast live via Zoom to Society members.

Flitwick Library Lecture Theatre, MK45 1QJ, 7:30 for 7:45 pm start.

Members are free, visitors are very welcome £5.00 payable at the door.

**November 4th** – Early Bedford and its Castle – Margaret Butt

**December 2nd** – Mowing a Path Through Life – Andrew Grout

**[www.adalhs.org.uk](http://www.adalhs.org.uk)**

It has been such an exciting and busy month at The Fledglings. One of the highlights was our trip to the Harvest Festival at the Methodist Church. We went along with the Adventure Friday children from Clophill Preschool, and had a lovely time together. The children got involved in the celebrations; bringing donations, making autumnal bouquets for family, singing a song for the preschool children; and some great chats about being thankful and helping others. It was such a nice way to feel part of the community.



On the topic of gratitude, we made another visit to our good friends at Beverley Court. The children had a blast making cards for the residents, and we spent time talking about all the things we're grateful for. It's always heart-warming to see how much joy these little acts of kindness can bring.

We have also been embracing the autumn season by going on some exciting autumn hunts, collecting berries to use for painting. It turned into a bit of a science experiment as we tested which berries made the best paint. The children quickly discovered that raspberries give the brightest colour, but they leave behind quite a few seeds. On the other hand, blackberries offer thicker coverage and fewer seeds, making them perfect for painting. Armed with this new knowledge, the children took on the role of teachers when we hosted a berry painting session at The Clophill Parent and Toddler Group. They showed the toddlers how to mash up the berries to create the best paint, and it was such a fun and messy way to share what they had learned!



In the kitchen, we have been cooking up a storm! We've made everything from chicken pie to apple crumble, and of course, pancakes for our Friday breakfast treat. The kids love getting involved, and it's been great seeing them learn new skills while having fun. There's nothing quite like the excitement of flipping pancakes on a Friday morning!

The change in weather hasn't slowed us down either. After some heavy rain, the children turned our outdoor space into a water playground! They made waterslides, waterfalls, and even a little swimming pool for the birds. It was such a creative use of the space, and they absolutely loved it. Watching them work together to build their own little water world was fantastic.

All in all, the start of autumn has been full of creativity, fun, and community spirit. We can't wait to see what the rest of the term brings, and we're looking forward to more exciting adventures with the children!

**Greensands Community**  
**Methodist Church**  
**Clophill Hub**

**Coffee and Croissants**  
**Saturday 12th October**  
**10am to 12 noon**



Also to be held on  
Saturday 9th November  
Saturday 7th December  
(Christmas Coffee and Croissants)  
All Welcome

## Parish Registers for October

### 1824

#### **Marriages**

- (?) William Peck/Pack to Charlotte Taylor.  
(?) Samuel Millard to Alice Read.

#### **Burials**

- 09 Sarah Conquest (?) widow of James.  
13 Charlotte d of James and Elizabeth Wiffin, baptised in Feb.

### 1874

#### **Baptisms**

- 25 John, son of John and Kate Eliza Stimson.

#### **Marriages**

- 09 Joseph Sharman, 22 to Emma Payne.  
14 John Juffs, 22, baker, to Charlotte Brightman (?) 23.  
(The Juffs family ran the bakery on the Green).  
21 Thomas Bridgeman (?) 23, gardener, to Jane Garner, 20.

#### **Burials**

- 18 (?) Chapman, aged 1.

### 1924

#### **Baptisms**

- 05 Raymond, s of Philip and Ellen Gudgin, father a roadman.  
Albert Raymond, s of Benjamin and Florence Peat.

No marriages or burials recorded.

### 1974

#### **Baptisms**

- 20 Thalia Lorenza Vosper.

#### **Burials**

- 09 Hilda Louise Spurge.  
18 Bertie William Collis, 68.

---

### ST. MARY'S CHURCH REGISTERS AUGUST 2024

#### **Funeral**

Aug 27 John Holmden, 91, followed by Burial of Ashes on Sept 12.

---



Wildlife Trust for  
**Beds, Cambs  
& Northants**  
Flit Vale Local Group



# Wildlife walks & talks

## October

**October 6<sup>th</sup> Sunday - Ickwell Green - 10.00am start  
and**

**October 20th Sunday - Ampthill Park - 10.00am start**

### **Seed Collections with Colin Carpenter**

Meet at **Ickwell Green** from 9.30am, there is plenty of parking nearby. We will be collecting English Oak, Beech, Hornbeam, Hawthorn, Sweet Chestnut, Small-leaved Lime and Hazel.

Park and meet at **Ampthill Park's West Car Park** (the one nearest the A507) from 9.30am.

On both days, Colin will be around until 3.00pm, so if you want to stay until then, please bring a packed lunch.

No charge for helping with seed collections, but donations welcome.

Booking for outdoor Flit Vale events is essential, as places are limited.

Please contact Ann by email: [flitvale.info@gmail.com](mailto:flitvale.info@gmail.com) or

Phone (leave a message or text if you prefer) 075801 78889 to reserve your place.

The Wildlife Trust for Beds, Cambs & Northants

Registered charity number: 1000412

[www.wildlifebcn.org](http://www.wildlifebcn.org)

Flit Vale Local Group

[www.wildlifebcn.org/flit-vale-local-group](http://www.wildlifebcn.org/flit-vale-local-group)

# What's on in and around Clophill



## OCTOBER

**Friday 11<sup>th</sup>**

**Clophill Jumble Sale**, Village Hall, 7pm. *See poster.*

**Saturday 12<sup>th</sup>**

**Coffee and Croissants**, Methodist Church, 10am – 12noon. *See poster.*



## NOVEMBER

**Saturday 9<sup>th</sup>**

**Coffee and Croissants**, Methodist Church, 10am – 12noon. *See poster.*

**Plus....**

**Weekdays during term time**

\* Clophill Community Hub is open, Village Hall, 9am to 3pm.

**Also open on Saturdays 10:30am to 2:30pm.**

**Mondays...**

\* Greensand Community Choir, St. Mary's Church, 7:30-9pm.

**Tuesdays... in school holidays - 2025**

\* Clophill Preschool, Stay and Play 10am – 12noon, Village Hall.

Dates TBA in a later issue.

**Wednesdays...**

\* Tea and Chat, Greensand Community Methodist Church, 10:30am – 12noon.

\* Beverley Court Bingo Night, in the Residents lounge, 7pm. All welcome.

**Thursdays...**

\* Thursday Leisure Club – TLC – St Mary's Church, 2pm.

**Fridays ...**

\* Little Saplings, Stay and Play 9:30am – 11:00am, Acorn Nursery at St. Mary's School.

**Fridays... during term time**

\* Clophill Parent & Toddler Group 10am – 11:30am, Village Hall.



## CHURCH SERVICES

**Regular services at St Mary's Church, Clophill...**

1st Sunday                8am, Holy Communion and 11am, Family Praise

Other Sundays        11am, Parish Communion

**Regular services at Greensand Community Methodist Church, Clophill...**

Weekly Worship at the Church, Sundays at 10:30am.



# Useful numbers

<b>Gas (Emergency)</b>			0800 111999
<b>Electricity (Emergency)</b>			0800 7838838
<b>Emergency Fire/Police/Ambulance</b>			999
<b>Water/Sewage (Anglian Water)</b>			0845 7145145
<b>Telephone</b>		(Customer Services) 150	(Faults) 151
<b>Highways Department (Central Bedfordshire Council)</b>			0300 3008049
<b>Benefits Agency (Bedford office)</b>			01234 361500
<b>Registrar's Office (Births/deaths/marriages)</b>			0300 3008089
<b>Rail (Enquiries)</b>			0845 7484950
<b>Buses</b>	01234 262151	(Link A Ride) 01525 840511	(Flittabus) 01582 406561
<b>Luton Airport</b>			01582 405100
<b>Swimming</b>		(Flitwick) 01525 717744	(Robinson Pool) 01234 212479
<b>LOCAL GOVERNMENT</b>			
<b>Central Beds Offices (Chicksands)</b>			0300 300 8000
<b>Mid-Bed; MP</b>		Alistair Strathern	TBA
<b>Central Bedfordshire Councillors</b>		Susan Clinch	0300 300 8516
		Gary Summerfield	0300 300 8561
		Mark Smith	0300 300 8541
<b>Clophill Parish Council</b>	(Clerk) Heather Myott	clerk@clophill-pc.gov.uk	07888 685 886
<b>HOSPITALS</b>			
<b>Bedford (North &amp; South)</b>	01234 355122	Admissions	01234 261150
		Appointments	01234 359012
<b>Luton &amp; Dunstable</b>			0845 1270127
<b>DOCTOR'S CLINICS</b>			
<b>Amphill</b>	(Houghton Close) 01525 300898	(Oliver Street)	01525 631395
		(Greensands)	01525 631390
<b>Shefford</b>	Enquiries 01462 818620	Appointments	01462 810034
<b>Barton</b>	01582 528700	Flitwick	01525 715300
<b>POLICE</b>		Non Emergency	101
<b>County Police HQ</b>			01234 841212
<b>Amphill Station</b>			101
<b>CHURCHES</b>			
<b>St Mary's Parish Church</b>			
	Revd Cannon Lynda Klimas	rev.l.klimas@btinternet.com	01525 403139
	(Church Warden) Mrs Anne Shegog	anneshegog@gmail.com	01525 864868
<b>St Francis RC Church, Shefford</b>			01452 813436
<b>Clophill Methodist Church</b>	Revd Silas Wood, email: swood11@me.com,		01525 571392
	Mr John Errick		01525 860695
<b>Baptist Churches</b>		(Maulden) Ian Crawford	01525 634325
		(Shefford) Hazel Arnold	01462 812564
<b>SCHOOLS</b>			
<b>St Mary's C of E Lower School, Nursery &amp; Preschool (Headteacher Mrs K Bingley)</b>			01525 860206
<b>Harlington Upper School, Harlington</b>			01525 755100
<b>Preschool</b>	clophillpreschool@gmail.com (Chris) 07936 006381 or (Imogen)		07765 887868
<b>Redborne Upper School, Amphill</b>			01525 404462
<b>Robert Bloomfield Middle School, Shefford</b>			01462 628800

## Village groups

Beverley Court		860920
Brownies	<a href="mailto:enquiryym.girlguiding.org.uk">enquiryym.girlguiding.org.uk</a>	
Clophill Community Care	Duty Contact	07791 773705
Clophill Heritage Trust	Ali Bradbury	07894 710001
Clophill Parent and Toddler Group		
	Imogen	07765 887868
Clophill Preschool	Imogen	07765 887868
	Chris	07936 006381
Clophill St Mary's C of E Lower School, Nursery and Preschool		
	Tracy Hayes	860206
Clophill United Charities	Val Martin	07845 731134
Conservation Group	Brian Adams	862297
Flower Club	Gillian Hill	860539
Funzone After School Club		07903 167493
Greensand Community Choir	Luke	07975 520085
Indoor Carpet Bowls	Tony Meredith	860754
Messy Church	Victoria Higgins	07920 568861
	<a href="mailto:victoriajhiggins@hotmail.co.uk">victoriajhiggins@hotmail.co.uk</a>	
Friends of St Mary's (FOSM)	Mary Milne and Jenny Garnham	
	<a href="mailto:fosmclophill@gmail.com">fosmclophill@gmail.com</a>	
Scouts and Cubs	<a href="http://www.scouts.org.uk/get-involved">www.scouts.org.uk/get-involved</a>	
Tea and Chat	Anita Errick	860695
Village Hall Booking Secretary	Marylin Browning	07821 643936

## Clophill United Charities

(Registered Charity No. 200034).



**CLOPHILL UNITED CHARITIES IS HERE TO PROVIDE  
FINANCIAL HELP TO THOSE PEOPLE LIVING IN OUR VILLAGE WHO MAY  
NEED IT IN DIFFICULT TIMES.**

Through the forethought and benevolence of residents and friends of former centuries, the current Trustees of Clophill United Charities are able to continue the tradition of helping Clophill residents. They are well aware that at the start of the new school term there might well be unforeseen expenses for parents of children in school.

**Where these require extra financial assistance, we might be able to help and our Clerk, Val Martin would welcome applications.**

**ALL ENQUIRIES ARE HANDLED IN STRICT CONFIDENCE.**

**Tel: 07845 731134 or email [CUCclerk@gmail.com](mailto:CUCclerk@gmail.com).**

# Home

is where the heart is  
*Let's keep it there™*



## Care in your home, just as you like it.

You may be in a situation where you need an extra pair of hands, or you may have complex needs that require dedicated care.

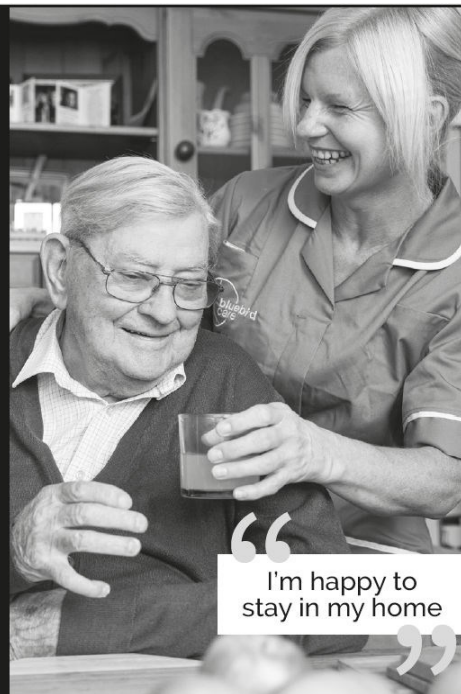
Our well-trusted care service ranges from a 30-minute daily visit through to full Live-in care.

**Call our friendly team today.**

Bluebird Care Central Bedfordshire

**01525 713389**

[bluebirdcare.co.uk/central-bedfordshire](http://bluebirdcare.co.uk/central-bedfordshire)  
[centralbedfordshire@bluebirdcare.co.uk](mailto:centralbedfordshire@bluebirdcare.co.uk)



"I'm happy to stay in my home"



## AMPTHILL & FLITWICK PHYSIOTHERAPY CLINIC

Tel: 01525 720882

[www.chartered-physiotherapy.co.uk](http://www.chartered-physiotherapy.co.uk)

[Info@anfphysio.co.uk](mailto:Info@anfphysio.co.uk)

**1 Kings Road Flitwick MK45 1ED**

**Helping you get back on track**

We offer the very best hands-on physiotherapy treatment

Neck/ Back/ Shoulder/Knee pain

Headaches/Migraines/Sciatica

Arthritis and all joint pain

Whiplash/RSI/Osteoporosis/Sports injuries

Vertigo and dizziness/Posture training and ergonomics

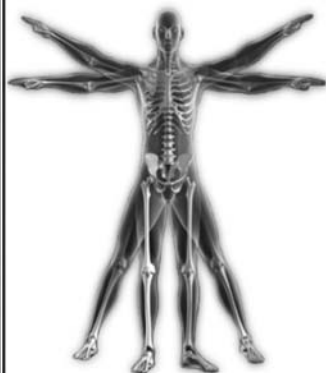
Long Covid

**WE ARE PROVIDERS FOR MOST INSURANCE COMPANIES**

**We also offer complementary treatments:**

Acupuncture/Chinese medicine

Clinical Psychology/Deep Tissue Massage



# Chapman & Kirby Heating

**Gas, Plumbing & Heating Installations**



**Gas Safe Registered**

**Boiler Servicing & Maintenance**

**Call us now on: 07831 132308**

**Email: [info@chapmanandkirbyheating.co.uk](mailto:info@chapmanandkirbyheating.co.uk)**

11 Lyall Close, Flitwick, Beds., MK45 1JB



## ACCOUNTING SERVICES

Providing a **Much Better** service for **Mid Beds** since 2000

If you are **Self-employed** or a **Small Business** and require assistance with  
**Accounts, HMRC tax returns, VAT**

we offer a total confidential service at competitive rates

Contact T: 01525 861087 M: 07714189994 E: [mbaccounts@btinternet.com](mailto:mbaccounts@btinternet.com)

Telephone

**01525  
860526**

## The Stone Jug

**A Free House**

BACK STREET, CLOPHILL

### A Proper Pub for Proper People

A family run village 'boozer' serving up great value, quality lunches that will fill you up without emptying your wallet! A pub is for 12 months of the year, 365 days and we're here for you on each and every one of them!

- 5 real ales, including 3 guest pumps that change frequently (see our Facebook page for details)
- selection of wines and Prosecco by the glass – or even better, by the bottle
- home-cooked lunches Tues-Sat, 12pm-2.30pm



### REMEMBER OUR MOTTO

**"A VISIT TO THE JUG IS BETTER THAN GOING TO A PUB"**

**CHEERS JOYCE, VIKKI & MARK**

[www.stonejug.co.uk](http://www.stonejug.co.uk)

[www.facebook.com/thestonejugclophill](http://www.facebook.com/thestonejugclophill)

# Little Saplings Stay and Play Group

FREE refreshments  
for ALL!



Early Years Experts,  
Activities and FREE  
weekly raffle

**Playgroup for Babies and Toddlers up to 4 years old!**

**Where?** Acorn Nursery at St. Mary's Lower School  
(MK45 4BE)

**When?** Friday's 09:30-11:00

**How much?** £5 per child (additional child £2.50) Babies  
up to 9 months are FREE! First session is also FREE!



## A Family Vet for Family Pets

We are a family-owned veterinary practice in the centre of Ampt Hill. We believe in providing fantastic stress-free care tailored to individual pets and owners.

We have now launched our Pet Health Plan, to help make preventative health care for your pet as easy as possible.

For more information:

Visit our website at

[www.ampthillvets.co.uk](http://www.ampthillvets.co.uk)

or

Phone us on 01525 582002

or

Pop in for a chat and to meet the  
team



We offer a **FREE** review of your existing Will.

### **Having a Will in place provides peace of mind**

So many people have died without a Will thus increasing the stress and expense (and often the tax) that their families face.

## **SEVEN GOOD REASONS TO REVIEW YOUR WILL**

- ◇ Have you married or entered Registered Civil Partnership since the date of your last Will? If so, your Will is annulled.
- ◇ If you have no valid Will, the State's distribution of your assets may not be as you would have wished and could result in higher tax.
- ◇ Was your Will home made? If so, you could be storing up difficulties for the family and higher tax could be payable.
- ◇ Executors are personally liable. Are they still willing and able?
- ◇ Do you have children under 18? If so, you need to nominate guardians or they become the responsibility of the Local Authority
- ◇ Will your family be able to claim all tax allowances? Many Wills written before 2017 do not allow the full Nil Rate Band to be claimed.
- ◇ Are you in a second marriage? Special provision should be made for blended families.

- ◆ We quote our fixed fees up front and believe in plain English
- ◆ We meet with you in informal surroundings and spend a lot of time making sure we get everything right and you are happy
- ◆ We advise on the most tax effective solutions
- ◆ Our clients tell us that their experience has been a pleasant one and they are extremely glad that they have the necessary documents in place.

**Please phone Susan Shaw now:  
Shaws Wills and Trusts 01525 862053**



# DAVID JAMES



WWW.DAVIDJAMESKITCHENS.CO.UK



MANUFACTURE DESIGN INSTALLATION

We are a local manufacturer of beautiful kitchens. We sell direct to save you money. The factory showroom has an extensive display of different styles.

**SAVINGS ON ALL KITCHENS**

**& Up To 25% Off Top Brand Appliances**

01525 722230 PULLOXHILL BEDS MK45 5EU

# SCENTSY



INDEPENDENT CONSULTANT



Join the wonderful world of Scentsy for all your home fragrance, wax warmers, cleaning products and so much more!!

- Plug in wax warmers - no flame, smoke or soot!
- All warmers come with a Lifetime guarantee!
- Premium quality paraffin wax scent bars!



@Tracy's Scentsy Treasures



tracyscenttreasures.scentsy.co.uk



# APN ELECTRICAL

- ✓ Rewires - Extensions, New Builds & Renovations
- ✓ Consumer Unit Upgrades
- ✓ LED Lighting Upgrades & Installations
- ✓ Outside lights & Security Lighting
- ✓ Power Supplies to Outbuildings, Sheds & Garages
- ✓ Smoke, Heat & Co2 Detectors
- ✓ Fault-Finding & Repairs
- ✓ Boiler Controls
- ✓ EICRs (Electrical Inspection Condition Reports)
- ✓ EV Charging Points



- ✓ Free no obligation quotes
- ✓ Friendly and reliable service
- ✓ Fully insured

**CONTACT US  
FOR A FREE QUOTE...**



ALEX NEW



07531765164



Apn.electrical@outlook.com





# 6 WEEK CHALLENGE



- **TRAIN WITH US 3 TIMES A WEEK ON OUR GROUP TRAINING PROGRAM**
- **PERSONAL NUTRITION COACHING AND ACCOUNTABILITY**
- **BUILD STRENGTH, FITNESS AND GET IN GREAT SHAPE**

## **WHERE IS THE GYM?**

**OUR GYM IS BASED AT UNIT 3, LONDON LANE, HAYNES WEST END, BEDFORD, MK45 3RA**

## **WHEN ARE THE SESSIONS?**

**WE HAVE SESSIONS AVAILABLE EVERY WEEKDAY MORNING (6-11AM) AND EVENING (5-9PM) PLUS SATURDAY MORNINGS (7-11AM). YOU CAN COME TO WHICHEVER SESSIONS SUIT YOU BEST.**

## **DO I NEED TO BE FIT?**

**NO - WE'LL MAKE SURE YOU'RE WORKING AT A PACE THAT MATCHES YOUR EXPERIENCE AND FITNESS LEVEL.**

## **WHAT HAPPENS AFTER?**

**IT'S YOUR CHOICE - YOU CAN BECOME A FULL MEMBER OR IF YOU DECIDE WE'RE NOT FOR YOU, WE CAN PART WAYS WITH NO HARD FEELINGS.**

**INFO@TRIBESTRENGTHGYM.COM**

**TRIBESTRENGTHGYM**

**WWW.TRIBESTRENGTHGYM.COM**

**CALL US ON 07500006408**



# THE AVENUE KITCHEN

**NEW COFFEE SHOP NOW OPEN IN WREST PARK  
WITH INSIDE AND OUTSIDE SEATING AVAILABLE**



**DOGS WELCOME 🐾**

**POP IN FOR BREAKFAST, LIGHT LUNCHES, OR TEA  
AND HOMEMADE CAKE**

**PLEASE CHECK OUR SOCIAL MEDIA FOR CURRENT  
OPENING TIMES**


** THE AVENUE KITCHEN  
01525 864400**

**BUILDING 59, WREST PARK, SILSOE, MK45 4HS**

Stray Cat  
Rescue



We are a registered charity, run by volunteers. We are based in rural Bedfordshire and have been rehoming and rehabilitating cats for over 20 years.  
We always have lots of beautiful cats waiting for loving homes.

*If you're looking to adopt, please check out our social media pages & get in touch with us!* 



facebook.com/StrayCatRescue



straycatrescue



www.straycatrescue.org.uk

PURE

Joinery Solutions

Bespoke carpentry and joinery solutions serving homes in Clophill and the surrounding area. Fully qualified with over 40 years' experience. We specialise in creating quality bespoke storage solutions, door hanging, fitting wooden flooring and refurbishing staircases, alongside a wide range of general carpentry and joinery services.

[info@purejoinerysolutions.co.uk](mailto:info@purejoinerysolutions.co.uk)

07786 463217



**Tammys' Talons**

Nail Technician  
Gel. Manicure and Pedicure

IZABELLE HAMMOND  
NAILTECHNICALS & COSMETICS  
CARGEL IZ by CARGEL

**Tammy Kirby**

Clophill, Bedfordshire, MK45 4AW

Tel : 07968379309

[tammystalons@gmail.com](mailto:tammystalons@gmail.com)

### ***Laptop & Computer***

Printer, Apple Mac, setup, Repair, Data Recovery, Internet, Wireless Network, Virus Infection, Hacked, Email setup, Home office computer problems. **NO FIX- NO FEE. Qualified & Experienced. 'We Come 2 You'**  
**01525306316- 07925338435** [Pclaprepairs@gmail.com](mailto:Pclaprepairs@gmail.com)

A new professional  
dog grooming salon in Clophill

Please contact Freya on  
**07503 923165**

**Freya's**   
DOG GROOMING

# LOCAL INDEPENDENT MORTGAGE ADVICE



- Access to the whole market
- Industry experts
- Personal service
- Vast experience
- Remortgage
- First time buyers
- Moving home
- Buy To Let



**THE  
MORTGAGE  
EXPERT**

[www.tmexpert.co.uk](http://www.tmexpert.co.uk)

*Contact your local independent mortgage expert: 01525 30 67 60*

*Endeavour House, Wrest Park, Silsoe MK45 4HS*

**YOUR HOME MAY BE REPOSSESSED IF YOU DO NOT KEEP UP REPAYMENTS ON YOUR MORTGAGE**

*We charge a fee of £495 for the straight forward mortgage application and up to £1,495 for the more complex ones.*

*Prior to application we will let you know when this becomes payable.*

*Please note we do not charge any fees upfront or for any initial advice.*



**WREST PARK TUTORS**  
Face-to-Face Tuition  
Maths, English, Science  
Year 1 to Year 11

- Expert tuition from qualified teachers
- Motivating computer programs
- Tailored to your child's level
- Fully equipped learning centre in the grounds of Wrest Park

**Our students develop confidence,  
resilience and independence.  
They love learning with us.**

**TUTORS NEEDED  
TO MEET STUDENT DEMAND**

**Enterprise House, Wrest Park, Silsoe**  
[wrestparktutors@gmail.com](mailto:wrestparktutors@gmail.com)

**f @wrestparktutors**

## E.T. Accountancy Services

Experienced Chartered Accountant and  
Chartered Tax adviser based in Clophill  
providing a full range of accountancy  
and taxation services to businesses  
and private individuals.

To arrange a free initial consultation  
please telephone me on 01525 590465  
or email [emma@et-accountancy.co.uk](mailto:emma@et-accountancy.co.uk)

**Chartered Accountant and  
Chartered Tax Adviser**

Emma Thoullass FCA CTA  
[www.et-accountancy.co.uk](http://www.et-accountancy.co.uk)

01525 590465

## Painter and Decorator

Call Chris : 07950714579



*do you want your  
home brightening up?*

*all interior & exterior work*

*no job too small!*

*free no obligation quote*

*25 years experience  
& fully insured*

*facebook: @christopherthepainter  
email: chris.minihane@btinternet.com*

## JK Garden and Landscape Services Ltd



**We offer...**



*full landscaping service*

*patios*

*fencing*

*decking*

*new lawns*

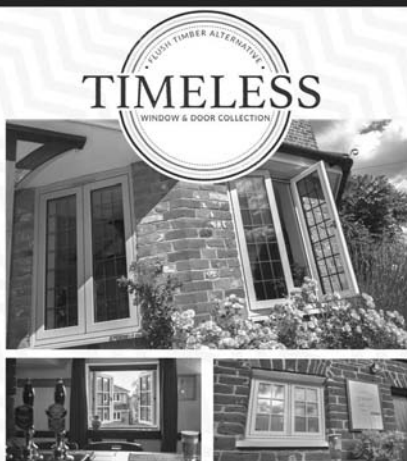
*driveways*

*all garden maintenance*

Contact us on **0791 2028254**  
or at **jkgardening@hotmail.co.uk**

You can also find us on Facebook

## Kings Windows



Available in a range of traditional colours  
Choose classic joints to look like wood  
Stunning handle options

## TIMELESS FLUSH TIMBER ALTERNATIVE WINDOWS

as seen in The Old Compasses & The Stone Jug

*available exclusively from  
Kings Windows*



**01582 882 800**  
**www.kingswindows.co.uk**



Lively,  
stimulating  
sessions

Great songs,  
Pop, musicals,  
folk, classical,  
world music  
and more

# Greensand Community Choir



**Mondays 7.30pm - 9pm,**  
St. Mary's Church, High Street,  
Clophill MK45 4BJ

No auditions,  
no need to read  
music

Come along and sing with your  
local community choir, for adults of all  
singing abilities

ISM  
- MUSIC -

e: [greensandcommunitychoir@gmail.com](mailto:greensandcommunitychoir@gmail.com)

t: 07975 520085

Find us on

Yellowpages.com



**Tel: 01525 861416**  
[www.thebluecat.net](http://www.thebluecat.net)

Find us on Facebook @thebluecatcattery  
or email us at [enquiries@thebluecat.net](mailto:enquiries@thebluecat.net)

The Bluecat is a luxury cattery  
set in the quiet area of Jacques Lane  
in Clophill. With just 14 cat chalets,  
we have time to fuss, pamper  
and play with your cat to its heart's  
content whilst in our care.  
Please call for further information.



- All aspects of plumbing
- Oil heating and maintenance
- Drainage
- Free quotations on all bathroom refits and renovations
- 24-hour callout

Telephone:  
**07789 693959**

Email:  
**jamieb535@  
googlemail.com**

*I specialise in  
bathroom design*

## Misty Double Glazing?

Over 30  
Years  
experience.  
FREE  
Quotes

Over 30  
Years  
experience.  
FREE  
Quotes

**KEEP YOUR WINDOW FRAMES...  
... WE JUST REPLACE THE GLASS!**

• UPVC • Aluminium • Or Wood

Because we replace just the glass the repair is a  
Fraction of the cost of a complete replacement window.

BEFORE



AFTER



**[mistydoubleglazing.co.uk](http://mistydoubleglazing.co.uk)**  
**QUALITY GLAZING SERVICES**  
**01525 876808**

**WE ALSO REPLACE BROKEN...**

• Glass • Handles • Hinges & Locks  
**AND REPAIR...Patio Doors & Conservatories!**



## Your dream Holiday is my priority

Based in Silsoe, I am your local travel advisor. Allow me to arrange your next holiday with care and lose the pain of planning. I'll take care of every last detail so you can explore with confidence and make memories to last a lifetime.

*Neil Forrester*

TRAVEL COUNSELLOR

**07479 479934**

neil.forrester@travelcounsellors.com  
travelcounsellors.co.uk/neil.forrester

The logo for 'the café', featuring the text 'the' in a small sans-serif font above 'café' in a larger sans-serif font. A stylized white fan-shaped icon is positioned between the two words. The entire logo is enclosed in a white rectangular border.

the  
café

Eastcotts Park,  
Wallis Way,  
Bedford, MK42 0PE  
01234 266 366

Visit

[www.peacockscafe.co.uk](http://www.peacockscafe.co.uk)  
for more details on our opening  
hours and to view our full menu.

**W&H PEACOCK**  
AUCTIONEERS & VALUERS

## The Cafe at W&H Peacock is **OPEN**

View the salerooms for our upcoming auctions and  
then relax with a coffee and a slice of cake.

Our unique cafe in Bedford Auction Centre with free wi-fi  
comfortably seats over 100 customers. We serve cooked  
breakfasts, paninis and sandwiches, light lunches and  
snacks plus a range of hot and cold drinks.





# LOCAL ALLOY WHEEL REFURBISHMENT



**Tel:**  
**01525**  
**860069**

**Alloy Wheel Repairs**

**Diamond Cut Alloy Wheels Repaired On Site**

**Powder Coat Primers & Lacquers**

**Fast Turnaround Alloy Wheel Welding**

**Tyres At Competitive Prices**

**NEW for 2015 - 4 Wheel Alignment Service**

**[www.mintalloys.co.uk](http://www.mintalloys.co.uk)**

## Welcome to Clophill St Mary's C of E Lower School and Nursery

We are a small, friendly, village Lower School, graded "Good" by Ofsted (2021), with close links to the local community.

We welcome children from 2 years to 9 years, supporting and nurturing each individual child AND teaching them about life-long Values.

Wrap around care available for all ages (breakfast and after-school care).

### Acorn Nursery

Preschool provision in a beautiful bespoke building and outdoor space! Providing 30 hours free childcare entitlement with wrap-around care too!



**EVERYONE is welcome at St. Mary's and you do not have to be a practicing Christian to attend our school.**

**We are first and foremost a Village School and Nursery-)**

To arrange a visit, please call: 01525 860206 or email: [generaladmin@clophillstmarysschool.co.uk](mailto:generaladmin@clophillstmarysschool.co.uk)

For more information visit: [www.clophillstmarysschool.co.uk](http://www.clophillstmarysschool.co.uk)



Select Travel Holidays

Home of Cruise Select

24A Mill Street, Bedford



Celebrity **X** Cruises\*

AT LEAST

**60%**

OFF 2ND GUEST\*

+ ADD DRINKS AND WI-FI FOR £59pp  
PER DAY ON EUROPEAN SAILINGS\*

+ RETURN FLIGHTS TO  
EUROPE FROM £199pp\*

\*TERMS & CONDITIONS APPLY

**BOOK BY 7 NOVEMBER 2024**

**Contact Us To Find Out More:**

**Tel: 01234 326778**

**sales@selecttravelholidays.co.uk**

**www.selecttravelholidays.co.uk**



BOOK WITH CONFIDENCE  
ABTA & ATOL protected



Prices are subject to availability. Save up to 60% off second guest on cruise sailing 4 September 2024 - 7 May 2026 (excluding Galapagos), applicable to all stateroom categories - booked by 7 November 2024. All-Included Upgrade for £59 for guests 1-2 (Classic Beverage & Basic Wi-Fi Package) available on all round-trip European sailings 2024-2026, applicable to insides up to Aqua Class, booked by 7 November 2024. Fly direct to Europe from £199pp applicable to European sailings 2 January 2025 - 21 December 2025, applicable to all stateroom categories, booked by 7 November. E&OE.

## **AVENUE17TRAINING**

**Experienced Training provider offering First Aid and Health & Safety training.**

**From Basic first aid to first responder level, dental BLS & ILS, fire safety**

**We can tailor courses to your sector requirements.**

**Regulated (RQF) and Vocational Technical Qualifications (VTQ)**

**A competitive price structure.**

**Contact us for a discussion or no obligation quote**

**Mark@avenue17training.co.uk**

**07917729293**

## A L & G ABBOTT

Funeral Directors

~ Established 1832 ~

### WITH YOU WHEN IT MATTERS MOST

An independent family business continuing to provide a caring & professional service to Bedford, Kempston & the surrounding villages.



- 24 Hour Personal Service
  - Bespoke Funerals
  - Private Chapels of rest
  - Green Burials
  - Home Arrangements
  - Civil Services Available
  - Bereavement Listening Service
- (Free to our families)



T: 01234 843222

[www.abbott-funerals.co.uk](http://www.abbott-funerals.co.uk)

[support@abbott-funerals.co.uk](mailto:support@abbott-funerals.co.uk)

150 BEDFORD ROAD, KEMPSTON, BEDFORDSHIRE, MK42 8BH

## Take out an annual ad in Clophill *SPOTLIGHT*

*Black & White per year*

This is one-half £123 Height 92 x Width 126 mm

Please email our Advertising Manager

[ads@clophillspotlight.co.uk](mailto:ads@clophillspotlight.co.uk)

Other sizes:-

A sixth of a page (H31mm x W126mm) £58

Quarter page (H92mm x W61mm) £75

A third of a page (H61mm x W126mm) £88

A full page is £230

# Residential Conveyancing

Experienced Local Consultant Conveyancer (Clophill)

**Michele Hosey**

**[michelehosey@photiades.com](mailto:michelehosey@photiades.com)**

**01525 300577**

Competitive legal costs, personable, efficient,  
strong communication, faster turnaround times

**Contact me for a free no obligation estimate  
or to discuss your specific requirements**

Recommended by Local Estate Agents

**photiades solicitors**  
FRIENDLY EFFICIENCY

L U N A

FINANCIAL PLANNING

How to use your pension pot wisely

## Do you have a plan?

Maybe you have several pension pots?

What about old employer's pension schemes?

We can help you make the right choice – either when you retire or to build your pot. You now have more choices than ever.

We make sure we take the time to understand your needs, goals and preferences before we make any recommendations.



For professional, friendly, financial advice contact us on:

01525 861803 | [john@hills-howson.co.uk](mailto:john@hills-howson.co.uk)  
Enterprise House, B52 Wrest Park, Silsoe MK45 4HS

Head Office | 4 North Road,  
Pontywaun, Newport NP11 7GA

# Auction Sales & Valuations

Valuation, collection and auction service  
of individual items through to complete  
property and commercial clearances.

Call for a free no obligation quote or  
email **info@peacockauction.co.uk**

## SALE ENTRIES NOW INVITED

Antique & Modern Furniture • Clocks • Books • Ceramics & Glassware • Pictures & Prints • Bicycles  
Jewellery & Watches • Collectables • Garage Tools & Equipment • Household Electrical Items • Office  
Furniture & Equipment • Retail Products & Stock • Vehicles • Horticultural & Commercial Equipment  
Building Materials • Garden Furniture & Effects

**www.peacockauction.co.uk**



**W&H PEACOCK**  
AUCTIONEERS & VALUERS  
**01234 266366**



Eastcotts Park,  
Wallis Way,  
Bedford,  
MK42 0PE

## THE COMPUTER MAN



Got a problem with your computer and don't know what to do?  
Suffering with a virus or spam?

**Don't hesitate!**

**Ring your local computer expert**

**Remote repairs or home visits**

(Day, evening & weekend)

**Lap top/desktop top loan**

(Free pick up & drop off in local area)

**Mobile phone repairs**

**SOCIAL  
DISTANCING  
OBSERVED**

**Gloves, masks and  
sanitiser available  
on request**

**Based in  
Amphill**

Contact Stephen Amos  
**07976 718567**  
Office/Admin 07527 740676  
[computerman.office@gmail.com](mailto:computerman.office@gmail.com)

**20  
YEARS**  
EXPERIENCE



# NEVILLE FUNERALS

We take care of the details, so you can say  
goodbye the way you want to.

NEVILLE. Because there is a difference.

## **AMPTHILL**

The Old Church, Flitwick Road MK45 2NT

t: 01525 406132

e: [amphill@nevillefuneralservice.com](mailto:amphill@nevillefuneralservice.com)

---

## **SHEFFORD**

24 Clifton Road SG17 5AE

t: 01462 813258

e: [shefford@nevillefuneralservice.com](mailto:shefford@nevillefuneralservice.com)

[www.nevillefuneralservice.com](http://www.nevillefuneralservice.com)



# HAPPY PLACE, RESTORED

If you love your lawn,  
you'll love GreenThumb.  
Our year-round treatments  
will give your grass  
the TLC it deserves,  
so you get a lawn you  
can feel good about.



**GreenThumb**  
LAWN TREATMENT SERVICE



Discover more at [greenthumb.co.uk](http://greenthumb.co.uk)

Scan  
here

Bedford & Huntingdon

01234 709345 or 01480 597432 [bedford@greenthumb.co.uk](mailto:bedford@greenthumb.co.uk)

Baths, Toilets &  
Showers  
Sinks and Taps  
Guttering  
Leaks and Burst Pipes  
Drainage  
Handyman jobs also



beta plumbing

Silsoe based  
No call out fee – free estimates  
Fully insured and guaranteed  
No job too small  
**07720 723653 01525 864859**  
[info@betaplumbing.co.uk](mailto:info@betaplumbing.co.uk)  
[www.betaplumbing.co.uk](http://www.betaplumbing.co.uk)

## TIM DOWNING

**Washing Machines Dishwashers Dryers Electric Ovens**  
**Repairs Servicing Sales**



Tel: Tim on Clophill 860148  
Mobile: 07969 545 276



A local family business offering a quality service at a competitive price

A member of the White Goods Trade Association  
Fully Insured Est. 1981



# Root 'n Branch

Your Local Friendly & Reliable Gardener

All aspects of Garden Maintenance undertaken  
• PRUNING • MOWING • WEEDING • PLANTING • HEDGING

Southfields, Shefford  
email: whooley@hotmail.co.uk

**Tel: 07771 537385**

Public Liability  
Insured



THE CONIFERS  
— CANINE HOTEL —

LUXURY  
ACCOMMODATION  
HOLISTIC FOOD SHOP

01525 860339

[www.the-conifers.co.uk](http://www.the-conifers.co.uk)



*Bathroom  
Vogue*

EST.  
1989

- Suppliers of traditional and modern equipment
- Working whirlpool & spa baths, power & steam shower systems on display
- Over 40 settings on display
- Complete installation service if required
- Personal friendly service from a family run business
- Wall and floor tiles
- Accessories
- Mirrors
- Bathroom furniture
- Heated towel rails
- Saunas
- Bathroom cabinets

**SHEFFORD 01462 627002**

[www.bathroomvogue.com](http://www.bathroomvogue.com)

Unit 4A, Shefford Industrial Park, St Francis Way, Shefford SG17 5DZ



# BURGLAR ALARMS

*New Alarms Fitted or Upgrade Existing Alarms*

## BURGLAR ALARMS

We fit New Alarms - Wired or Wireless Systems

*\*We can service and maintain your existing alarm\**

## CCTV

We fit high quality systems to maximise your security.

Access your CCTV via the internet or mobile.

## DOOR ENTRY

We fit a range of quality video and audio intercoms to suit your needs.

*We are a family run business with over 35 years experience in home security and crime prevention.*



[www.maximumsecuritysystems.co.uk](http://www.maximumsecuritysystems.co.uk)

Contact:

**01582 864138 / 07746 111520**

*For a free quote and consultation*



# NEWBURY FARM PLANTS

Plant Inspiration

NEWBURY FARM, AMPHILL ROAD, SILSOE MK45 4HB

OPENING HOURS - WED - SAT 9 - 5 & SUN 10 - 4

TEL: 01525 860048

**WIDE SELECTION OF BEAUTIFUL GARDEN PLANTS**



**RHS Gold Medal Winner 2023**

**NEW Pilates** classes based in **Houghton Conquest village**. Small group classes to ensure correct posture and alignment in a friendly **private studio**.

All abilities and ages welcome with equipment provided. Classes are 45 mins in length, including a warm-up, main session and closing stretch.

**Pilates is a low impact** form of exercise which is kind on the joints. Focusing on strengthening the **deepest core muscles** which support and wrap around the spine. There are many benefits to Pilates including the easing of lower back pain and reducing stress and anxiety.

- **Group Mat Classes** – Mon, Wed, Thurs & Friday 9.30am/10.30am, 6.30pm/7.30pm
- **121 Mat Pilates** Sessions available at request
- **121 Reformer sessions** – Body Control qualified, please enquire for available times
- **DM on Facebook, Instagram or email** – [info@thepilatesbox.co.uk](mailto:info@thepilatesbox.co.uk)

## Take out an annual ad in Clophill *SPOTLIGHT*

*Black & White per year*

This is one-half £123 Height 92 x Width 126 mm

Please email our Advertising Manager

[ads@clophillspotlight.co.uk](mailto:ads@clophillspotlight.co.uk)

Other sizes:-

A sixth of a page (H31mm x W126mm) £58

Quarter page (H92mm x W61mm) £75

A third of a page (H61mm x W126mm) £88

A full page is £230

## Hire Clophill Village Hall



Wedding Receptions  
Birthdays & Special Occasions  
Dances and Discos  
Club & Community Meetings & Activities

Phone: 07821 643 936

Mail: [Clophill.villagehall@gmail.com](mailto:Clophill.villagehall@gmail.com) Web: [www.clophillvillagehall.co.uk](http://www.clophillvillagehall.co.uk)

## ROGER STOREY

**YOUR LOCAL PAINTER AND DECORATOR**

Friendly and Reliable Service

Many Years Experience

Please phone: **01525 861253** or **07800 777615**

## ANDREW BAKER WINDOWS

9 SHEFFORD ROAD  
CLOPHILL BEDS  
MK45 4BT

SPECIALISING IN UPVC WINDOWS,  
DOORS, CONSERVATORIES,  
FASCIA, SOFFITS, GUTTERS AND  
CLADDING. ALSO AVAILABLE FOR CARPENTRY  
WORK. NO JOB TOO SMALL OR LARGE.

20 Years experience.  
Free local quotes.

**FENSA**

Fensa Registered  
FIVE YEAR GUARANTEE

Contact Andrew: 01525862804 / 07825017855

Email: [abakerwindows@gmail.com](mailto:abakerwindows@gmail.com)



# WOBURN COUNTRY FOODS THE GOURMET BUTCHER

**HAYNES WEST END - WOBURN SANDS**

## THE FARM SHOP, HAYNES WEST END

WEST END FARM, HAYNES WEST END, MK45 3RA  
BUTCHERS HOTLINE - 07845141969

## FROSTS FOODHALL WOBURN SANDS

NEWPORT ROAD, WOBURN SANDS, MK17 8UE  
BUTCHERS HOTLINE - 07754215335

## ORDER ONLINE

WOBURNCOUNTRYFOODS.COM

*Family Friendly, warm and  
welcoming golf club where  
everyone is welcome*



Cainhoe Wood  
GOLF CLUB

Brand New Seasonal Menu in our friendly clubhouse  
which is welcome to all!



New Sunday Menu  
perfect for all the family!



Sky Sports showing all the  
big sporting events!

JOL Golf Academy - individual and group  
lessons available from Beginner to  
Advanced!

Winter Prices: £17.50 Midweek  
£22.50 Weekend for 18 holes  
on our beautiful Manor Course



[www.cainhoewoodgolf.co.uk](http://www.cainhoewoodgolf.co.uk)



01525 860800

# Advertisers index

<b>Auctioneers &amp; valuers</b>		<b>Garden</b>		<b>Print Services</b>	
W&H Peacock	39	Green Thumb Lawn Treatment	41	Fidelity Design & print	IFC
<b>Bathroom Services</b>		JK Garden and Landscape Services	32	<b>Public Houses</b>	
Bathroom Vogue	42	Newbury Farm Plants	43	The Stone Jug	24
<b>Builders &amp; Carpenters</b>		Root 'n Branch	42	<b>Repair Services</b>	
PURE joinery solutions	30	<b>Health &amp; Beauty</b>		Tim Downing Repair Services	41
Stuart Benson Building Projects	IFC	Bluebird Care	23	<b>Schools</b>	
<b>Car Services/Repairs</b>		Amphill & Flitwick Physiotherapy	23	Clophill PreSchool	BC
A&F Motors Ltd	IFC	Pilates Box	44	Clophill St Mary's C of E	35
Mint Alloys	35	Tracy's Scentsy Treasures	27	Acorn Lower School and Nursery	35
TC Coomber Car Services	BC	Tammy's Talons	30	Little Saplings Stay and Play Group	25
<b>Choirs</b>		Tribe Strength Gym	28	<b>Sport</b>	
Greensand Community Choir	33	<b>Home Improvements</b>		Cainhoe Wood Golf Club	47
<b>Computer Services</b>		Christopher The Painter	32	<b>Security Services</b>	
The Computer Man	39	David James Kitchens	27	Maximum Security Systems	43
PCLap Repairs	30	Roger Storey - Painter & Decorator	45	<b>Travel Services</b>	
<b>Electrical Services</b>		<b>Legal</b>		Select Travel Holidays	36
APN Electrical	27	Photiades Solicitors	38	Travel Counsellor	34
<b>Financial Services</b>		Shaw's Wills	26	<b>Tuition</b>	
ET Accounting Services	31	<b>Pet &amp; Animal Services</b>		Avenue17Training	36
LUNA Financial Planning	38	The Conifers Canine Hotel	42	Wrest Park Tutors	31
MB Accounting Services	24	The Bluecat Luxury Cattery	33	<b>Village Hall</b>	
The Mortgage Expert	31	Amphill Veterinary Centre	25	Clophill Village Hall	45
<b>Food &amp; Refreshments</b>		Freyas Dog Grooming	30	<b>Windows/Replacement</b>	
Café at W&H Peacock	34	Stray Cat Rescue	30	Andrew Baker Windows	45
Woburn Country Foods	46	<b>Plumbing &amp; Drainage Services</b>		AW Windows	IBC
The Avenue Kitchen	29	Jamie, the happy plumber	33	Kings Windows	32
<b>Funeral Services</b>		Beta Plumbing	41	Misty Double Glazing	33
AL&G Abbot, Funeral Directors	37	Chapman & Kirby Heating	24		
Neville Funeral Service	40				

*IFC = Inside Front Cover IBC = Inside Back Cover BC = Back Cover*

## Love reading Spotlight?

Don't forget to mention us when you use a business that advertises in this magazine!

**This space is available for a new Advertiser.**

For more information and pricing please  
either email [ads@clophillspotlight.co.uk](mailto:ads@clophillspotlight.co.uk)  
or submit the contact form on the  
Spotlight website:

[www.clophillspotlight.co.uk/advertising-contact-form/](http://www.clophillspotlight.co.uk/advertising-contact-form/)

## NO PRESSURE SALES – YOU DEAL WITH THE OWNER FROM START TO FINISH



- ✓ A-rated windows as standard
- ✓ Composite doors
- ✓ High security
- ✓ Bifolding doors
- ✓ Conservatories
- ✓ Fascias, soffits and guttering
- ✓ Insurance-backed guarantee
- ✓ Fensa certificate



**Contact: ANDY WOOD**

**01582 536944 or 07796 272539**  
**sales@awwindows.co.uk**



See reviews from satisfied customers at [awwindows.co.uk](http://awwindows.co.uk)



# Clophill Preschool

We are a unique outdoor setting based in the rural grounds of Clophill Village Hall welcoming children from the age of 2 and offering a bespoke SEND provision.

Our passionate and experienced staff nurture every child and broaden their perspective, enrich their knowledge and spark the magic of wonder through a curriculum based in nature.



**Ofsted**  
Outstanding  
Provider

**Call or email to find out more**

07765 887868 or 07936 006381

[clohillpreschool@gmail.com](mailto:clohillpreschool@gmail.com)

[www.clohillpreschool.co.uk](http://www.clohillpreschool.co.uk)



Find us on  
**Facebook**





**MOT'S CLASS 4/5L/7**  
**CAR SERVICING & REPAIR**  
**TYRES & EXHAUSTS**  
**AIR CONDITIONING**  
**DIAGNOSTIC CODE READING**

**Collection  
& Delivery**  
SERVICE AVAILABLE  
*Please ask*

**AMPTHILL**  
**01525 406330**

**UNIT F, AMPTHILL INDUSTRIAL ESTATE, STATION ROAD, AMPTHILL, MK45 2QY**